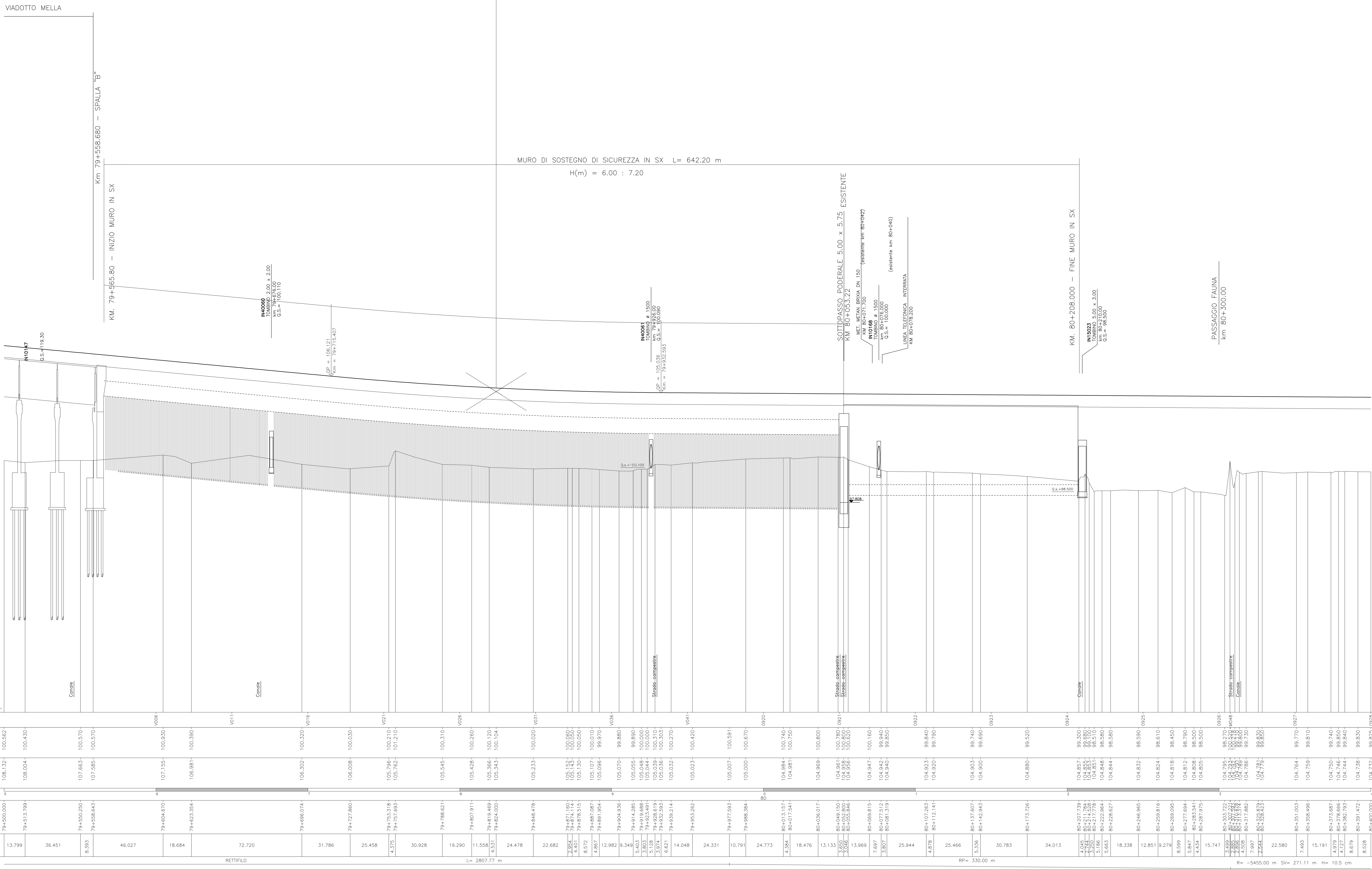


Provincia	BRESCIA			BRESCIA		
Comune	FLERO			FLERO		
Livelle	DISCESA L= 524.00 m	DH= -4.89 m	p= -0.00934	DISCESA L= 3701.11 m	DH= -2.41 m	p= -0.00065
Progressive livelle	79+524.000					

Sp	155.107
Ap	0.00989
Rv	25000.000
L	108.59
f	0.236



Stazioni	Quote Terreno	Quote Progetto	Ettometriche	Progressive	Particolari	Andamento planimetrico
79+500.000	108.132	100.562	1	79+500.000	13.799	RETTIFILLO L= 2807.77 m
79+513.799	108.004	100.430	2	79+513.799	36.451	
79+527.598	107.663	100.570	3	79+527.598	8.393	
79+541.397	107.585	100.570	4	79+541.397	46.027	
79+555.196	107.155	100.330	5	79+555.196	18.684	
79+568.995	106.908	100.030	6	79+568.995	25.458	
79+582.794	105.796	100.210	7	79+582.794	4.375	
79+596.593	105.762	101.210	8	79+596.593	30.928	
79+610.392	105.545	100.310	9	79+610.392	19.290	
79+624.191	105.428	100.260	10	79+624.191	11.538	
79+637.990	105.566	100.120	11	79+637.990	24.478	
79+651.789	105.543	100.104	12	79+651.789	22.682	
79+665.588	105.233	100.020	13	79+665.588	4.501	
79+679.387	105.152	100.060	14	79+679.387	4.601	
79+693.186	105.130	100.050	15	79+693.186	8.572	
79+706.985	105.074	100.010	16	79+706.985	4.867	
79+720.784	105.059	99.970	17	79+720.784	12.982	
79+734.583	105.070	99.880	18	79+734.583	9.340	
79+748.382	105.055	99.890	19	79+748.382	5.603	
79+762.181	105.044	100.000	20	79+762.181	3.503	
79+775.980	105.044	100.000	21	79+775.980	5.129	
79+789.779	105.039	100.310	22	79+789.779	6.821	
79+803.578	105.039	100.303	23	79+803.578	14.048	
79+817.377	105.032	100.270	24	79+817.377	24.331	
79+831.176	105.023	100.420	25	79+831.176	10.791	
79+844.975	105.007	100.593	26	79+844.975	24.773	
79+858.774	105.000	100.670	27	79+858.774	4.384	
79+872.573	104.884	100.740	28	79+872.573	13.132	
79+886.372	104.881	100.750	29	79+886.372	3.502	
79+900.171	104.869	100.800	30	79+900.171	13.969	
79+913.970	104.861	100.780	31	79+913.970	7.697	
79+927.769	104.856	100.760	32	79+927.769	25.944	
79+941.568	104.851	100.740	33	79+941.568	4.878	
79+955.367	104.847	100.160	34	79+955.367	25.466	
79+969.166	104.842	99.840	35	79+969.166	5.338	
79+982.965	104.840	99.850	36	79+982.965	30.783	
79+996.764	104.832	99.740	37	79+996.764	34.013	
80+010.563	104.820	99.790	38	80+010.563	4.045	
80+024.362	104.820	99.660	39	80+024.362	3.752	
80+038.161	104.818	99.580	40	80+038.161	3.552	
80+051.960	104.818	99.540	41	80+051.960	5.186	
80+065.759	104.818	99.580	42	80+065.759	3.663	
80+079.558	104.818	99.580	43	80+079.558	18.338	
80+093.357	104.818	99.580	44	80+093.357	12.851	
80+107.156	104.818	99.580	45	80+107.156	8.599	
80+120.955	104.818	99.580	46	80+120.955	5.847	
80+134.754	104.818	99.580	47	80+134.754	4.424	
80+148.553	104.818	99.580	48	80+148.553	15.747	
80+162.352	104.818	99.580	49	80+162.352	3.859	
80+176.151	104.818	99.580	50	80+176.151	2.882	
80+189.950	104.818	99.580	51	80+189.950	2.882	
80+203.749	104.818	99.580	52	80+203.749	4.505	
80+217.548	104.818	99.580	53	80+217.548	7.997	
80+231.347	104.818	99.580	54	80+231.347	22.941	
80+245.146	104.818	99.580	55	80+245.146	22.941	
80+258.945	104.818	99.580	56	80+258.945	7.493	
80+272.744	104.818	99.580	57	80+272.744	15.191	
80+286.543	104.818	99.580	58	80+286.543	4.979	
80+300.342	104.818	99.580	59	80+300.342	4.127	
80+314.141	104.818	99.580	60	80+314.141	8.679	
80+327.940	104.818	99.580	61	80+327.940	8.528	
80+341.739	104.818	99.580	62	80+341.739	8.528	
80+355.538	104.818	99.580	63	80+355.538	8.528	
80+369.337	104.818	99.580	64	80+369.337	8.528	
80+383.136	104.818	99.580	65	80+383.136	8.528	
80+396.935	104.818	99.580	66	80+396.935	8.528	
80+410.734	104.818	99.580	67	80+410.734	8.528	
80+424.533	104.818	99.580	68	80+424.533	8.528	
80+438.332	104.818	99.580	69	80+438.332	8.528	
80+452.131	104.818	99.580	70	80+452.131	8.528	
80+465.930	104.818	99.580	71	80+465.930	8.528	
80+479.729	104.818	99.580	72	80+479.729	8.528	
80+493.528	104.818	99.580	73	80+493.528	8.528	
80+507.327	104.818	99.580	74	80+507.327	8.528	
80+521.126	104.818	99.580	75	80+521.126	8.528	
80+534.925	104.818	99.580	76	80+534.925	8.528	
80+548.724	104.818	99.580	77	80+548.724	8.528	
80+562.523	104.818	99.580	78	80+562.523	8.528	
80+576.322	104.818	99.580	79	80+576.322	8.528	
80+590.121	104.818	99.580	80	80+590.121	8.528	

COMMITENTE: **RFI** RETE FERROVIARIA ITALIANA

ALTA SOVRIGLIANZA: **ITALFERR**

GENERAL CONTRACTOR: **Cepav due**

**INFRASTRUTTURE FERROVIARIE STRATEGICHE DEFINITE DALLA LEGGE OBIETTIVO N. 443/01**  
**LINEA A.V. /A.C. TORINO - VENEZIA** Tratta MILANO - VERONA  
 Lotto funzionale Brescia-Verona  
**PROGETTO DEFINITIVO**

PROFILO LONGITUDINALE LINEA A.C.  
 DA KM 79+500.000 A KM 80+400.000  
 TAVOLA N° 58

ALTA SOVRIGLIANZA: **ITALFERR**

COMMESSA: **IN05** LOTTO: **00** FASE: **D** ENTE: **E2** TIPO DOC: **F7** OPERAZIONE: **IF0001** PROGR.: **058** REV.: **1** SCALA: **1:1000/1:100**

PROGETTAZIONE GENERAL CONTRACTOR: **Saipem S.p.a.**

Rev. Data Descrizione Redato Verificato Data Approvato Data  
 0 31/03/14 EMISSIONE PER CDS M.T. 31/03/14 GHELFI 31/03/14 LAZZARI 31/03/14  
 1 01/07/14 REVISIONE PER CDS 01/07/14 TROTTI 01/07/14 COZZI 01/07/14  
 2  
 3

Autentizzato/Date: **Cepav due** Project Director **Ugo Caporali**

Saipem S.p.a. COMM. 032121 Data: 01/07/14 Doc.N. IN0500DE2F7IF00010581

Scopo di plan: 1:1