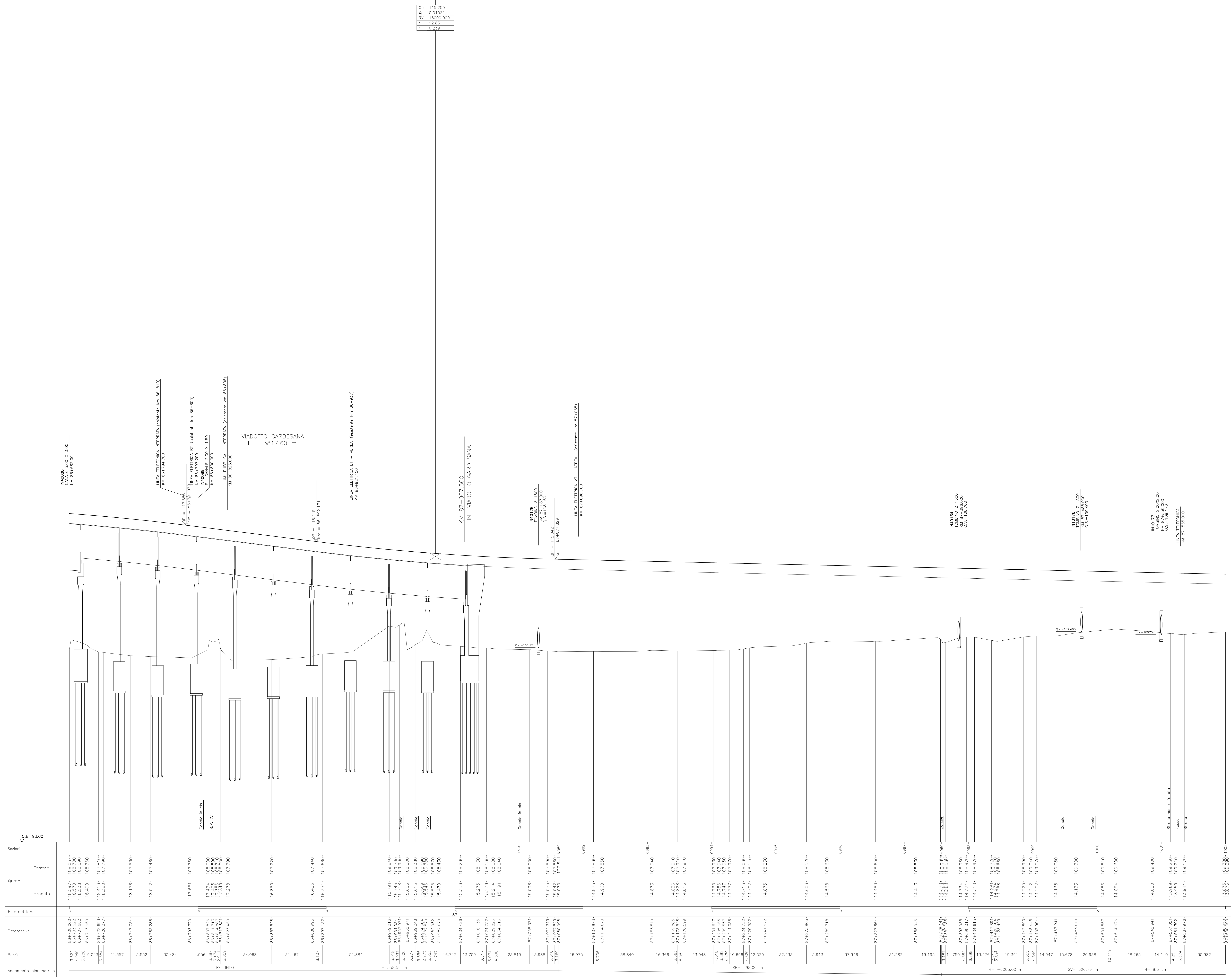


Provincia	Brescia					
Comune	Montirone					
Livelle	DISCESA L= 325.00 m	DH= -4.08 m	p= -0.01255	DISCESA L= 1376.62 m	DH= -3.08 m	p= -0.00224
Progressive livelle	86+985.000					



Sezioni	Quote	Terreno	Progetto	Ettometriche	Progressive	Particolari	Andamento planimetrico
		118.977	118.977	3.632	86+700.000	3.632	
		118.978	118.978	4.050	86+701.632	4.050	
		118.980	118.980	5.888	86+713.600	5.888	
		118.981	118.981	9.043	86+726.635	9.043	
		118.982	118.982	3.584	86+728.377	3.584	
		118.976	118.976	21.357	86+747.734	21.357	
		107.530	107.530	15.552	86+763.286	15.552	
		107.460	107.460	30.484	86+783.770	30.484	
		107.360	107.360	14.056	86+793.770	14.056	
		108.000	108.000	5.827	86+807.286	5.827	
		108.200	108.200	3.174	86+811.607	3.174	
		108.210	108.210	3.174	86+811.607	3.174	
		107.390	107.390	5.659	86+823.460	5.659	
		107.220	107.220	34.068	86+857.528	34.068	
		107.440	107.440	31.467	86+889.990	31.467	
		107.660	107.660	8.137	86+897.132	8.137	
		109.840	109.840	5.018	86+948.016	5.018	
		109.840	109.840	3.837	86+952.854	3.837	
		108.000	108.000	5.900	86+968.971	5.900	
		108.380	108.380	6.277	86+989.248	6.277	
		108.600	108.600	3.205	86+992.604	3.205	
		108.570	108.570	5.535	86+993.932	5.535	
		108.430	108.430	4.737	86+997.679	4.737	
		108.260	108.260	16.747	87+004.426	16.747	
		108.130	108.130	13.709	87+018.135	13.709	
		108.130	108.130	5.074	87+024.752	5.074	
		108.080	108.080	4.690	87+029.826	4.690	
		108.040	108.040	15.191	87+032.916	15.191	
		108.000	108.000	23.815	87+038.331	23.815	
		107.800	107.800	13.988	87+047.209	13.988	
		107.860	107.860	5.510	87+047.209	5.510	
		107.841	107.841	33.032	87+050.998	33.032	
		107.850	107.850	26.975	87+057.973	26.975	
		107.850	107.850	6.706	87+114.679	6.706	
		107.840	107.840	38.840	87+153.519	38.840	
		107.910	107.910	16.366	87+168.846	16.366	
		107.910	107.910	3.563	87+168.846	3.563	
		107.910	107.910	5.021	87+178.599	5.021	
		107.840	107.840	23.048	87+202.647	23.048	
		107.840	107.840	4.018	87+206.665	4.018	
		107.840	107.840	4.479	87+209.957	4.479	
		107.840	107.840	4.479	87+214.036	4.479	
		108.560	108.560	0.696	87+224.732	0.696	
		108.140	108.140	4.620	87+229.352	4.620	
		108.230	108.230	32.020	87+241.372	32.020	
		108.520	108.520	32.233	87+273.805	32.233	
		108.520	108.520	15.913	87+289.718	15.913	
		108.650	108.650	37.946	87+327.664	37.946	
		108.830	108.830	31.282	87+358.946	31.282	
		108.830	108.830	19.195	87+358.946	19.195	
		108.840	108.840	3.301	87+362.785	3.301	
		108.840	108.840	11.750	87+362.785	11.750	
		108.840	108.840	4.882	87+368.317	4.882	
		108.840	108.840	6.298	87+404.615	6.298	
		108.840	108.840	13.276	87+417.897	13.276	
		108.840	108.840	2.682	87+420.914	2.682	
		108.990	108.990	19.391	87+442.890	19.391	
		109.070	109.070	5.555	87+448.445	5.555	
		109.070	109.070	4.929	87+452.994	4.929	
		109.080	109.080	14.947	87+467.941	14.947	
		109.300	109.300	10.119	87+485.619	10.119	
		109.510	109.510	10.119	87+504.557	10.119	
		109.600	109.600	28.265	87+514.616	28.265	
		109.400	109.400	14.110	87+542.841	14.110	
		109.250	109.250	4.350	87+507.051	4.350	
		109.210	109.210	6.874	87+561.302	6.874	
		109.170	109.170	30.982	87+567.976	30.982	

COMMITENTE:

ALTA SOVRIGLIANZA:

GENERAL CONTRACTOR:

INFRASTRUTTURE FERROVIARIE STRATEGICHE DEFINITE DALLA LEGGE OBIETTIVO N. 443/01
 LINEA A.V. /A.C. TORINO - VENEZIA Tratta MILANO - VERONA
 Lotto funzionale Brescia-Verona
 PROGETTO DEFINITIVO

PROFILO LONGITUDINALE LINEA A.C.
 DA KM 86+700.000 A KM 87+600.000
 TAVOLA N° 66

ALTA SOVRIGLIANZA:

COMMESSA	LOTTO	FASE	ENTE	TIPO DOC.	OPERAZIONE	PROGR.	REV.	SCALA
IN05	00	D	E2	F7	IF0001	066	1	1:1000/1:100

PROGETTAZIONE GENERAL CONTRACTOR

Rev.	Data	Descrizione	Redatto	Verificato	Data	Approvato	Data	Autore/Verificatore/Approvatore
0	31/03/14	EMMISSIONE PER CDS	M.T.	GHELFI	31/03/14	LAZZARI	31/03/14	Cepav due
1	01/07/14	REVISIONE PER CDS	01/07/14	...	01/07/14	Project director
2								
3								

Salpem S.p.a. COMM. 032121 | Data: 01/07/14 | Doc. N. IN0500DE27IF00010661

Scalo di pila: 1:1