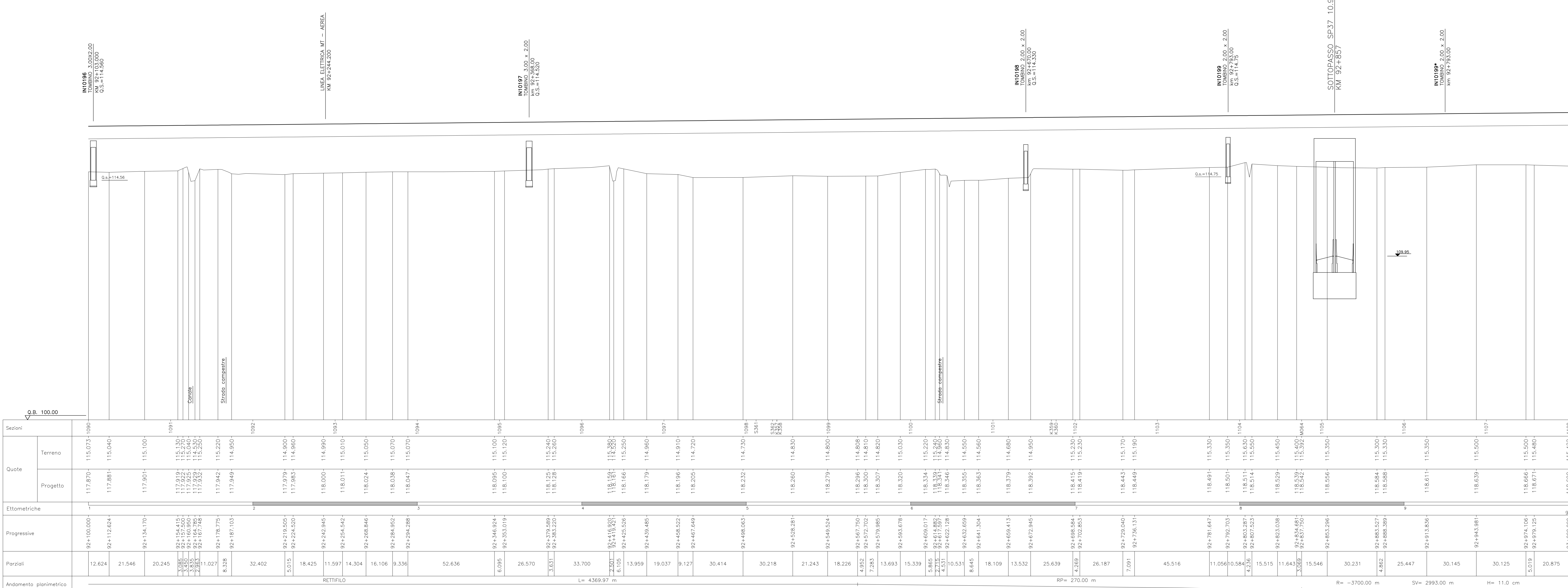


Provincia	BRESCIA
Comune	CASTENEDOLO
Livellente	SALITA L= 3562,99 m DH= 3,29 m p= 0,00092
Progressive livellente	

DISEGNI DI RIFERIMENTO	
DESCRIZIONE	CODICE
NOTE GENERALI	
CARATTERISTICHE DEI MATERIALI	



Sezioni	Quote	
	Terreno	Progetto
1090	115,073	117,870
1091	115,100	117,887
1092	115,100	117,907
1093	115,100	117,922
1094	115,100	117,937
1095	115,100	117,952
1096	115,100	117,967
1097	115,100	117,982
1098	115,100	117,997
1099	115,100	118,012
1100	115,100	118,027
1101	115,100	118,042
1102	115,100	118,057
1103	115,100	118,072
1104	115,100	118,087
1105	115,100	118,102
1106	115,100	118,117
1107	115,100	118,132
1108	115,100	118,147
1109	115,100	118,162
1110	115,100	118,177
1111	115,100	118,192
1112	115,100	118,207
1113	115,100	118,222
1114	115,100	118,237
1115	115,100	118,252
1116	115,100	118,267
1117	115,100	118,282
1118	115,100	118,297
1119	115,100	118,312
1120	115,100	118,327
1121	115,100	118,342
1122	115,100	118,357
1123	115,100	118,372
1124	115,100	118,387
1125	115,100	118,402
1126	115,100	118,417
1127	115,100	118,432
1128	115,100	118,447
1129	115,100	118,462
1130	115,100	118,477
1131	115,100	118,492
1132	115,100	118,507
1133	115,100	118,522
1134	115,100	118,537
1135	115,100	118,552
1136	115,100	118,567
1137	115,100	118,582
1138	115,100	118,597
1139	115,100	118,612
1140	115,100	118,627
1141	115,100	118,642
1142	115,100	118,657
1143	115,100	118,672
1144	115,100	118,687
1145	115,100	118,702
1146	115,100	118,717
1147	115,100	118,732
1148	115,100	118,747
1149	115,100	118,762
1150	115,100	118,777
1151	115,100	118,792
1152	115,100	118,807
1153	115,100	118,822
1154	115,100	118,837
1155	115,100	118,852
1156	115,100	118,867
1157	115,100	118,882
1158	115,100	118,897
1159	115,100	118,912
1160	115,100	118,927
1161	115,100	118,942
1162	115,100	118,957
1163	115,100	118,972
1164	115,100	118,987
1165	115,100	119,002
1166	115,100	119,017
1167	115,100	119,032
1168	115,100	119,047
1169	115,100	119,062
1170	115,100	119,077
1171	115,100	119,092
1172	115,100	119,107
1173	115,100	119,122
1174	115,100	119,137
1175	115,100	119,152
1176	115,100	119,167
1177	115,100	119,182
1178	115,100	119,197
1179	115,100	119,212
1180	115,100	119,227
1181	115,100	119,242
1182	115,100	119,257
1183	115,100	119,272
1184	115,100	119,287
1185	115,100	119,302
1186	115,100	119,317
1187	115,100	119,332
1188	115,100	119,347
1189	115,100	119,362
1190	115,100	119,377
1191	115,100	119,392
1192	115,100	119,407
1193	115,100	119,422
1194	115,100	119,437
1195	115,100	119,452
1196	115,100	119,467
1197	115,100	119,482
1198	115,100	119,497
1199	115,100	119,512
1200	115,100	119,527



ALTA SOVRIGLIANZA:



GENERAL CONTRACTOR:



INFRASTRUTTURE FERROVIARIE STRATEGICHE DEFINITE DALLA LEGGE OBIETTIVO N. 443/01

LINEA A.V. /A.C. TORINO - VENEZIA Tratta MILANO - VERONA
Lotto funzionale Brescia-Verona
PROGETTO DEFINITIVO

PROFILO LONGITUDINALE LINEA A.C.
 DA KM 92+100.000 A KM 93+000.000
 TAVOLA N° 72

IL PROGETTISTA

Salpemm spa

Consorzio

IL PROGETTISTA INTEGRATORE

Salpemm spa

Consorzio

COMMESSA	LOTTO	FASE	ENTE	TIPO DOC.	OPERAZIONE	PROGR.	REV.	SCALA
IN05	00	D	E2	F7	IF0001	072	1	1:1000/1:100

PROGETTAZIONE GENERAL CONTRACTOR								Autorizzato/Date	
Rev.	Data	Descrizione	Redatto	Data	Verificato	Data	Approvato	Data	Consorzio
0	31/03/14	EMISSIONE PER CDS	M.T.	31/03/14	GHELFI	31/03/14	LAZZARI	31/03/14	 Project director 
1	01/07/14	REVISIONE PER CDS		01/07/14		01/07/14		01/07/14	
2									
3									

Salpemm S.p.a. COMM. 032121 | Data: 01/07/14 | Doc. N. IN0500DE27IF00010721

Progetto cofinanziato dalla Unione Europea | CLP: FB18F1000000008