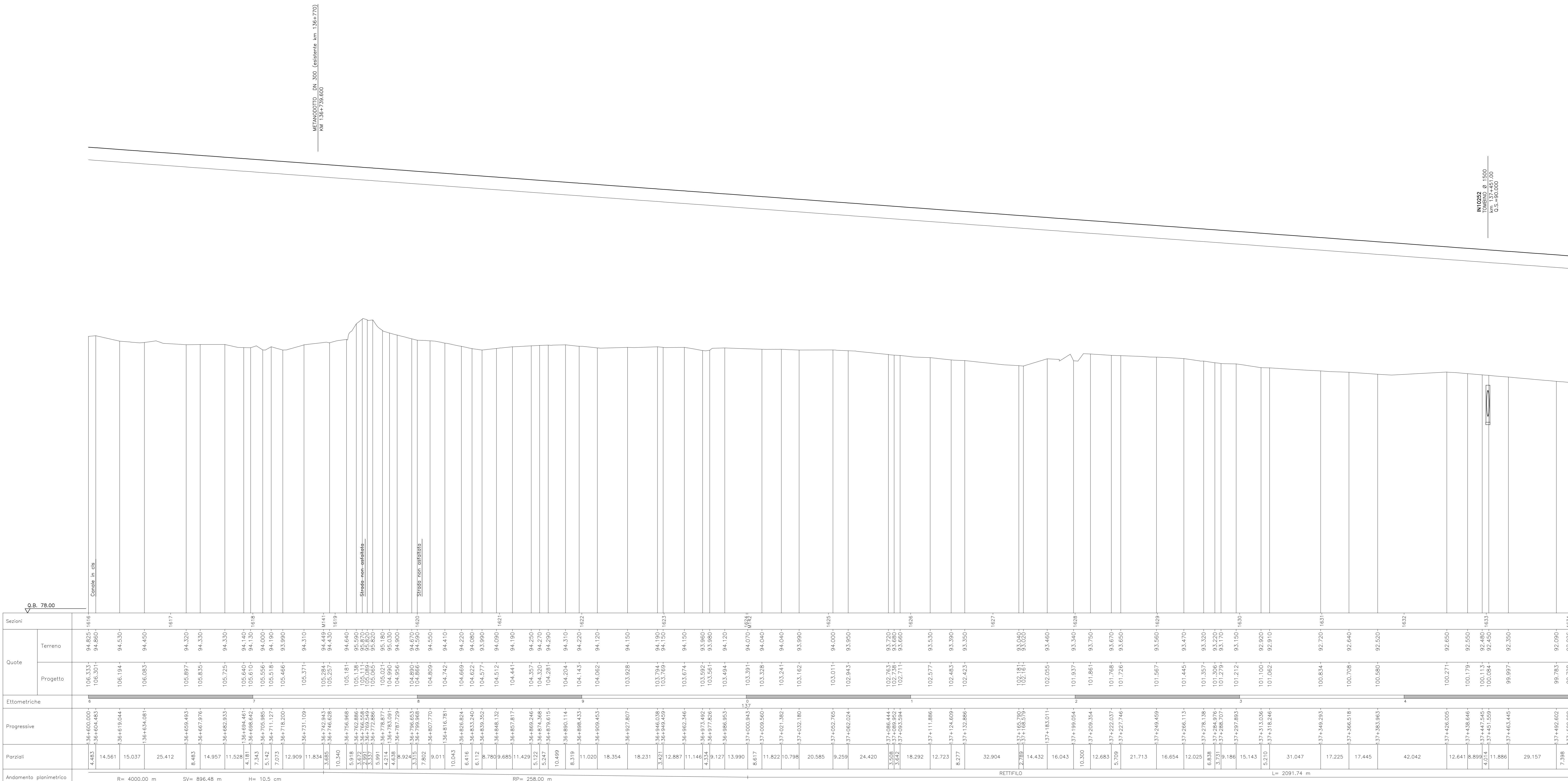


Provincia	VERONA		
Comune	SOMMACAMPAGNA		
Livellente	DISCESA L= 1704.59 m	DH= -12.51 m	p= -0.00734
Progressive livellente			

DISEGNI DI RIFERIMENTO	
DESCRIZIONE	CODICE
NOTE GENERALI	
CARATTERISTICHE DEI MATERIALI	



Sezioni	Quote Terreno	Quote Progetto	Elettometriche	Progressive	Parziali	Andamento planimetrico
106+000	94.825	106.333	94.825	106.333	4.033	R= 4000.00 m
106+050	94.860	106.307	94.860	106.307	3.998	
106+100	94.530	106.194	94.530	106.194	3.664	SV= 896.48 m
106+150	94.455	106.083	94.455	106.083	3.573	
106+200	1617	105.897	1617	105.897	3.287	H= 10.5 cm
106+250	94.330	105.835	94.330	105.835	3.502	
106+300	94.330	105.725	94.330	105.725	3.392	RP= 258.00 m
106+350	94.400	105.640	94.400	105.640	3.240	
106+400	94.330	105.610	94.330	105.610	3.280	
106+450	94.000	105.556	94.000	105.556	3.556	
106+500	94.190	105.518	94.190	105.518	3.328	
106+550	93.990	105.466	93.990	105.466	3.476	
106+600	94.310	105.371	94.310	105.371	3.061	
106+650	94.440	105.284	94.440	105.284	3.356	
106+700	94.330	105.257	94.330	105.257	3.257	
106+750	94.640	105.181	94.640	105.181	3.541	
106+800	94.770	105.111	94.770	105.111	3.341	
106+850	95.820	105.052	95.820	105.052	3.572	
106+900	95.180	105.021	95.180	105.021	3.841	
106+950	95.030	104.990	95.030	104.990	4.030	
107+000	94.300	104.956	94.300	104.956	4.656	
107+050	94.670	104.892	94.670	104.892	5.292	
107+100	94.370	104.866	94.370	104.866	5.966	
107+150	94.550	104.809	94.550	104.809	6.699	
107+200	94.410	104.742	94.410	104.742	7.442	
107+250	94.220	104.689	94.220	104.689	8.220	
107+300	94.080	104.622	94.080	104.622	9.080	
107+350	93.990	104.577	93.990	104.577	9.990	
107+400	94.090	104.512	94.090	104.512	10.900	
107+450	94.190	104.441	94.190	104.441	11.810	
107+500	94.250	104.357	94.250	104.357	12.720	
107+550	94.270	104.320	94.270	104.320	13.630	
107+600	94.290	104.281	94.290	104.281	14.540	
107+650	94.310	104.204	94.310	104.204	15.450	
107+700	94.220	104.143	94.220	104.143	16.360	
107+750	94.120	104.062	94.120	104.062	17.270	
107+800	94.150	103.928	94.150	103.928	18.180	
107+850	94.190	103.794	94.190	103.794	19.090	
107+900	94.150	103.769	94.150	103.769	20.000	
107+950	94.150	103.674	94.150	103.674	20.910	
108+000	93.860	103.635	93.860	103.635	21.820	
108+050	93.980	103.581	93.980	103.581	22.730	
108+100	94.120	103.494	94.120	103.494	23.640	
108+150	94.070	103.391	94.070	103.391	24.550	
108+200	94.040	103.328	94.040	103.328	25.460	
108+250	94.040	103.241	94.040	103.241	26.370	
108+300	93.990	103.162	93.990	103.162	27.280	
108+350	94.000	103.011	94.000	103.011	28.190	
108+400	93.850	102.943	93.850	102.943	29.100	
108+450	93.520	102.877	93.520	102.877	30.010	
108+500	93.390	102.843	93.390	102.843	30.920	
108+550	93.350	102.763	93.350	102.763	31.830	
108+600	93.350	102.736	93.350	102.736	32.740	
108+650	93.350	102.711	93.350	102.711	33.650	
108+700	93.520	102.656	93.520	102.656	34.560	
108+750	93.460	102.577	93.460	102.577	35.470	
108+800	93.460	102.483	93.460	102.483	36.380	
108+850	93.350	102.423	93.350	102.423	37.290	
108+900	93.350	102.318	93.350	102.318	38.200	
108+950	93.460	102.205	93.460	102.205	39.110	
109+000	93.340	101.877	93.340	101.877	40.020	
109+050	93.750	101.681	93.750	101.681	40.930	
109+100	93.670	101.798	93.670	101.798	41.840	
109+150	93.650	101.726	93.650	101.726	42.750	
109+200	93.500	101.507	93.500	101.507	43.660	
109+250	93.470	101.445	93.470	101.445	44.570	
109+300	93.320	101.357	93.320	101.357	45.480	
109+350	93.220	101.306	93.220	101.306	46.390	
109+400	93.170	101.279	93.170	101.279	47.300	
109+450	93.150	101.212	93.150	101.212	48.210	
109+500	92.900	101.100	92.900	101.100	49.120	
109+550	92.910	101.062	92.910	101.062	50.030	
109+600	92.720	100.854	92.720	100.854	50.940	
109+650	92.650	100.271	92.650	100.271	51.850	
109+700	92.550	100.179	92.550	100.179	52.760	
109+750	92.480	100.132	92.480	100.132	53.670	
109+800	92.450	100.064	92.450	100.064	54.580	
109+850	92.350	99.997	92.350	99.997	55.490	
109+900	92.090	99.783	92.090	99.783	56.400	
109+950	92.026	99.728	92.026	99.728	57.310	

COMMITENTE:

ALTA SOVRIGLIANZA:

GENERAL CONTRACTOR:

INFRASTRUTTURE FERROVIARIE STRATEGICHE DEFINITE DALLA LEGGE OBIETTIVO N. 443/01

LINEA A.V. /A.C. TORINO - VENEZIA Tratta MILANO - VERONA

Lotto funzionale Brescia-Verona

PROGETTO DEFINITIVO

PROFILO LONGITUDINALE LINEA A.C.

DA KM 136+600.000 A KM 137+500.000

TAVOLA N° 123

ALTA SOVRIGLIANZA:

COMMESSA	LOTTO	FASE	ENTE	TIPO DOC.	OPERAZIONE	PROGR.	REV.	SCALA
IN05	00	D	E2	F7	IF0001	123	1	1:1000/1:100

PROGETTAZIONE GENERAL CONTRACTOR

Rev.	Data	Descrizione	Redatto	Data	Verificato	Data	Approvato	Data	Aut. / Data
0	31/03/14	EMMISSIONE PER CDS	M.T.	31/03/14	GHELFI	31/03/14	LAZZARI	31/03/14	Consorzio
1	01/07/14	REVISIONE PER CDS	...	01/07/14	...	01/07/14	...	01/07/14	Project director
2									
3									

Salpem S.p.a. COMM. 032121 | Data: 01/07/14 | Doc. N. IN0500DE2F7F00011231

Scalo di plot: 1:1