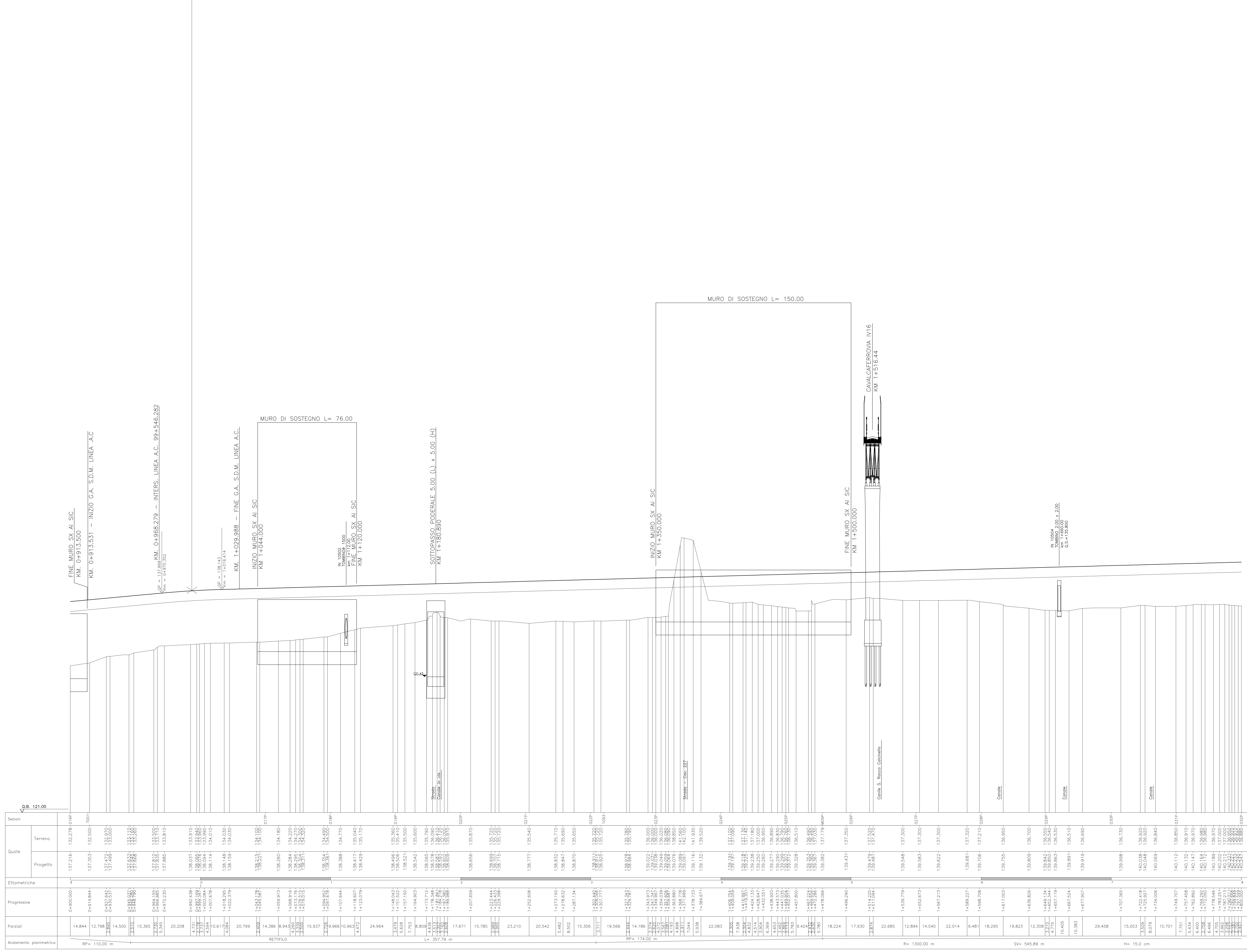


Provincia	Brescia		
Comune	Calcinato		
Livelle	SALITA L= 512,78 m DH= 4,75 m p= 0.00927	SALITA L= 963,17 m	DH= 2,59 m p= 0.00268
Progressive livelle	0+993,383		

Op.	138,081
Rp	50,00558
RY	-7000,000
I	23,53
I	-5,034



Sezioni	Quote		Elettriche	Progressive	Partici	Andamento planimetrico
	Terreno	Progetto				
0+900.000	137,216	132,278	018P	0+900.000	14,844	RP= 110,00 m
0+913.500	137,253	132,500	010P	0+913.500	12,798	
0+927.000	137,272	133,000	010P	0+927.000	14,500	
0+940.500	137,288	133,500	010P	0+940.500	15,366	
0+954.000	137,304	134,000	010P	0+954.000	20,208	
0+967.500	137,320	134,500	010P	0+967.500	4,231	
0+981.000	137,336	135,000	010P	0+981.000	3,537	
0+994.500	137,352	135,500	010P	0+994.500	4,911	
1+008.000	137,368	136,000	010P	1+008.000	5,611	
1+021.500	137,384	136,500	010P	1+021.500	20,799	
1+035.000	137,400	137,000	010P	1+035.000	2,001	
1+048.500	137,416	137,500	010P	1+048.500	14,366	
1+062.000	137,432	138,000	010P	1+062.000	8,943	
1+075.500	137,448	138,500	010P	1+075.500	4,760	
1+089.000	137,464	139,000	010P	1+089.000	2,800	
1+102.500	137,480	139,500	010P	1+102.500	15,937	
1+116.000	137,496	140,000	010P	1+116.000	2,242	
1+129.500	137,512	140,500	010P	1+129.500	9,966	
1+143.000	137,528	141,000	010P	1+143.000	10,963	
1+156.500	137,544	141,500	010P	1+156.500	4,672	
1+170.000	137,560	142,000	010P	1+170.000	24,964	
1+183.500	137,576	142,500	010P	1+183.500	3,879	
1+197.000	137,592	143,000	010P	1+197.000	5,628	
1+210.500	137,608	143,500	010P	1+210.500	7,753	
1+224.000	137,624	144,000	010P	1+224.000	4,636	
1+237.500	137,640	144,500	010P	1+237.500	3,313	
1+251.000	137,656	145,000	010P	1+251.000	2,308	
1+264.500	137,672	145,500	010P	1+264.500	11,871	
1+278.000	137,688	146,000	010P	1+278.000	15,785	
1+291.500	137,704	146,500	010P	1+291.500	2,862	
1+305.000	137,720	147,000	010P	1+305.000	23,210	
1+318.500	137,736	147,500	010P	1+318.500	20,542	
1+332.000	137,752	148,000	010P	1+332.000	5,442	
1+345.500	137,768	148,500	010P	1+345.500	8,502	
1+359.000	137,784	149,000	010P	1+359.000	15,306	
1+372.500	137,800	149,500	010P	1+372.500	3,711	
1+386.000	137,816	150,000	010P	1+386.000	19,566	
1+399.500	137,832	150,500	010P	1+399.500	14,186	
1+413.000	137,848	151,000	010P	1+413.000	2,844	
1+426.500	137,864	151,500	010P	1+426.500	7,808	
1+440.000	137,880	152,000	010P	1+440.000	2,302	
1+453.500	137,896	152,500	010P	1+453.500	4,532	
1+467.000	137,912	153,000	010P	1+467.000	4,072	
1+480.500	137,928	153,500	010P	1+480.500	4,781	
1+494.000	137,944	154,000	010P	1+494.000	6,369	
1+507.500	137,960	154,500	010P	1+507.500	4,653	
1+521.000	137,976	155,000	010P	1+521.000	2,811	
1+534.500	137,992	155,500	010P	1+534.500	5,938	
1+548.000	138,008	156,000	010P	1+548.000	22,083	
1+561.500	138,024	156,500	010P	1+561.500	7,808	
1+575.000	138,040	157,000	010P	1+575.000	2,302	
1+588.500	138,056	157,500	010P	1+588.500	4,532	
1+602.000	138,072	158,000	010P	1+602.000	3,524	
1+615.500	138,088	158,500	010P	1+615.500	6,369	
1+629.000	138,104	159,000	010P	1+629.000	4,653	
1+642.500	138,120	159,500	010P	1+642.500	2,811	
1+656.000	138,136	160,000	010P	1+656.000	5,938	
1+669.500	138,152	160,500	010P	1+669.500	9,421	
1+683.000	138,168	161,000	010P	1+683.000	2,302	
1+696.500	138,184	161,500	010P	1+696.500	4,532	
1+710.000	138,200	162,000	010P	1+710.000	5,938	
1+723.500	138,216	162,500	010P	1+723.500	18,224	
1+737.000	138,232	163,000	010P	1+737.000	17,930	
1+750.500	138,248	163,500	010P	1+750.500	2,811	
1+764.000	138,264	164,000	010P	1+764.000	22,685	
1+777.500	138,280	164,500	010P	1+777.500	12,894	
1+791.000	138,296	165,000	010P	1+791.000	14,540	
1+804.500	138,312	165,500	010P	1+804.500	22,014	
1+818.000	138,328	166,000	010P	1+818.000	9,481	
1+831.500	138,344	166,500	010P	1+831.500	18,295	
1+845.000	138,360	167,000	010P	1+845.000	19,823	
1+858.500	138,376	167,500	010P	1+858.500	12,308	
1+872.000	138,392	168,000	010P	1+872.000	4,775	
1+885.500	138,408	168,500	010P	1+885.500	10,905	
1+899.000	138,424	169,000	010P	1+899.000	10,383	
1+912.500	138,440	169,500	010P	1+912.500	29,458	
1+926.000	138,456	170,000	010P	1+926.000	15,053	
1+939.500	138,472	170,500	010P	1+939.500	8,079	
1+953.000	138,488	171,000	010P	1+953.000	15,701	
1+966.500	138,504	171,500	010P	1+966.500	7,751	
1+980.000	138,520	172,000	010P	1+980.000	5,434	
1+993.500	138,536	172,500	010P	1+993.500	2,758	
1+1007.000	138,552	173,000	010P	1+1007.000	6,496	
1+1020.500	138,568	173,500	010P	1+1020.500	4,705	
1+1034.000	138,584	174,000	010P	1+1034.000	3,908	
1+1047.500	138,600	174,500	010P	1+1047.500	2,201	
1+1061.000	138,616	175,000	010P	1+1061.000	2,201	

DISEGNI DI RIFERIMENTO	
DESCRIZIONE	CODICE

NOTE GENERALI

CARATTERISTICHE DEI MATERIALI

COMMITENTE:

ALTA SOVRIGLIANZA:

GENERAL CONTRACTOR:

INFRASTRUTTURE FERROVIARIE STRATEGICHE DEFINITE DALLA LEGGE OBIETTIVO N. 443/01
LINEA A.V. /A.C. TORINO - VENEZIA Tratta MILANO - VERONA
Lotto funzionale Brescia-Verona
PROGETTO DEFINITIVO

PROFILO LONGITUDINALE IC DI BRESCIA EST (B.P.)
DA KM 0+900.000 A KM 1+800.000
TAVOLA N° 192

ALTA SOVRIGLIANZA:

COMMESSA: **IN05** LOTTO: **00** FASE: **D** ENTE: **E2** TIPO DOC: **F7** OPERA/DESCRIZIONE: **IF0001** PROGR.: **192** REV.: **1** SCALA: **1:1000/1:100**

Rev.	Data	Descrizione	Redatto	Data	Verificato	Data	Approvato	Data	Autorizzato/Data
0	31/03/14	EMMISSIONE PER CDS	M.T.	31/03/14	GHELFI	31/03/14	LAZZARI	31/03/14	Cepav due
1	01/07/14	REVISIONE PER CDS		01/07/14		01/07/14		01/07/14	Project director
2									
3									

Salpem S.p.a. COMM. 032121 | Data: 01/07/14 | Doc. IN0500E2F7IF00011921

Scalo di polo: 1:1