

Il presente disegno è di proprietà aziendale. A termini di legge ogni diritto è riservato.
This drawing is company property. All rights are reserved according to law.



REGIONE AUTONOMA DELLA SARDEGNA



Provincia del Sud Sardegna
COMUNE DI SOLARUSSA



TITOLO
TITLE

VALUTAZIONI ED AUTORIZZAZIONI AMBIENTALI

PROGETTO DEFINITIVO
DI UN IMPIANTO AGRIVOLTAICO AVANZATO DENOMINATO "GEA"
E DELLE RELATIVE OPERE DI CONNESSIONE

PROGETTAZIONE
ENGINEERING

Sviluppatore:

ENERGETICA  AGROLUX s.r.l.

Gruppo di progettazione:

Studio Ing. Valeria Medici

COMMITTENTE
CLIENT

 GEA s.r.l.

 GREENCELLS
GROUP

OGGETTO
OBJECT

ANALISI VINCOLISTICA
PAI - Danno potenziale

SCALA / SCALE
1:40.000 - 1:10.000

DATA / DATE
AGOSTO 2024

TAV / DRAW

06e

AUTORE/CREATOR

F.C.

CONTROLLO/EDIT

V.M.

APPR

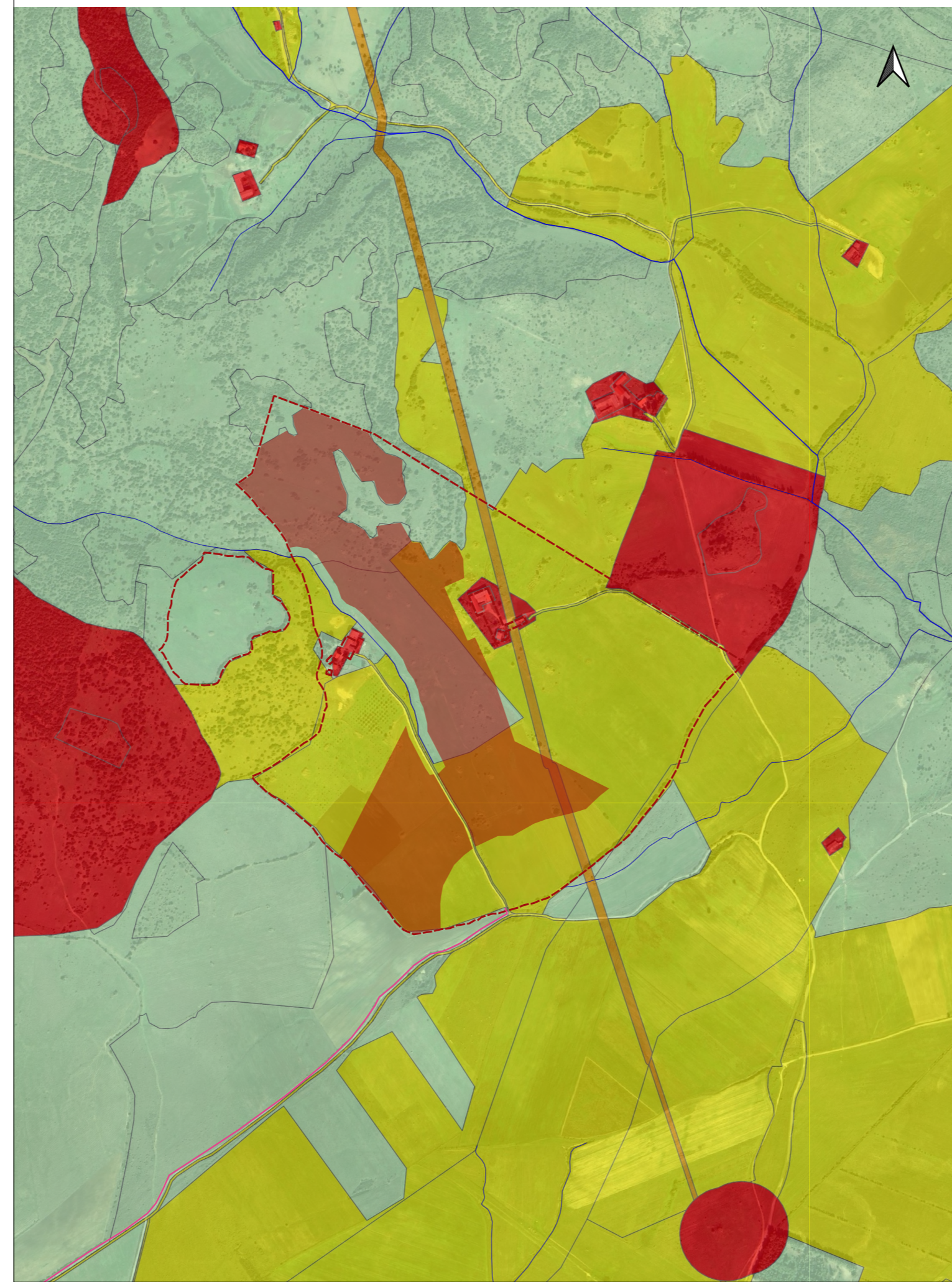
G.C.

REV

00

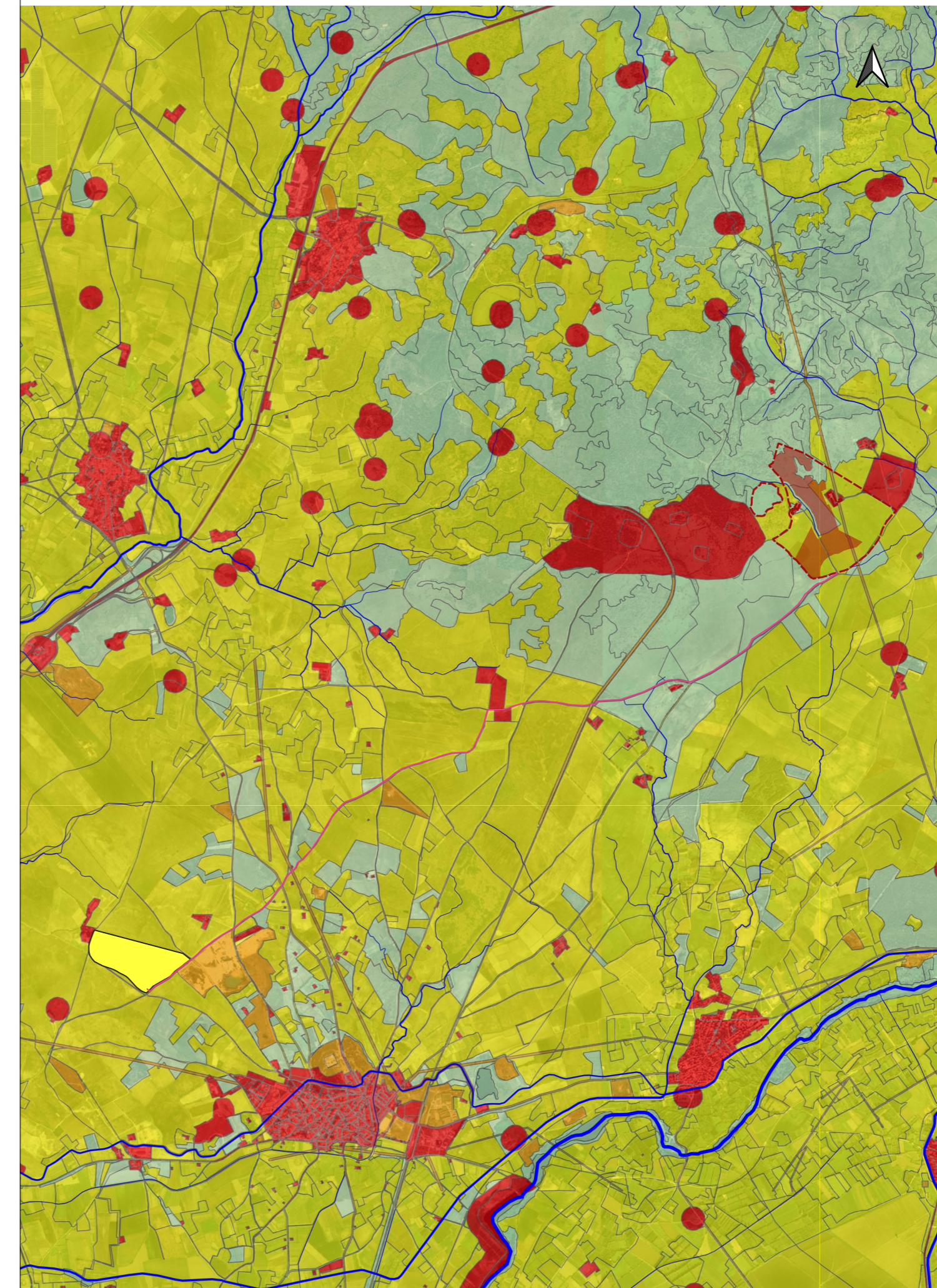
Danno Potenziale Geomorfologico Impianto AGV

Scala 1:10.000








Danno Potenziale Impianto AGV_Linea di connessione






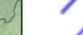
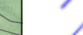

Scala 1:40.000







Legenda

-  Area recintata impianto AGV
-  Area a disposizione società
-  Linea di connessione MT
-  SE Terna_Solarussa
-  Area a disposizione società

Elemento idrico Strahler

-  8
-  7
-  6
-  5
-  4
-  3
-  2
-  1

PAI - Danno Potenziale Rev. Dic_22

-  D1
-  D2
-  D3
-  D4