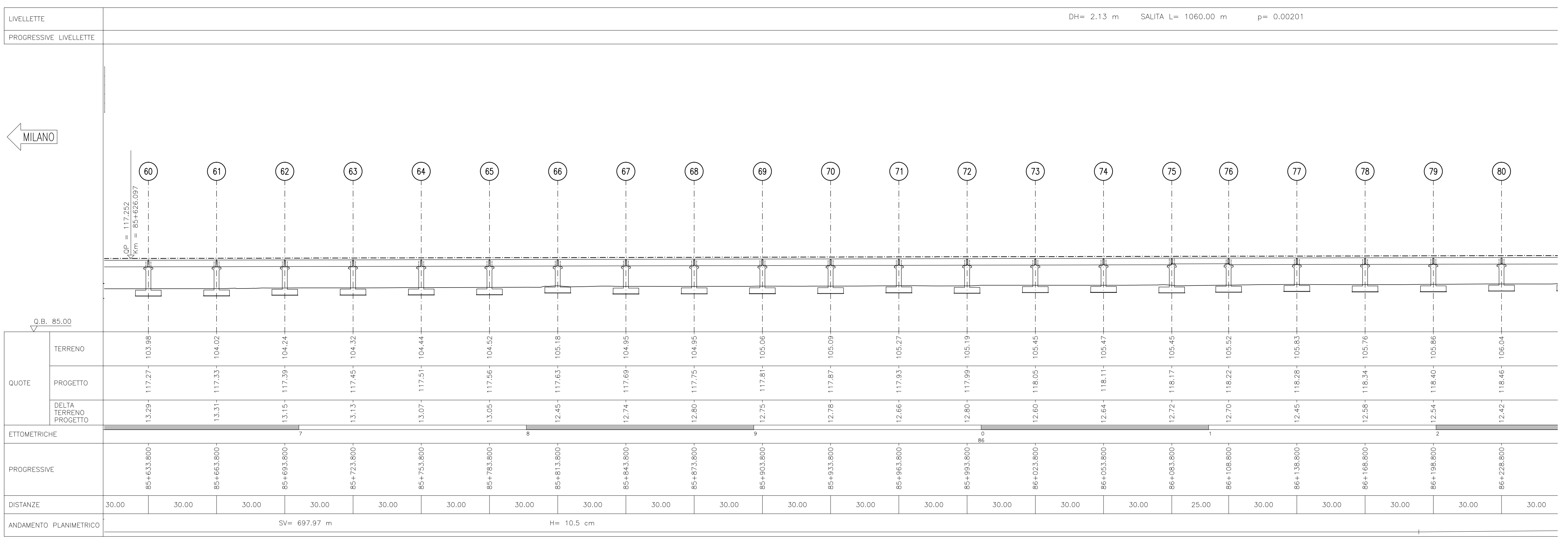
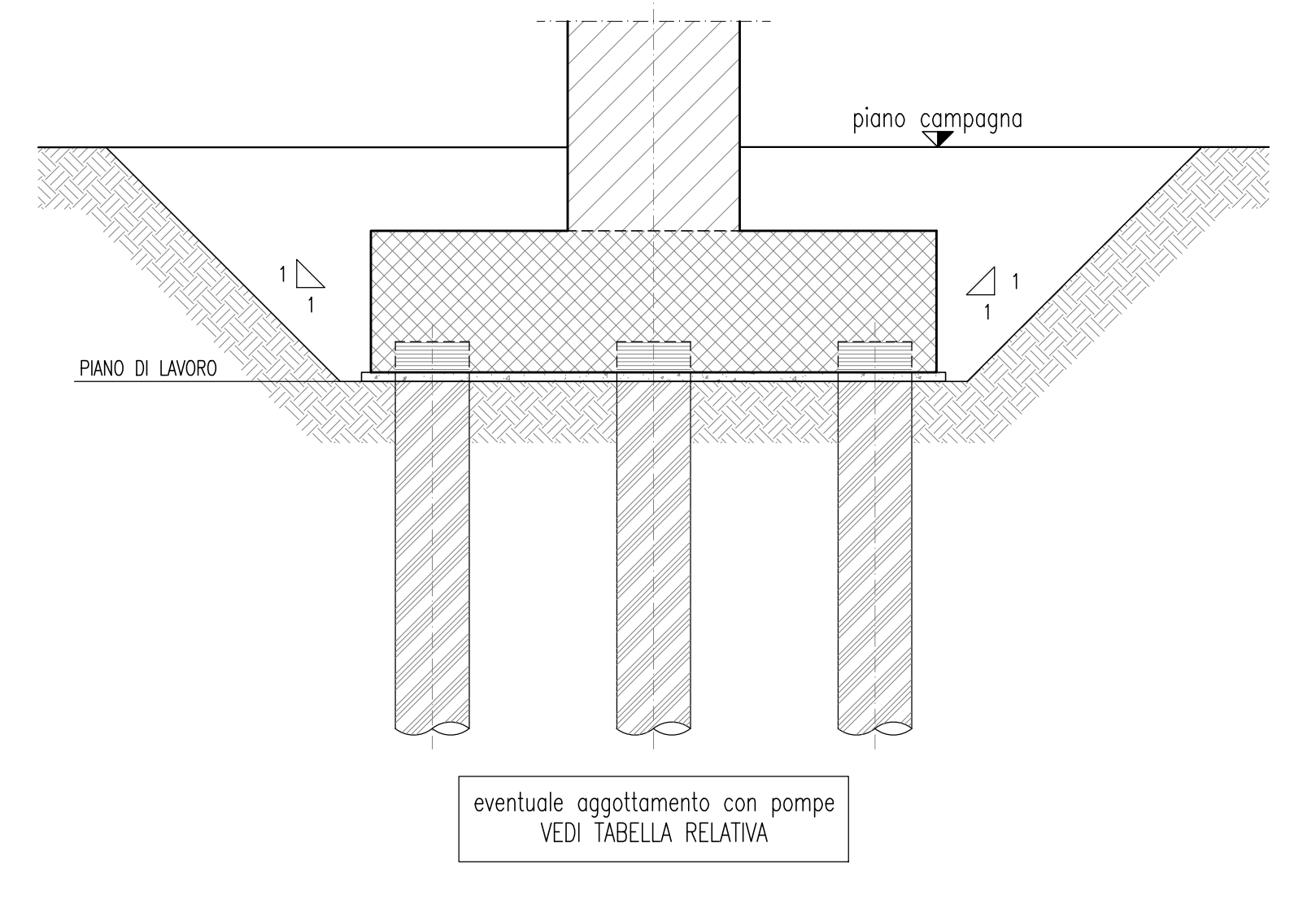


Table with 3 columns: DESCRIZIONE, CODICE. Contains project specifications and reference numbers for various sections and works.

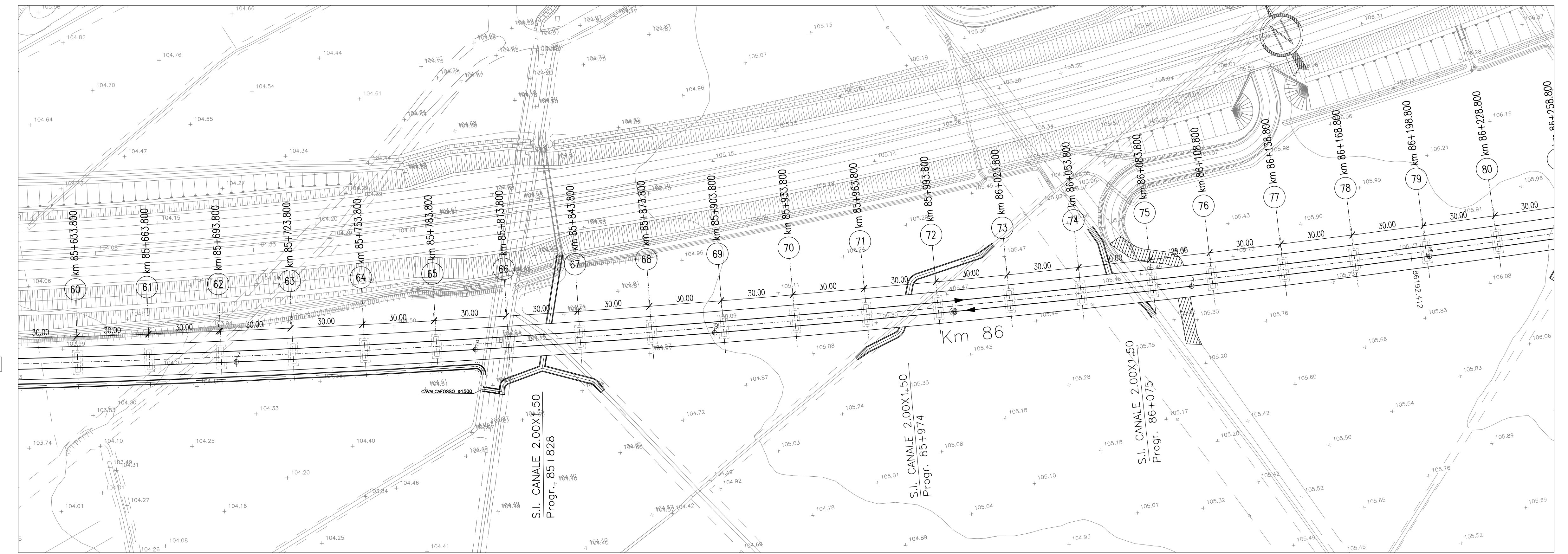
PROFILO LONGITUDINALE



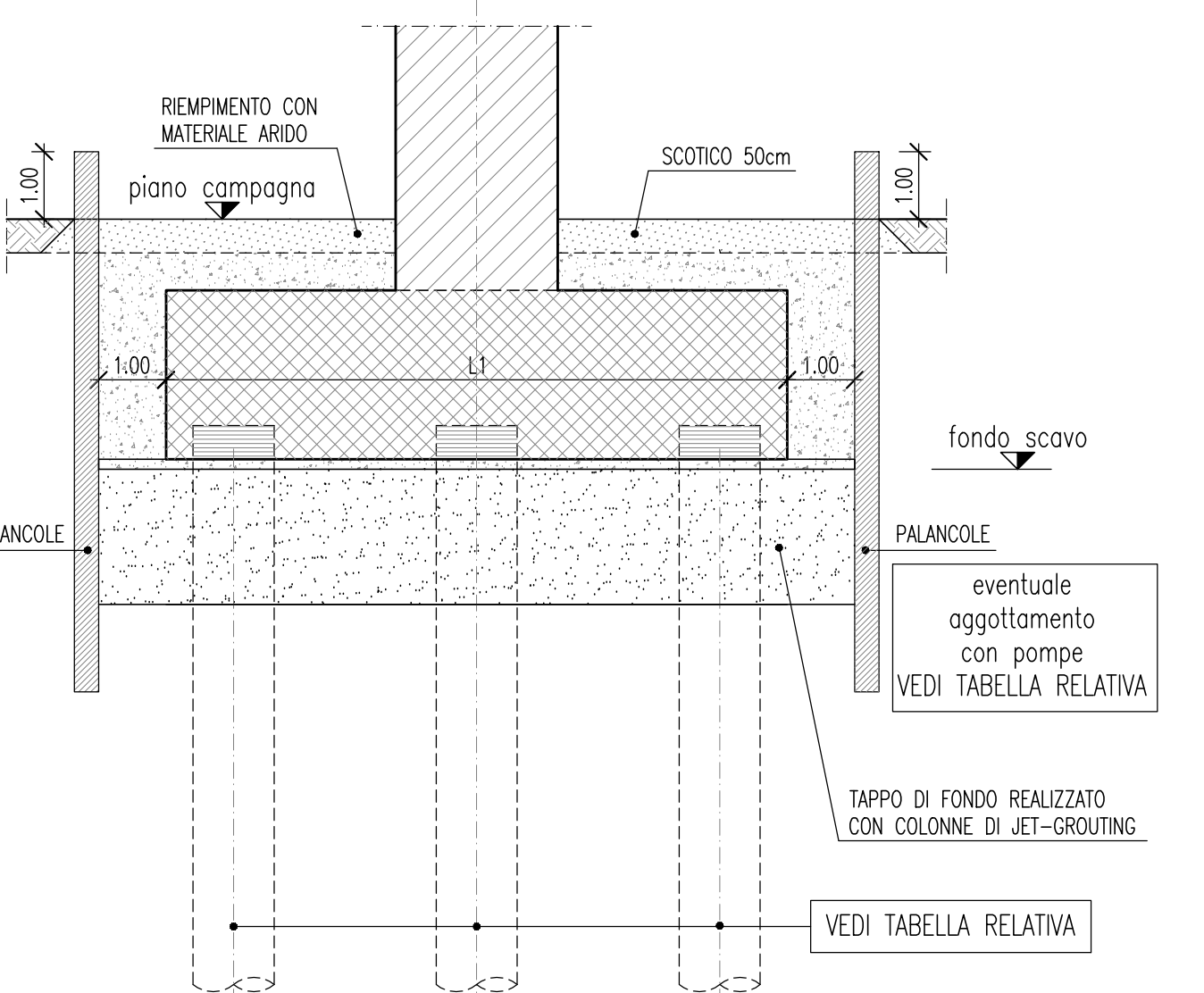
SCHEMA TIPO SCAVO PER REALIZZAZIONE PLINTO (PILE 41-42-43-44-45-46-47-48-49-50-51-52-54-55-56-57-58-59-60-61-62-63-64-65-66-67-68-69-70-71-72-73-74-75-76-78-79-80-81-82-83-84-85-86-87-88-89-90-91-92-93-94-95-96-97-98-99-100-101-102-103-104) (SPALLA "B")



PLANIMETRIA INDIVIDUAZIONE OPERA



SCHEMA TIPO OPERE PROVISORIALI



NOTE GENERALI

Text block containing general notes and specifications regarding measurements, foundation types, and safety measures.

CARATTERISTICHE DEI MATERIALI

Table with 4 columns: NUMERO, N. PALI, DIAMETRO (mm), LUNGHEZZA PALI (m). Lists foundation specifications for piles 60 to 80.

Table with 6 columns: NUMERO, H PILA (*), TIPOLOGICO, Dim. plinti, H plinti, Ricoprimento. Lists pile specifications for piles 60 to 80.

Table with 3 columns: CAMPATA, Lunghezza, TIPOLOGICO. Lists specifications for the shoring structure.

Table with 10 columns: NUMERO, Q. TERRENO (m.s.l.m.), Q. FALDA (m.s.l.m.), H SCAVO (m), TIPO TERRENO, SPESORE TAPPO DI FONDO (m), TIPOLOGICO O.P., L PALANCOLE. Lists excavation and shoring details for each pile location.

Administrative and technical information including project title, contractor (Cepav due), client (Rete Ferroviaria Italiana), and various approval signatures.