

Table with 2 columns: DESCRIZIONE and CODICE. Lists various technical specifications and their corresponding codes.

Table with 2 columns: DESCRIZIONE and CODICE. Lists technical specifications for CAVALCAFERROVIA VIA MONTANALE BASSO LV21.

NOTE GENERALI

Text block containing general notes and instructions regarding the project, including measurement units and specific details.

Table with 2 columns: CLOTIDE and ARCO. Lists technical specifications for road materials and curves.

CARATTERISTICHE DEI MATERIALI

Text block containing material characteristics and specifications for the project.

Complex block containing the COMMITENTE (IRFI) logo and name.

Complex block containing the ALTA SORVEGLIANZA (ITALFERR) logo and name.

Text block containing the GENERAL CONTRACTOR (Cepav due) logo and name.

Text block containing project title: INFRASTRUTTURE FERROVIARIE STRATEGICHE DEFINITE DALLA LEGGE OBIETTIVO N. 443/01.

Text block containing project location: LINEA A.V./A.C. TORINO - VENEZIA Tratta MILANO - VERONA.

Text block containing project name: CAVALCAFERROVIA VIA MONTANALE BASSO - Km 113+452.619.

Table with 2 columns: Verificato and Data. Contains project approval information.

Table with 2 columns: PROGETTAZIONE GENERAL CONTRACTOR and Autorizzatori/Date. Contains project management and approval details.

Table with 2 columns: DATI TRACCIAMENTO ROTATORIA and DATI TRACCIAMENTO ASSE PRINCIPALE CAVALCAFERROVIA. Contains technical data for the roundabout and main axis.

COMUNE DI DESENZANO DEL GARDA

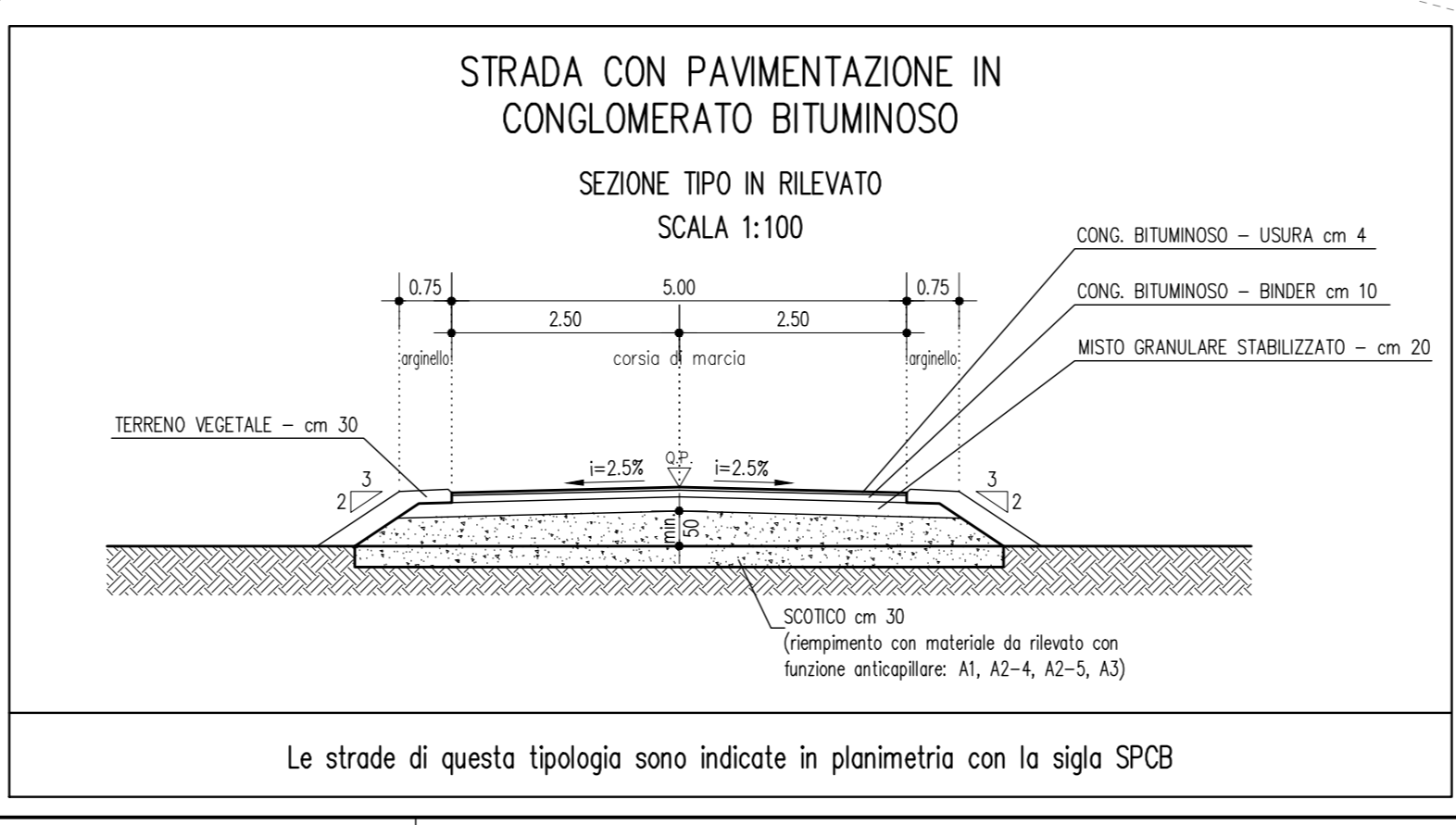
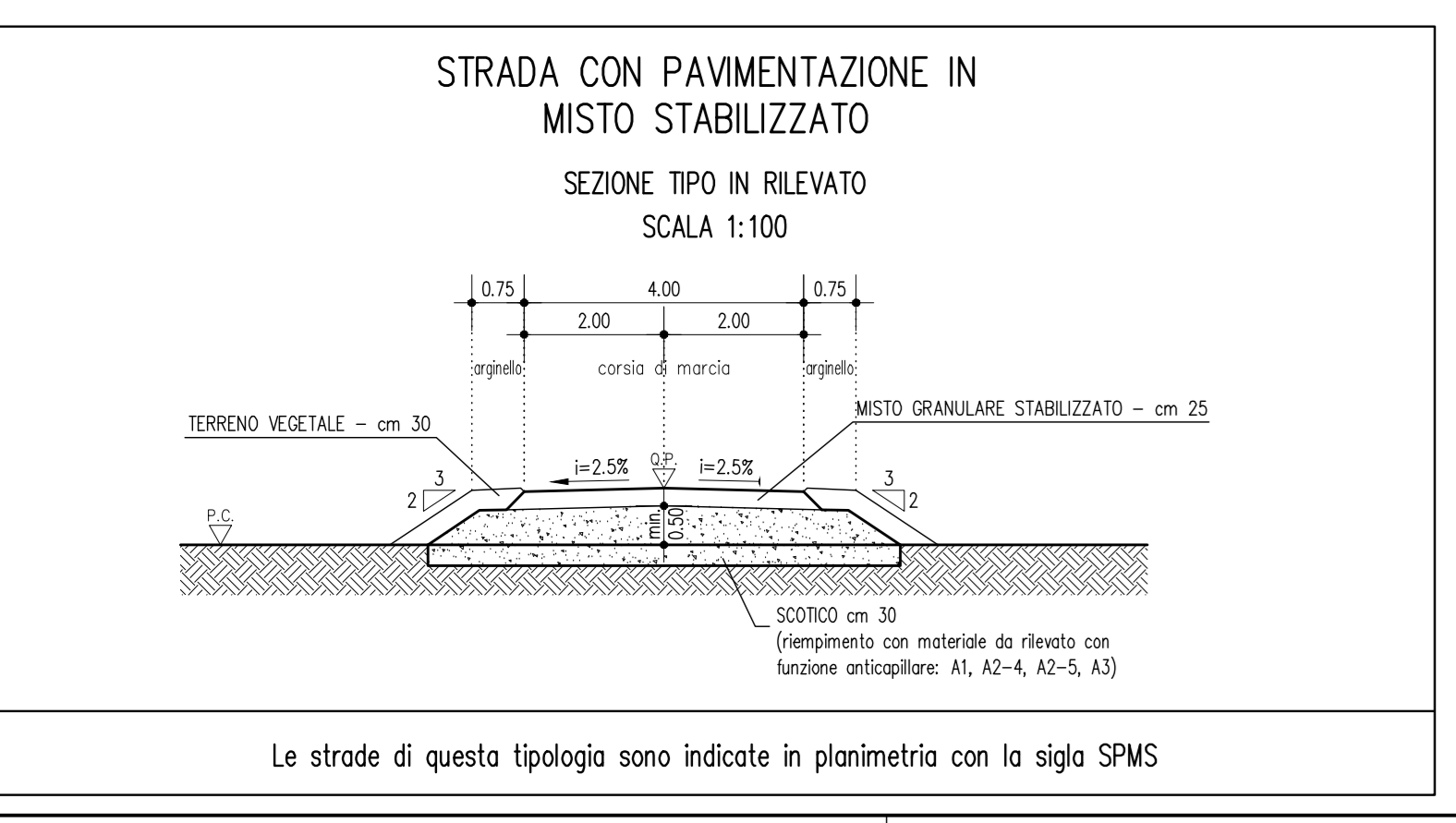
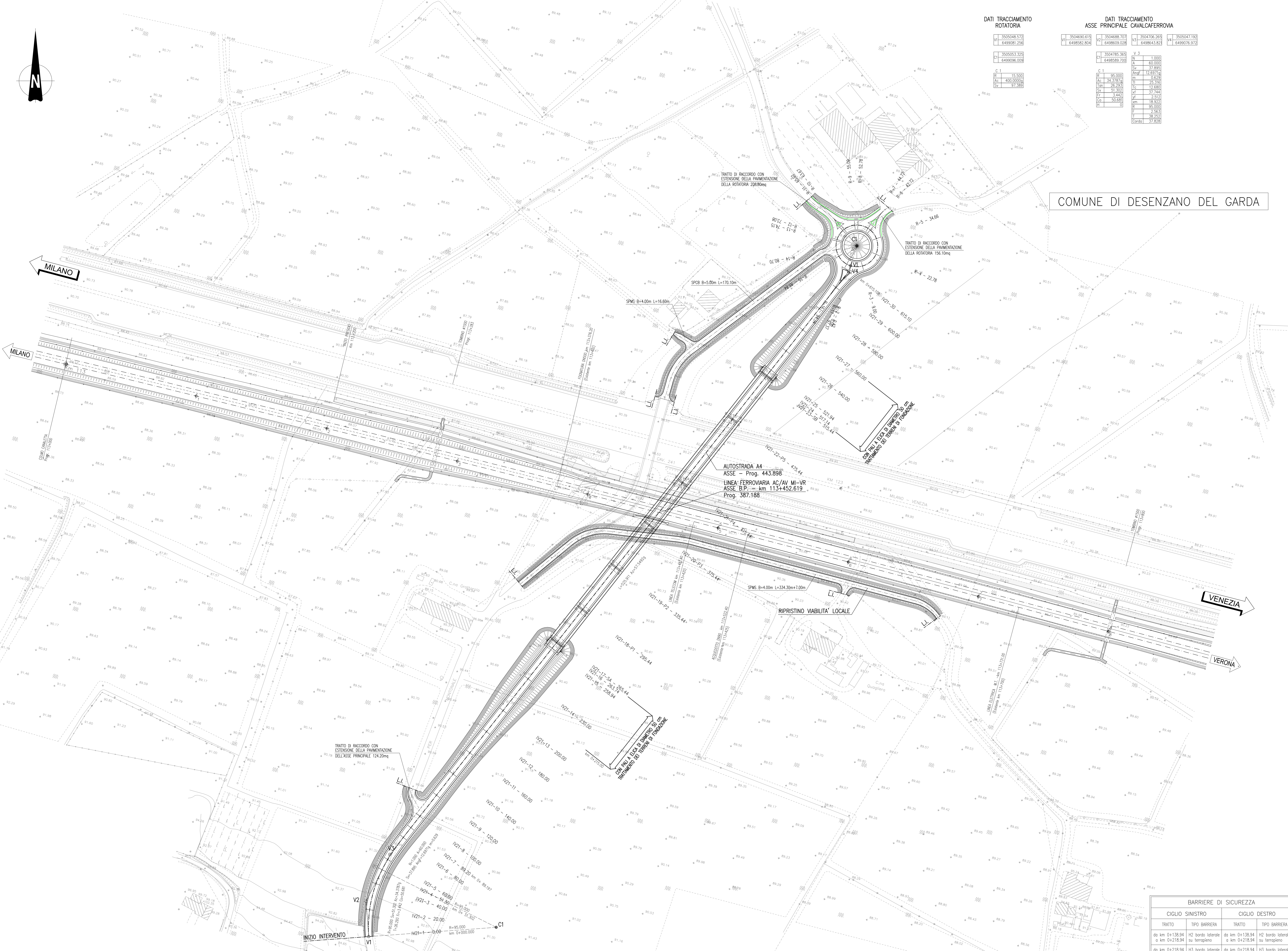


Table titled 'BARRIERE DI SICUREZZA' with columns for CIGLIO SINISTRO and CIGLIO DESTRO. Lists safety barrier specifications.

Table with 2 columns: LIMITI DI VELOCITA' AMMINISTRATIVI and VELOCITA' DI PROGETTO MASSIMA. Lists speed limits and project maximum speeds.