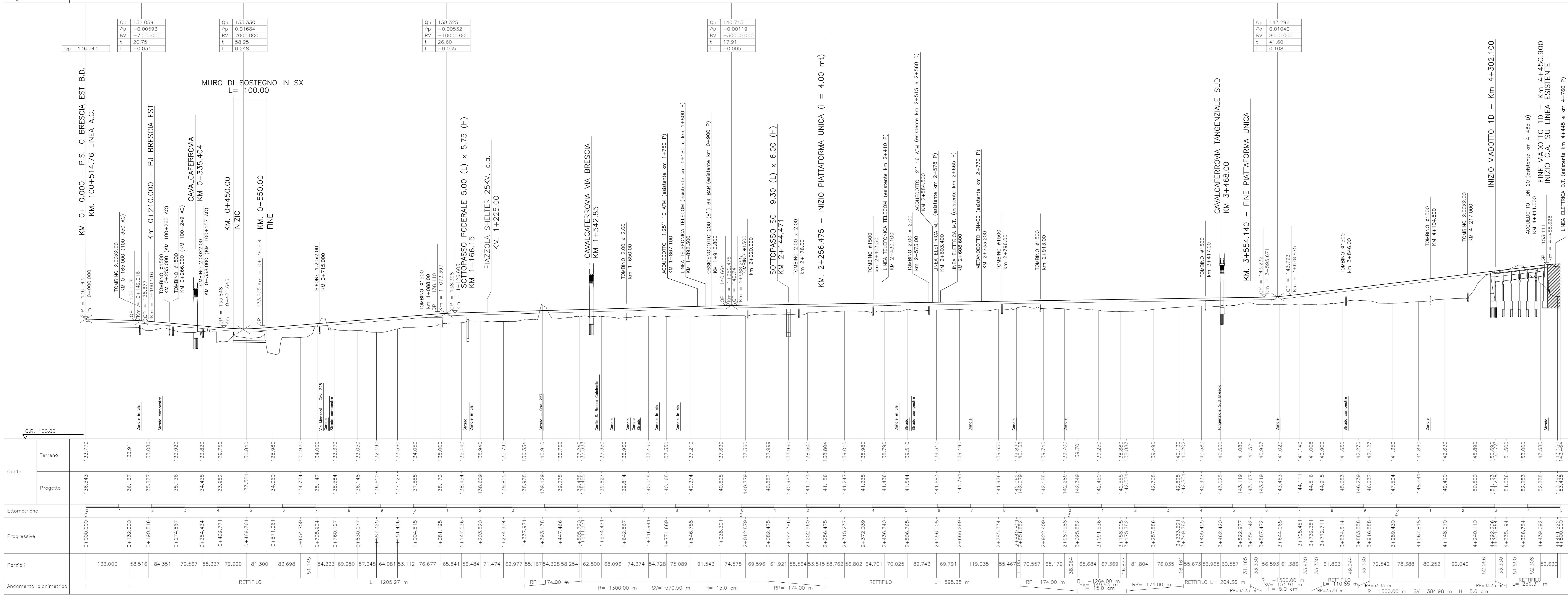


Provincia	BRESCIA		CALCINATO		BRESCIA		MAZZANO	
Comune	BRESCIA		CALCINATO		BRESCIA		MAZZANO	
Livelle	DISCESA L= 169.77 m DH= -0.48 m p= -0.00285		DISCESA L= 310.83 m DH= -2.73 m p= -0.00878		SALITA L= 619.40 m DH= 4.99 m p= 0.00806		SALITA L= 870.38 m DH= 2.39 m p= 0.00274	
Progressive livelle	0+000.000		0+169.766		0+480.600		1+100.000	



Provincia	BRESCIA		BRESCIA		BRESCIA		BRESCIA	
Comune	BRESCIA		BRESCIA		BRESCIA		BRESCIA	
Livelle	DISCESA L= 898.43 m DH= -9.52 m p= -0.01060		DISCESA L= 247.42 m DH= -0.10 m p= -0.00042		DISCESA L= 247.42 m DH= -0.10 m p= -0.00042		DISCESA L= 247.42 m DH= -0.10 m p= -0.00042	
Progressive livelle	4+515.000		5+413.427		5+660.851		5+660.851	



DESCRIZIONE	CODICE
NOTE GENERALI	
CARATTERISTICHE DEI MATERIALI	

Quote	Terreno	Progetto	Etimetriche	Progressive	Parziali	Andamento planimetrico
133.70	133.70	133.70	0+000.000	0+000.000	132.000	RETIFILLO
133.91	133.91	133.91	0+132.000	0+132.000	58.516	
133.86	133.86	133.86	0+195.516	0+195.516	84.351	
133.92	133.92	133.92	0+274.867	0+274.867	79.567	
134.08	134.08	134.08	0+354.434	0+354.434	50.337	
133.92	133.92	133.92	0+409.771	0+409.771	79.990	
133.98	133.98	133.98	0+489.761	0+489.761	81.300	
134.06	134.06	134.06	0+571.061	0+571.061	83.698	
134.06	134.06	134.06	0+654.799	0+654.799	51.145	
135.14	135.14	135.14	0+705.904	0+705.904	54.223	
135.94	135.94	135.94	0+790.127	0+790.127	69.950	
135.96	135.96	135.96	0+830.077	0+830.077	57.248	
136.61	136.61	136.61	0+887.325	0+887.325	64.081	
137.27	137.27	137.27	0+951.405	0+951.405	53.112	
137.55	137.55	137.55	1+004.518	1+004.518	76.677	
138.70	138.70	138.70	1+081.195	1+081.195	65.841	
138.64	138.64	138.64	1+143.036	1+143.036	36.484	
138.69	138.69	138.69	1+205.520	1+205.520	71.474	
138.65	138.65	138.65	1+274.894	1+274.894	62.977	
138.97	138.97	138.97	1+337.071	1+337.071	55.167	
139.12	139.12	139.12	1+393.138	1+393.138	54.328	
139.27	139.27	139.27	1+449.466	1+449.466	58.254	
139.28	139.28	139.28	1+505.791	1+505.791	62.500	
139.25	139.25	139.25	1+574.471	1+574.471	68.096	
139.81	139.81	139.81	1+642.567	1+642.567	74.374	
140.01	140.01	140.01	1+716.941	1+716.941	54.728	
140.18	140.18	140.18	1+777.669	1+777.669	75.089	
140.18	140.18	140.18	1+846.758	1+846.758	91.543	
140.37	140.37	140.37	1+938.301	1+938.301	74.578	
140.62	140.62	140.62	2+012.875	2+012.875	69.596	
140.79	140.79	140.79	2+082.475	2+082.475	61.921	
140.87	140.87	140.87	2+143.396	2+143.396	58.564	
140.93	140.93	140.93	2+202.960	2+202.960	53.510	
141.07	141.07	141.07	2+256.475	2+256.475	58.762	
141.16	141.16	141.16	2+315.237	2+315.237	56.802	
141.24	141.24	141.24	2+372.039	2+372.039	64.701	
141.33	141.33	141.33	2+435.740	2+435.740	70.025	
141.43	141.43	141.43	2+506.765	2+506.765	89.743	
141.54	141.54	141.54	2+586.508	2+586.508	69.791	
141.68	141.68	141.68	2+666.299	2+666.299	119.035	
141.79	141.79	141.79	2+755.334	2+755.334	55.467	
141.97	141.97	141.97	2+847.286	2+847.286	65.179	
142.05	142.05	142.05	2+922.409	2+922.409	38.264	
142.18	142.18	142.18	3+002.852	3+002.852	70.557	
142.28	142.28	142.28	3+087.286	3+087.286	61.179	
142.34	142.34	142.34	3+172.701	3+172.701	82.264	
142.40	142.40	142.40	3+263.586	3+263.586	65.684	
142.55	142.55	142.55	3+359.159	3+359.159	81.804	
142.55	142.55	142.55	3+456.490	3+456.490	60.557	
142.58	142.58	142.58	3+552.977	3+552.977	31.165	
142.58	142.58	142.58	3+654.142	3+654.142	33.330	
142.58	142.58	142.58	3+759.472	3+759.472	56.593	
142.58	142.58	142.58	3+864.065	3+864.065	61.386	
142.58	142.58	142.58	3+972.711	3+972.711	33.330	
142.58	142.58	142.58	4+084.300	4+084.300	49.644	
142.58	142.58	142.58	4+198.514	4+198.514	34.883	
142.58	142.58	142.58	4+319.381	4+319.381	72.542	
142.58	142.58	142.58	4+443.194	4+443.194	80.252	
142.58	142.58	142.58	4+572.432	4+572.432	92.040	
142.58	142.58	142.58	4+702.110	4+702.110	52.686	
142.58	142.58	142.58	4+832.000	4+832.000	33.330	
142.58	142.58	142.58	4+961.666	4+961.666	51.290	
142.58	142.58	142.58	5+091.194	5+091.194	52.305	
142.58	142.58	142.58	5+220.202	5+220.202	52.630	
142.58	142.58	142.58	5+349.000	5+349.000	144.000	

COMMITTENTE:

ALTA SOVRIGLIANZA:

GENERAL CONTRACTOR:

INFRASTRUTTURE FERROVIARIE STRATEGICHE DEFINITE DALLA LEGGE OBIETTIVO N. 443/01
LINEA A.V. /A.C. TORINO - VENEZIA Tratta MILANO - VERONA
Lotto funzionale Brescia-Verona
PROGETTO DEFINITIVO

PROFILO LONGITUDINALE INTERCONNESSIONE BRESCIA EST
BINARIO DISPARI
TAVOLA N° 021

Verificato: _____ Data: _____
Approvato: _____ Data: _____

COMMESSA: I105 LOTTO: 00 FASE: D E2 F5 OPERA/DESCRIZIONE: I10001 PROG. REV.: 021 0 SCALA: 1:5000/1:500

PROGETTAZIONE GENERAL CONTRACTOR

Rev.	Data	Descrizione	Redatto	Data	Verificato	Data	Progettato	Data	Autorizzato/Data
0	31/03/14	EMISSIONE PER CDS	[Signature]	31/03/14	[Signature]	31/03/14	[Signature]	31/03/14	Cepav due Consorzio Project Director [Signature]
1									
2									
3									

Sapem S.p.a. COMM. 032121 Data: 31/03/14 Doc: 10116_10.dwg

Progetto cofinanziato dalla Unione Europea

Scale di plot: 1:1