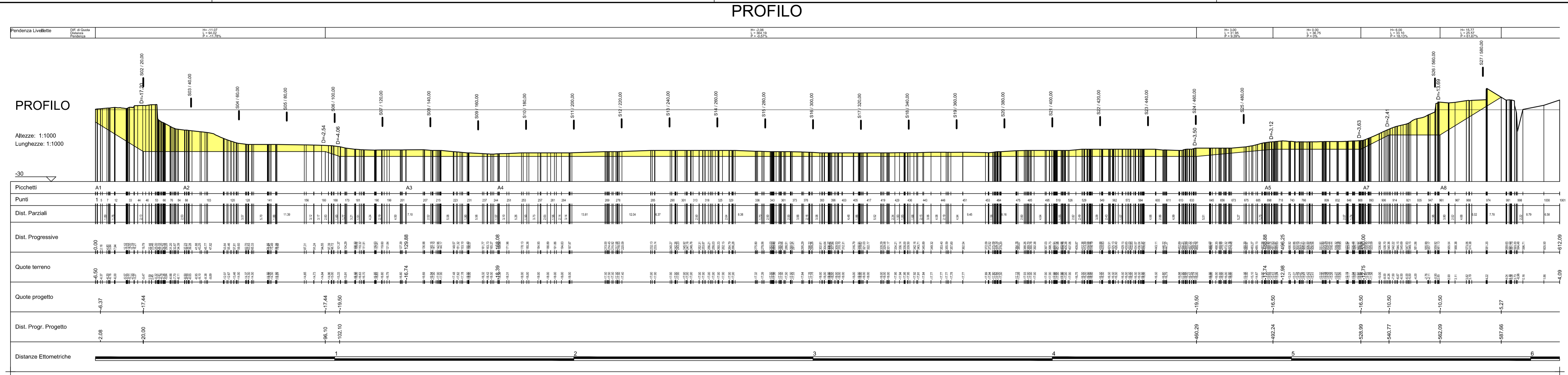
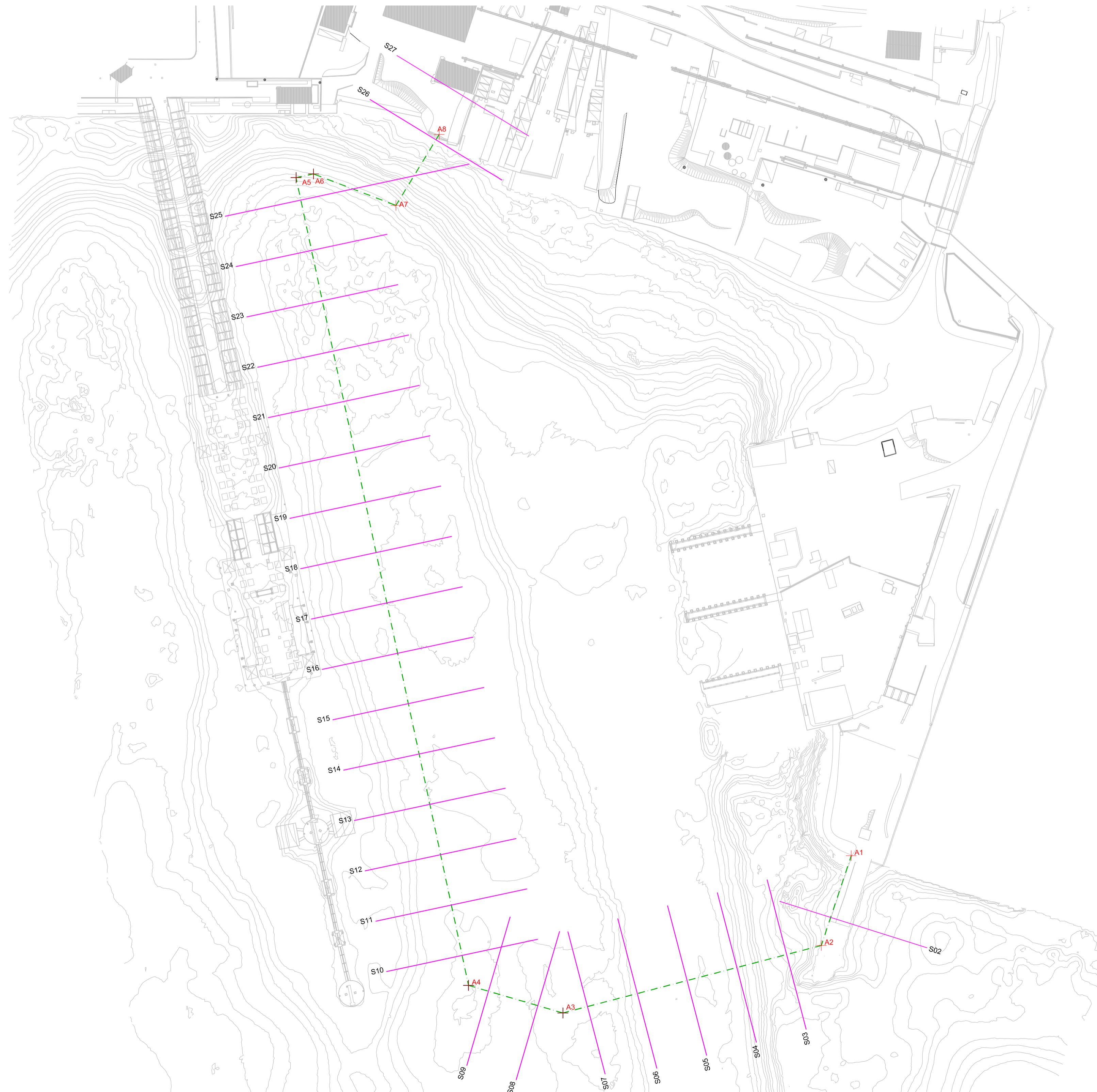
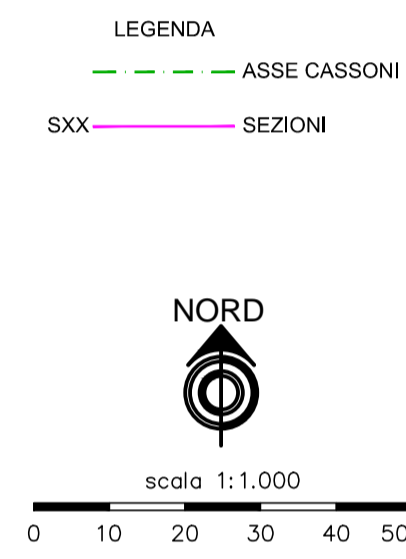


PROFILO: Tabella Volumi

Sezione1	Sezione2	A1	A2	Sup. Media	Distanza	Vol. Scavo	Scavo Tot.
S02	S03	-24.3	-303.46	-413.88	20	-8277.57	
S02	S03	-1.78	0	-0.89	20	-17.82	
						-8295.4	-8295.4
S03	S04	-265.46	-65.47	-165.47	20	-3309.35	
S03	S04	-38	0	-19	20	-379.97	
						-3699.32	-11984.72
S04	S05	-65.1	-48.47	-56.79	20	-1135.75	
S04	S05	-0.37	0	-0.18	20	-3.69	
						-1139.44	-13124.15
S05	S06	-48.47	-78.47	-63.47	20	-1269.47	
S05	S06	0	-2.17	-1.08	20	-21.66	
						-1291.13	-14415.28
S06	S07	-80.64	-65.79	-73.22	20	-1464.3	
S06	S07	0	-0.06	-0.03	20	-0.58	
						-1464.88	-15880.16
S07	S08	-65.85	-67.81	-66.83	19.28	-1288.27	
S07	S08	0	-0.04	-0.02	19.28	-0.35	
						-1288.62	-17168.79
S08	S09	-67.85	-41.1	-54.48	20	-1089.51	
S08	S09	0	-0.06	-0.03	20	-0.62	
						-1090.12	-18258.91
S09	S10	-41.16	-41.37	-41.26	17.29	-713.32	
						-713.32	-18972.23
S10	S11	-41.3	-44.72	-43.01	20	-860.17	
S10	S11	-0.07	0	-0.04	20	-0.71	
						-860.88	-19833.11
S11	S12	-44.54	-55.79	-50.16	20	-1003.23	
S11	S12	-0.18	0	-0.09	20	-1.84	
						-1005.07	-20838.19
S12	S13	-55.79	-61.51	-58.65	20	-1172.93	
						-1172.93	-22011.12
S13	S14	-61.51	-64.09	-62.8	20	-1255.97	
S13	S14	0	-0.05	-0.02	20	-0.49	
						-1256.46	-23267.57
S14	S15	-64.14	-54.68	-59.41	20	-1188.17	
S14	S15	0	-0.26	-0.13	20	-2.62	
						-1190.8	-24458.37
S15	S16	-54.94	-44.21	-49.58	20	-991.51	
S15	S16	0	-0.17	-0.08	20	-1.65	
						-993.16	-25451.54
S16	S17	-44.37	-43.64	-44.01	20	-880.17	
S16	S17	0	-0.24	-0.12	20	-2.36	
						-882.53	-26334.07
S17	S18	-43.64	-45.59	-44.62	20	-892.37	
S17	S18	-0.24	0	-0.12	20	-2.36	
						-894.74	-27228.8
S18	S19	-45.58	-48.58	-47.08	20	-941.61	
						-941.61	-28170.41
S19	S20	-48.57	-53.19	-50.88	20	-1017.6	
S19	S20	-0.01	0	-0.01	20	-0.13	
						-1017.73	-29188.14
S20	S21	-52.72	-63.3	-58.01	20	-1160.24	
S20	S21	-0.48	0	-0.24	20	-4.76	
						-1165	-30353.14
S21	S22	-63.3	-79.42	-71.36	20	-1427.21	
S21	S22	0	-0.63	-0.32	20	-6.32	
						-1433.52	-31786.67
S22	S23	-79.74	-72.7	-76.22	20	-1524.34	
S22	S23	-0.31	0	-0.16	20	-3.13	
						-1527.46	-33314.13
S23	S24	-72.7	-83.4	-78.05	20	-1561	
S23	S24	0	-0.31	-0.16	20	-3.12	
						-1564.13	-34878.26
S24	S25	-83.72	-62.73	-73.22	20	-1464.44	
S24	S25	0	-118.99	-59.49	20	-1189.9	
						-2654.34	-37532.6
S25	S26	-72.99	-287.4	-180.19	57.64	-10386.44	
S25	S26	-108.73	0	-54.37	57.64	-3133.66	
						-13520.1	-51052.69
S26	S27	-32.62	-35.3	-133.66	20	-2673.23	
S26	S27	-55.42	0	-27.71	20	-554.16	
						-3227.39	-54280.09



PLANIMETRIA



CONVENZIONE ATTUATIVA 21 DICEMBRE 2012 E ADDENDUM (2014) SOTTOSCRITTI DA AUTORITA' PORTUALE DI GENOVA, COCIV, REGIONE LIGURIA E COMUNE DI GENOVA

**AUTORITA' PORTUALE DI GENOVA**

**COCIV**  
Consorzio Collegamenti Integrati Veloci

**PROGETTO DEFINITIVO DELLA NUOVA CALATA AD USO CANTIERISTICA NAVALE ALL'INTERNO DEL PORTO PETROLI DI GENOVA SESTRI PONENTE E DELLA SISTEMAZIONE IDRAULICA DEL RIO MOLINASSI**

LOTTO 2  
NUOVA CALATA AD USO CANTIERISTICA NAVALE

Sezioni trasversali degli scavi di imbasamento 1/4

PROGETTISTA INCARICATO DA COCIV

**MWH**  
BUILDING A BETTER WORLD

MWH S.p.A. Centro Direzionale Milano 2 - Palazzo Carcano 20090 Segrate (MI) - Tel. +39 02 70461 Fax. +39 02 98030731 Mail: mwh.italy@mwh.com

SCALA: 1:1.000

COMMESSA: 4 5 0 2 3 7 6 FASE: D LOTTO: 2 TIPO DOC: D PROGR: 0 3 5 REV: B

Rev.	Descrizione Emisione	Redatto	Data	Verificato	Data	Approvato	Data
A	Prima Emisione	Castagnella	30/09/2014	Poli	30/09/2014	Susani	30/09/2014
B	Recupero progetto di risoluzione otocoditi	Castagnella	05/12/014	Poli	05/12/014	Susani	05/12/014

IL PROGETTISTA  
Dott. Ing. B. Susani

VALIDATO: AUTORITA' PORTUALE DI GENOVA

IL RUP  
Dott. Ing. A. Pieracci

ASSISTENTI AL RUP  
Dott. Geol. G. Canepa  
Geom. I. Dellepiane  
Geom. G. Di Luca  
P.I. F. Piazza  
Dott. Ing. D. Sclotto  
Dott. Ing. M. Vaccari  
Dott. Ing. C. Vincenzi

Nome File: d.02.0035.1-4-B