


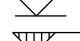
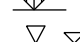







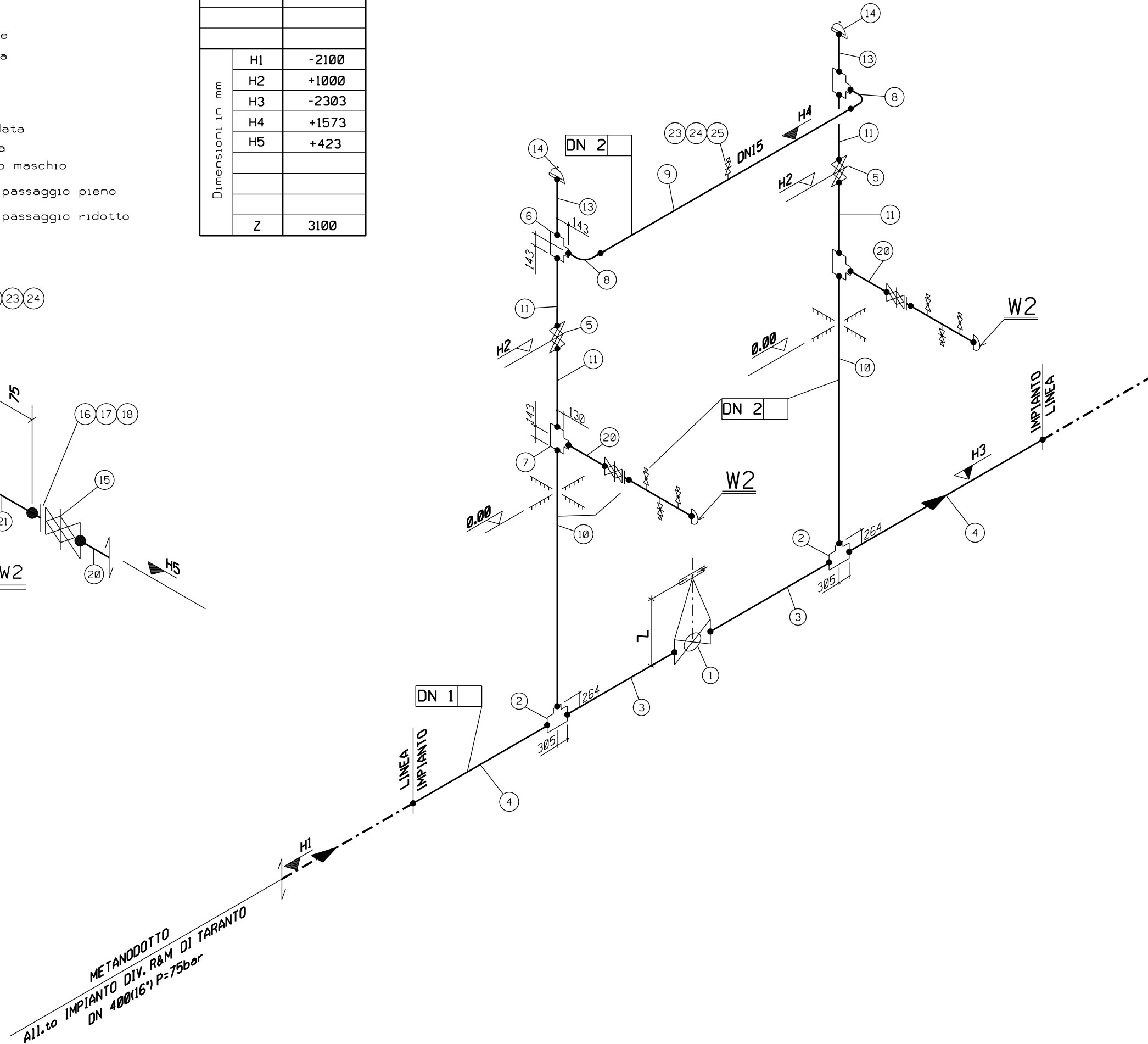
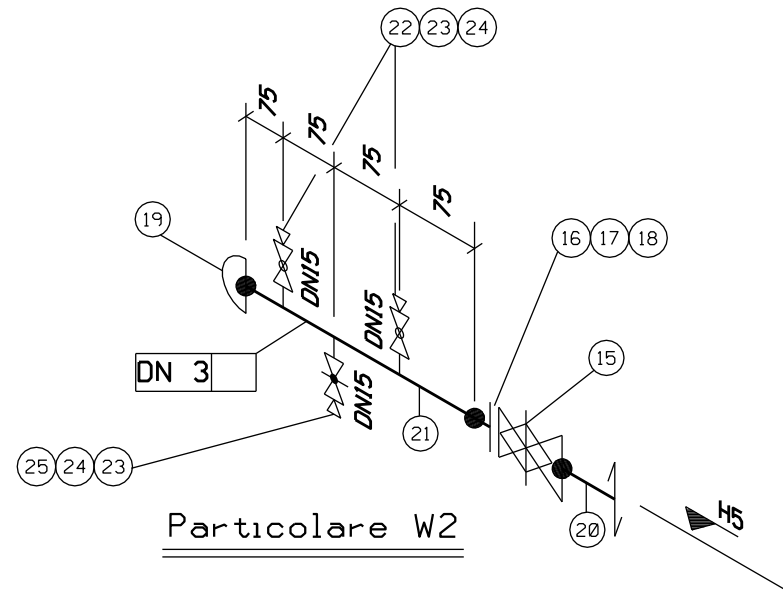


LEGENDA

-   $\varnothing$  tubazione
-  Fondo tubazione
-  Copertura tubazione
-  Elevazione generica
-  Fondo valvola
-  Quota asse valvola
-  Valvola telecomandata
-  Valvola motorizzata
-  Valvola a rubinetto maschio
-  Valvola a sfera a passaggio pieno
-  Valvola a sfera a passaggio ridotto
-  Valvola a spillo

DN1	400(16")
DN2	150(6")
DN3	100(4")
Dimensioni in mm	
H1	-2100
H2	+1000
H3	-2303
H4	+1573
H5	+423
Z	3100



METANODOTTO  
All.to IMPIANTO DIV. R&M DI TARANTO  
DN 400(16") P=75bar