


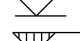
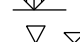







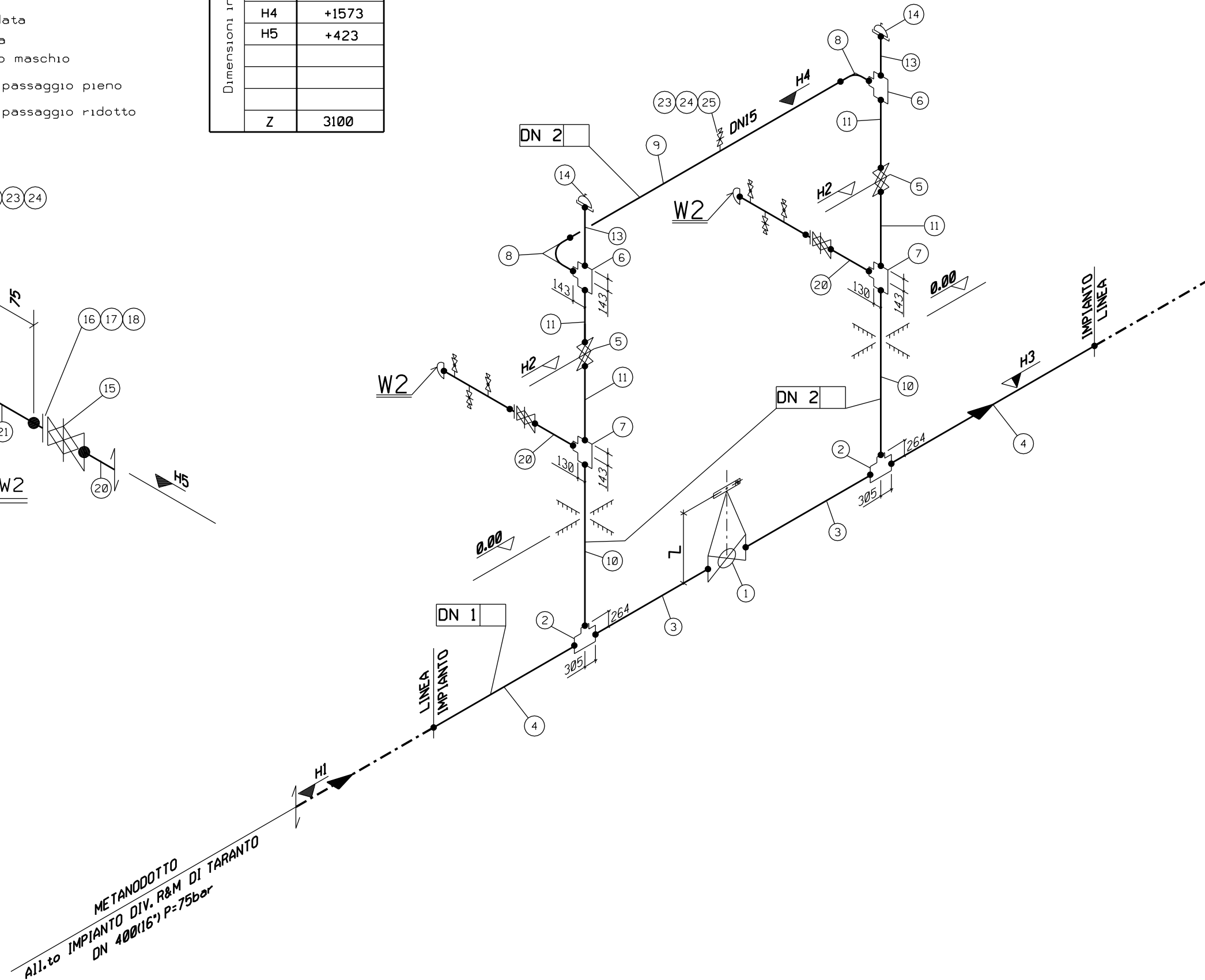
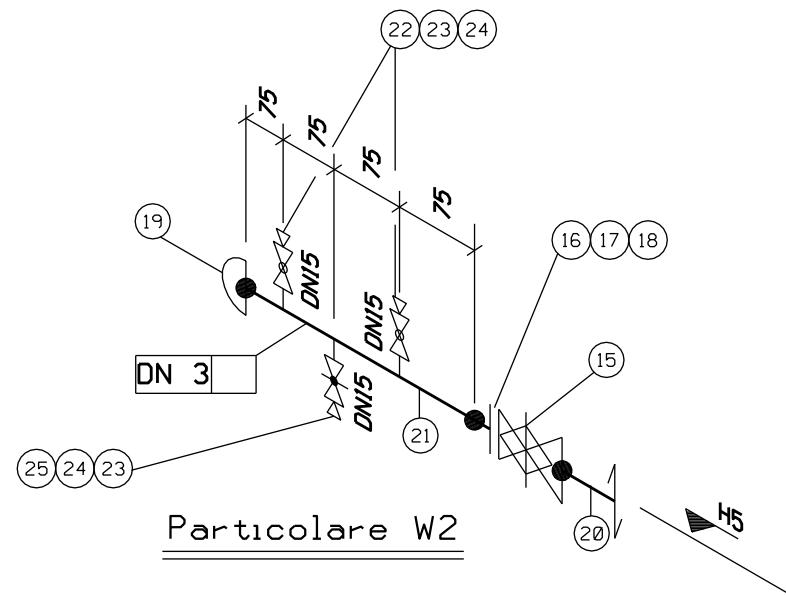


LEGENDA

-  ☒ tubazione
-  ▽ Fondo tubazione
-  ▽ Copertura tubazione
-  ▽ Elevazione generica
-  ▽ Fondo valvola
-  ▽ Quota asse valvola
-  ☒ Valvola telecomandata
-  ☒ Valvola motorizzata
-  ☒ Valvola a rubinetto maschio
-  ○ Valvola a sfera a passaggio pieno
-  ☒ Valvola a sfera a passaggio ridotto
-  ☒ Valvola a spillo

DN1	400(16")
DN2	150(6")
DN3	100(4")
Dimensioni in mm	
H1	-2100
H2	+1000
H3	-2303
H4	+1573
H5	+423
Z	3100



METANODOTTO
All.to IMPIANTO DIV. R&M DI TARANTO
DN 400(16") P=75bar