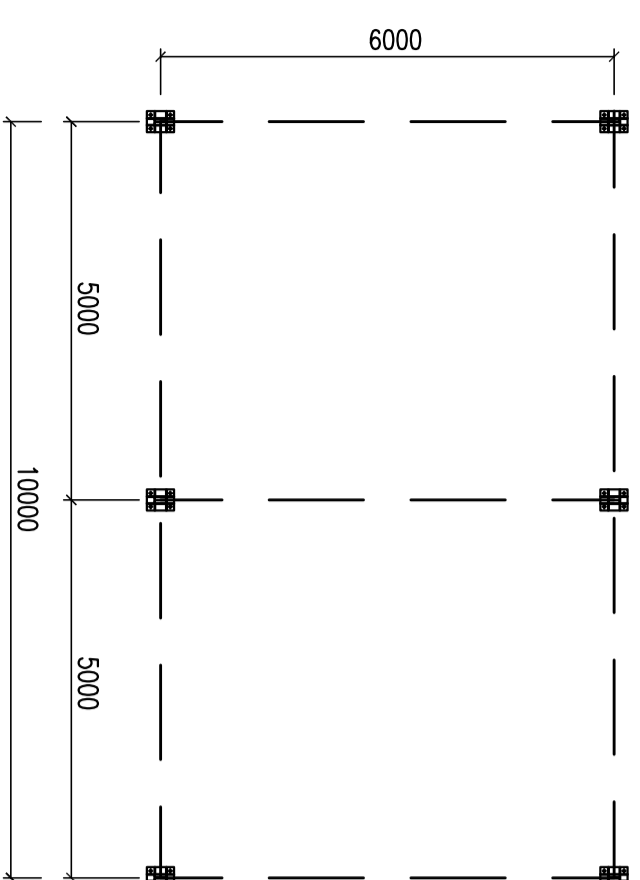
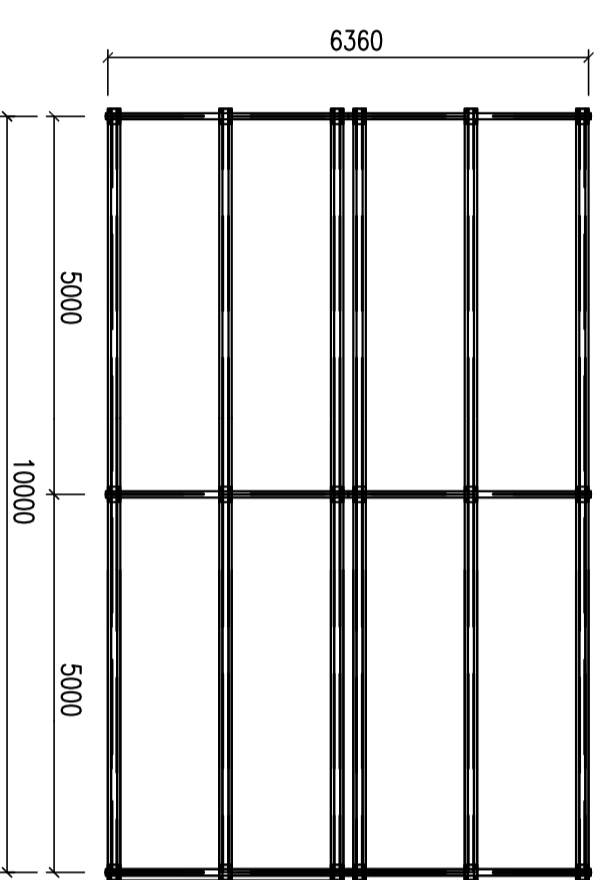


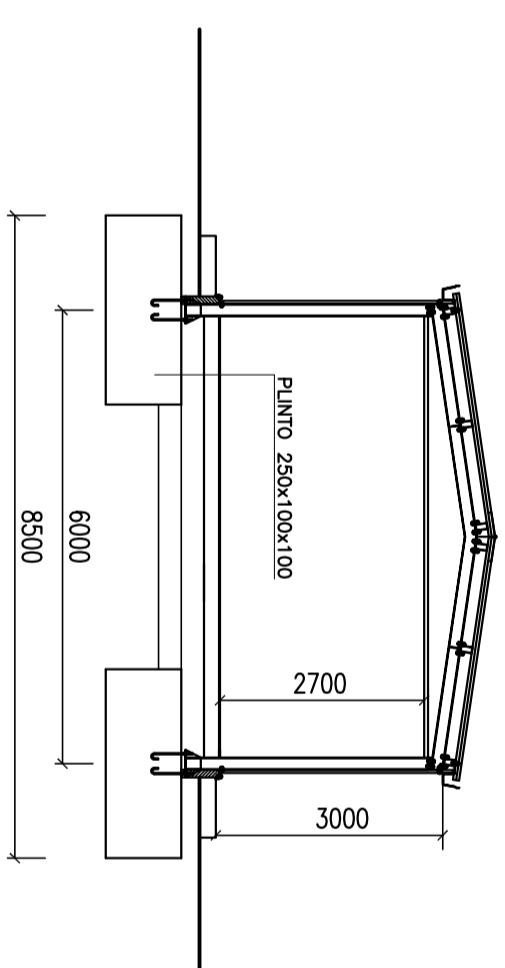
PIANTA PIASTRINI (1:100)



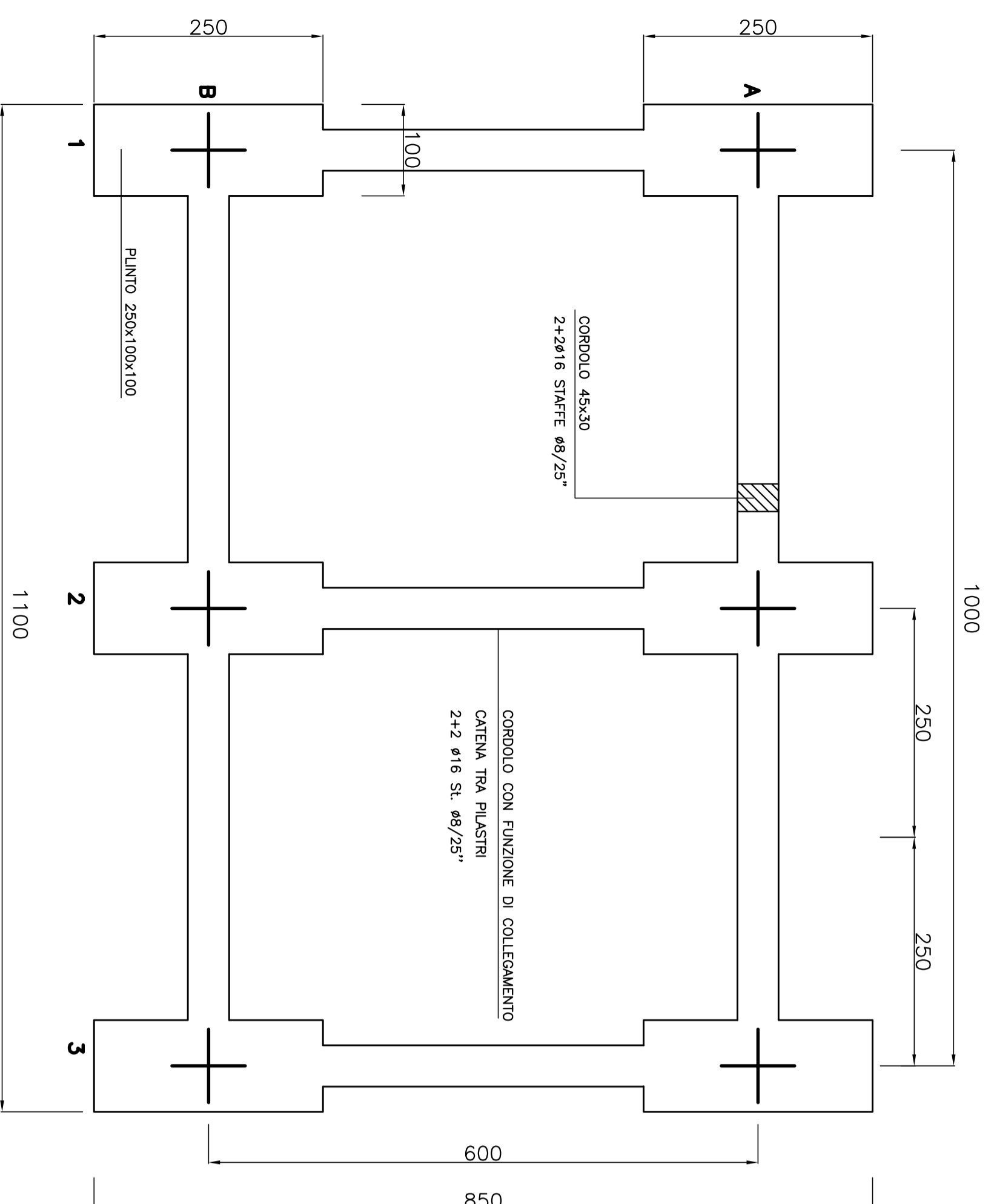
CARPENTERIA COPERTURA (1:100)



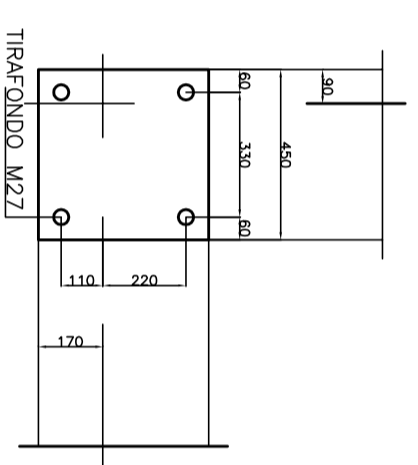
SEZIONE TRASVERSALE (1:100)



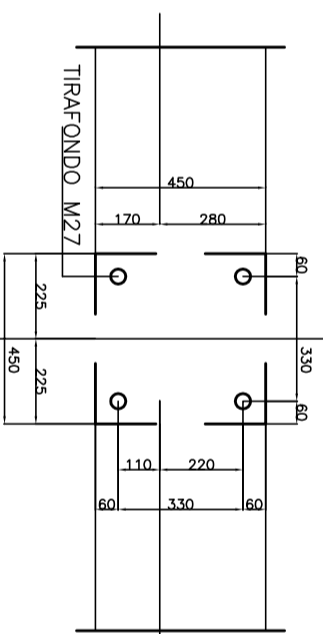
PIANTA FONDAZIONI (1:50)



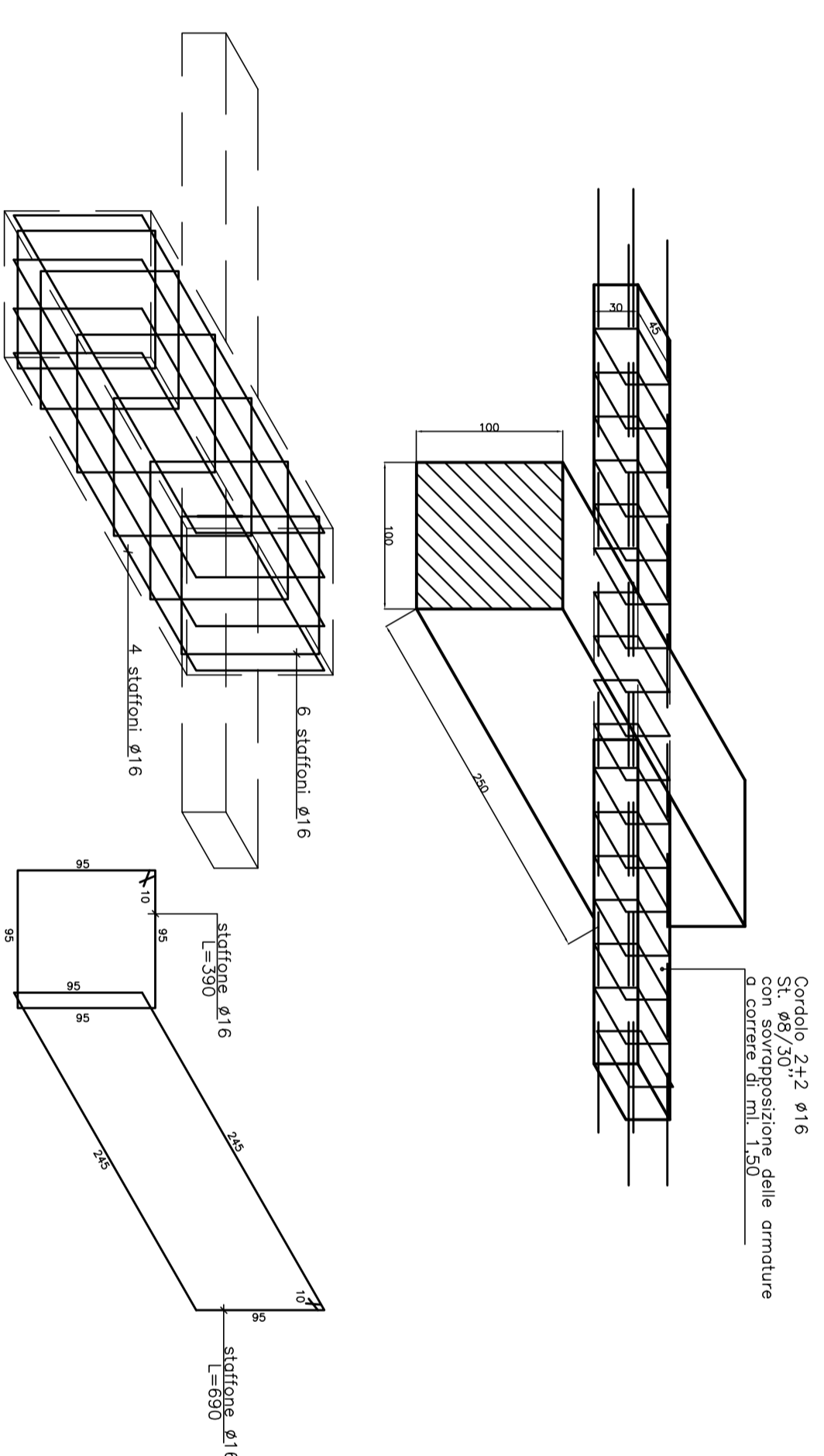
PARTIC. B1 (1:10)



PARTIC. B2 (1:10)



PART. PLINTO 250x100x100 (1:20)



MATERIALI

- CLS C30/35
- ACCIAIO B450C
- MAGRONE C15/20
- COPRIFERRO MINIMO 3CM
- TIRAFONDI: VITE CLASSE 8.8 - DADO 6S
- ACCIAIO PER CARPENTERIE: Fe 360
- INCIDENZA FERRO: 150 Kg/mc.

COMMITTENTE:



ALTA SORVEGLIANZA:



GENERAL CONTRACTOR:



INFRASTRUTTURE FERROVIARIE STRATEGICHE DEFINITE DALLA LEGGE OBBIETTIVO N.443/01
TRATTA A.V./A.C. TERZO VALICO DEI GIOVI
PROGETTO ESECUTIVO

CA 26 - CANTIERE OPERATIVO GERBIDI COP10

PREFABBRICATO USO MAGAZZINO:
CARPENTERIA E ARMATURA FONDAZIONI

GENERAL CONTRACTOR	DIRETTORE LAVORI	SCALA:
Consorzio COCIV Ing. A. Palomba		VARIE

PROGETTAZIONE	COMMESSA	LOTTO	FASE	ENTE	TIPO DOC.	OPERABISIPERMAN.	PROGR.	REV.
Rev.	Descrizione emissione	Numero	COCCIV	Data	Verificato	Data	Proprietaria	Data
A00	Primo Emendamento	COCCIV	03/11/2014	A. Palomba	03/11/2014			