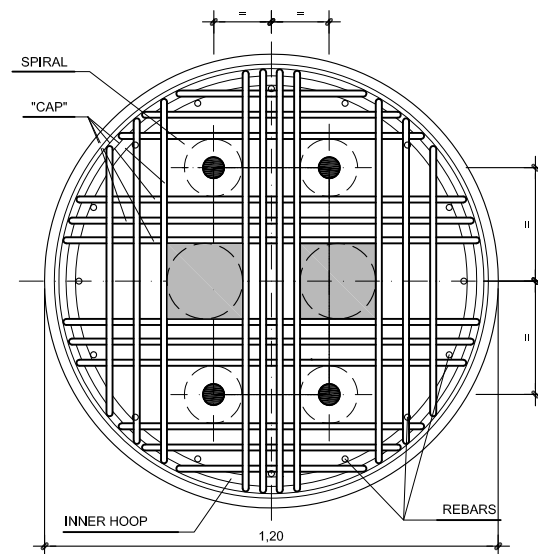
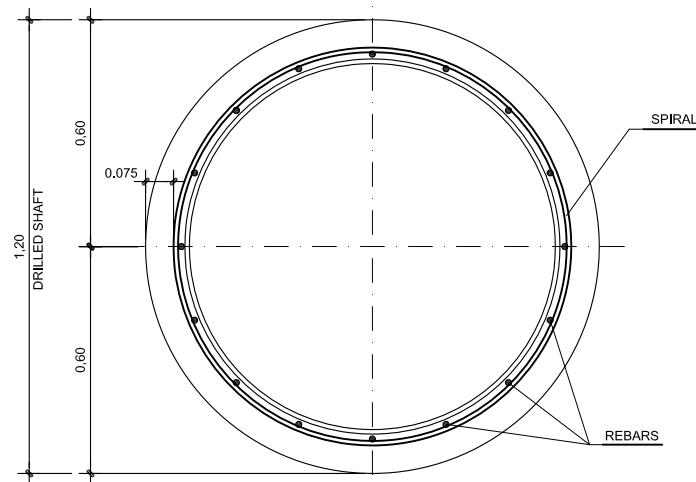
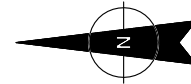


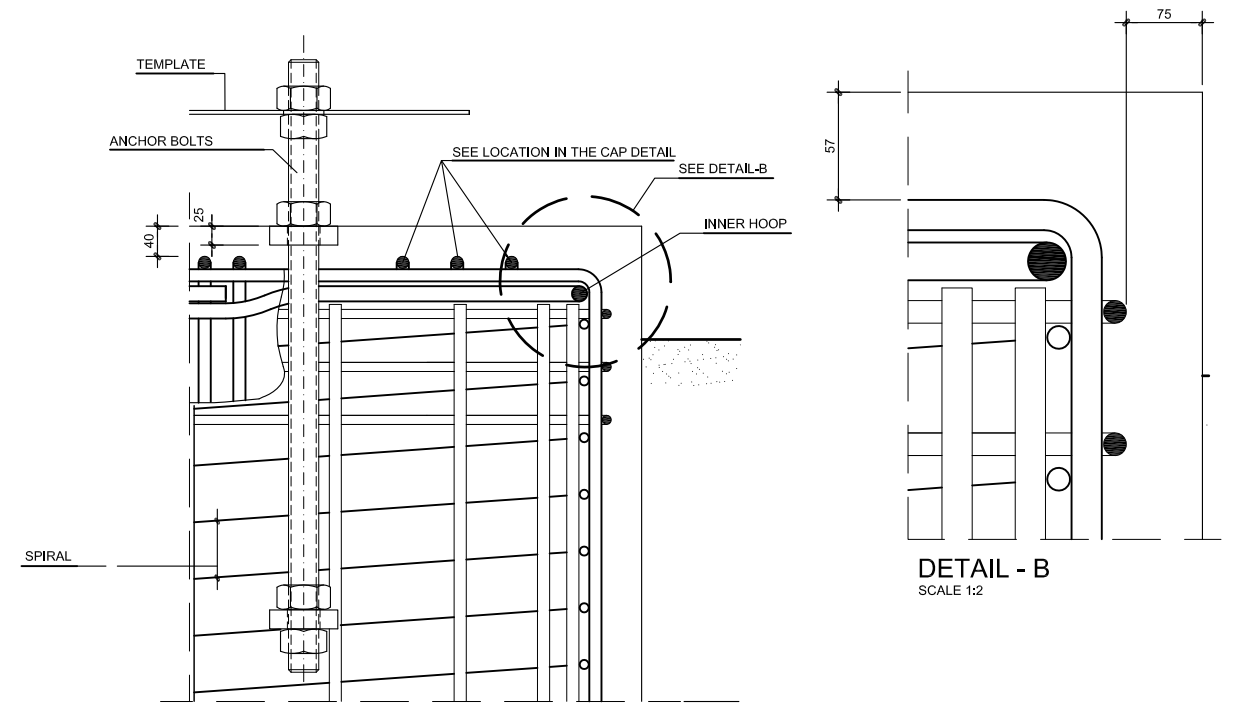
ELEVATION  
CAISSON TYPE -2- (REGULAR) Ø1.20  
SCALE 1:10



CAP DETAIL. PLAN  
SCALE 1:10



SECTION A-A  
SCALE 1:10



DETAIL - A  
SCALE 1:5

DETAIL - B  
SCALE 1:2

MATERIALS	
CONCRETE	C 25/30
REINFORCEMENT	fy=500MPa
ANCHOR BOLTS	8,8 (UNE-ISO-898-1)
WASHER	S355 JR (UNE-EN-10025)
NUTS	GR.8 (UNE-ISO-898-6)

CONCRETE COVER:  
- TO LATERAL SURFACE 75mm  
- TO TOP OF CONCRETE 40mm

CONCRETE CONSTRUCTION TOLERANCE NOTES:  
- MAXIMUM PERMISSIBLE VARIATION OF THE CENTERLINE OF CAISSONS SHALL BE ± 40mm  
- TOP OF CONCRETE ELEVATION SHALL NOT VARY MORE THAN ± 10mm FROM THE ELEVATIONS NOTED ON THE CAISSON SCHEDULES

ANCHOR BOLTS PLACEMENT TOLERANCE NOTES:  
- MAXIMUM TOLERANCES IN THE BOLT ALIGNMENT WILL BE:  
- ± 5mm WITH RESPECT TO THE PROJECTION OF THE BOLT  
- ± 7mm WITH RESPECT TO THE MIRRORS DESIGN ALIGNMENT CENTERLINE (NORTH-SOUTH) AND THE PYLON DESIGN CENTERLINE (EAST-WEST)  
- ± 3mm WITH RESPECT TO RELATIVE DISTANCE BETWEEN BOLTS

NOTES:-  
- SEE TECH. SPECIFICATIONS  
- PLASTIC COVER SPACERS SHALL BE PLACED ON VERTICAL REINFORCEMENT TO ENSURE CONCRETE COVER REQUERIMENTS  
- ALL MATERIAL STUCK TO THE STEEL SHALL BE REMOVED FROM THE ANCHOR BOLTS. NO TRACE OF DIRT, WAX, OIL OR GREASE SHALL BE ALLOWED  
- ANCHOR BOLT TEMPLATES SHALL REMAIN IN PLACE AT LEAST FOR THREE DAYS AFTER CONCRETE POURING  
- ANCHOR BOLT TEMPLATES SHALL REMAIN IN PLACE AT LEAST FOR THREE DAYS AFTER CONCRETE POURING

REV.	DESCRIPTION	DATE	DRAWN	CHECKED	APPROVED
B	FOR INFORMATION	12/2014	A.B.H.	J.R.L.	P.A.Z.
A	FOR INFORMATION	03/2014	ILL	J.R.L.	P.A.Z.

REVISIONS					
AUTHOR/OWNER: <b>SENER</b>		ENGINEERING: <b>SENER</b>		CONTRACTOR: <b>SENER</b>	
CAD FILE No: CER-SRCA-PC-9001-02-Rev B		PROJECT: <b>GONNOSFANADIGA CSP PROJECT</b>			
SCALE: 1:10		DRAWING TITLE: SOLAR FIELD COLLECTORS PILE FOUNDATIONS DETAILS TYPE 2- REGULAR			
REFERENCE: C227A10		DRAWING No: CER-SRCA-PC-9001		SHEET: 02 OF 03	

