

TABELLA MATERIALI

Table listing materials and their specifications, including concrete (CALCESTRUZZO), reinforcement (ACCIAIO), and various aggregates. Includes a table for 'CALCE VIVA' and 'CALCE IDRATA'.

SEZIONE A-A

SCALA 1:200

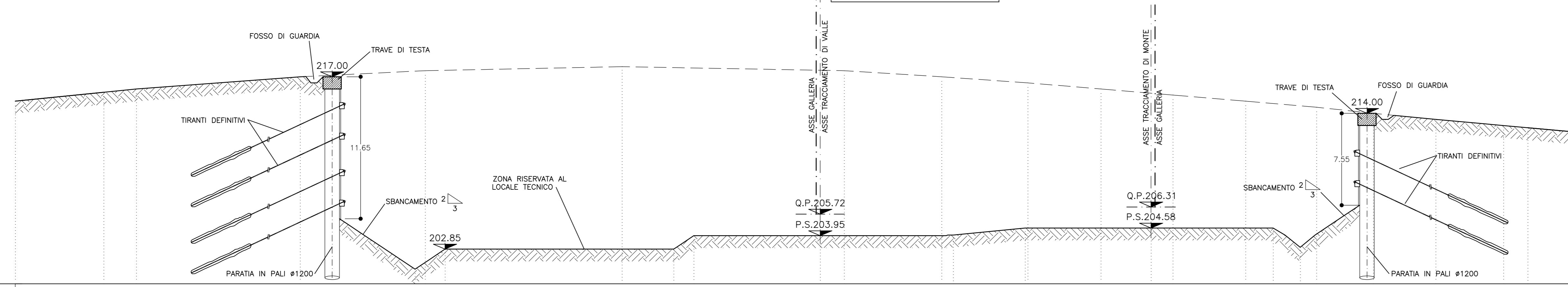


Table with two rows: 'PROGETTO' and 'TERRENO'. Columns include 'QUOTE' and 'DISTANZE PARZIALI' for various sections of the tunnel.

SEZIONE B-B

SCALA 1:200

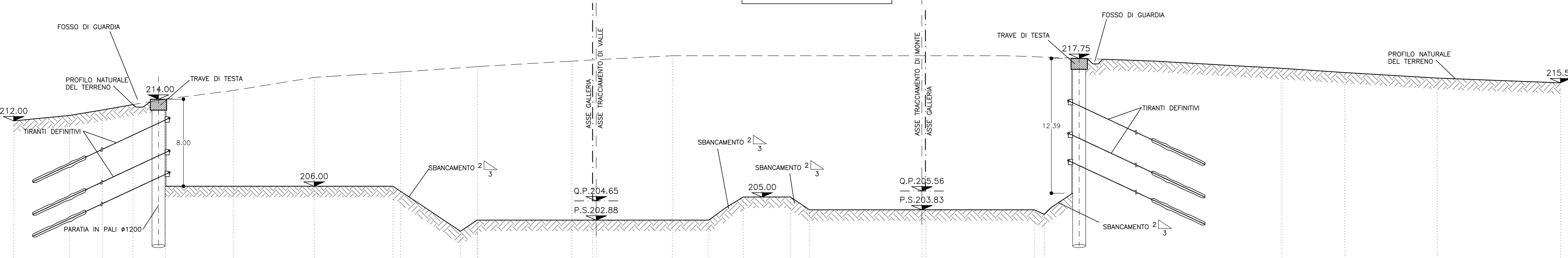


Table with two rows: 'PROGETTO' and 'TERRENO'. Columns include 'QUOTE' and 'DISTANZE PARZIALI' for various sections of the tunnel.

SEZIONE C-C

SCALA 1:200

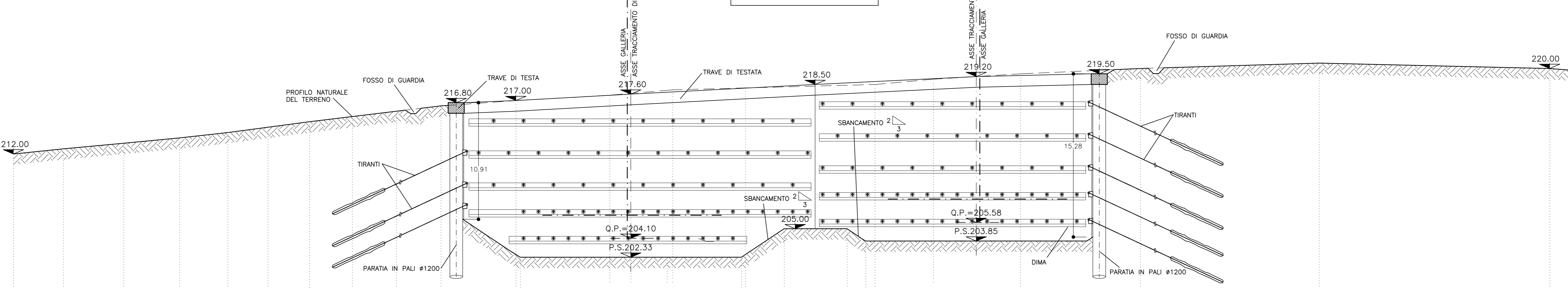


Table with two rows: 'PROGETTO' and 'TERRENO'. Columns include 'QUOTE' and 'DISTANZE PARZIALI' for various sections of the tunnel.

FASI ESECUTIVE (LE FASI OGGETTO DELLA TAVOLA SONO EVIDENZIATE IN GRASSETTO)

- List of execution phases (FASI ESECUTIVE) for the project, including macrophases A, B, C, and D, detailing construction steps like excavation, lining, and reinforcement.

LEGENDA table defining symbols for Q.P. (Quota Progetto in Asse Galleria), P.S. (Piano di Scavo), and Q.T.T. (Quota Testa Trave).

Logos for 'Autostrada Asti-Cuneo', 'REGIONE PIEMONTE', 'PROVINCIA DI ASTI', and 'PROVINCIA DI CUNEO'.

COLLEGAMENTO AUTOSTRADALE ASTI - CUNEO TRONCO II A21 (ASTI EST) - A6 (MARENE) LOTTO 6 RODDI - DIGA ENEL

PROGETTO ESECUTIVO OPERE D'ARTE IN SEDE

SEZIONI FASE B TAV. 1/3

Table with project metadata including dates, versions, and approval signatures.

Logos for 'SINA' and 'CONSIGLIO SPECIALIZZATO'.