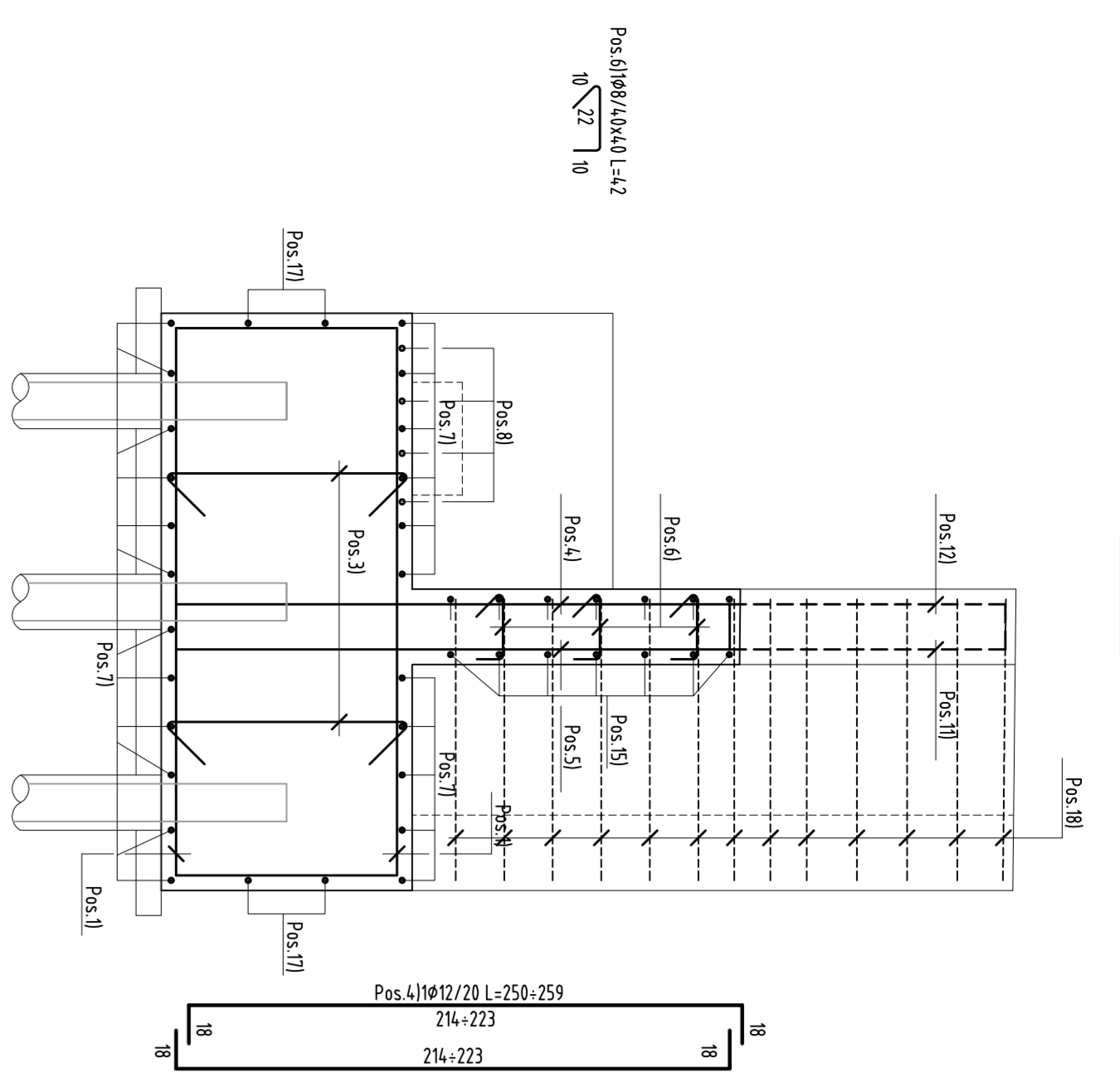
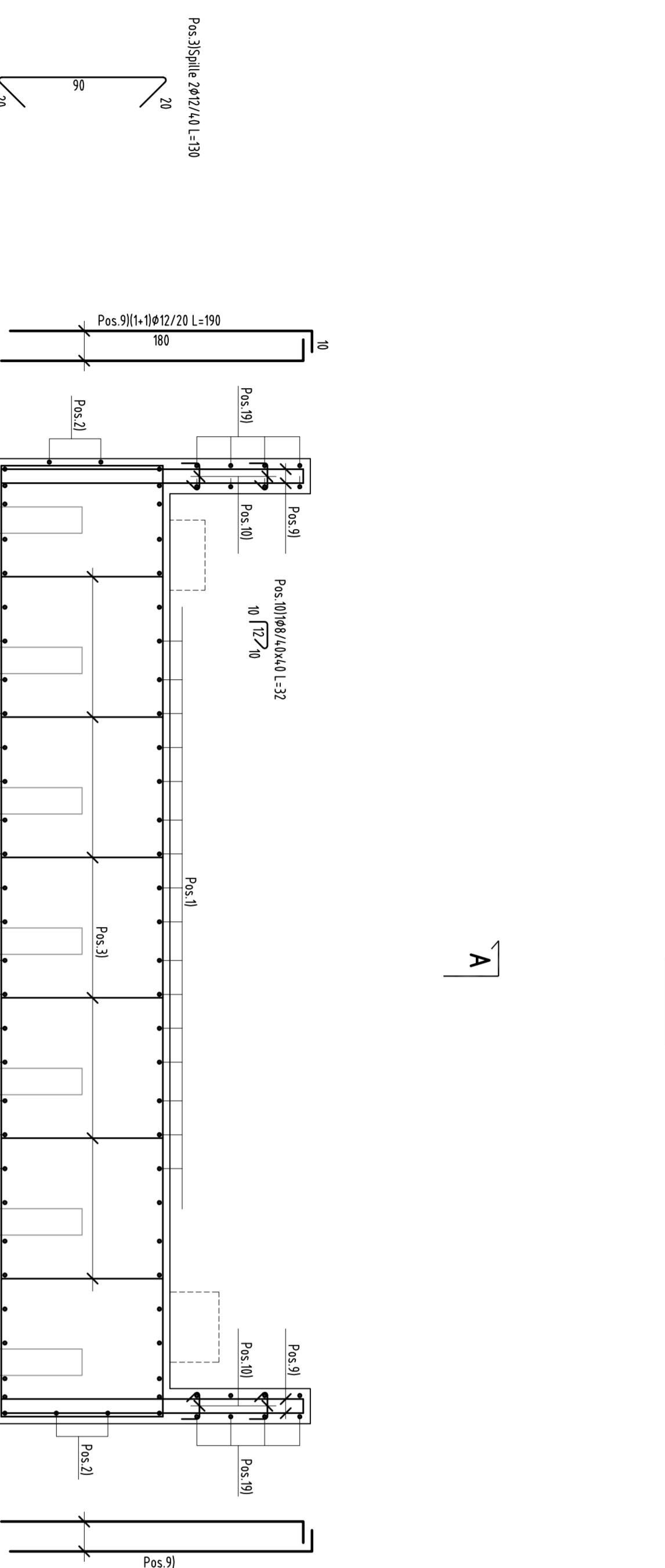


SEZIONE A-A  
Scala 1:25



SEZIONE B-B  
Scala 1:25



SEZIONE C-C  
Scala 1:25

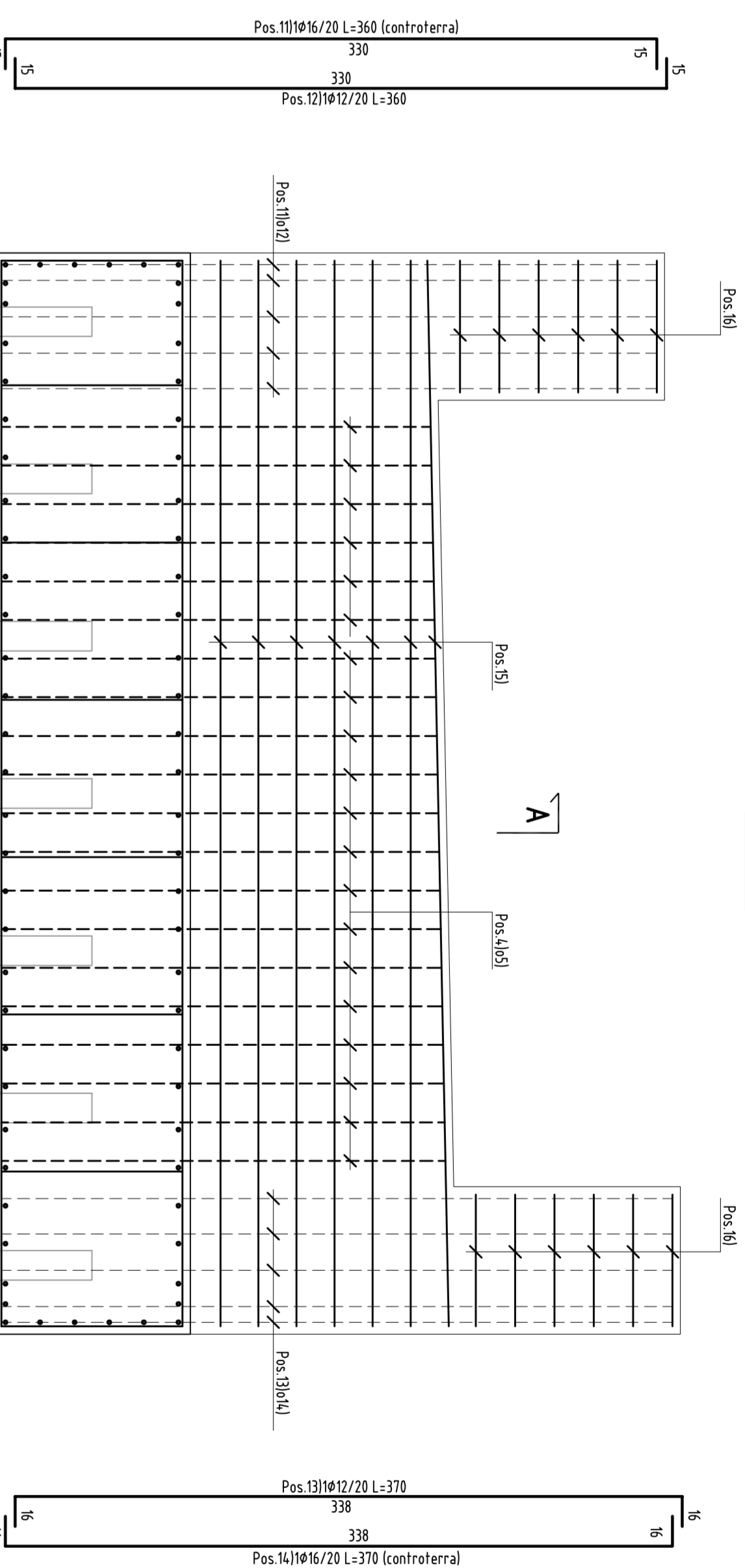
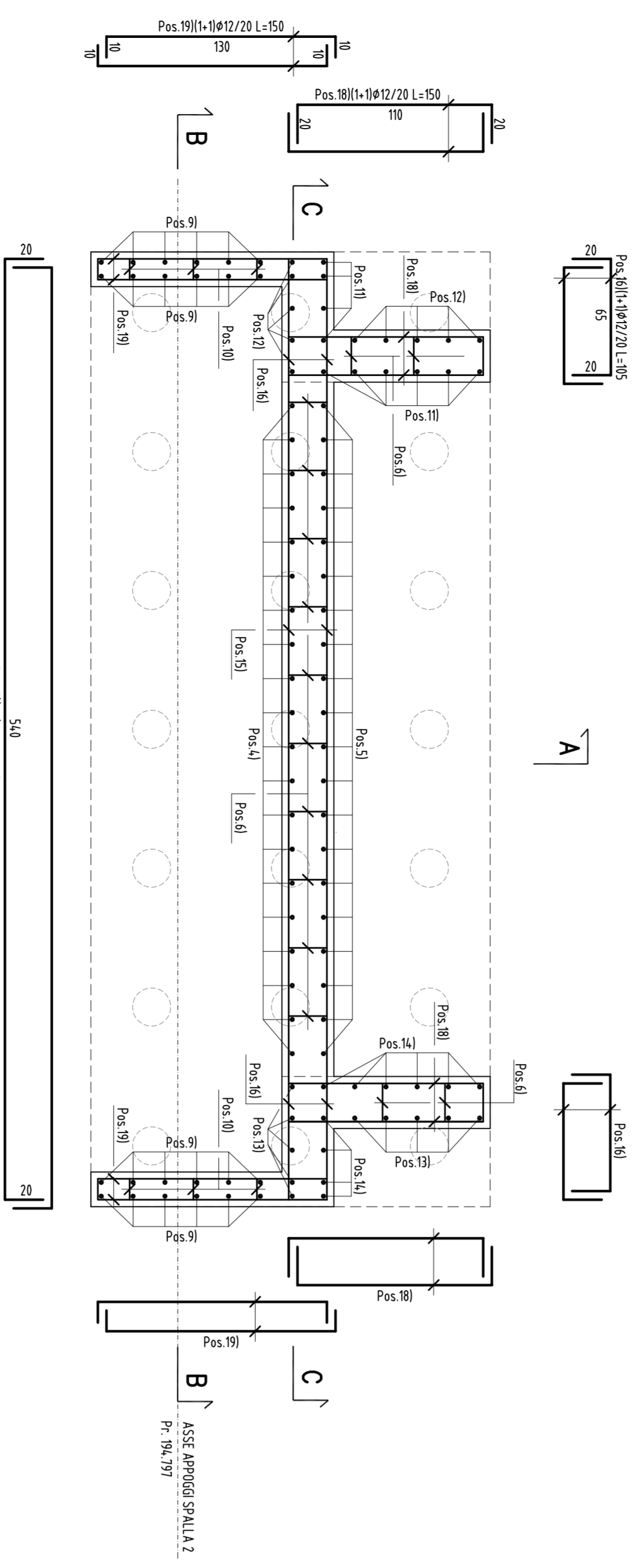


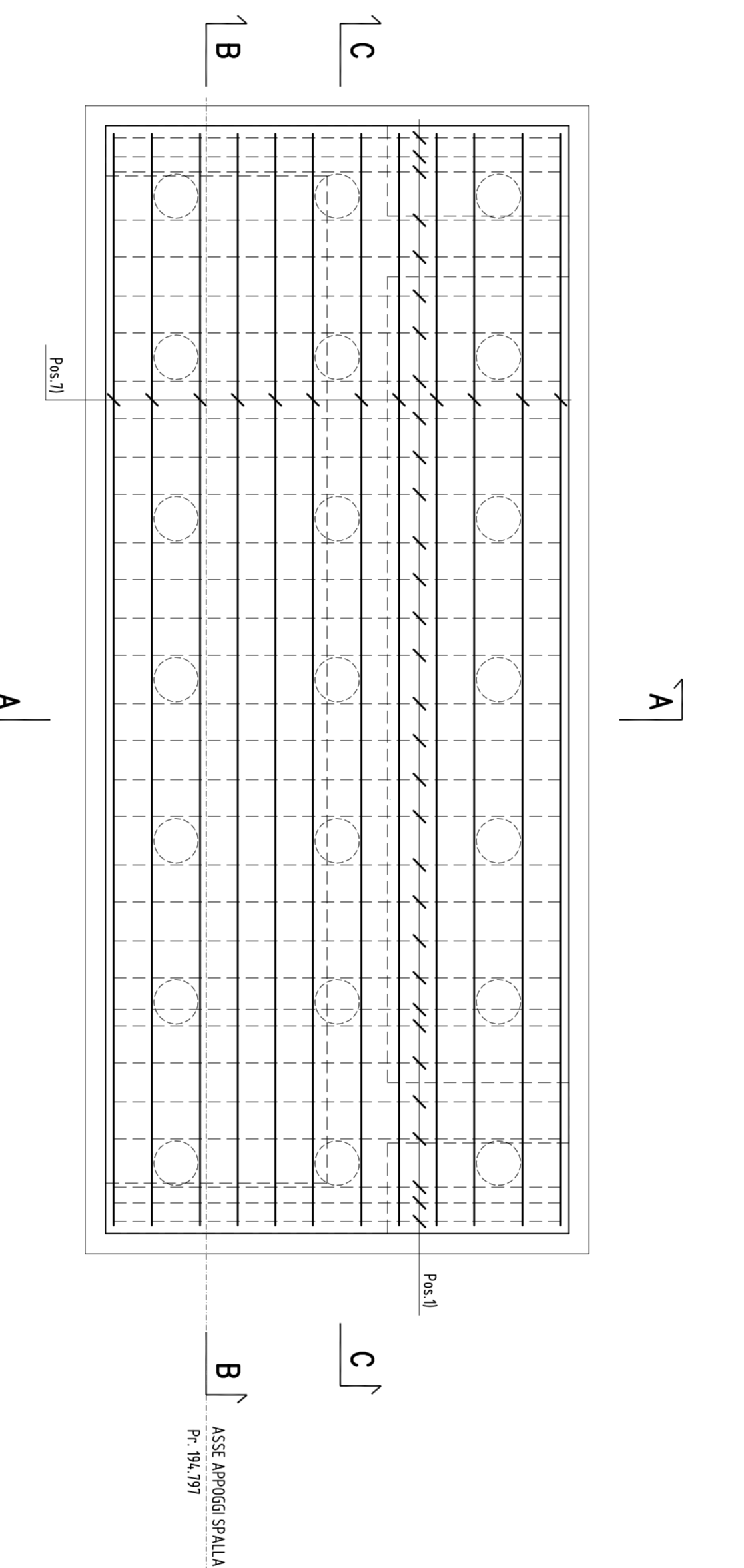
TABELLA MATERIALI

Table listing materials used in the project, including: ACCIAIO PER CARPENTERIA (steel for carpentry), ACCIAIO PER CEMENTO ARMATO (steel for reinforced concrete), SCELTA (selection of materials), STRUTTURE IN ELVAZIONE (elevation structures), and ACCIAIO PER MERGOLI (steel for piles).

PANTATA ALTO SPECCHIATO  
Scala 1:25



PANTATA FONDAZIONE  
Scala 1:25

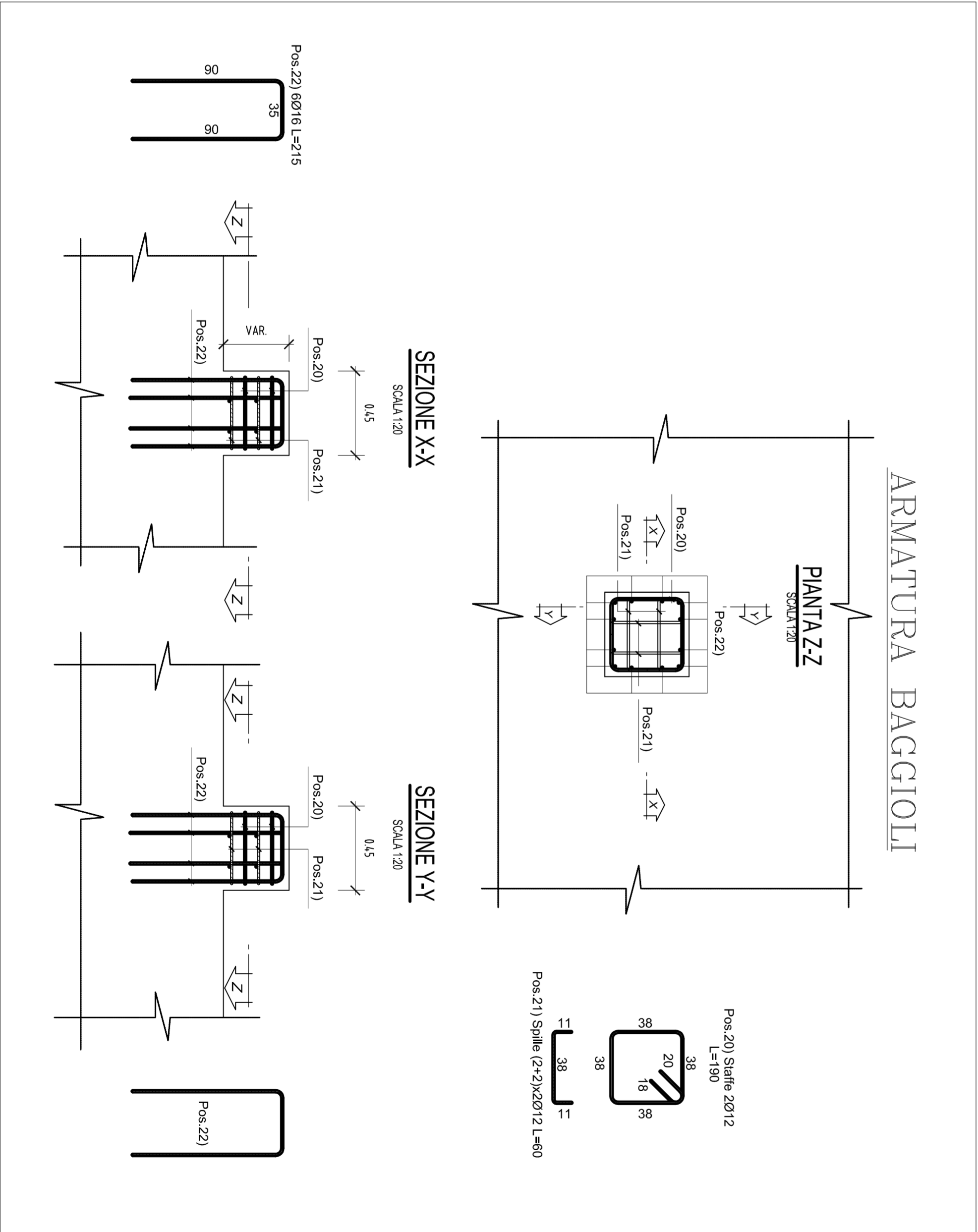


N.B.:  
- Le lunghezze sono espresse in cm.  
- Le lunghezze sono calcolate in asse barra.  
- Ultimo pos. è lo n°22.

POS.	φ / passo	Lunghezza (cm)	Peso cad. (Kg m)	N°	Peso (Kg)
1	20/20	375	2,466	60	535
2	16	315	1,378	4	20
3	12/40	130	0,888	12	14
4	12/20	254 med.	0,888	20	45
5	16/20	254 med.	1,378	20	80
6	8/40x40	42	0,395	84	14
7	16/20	700	1,378	24	265
8	20/20	120	2,466	8	24
9	12/20	190	0,888	24	40
10	8/40x40	32	0,395	12	2
11	16/20	360	1,378	10	57
12	12/20	360	0,888	10	32
13	12/20	370	0,888	10	33
14	16/20	370	1,378	10	58
15	12/20	580	0,888	14	72
16	12/20	105	0,888	24	22
17	16	635	1,378	4	40
18	12/20	150	0,888	52	69
19	12/20	150	0,888	16	21
20	12	190	0,888	4	7
21	12	60	0,888	16	9
22	16	215	1,378	12	41
PISO TOTALE				Kg	1530

ARMATURA BAGGIOLI

PANTATA ZZ



Project information including: CONCESSIONI AUTOSTRADALI LOMBARDE, tangenziale esterna, TANGENZIALE EST ESTERNA DI MILANO, PROGETTO ESECUTIVO LOTTO C, and ARMATURA SPALLA "Z".

Professional stamps and signatures for the project, including the architect's name and the engineering firm's details.

NUMERO	DATA	REVISIONE	M. TIRIBI	M. VALLI	A. TOSCANI
C4129	01/05	01	IA	AR	002
PROGETTO	VERBA	ES	CA	AR	002
ES	CA	AR	002	A	154