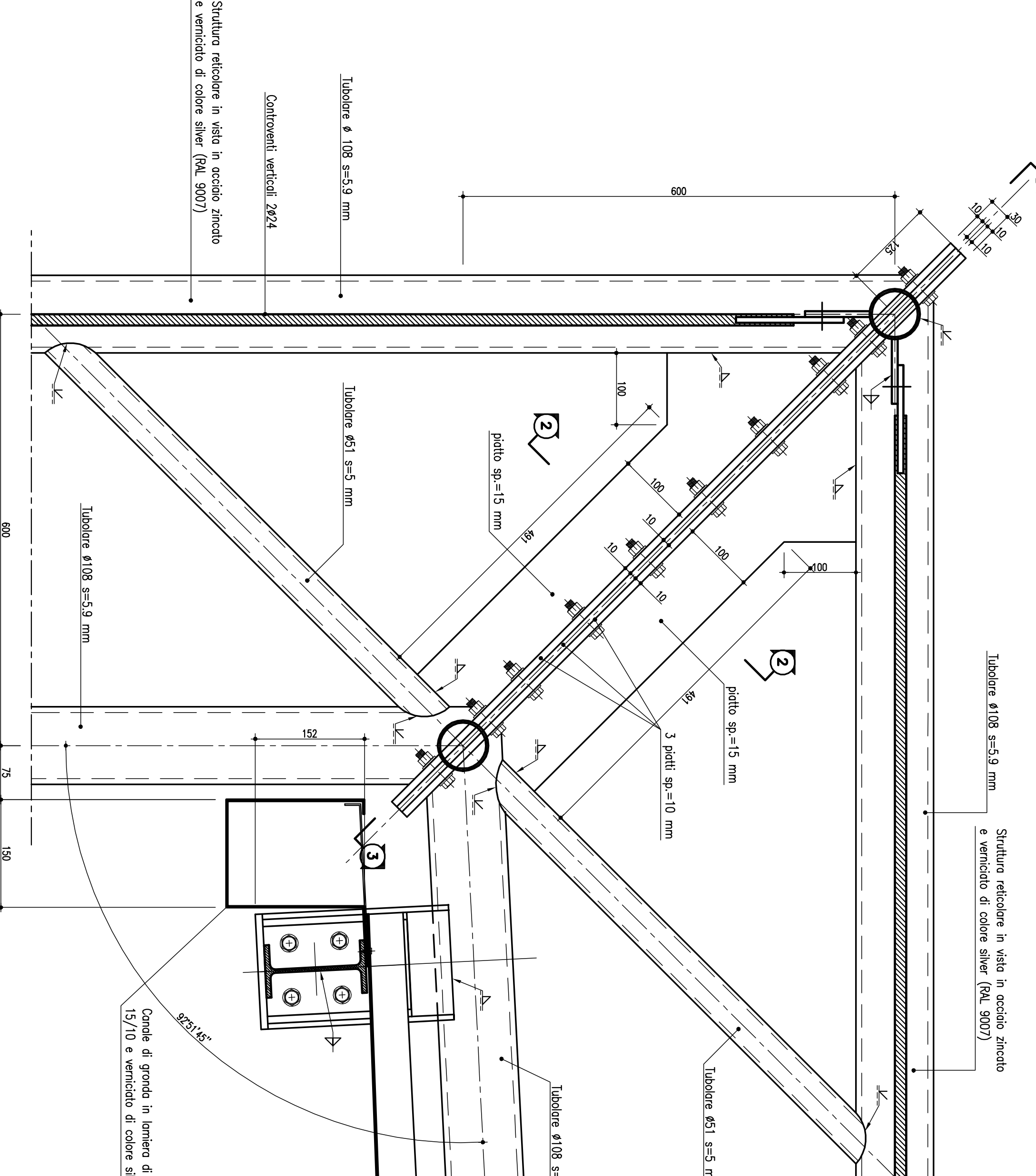


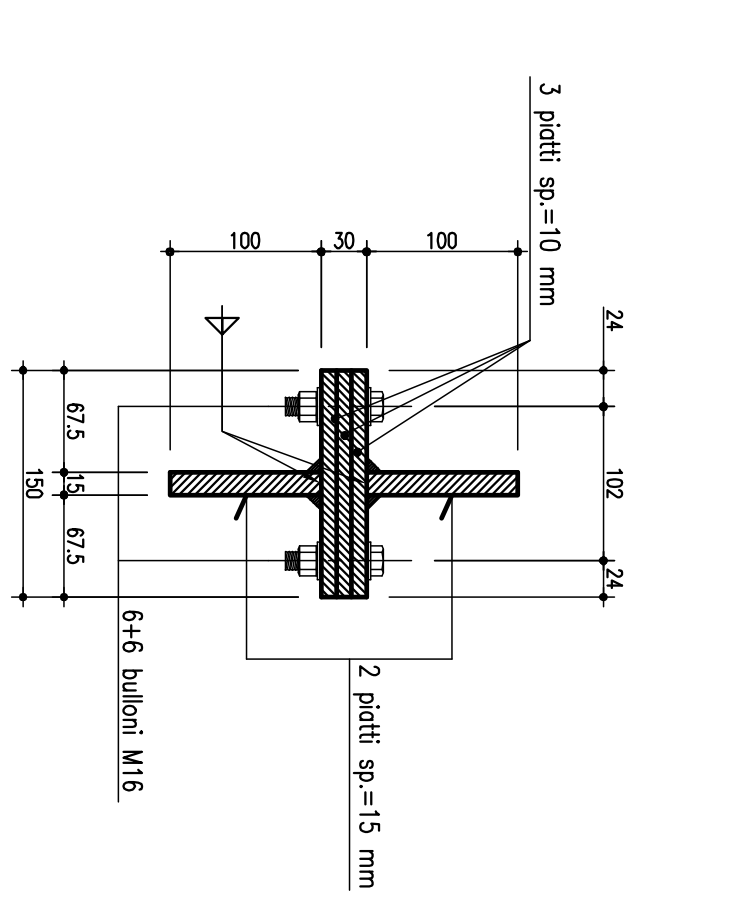
PARTICOLARE "B"

Risposta 115



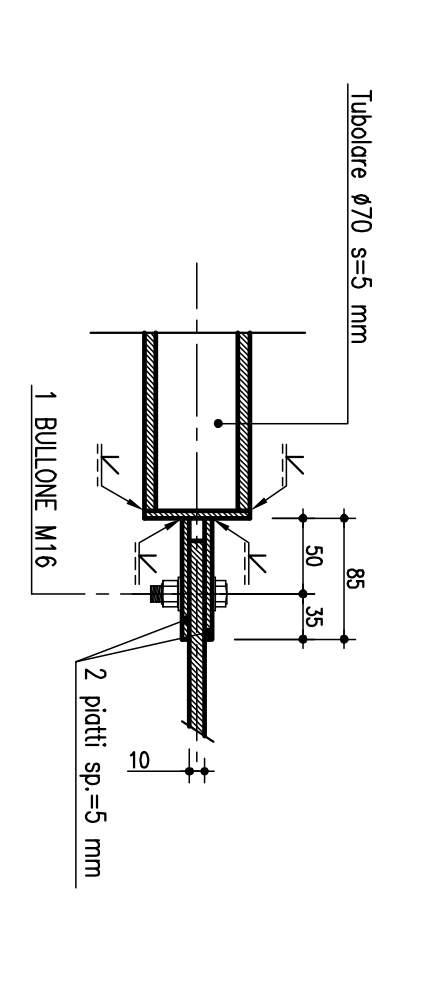
SEZIONE 2-2

Risposta 115



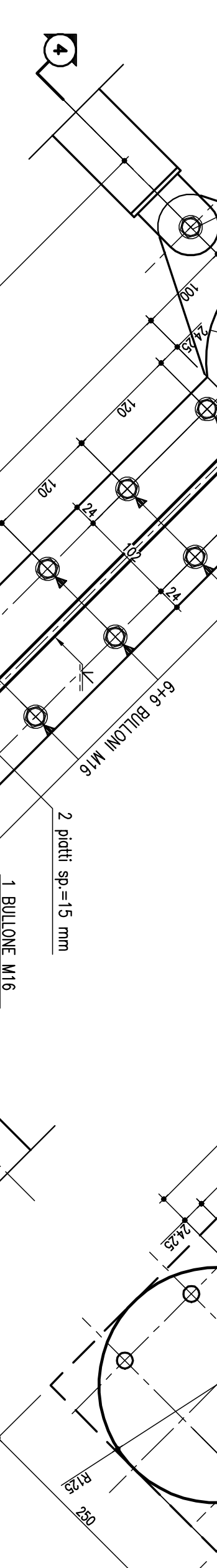
SEZIONE 4

Risposta 115



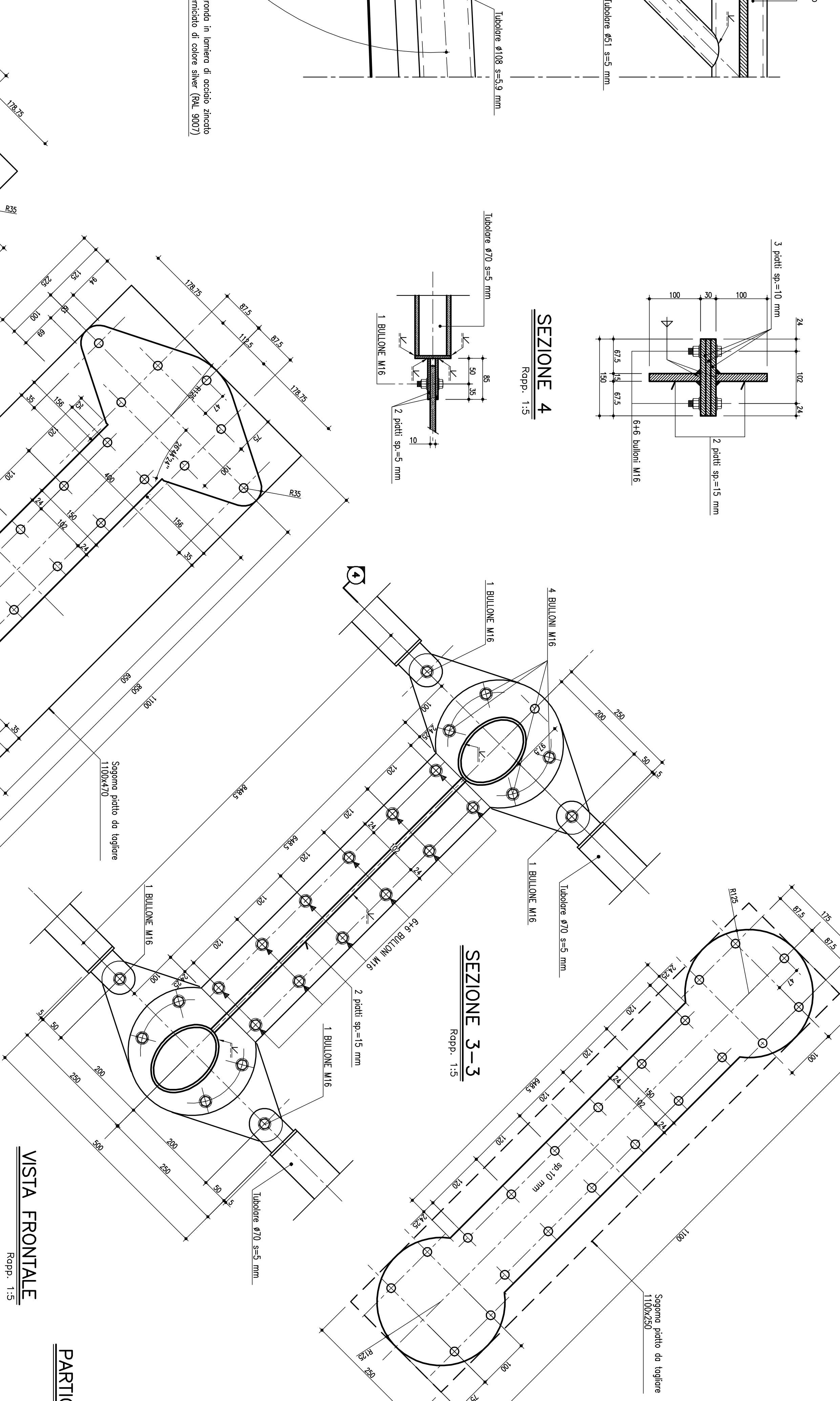
SEZIONE 3-3

Risposta 115



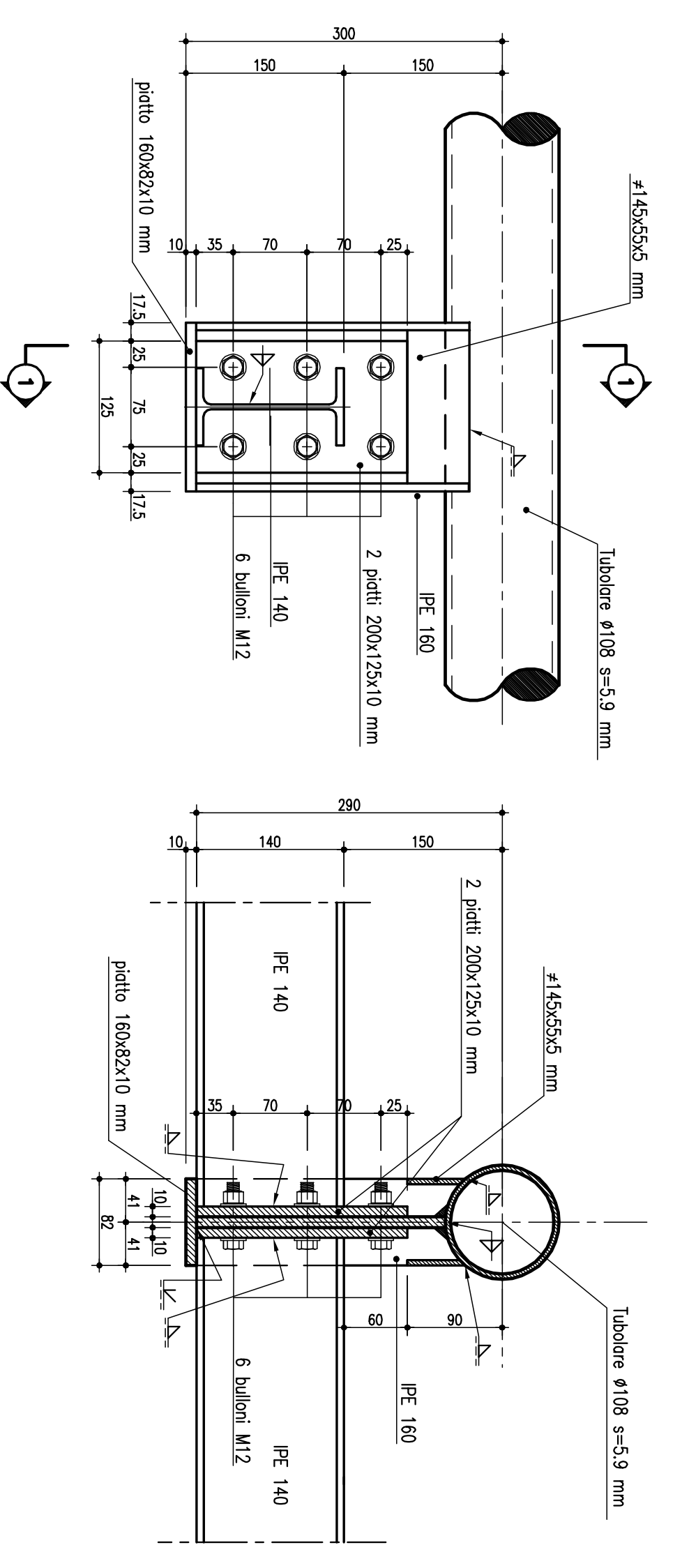
PARTICOLARE "C"

Risposta 115



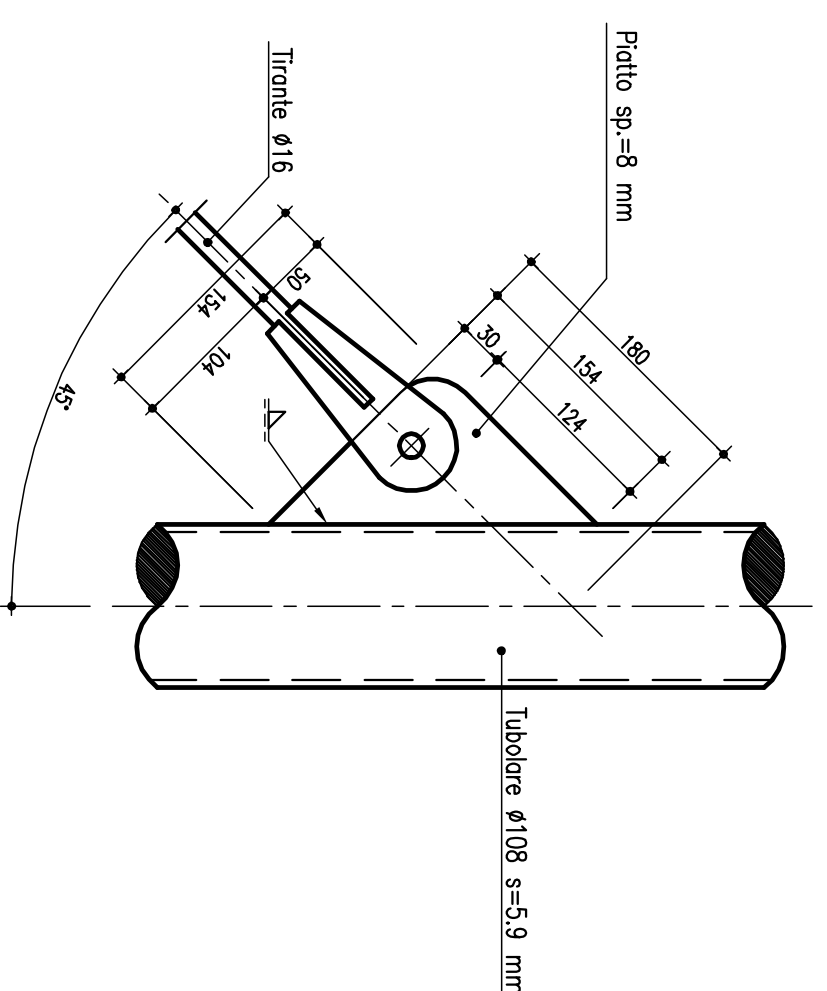
VISTA FRONTALE

Risposta 115



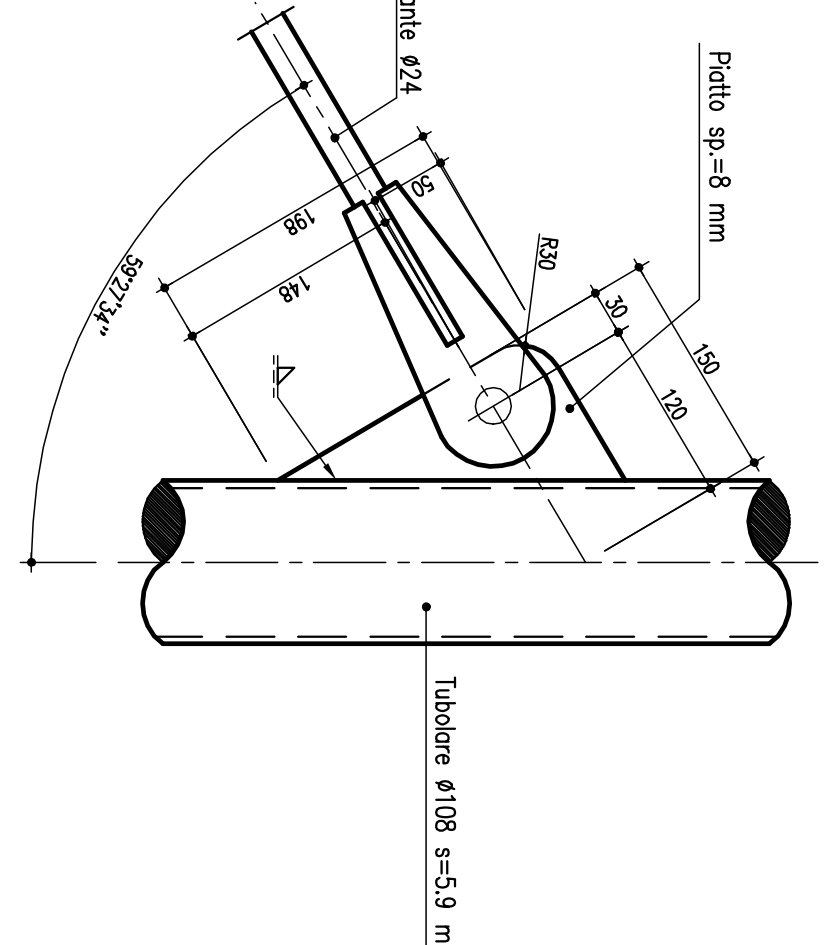
PART. ATTACCO TIRANTE Ø16

(ORIZZONTALE) Risposta 115



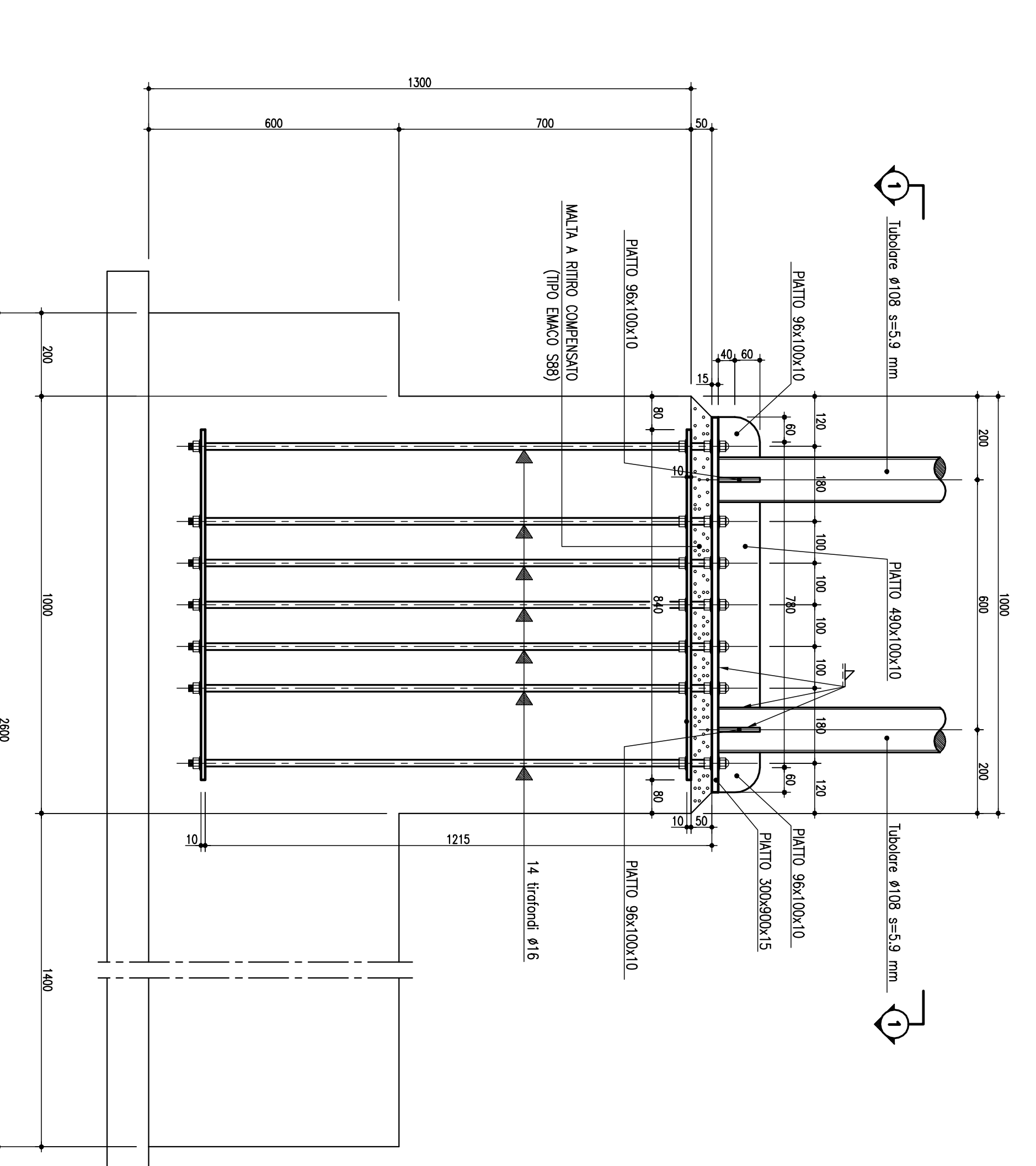
PART. ATTACCO TIRANTE Ø24

(VERTICALE) Risposta 115



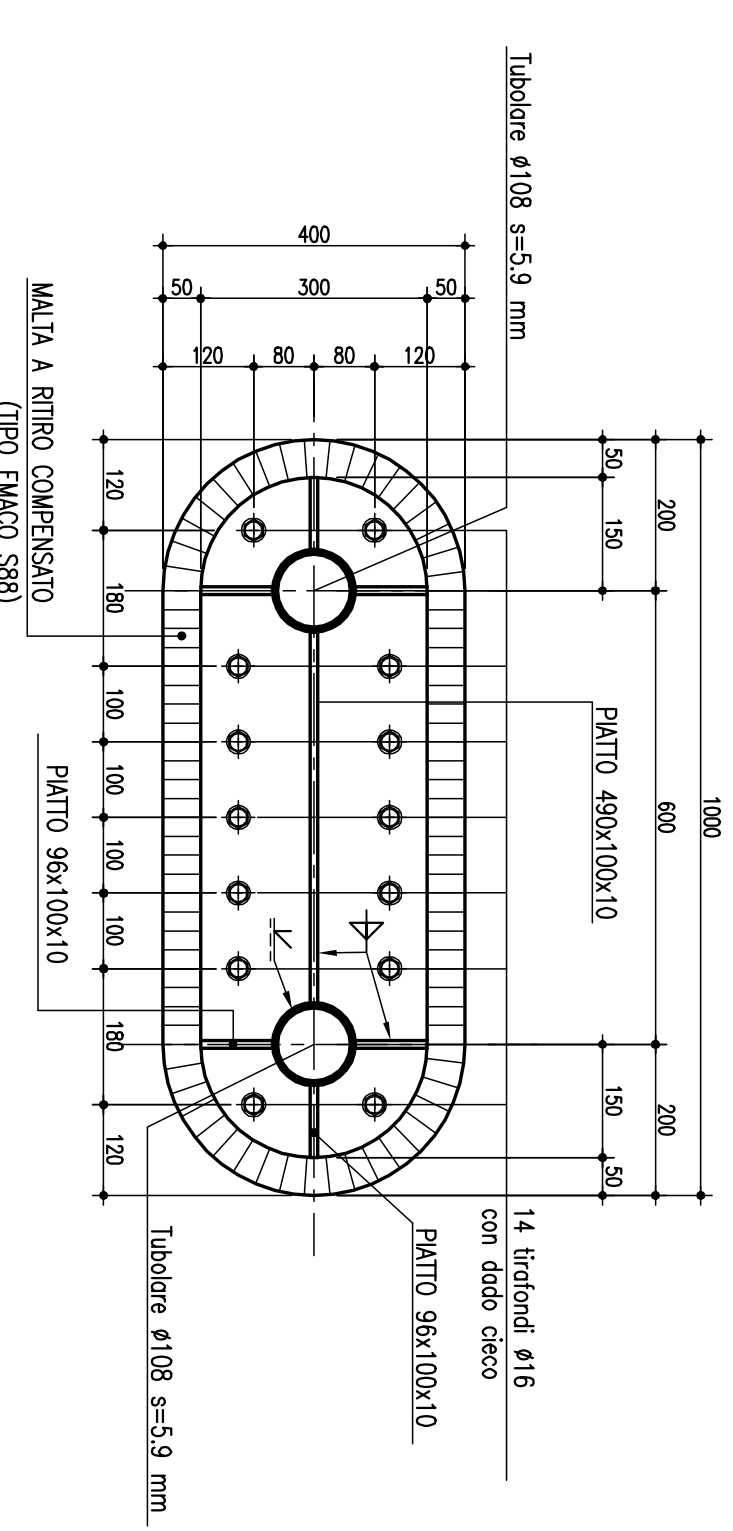
PARTICOLARE "A"

Risposta 1170



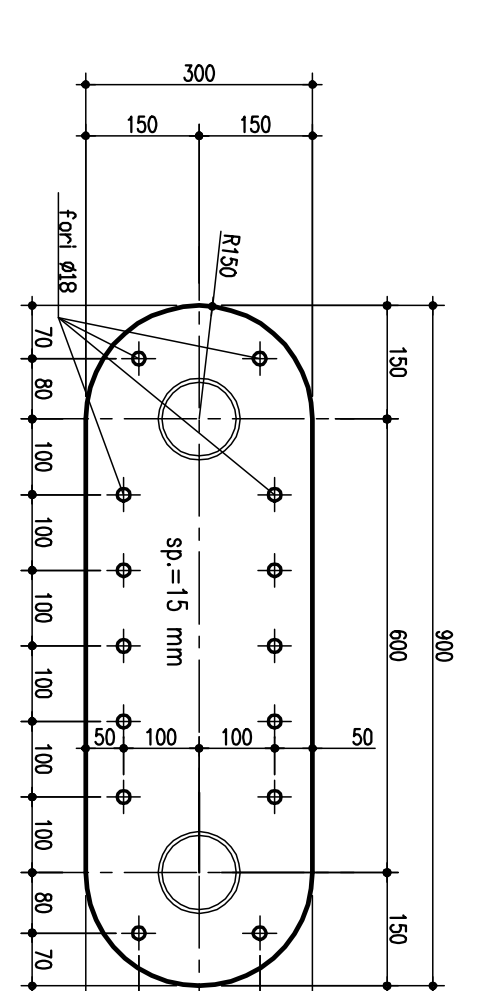
SEZIONE 1-1

Risposta 1170



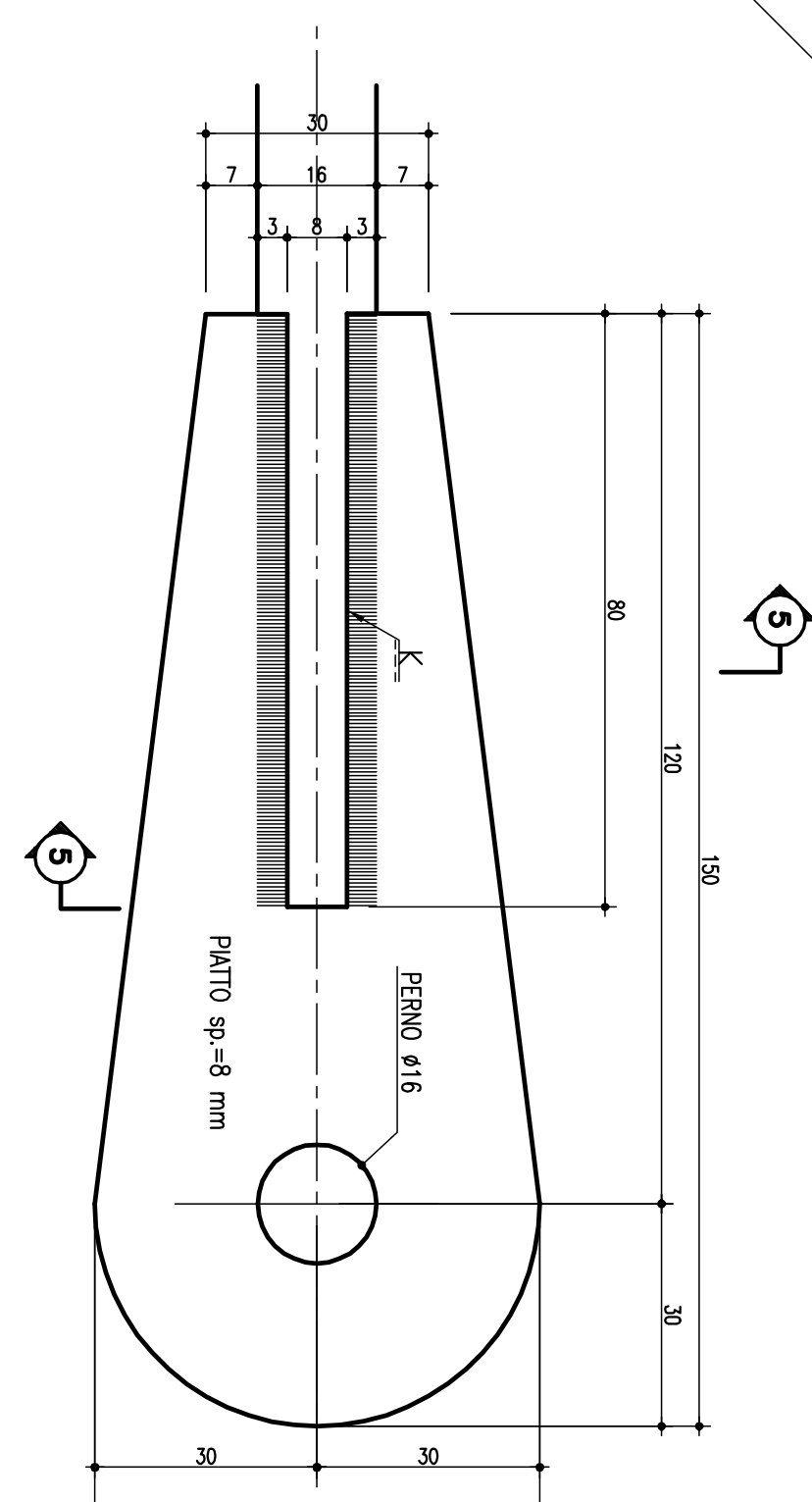
PIATTO 900x300x15

Risposta 1170



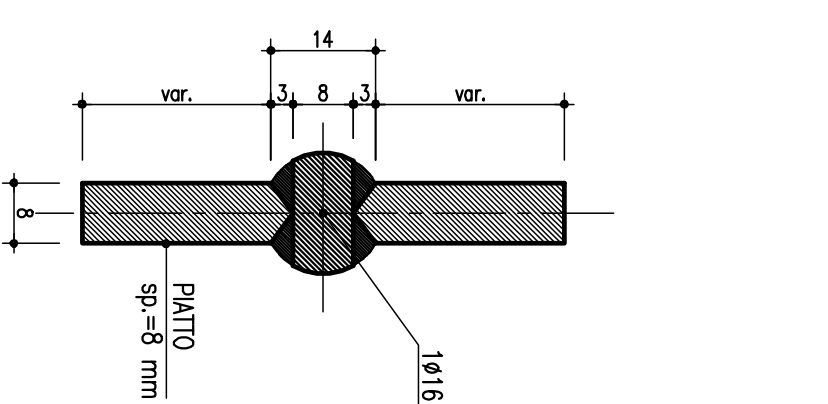
GOCCIA PER TIRANTE Ø16

Risposta 111



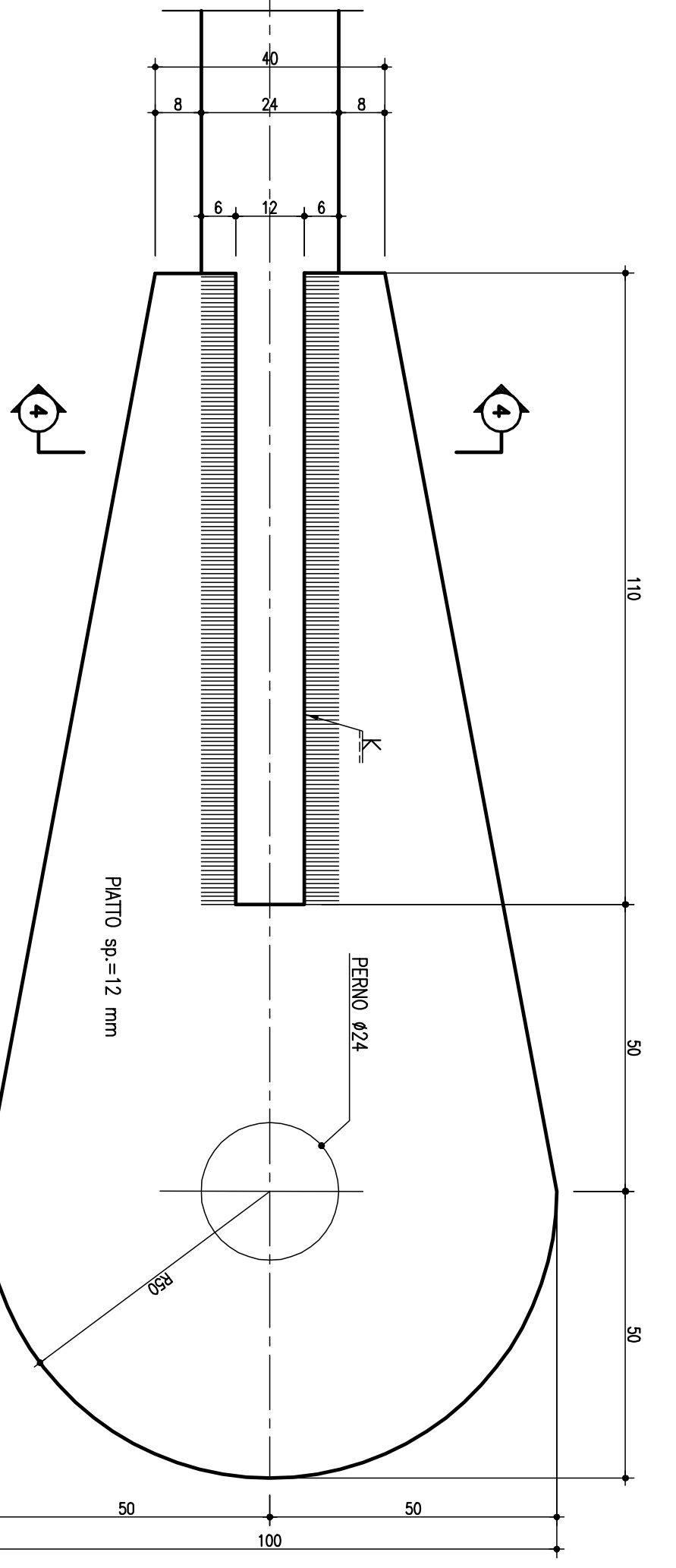
SEZIONE 5-5

Risposta 111



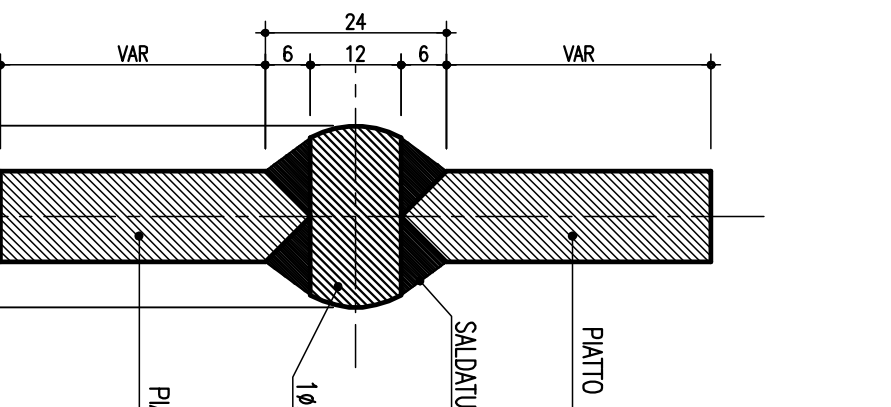
GOCCIA PER TIRANTE Ø24

Risposta 111

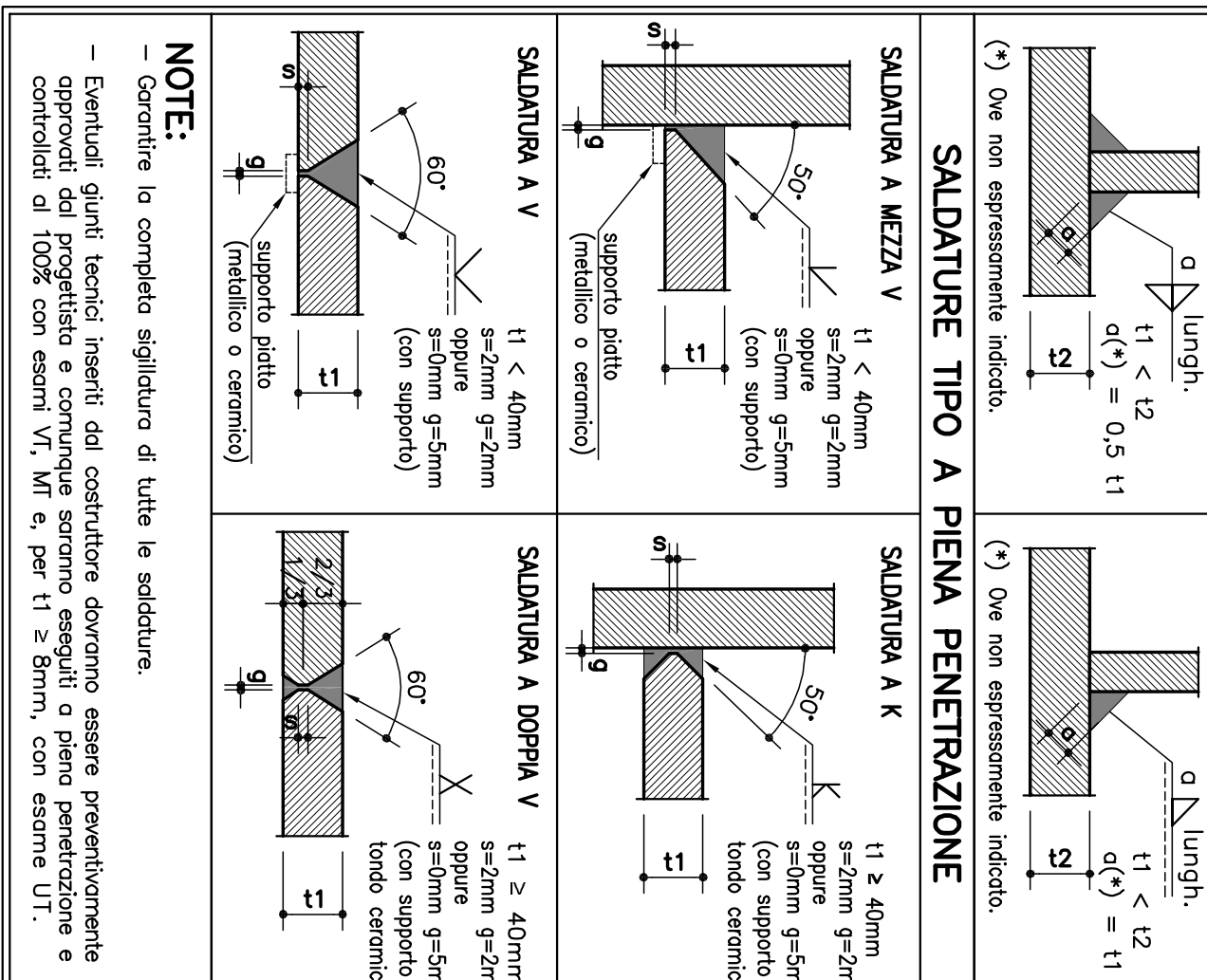


SEZIONE 4-4

Risposta 111

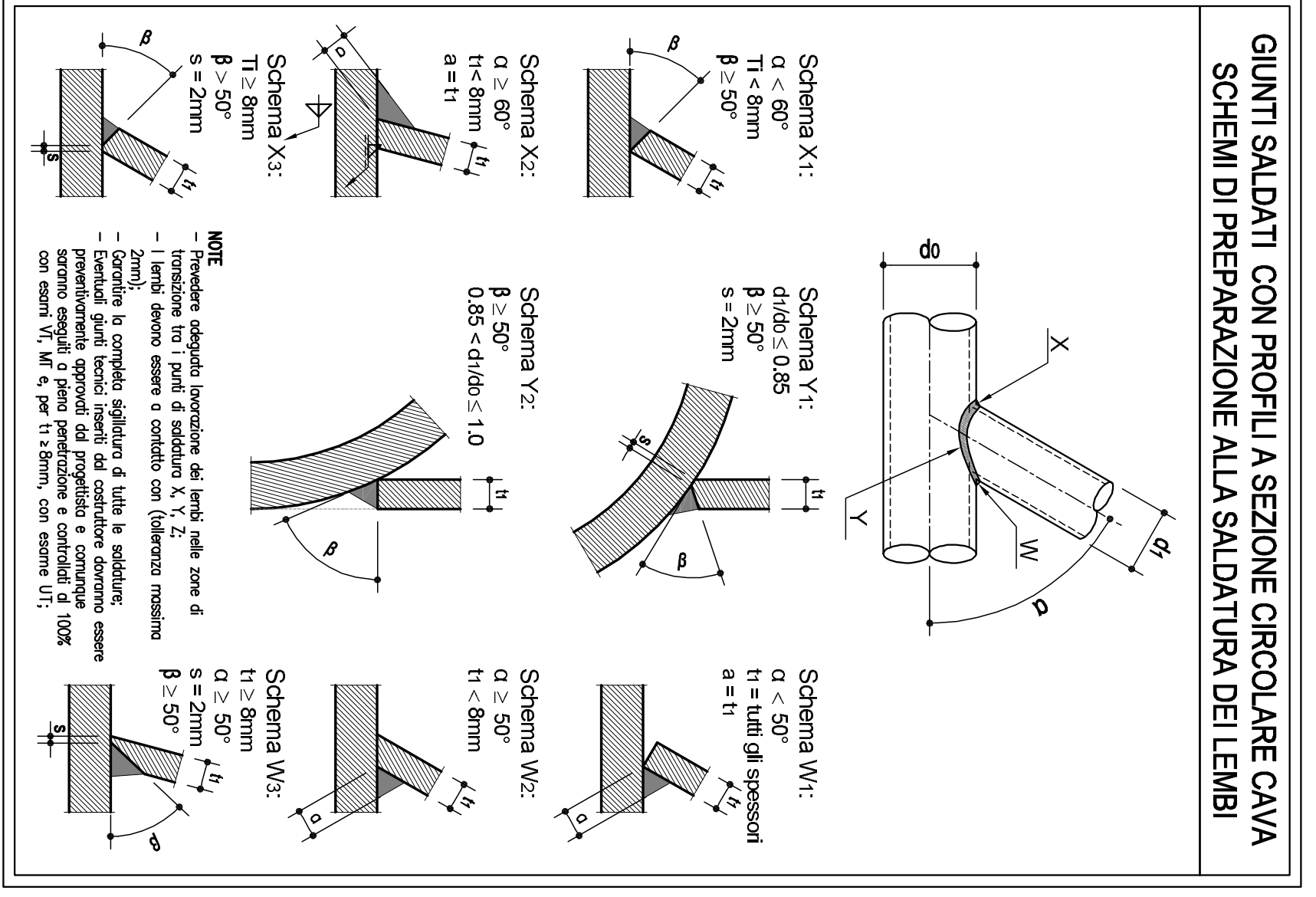


NOTE GENERALI - TUTTE LE DIMENSIONI SONO ESPRESSE IN CENTIMETRI TRANNE DOVE ESPRESSAMENTE...



NOTE - Garantire il completo agguancio di tutte le saldature. - Evitare ogni tipo di sovrapposizione...

Table with 2 columns: 'MATERIE' and 'BILUONE E TIRAPORTE'. It lists materials like 'ACCIAIO PER CARPENTERIA METALLICA' and 'BILUONE PER ACCESSORI METALLICI' along with their specifications and standards.



Project information block for 'autostrade // per l'Italia'. It includes the project name 'AUTOSTRADA (A14) : BOLOGNA-BARI-TARANTO', the location 'AMPLIAMENTO ALLA TERZA CORSA DEL TRATTO RIMINI NORD-PEDASO', and details about the contractor 'CARPENTERIA METALLICA PARTICOLARI COSTRUTTIVI' and the manufacturer 'SPESA'.