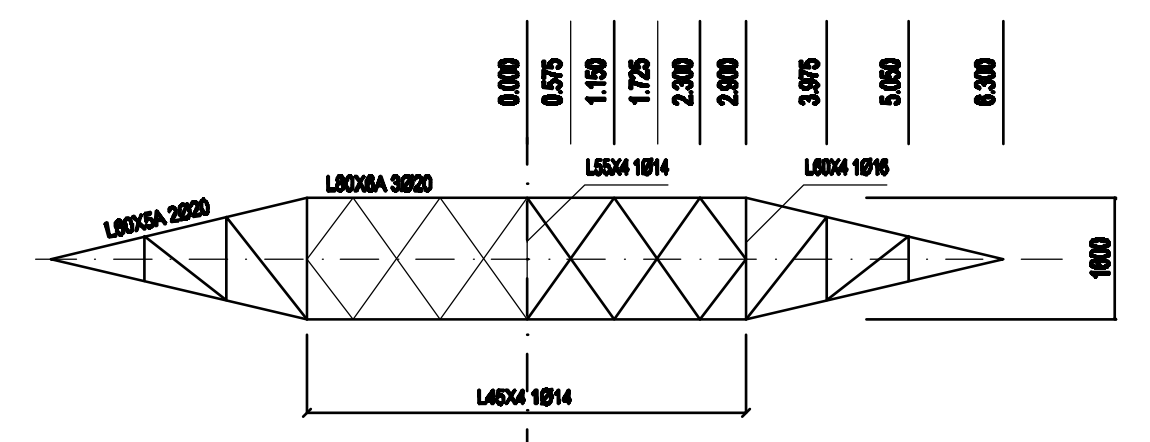
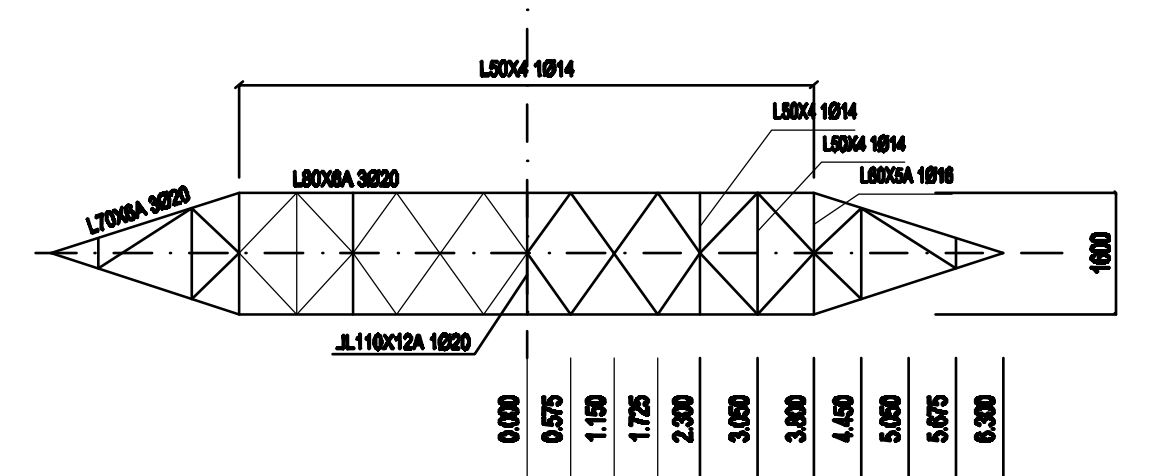


Tipo	Trave	Tronchi				Base	Piedi					Monconi			
		I	II	III	IV		-2	-1	±0	+1	+2		+3		
VY15	Y882	Y883	Y886			2P686	2P700	2P700	2P700	2P700	2P700	2P700	2P700	2P700	LF48/285
VY18	Y882	Y883	Y886			2P691	2P701	2P701	2P701	2P701	2P701	2P701	2P701	2P701	LF48/285
VY21	Y882	Y883	Y886			2P686	2P700	2P700	2P700	2P700	2P700	2P700	2P700	2P700	LF48/285
VY24	Y882	Y883	Y886	2P687		2P686	2P700	2P700	2P700	2P700	2P700	2P700	2P700	2P700	LF48/285
VY27	Y882	Y883	Y886	2P687	2P688	2P686	2P700	2P700	2P700	2P700	2P700	2P700	2P700	2P700	LF48/285
VY30	Y882	Y883	Y886	2P687	2P688	2P686	2P700	2P700	2P700	2P700	2P700	2P700	2P700	2P700	LF48/285
VY33	Y882	Y883	Y886	2P687	2P688	2P686	2P700	2P700	2P700	2P700	2P700	2P700	2P700	2P700	LF48/285
VY36	Y882	Y883	Y886	2P687	2P688	2P686	2P687	2P687	2P687	2P687	2P687	2P687	2P687	2P687	LF48/285

Faccia superiore

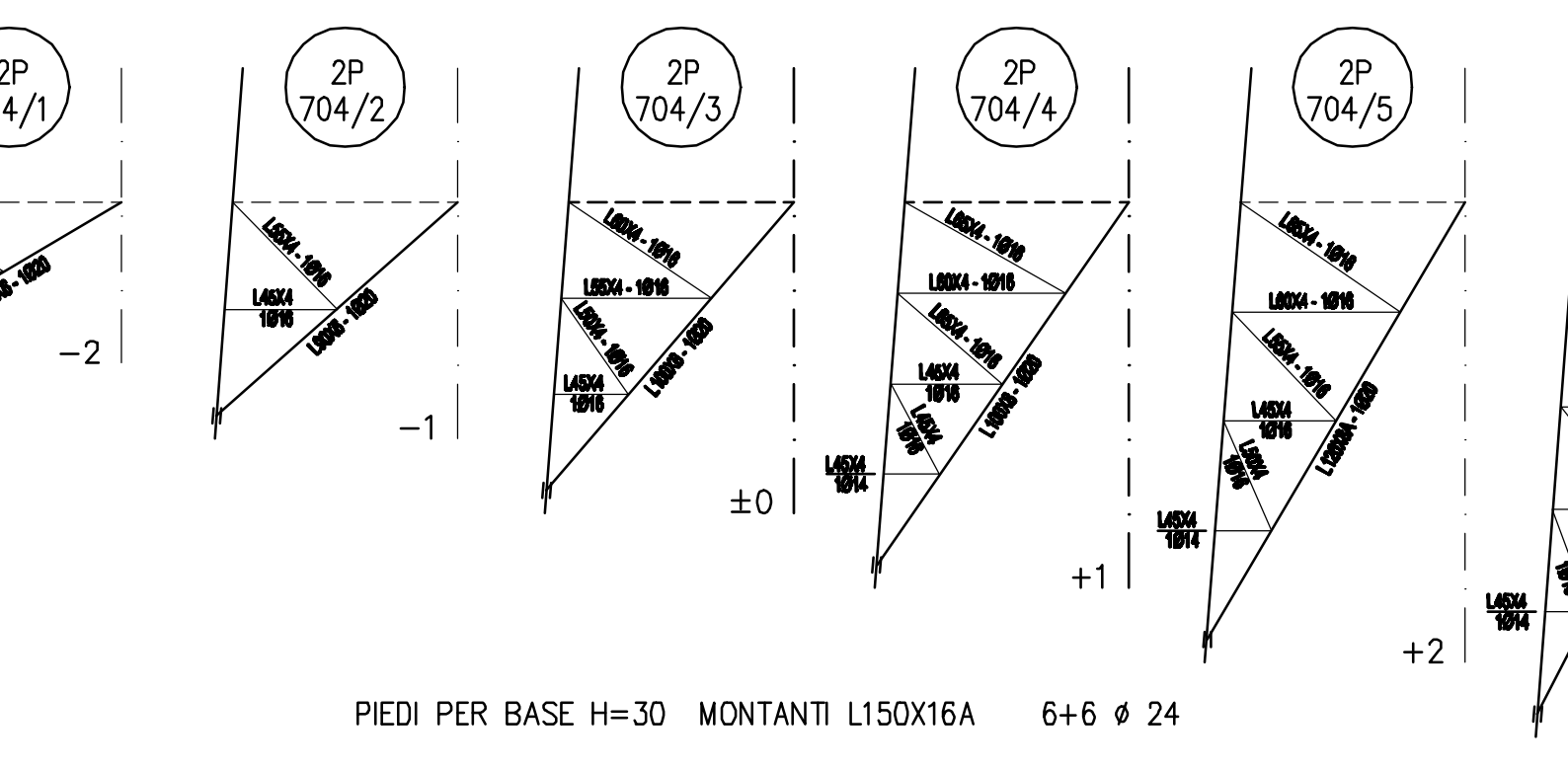
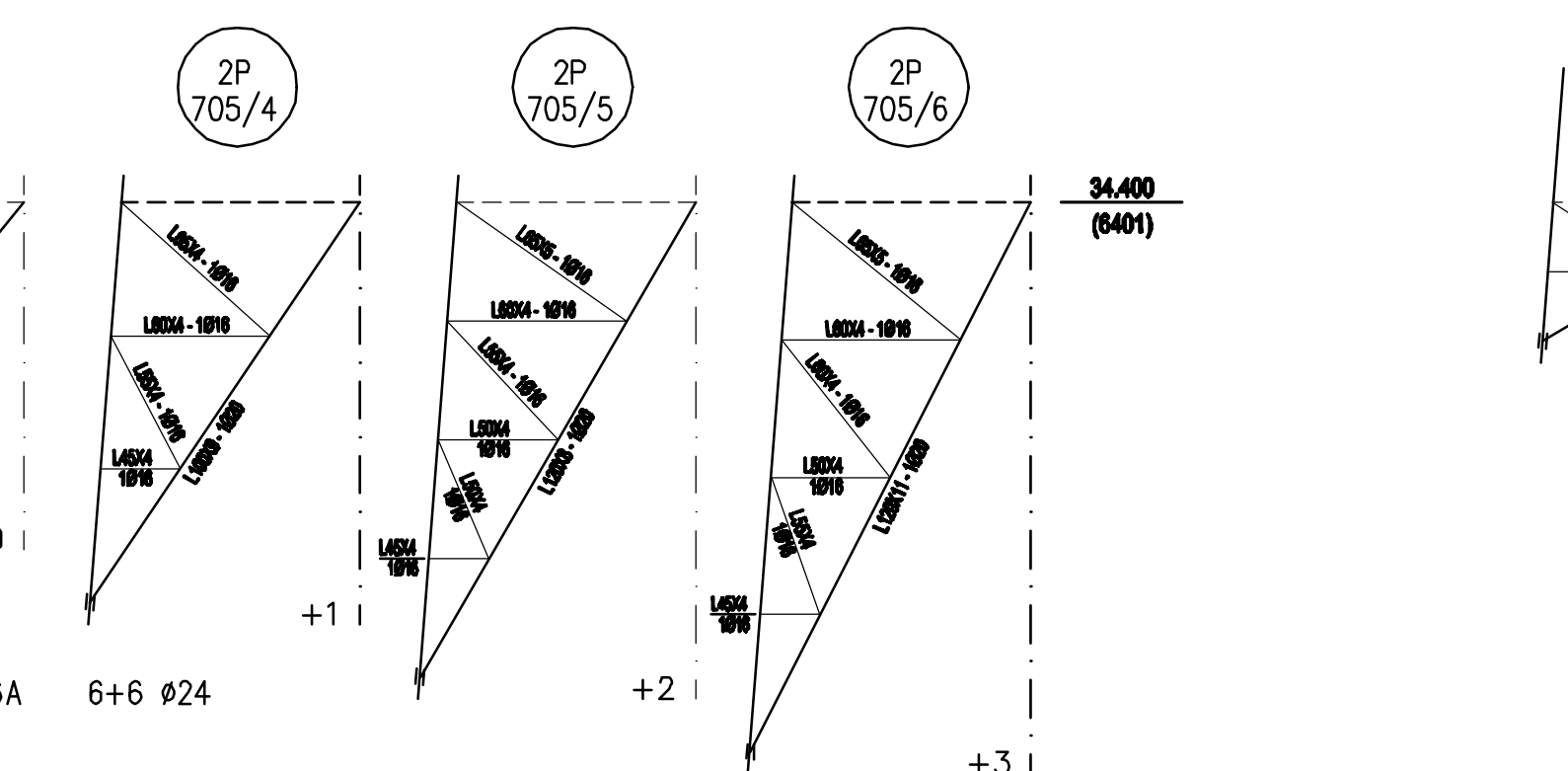
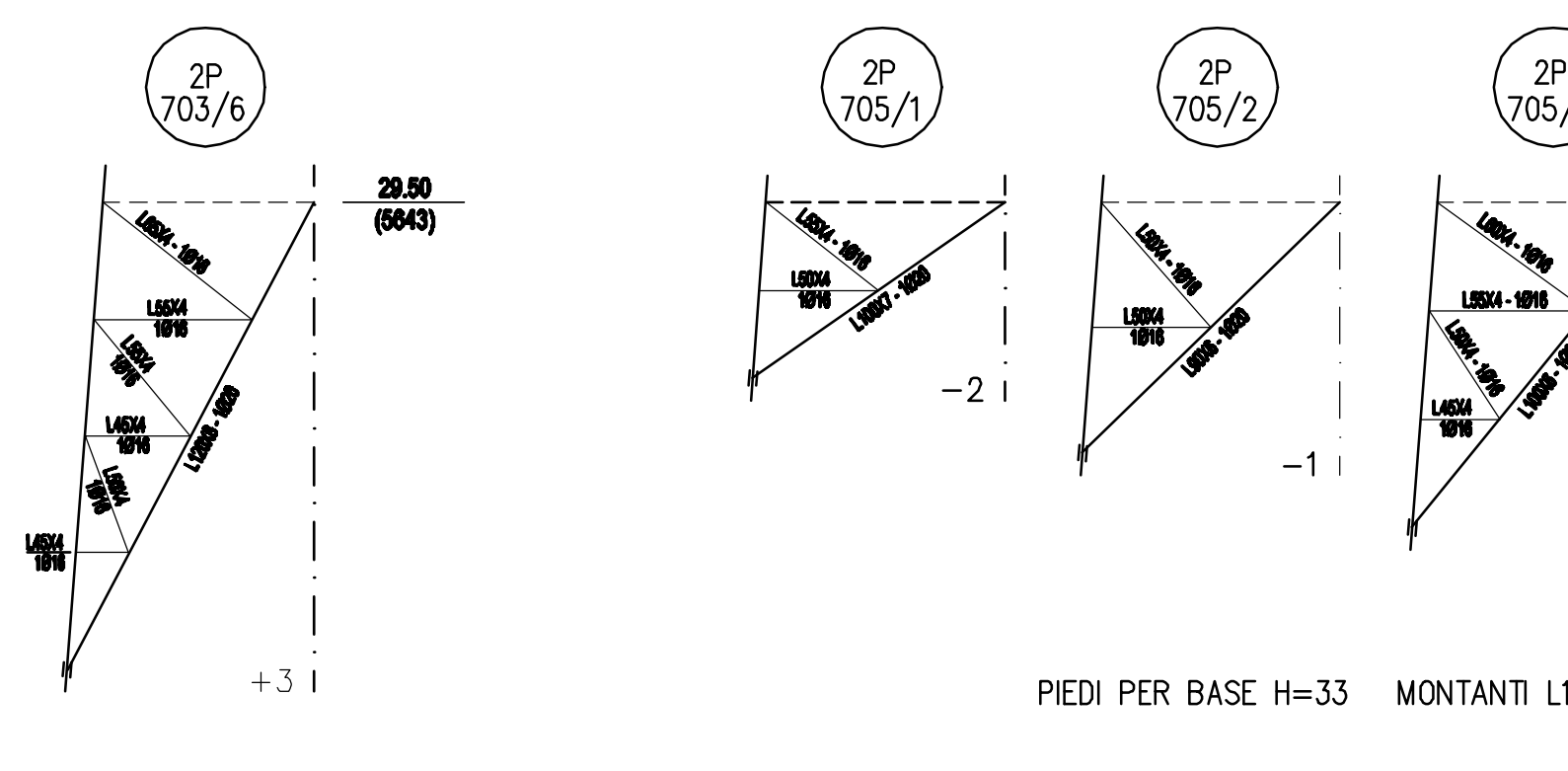
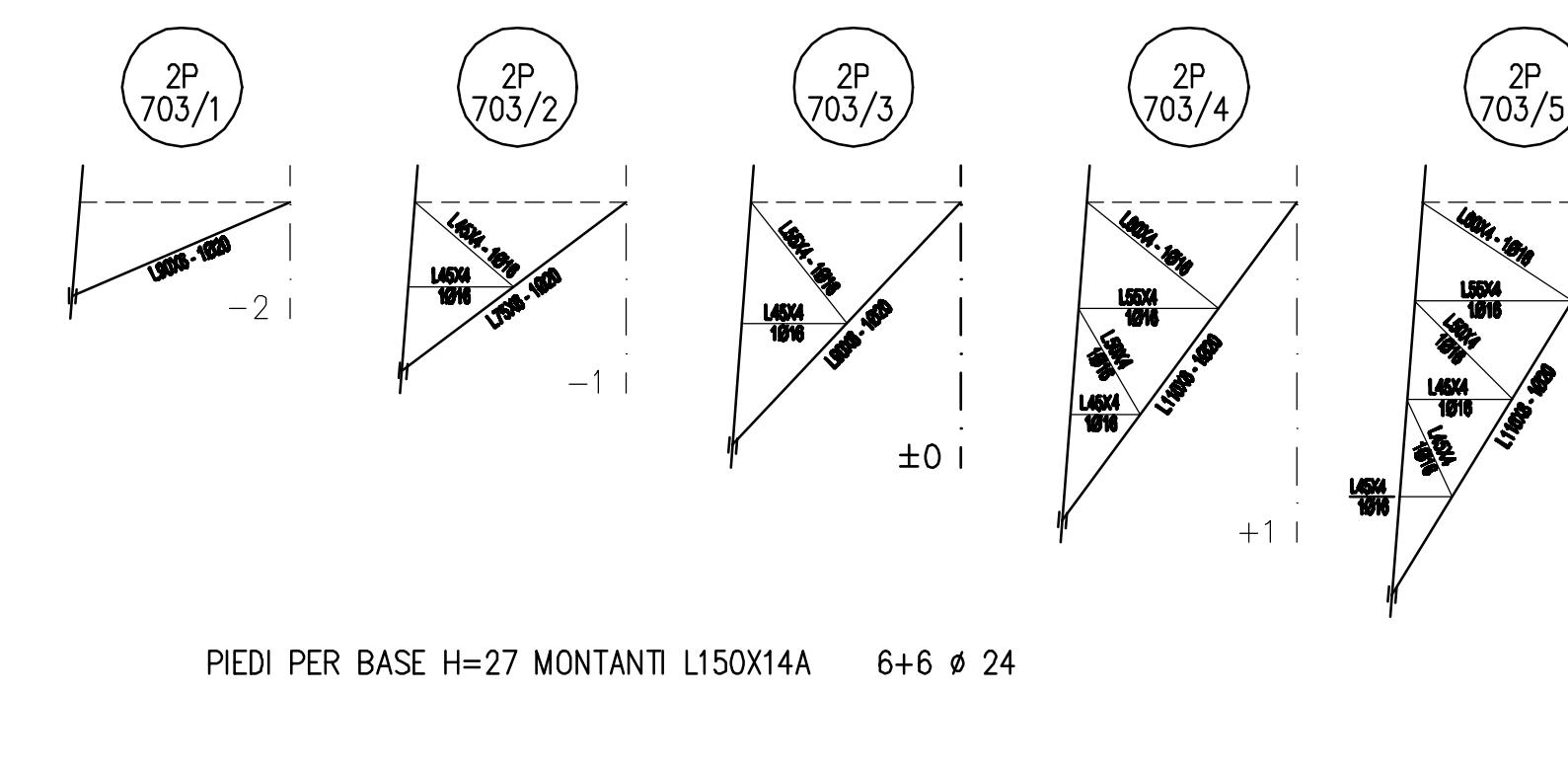
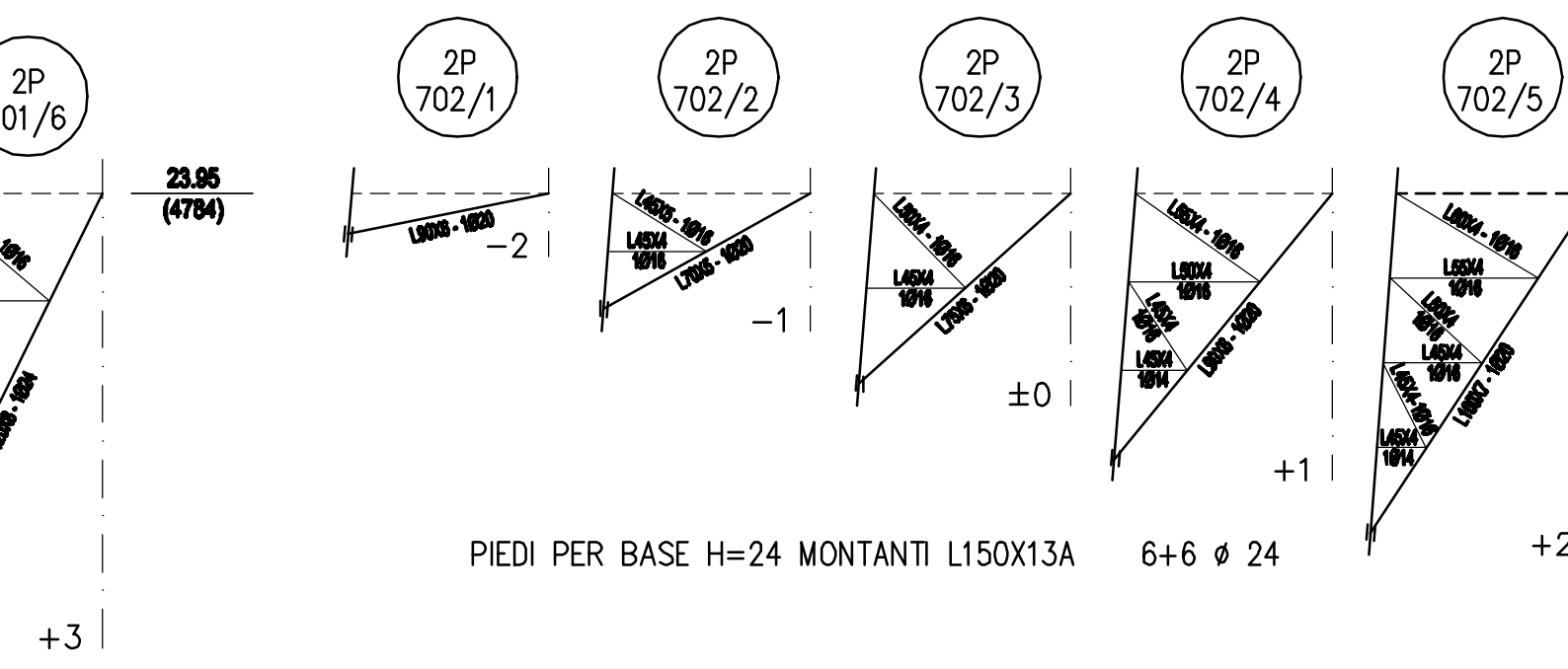
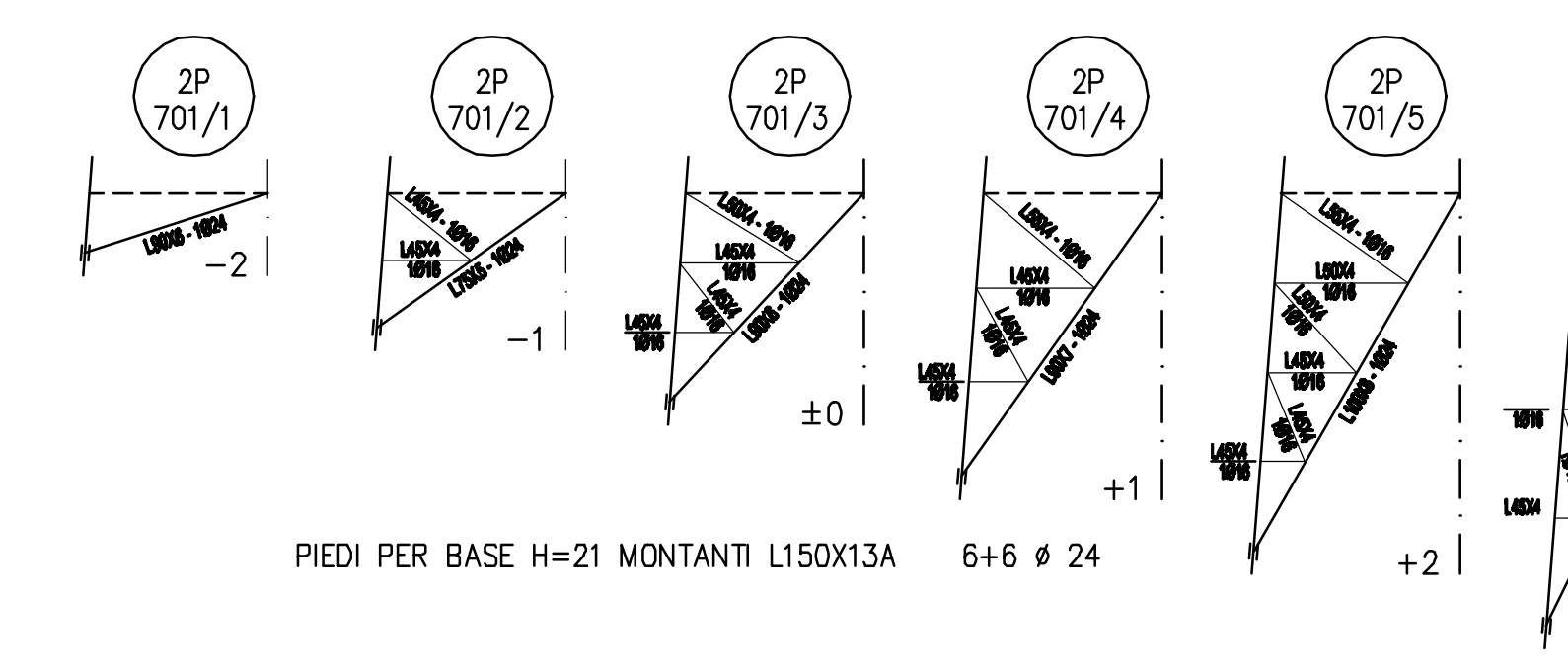
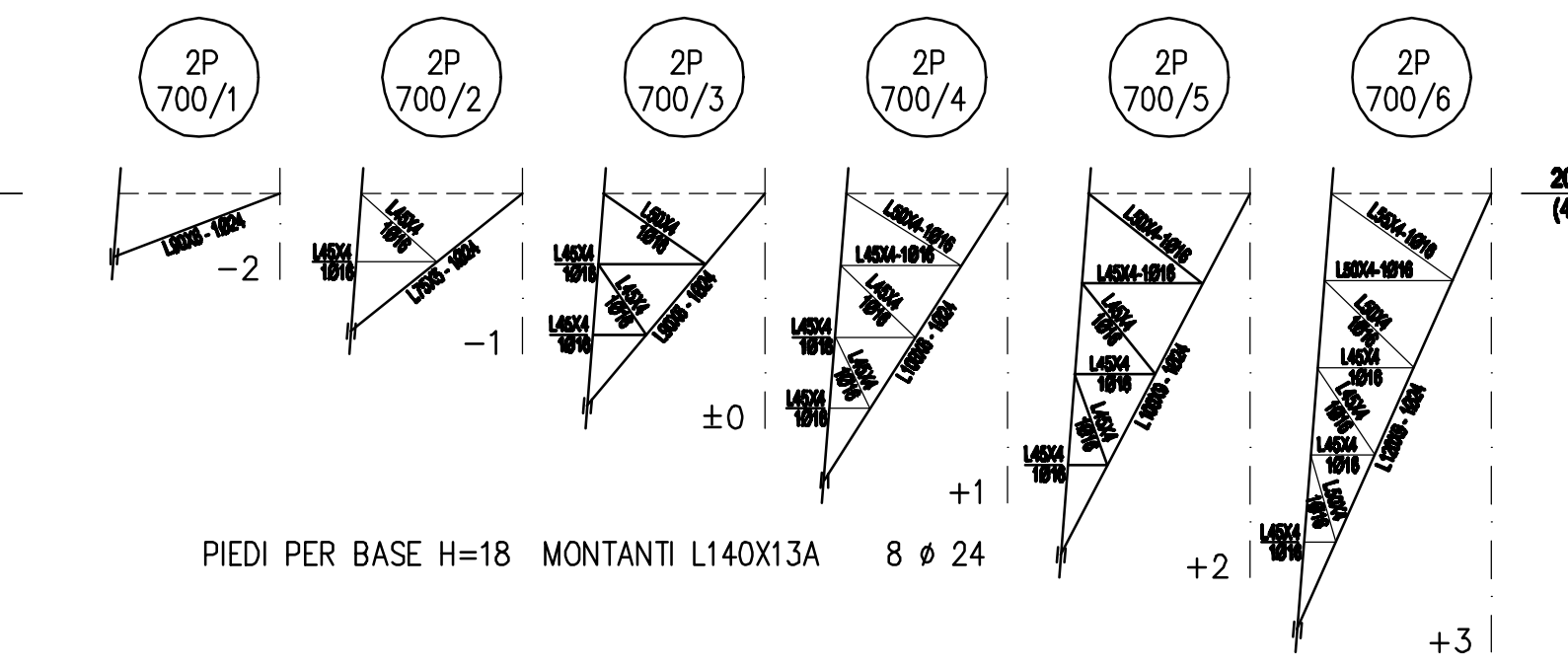
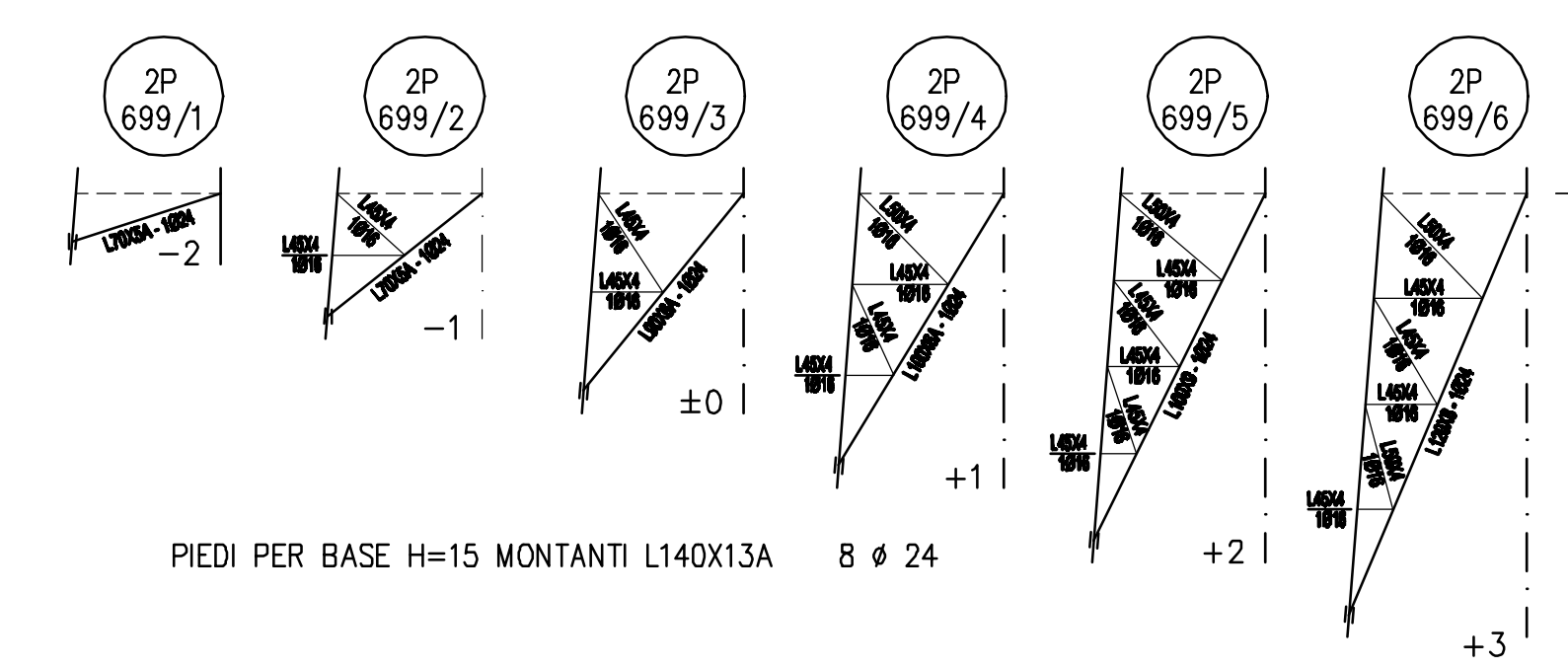
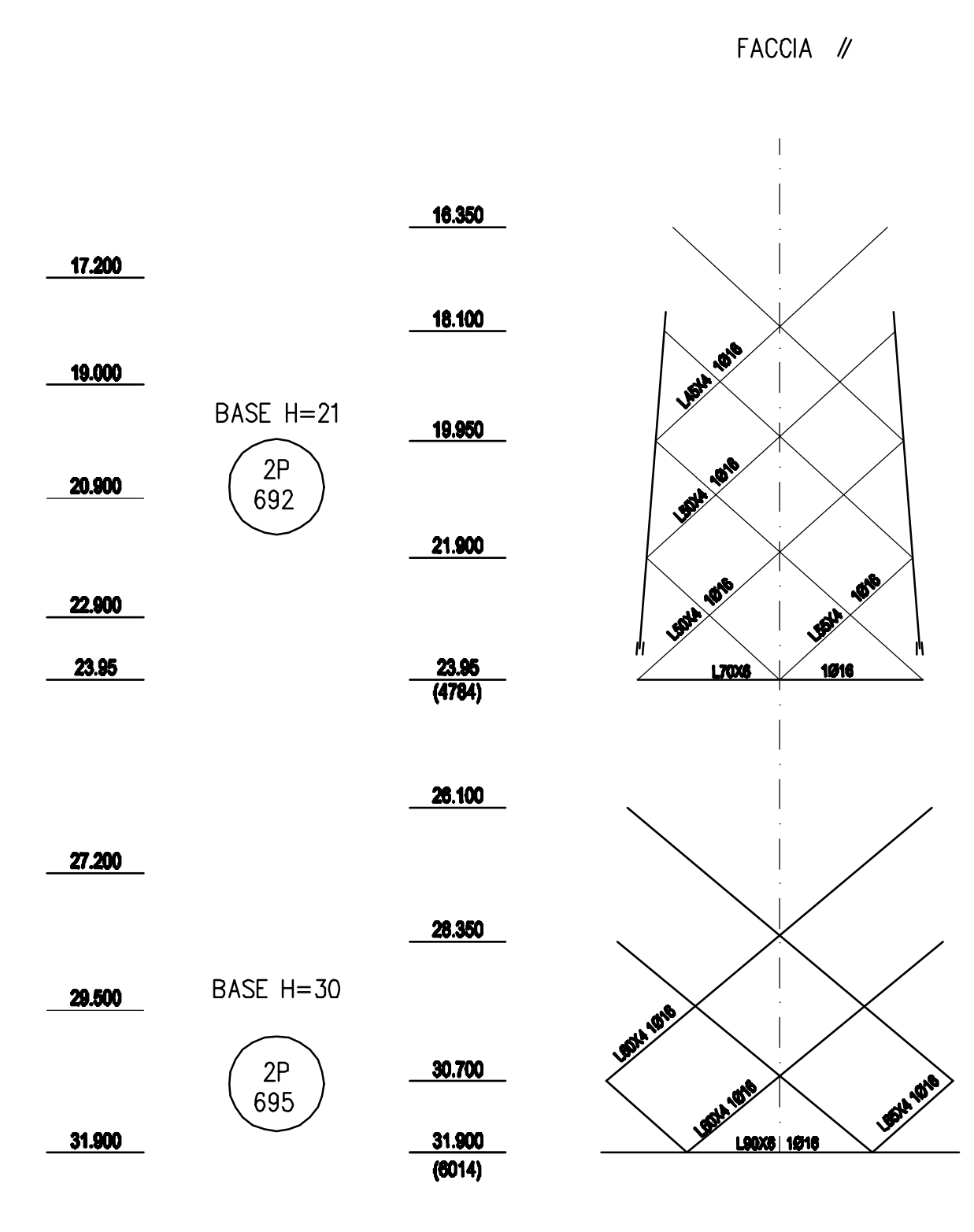
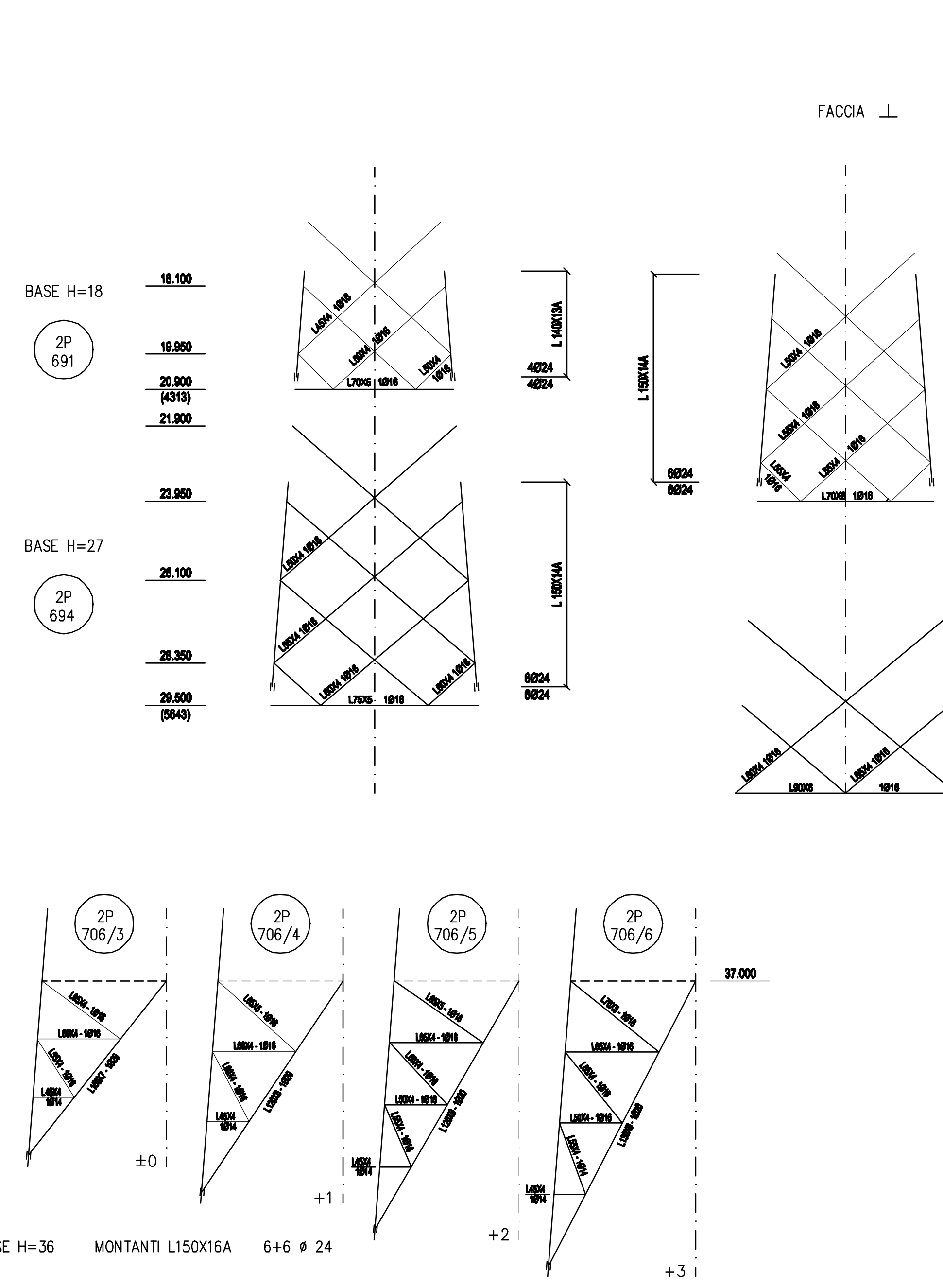
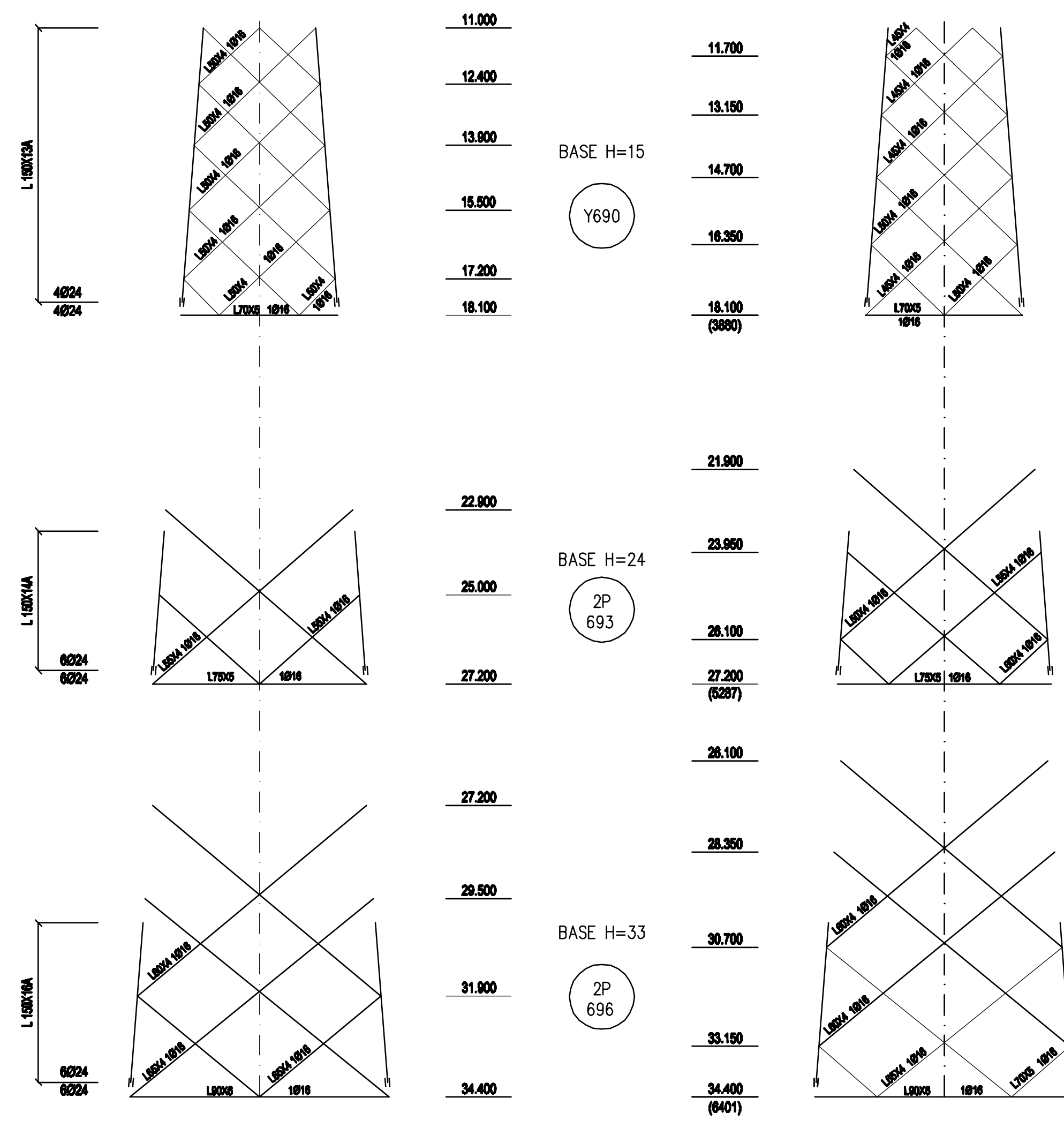
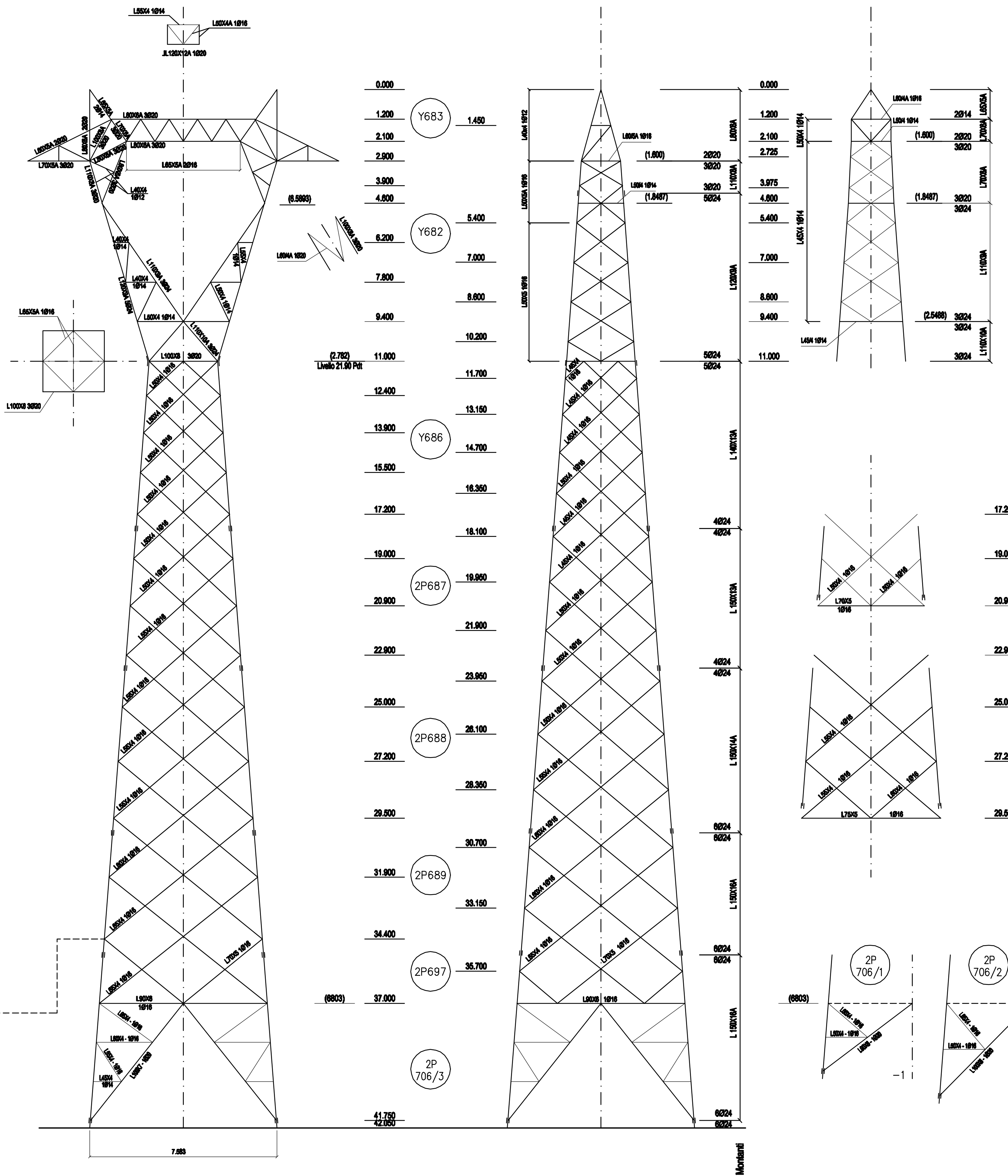


Faccia inferiore



Faccia interna

Faccia esterna



NOTE:
 1. PROFILATI:
 CON INDICAZIONE SEGUITA DA LETTERA A: S355JR
 CON INDICAZIONE SENZA LETTERA A: S235JR
 ROMPRESSIONE IMPRECISATI LAD40X4 1012
 2. BULLONI SENZA ALCUNA INDICAZIONE CLASSE 6.8 UNI EN 20898
 3. DISEGNI COSTRUTTIVI DI RIFERIMENTO:
 Per la base:
 Per il primo tronco:
 Per il tronco, base e piedi (escluso UT tipo P doppia terra):
 Terna P028DP000 (escluso 1° e 2° tronco)
 Terna P028DP010 + P028DP030
 n.b. Le quote nei disegni vanno ridotte di 10,90mm

REVISIONI		TIPOLOGIA DELL'ELABORATO		COPICIA DELL'ELABORATO	
N.	DATA	DESCRIZIONE	ELABORATO	VERIFICATO	APPROVATO
NOME DEL FILE		SCALA CAD	FORMATO	SCALA	FOLIO
VY220V_Pd_Bas		1 unità = 1	1180x891	1:100	1 / 1
DISEGNO SCHEMATICO		M E 22000A0 O CX 12201		Terna	
PROGETTO		LINEE 220KV SEMPLICE TERNA A DELTA			
RICEVUTO DAL DOC. TERNA		SOSTEGNO TIPO VY			
CLASSIFICAZIONE DI SICUREZZA					