

rapporto completo dei rilevamenti fonometrici Ante Operam
allegato alla
Valutazione Previsionale di Impatto Acustico

Centrale Termoelettrica a Carbone da 1320 MWe di Saline di Montebello Jonico (RC)

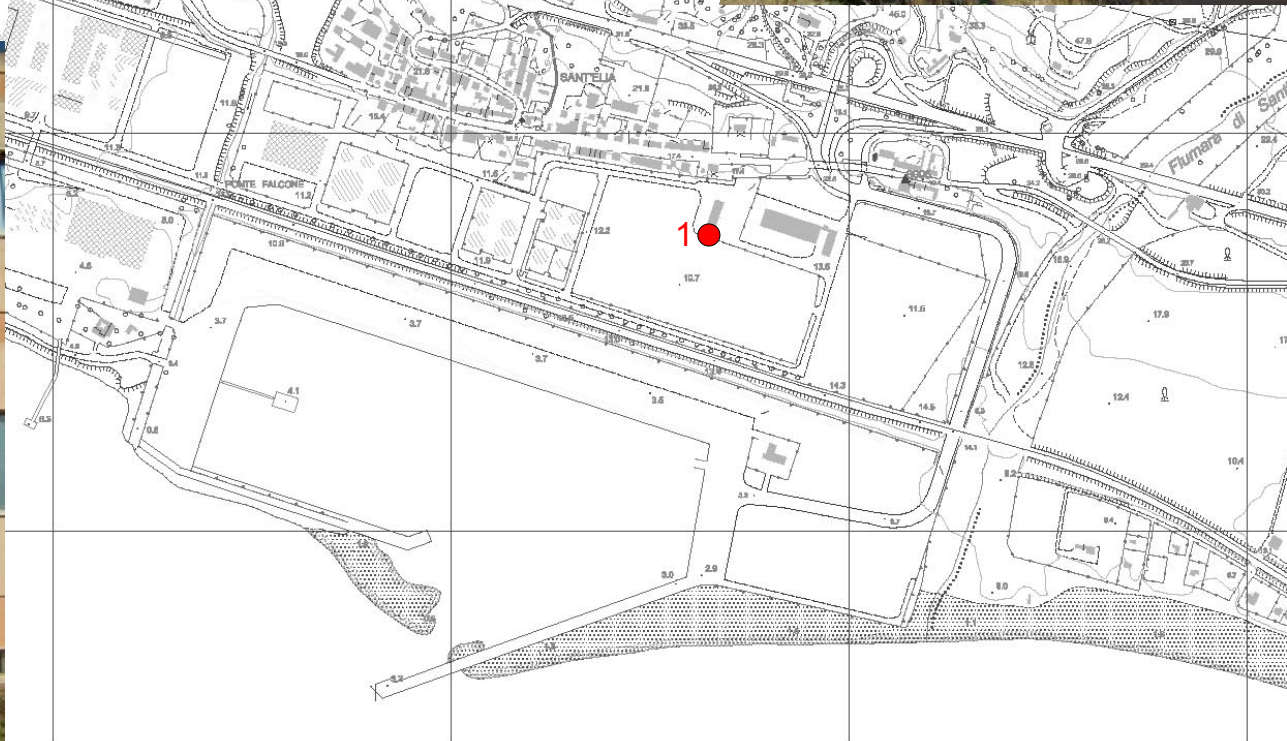
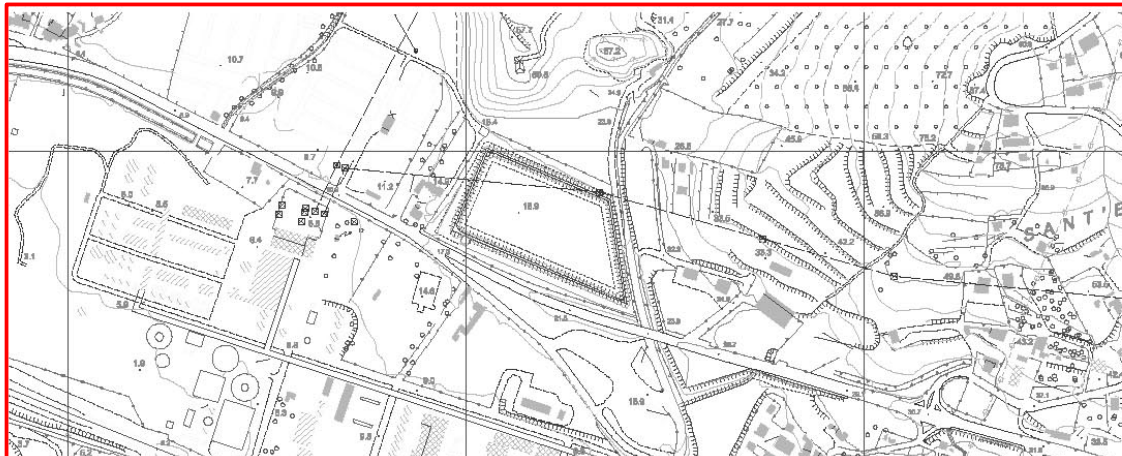
rilievi fonometrici ANTE OPERAM

ID	coordinate		1^ misura diurna								2^ misura diurna								misura notturna							
	E	N	data	ora	Tm	T	U.R.	Vmed	LAeq	LAF95	data	ora	Tm	T	U.R.	Vmed	LAeq	LAF95	data	ora	Tm	T	U.R.	Vmed	LAeq	LAF95
1	15° 44' 15"	37° 55' 50"	05-giu-07	10.00.00	12 ore	26°	48%	2 m/s	55.1	39.6	06-giu-07	6.00.00	4 ore	25°	45%	3 m/s	53.3	38.3	05-giu-07	22.00.00	8 ore	19°	70%	3 m/s	48.9	38.1
2	15° 43' 56"	37° 55' 56"	05-giu-07	9.16.42	30 minuti	28°	44%	1 m/s	55.9	40.4	05-giu-07	14.28.35	30 minuti	25°	48%	3 m/s	58.7	46.8	05-giu-07	23.32.37	30 minuti	19°	77%	2 m/s	49.5	43.5
3	15° 44' 22"	37° 56' 06"	05-giu-07	9.55.33	30 minuti	26°	49%	1 m/s	48.2	42.0	05-giu-07	15.05.43	30 minuti	25°	46%	4 m/s	47.7	41.3	06-giu-07	0.59.32	30 minuti	18°	77%	3 m/s	44.5	38.4
4	15° 44' 07"	37° 56' 03"	05-giu-07	10.51.50	30 minuti	25°	51%	1 m/s	54.0	42.3	05-giu-07	17.08.17	30 minuti	26°	43%	3 m/s	52.7	44.8	06-giu-07	1.36.39	22 minuti	18°	67%	3 m/s	46.2	38.8
5	15° 44' 33"	37° 55' 58"	05-giu-07	16.31.41	30 minuti	26°	47%	2 m/s	52.8	44.6	06-giu-07	10.35.41	30 minuti	25°	41%	3 m/s	52.9	43.4	06-giu-07	0.19.37	30 minuti	19°	70%	3 m/s	44.9	33.9



postazione di misura 1

destinazione d'uso da PRG interno al perimetro ASI

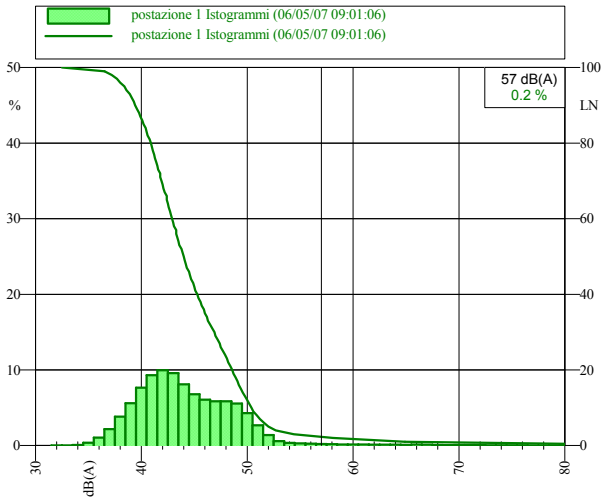
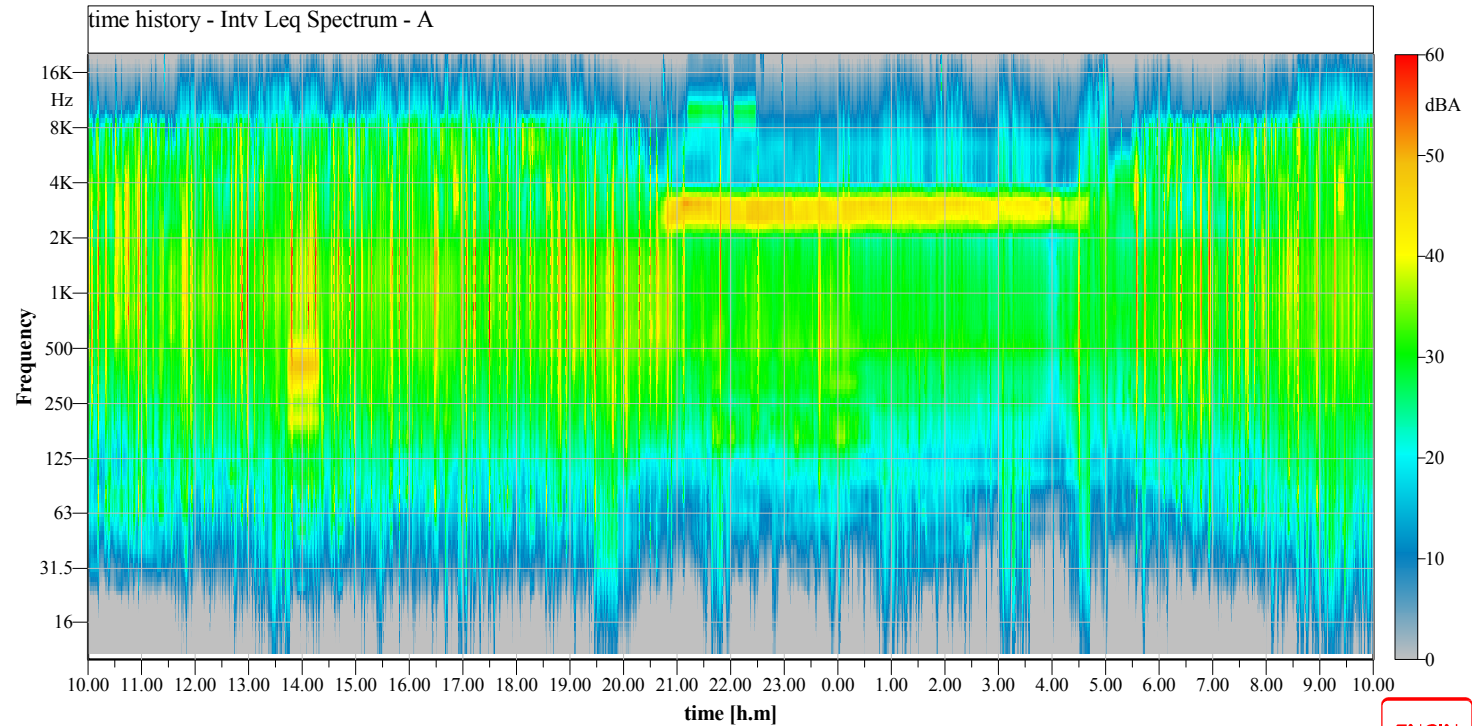
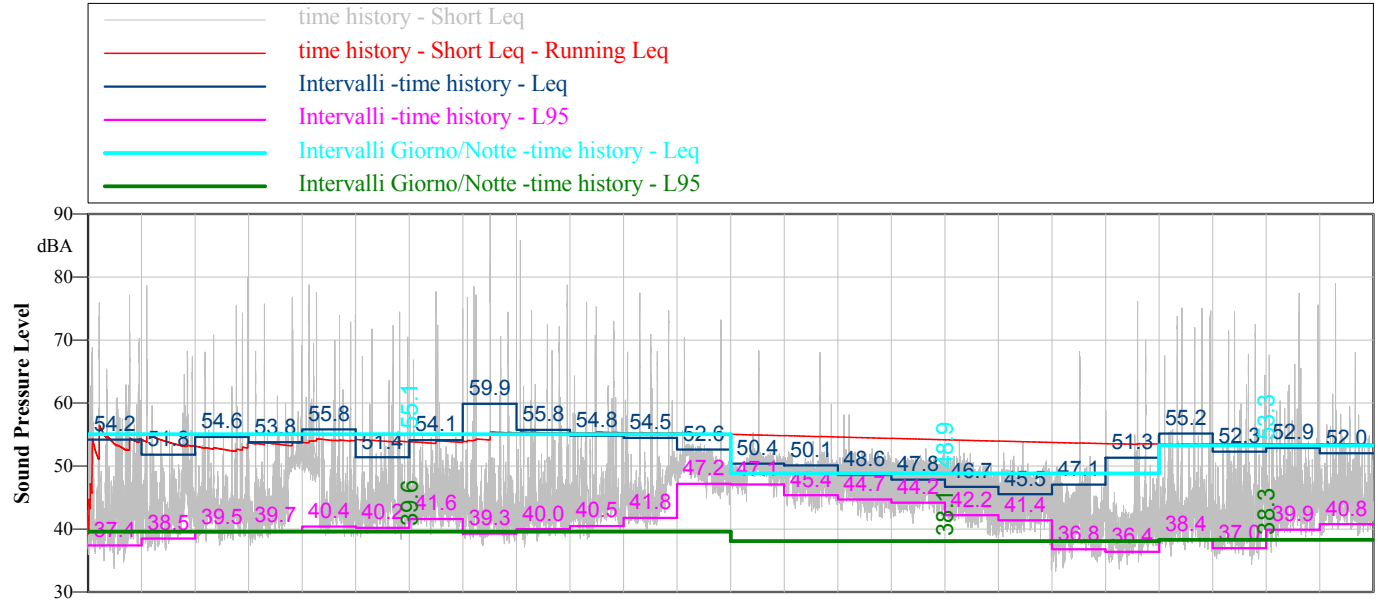


Centrale Termoelettrica a Carbone da 1320 MWe di Saline di Montebello Jonico (RC)

rilievi fonometrici ANTE OPERAM

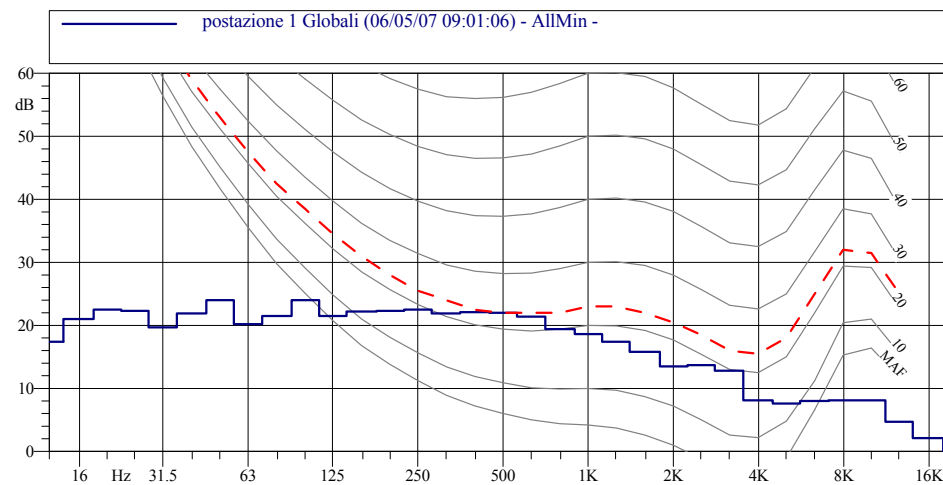
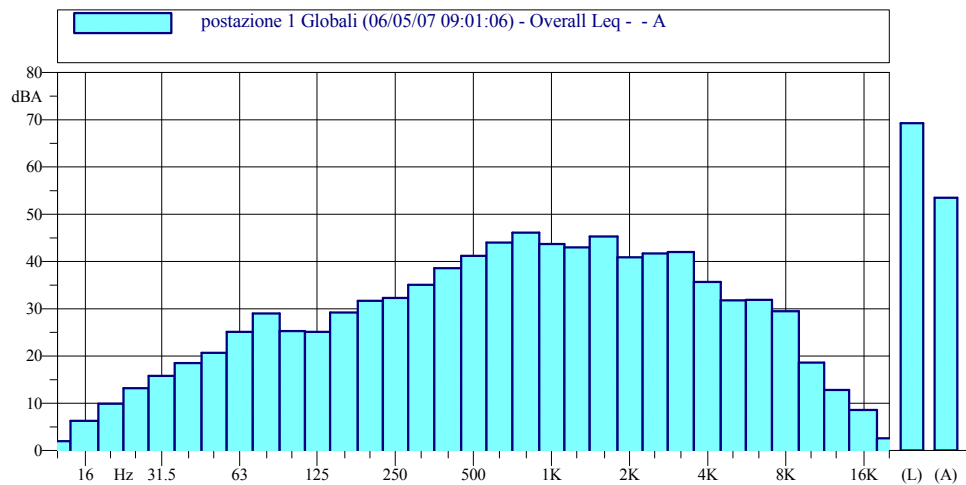
postazione di misura 1

periodo di misura in continuo 24 ore



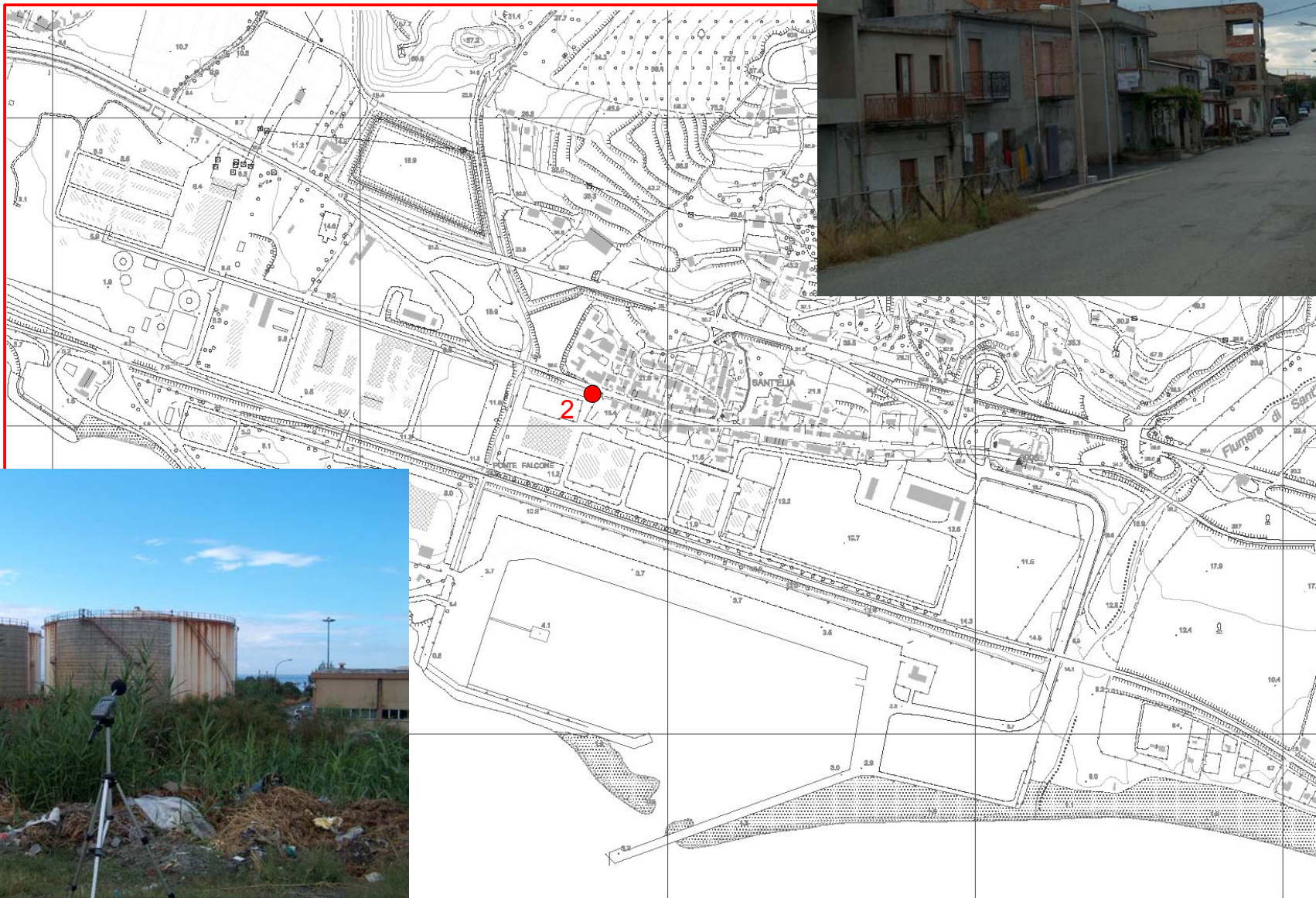
postazione di misura 1

periodo di misura in continuo 24 ore



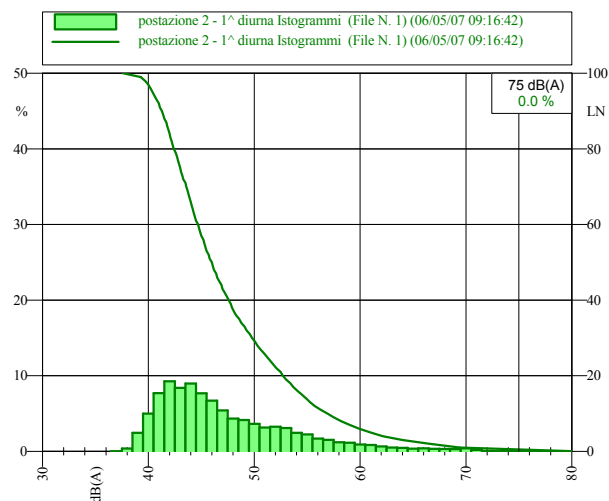
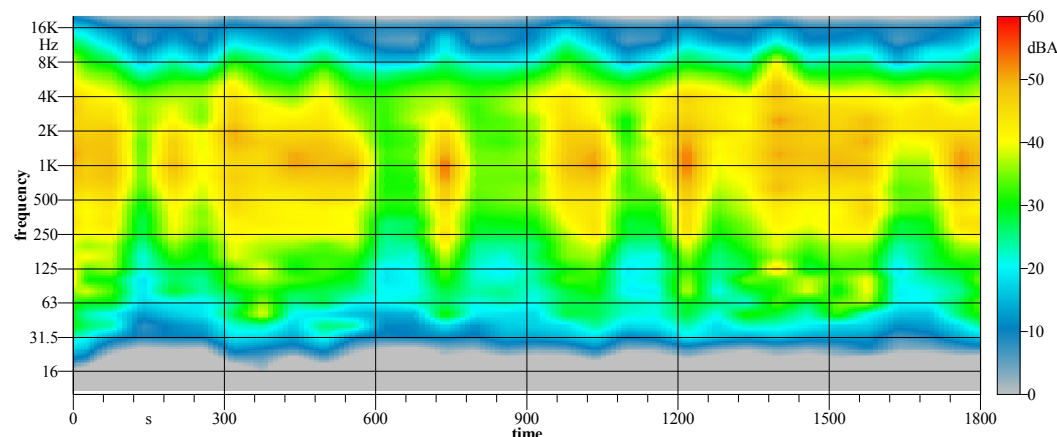
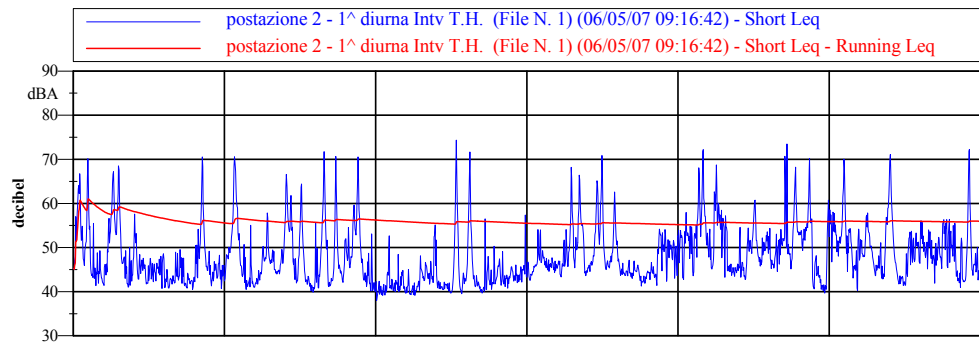
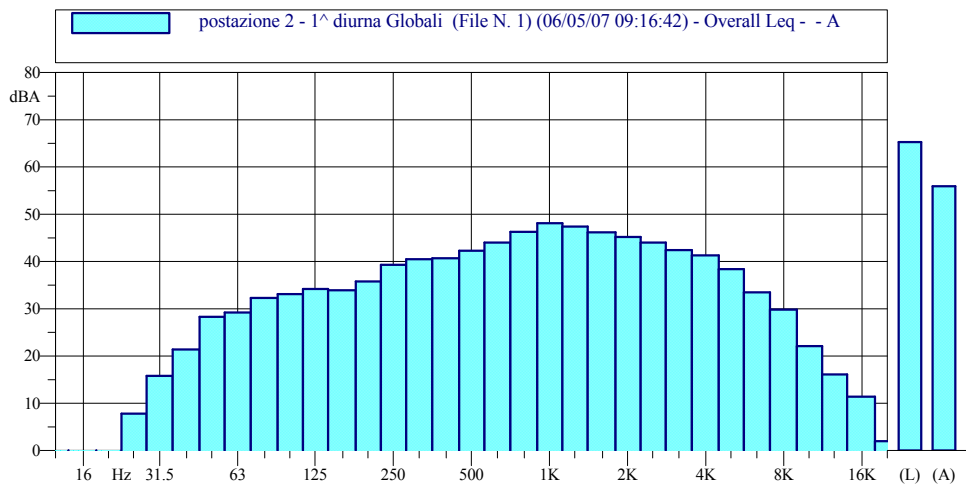
postazione di misura 2

destinazione d'uso da PRG B (residenziale di completamento)

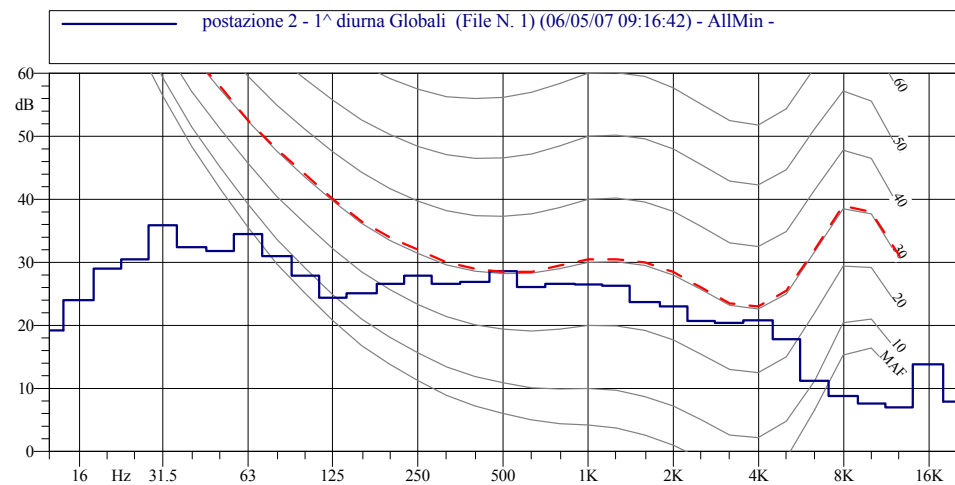


postazione di misura 2

periodo di misura 1^a diurna



Leq = 55.9 dB(A)
 L05 = 61.0 dB(A)
 L10 = 56.9 dB(A)
 L50 = 46.0 dB(A)
 L70 = 43.6 dB(A)
 L90 = 41.3 dB(A)
L95 = 40.4 dB(A)



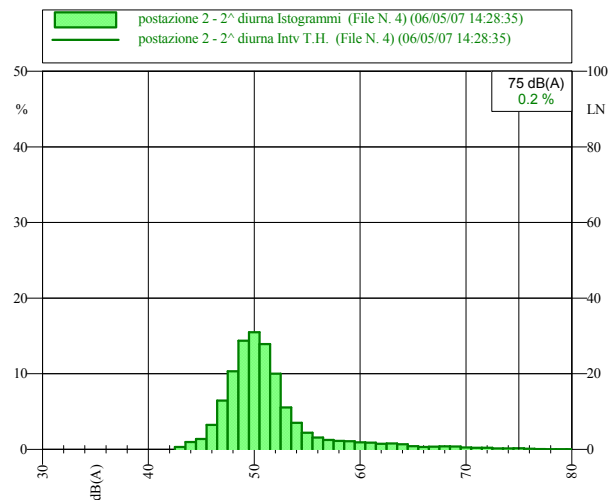
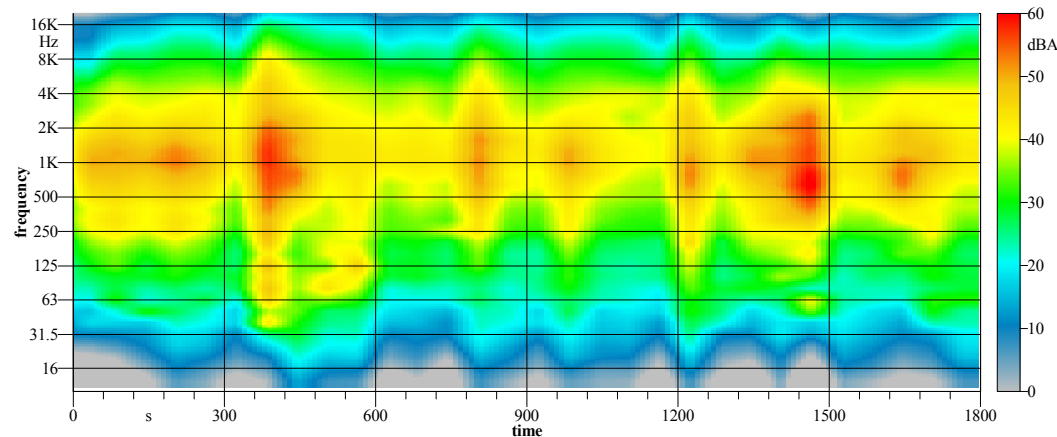
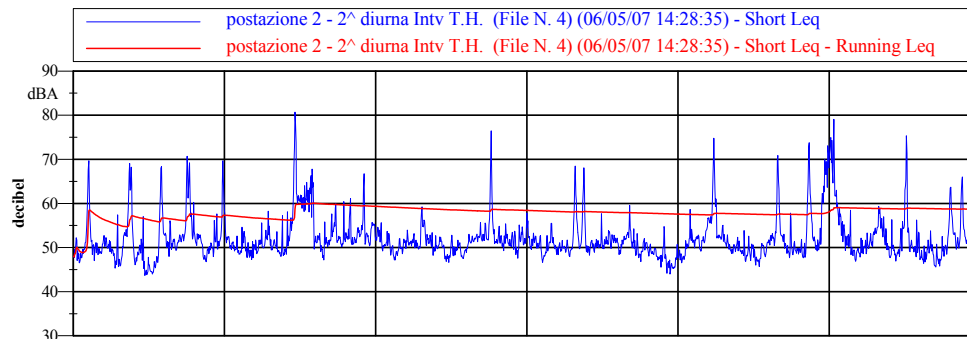
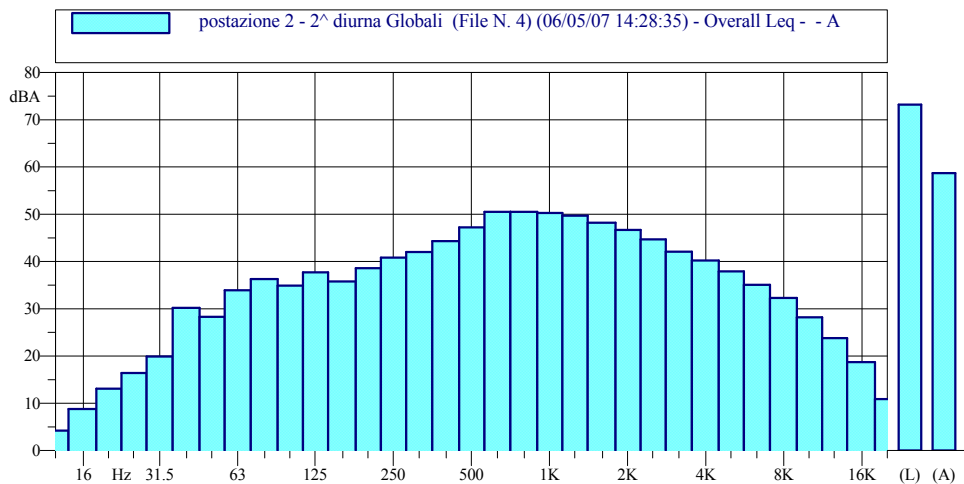
Centrale Termoelettrica a Carbone da 1320 MWe di Saline di Montebello Jonico (RC)

rilievi fonometrici ANTE OPERAM

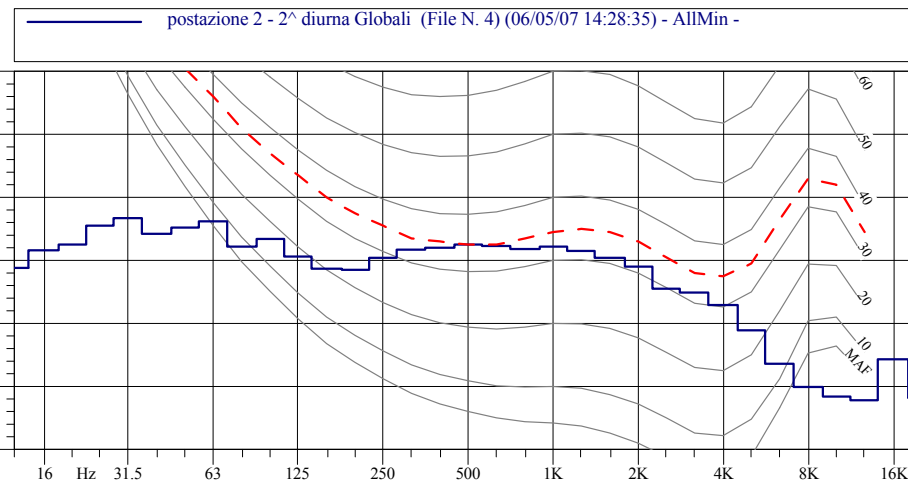
postazione di misura 2

periodo di misura 2^a diurna

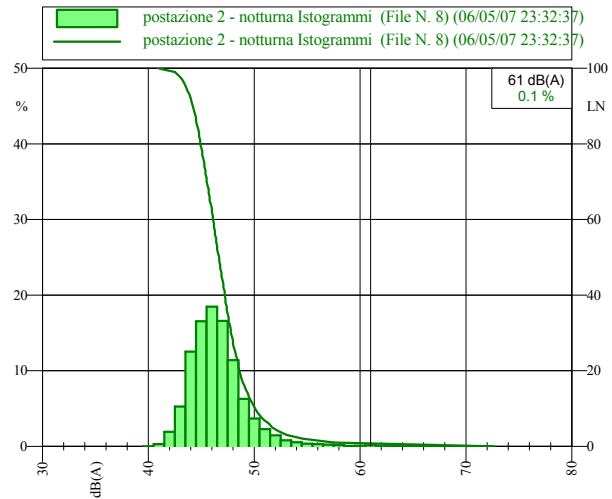
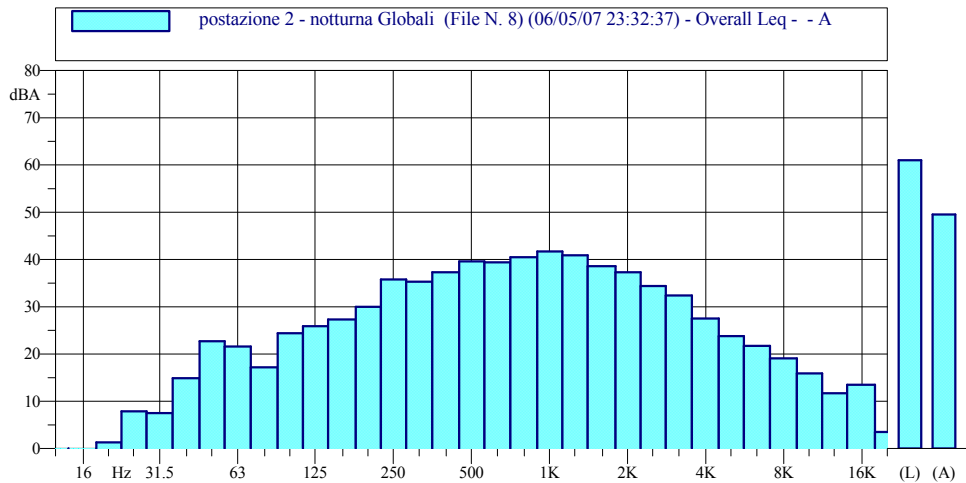
Allegato alla Valutazione di Impatto Acustico - Pagina: 8/23



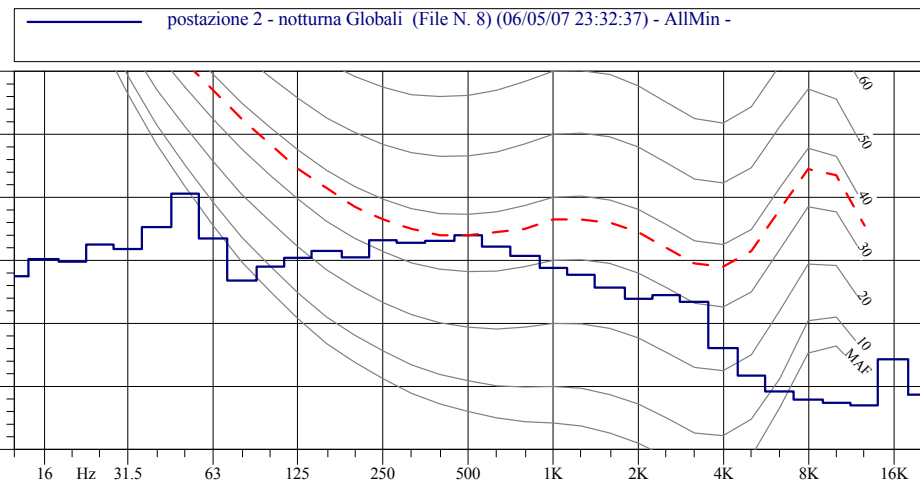
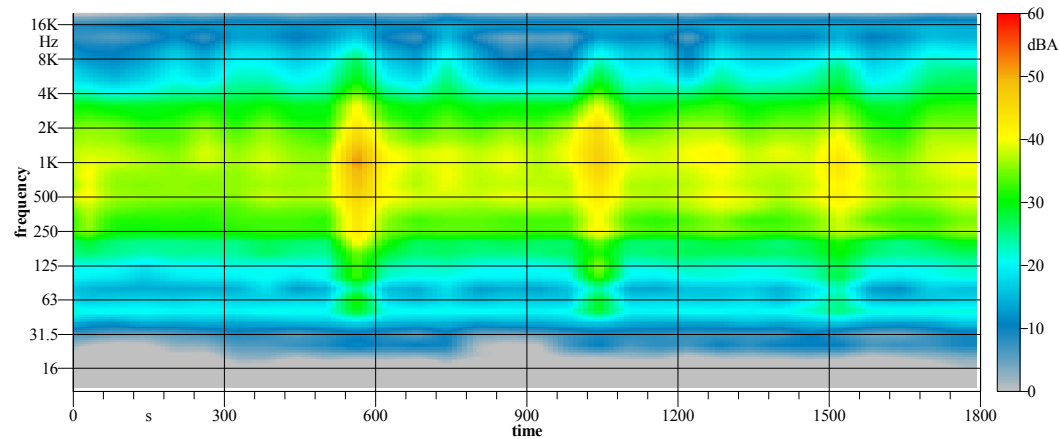
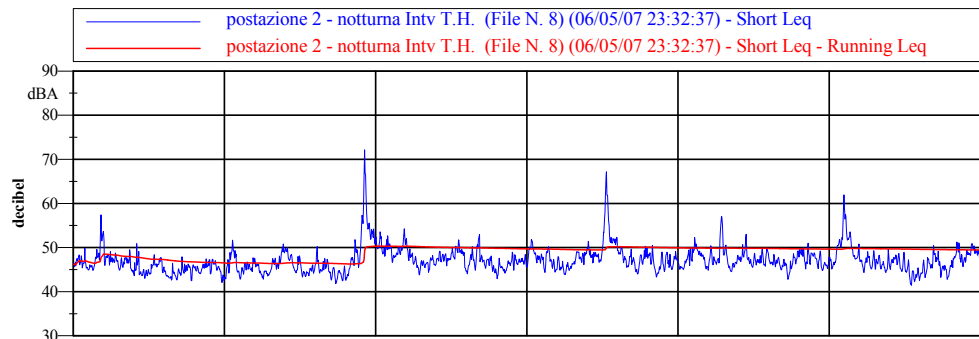
Leq = 58.7 dB(A)
 L05 = 62.5 dB(A)
 L10 = 57.5 dB(A)
 L50 = 50.8 dB(A)
 L70 = 49.5 dB(A)
 L90 = 47.6 dB(A)
L95 = 46.8 dB(A)



postazione di misura 2
 periodo di misura *notturna*

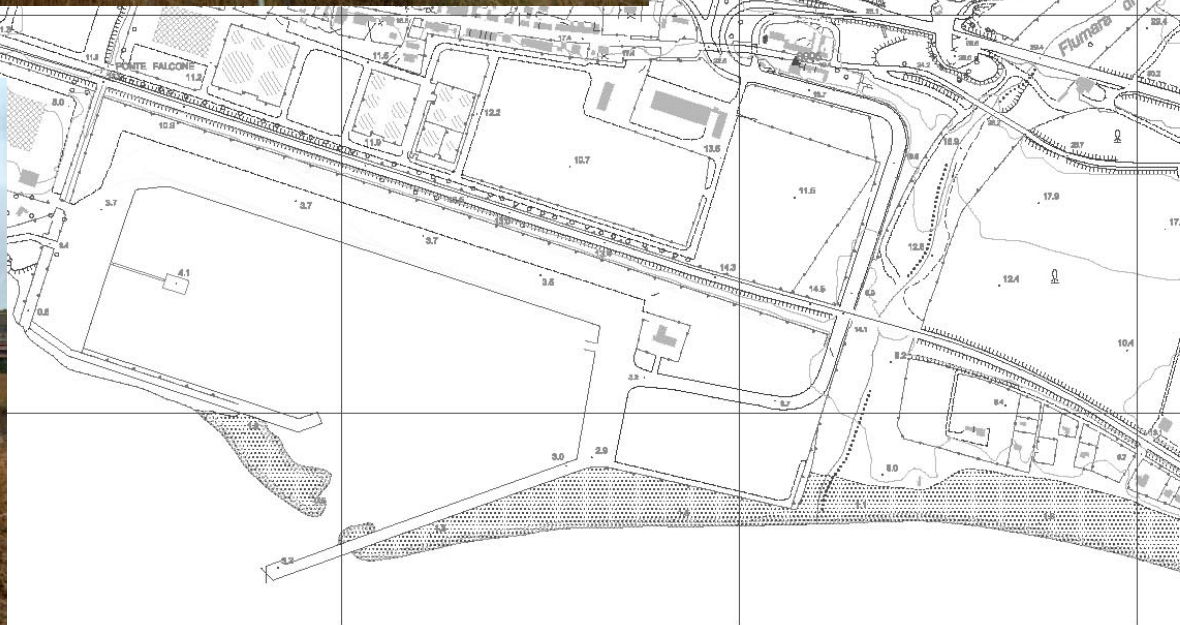
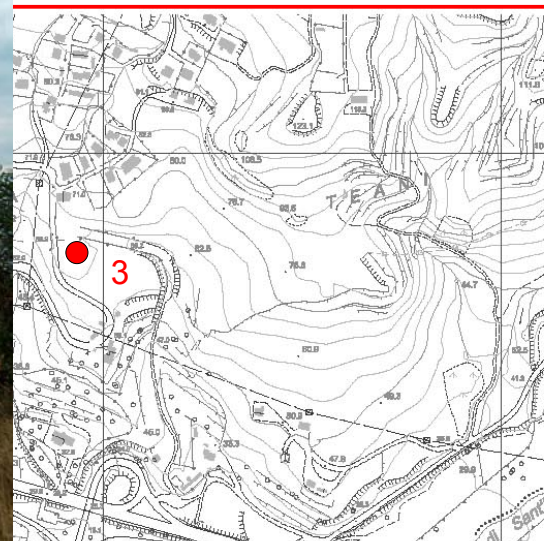
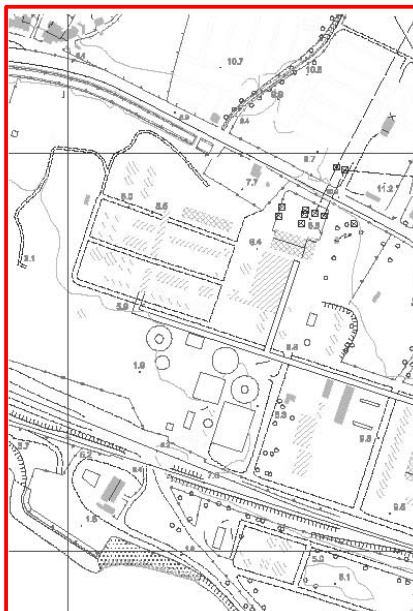


Leq = 49.5 dB(A)
 L05 = 51.7 dB(A)
 L10 = 50.1 dB(A)
 L50 = 46.7 dB(A)
 L70 = 45.5 dB(A)
 L90 = 44.2 dB(A)
L95 = 43.5 dB(A)



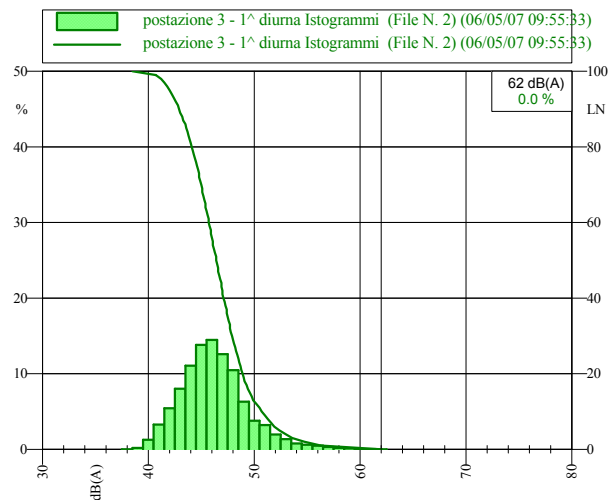
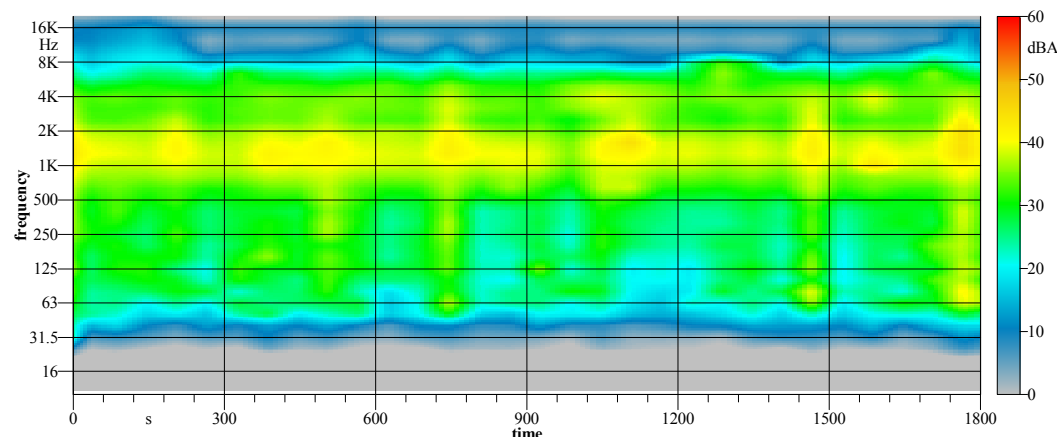
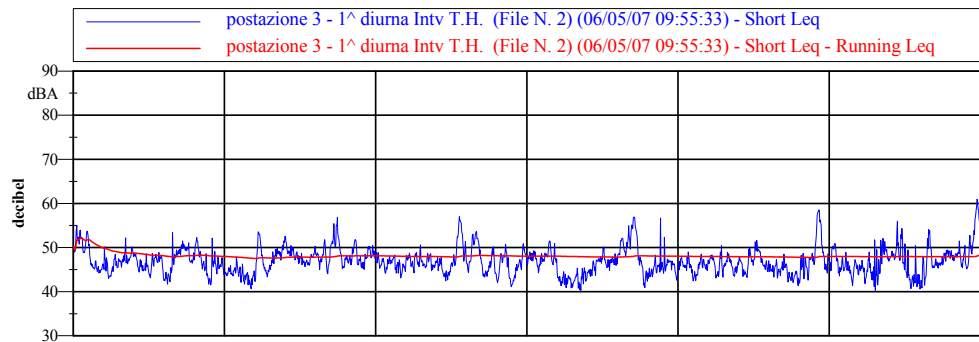
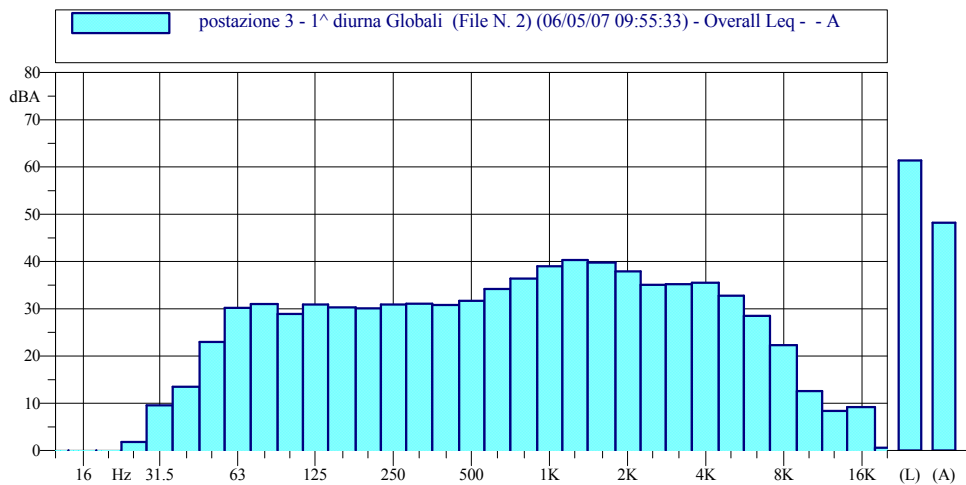
postazione di misura 3

destinazione d'uso da PRG E (agricola)

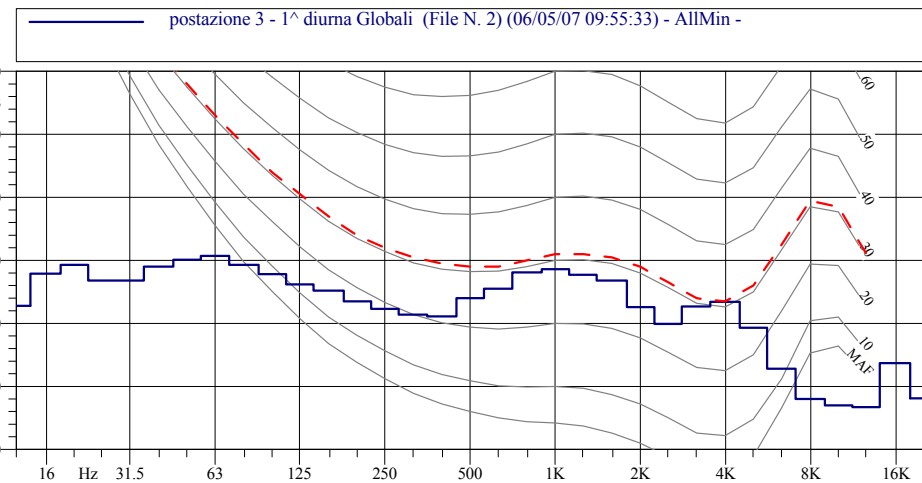


postazione di misura 3

periodo di misura 1^ diurna

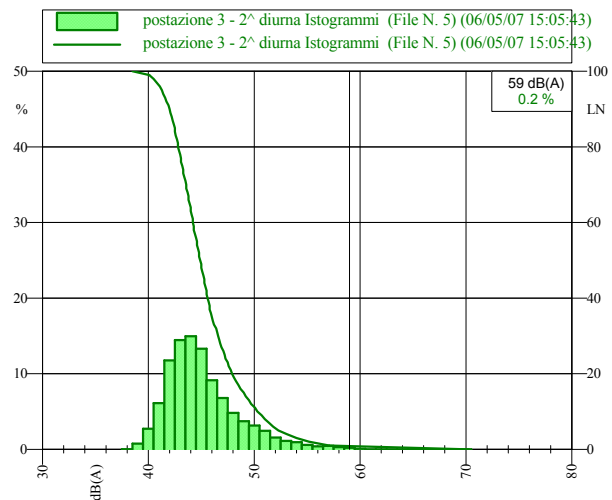
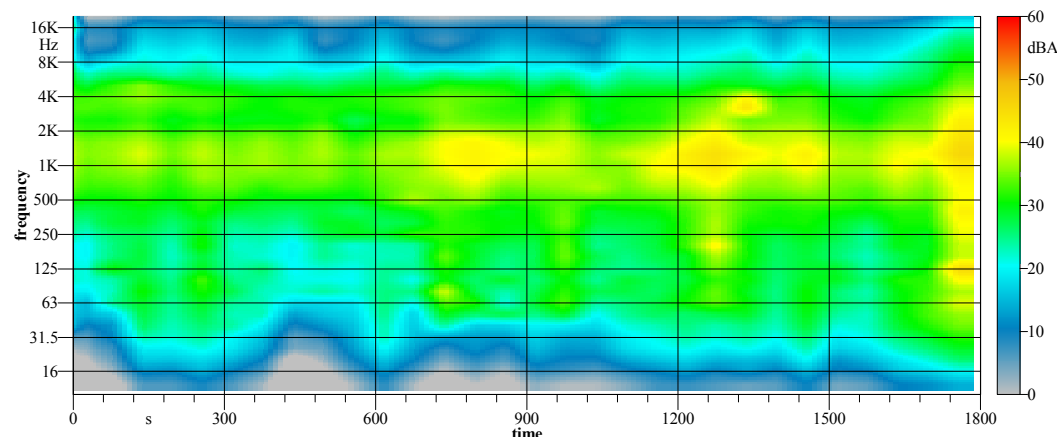
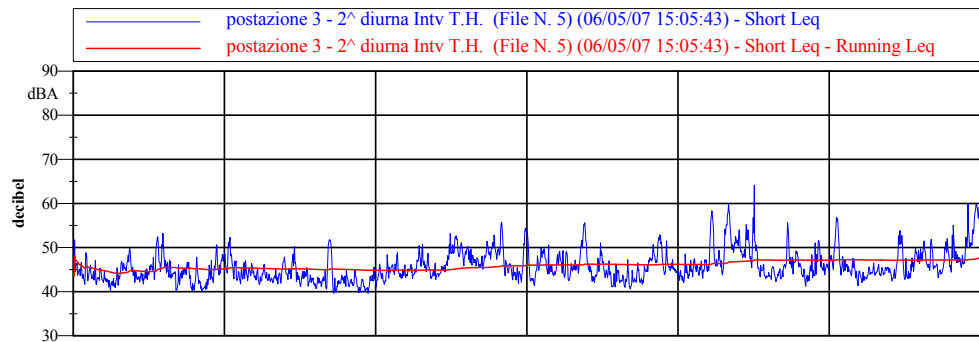
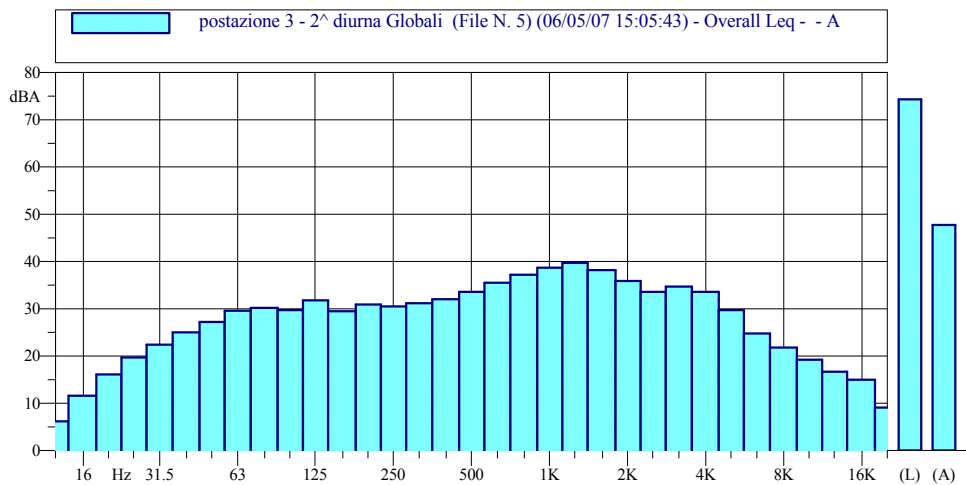


Leq = 48.2 dB(A)
 L05 = 52.4 dB(A)
 L10 = 50.7 dB(A)
 L50 = 46.4 dB(A)
 L70 = 45.0 dB(A)
 L90 = 42.9 dB(A)
L95 = 42.0 dB(A)

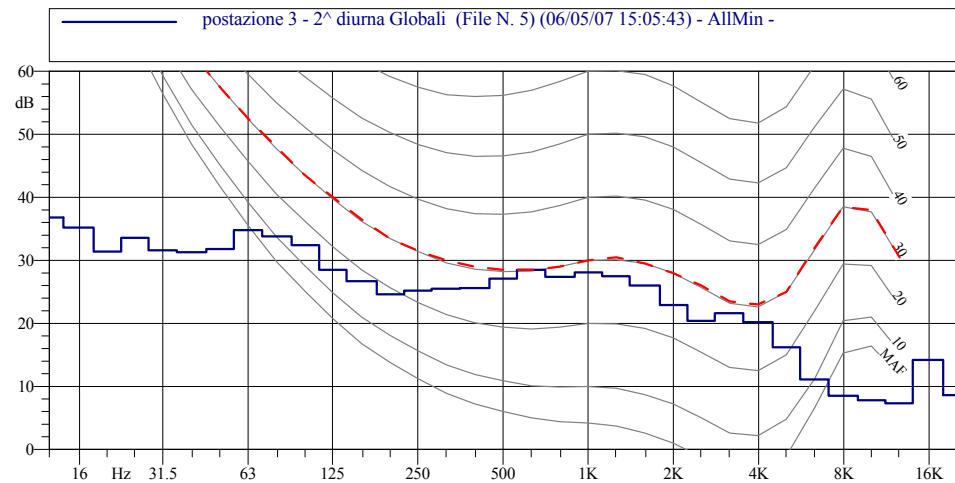


postazione di misura 3

periodo di misura 2^ diurna



Leq = 47.7 dB(A)
 L05 = 52.3 dB(A)
 L10 = 50.3 dB(A)
 L50 = 44.9 dB(A)
 L70 = 43.6 dB(A)
 L90 = 42.0 dB(A)
L95 = 41.3 dB(A)



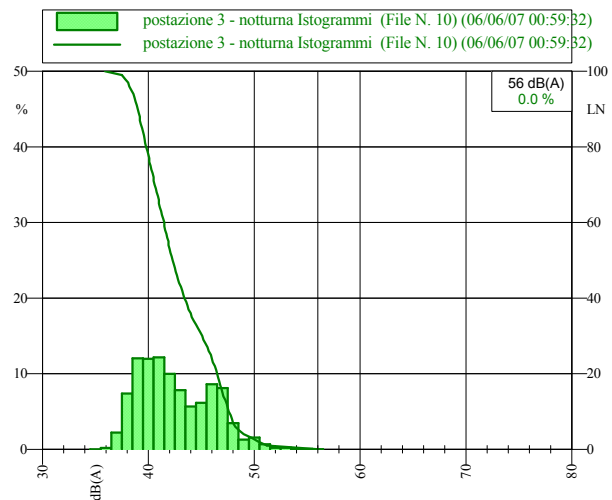
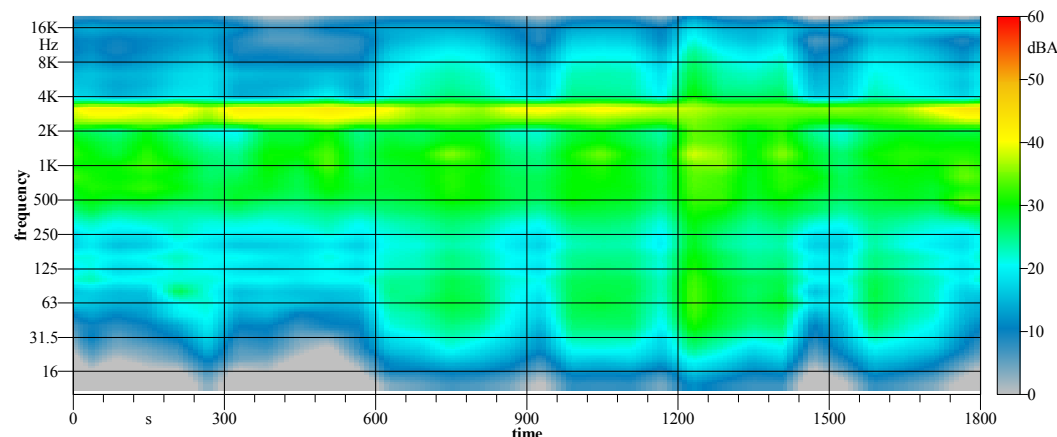
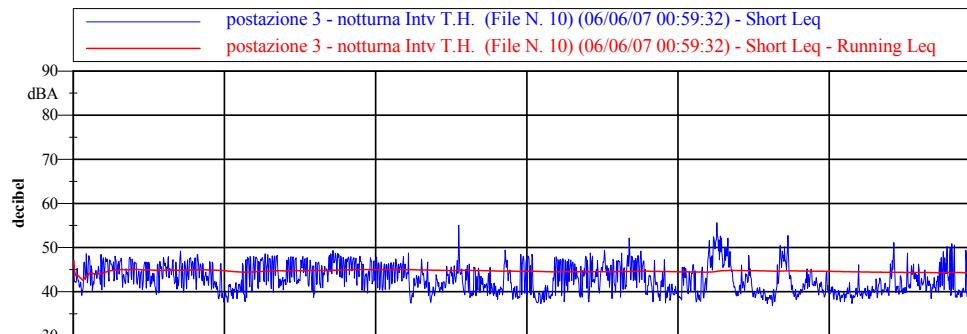
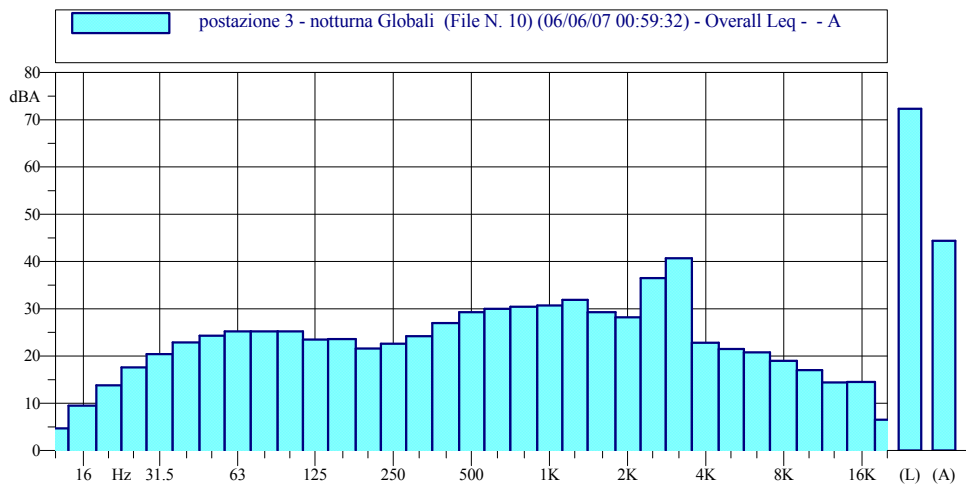
Centrale Termoelettrica a Carbone da 1320 MWe di Saline di Montebello Jonico (RC)

rilievi fonometrici ANTE OPERAM

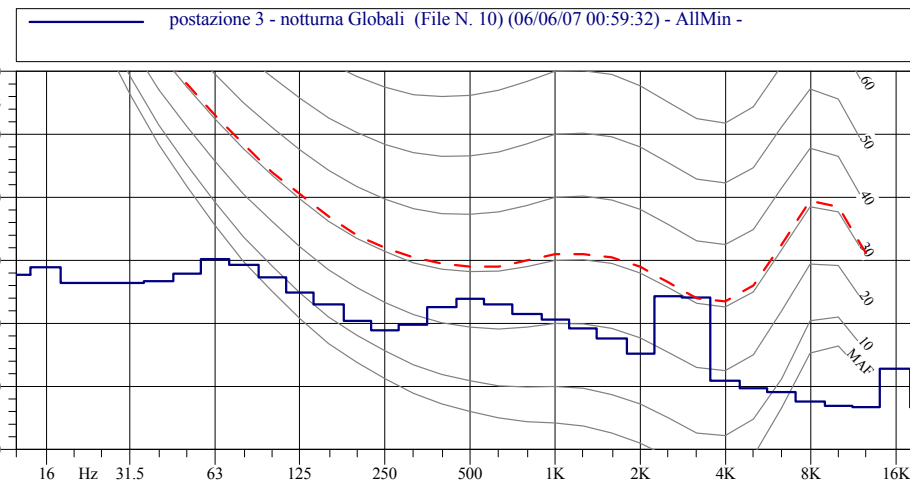
postazione di misura 3

periodo di misura **notturna**

Allegato alla Valutazione di Impatto Acustico - Pagina: 13/23



Leq = 44.5 dB(A)
 L05 = 48.6 dB(A)
 L10 = 47.6 dB(A)
 L50 = 42.3 dB(A)
 L70 = 40.6 dB(A)
 L90 = 39.0 dB(A)
L95 = 38.4 dB(A)



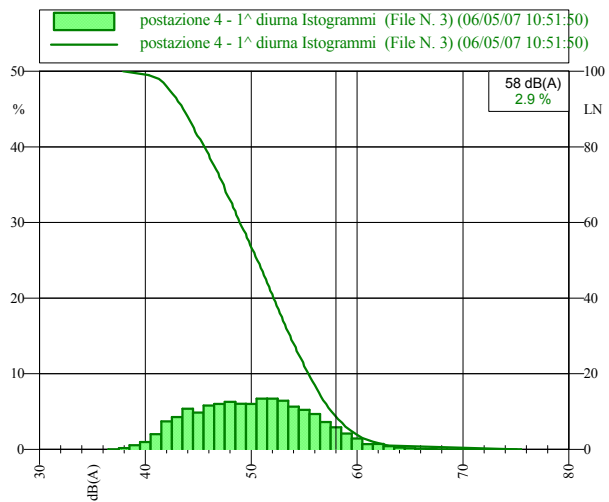
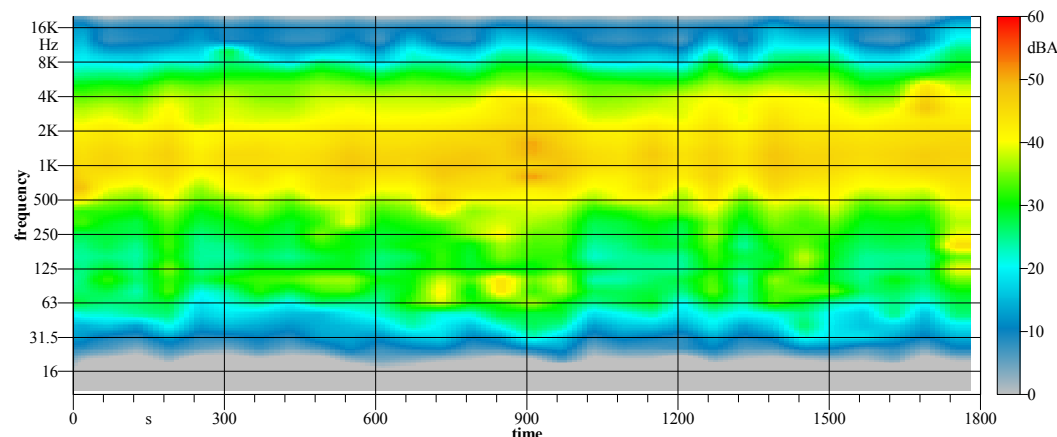
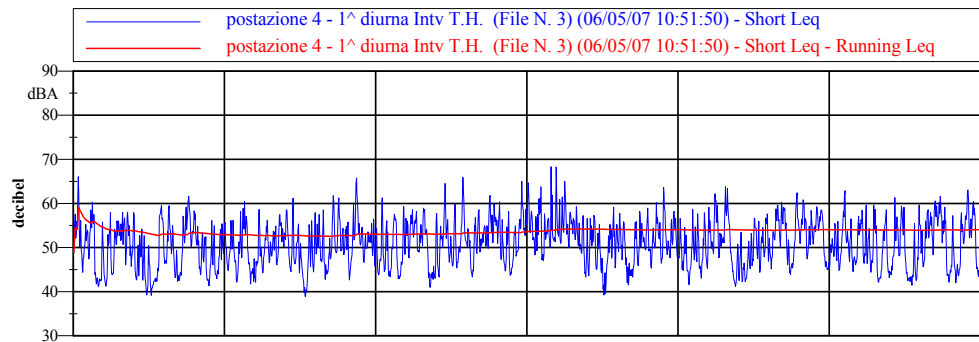
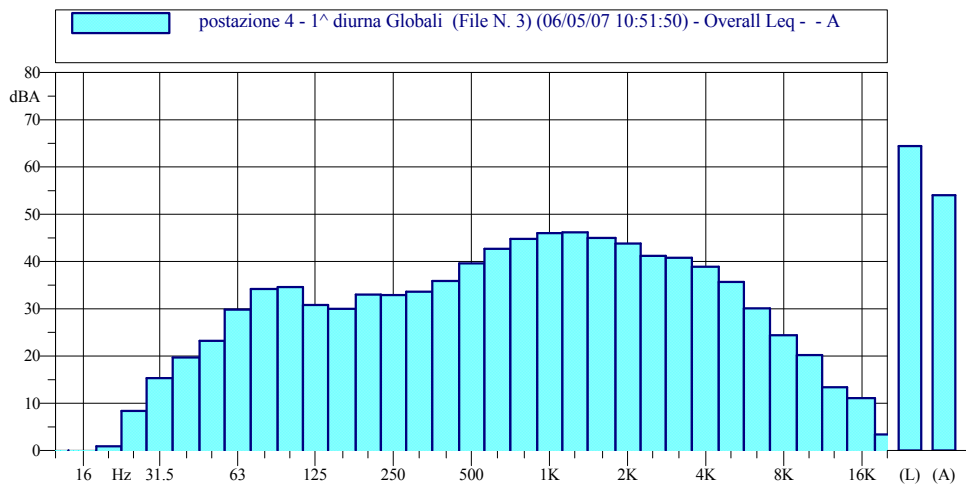
postazione di misura 4

destinazione d'uso da PRG E (agricola)

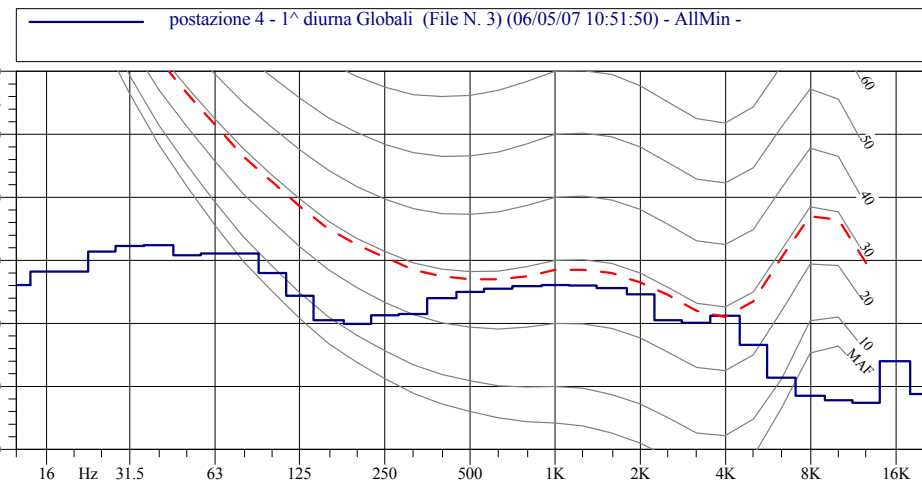


postazione di misura 4

periodo di misura 1^a diurna



Leq = 54.0 dB(A)
 L05 = 59.4 dB(A)
 L10 = 57.6 dB(A)
 L50 = 50.6 dB(A)
 L70 = 47.4 dB(A)
 L90 = 43.6 dB(A)
L95 = 42.3 dB(A)



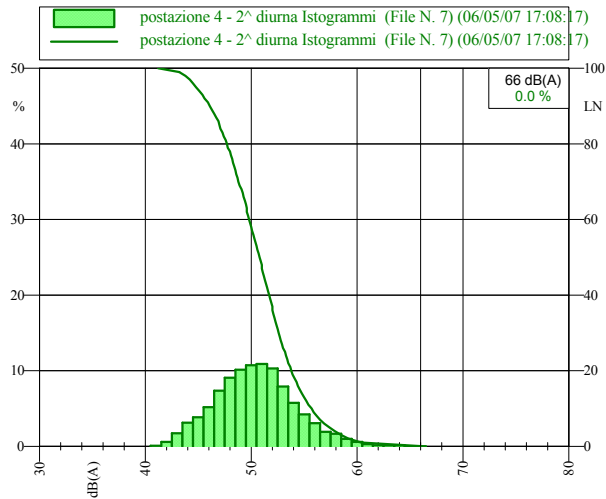
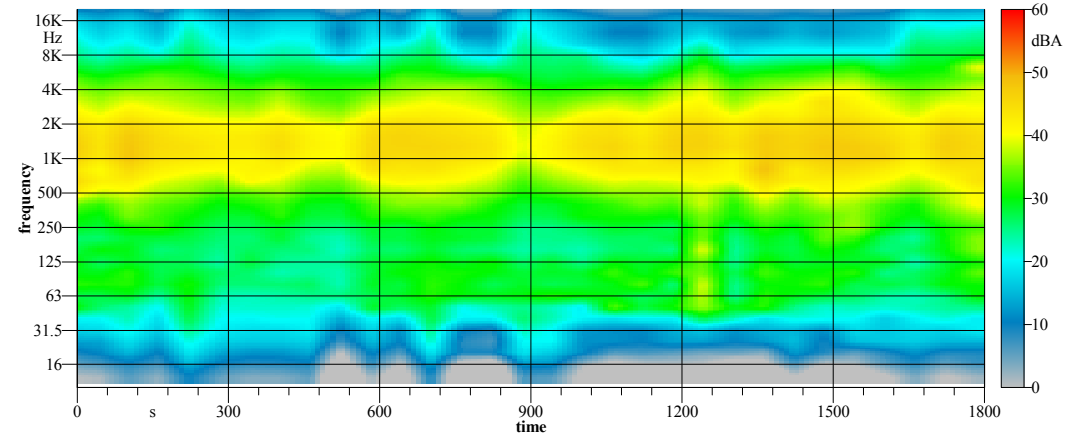
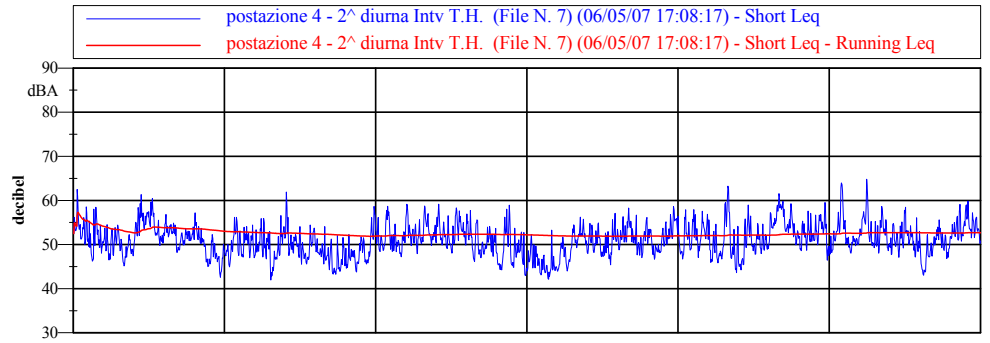
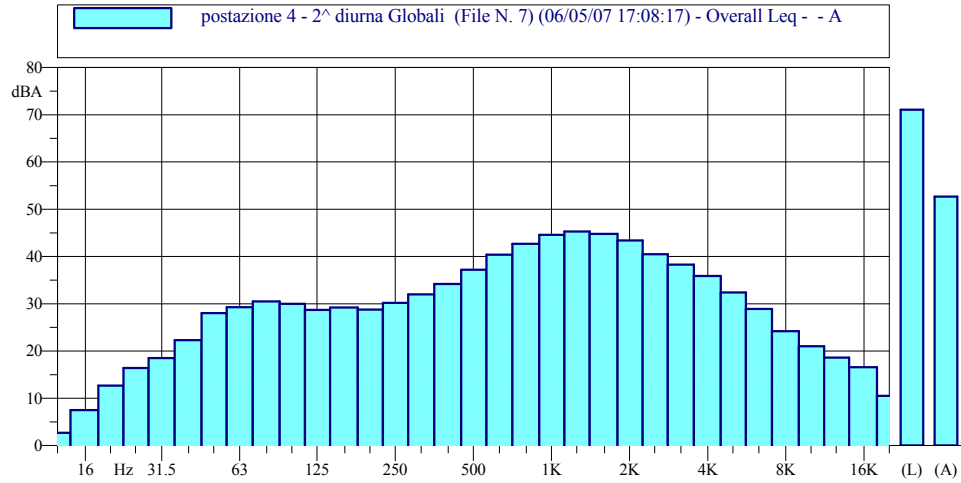
Centrale Termoelettrica a Carbone da 1320 MWe di Saline di Montebello Jonico (RC)

rilievi fonometrici ANTE OPERAM

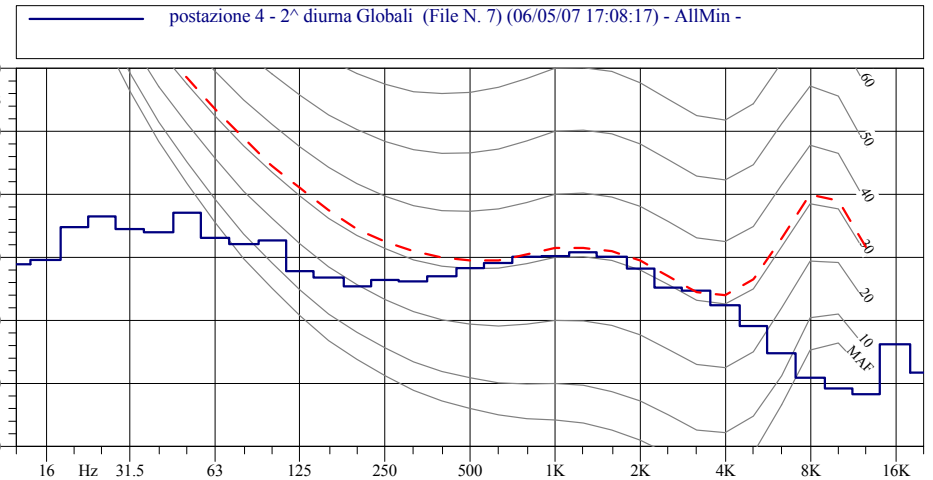
postazione di misura 4

periodo di misura 2^a diurna

Allegato alla Valutazione di Impatto Acustico - Pagina: 16/23

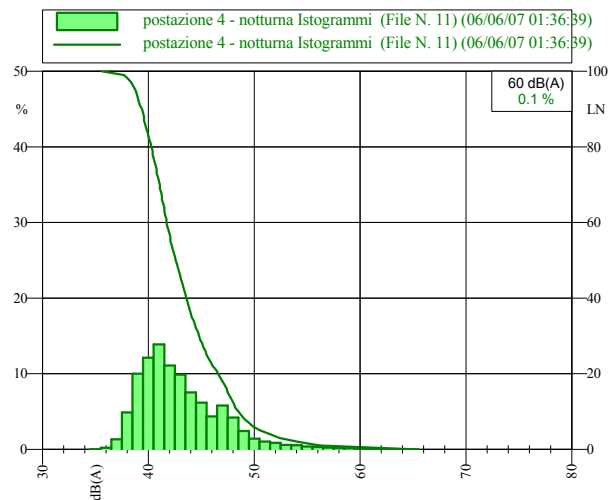
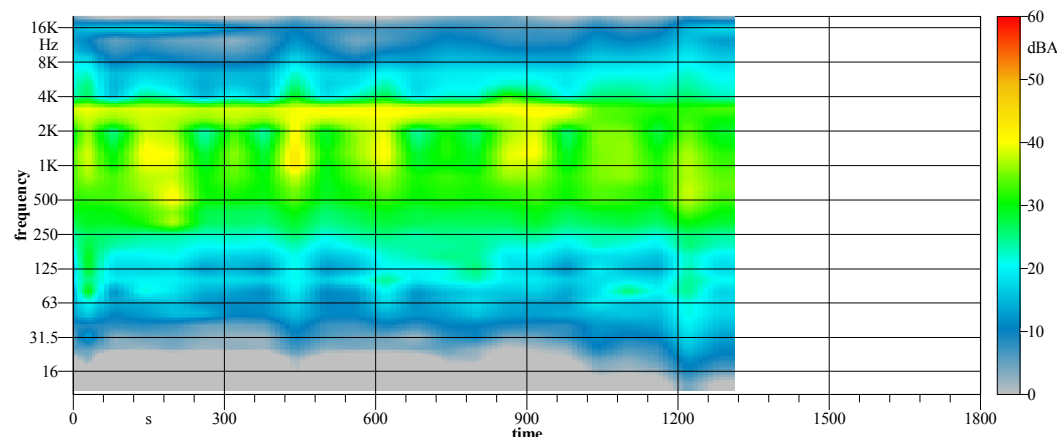
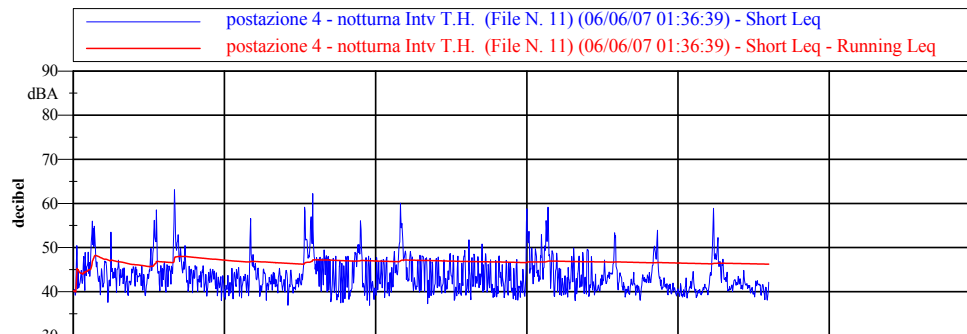
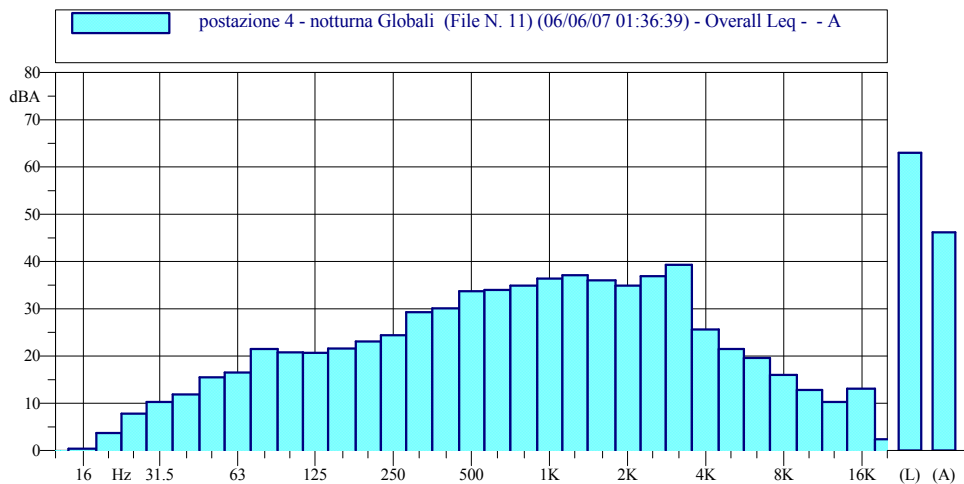


Leq = 52.7 dB(A)
 L05 = 57.4 dB(A)
 L10 = 55.7 dB(A)
 L50 = 50.8 dB(A)
 L70 = 48.8 dB(A)
 L90 = 46.1 dB(A)
L95 = 44.8 dB(A)

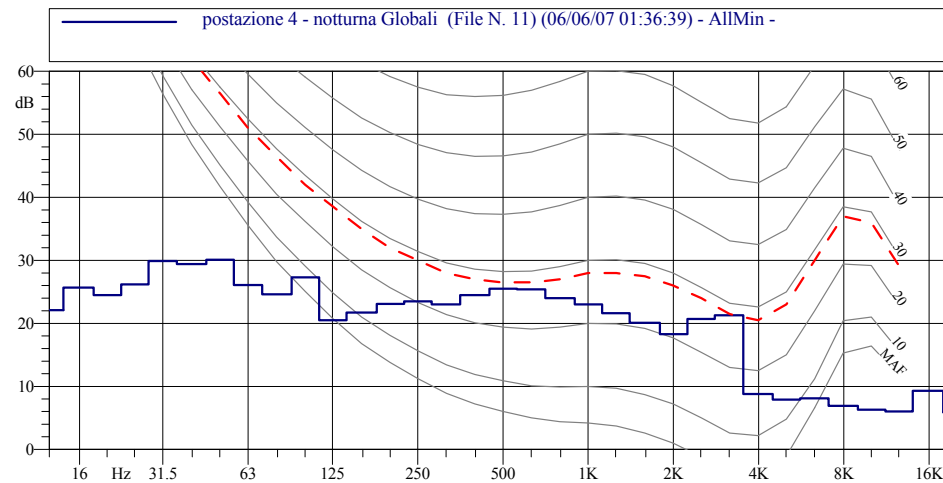


postazione di misura 4

periodo di misura notturna



Leq = 46.2 dB(A)
 L05 = 50.6 dB(A)
 L10 = 48.5 dB(A)
 L50 = 42.6 dB(A)
 L70 = 41.1 dB(A)
 L90 = 39.4 dB(A)
L95 = 38.8 dB(A)



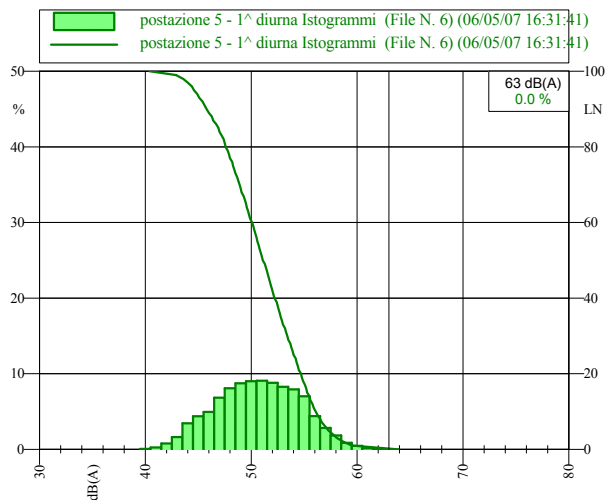
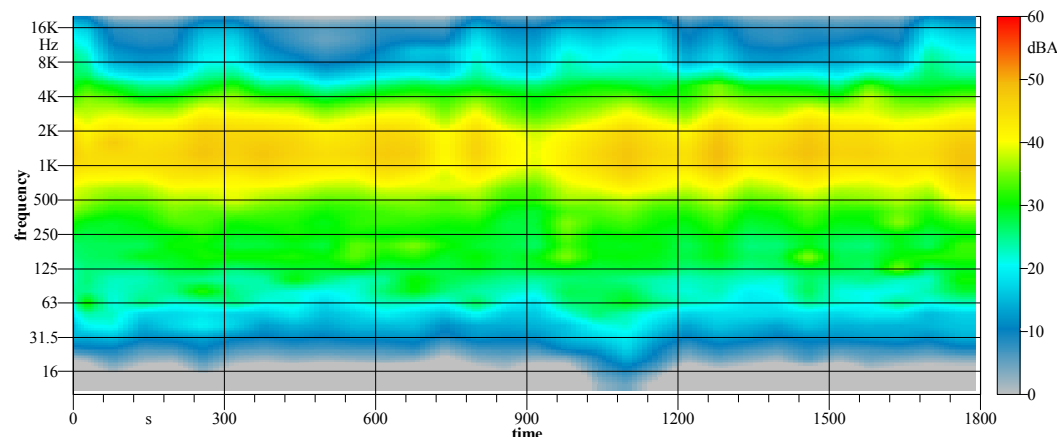
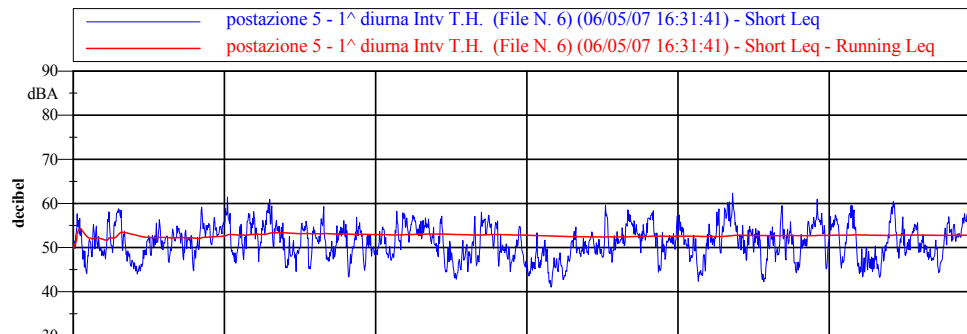
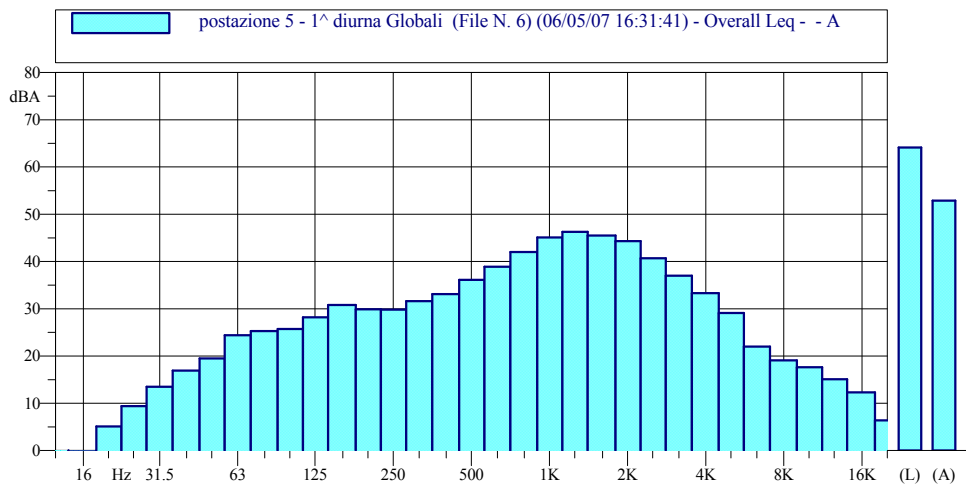
postazione di misura 5

destinazione d'uso da PRG E (agricola)

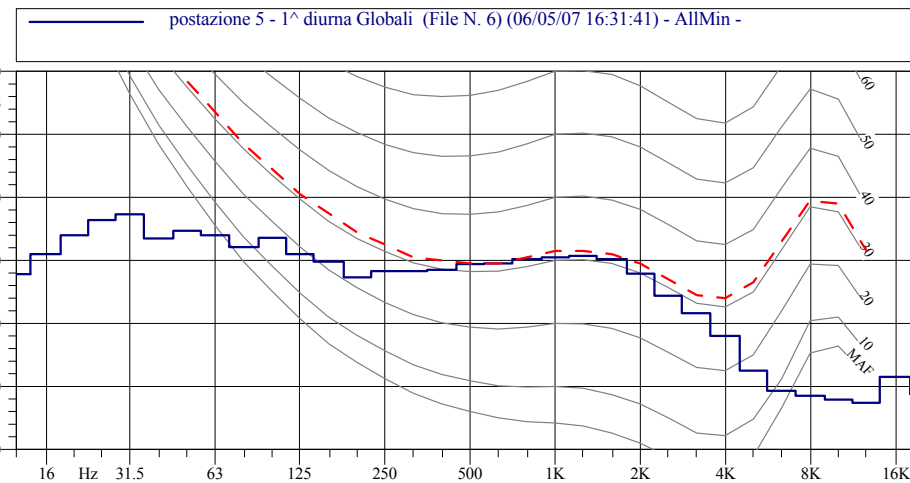


postazione di misura 5

periodo di misura 1^ diurna

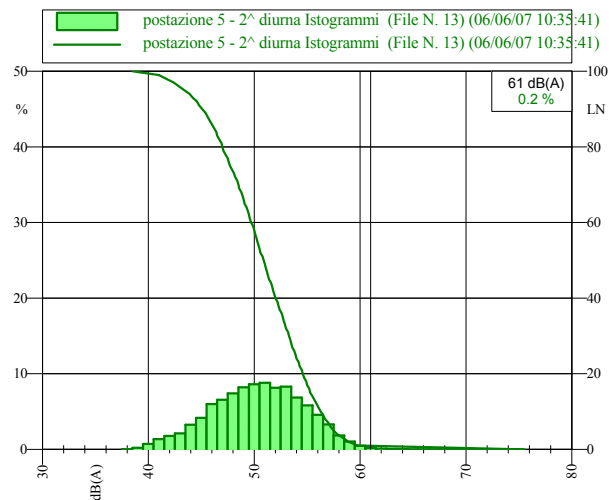
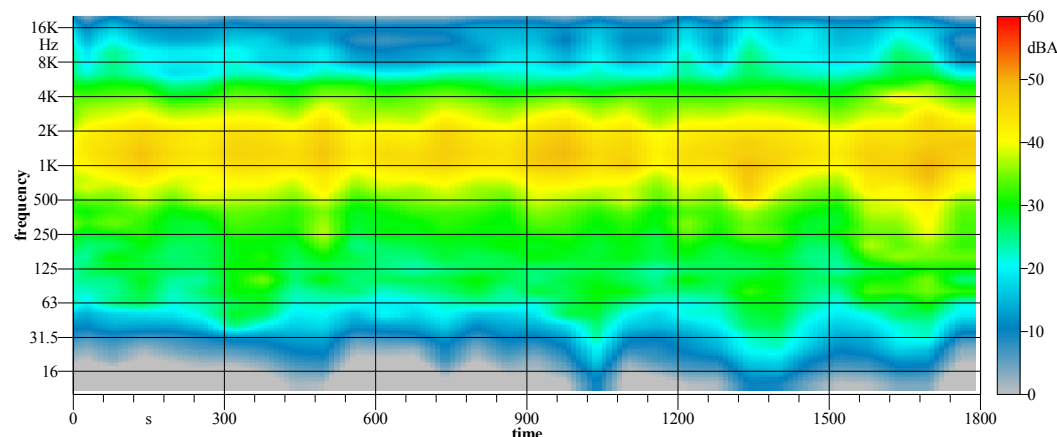
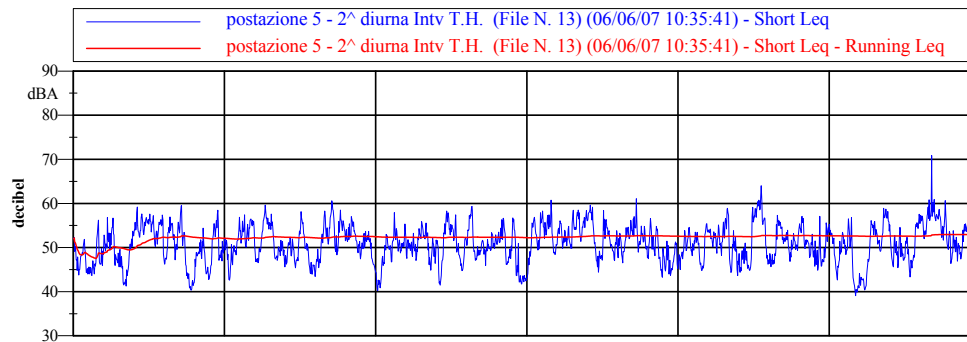
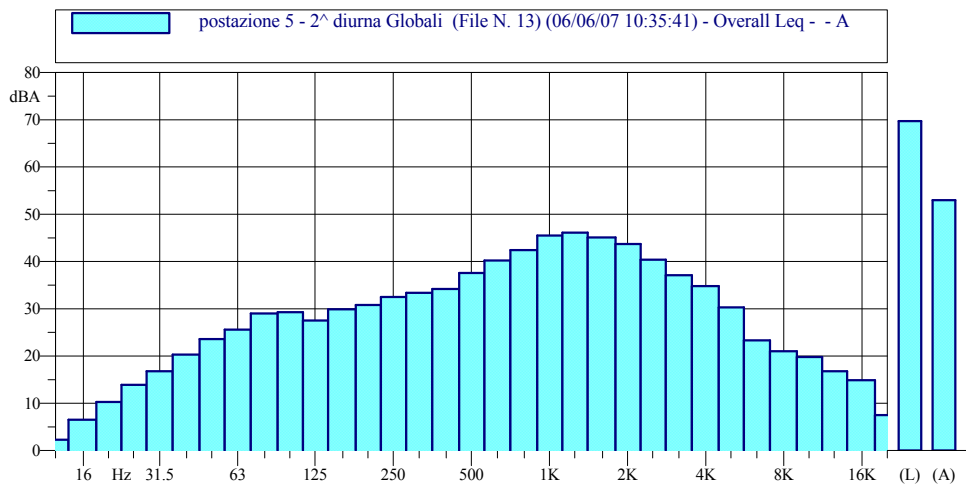


Leq = 52.8 dB(A)
 L05 = 57.3 dB(A)
 L10 = 56.1 dB(A)
 L50 = 51.1 dB(A)
 L70 = 48.9 dB(A)
 L90 = 45.8 dB(A)
L95 = 44.6 dB(A)

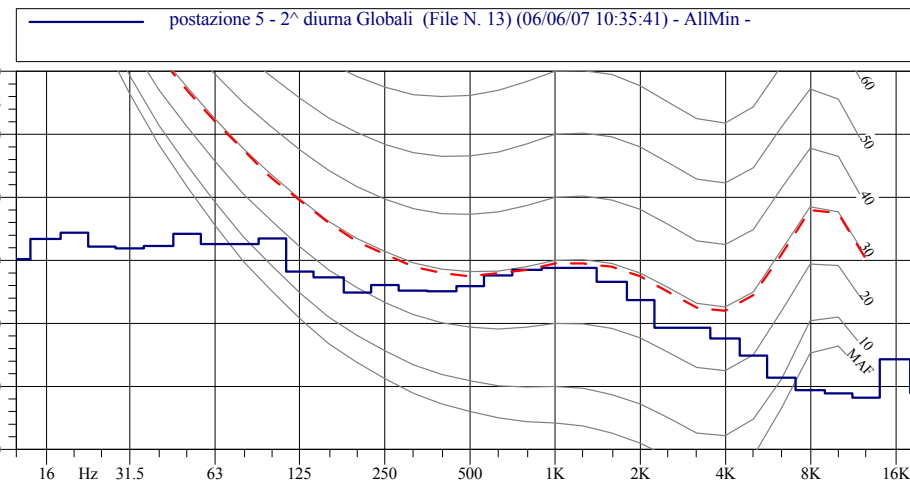


postazione di misura 5

periodo di misura 2^a diurna

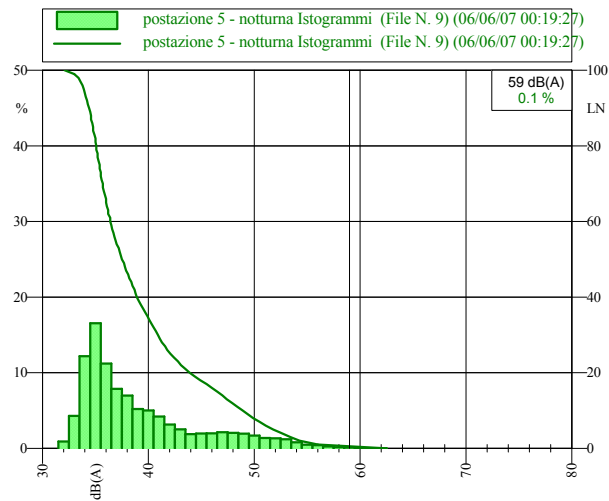
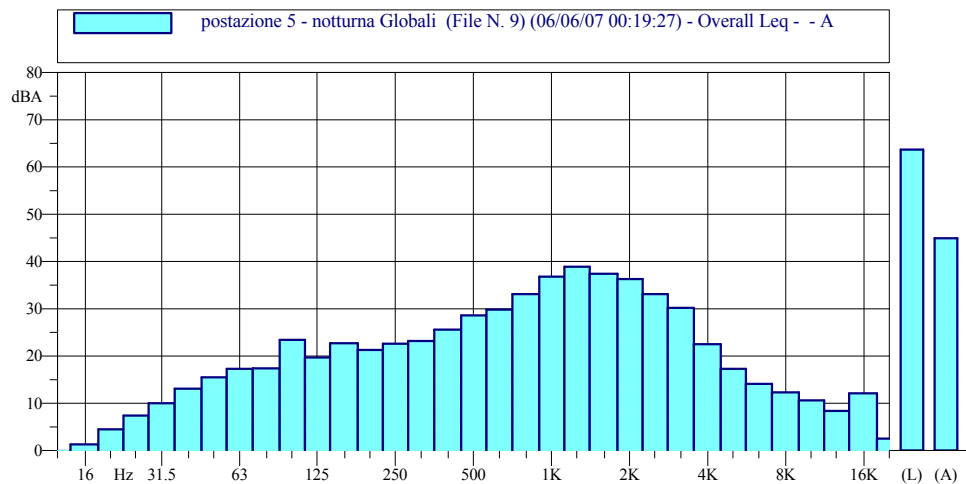


Leq = 52.9 dB(A)
 L05 = 57.5 dB(A)
 L10 = 56.3 dB(A)
 L50 = 50.9 dB(A)
 L70 = 48.5 dB(A)
 L90 = 45.1 dB(A)
L95 = 43.4 dB(A)

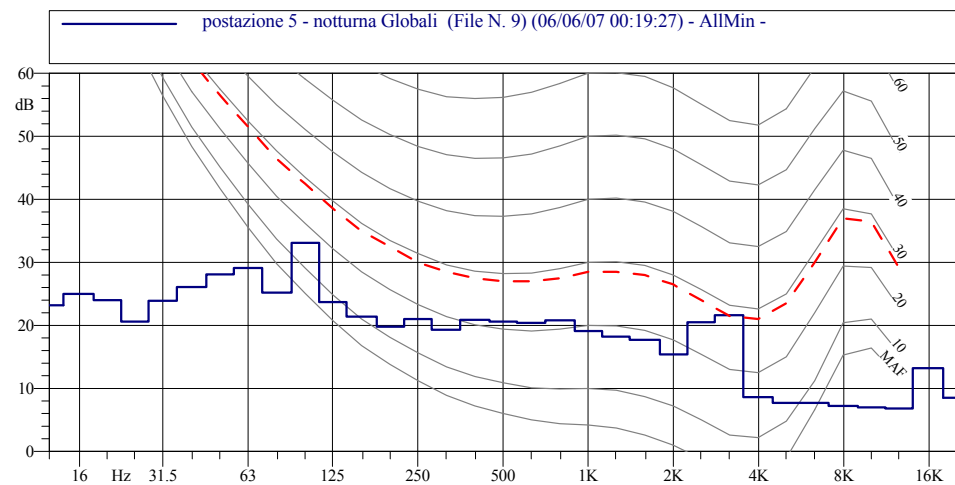
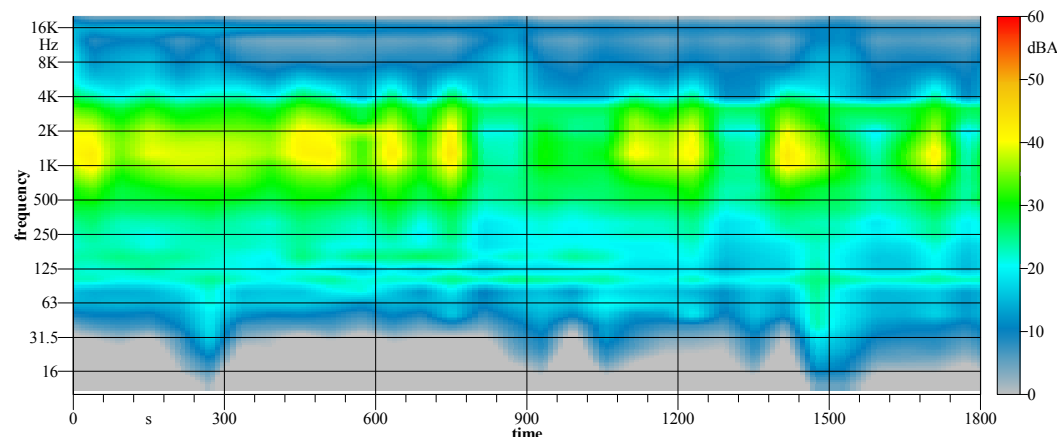
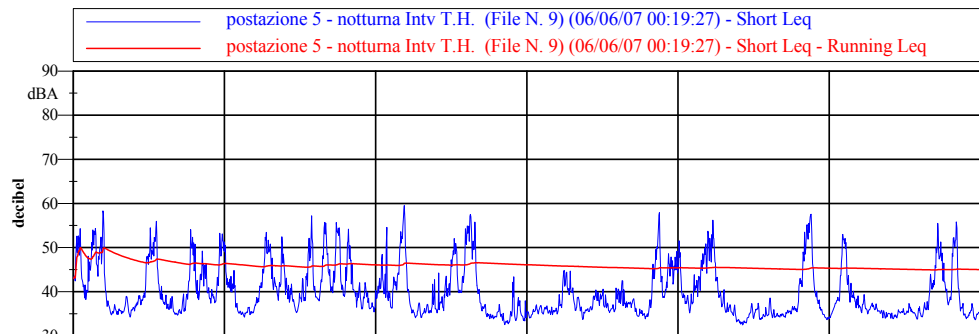


postazione di misura 5

periodo di misura *notturna*



Leq = 44.9 dB(A)
 L05 = 51.8 dB(A)
 L10 = 48.9 dB(A)
 L50 = 37.5 dB(A)
 L70 = 35.7 dB(A)
 L90 = 34.4 dB(A)
L95 = 33.9 dB(A)



SIT

SERVIZIO DI TARATURA IN ITALIA
Italian Calibration Service



CENTRO DI TARATURA 163
Calibration Centre



Spectra Srl
Laboratorio Certificazioni

via F. Gilera, 110
Arcore (MI) - Italia

Tel.: 039 613321
Fax: 039 6133235

spectra@spectra.it
www.spectra.it

ESTRATTO DEL CERTIFICATO DI TARATURA N. 2170
Extract of Calibration Certificate No. 2170

Data di Emissione <i>Date of Issue</i>	2006/12/21
Destinatario <i>Addressee</i>	DB Project
	Via Giovanni XXXIII°, 26/a Madone

Condizioni ambientali durante la misura
Environmental parameters during measurements

Pressione	1009,1 hPa
Temperatura	20,5 °C
Umidità Relativa	40,4 %

Strumenti sottoposti a verifica
Instrumentation under test

Strumento	Costruttore	Modello	N°Serie/Matricola
Fonometro	LARSON DAVIS	L&D 824 SLM	0227
Microfono	LARSON DAVIS	L&D 2541	5341
Preamplificatore Mic		L&D PRM902	0506

Il Responsabile del Centro
Head of the Centre

Caglio Emilio



SIT

SERVIZIO DI TARATURA IN ITALIA
Italian Calibration Service



CENTRO DI TARATURA 163
Calibration Centre



Spectra Srl
Laboratorio Certificazioni

via F. Gilera, 110
Arcore (MI) - Italia

Tel.: 039 613321
Fax: 039 6133235

spectra@spectra.it
www.spectra.it

ESTRATTO DEL CERTIFICATO DI TARATURA N. 2171
Extract of Calibration Certificate No. 2171

Data di Emissione <i>Date of Issue</i>	2006/12/21
Destinatario <i>Addressee</i>	DB Project
	Via Giovanni XXXIII°, 26/a Madone

Condizioni ambientali durante la misura
Environmental parameters during measurements

Pressione	1009,6 hPa
Temperatura	21,6 °C
Umidità Relativa	40,3 %

Strumenti sottoposti a verifica
Instrumentation under test

Strumento	Costruttore	Modello	N°Serie/Matricola
Fonometro	LARSON DAVIS	L&D 824 SLM	3293
Microfono	LARSON DAVIS	L&D 2541	8119
Preamplificatore Mic		L&D PRM902	3495

Il Responsabile del Centro
Head of the Centre

Caglio Emilio



SIT

SERVIZIO DI TARATURA IN ITALIA
Italian Calibration Service



CENTRO DI TARATURA 163

Calibration Centre



Spectra Srl
Laboratorio Certificazioni

via F. Gilera, 110
Arcore (MI) - Italia

Tel.: 039 613321

Fax: 039 6133235

spectra@spectra.it

www.Spectra.it

ESTRATTO DEL CERTIFICATO DI TARATURA N. 2172

Extract of Calibration Certificate No. 2172

Data di Emissione **2006/12/21**
Date of Issue
Destinatario **DB Project**
Addressee

**Via Giovanni XXXIII^o, 26/a
Madone**

Condizioni ambientali durante la misura
Environmental parameters during measurements

Pressione **1009,6 hPa**
Temperatura **22,3 °C**
Umidità Relativa **39,6 %**

Strumenti sottoposti a verifica

Instrumentation under test

Strumento	Costruttore	Modello	N°Serie/Matricola
Calibratore	LARSON DAVIS	L&D CAL 200	0427

Il Responsabile del Centro
Head of the Centre

Caglio Emilio

