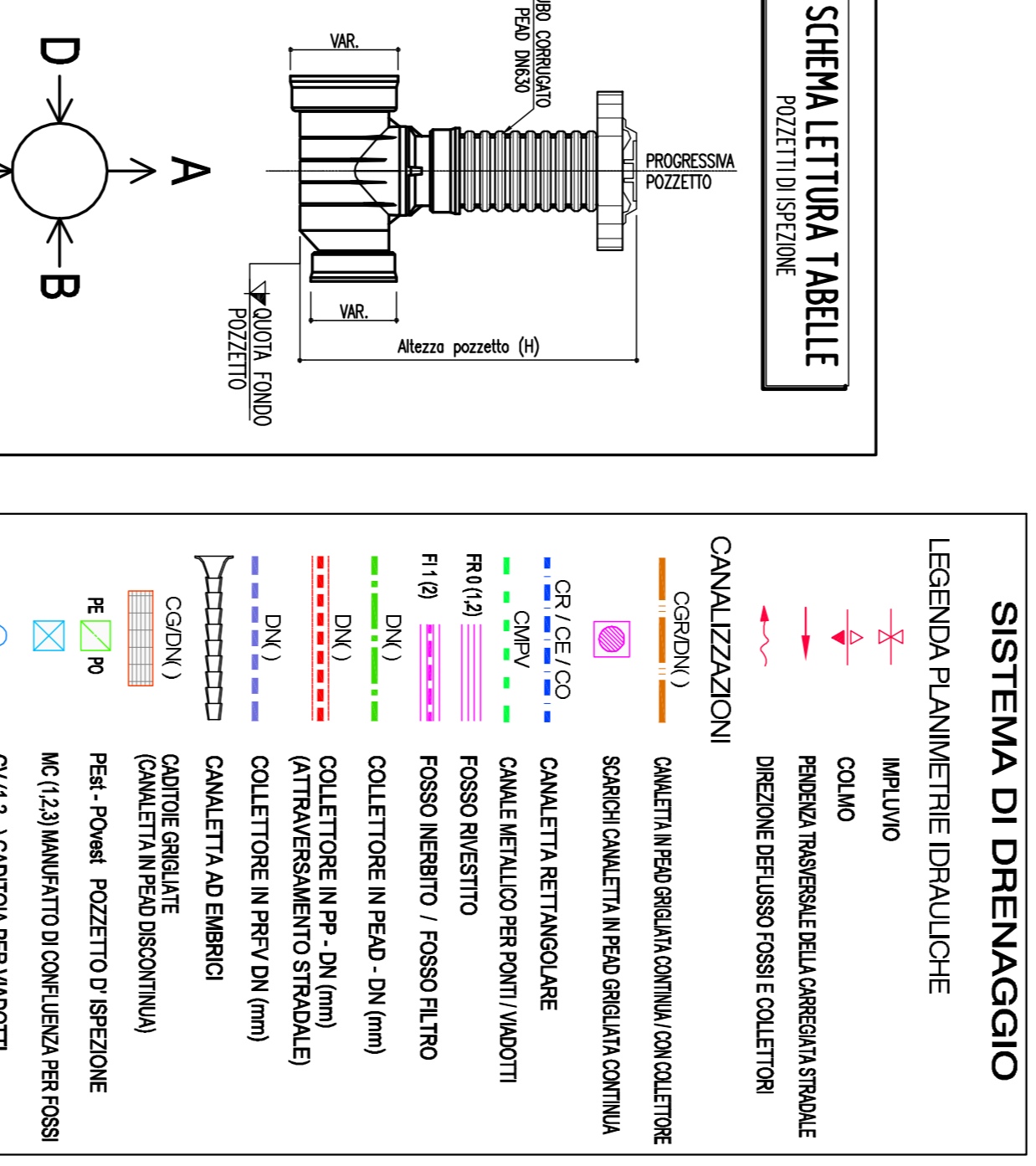
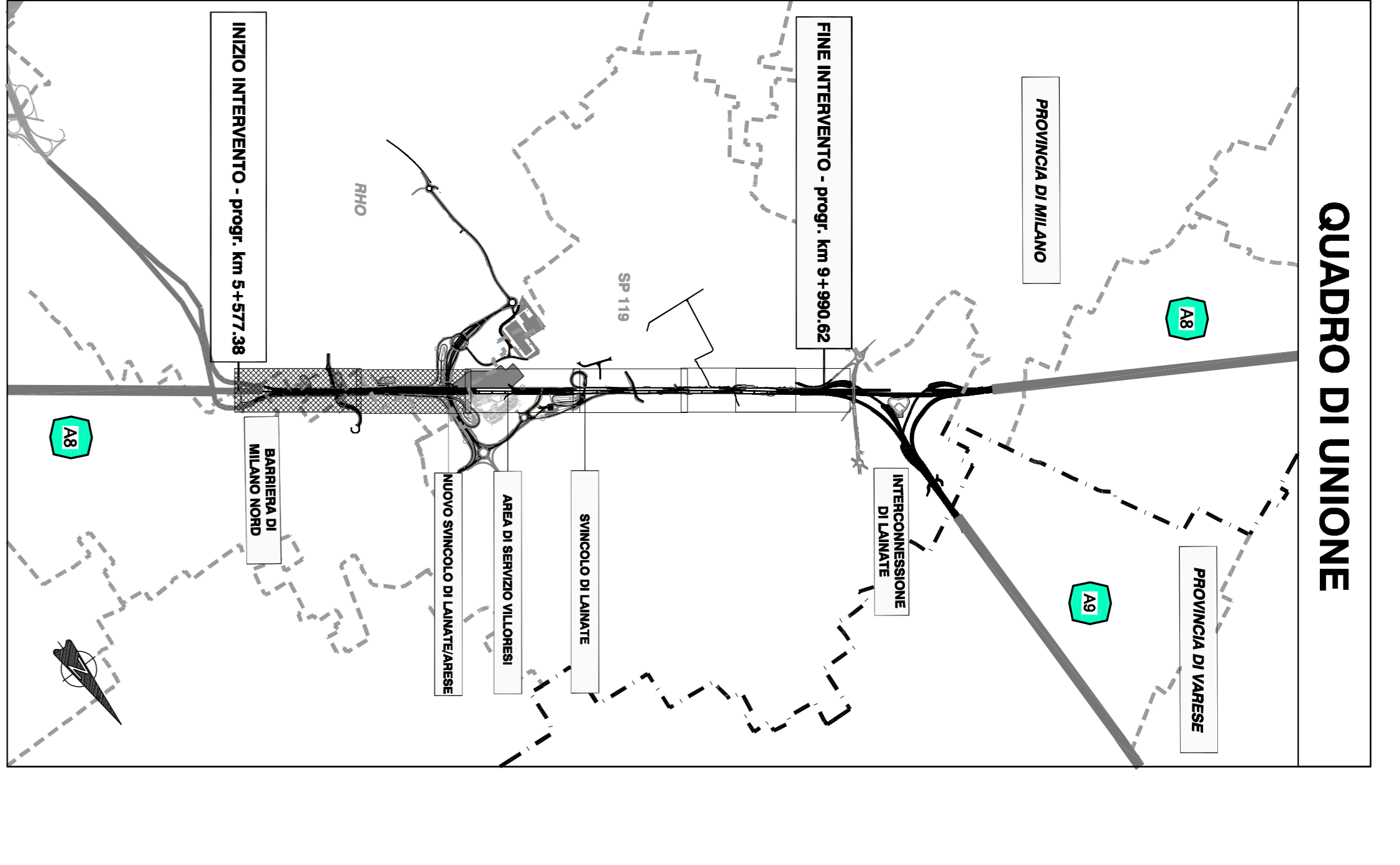
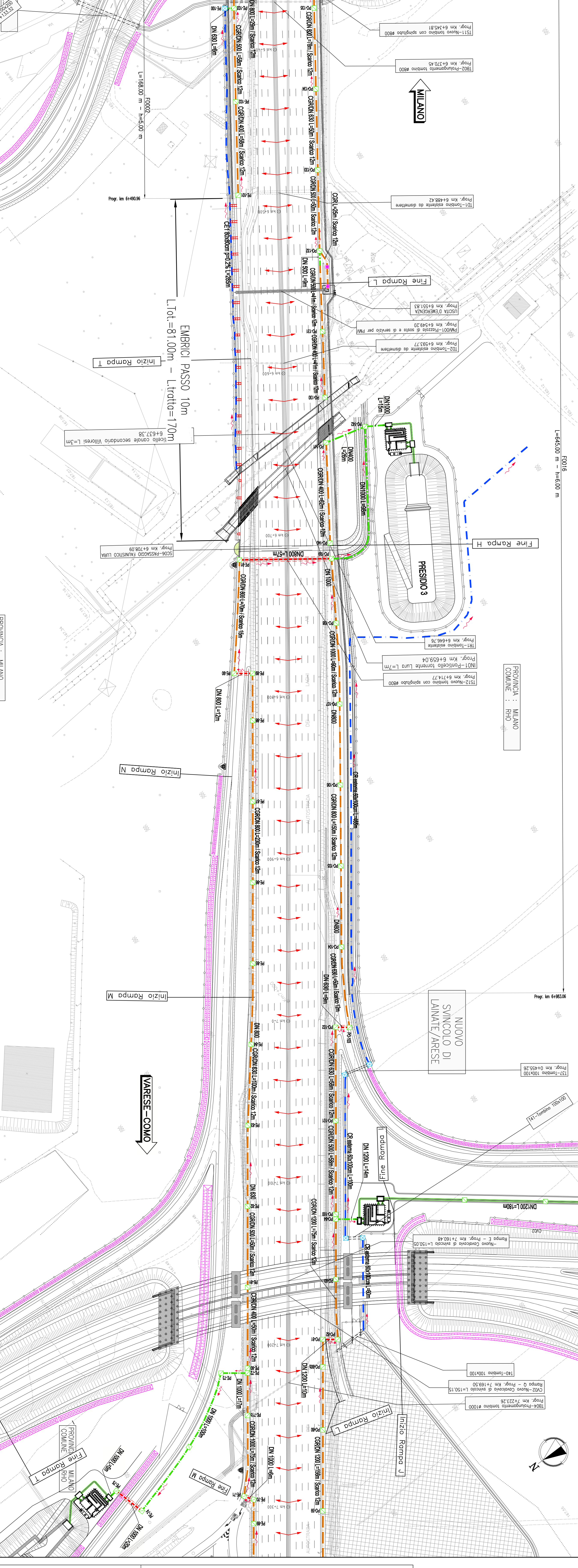
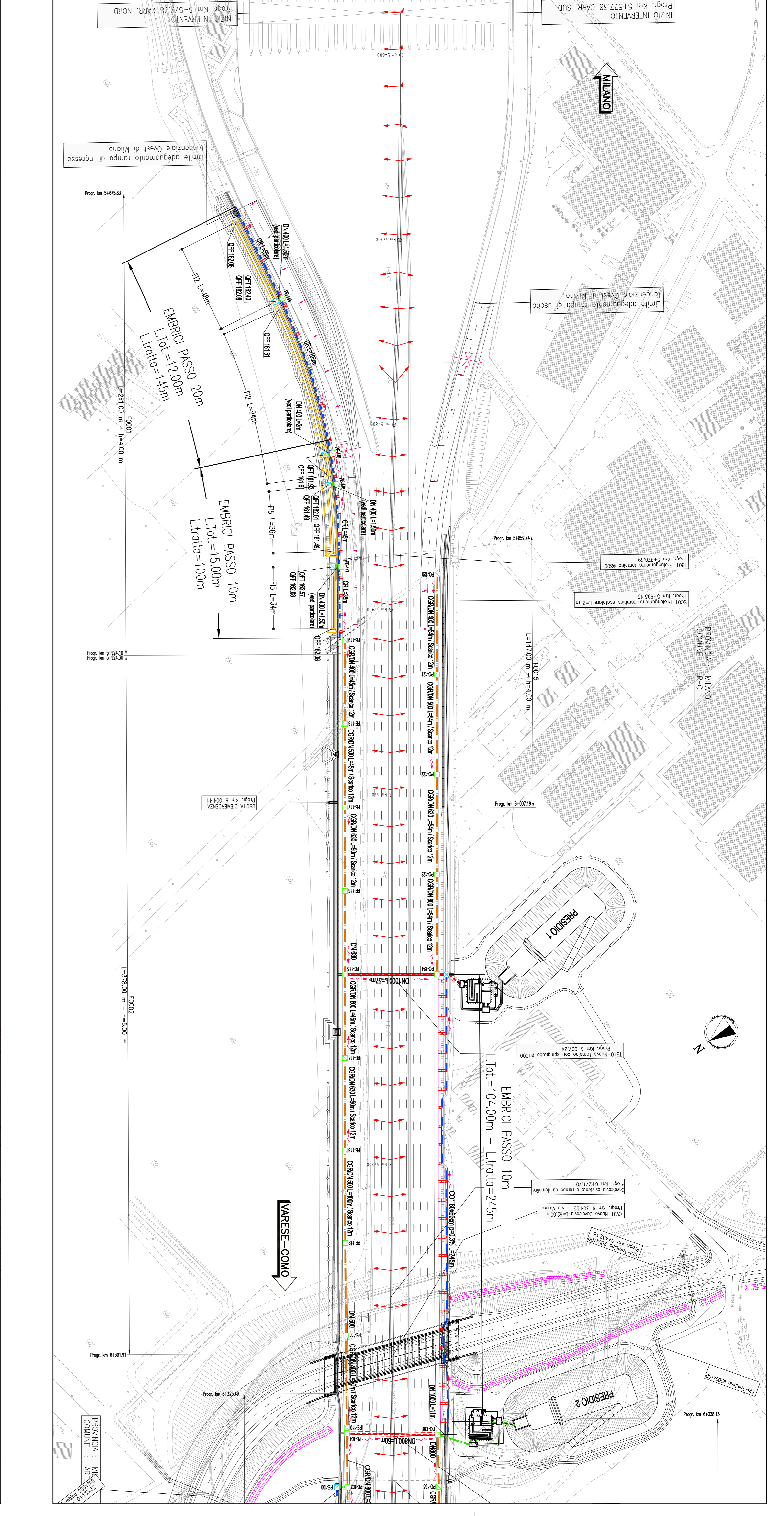


Nome Posizione	Progressiva	Quota A	Quota B	Quota C	Quota D	Altezza (m)
P908	7211.900	108.81	108.81	108.81	108.81	2.68
P909	7261.900	108.33	108.33	108.33	108.33	2.48
P910	7293.900	108.24	108.24	108.24	108.24	2.48
P911	7293.900	108.24	108.24	108.24	108.24	2.48
P912	7293.900	108.24	108.24	108.24	108.24	2.48
P913	7293.900	108.24	108.24	108.24	108.24	2.48
P914	7293.900	108.24	108.24	108.24	108.24	2.48
P915	7293.900	108.24	108.24	108.24	108.24	2.48
P916	7293.900	108.24	108.24	108.24	108.24	2.48
P917	7293.900	108.24	108.24	108.24	108.24	2.48
P918	7293.900	108.24	108.24	108.24	108.24	2.48
P919	7293.900	108.24	108.24	108.24	108.24	2.48
P920	7293.900	108.24	108.24	108.24	108.24	2.48
P921	7293.900	108.24	108.24	108.24	108.24	2.48
P922	7293.900	108.24	108.24	108.24	108.24	2.48
P923	7293.900	108.24	108.24	108.24	108.24	2.48
P924	7293.900	108.24	108.24	108.24	108.24	2.48
P925	7293.900	108.24	108.24	108.24	108.24	2.48
P926	7293.900	108.24	108.24	108.24	108.24	2.48
P927	7293.900	108.24	108.24	108.24	108.24	2.48
P928	7293.900	108.24	108.24	108.24	108.24	2.48
P929	7293.900	108.24	108.24	108.24	108.24	2.48
P930	7293.900	108.24	108.24	108.24	108.24	2.48
P931	7293.900	108.24	108.24	108.24	108.24	2.48
P932	7293.900	108.24	108.24	108.24	108.24	2.48
P933	7293.900	108.24	108.24	108.24	108.24	2.48
P934	7293.900	108.24	108.24	108.24	108.24	2.48
P935	7293.900	108.24	108.24	108.24	108.24	2.48
P936	7293.900	108.24	108.24	108.24	108.24	2.48
P937	7293.900	108.24	108.24	108.24	108.24	2.48
P938	7293.900	108.24	108.24	108.24	108.24	2.48
P939	7293.900	108.24	108.24	108.24	108.24	2.48
P940	7293.900	108.24	108.24	108.24	108.24	2.48
P941	7293.900	108.24	108.24	108.24	108.24	2.48
P942	7293.900	108.24	108.24	108.24	108.24	2.48
P943	7293.900	108.24	108.24	108.24	108.24	2.48
P944	7293.900	108.24	108.24	108.24	108.24	2.48
P945	7293.900	108.24	108.24	108.24	108.24	2.48
P946	7293.900	108.24	108.24	108.24	108.24	2.48
P947	7293.900	108.24	108.24	108.24	108.24	2.48
P948	7293.900	108.24	108.24	108.24	108.24	2.48
P949	7293.900	108.24	108.24	108.24	108.24	2.48
P950	7293.900	108.24	108.24	108.24	108.24	2.48



autostrade // per l'Italia
AUTOSTRADA (As) : MILANO LAGHI
 AMPLIAMENTO ALLA QUINTA CORSIA
TRATTO: BARRIERA MI-NORD - INTERCONNESSIONE DI LANATE
PROGETTO ESECUTIVO
CORPO AUTOSTRADALE
 IDROLOGIA IDRALLICA
 Sistema di drenaggio corpo autostradale
 Planimetria idraulica di progetto
 da Prog km 5+577.38 di km 7+302.38

SPER **110809011DR0011-1**

11/08/2013
 11/08/2013
 11/08/2013

AUTOSTRADE
 11/08/2013