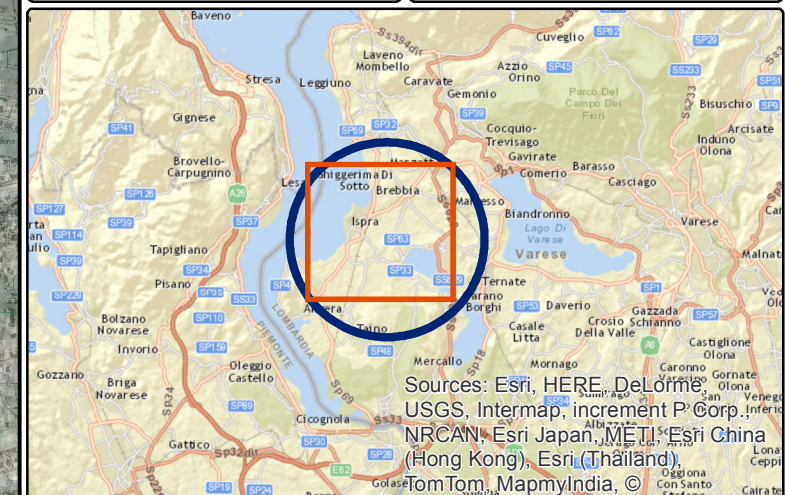
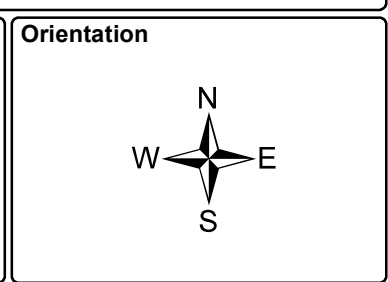
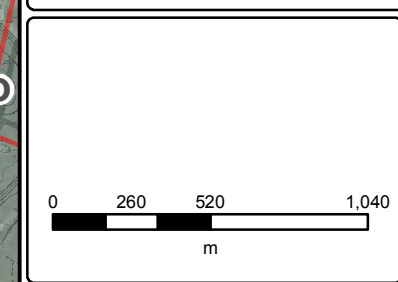


Legenda

- Reattore Essor INE
- Area del sito del JRC (CCR)
- Confine Comunale



Project Studio di Prefattibilità Ambientale: Decommissioning Complesso INE		
Map Inquadramento territoriale		
Author DAI	Reviser LGA	Approved PBE
Date Agosto 2014	Format A3	
Map number 03	Rev 1	Scale 1:25,000

Sources: Esri, HERE, DeLorme, USGS, Intermap, increment P Corp., NRCAN, Esri Japan, METI, Esri China (Hong Kong), Esri (Thailand), TomTom, MapmyIndia, © OpenStreetMap contributors, and the GIS User Community