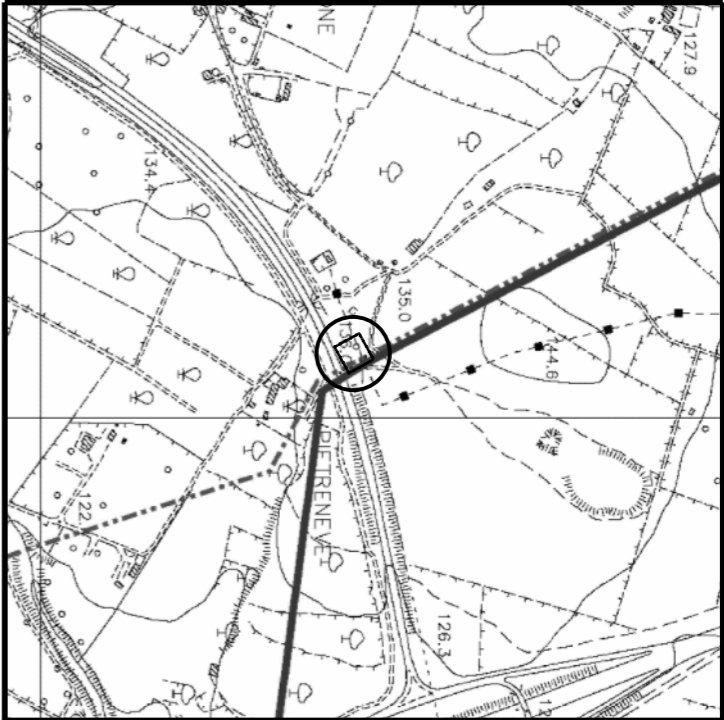




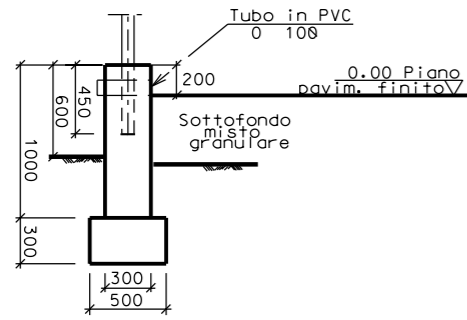


DOCUMENTI DI RIFERIMENTO	N.

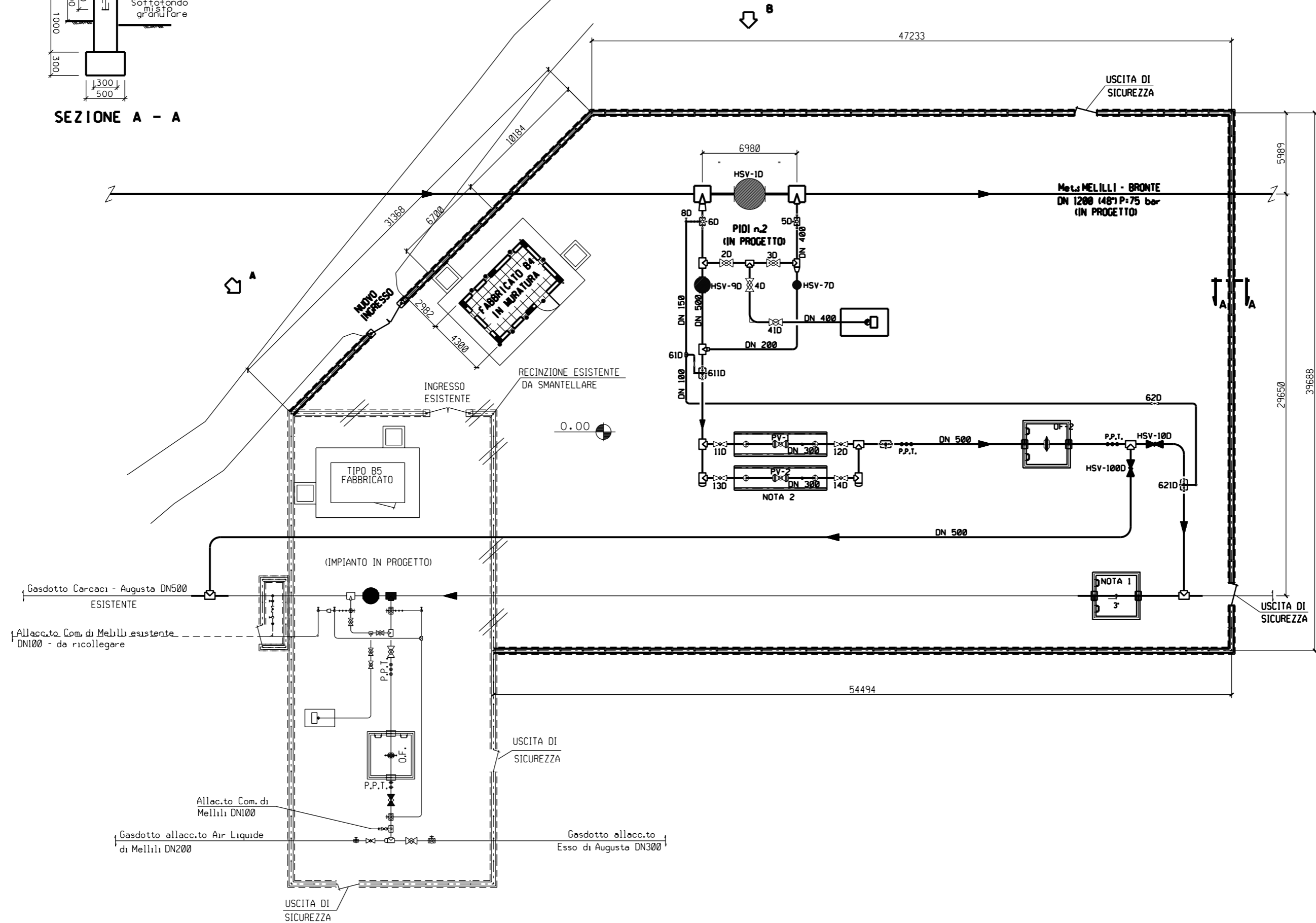


MELILLI (SR) – CTR 646020
COROGRAFIA 1:10000

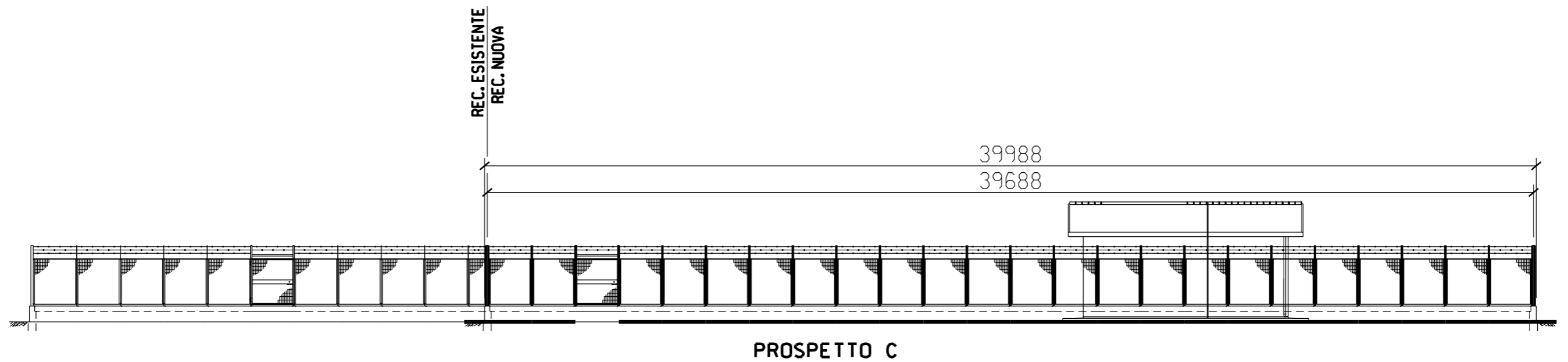
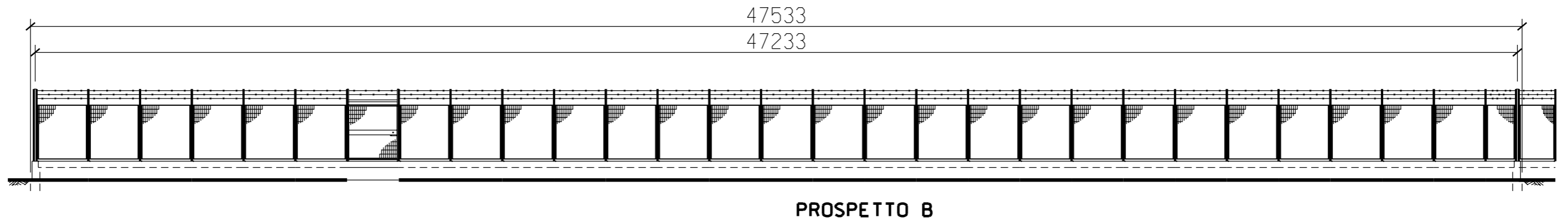
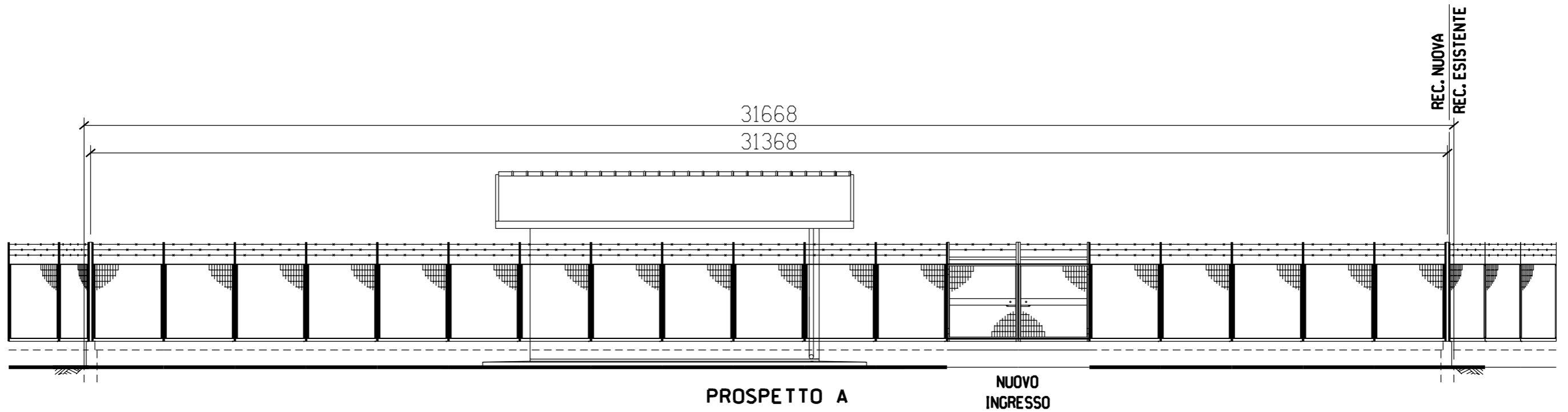
Ø	SETT.07	EMISSIONE	CSI	RICCI	CASATI
Rev.	DATA	DESCRIZIONE	ELABORATO	VERIFICATO	APPROVATO
		PROGETTISTA 			COMMESSA 668010
Metanodotto: MELILLI - BRONTE			UNITA' N. 10		
			DIS. N. LC-D-83361		
DN 1200 (48") - P=75 bar			REVISIONE 0		
PUNTO DI INTERCETTAZIONE DI DERIVAZIONE IMPORTANTE (PIDI) IMPIANTO n.2 Loc. PIETRE NERE			FG. 1	DI 3	SCALA



SEZIONE A - A



FUORI SCALA



FUORI SCALA