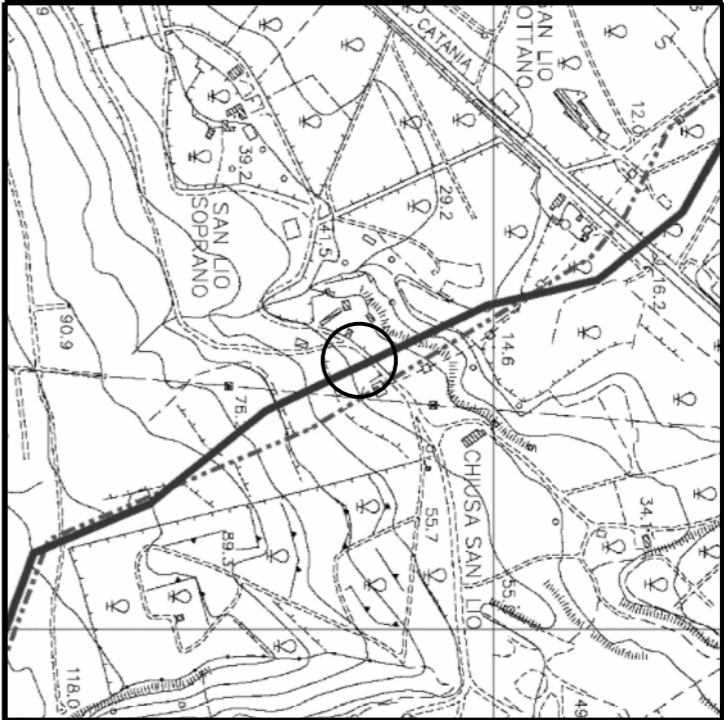


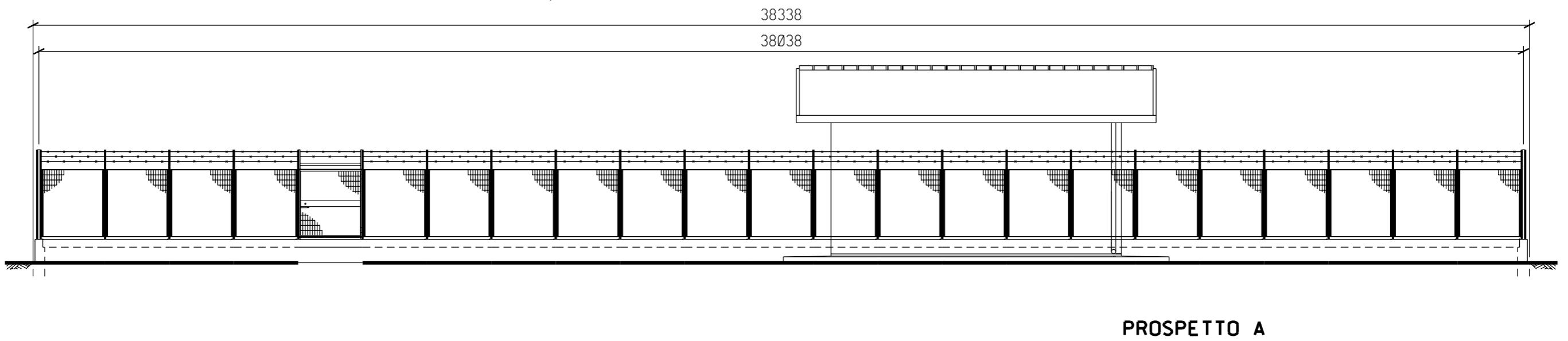
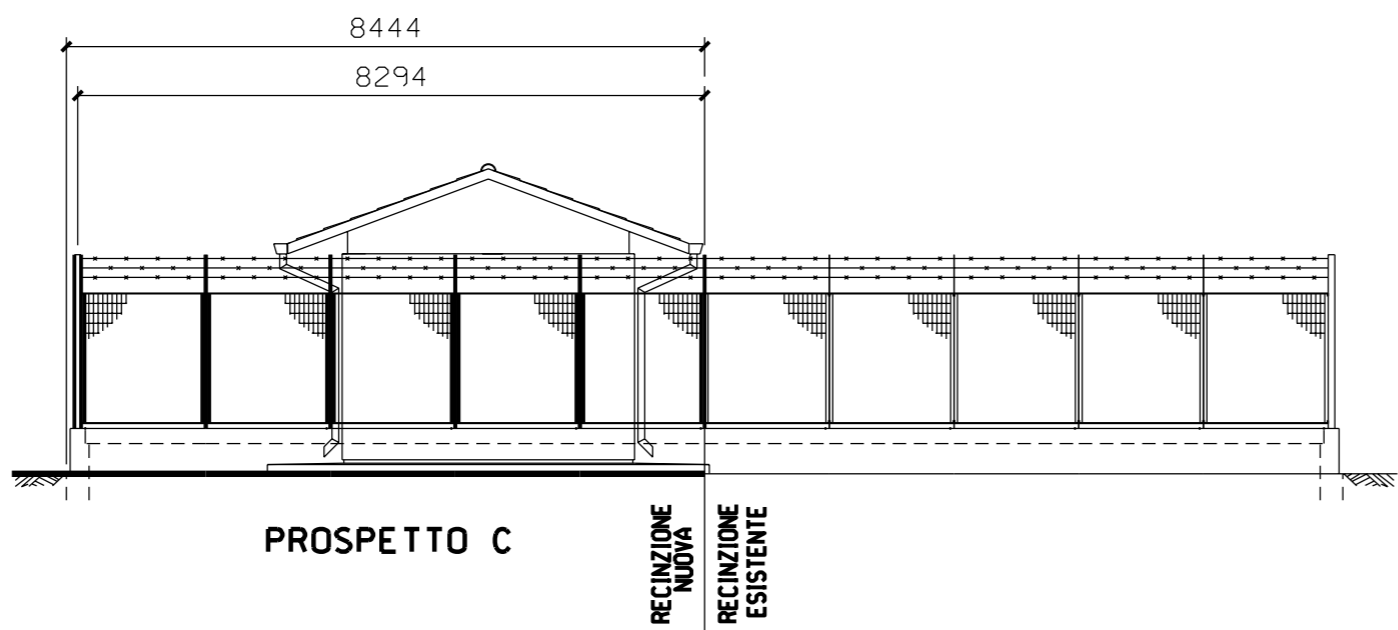
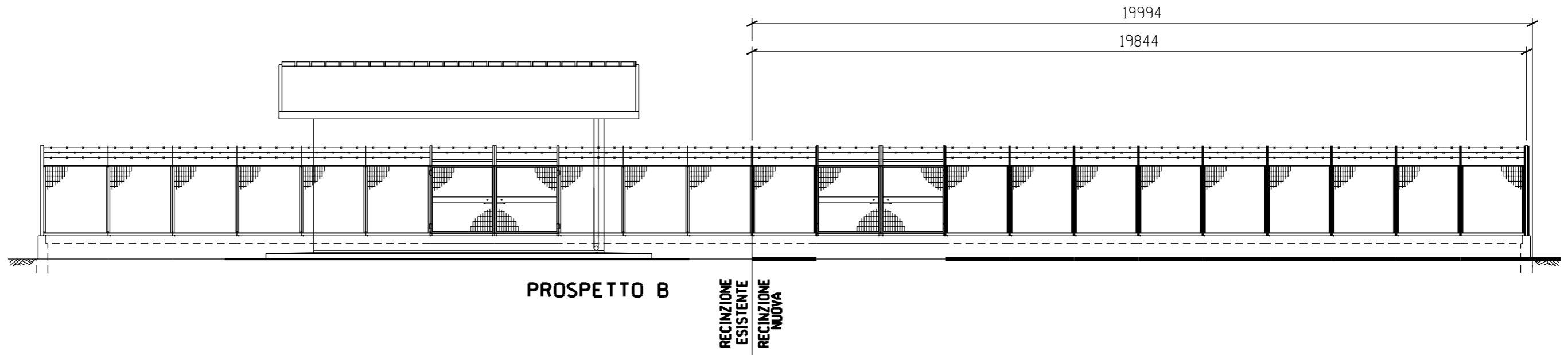


DOCUMENTI DI RIFERIMENTO	N.

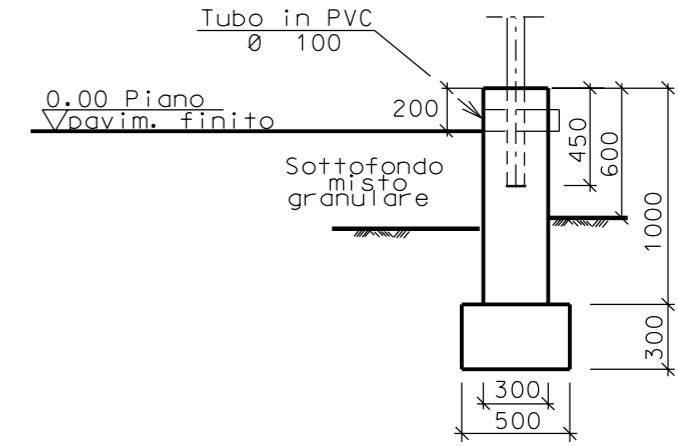
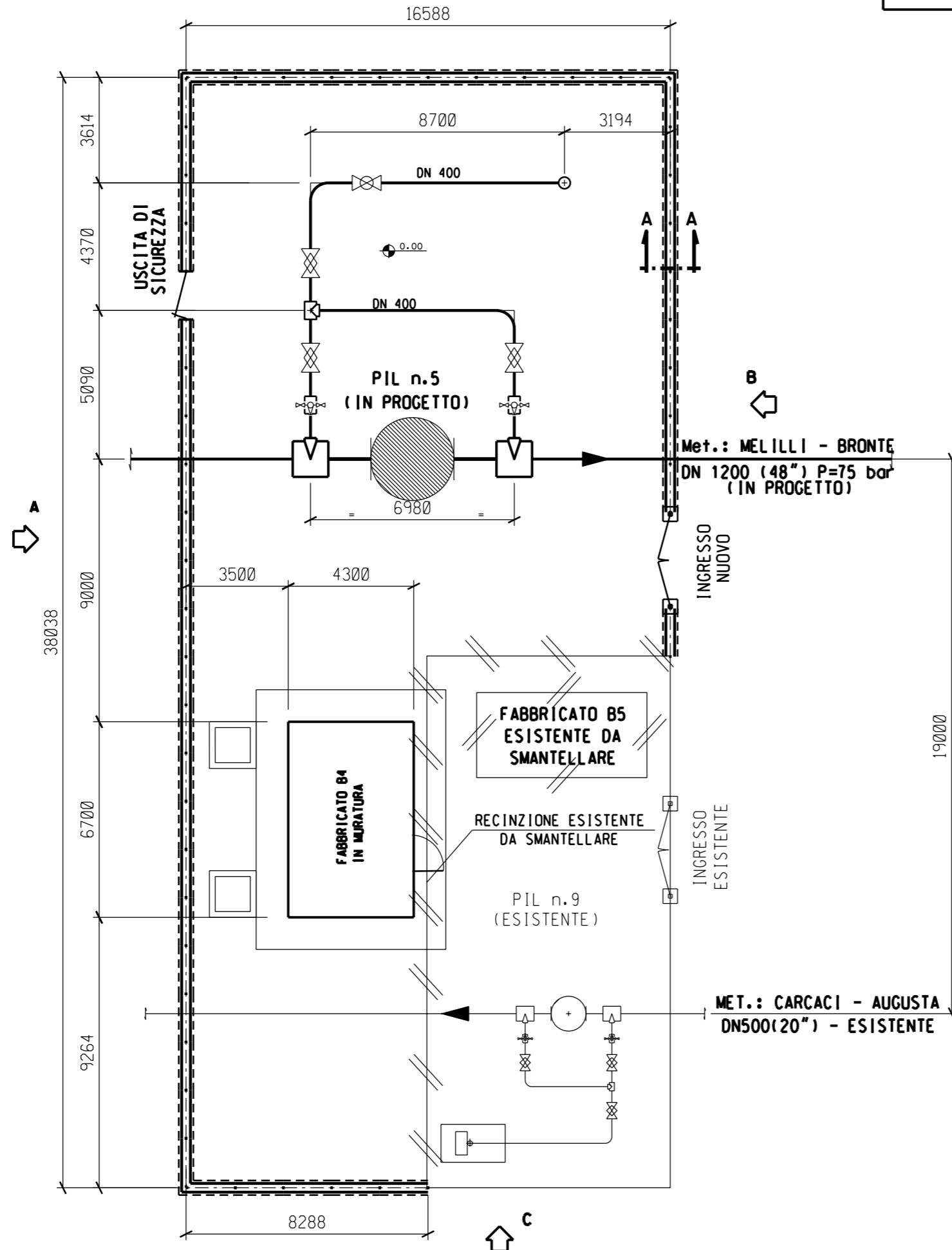


CARLENTINI (SR) – CTR 641050
COROGRAFIA 1:10000

Ø	SETT.07	EMISSIONE	CSI	RICCI	CASATI
Rev.	DATA	DESCRIZIONE	ELABORATO	VERIFICATO	APPROVATO
		 Snam Rete Gas	 Snamprogetti	COMMESSA 668010	UNITA' N. 10
Metanodotto: MELILLI - BRONTE DN 1200 (48") - P=75 bar			DIS. N. LC-D-83364		
			REVISIONE 0		
PUNTO DI INTERCETTAZIONE DI LINEA PIL n.5 Loc. CHIUSA SAN LIO			FG. 1 DI 3		
			SCALA		



FUORI SCALA



SEZIONE A - A

FUORI SCALA