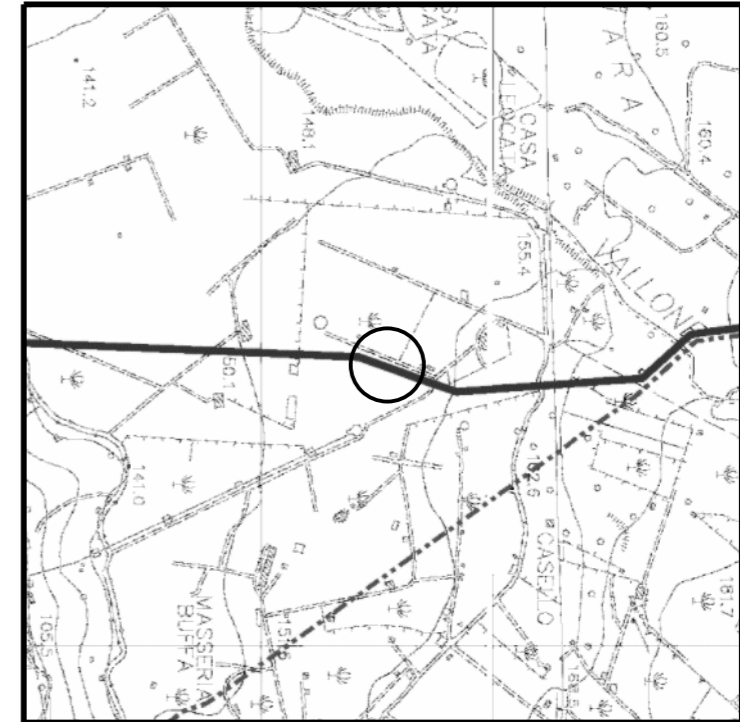



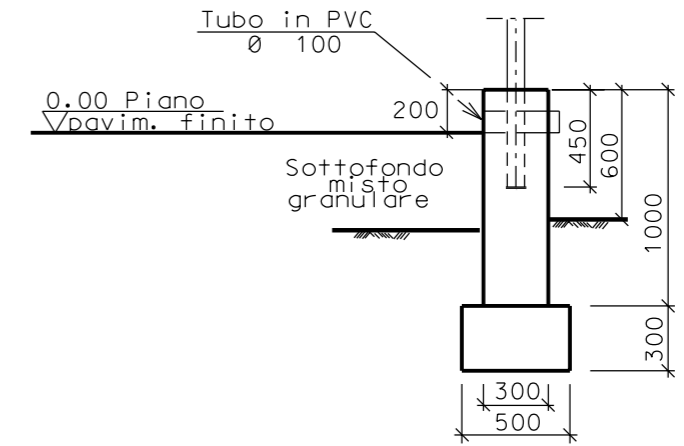
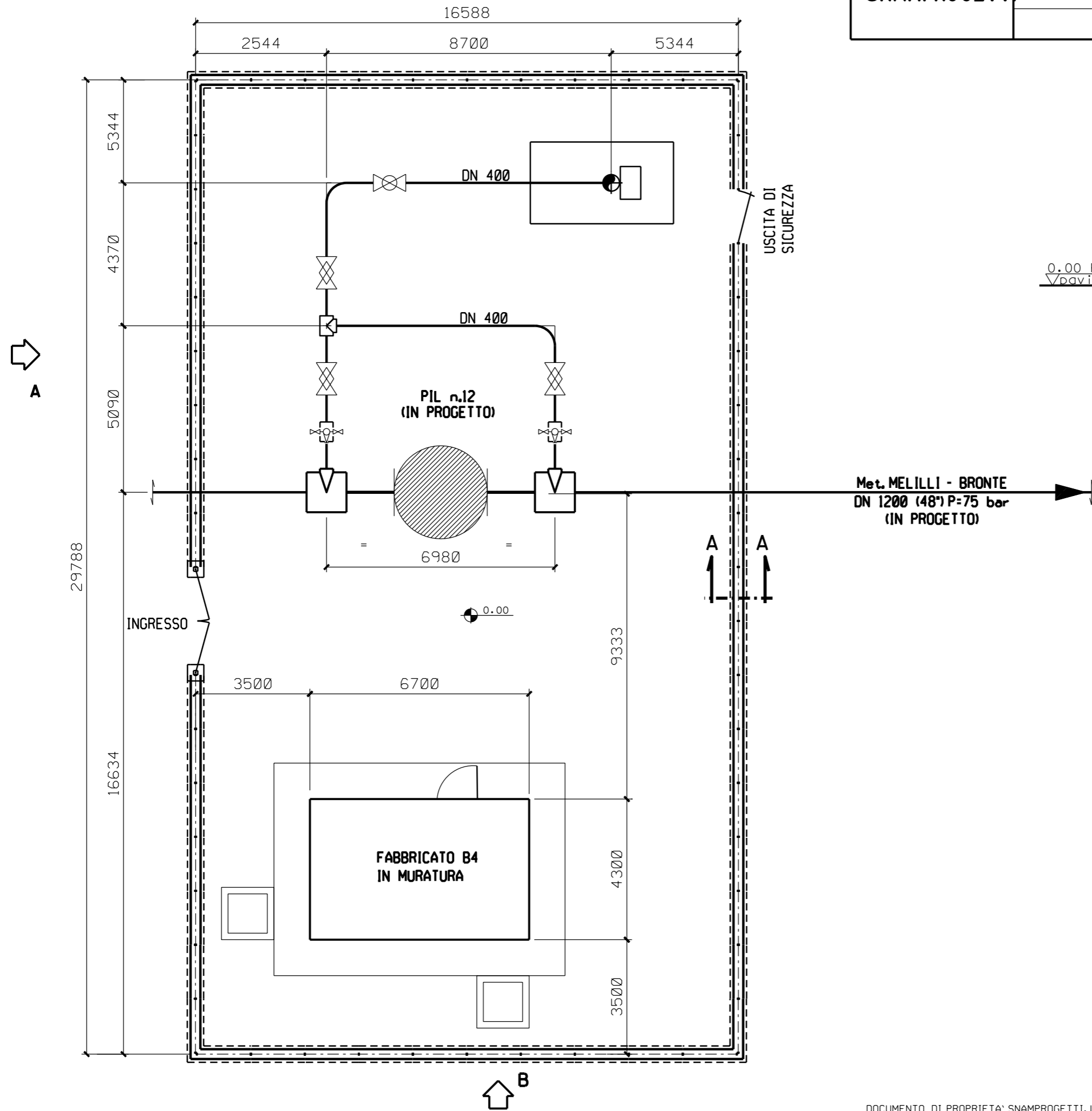


DOCUMENTI DI RIFERIMENTO	N.



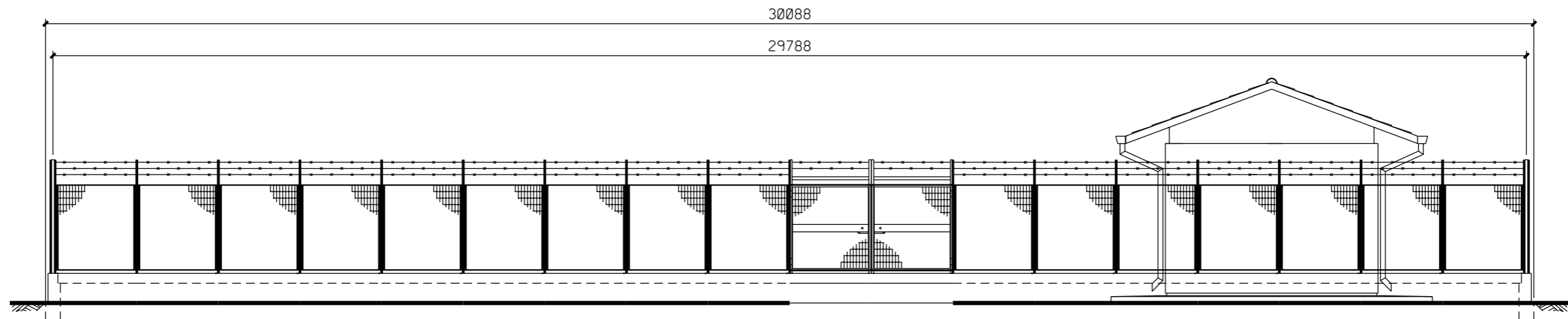
PATERNO' (CT) – CTR 633030–624150
COROGRAFIA 1:10000

Ø	SETT.07	EMISSIONE	CSI	RICCI	CASATI
Rev.	DATA	DESCRIZIONE	ELABORATO	VERIFICATO	APPROVATO
		PROGETTISTA  Snamprogetti	COMMESSA 668010	UNITA' N. 10	
Metanodotto: MELILLI - BRONTE DN 1200 (48") - P=75 bar			DIS. N. LC-D-83371		
			REVISIONE 0		
PUNTO DI INTERCETTAZIONE DI LINEA PIL n.12 Loc. MASSERIA BUFALA			FG. 1	DI 3	
			SCALA		

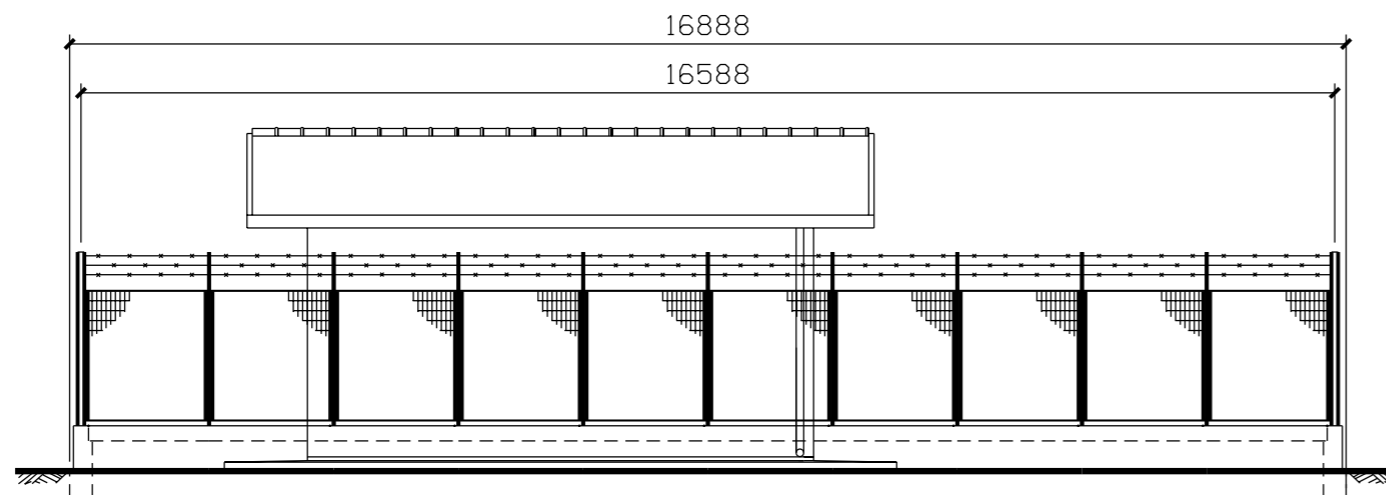


SEZIONE A - A

FUORI SCALA



PROSPETTO A



PROSPETTO B

FUORI SCALA