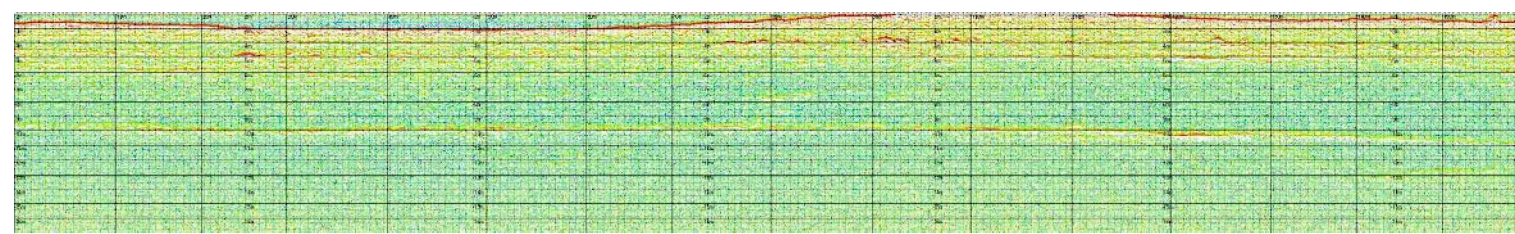
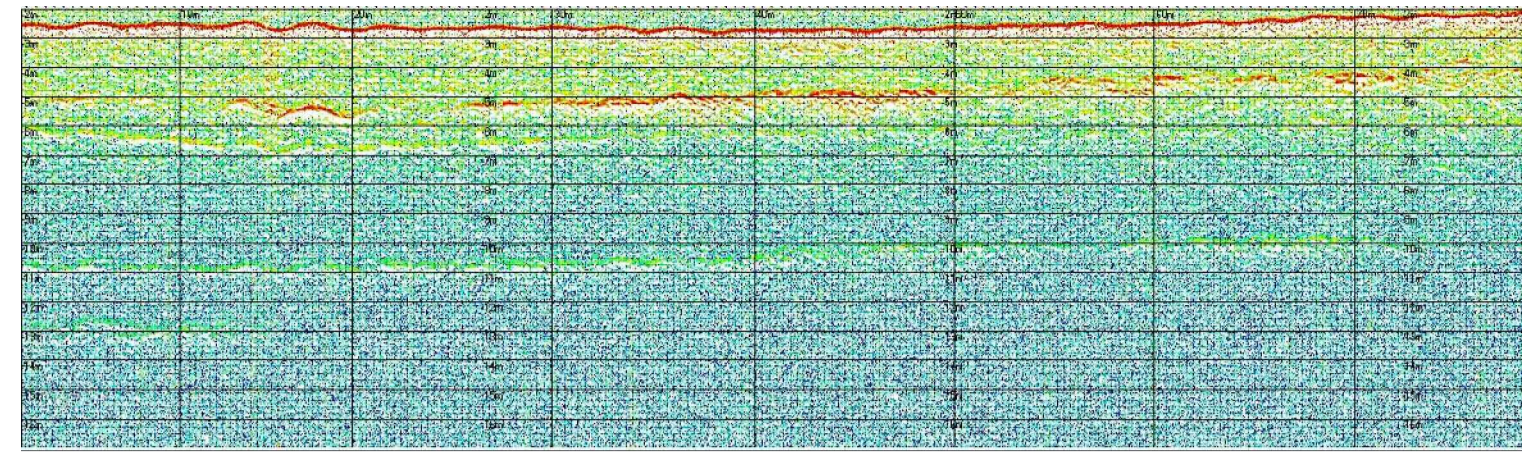


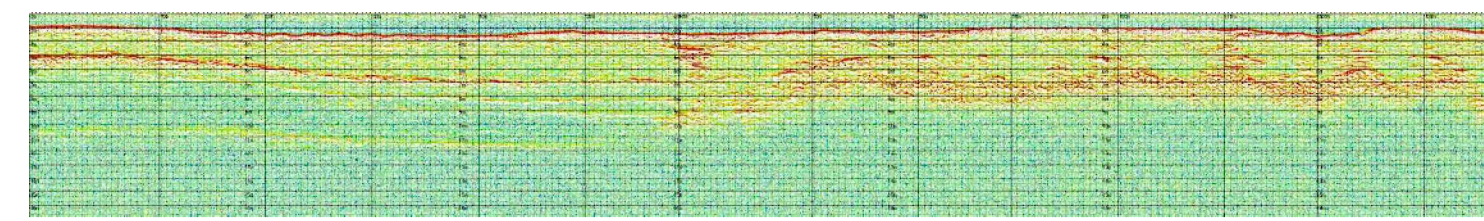
profilo sub-bottom 1



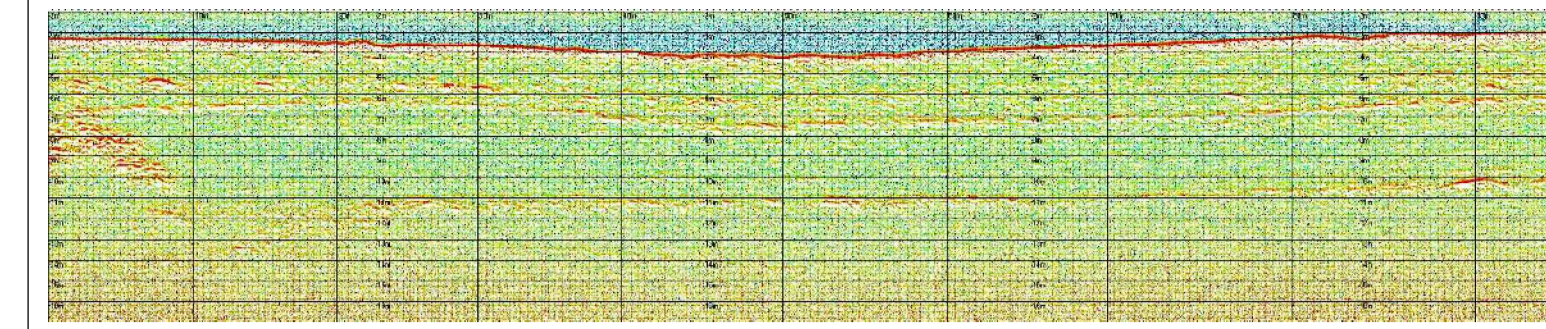
profilo sub-bottom 2



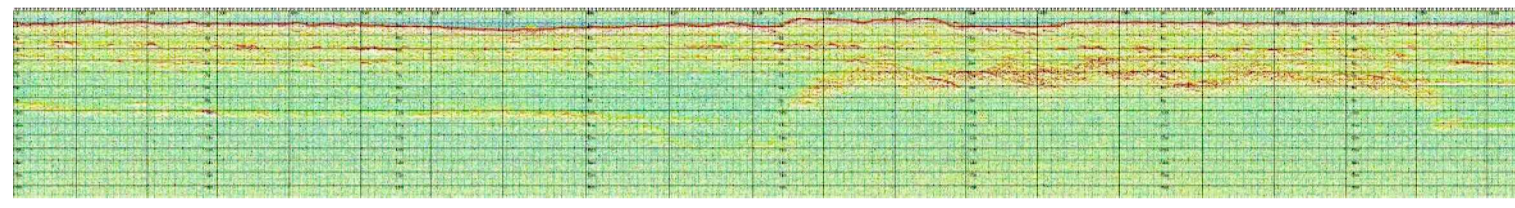
profilo sub-bottom 3



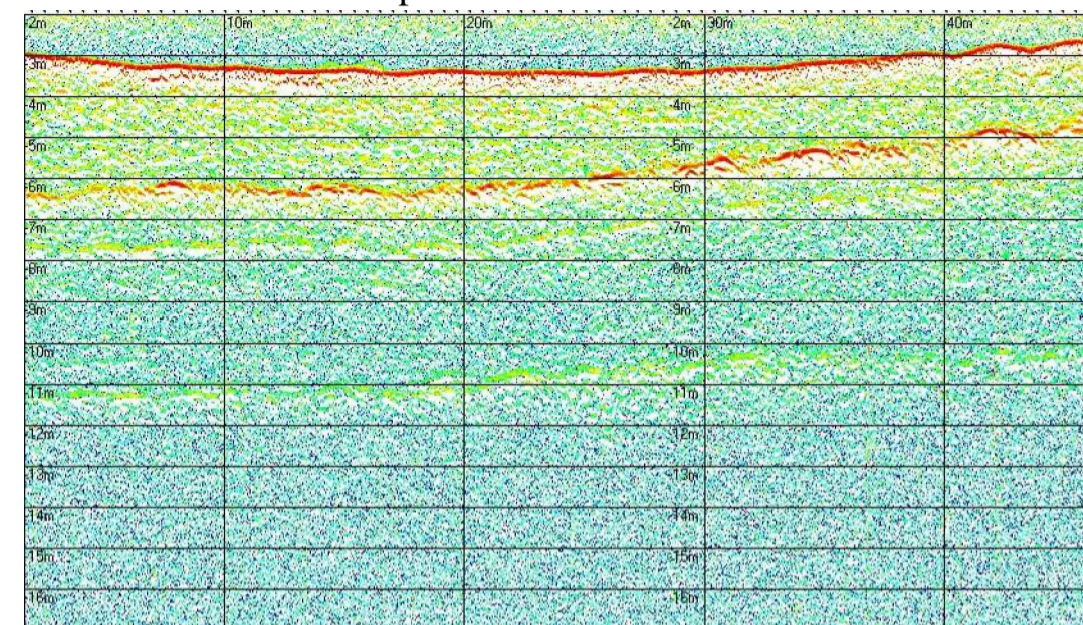
profilo sub-bottom 4



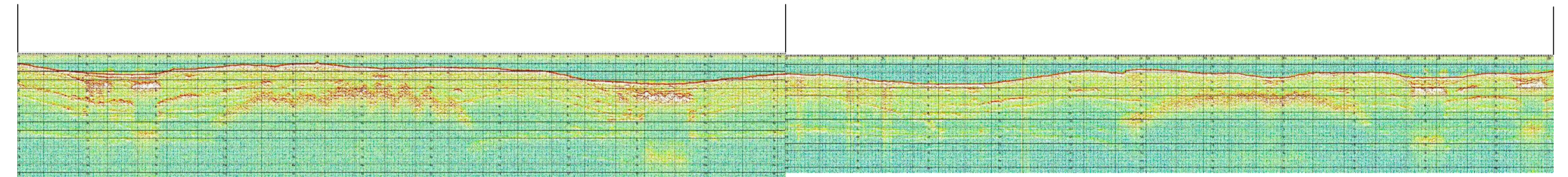
profilo sub-bottom 5



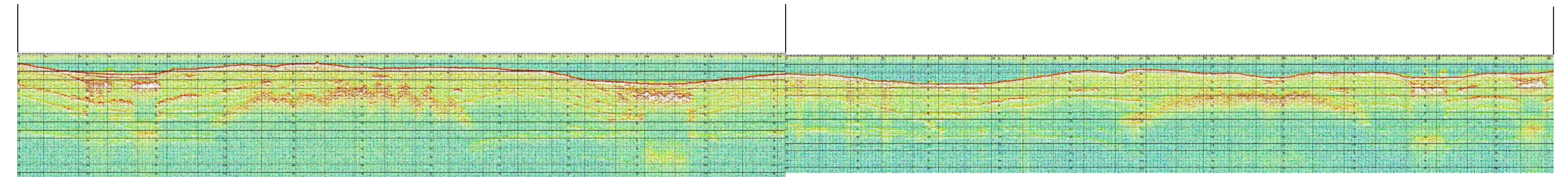
profilo sub-bottom 6



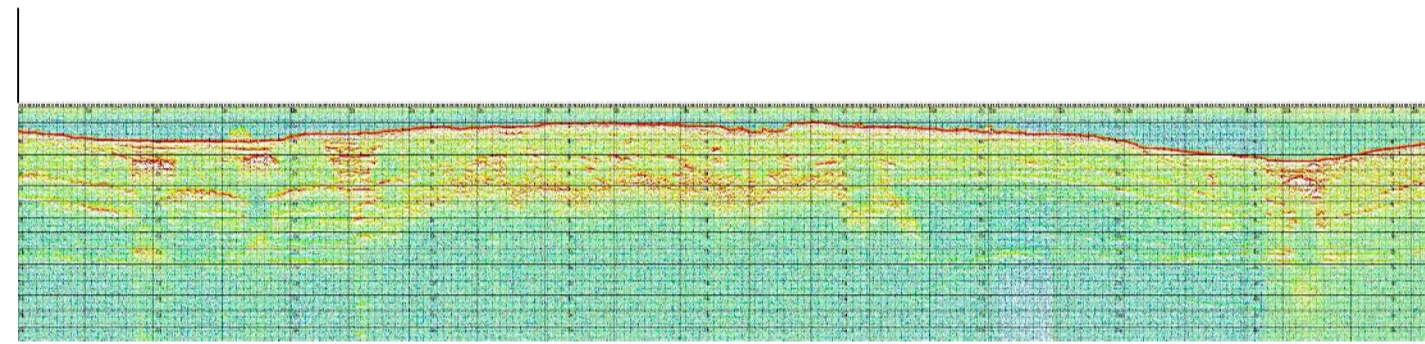
profilo sub-bottom 7



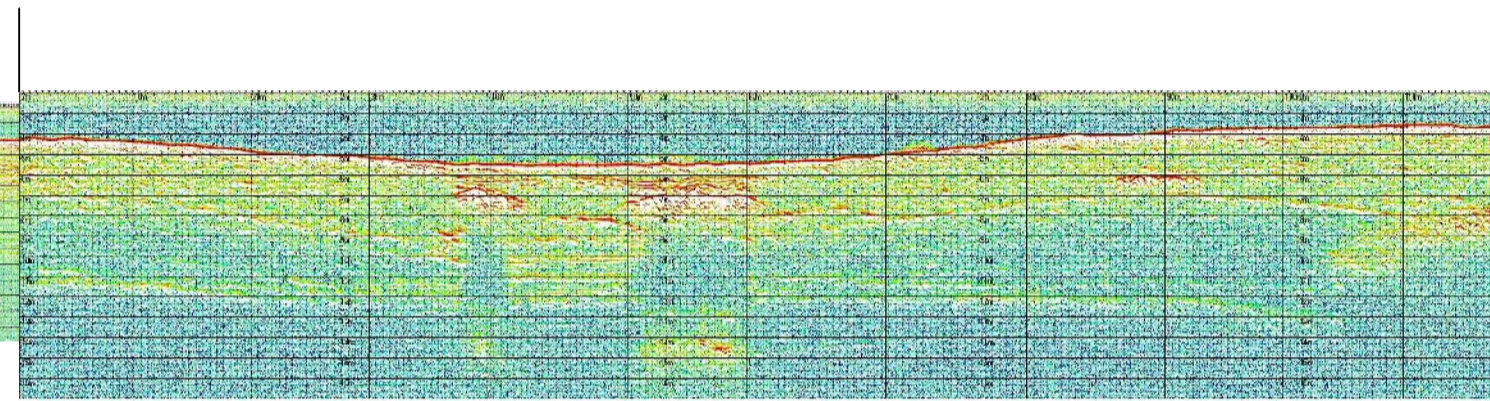
profilo sub-bottom 8



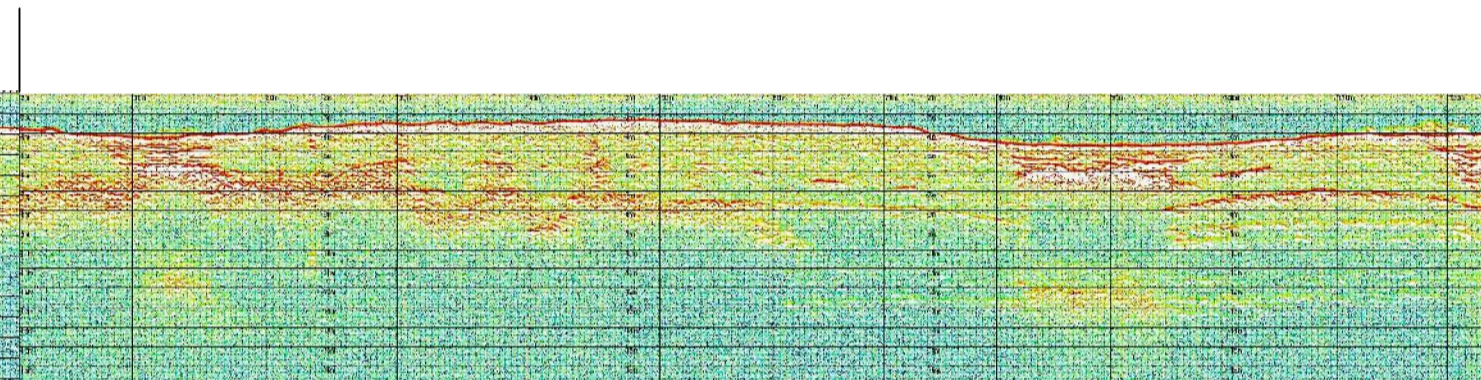
profilo sub-bottom 9



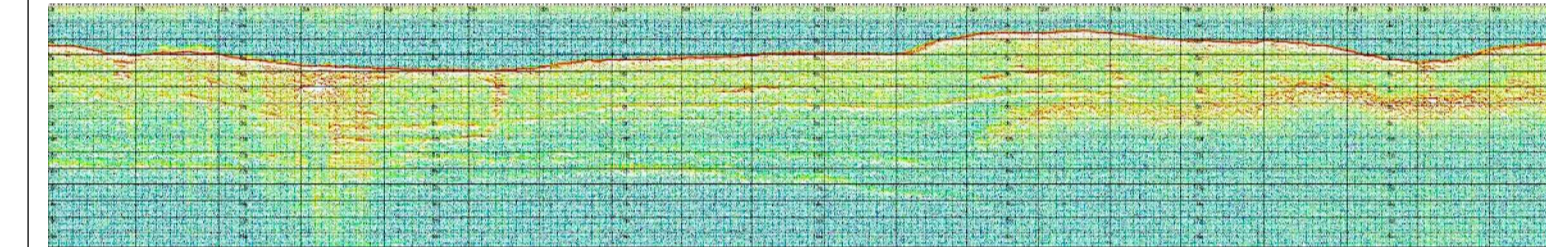
profilo sub-bottom 11



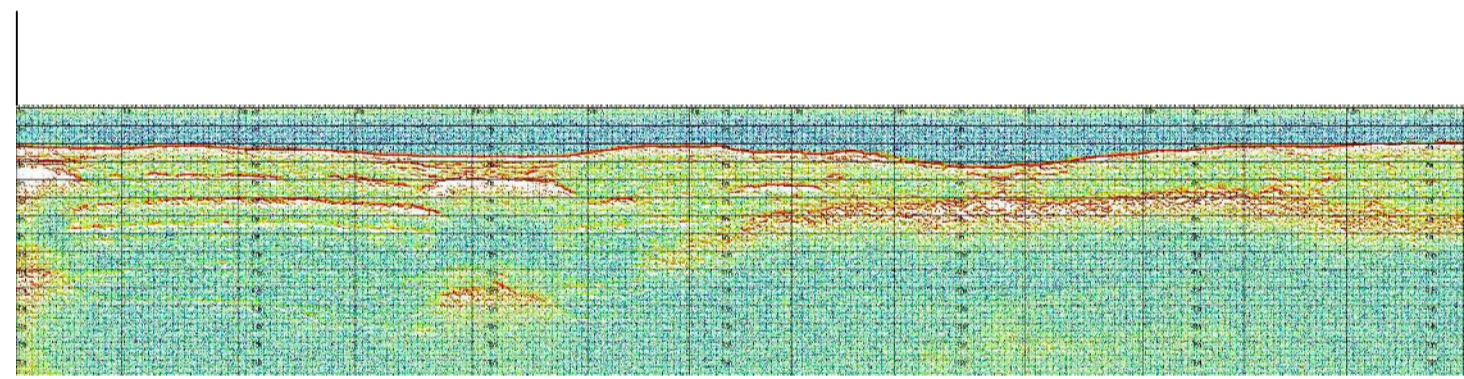
profilo sub-bottom 11



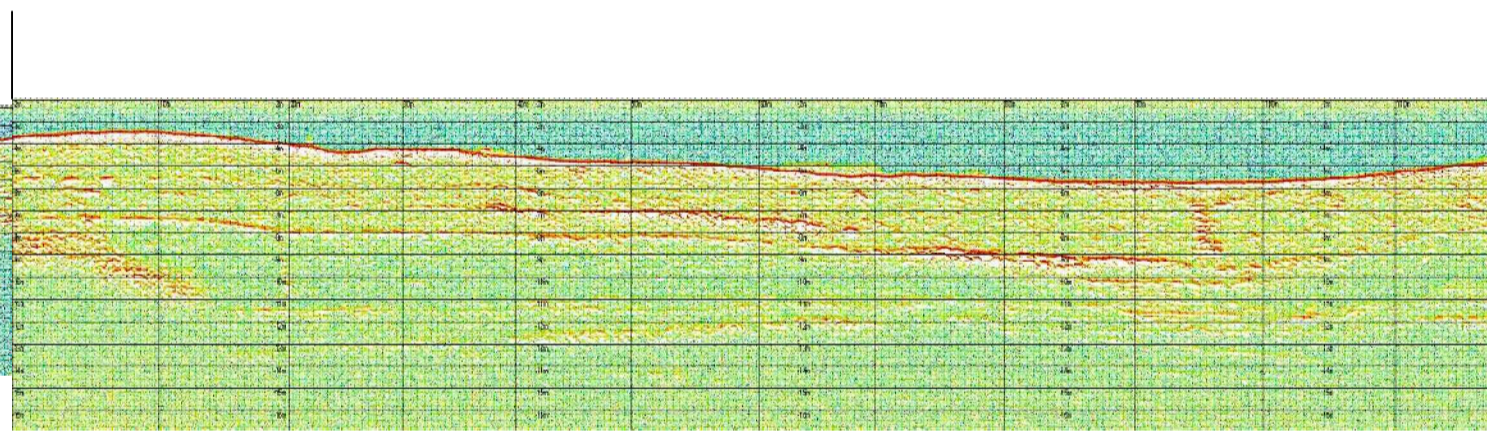
profilo sub-bottom 12



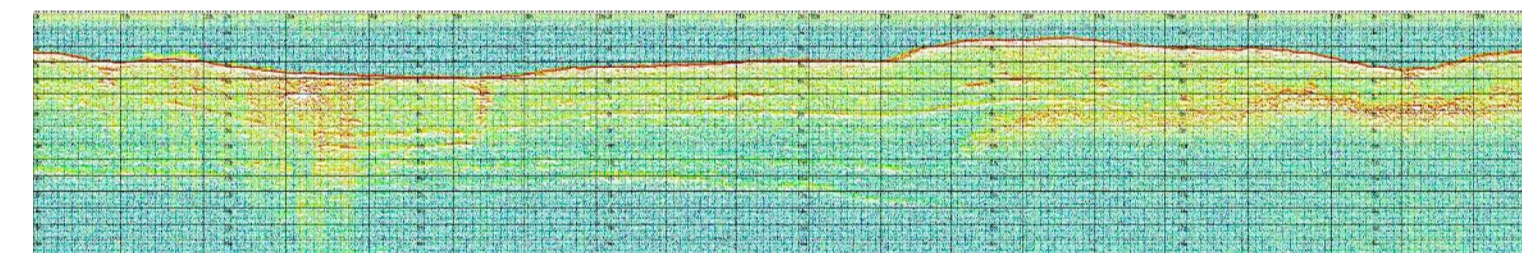
profilo sub-bottom 13



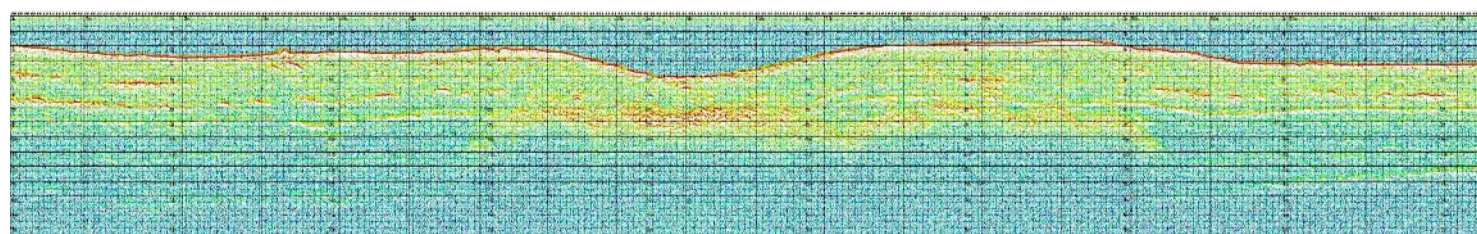
profilo sub-bottom 14



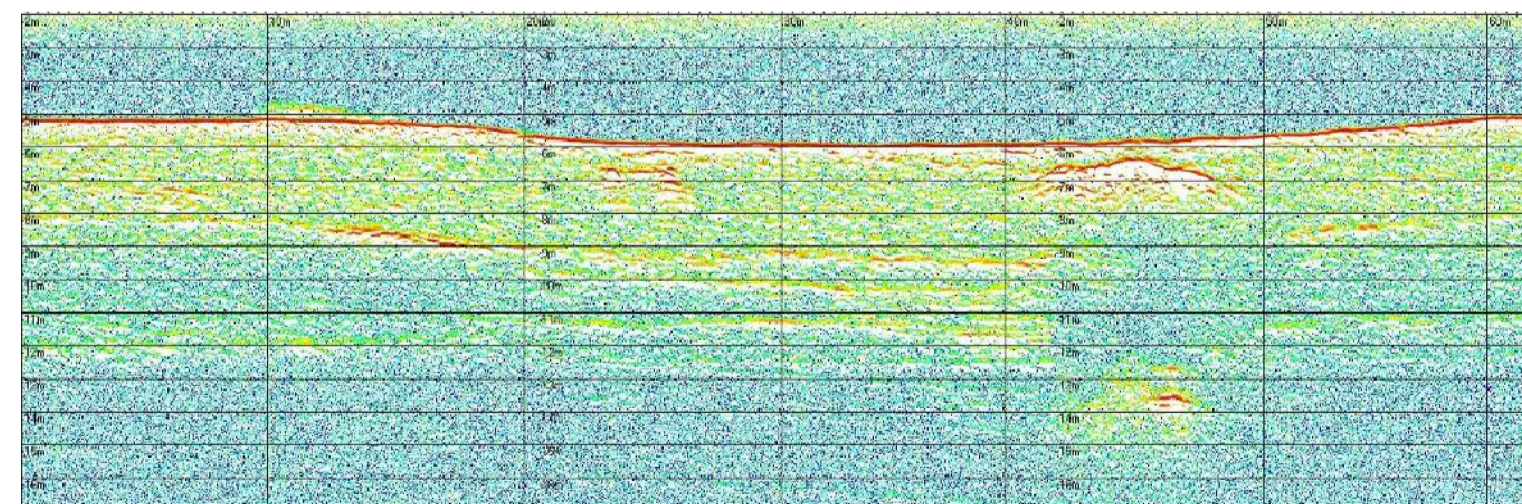
profilo sub-bottom 15



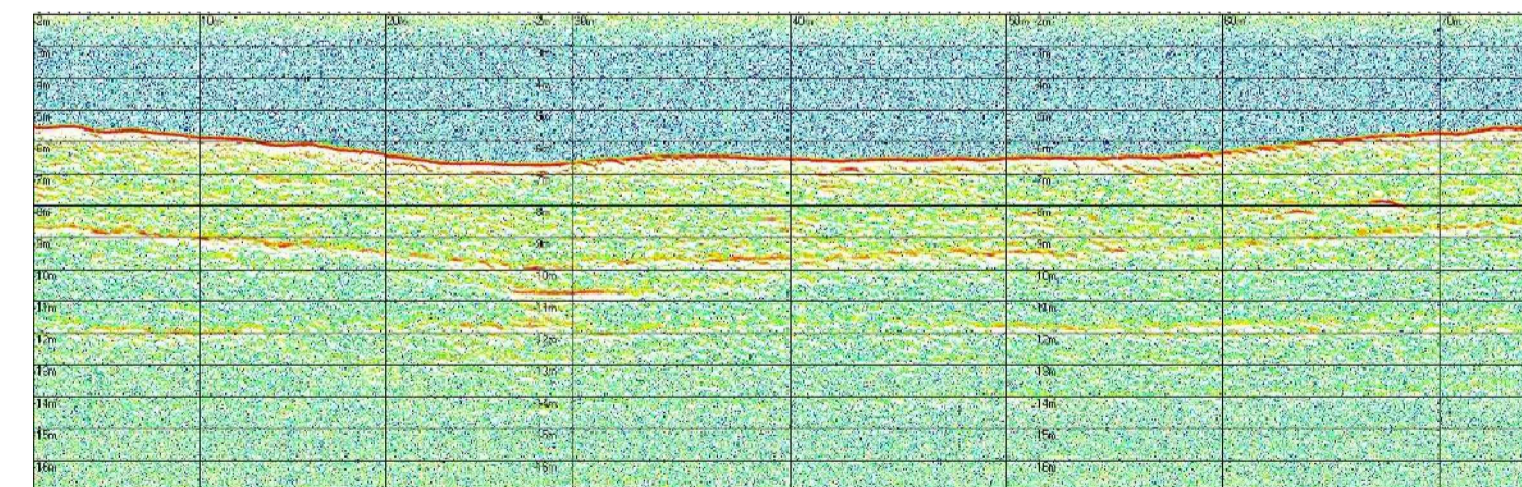
profilo sub-bottom 16



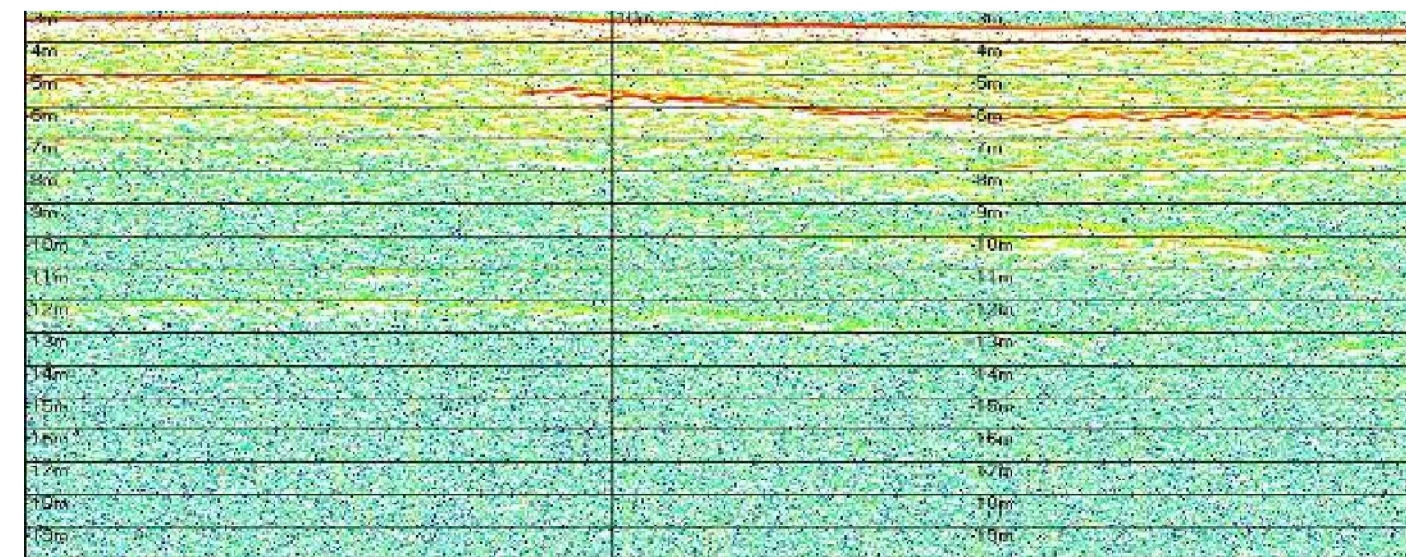
profilo sub-bottom 17



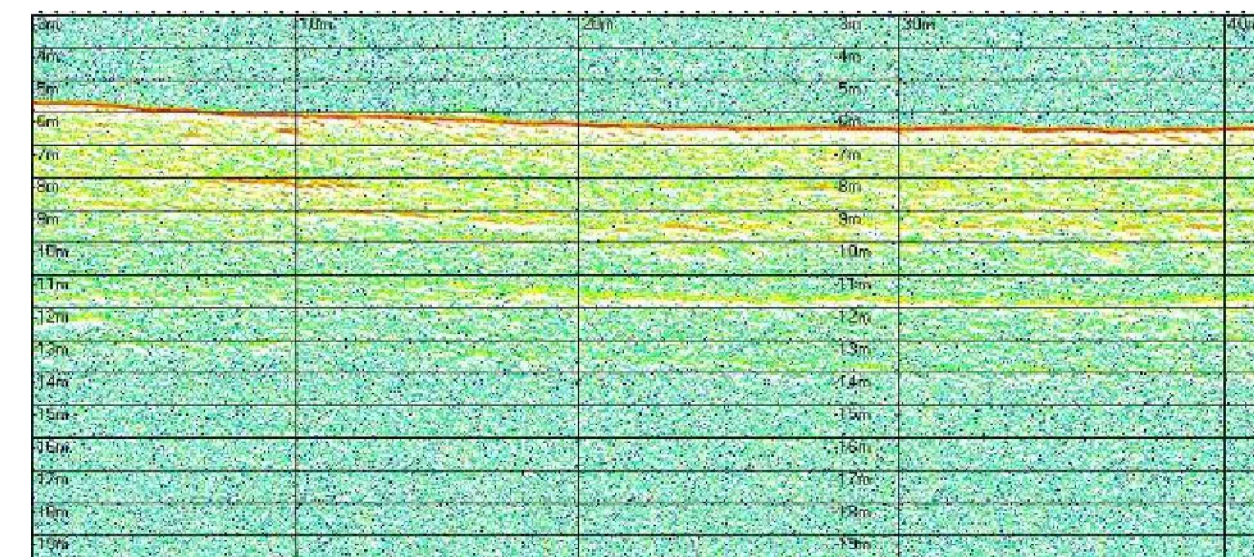
profilo sub-bottom 18



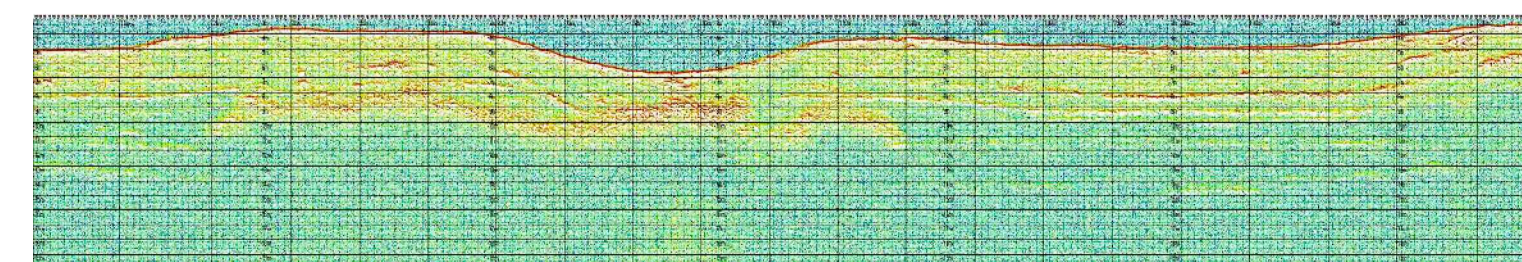
profilo sub-bottom 19



profilo sub-bottom 20



profilo sub-bottom 21



Autorità Portuale di Augusta

LAVORI DEL PRIMO STRALCIO E DEL SECONDO STRALCIO DELLA TERZA FASE DEL PORTO COMMERCIALE DI AUGUSTA - BANCHINE CONTAINERS -

IMPRESE:



Condotte S.p.A. Fondata il 7 aprile 1880



(MANDATARIA)

(MANDANTI)

PROGETTO ESECUTIVO DI FUSIONE ED INTEGRAZIONE DEL I E II STRALCIO

3						
2						
1						
0	081114	PRIMA EMISSIONE			P. PERCONTI	D. RIGIOLLOSO
REV.	DATA	EMISSIONE			RED.	VER.
	PROGETTO	OPERA	TIPO ELAB.	N° ELAB.	REV.	APPR.
	1073	IG00	T	006	A	
						SCALA: varie

TITOLO ELABORATO: INQUADRAMENTO GENERALE STUDI E RELAZIONI SPECIALISTICHE Rilievo Sub Bottom Profiler - profili - tav.1 di 9

PROGETTAZIONE:



(MANDATARIA)

(MANDANTE)

RESPONSABILE DEL PROCEDIMENTO: Geom. Venerando Toscano