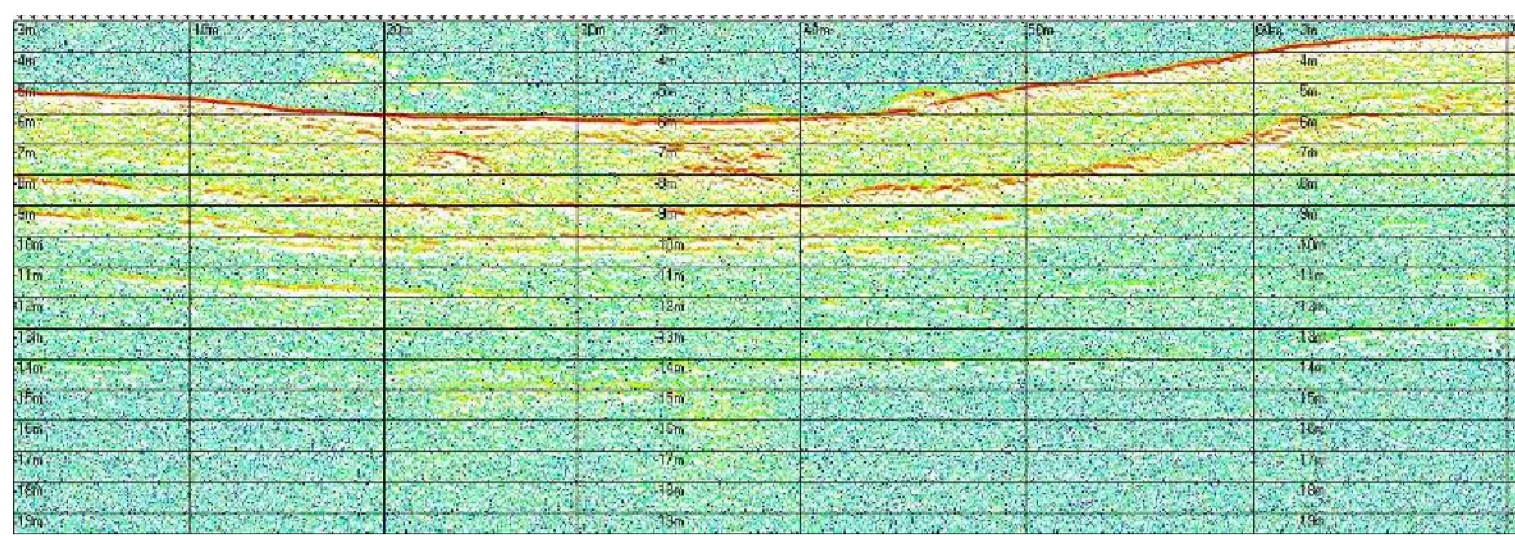
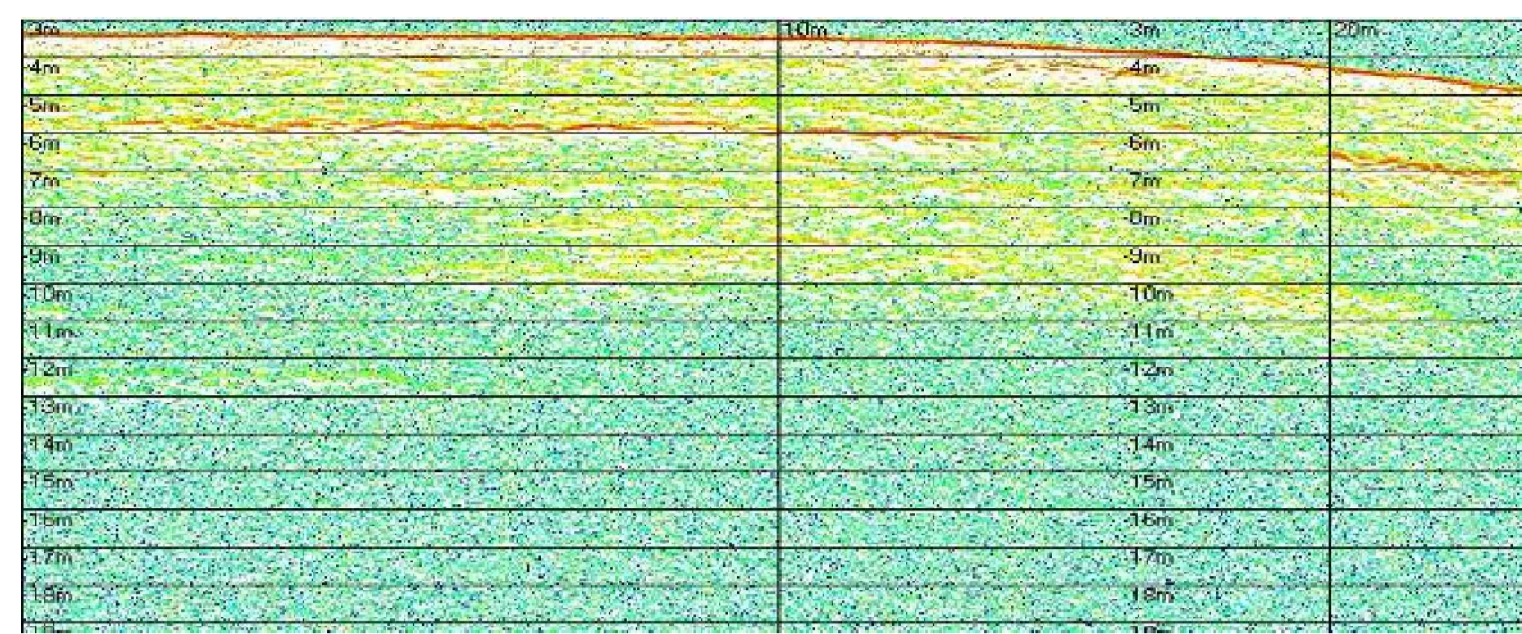


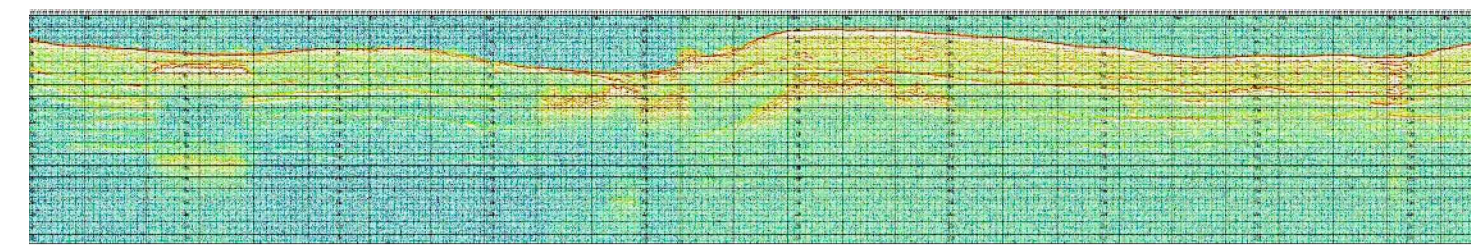
profilo sub-bottom 22



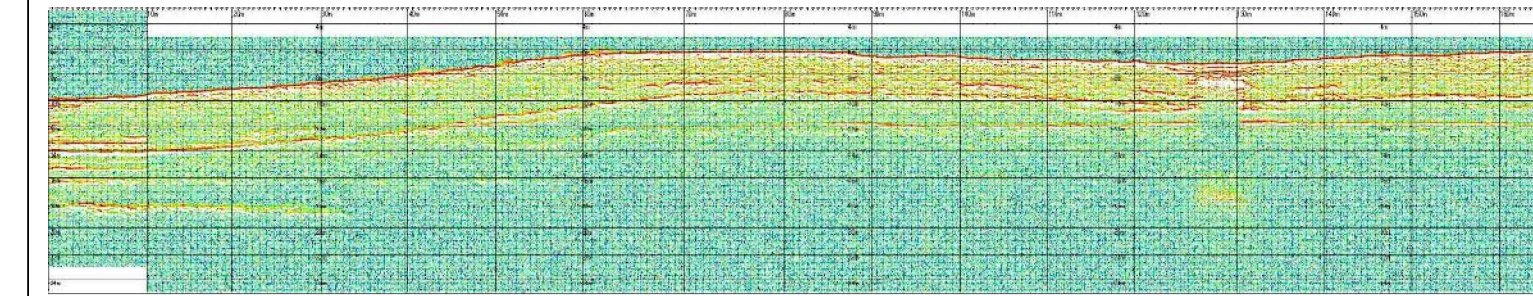
profilo sub-bottom 23



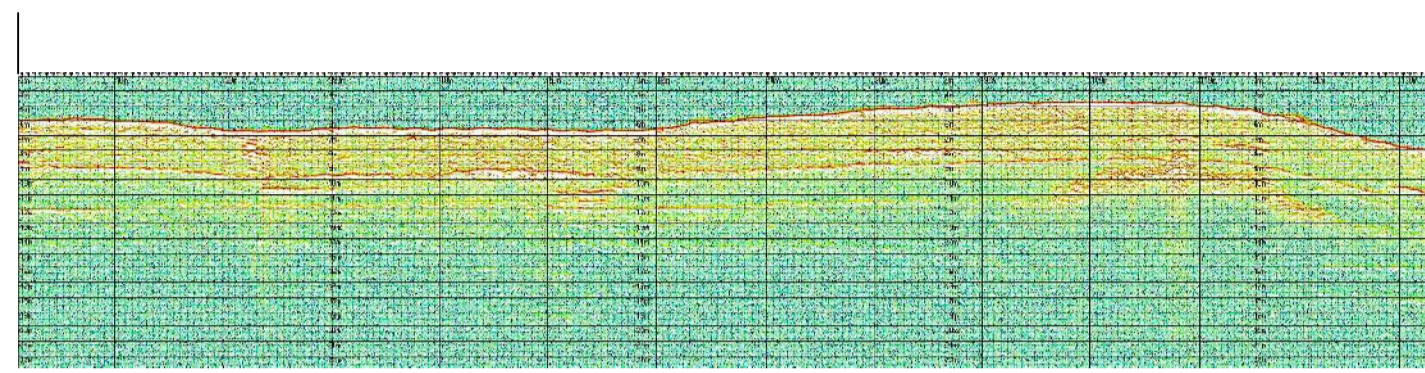
profilo sub-bottom 24



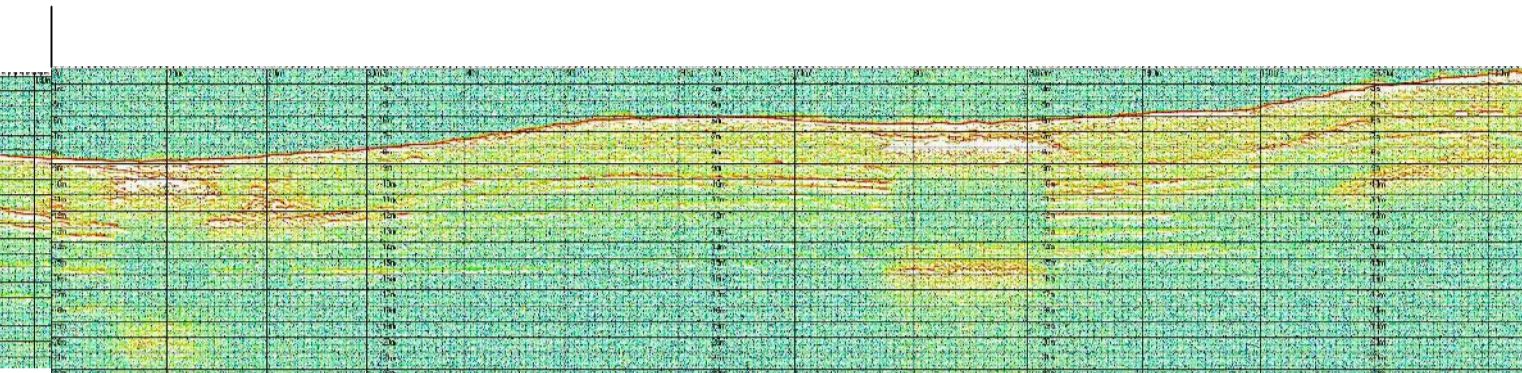
profilo sub-bottom 25



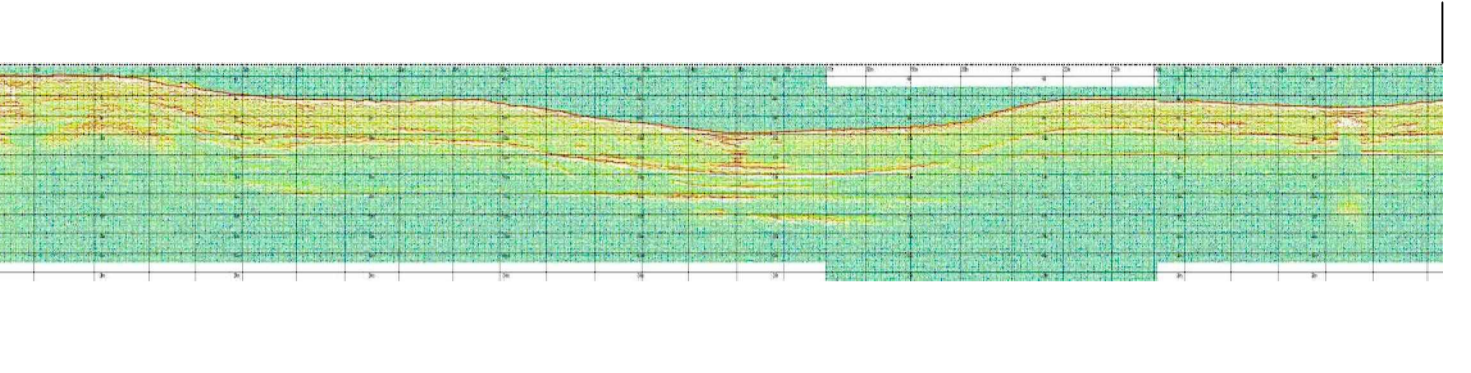
profilo sub-bottom 26



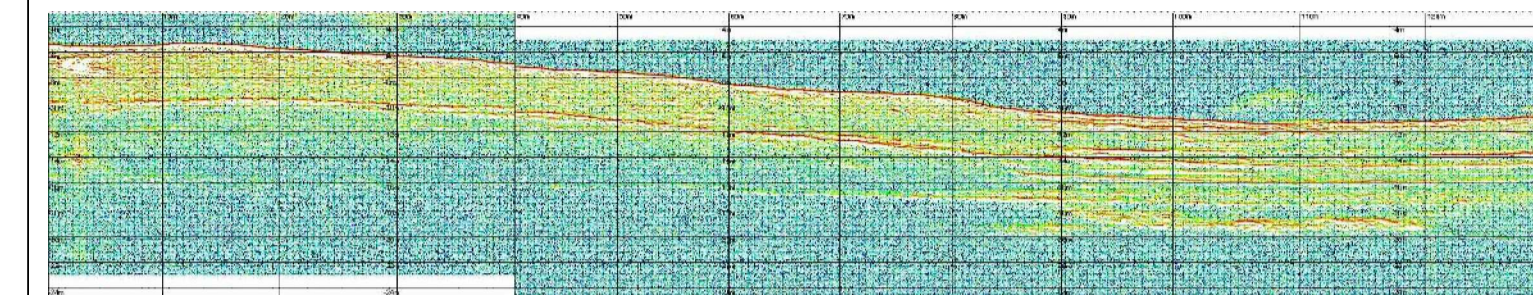
profilo sub-bottom 27



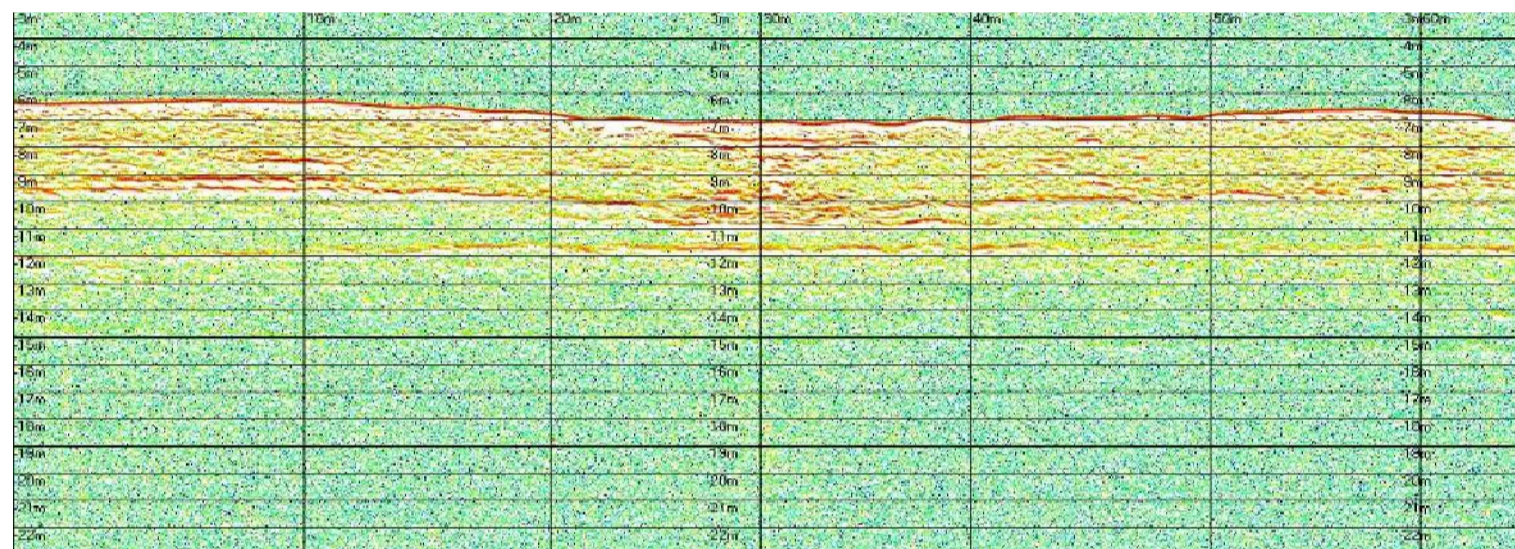
profilo sub-bottom 28



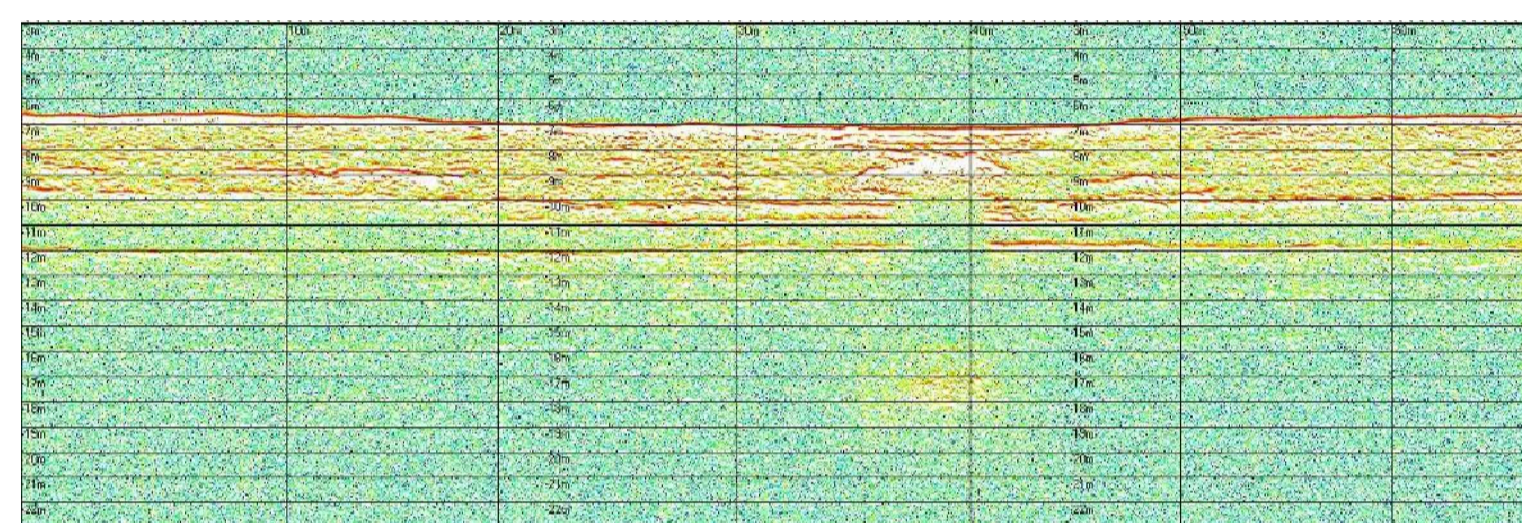
profilo sub-bottom 29



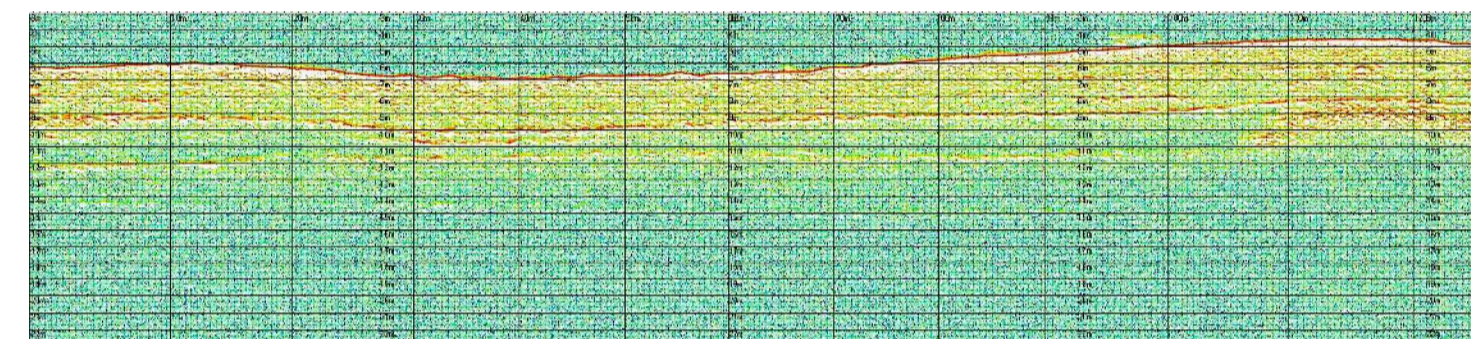
profilo sub-bottom 30



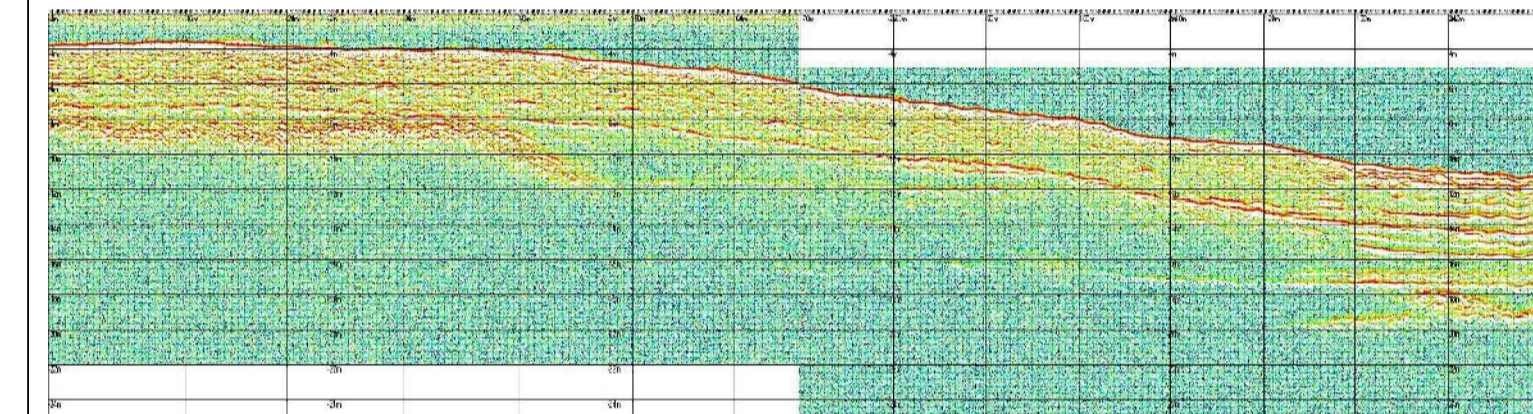
profilo sub-bottom 31



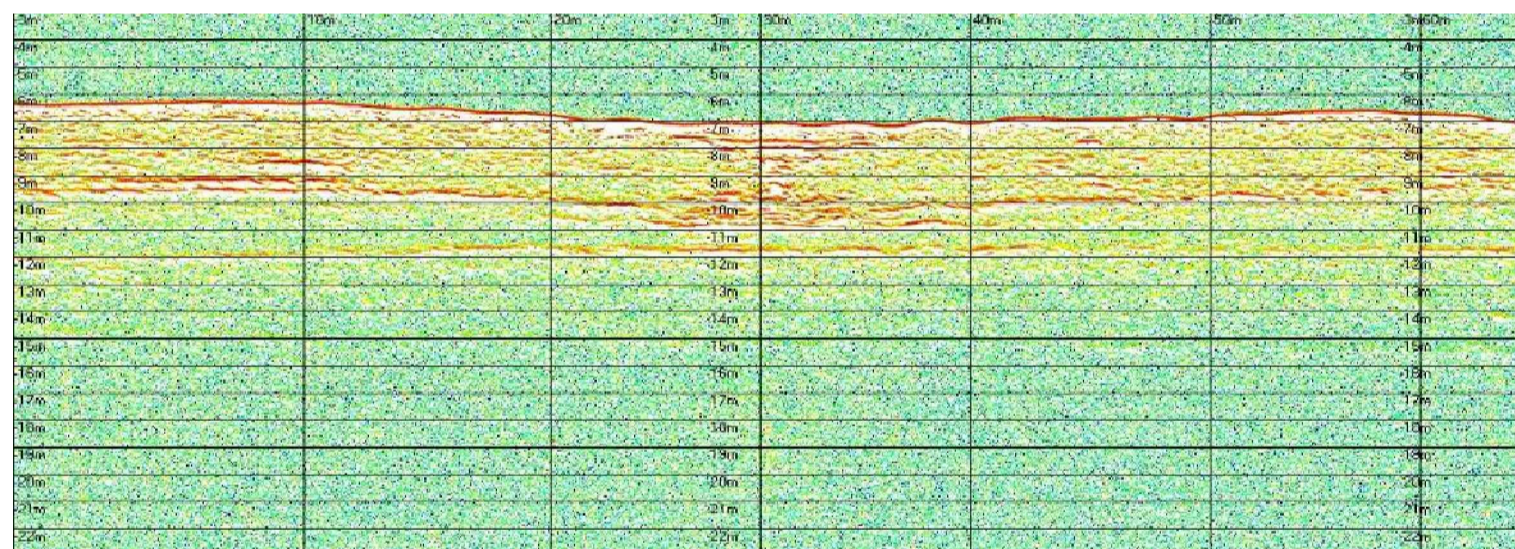
profilo sub-bottom 32



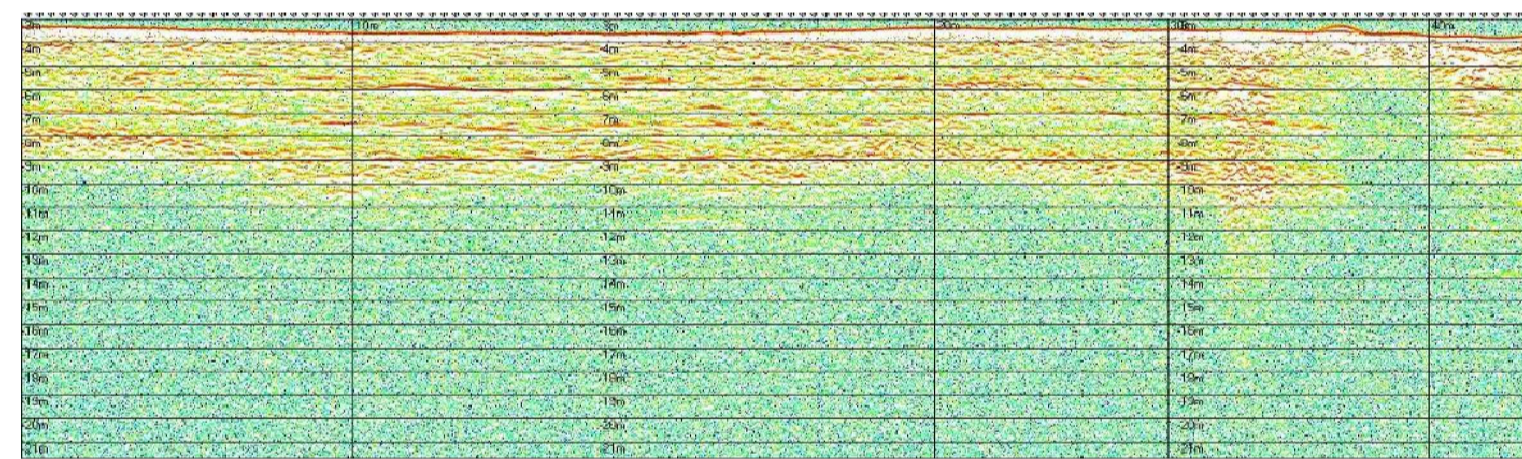
profilo sub-bottom 33



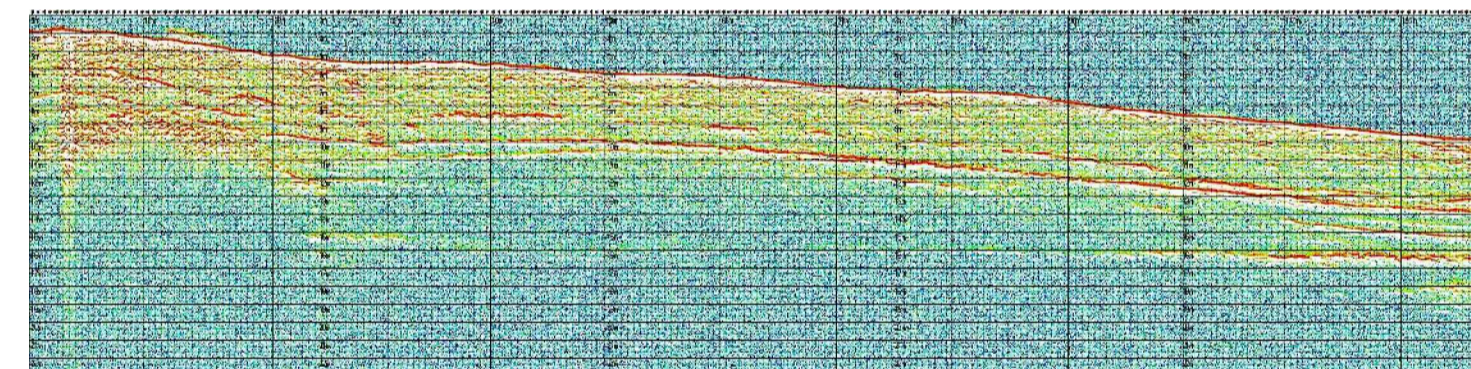
profilo sub-bottom 34



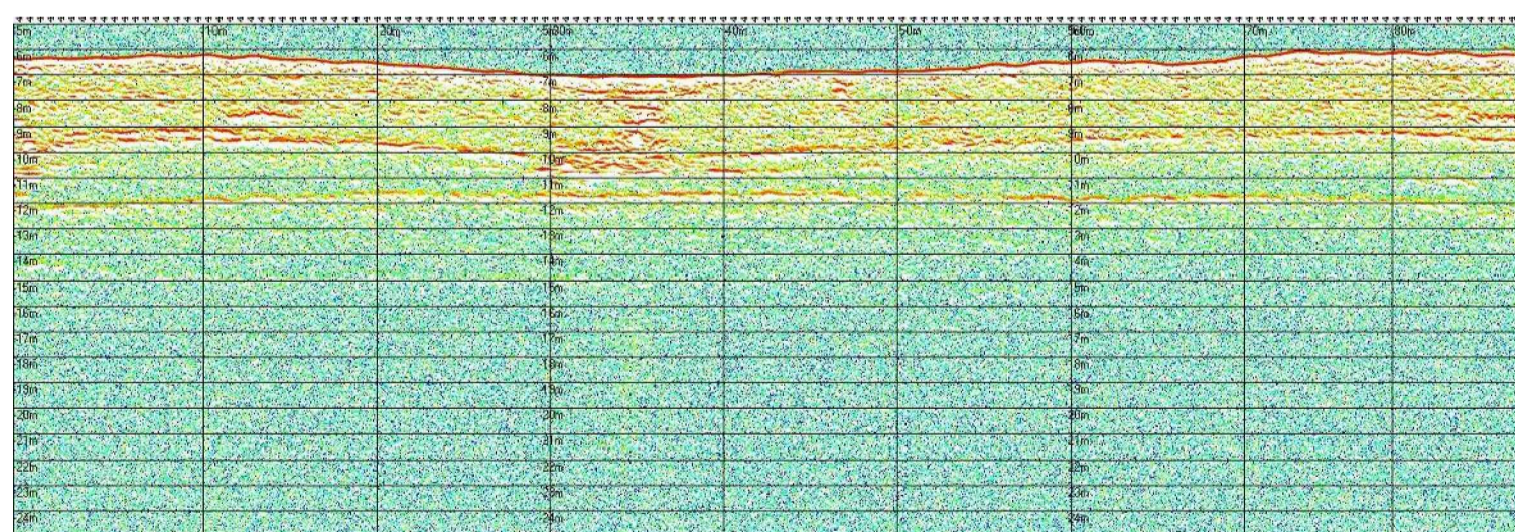
profilo sub-bottom 35



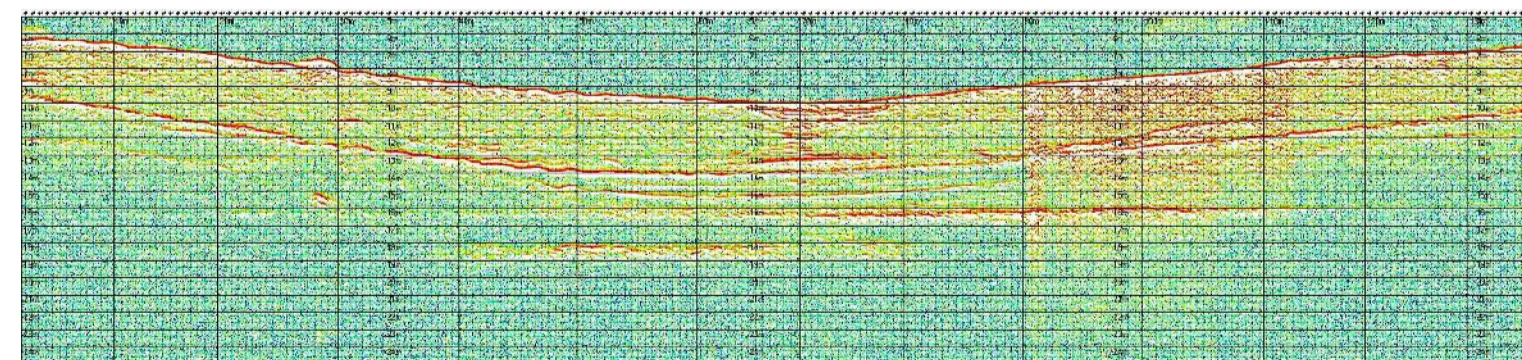
profilo sub-bottom 36



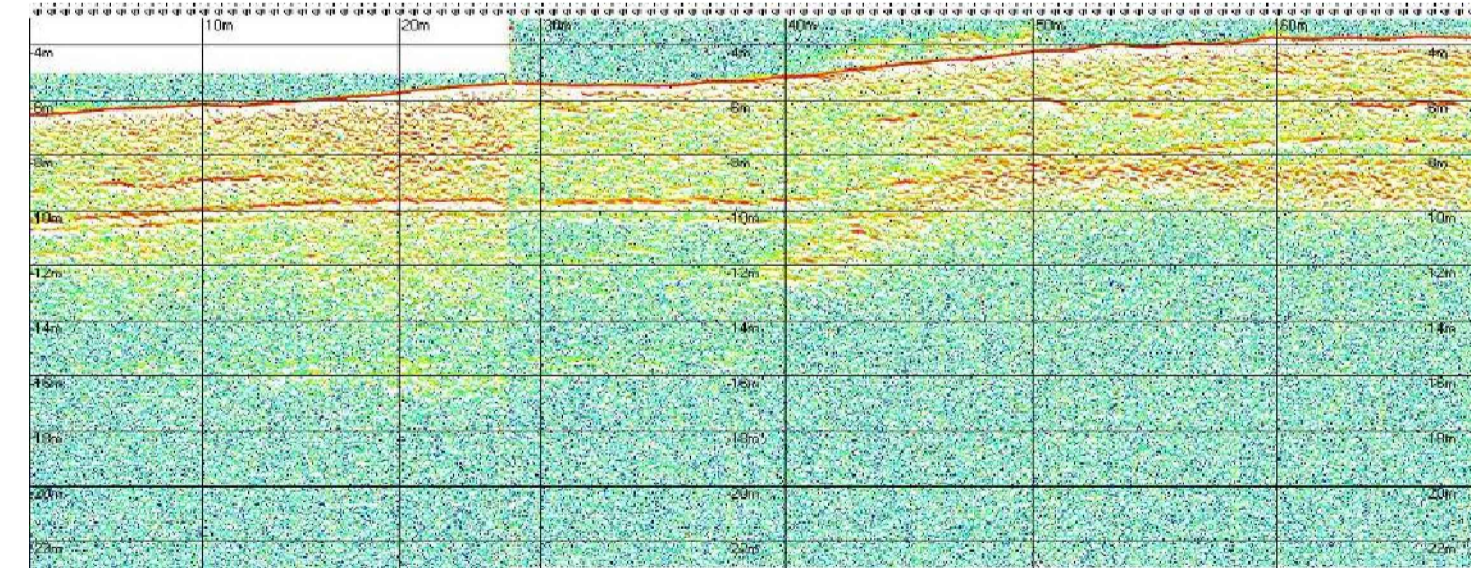
profilo sub-bottom 37



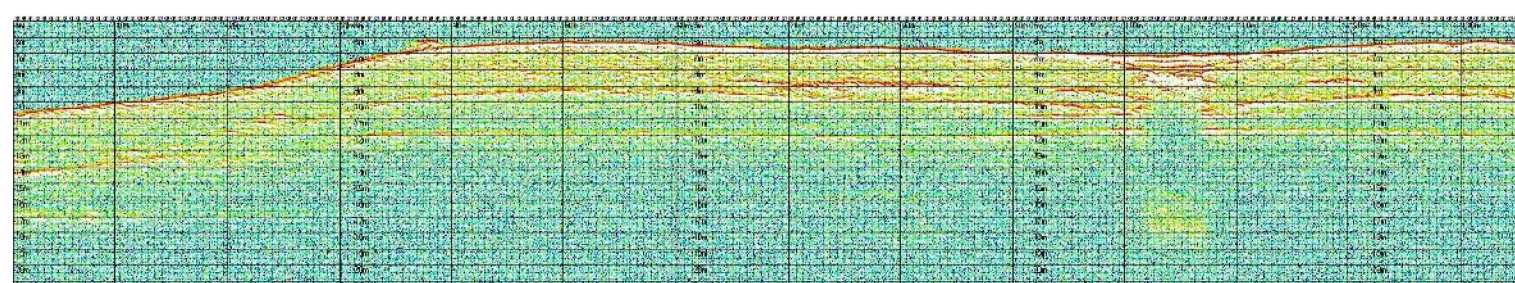
profilo sub-bottom 38



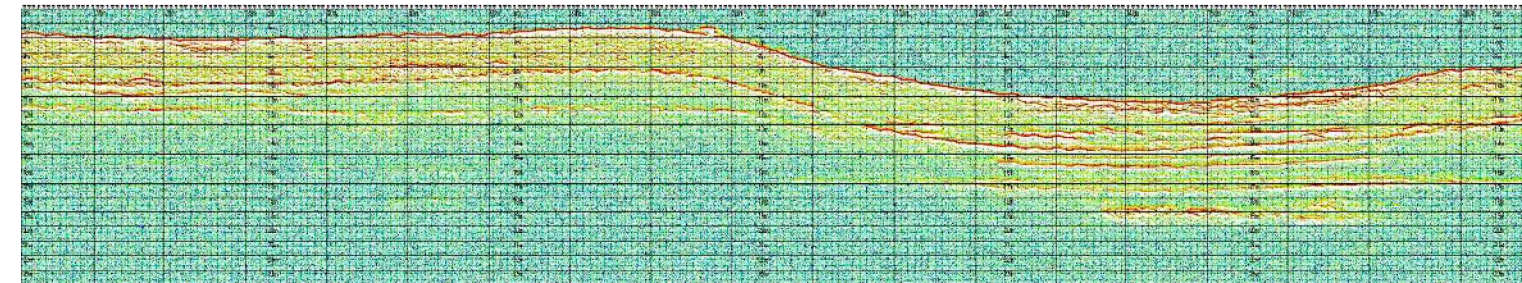
profilo sub-bottom 39



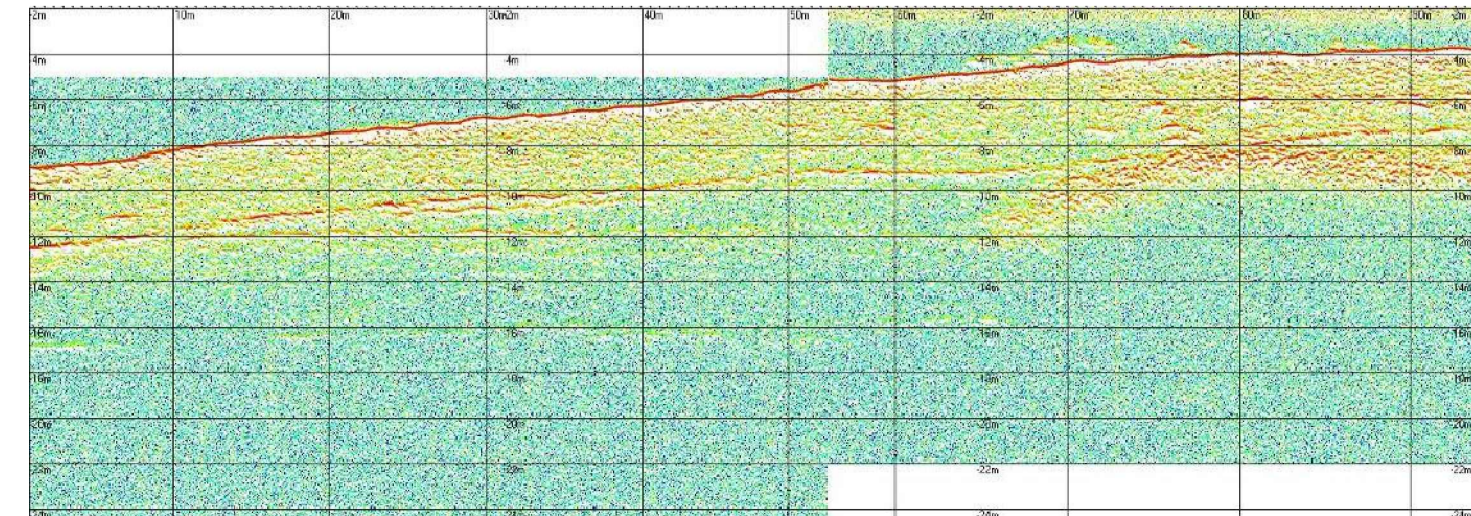
profilo sub-bottom 40



profilo sub-bottom 41



profilo sub-bottom 42



Autorità Portuale di Augusta

LAVORI DEL PRIMO STRALCIO E DEL SECONDO STRALCIO DELLA TERZA FASE DEL PORTO COMMERCIALE DI AUGUSTA - BANCHINE CONTAINERS -

IMPRESE:



Condotte S.p.A. Fondata il 7 aprile 1887



(MANDATARIA)

(MANDANTI)

PROGETTO ESECUTIVO DI FUSIONE ED INTEGRAZIONE DEL I E II STRALCIO

3						
2						
1						
0	081114	PRIMA EMISSIONE		P. PERCONTI	D. RIGOLLIOSO	F. GIORDANO
REV.	DATA	EMISSIONE	RED.	VER.	APPR.	

PROGETTO	OPERA	TIPO ELAB.	N° ELAB.	REV.	SCALA:
1073	IG00	T	007	A	varie

TITOLO ELABORATO: INQUADRAMENTO GENERALE STUDI E RELAZIONI SPECIALISTICHE Rilievo Sub Bottom Profiler - profili - tav.2 di 9

PROGETTAZIONE:



RESPONSABILE DEL PROCEDIMENTO: Geom. Venerando Toscano