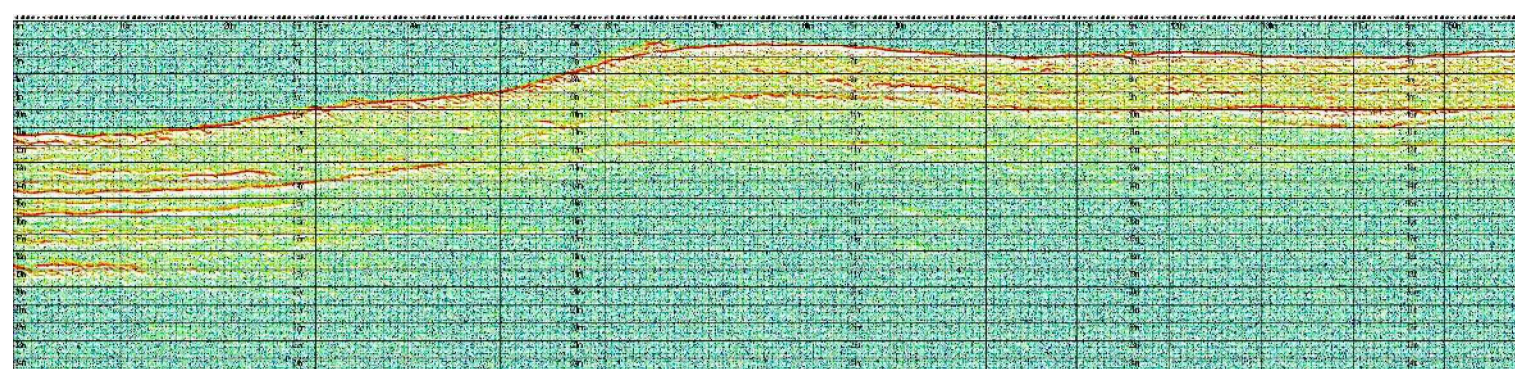
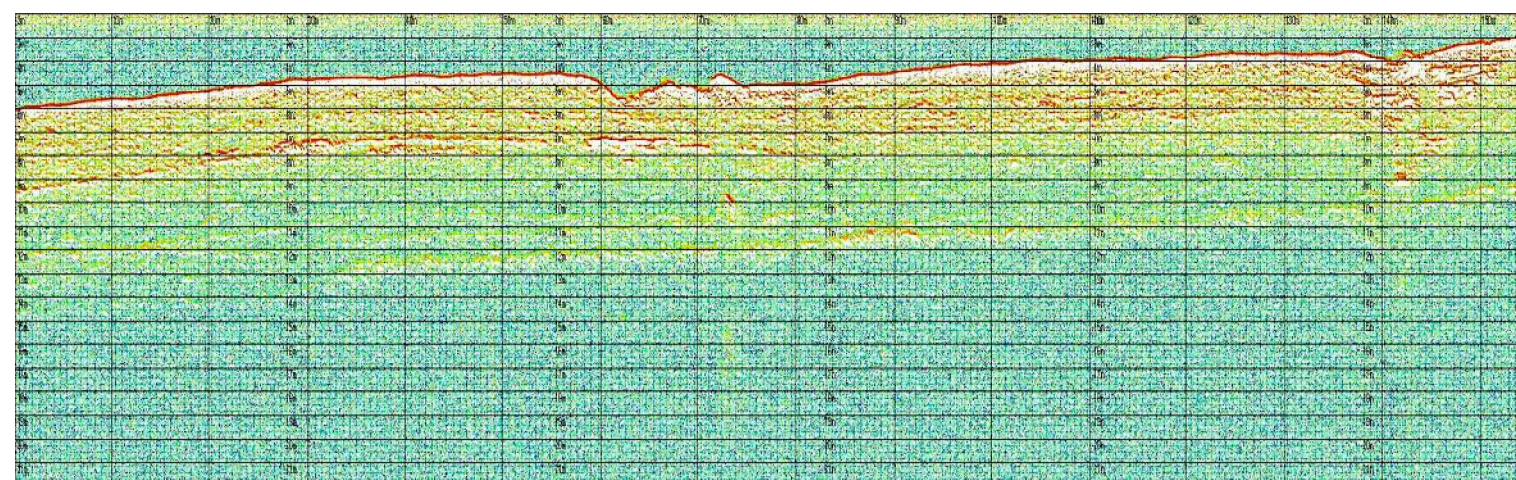


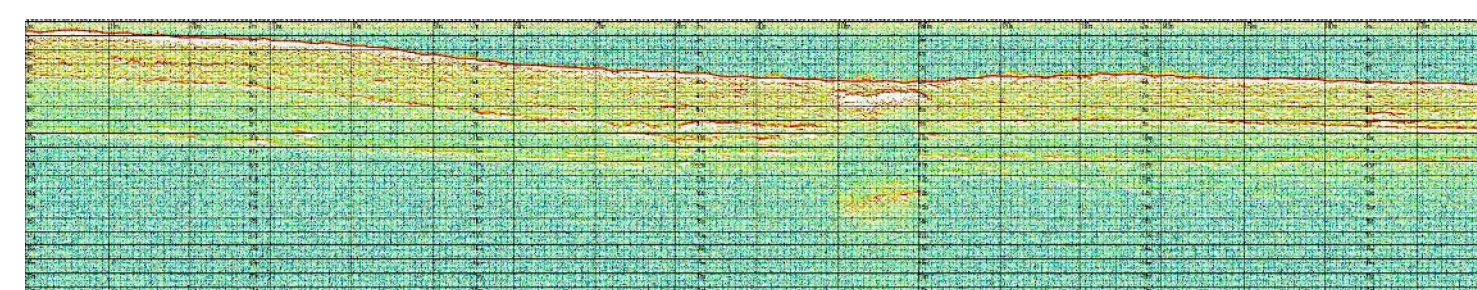
profilo sub-bottom 43



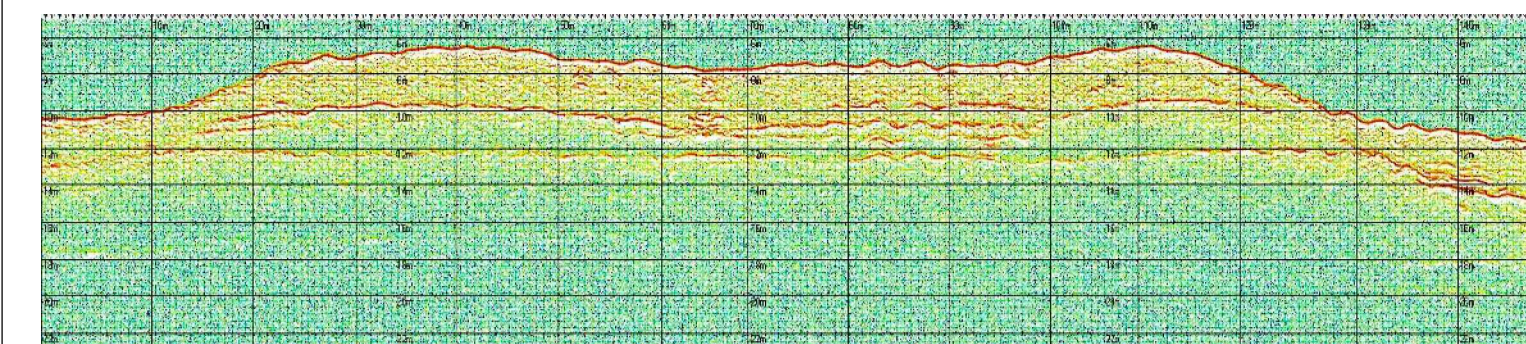
profilo sub-bottom 44



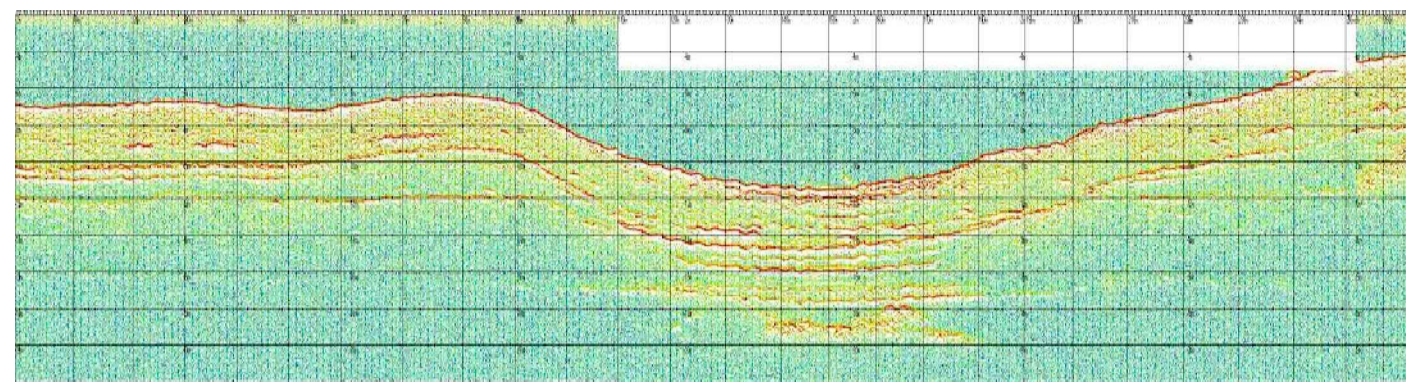
profilo sub-bottom 45



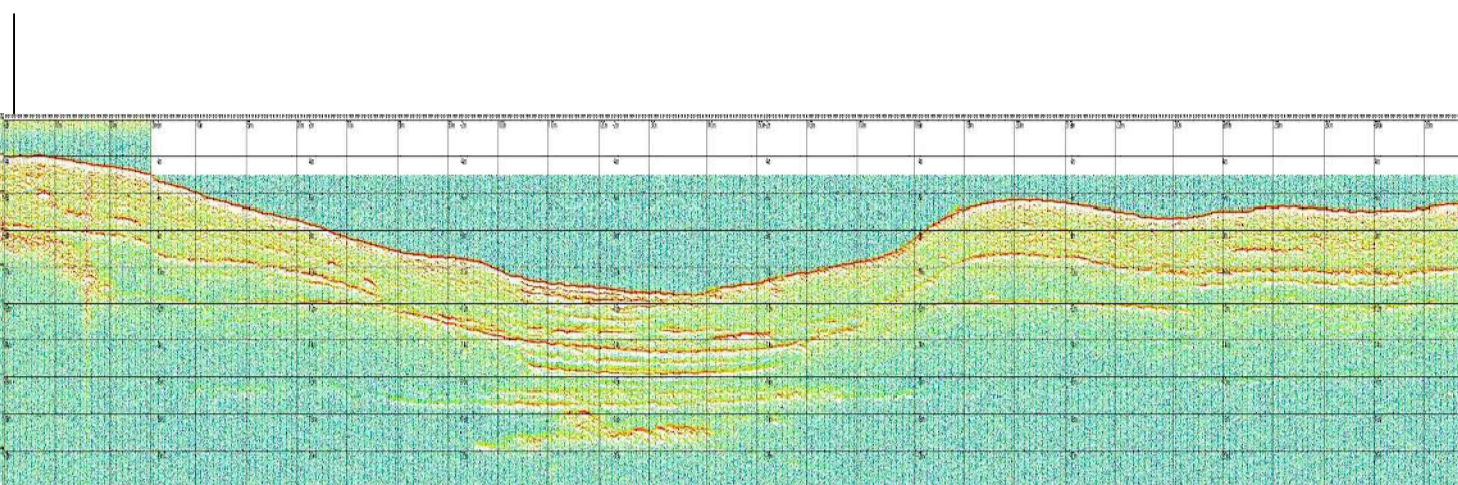
profilo sub-bottom 46



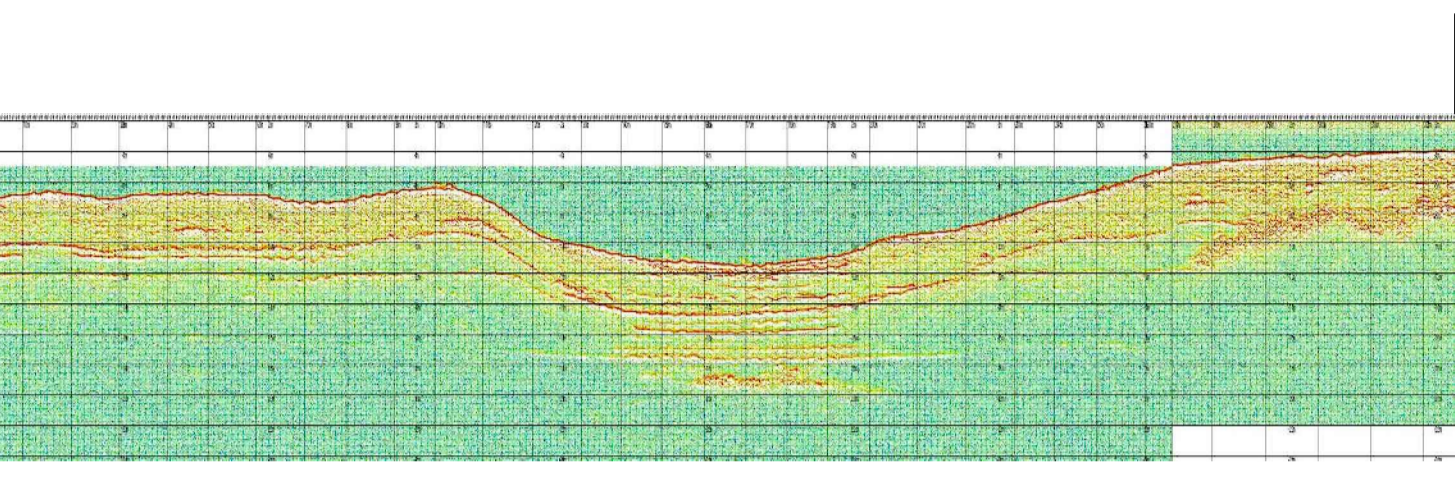
profilo sub-bottom 47



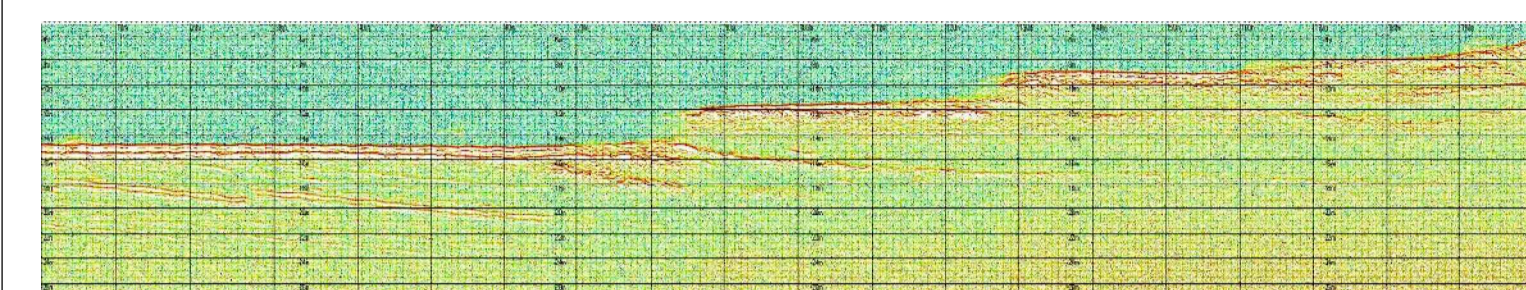
profilo sub-bottom 48



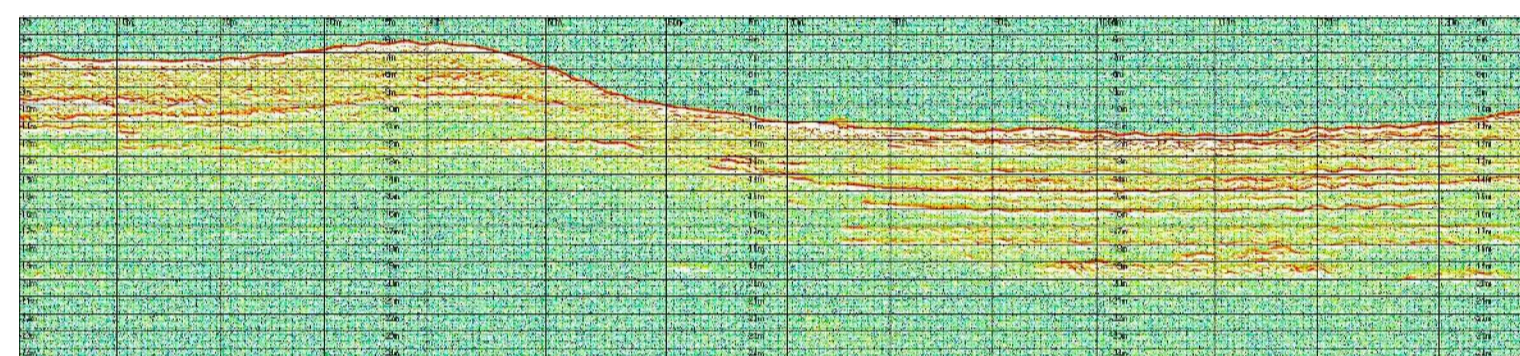
profilo sub-bottom 49



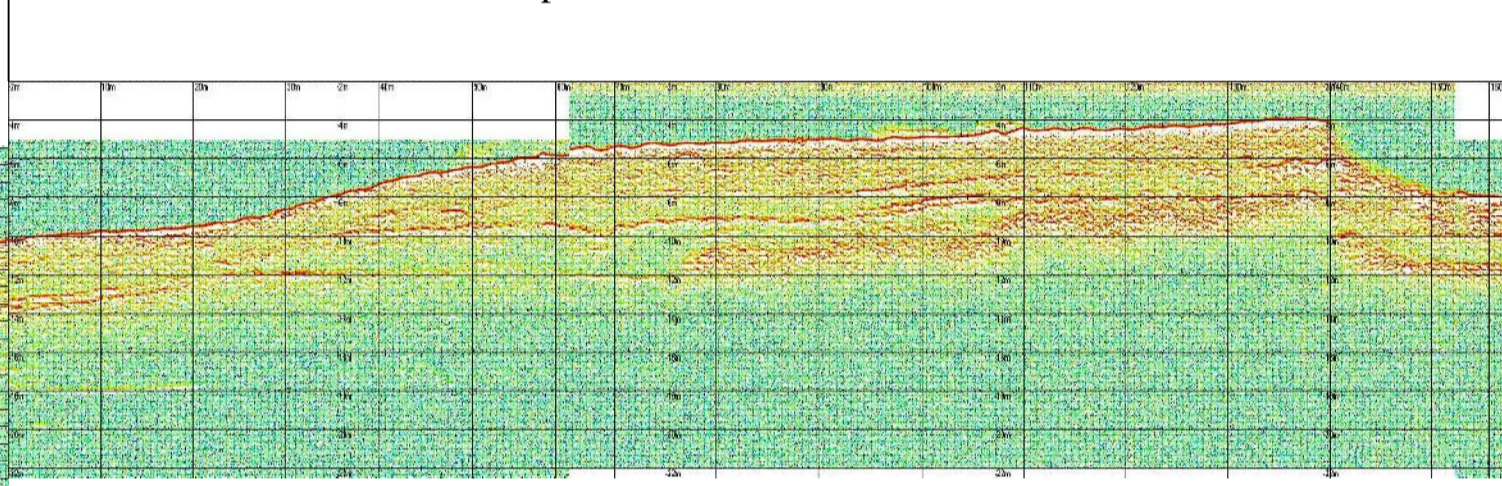
profilo sub-bottom 50



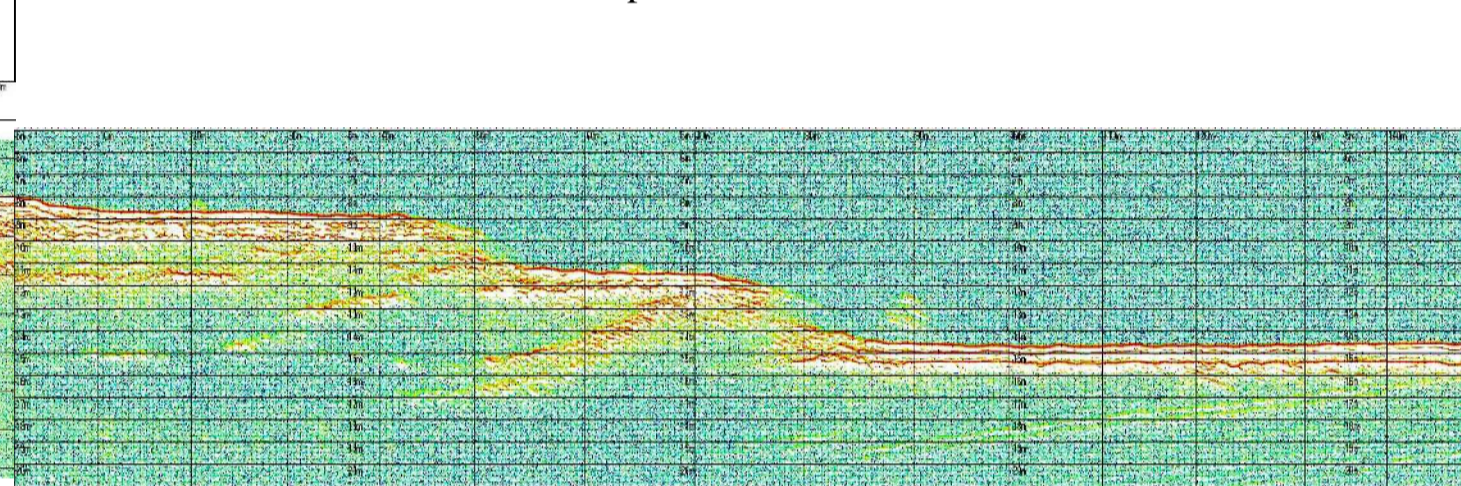
profilo sub-bottom 51



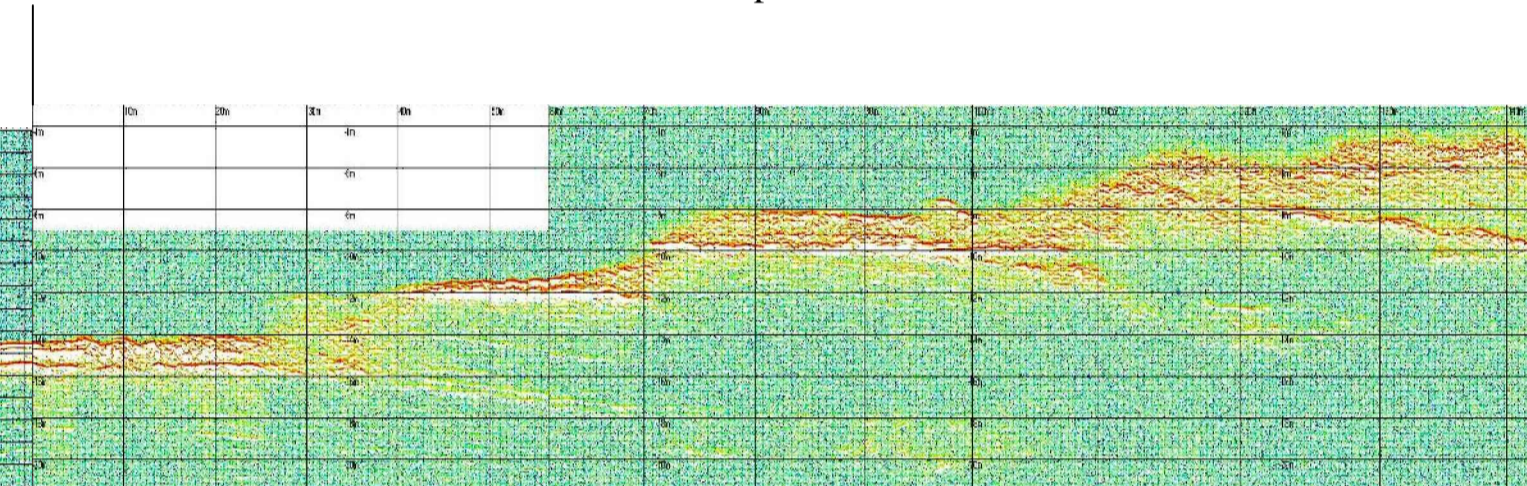
profilo sub-bottom 52



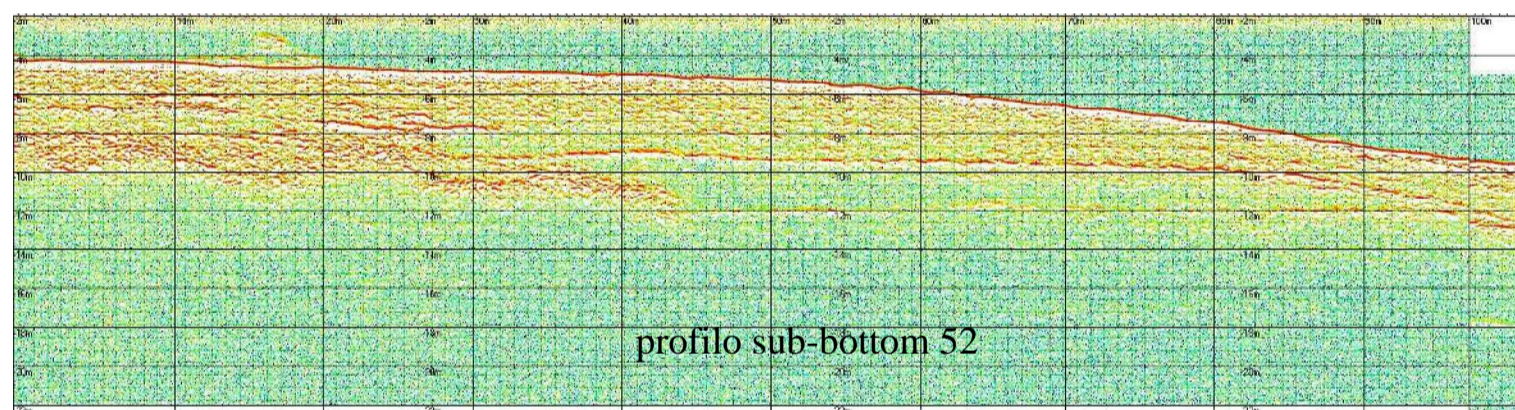
profilo sub-bottom 53



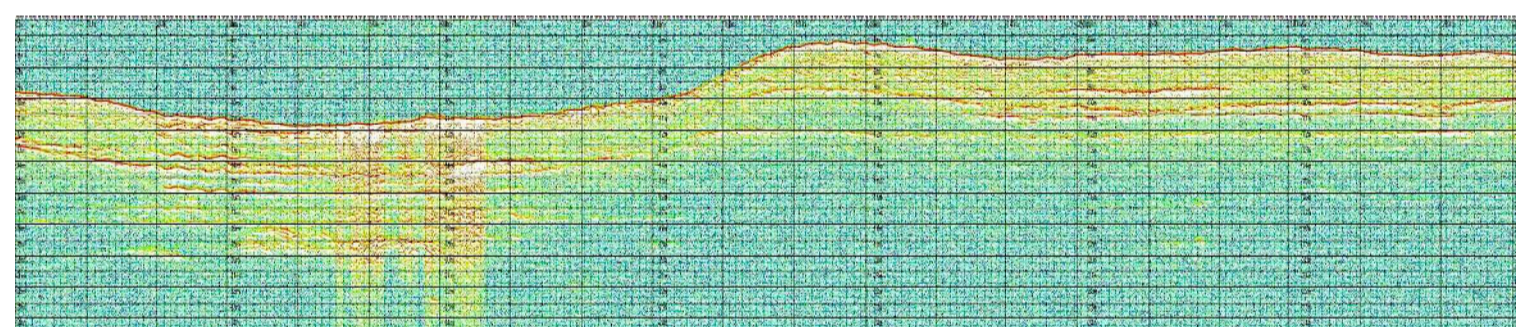
profilo sub-bottom 54



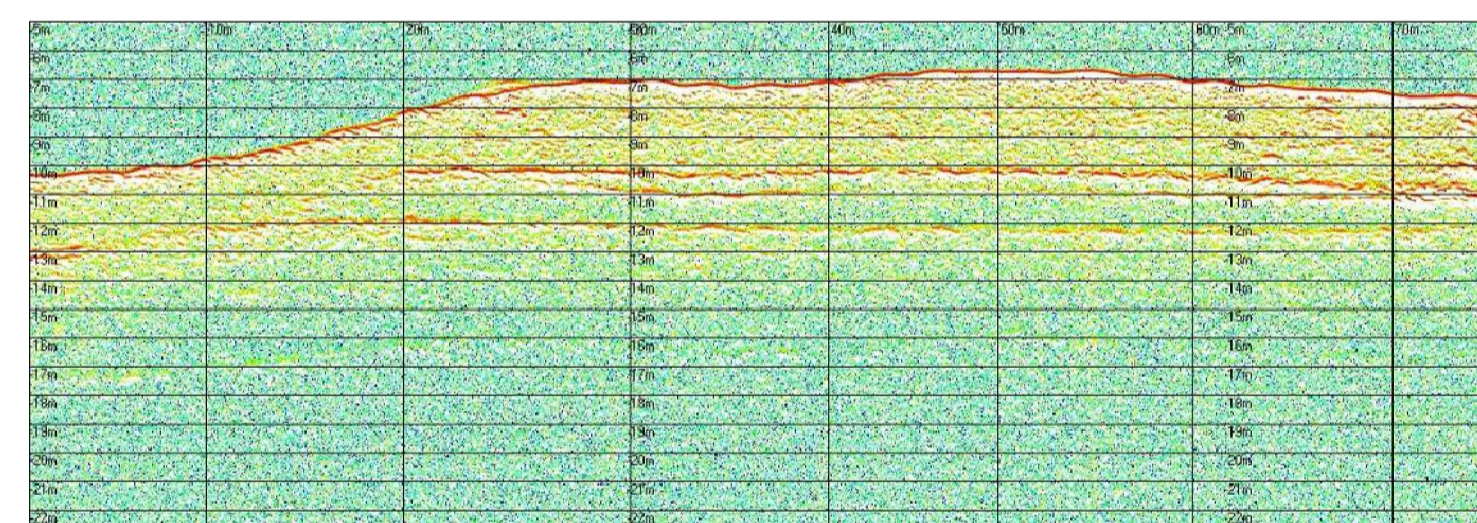
profilo sub-bottom 55



profilo sub-bottom 56



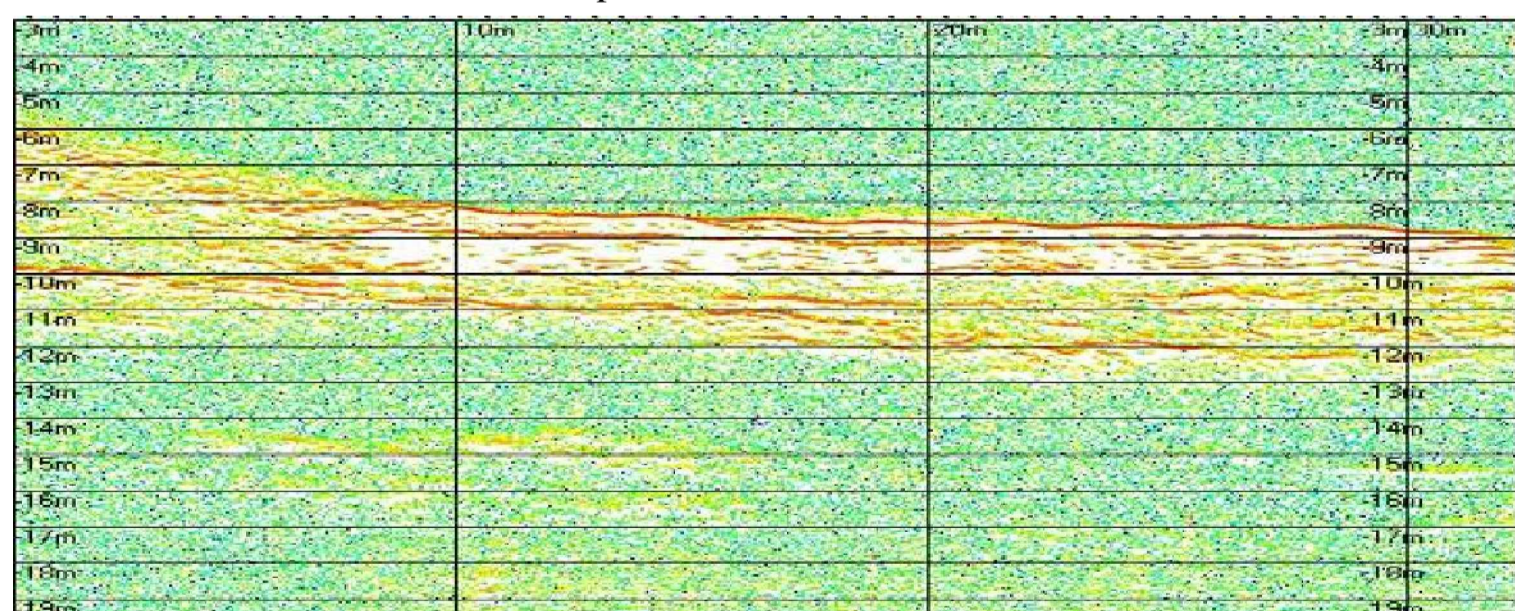
profilo sub-bottom 57



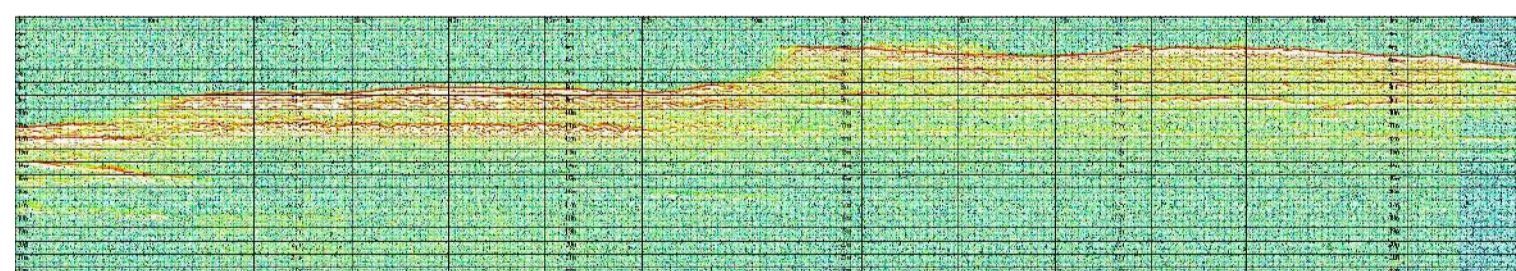
profilo sub-bottom 52



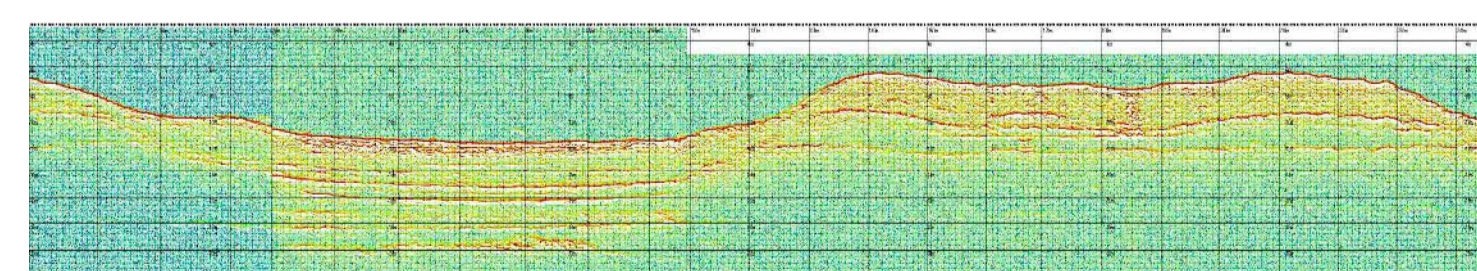
profilo sub-bottom 58



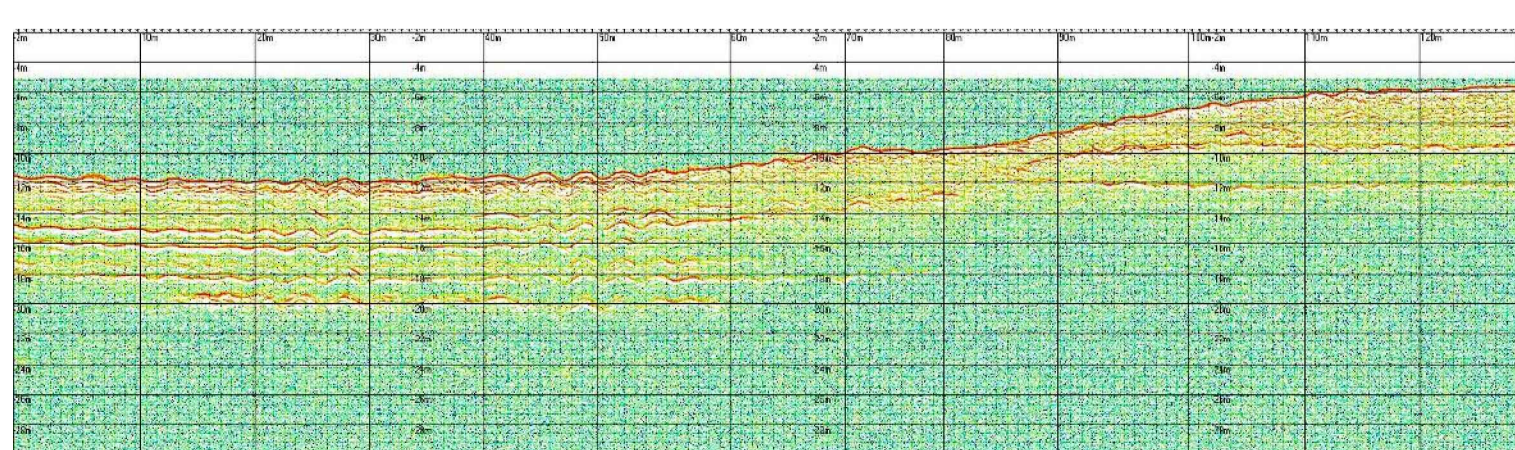
profilo sub-bottom 59



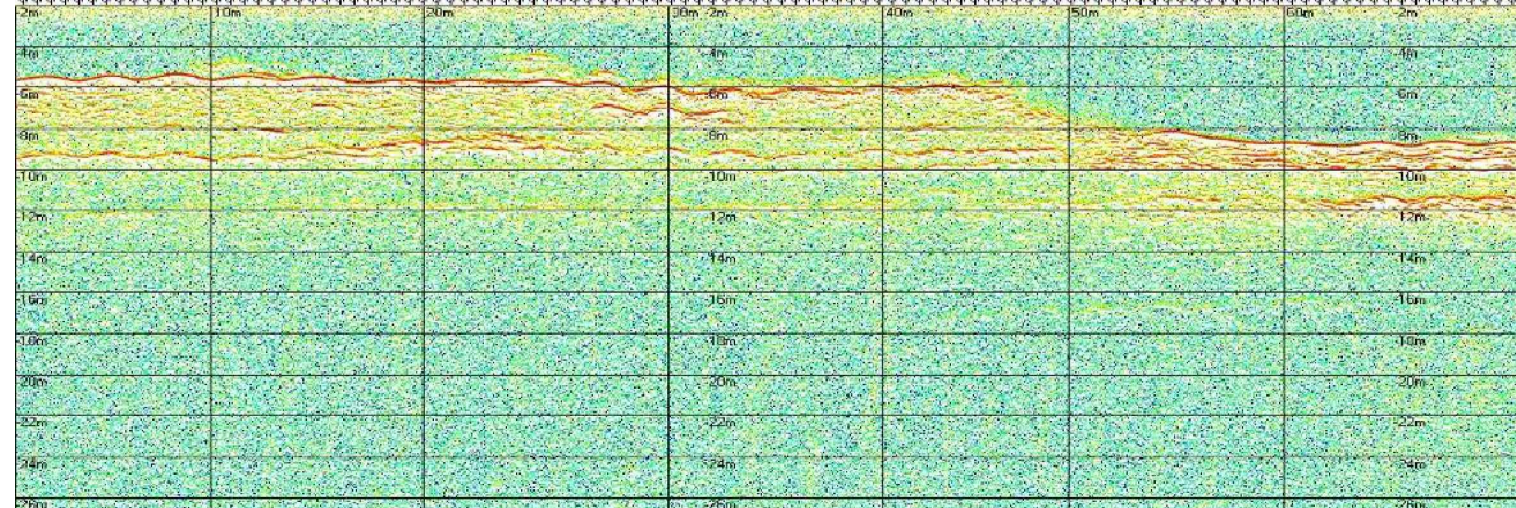
profilo sub-bottom 60



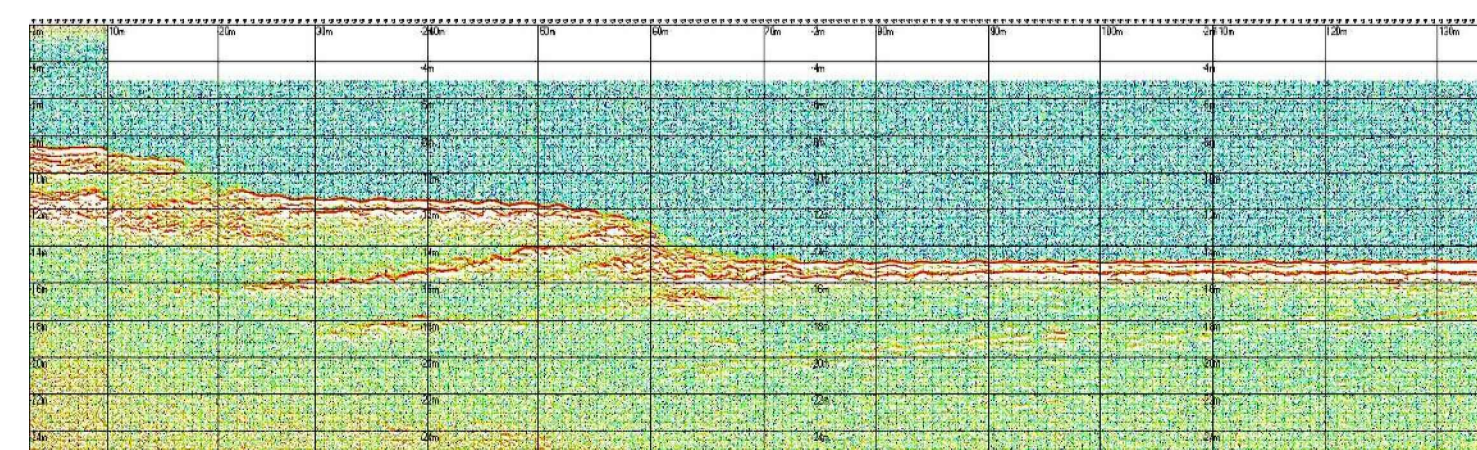
profilo sub-bottom 61



profilo sub-bottom 62



profilo sub-bottom 63



Autorità Portuale di Augusta

LAVORI DEL PRIMO STRALCIO E DEL SECONDO STRALCIO DELLA TERZA FASE DEL PORTO COMMERCIALE DI AUGUSTA - BANCHINE CONTAINERS -

IMPRESSE: Condotte S.p.A. (MANDATARIA), PIACENTINI COSTRUZIONI (MANDANTI), Cosedil spa (MANDANTI)

PROGETTO ESECUTIVO DI FUSIONE ED INTEGRAZIONE DEL I E II STRALCIO

Table with columns for revision (REV.), date (DATA), project (PROGETTO), work (OPERA), type of work (TIPO ELAB.), number of drawings (N° ELAB.), revision (REV.), percentage (P. PERCENTI), drafter (D. RIGGOLIOSO), checker (F. GIORDANO), and approver (APPR.).

TITOLO ELABORATO: INQUADRAMENTO GENERALE STUDI E RELAZIONI SPECIALISTICHE Rilievo Sub Bottom Profiler - profili - tav.3 di 9

PROGETTAZIONE: INCO (MANDATARIA), SIGMA INGEGNERIA s.r.l. (MANDANTE)

RESPONSABILE DEL PROCEDIMENTO: Geom. Venerando Toscano