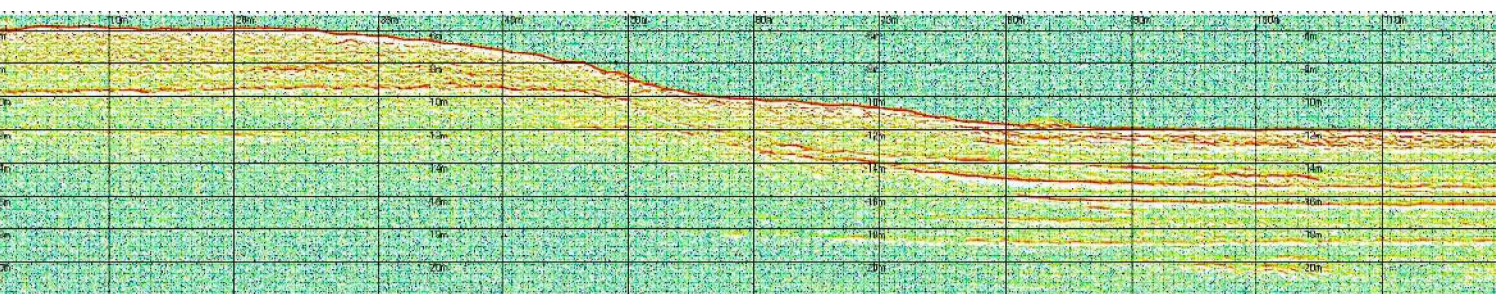
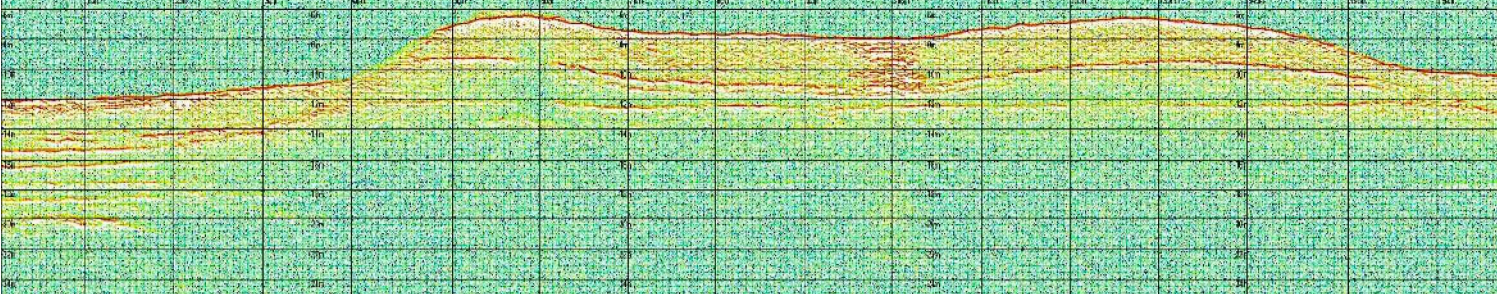


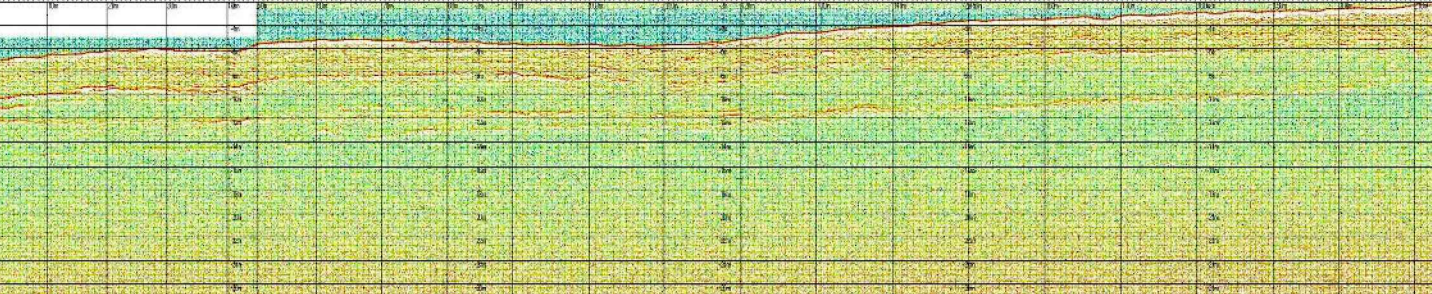
profilo sub-bottom 64



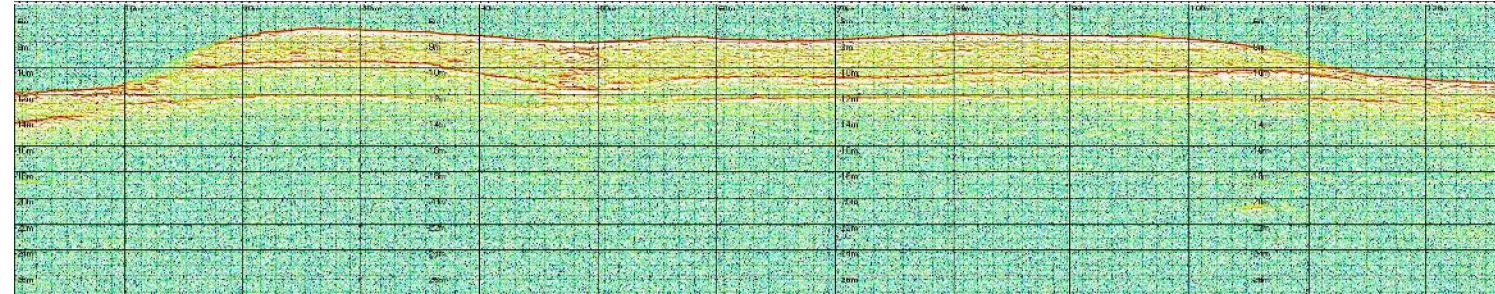
profilo sub-bottom 65



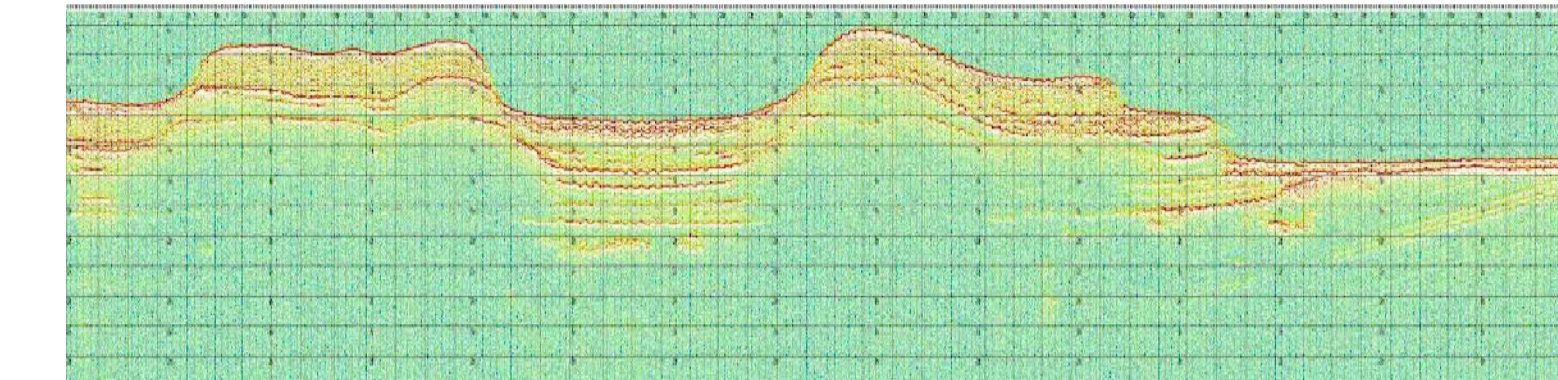
profilo sub-bottom 66



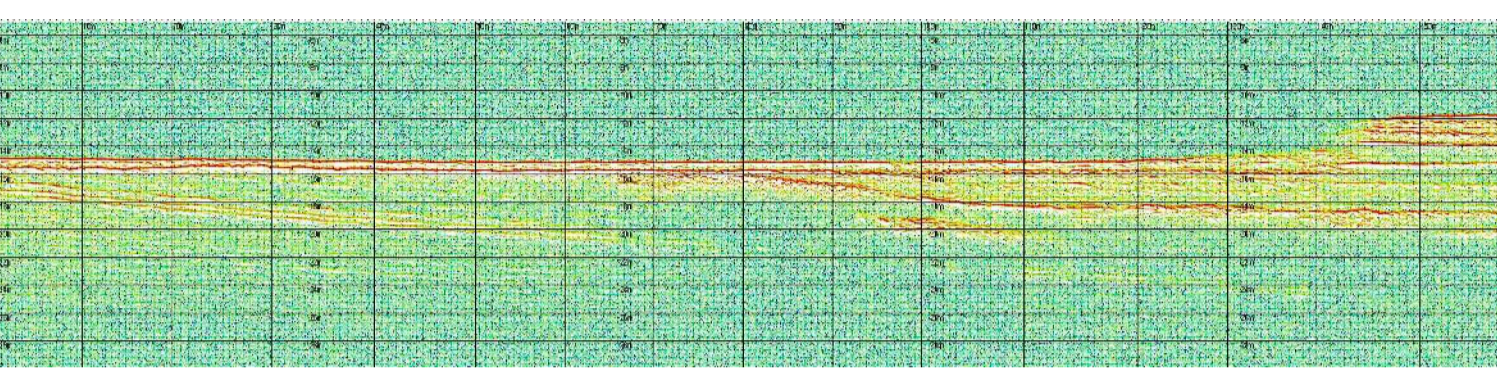
profilo sub-bottom 76



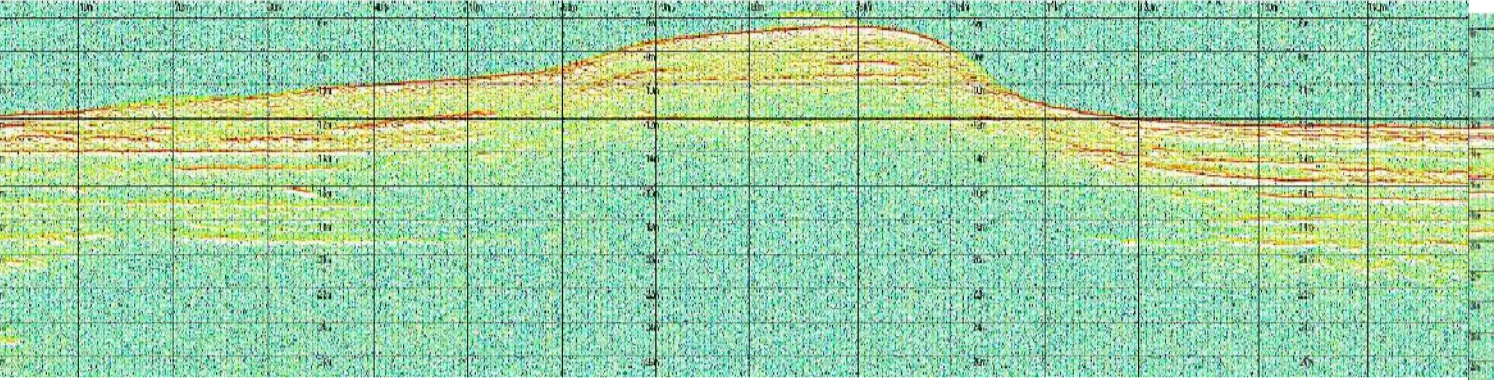
profilo sub-bottom 68



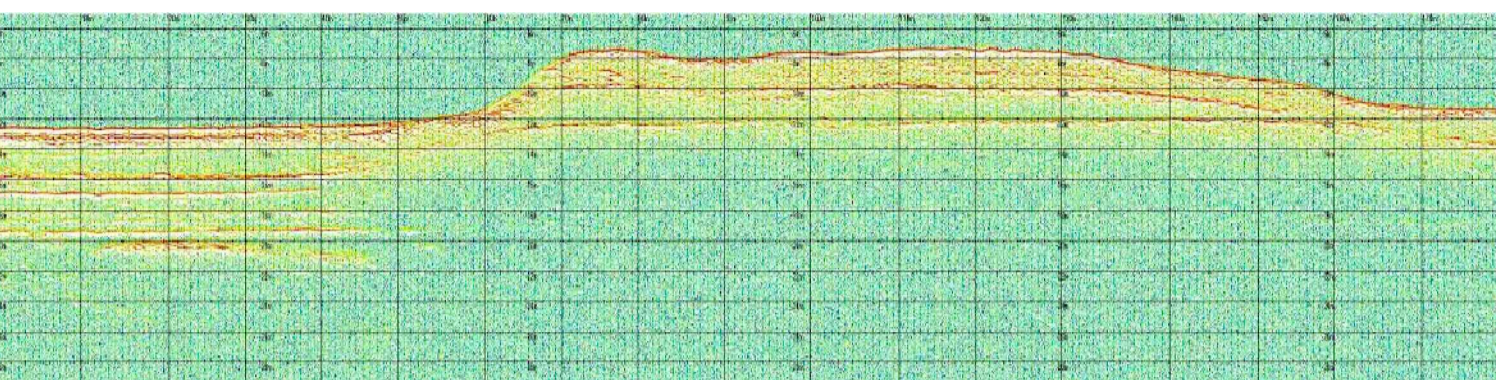
profilo sub-bottom 69



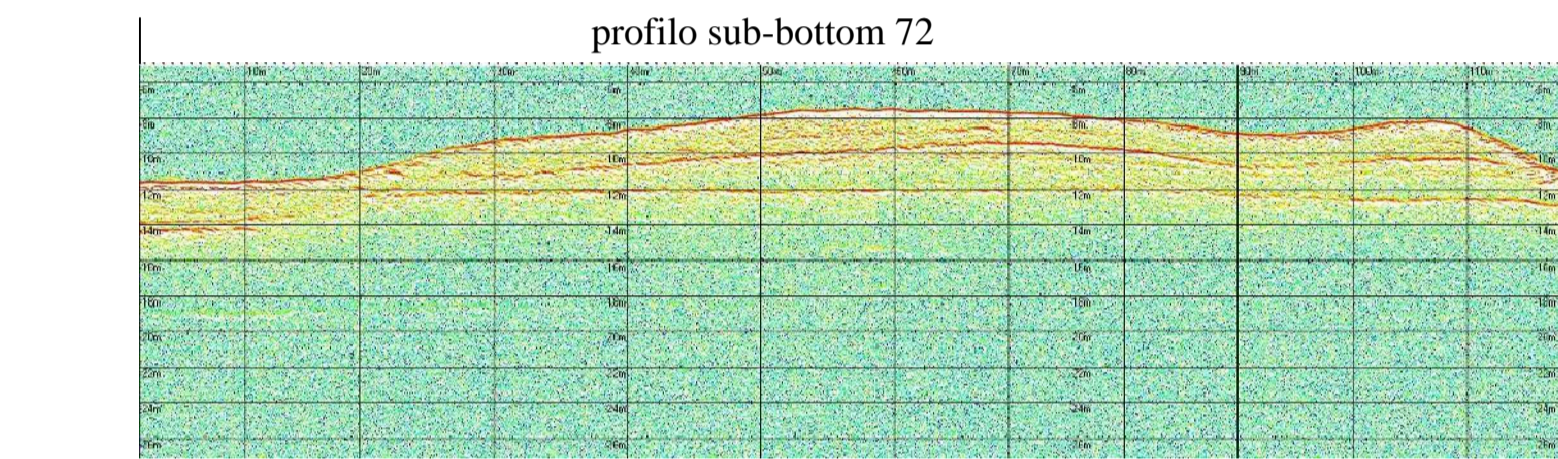
profilo sub-bottom 70



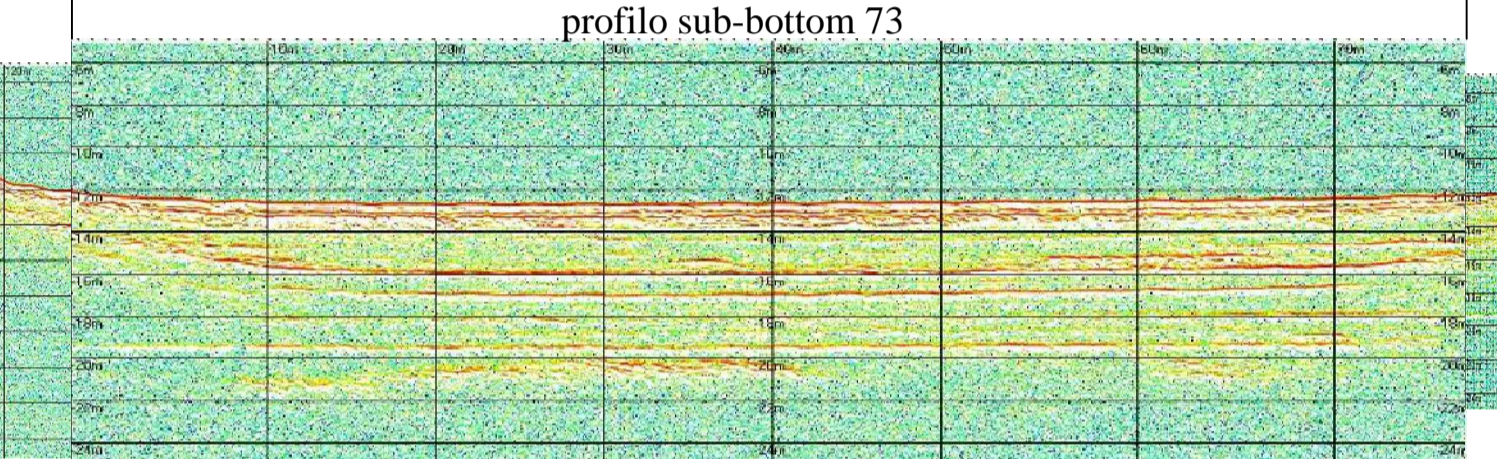
profilo sub-bottom 71



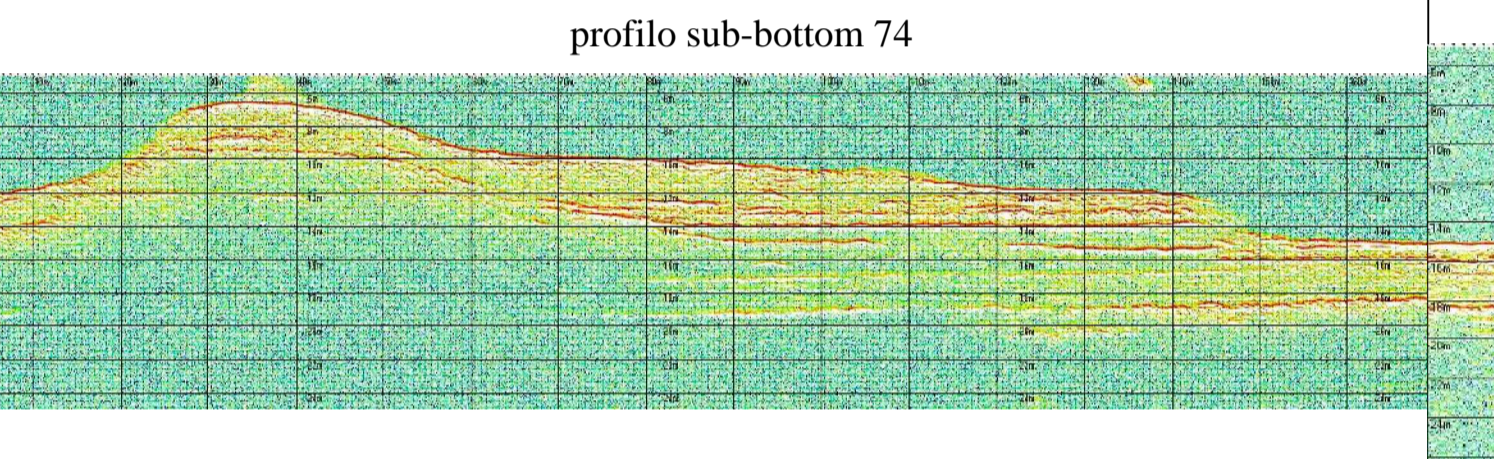
profilo sub-bottom 72



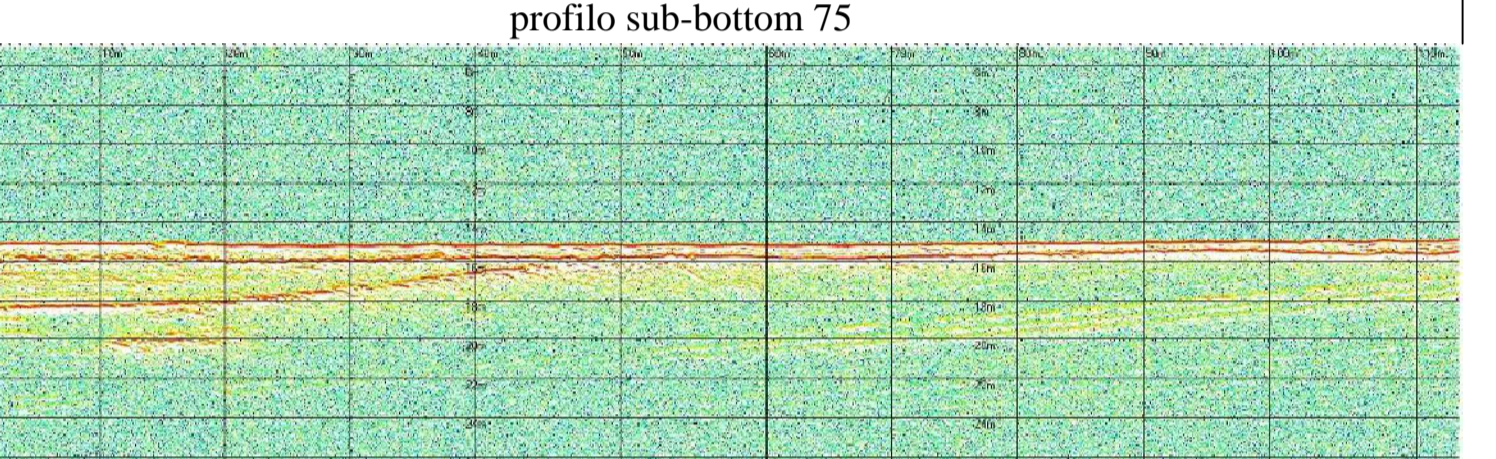
profilo sub-bottom 73



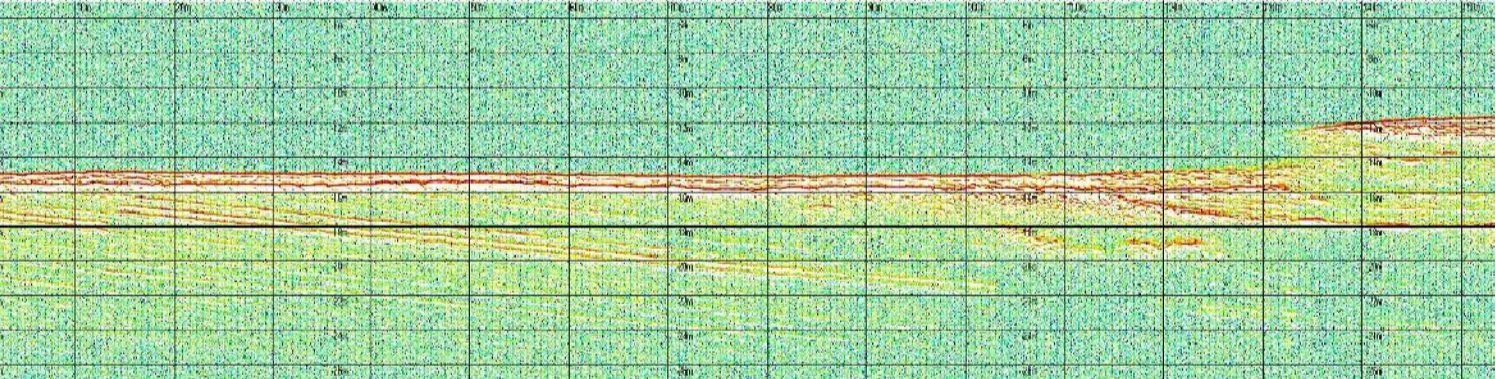
profilo sub-bottom 74



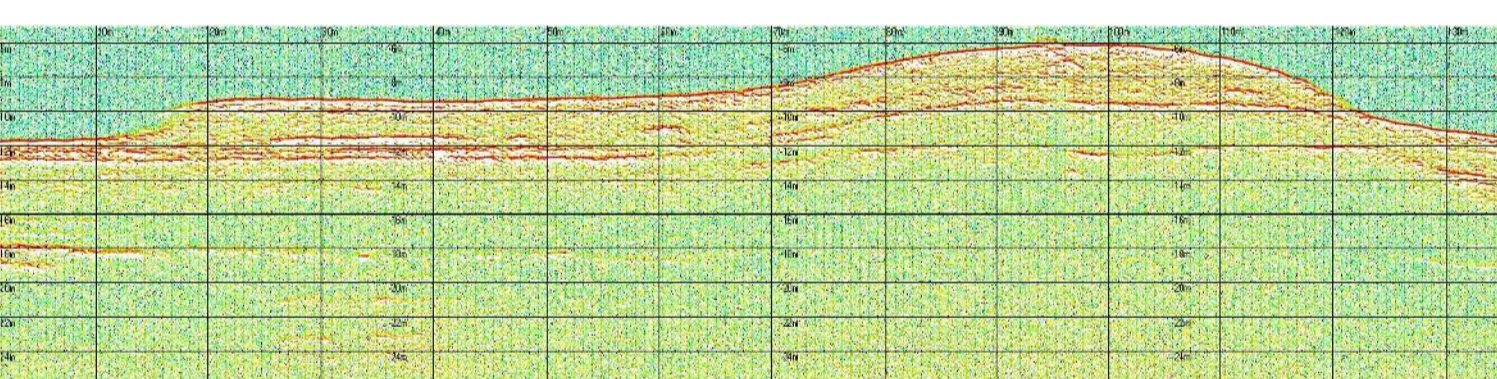
profilo sub-bottom 75



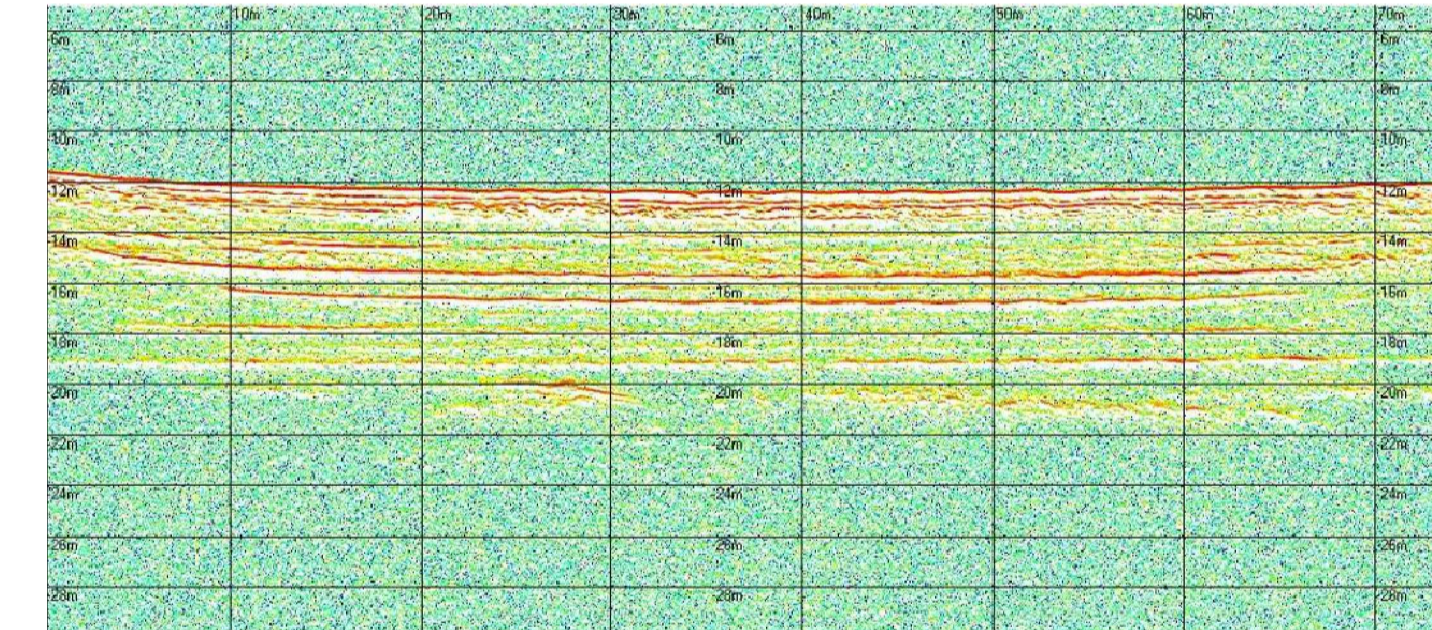
profilo sub-bottom 76



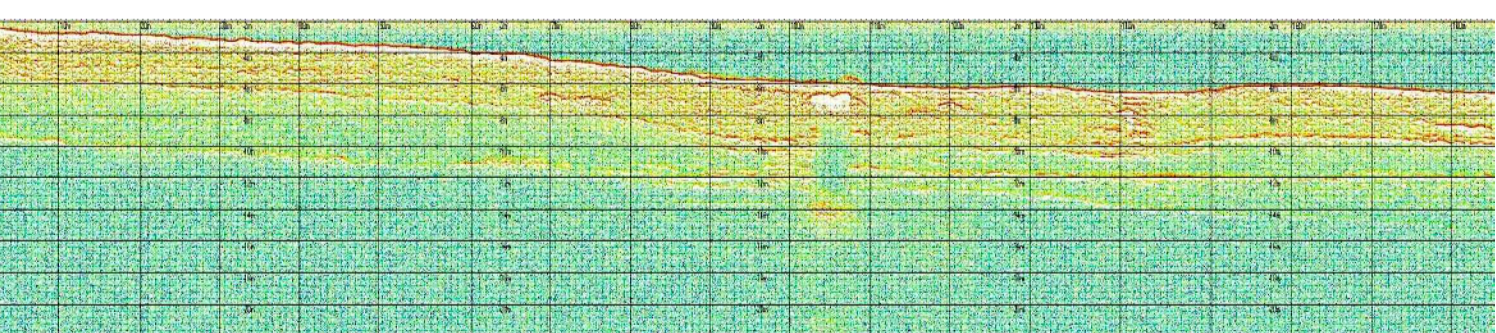
profilo sub-bottom 77



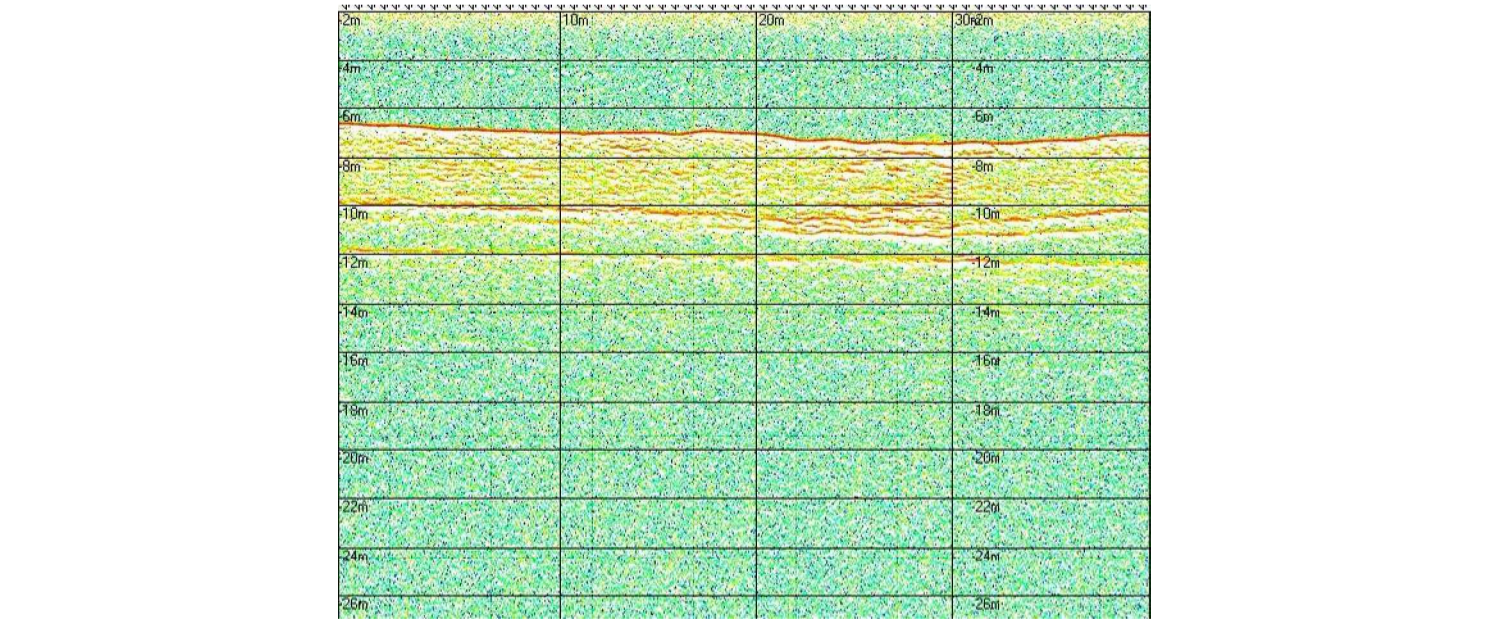
profilo sub-bottom 78



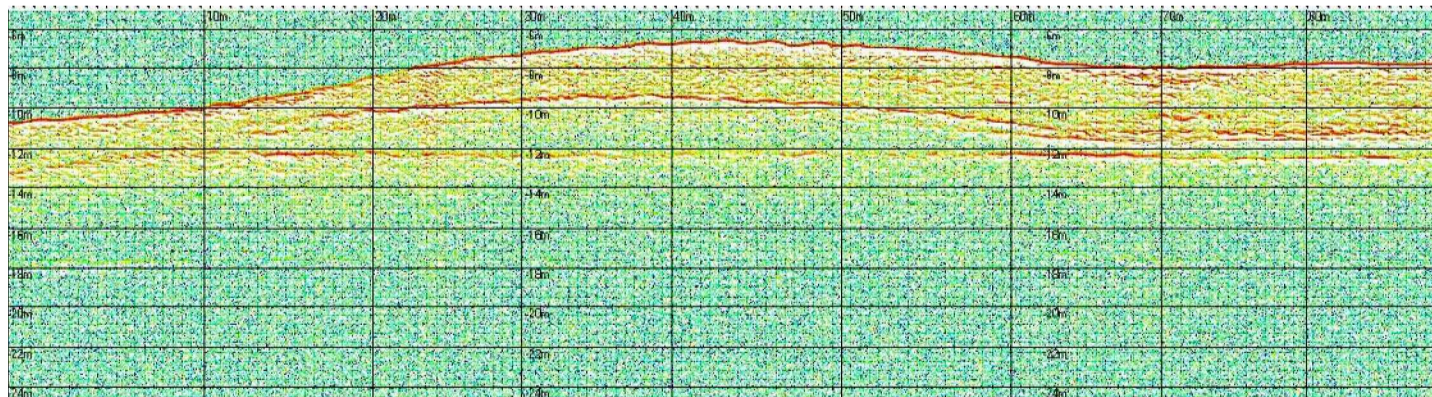
profilo sub-bottom 79



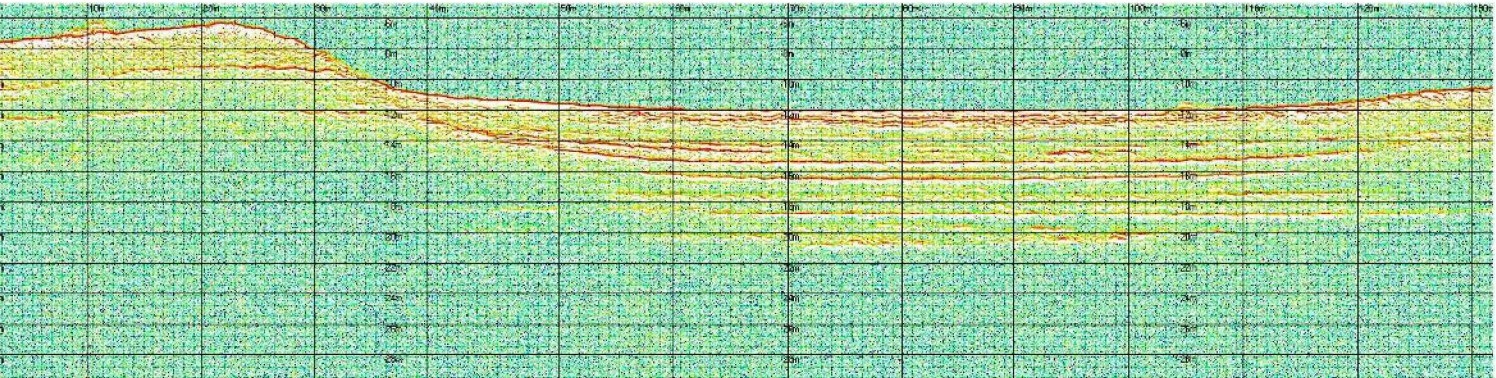
profilo sub-bottom 80



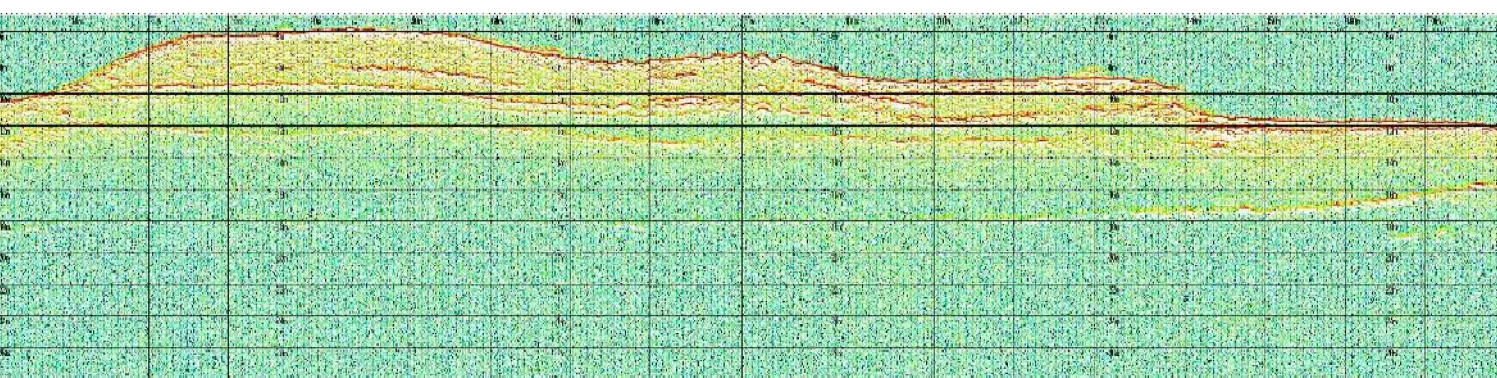
profilo sub-bottom 81



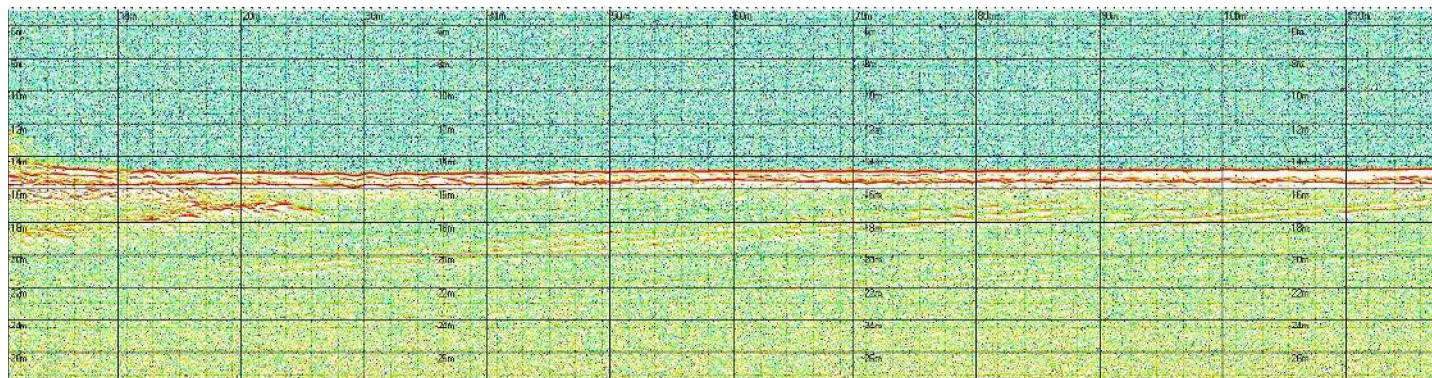
profilo sub-bottom 82



profilo sub-bottom 83



profilo sub-bottom 84



Autorità Portuale di Augusta

LAVORI DEL PRIMO STRALCIO E DEL SECONDO STRALCIO DELLA TERZA FASE DEL PORTO COMMERCIALE DI AUGUSTA - BANCHINE CONTAINERS -

IMPRESE:



Condotte S.p.A.

(MANDATARIA)



PIACENTINI COSTRUZIONI



Cosedil spa

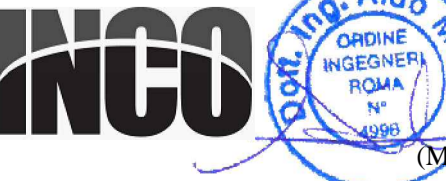
(MANDANTI)

PROGETTO ESECUTIVO DI FUSIONE ED INTEGRAZIONE DEL I E II STRALCIO

3						
2						
1						
0	081114	PRIMA EMISSIONE			P.PERCENTI	D.RIGOGLIOSO
REV.	DATA	EMISSIONE	N° ELAB.	REV.	VER.	APPR.
	1073	IG00	T	009	A	
SCALA: VARIE						

TITOLO ELABORATO: INQUADRAMENTO GENERALE STUDI E RELAZIONI SPECIALISTICHE Rilievo Sub Bottom Profiler - profili - tav.4 di 9

PROGETTAZIONE:



SIGMA INGEGNERIA s.r.l. Via della Libertà, 22/A 00187 ROMA (RM) Tel. 06/854542 - Fax 06/100790 C.F. e P.IVA 02530160002 Email: Sigma@sigmaing.it



RESPONSABILE DEL PROCEDIMENTO: Geom. Venerando Toscano