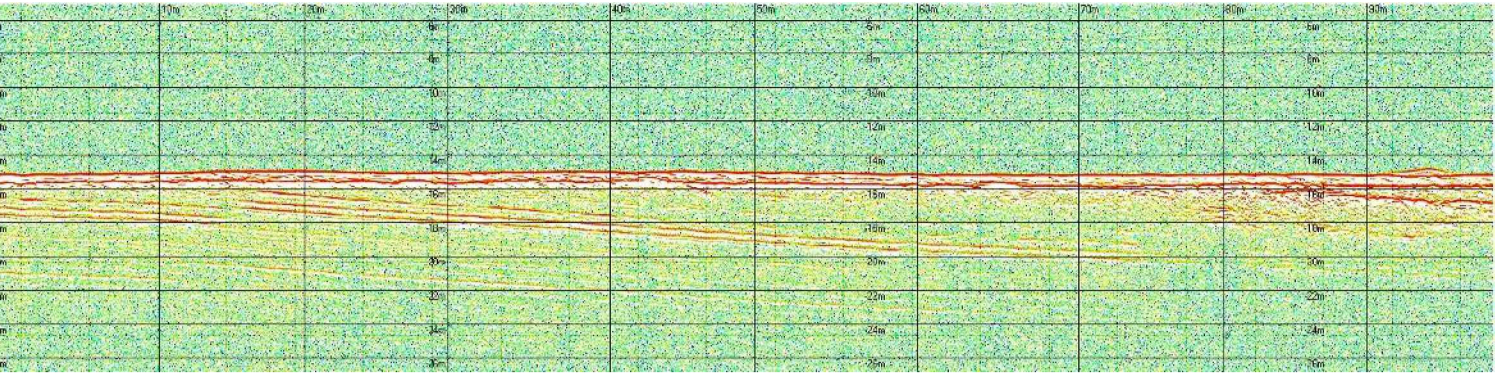
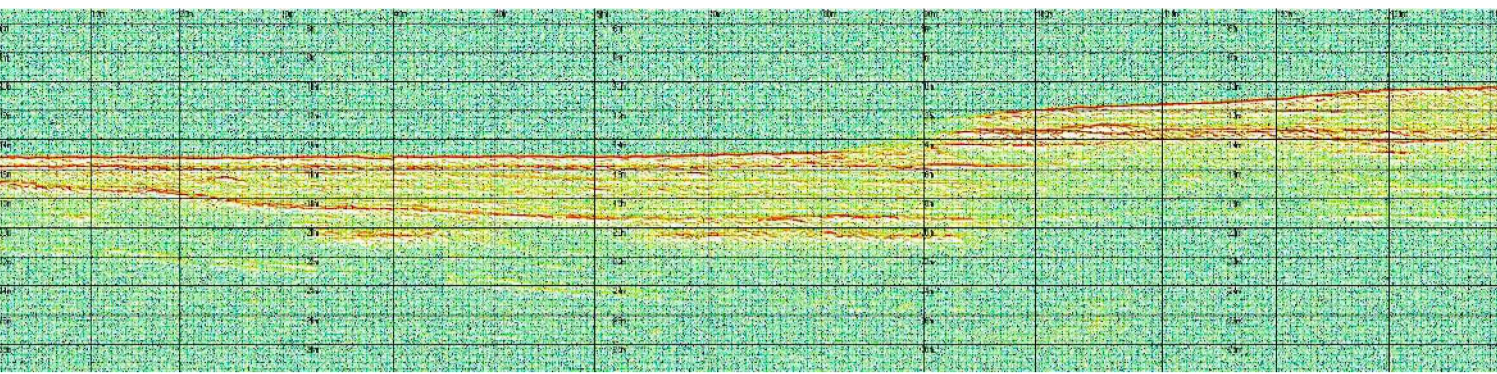


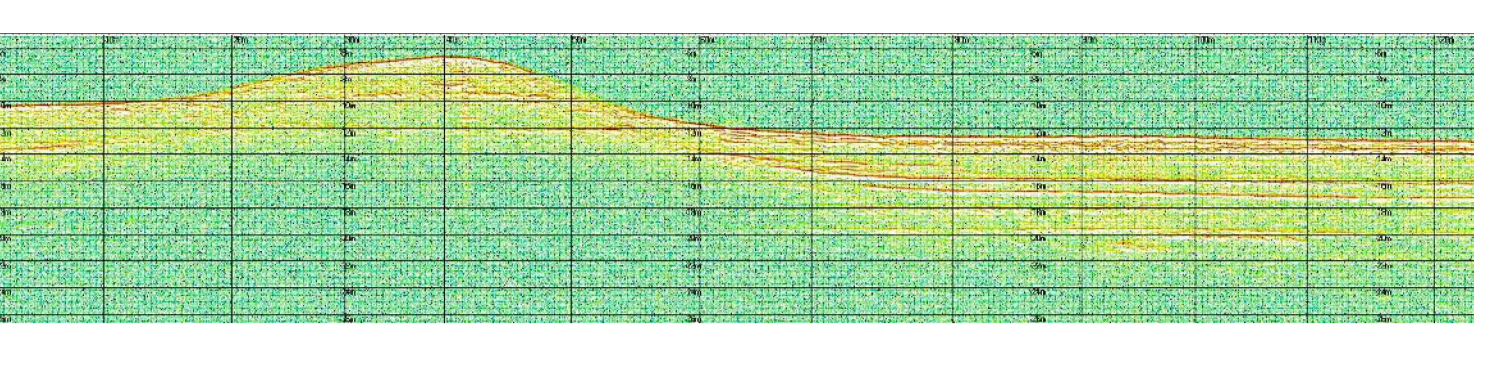
profilo sub-bottom 85



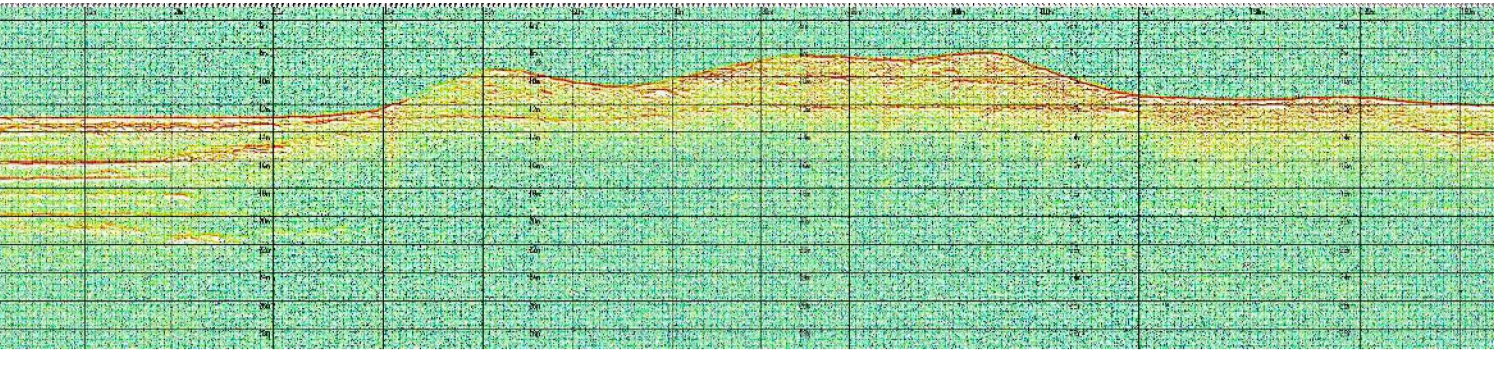
profilo sub-bottom 86



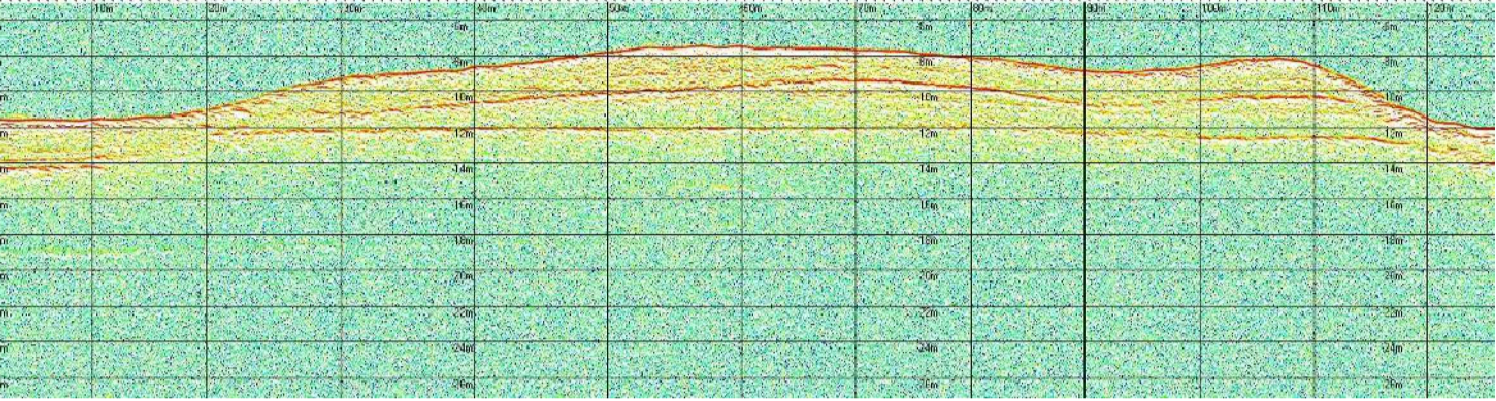
profilo sub-bottom 87



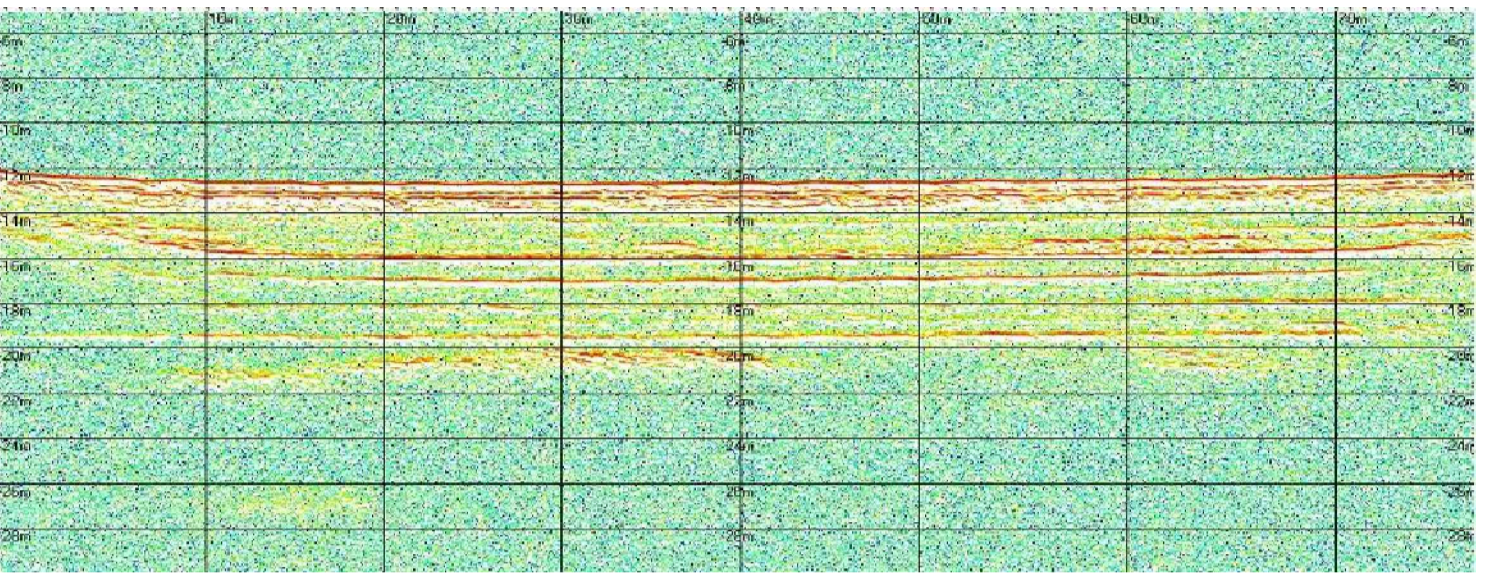
profilo sub-bottom 88



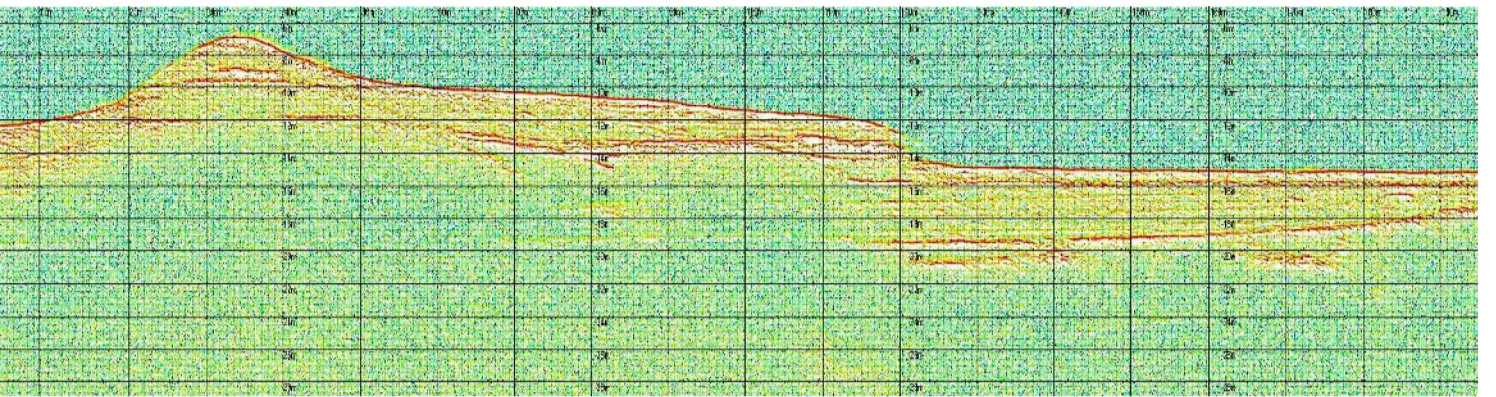
profilo sub-bottom 89



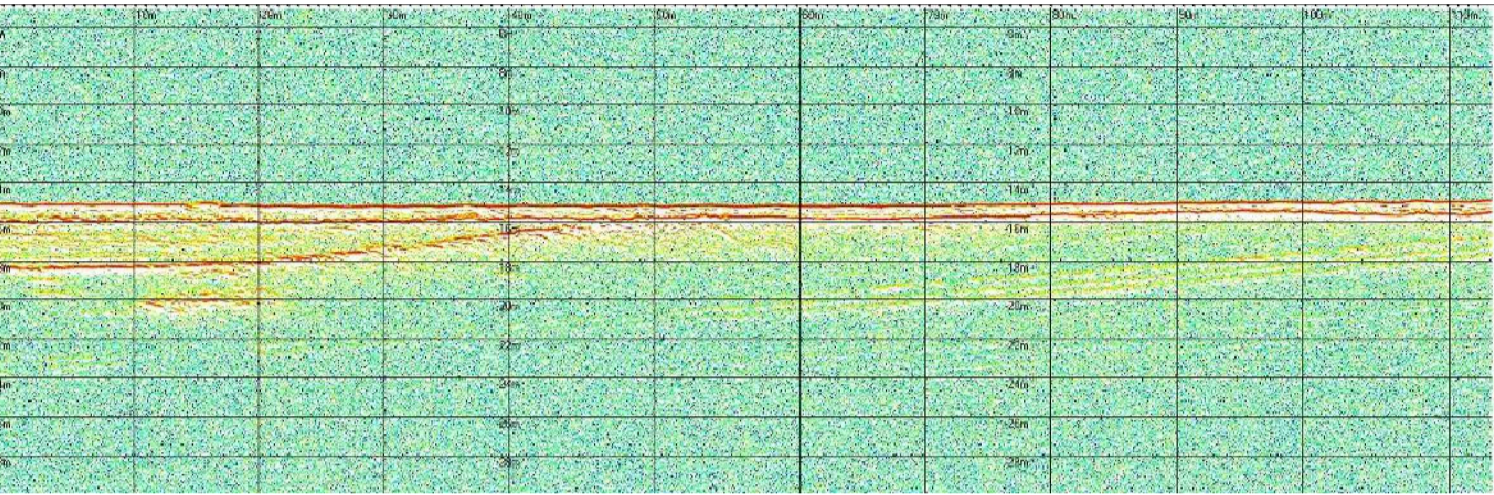
profilo sub-bottom 90



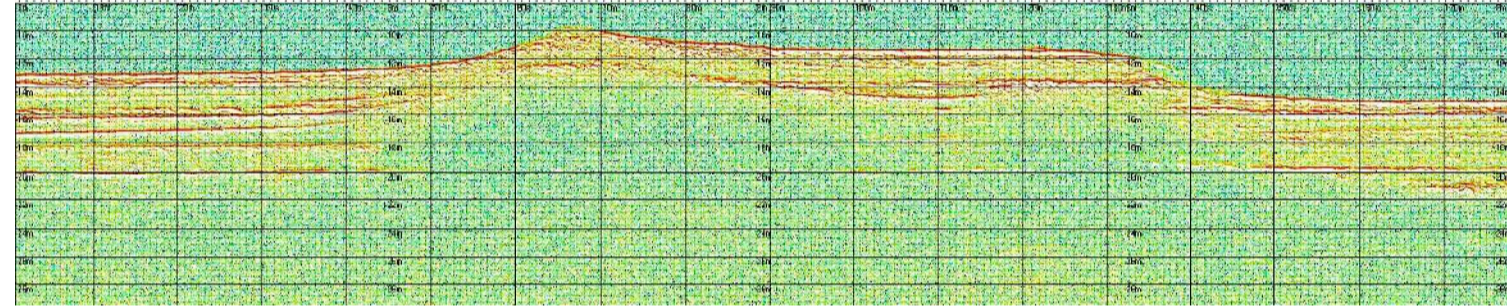
profilo sub-bottom 91



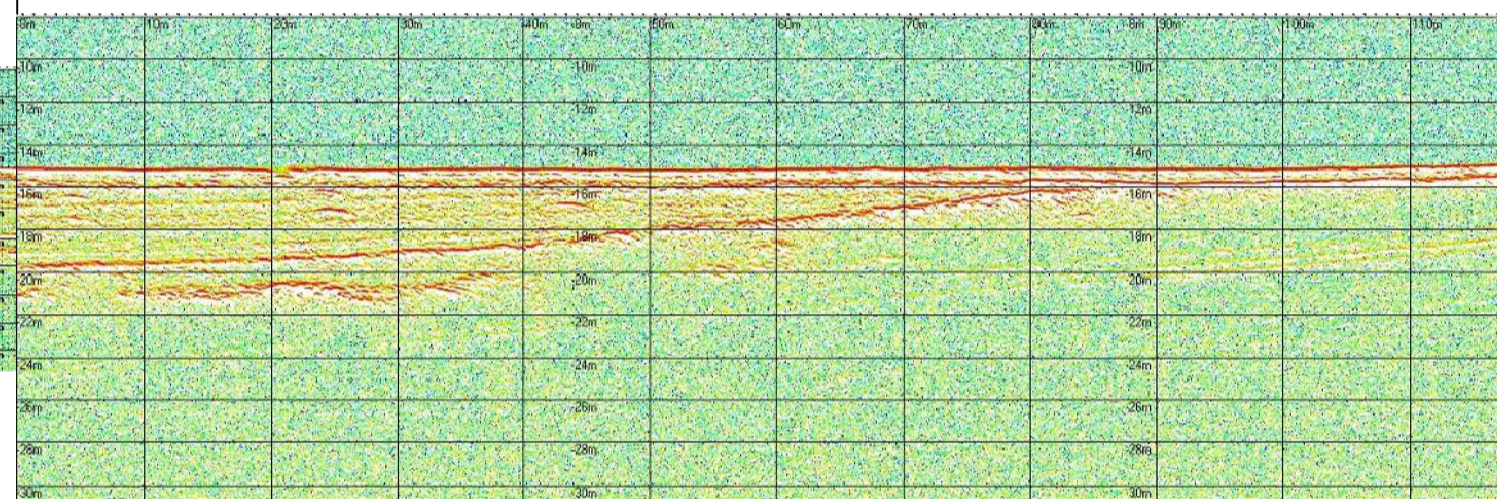
profilo sub-bottom 92



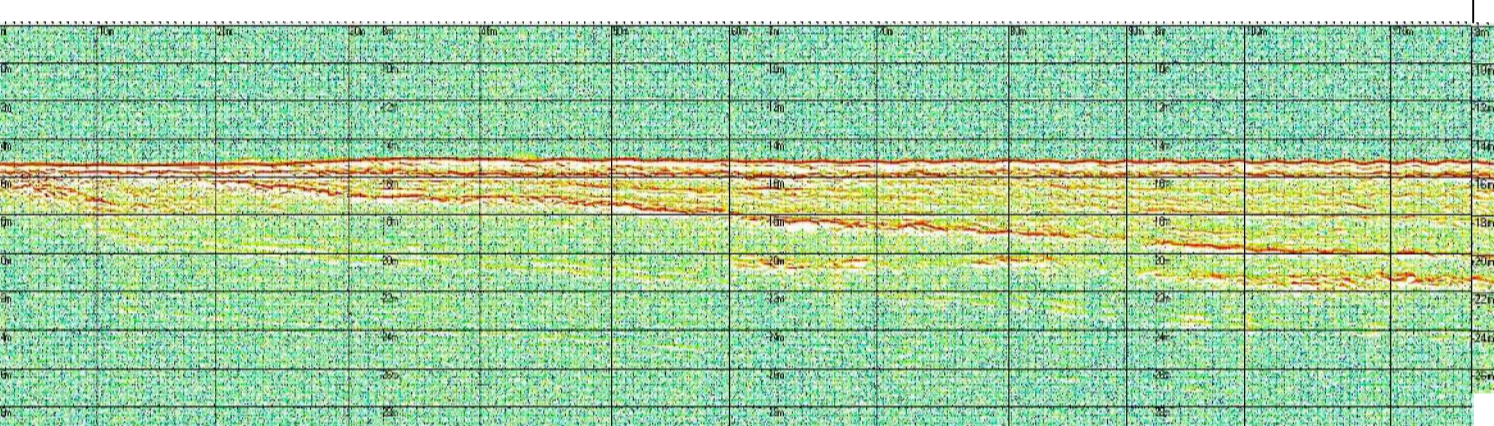
profilo sub-bottom 93



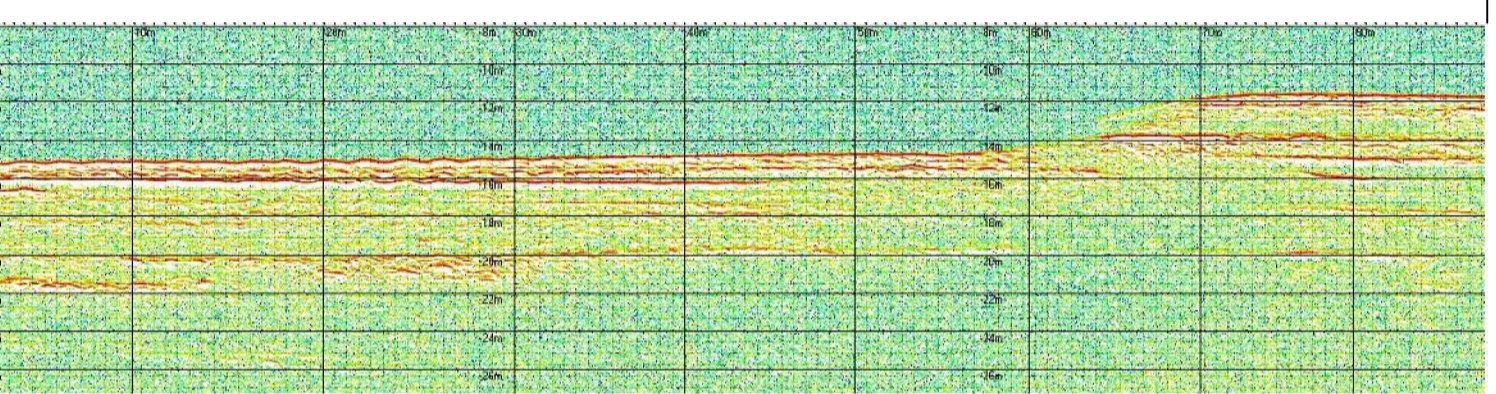
profilo sub-bottom 94



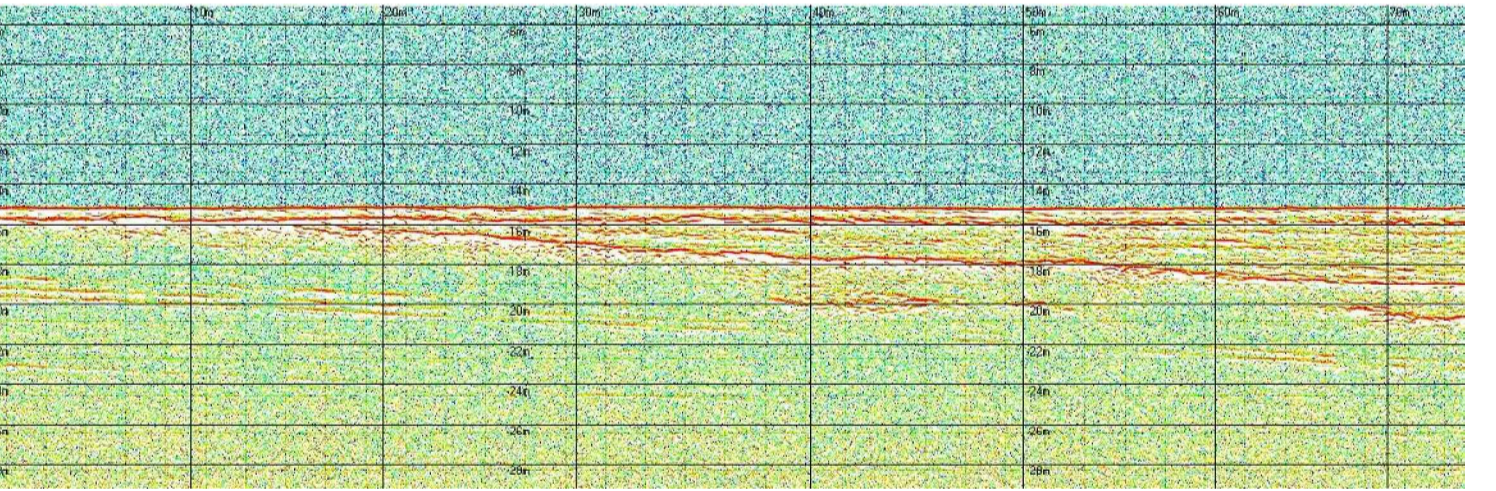
profilo sub-bottom 95



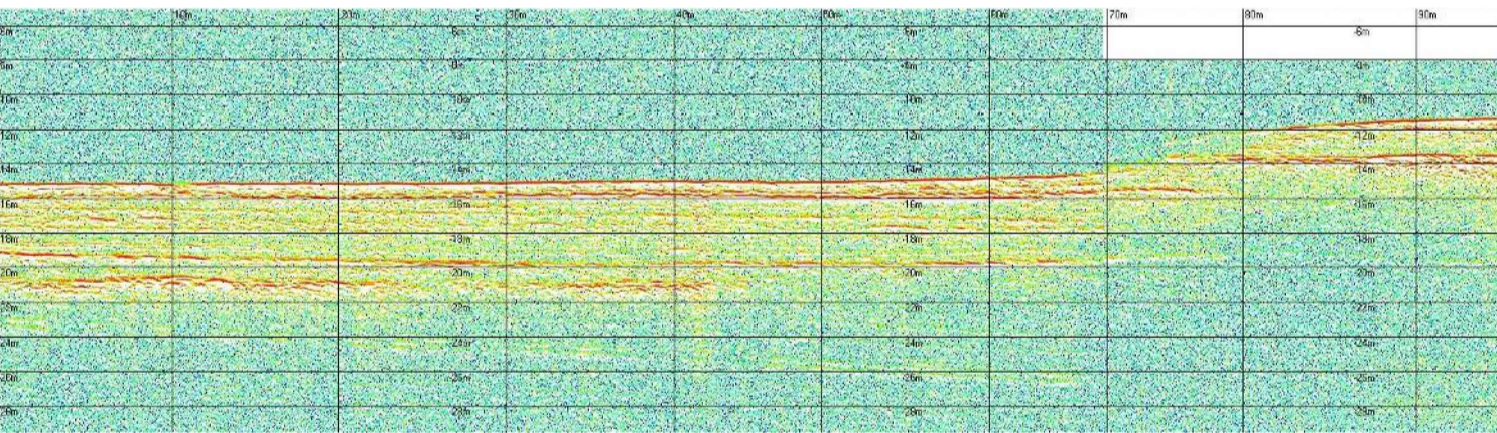
profilo sub-bottom 96



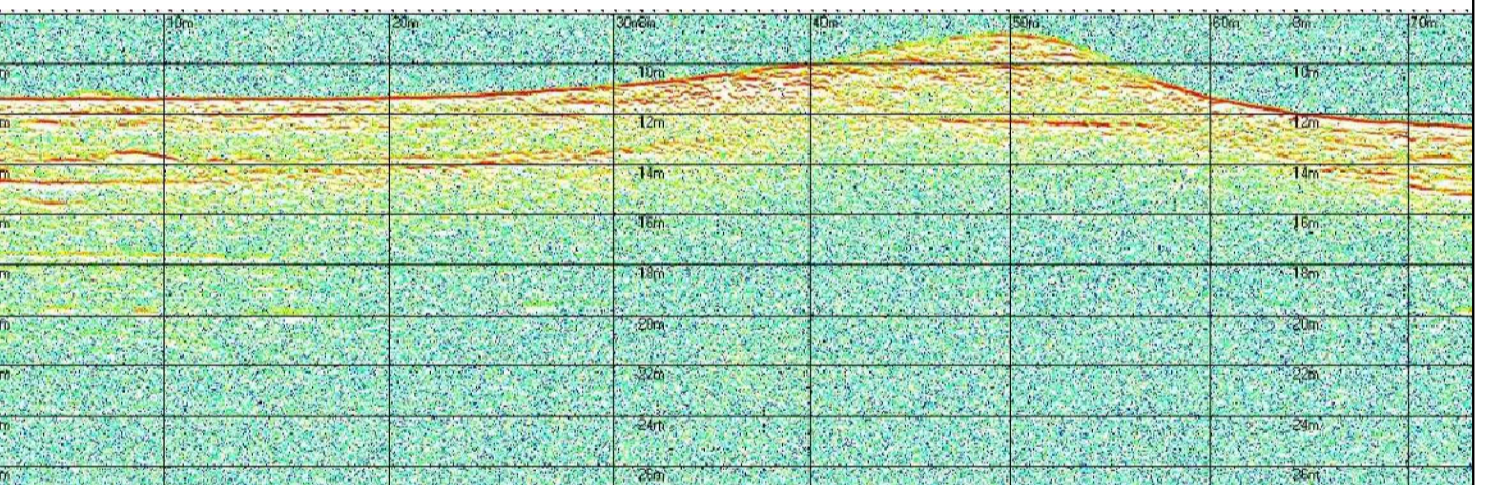
profilo sub-bottom 97



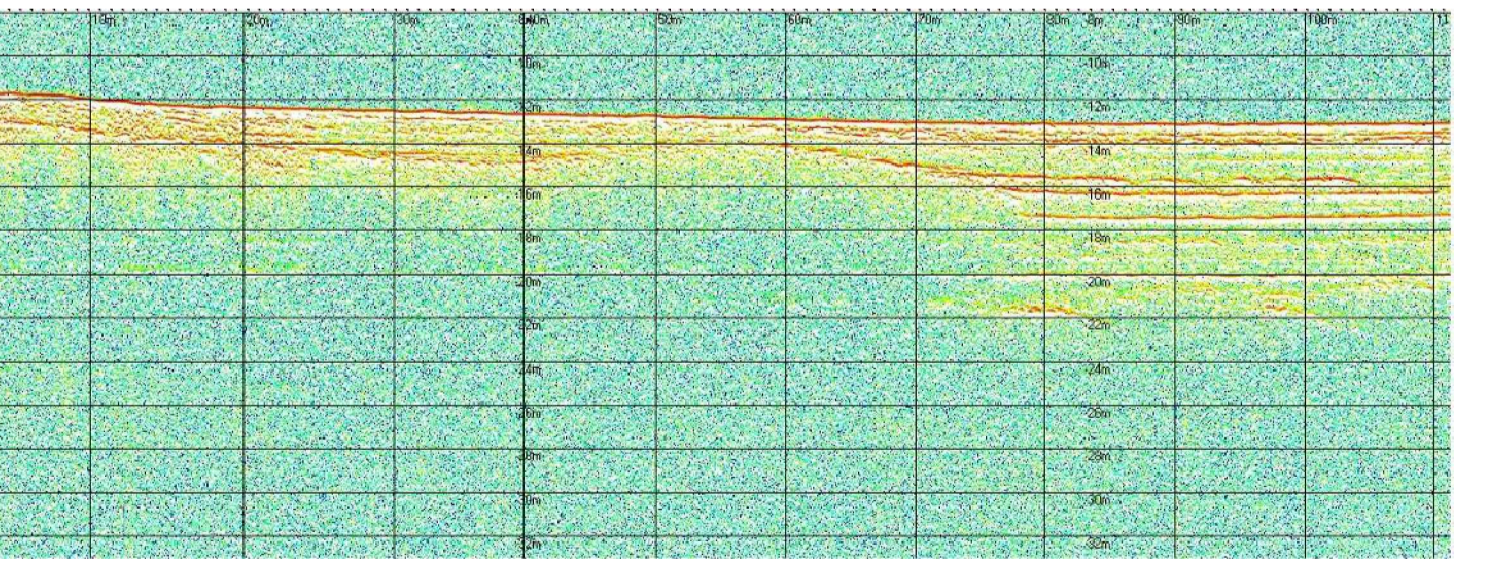
profilo sub-bottom 98



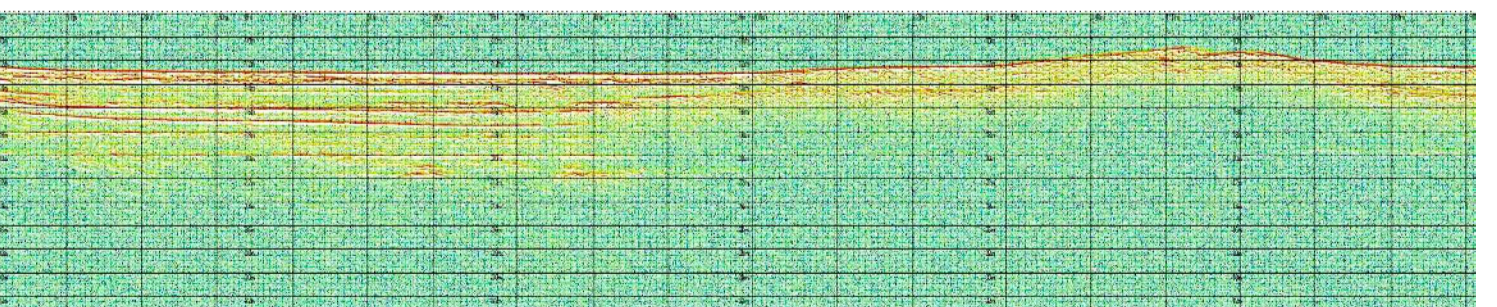
profilo sub-bottom 99



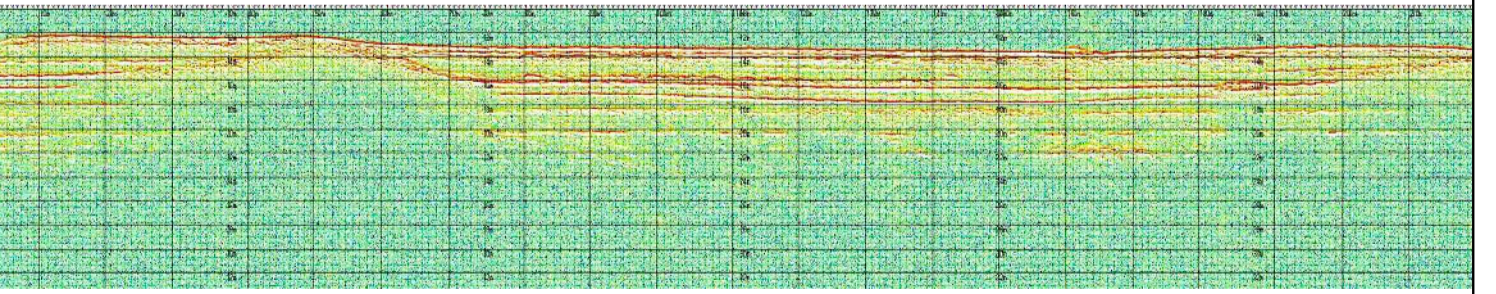
profilo sub-bottom 100



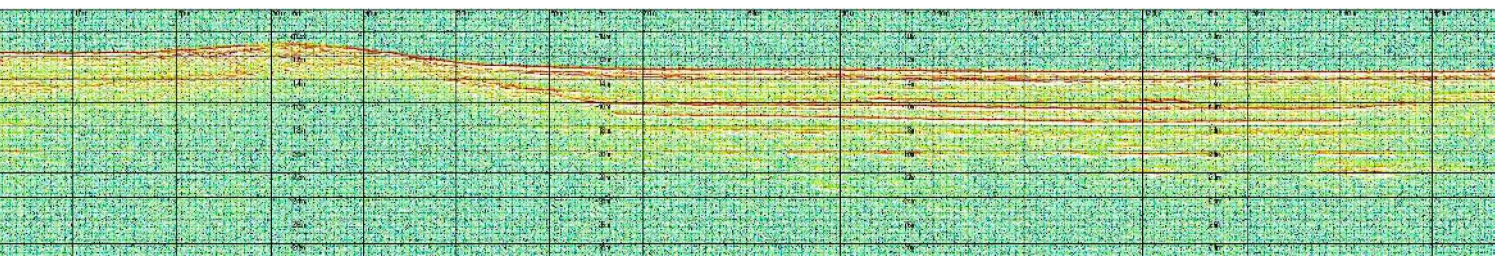
profilo sub-bottom 101



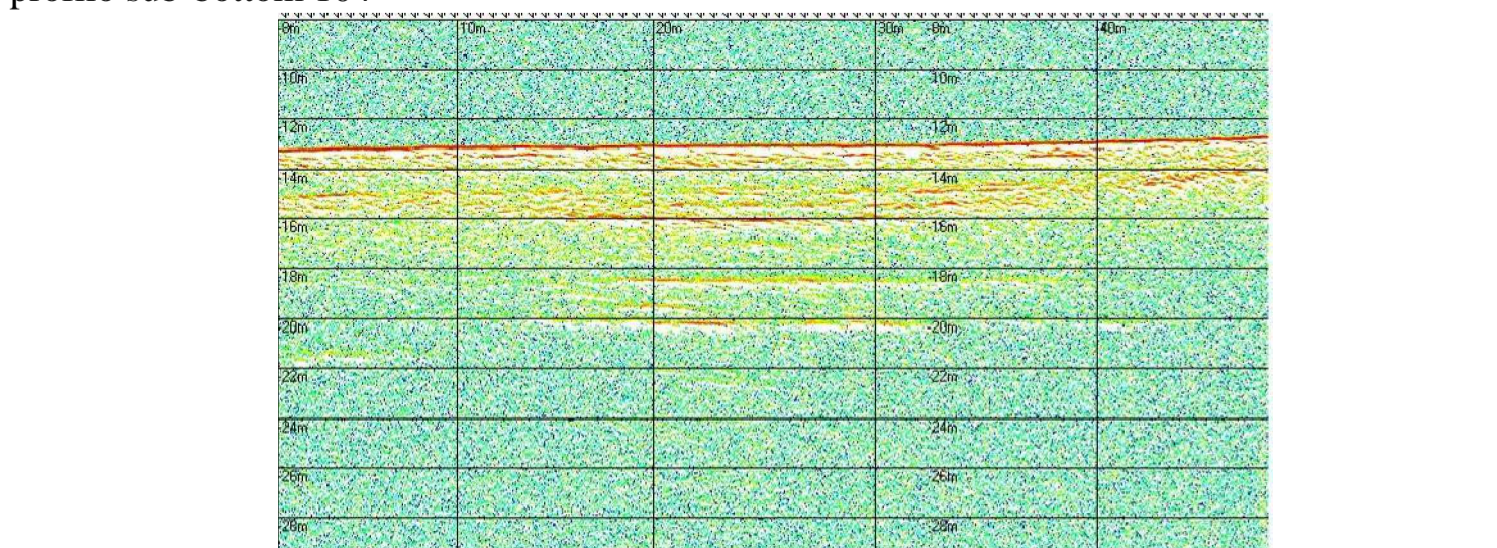
profilo sub-bottom 102



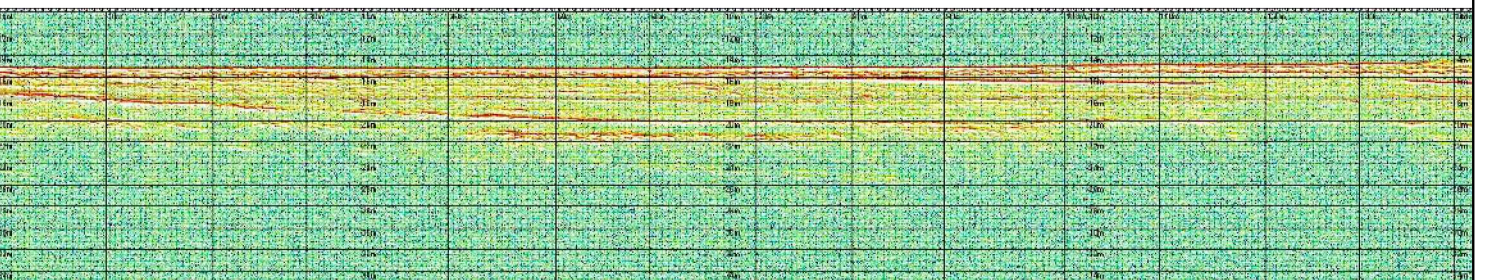
profilo sub-bottom 103



profilo sub-bottom 104



profilo sub-bottom 105



Autorità Portuale di Augusta

LAVORI DEL PRIMO STRALCIO E DEL SECONDO STRALCIO DELLA TERZA FASE DEL PORTO COMMERCIALE DI AUGUSTA - BANCHINE CONTAINERS -

IMPRESE:

PROGETTO ESECUTIVO DI FUSIONE ED INTEGRAZIONE DEL I E II STRALCIO

3						
2						
1						
0	081114	PRIMA EMISSIONE			P. PERCENTI	D. RIGIOLIOSO
REV.	DATA	EMISSIONE			RED.	VER.
PROGETTO	OPERA	TIPO ELAB.	N° ELAB.	REV.	SCALA: VARIE	
1073	IG00	T	010	A		

TITOLO ELABORATO: INQUADRAMENTO GENERALE STUDI E RELAZIONI SPECIALISTICHE Rilievo Sub Bottom Profiler - profili - tav.5 di 9

PROGETTAZIONE:

RESPONSABILE DEL PROCEDIMENTO: Geom. Venerando Toscano