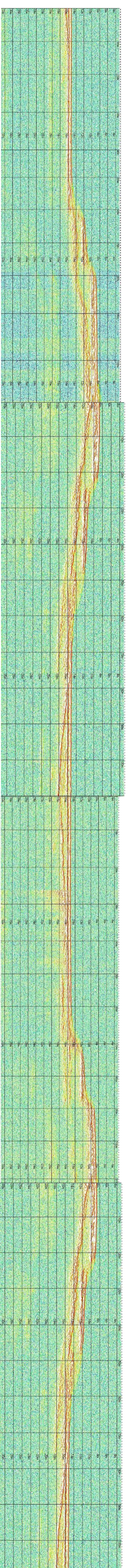
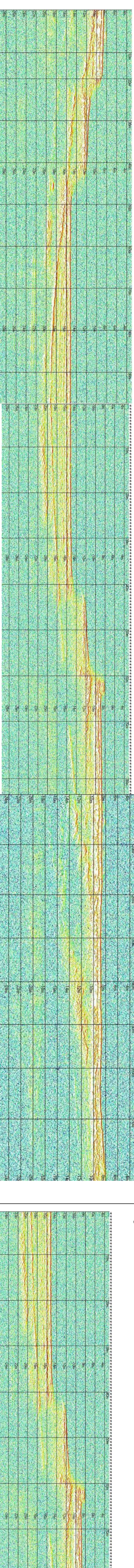


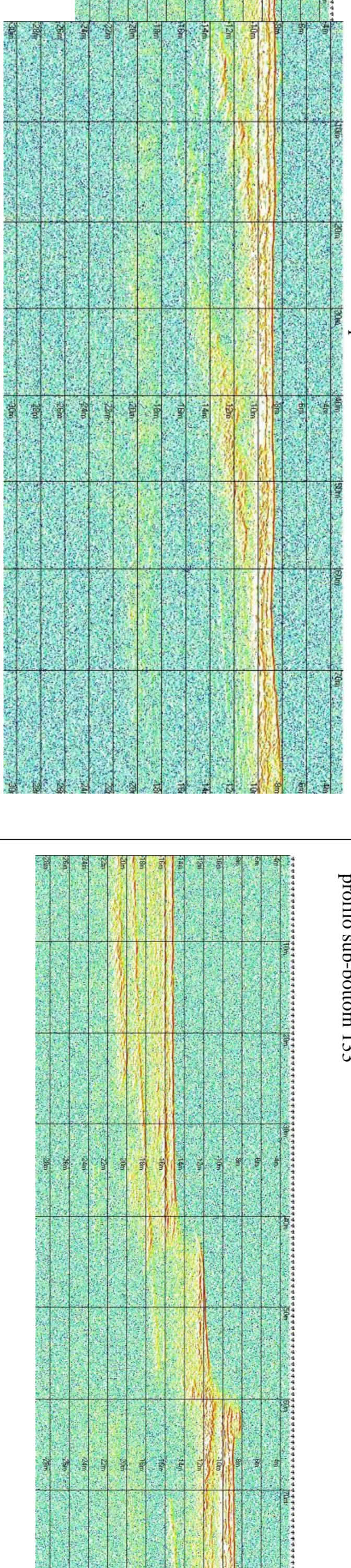
profilo sub-bottom 127



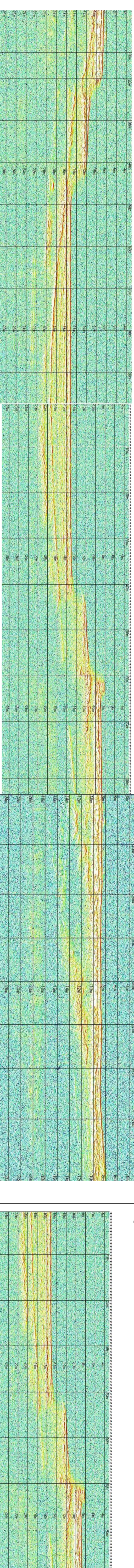
profilo sub-bottom 128



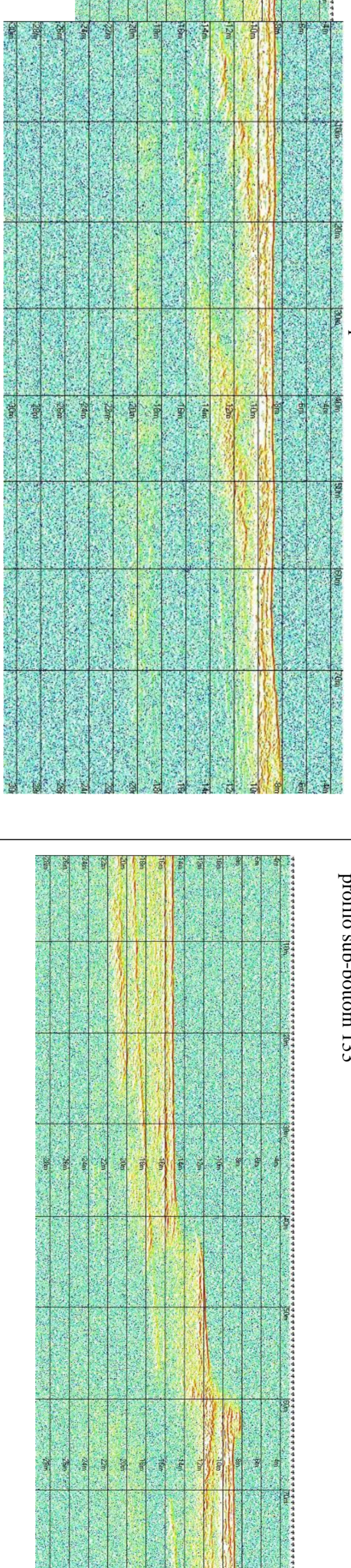
profilo sub-bottom 129



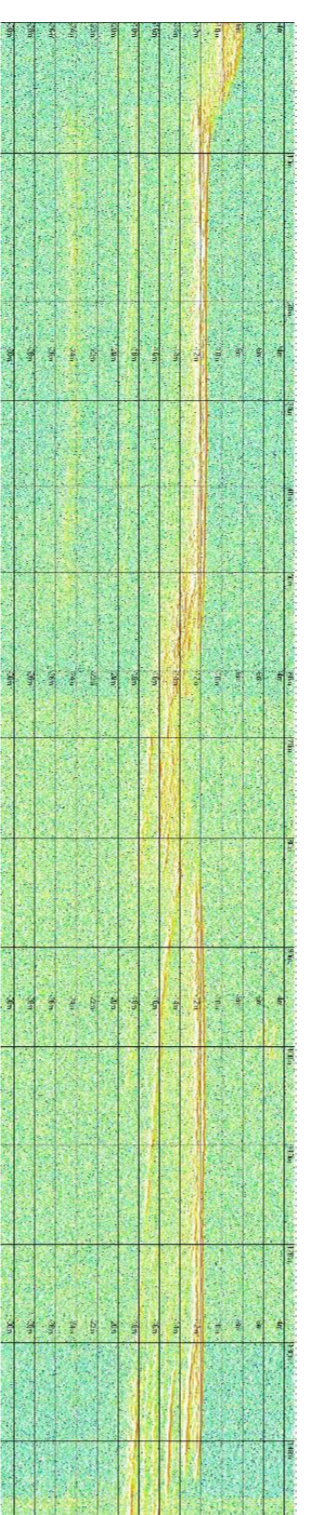
profilo sub-bottom 130



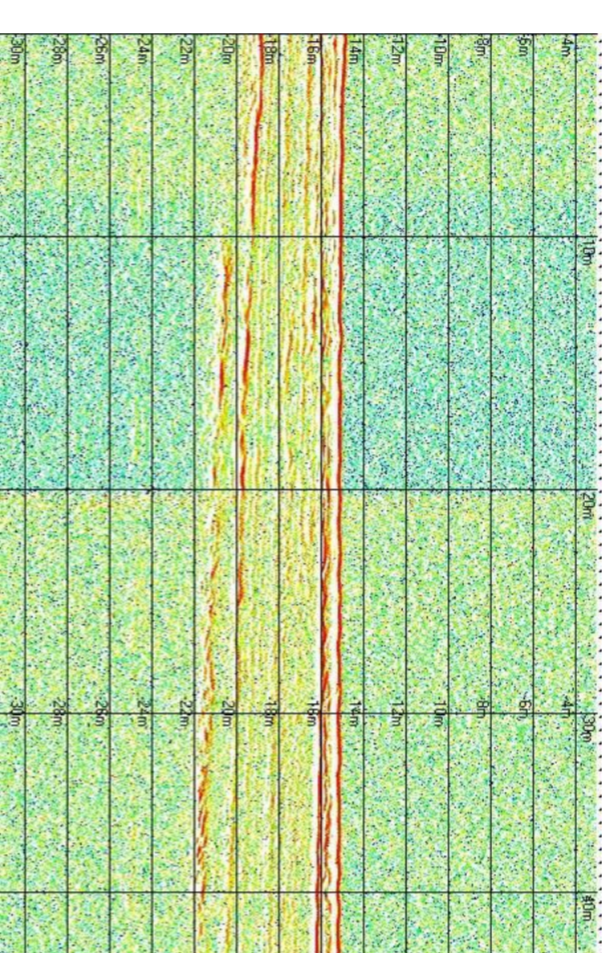
profilo sub-bottom 131



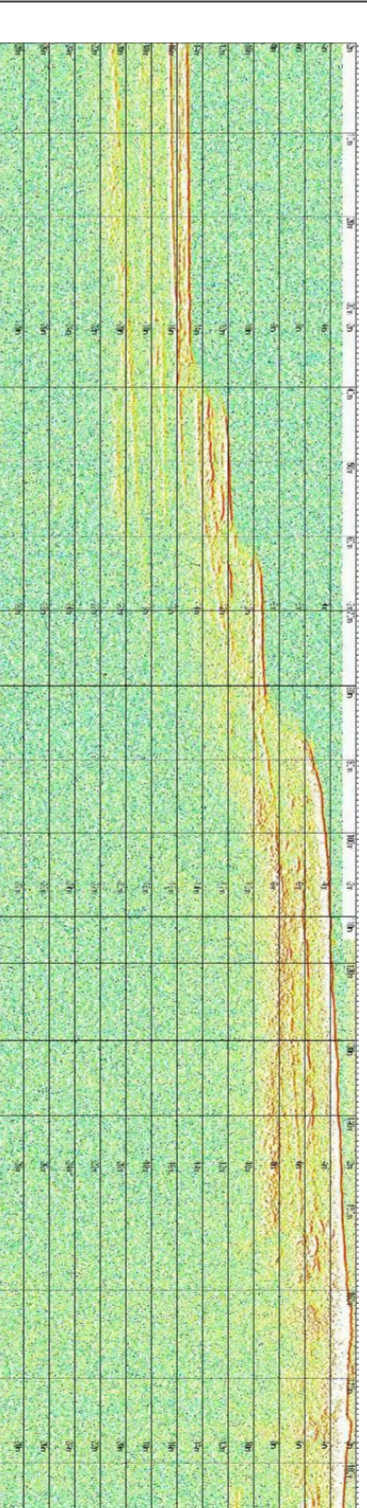
profilo sub-bottom 134



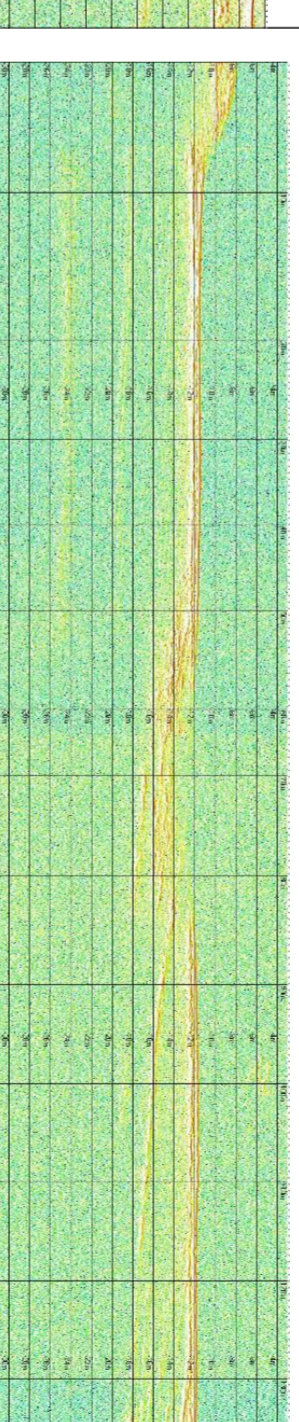
profilo sub-bottom 135



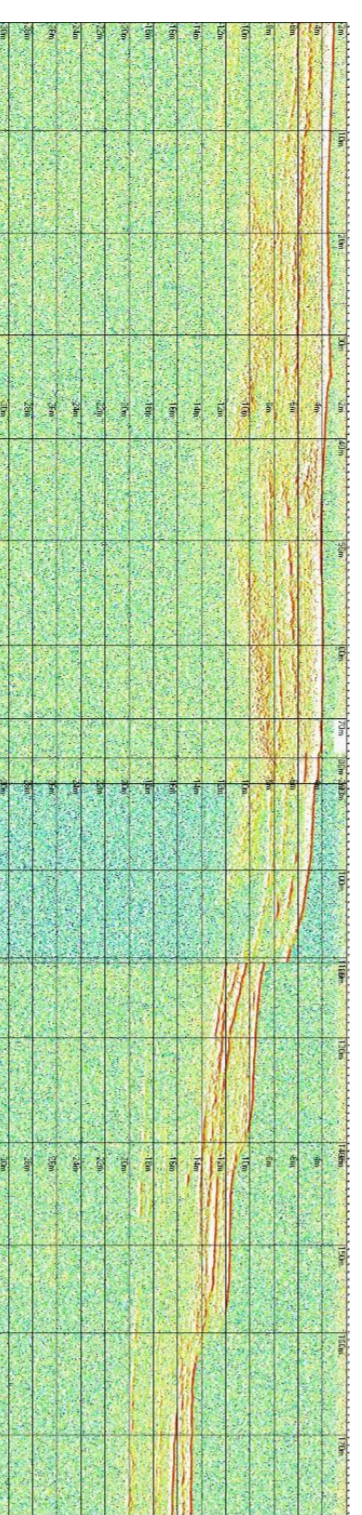
profilo sub-bottom 136



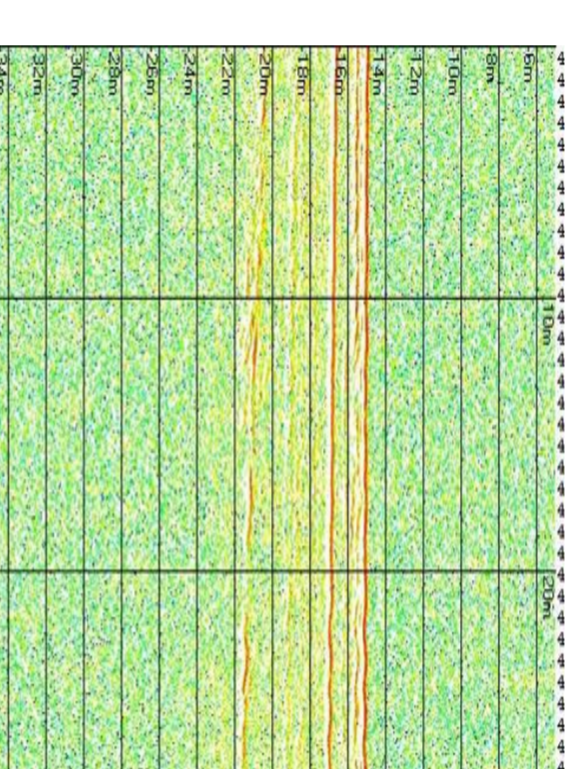
profilo sub-bottom 137



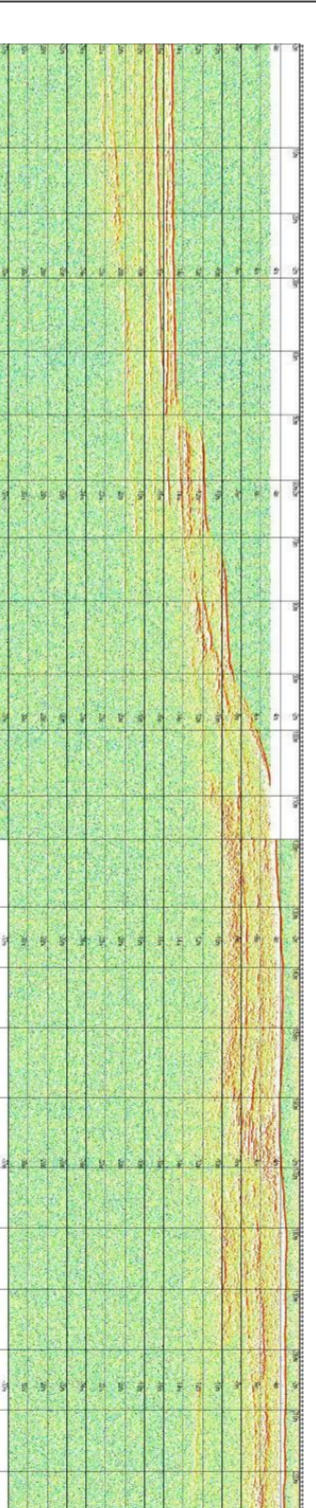
profilo sub-bottom 138



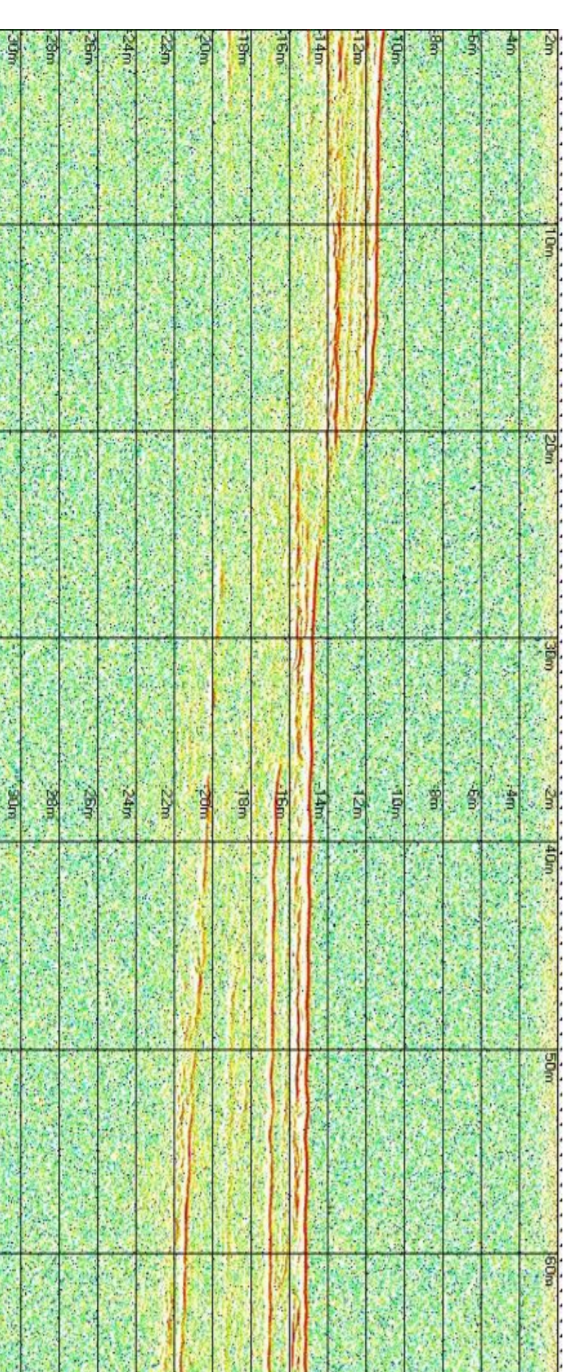
profilo sub-bottom 139



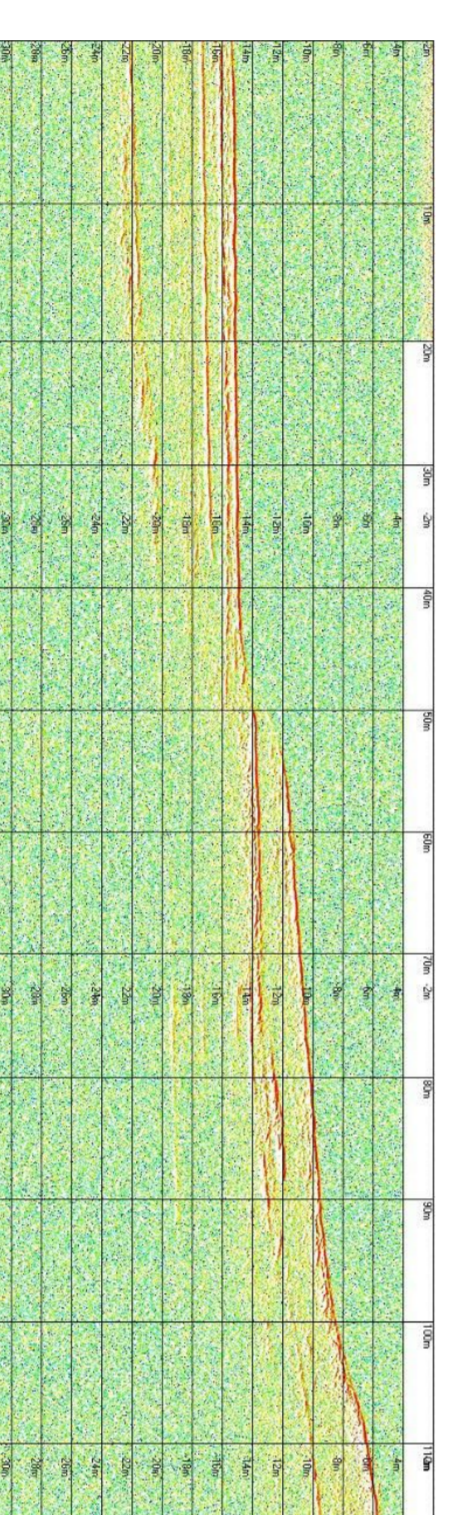
profilo sub-bottom 140



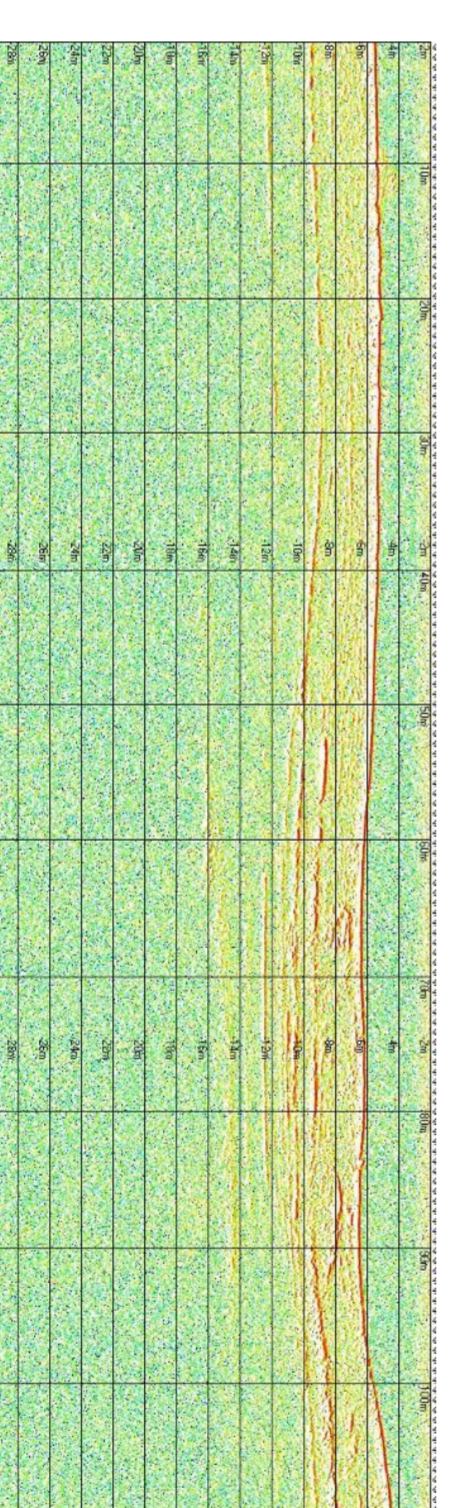
profilo sub-bottom 141



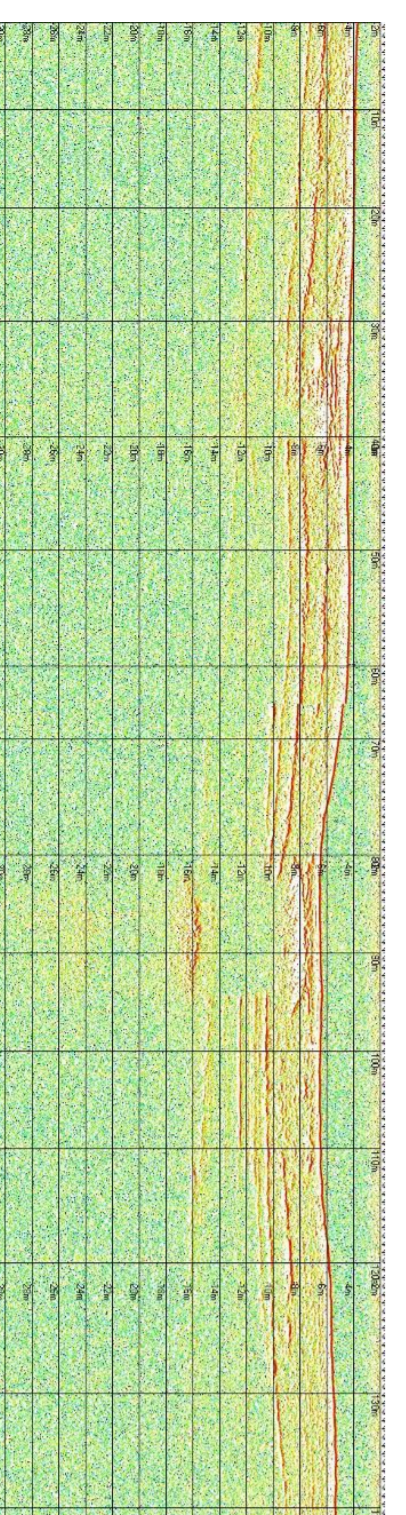
profilo sub-bottom 142



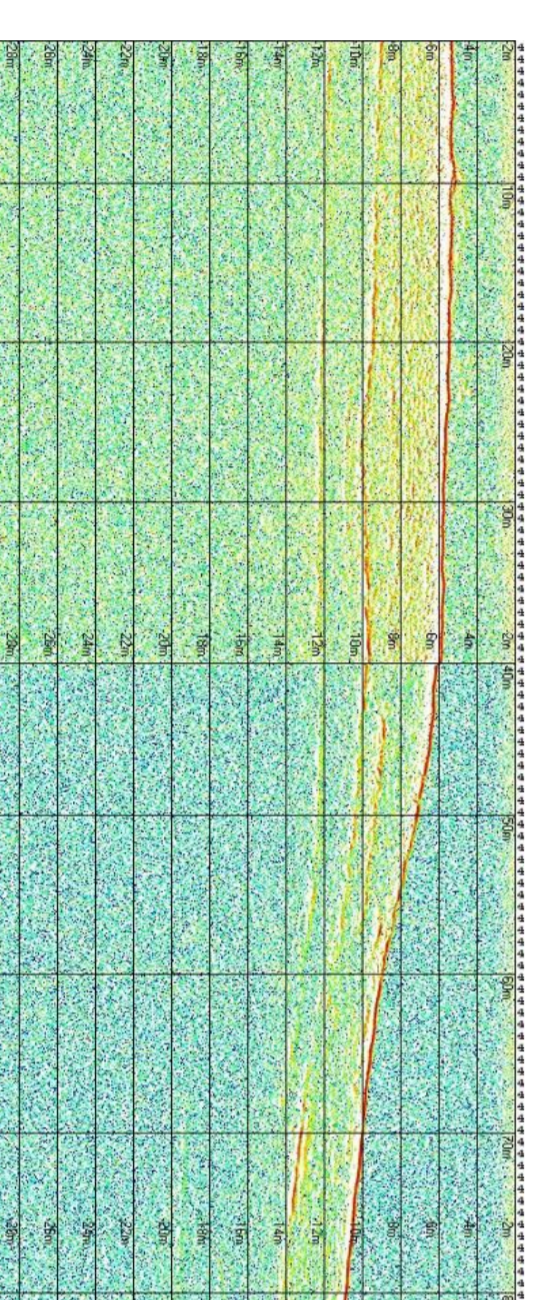
profilo sub-bottom 143



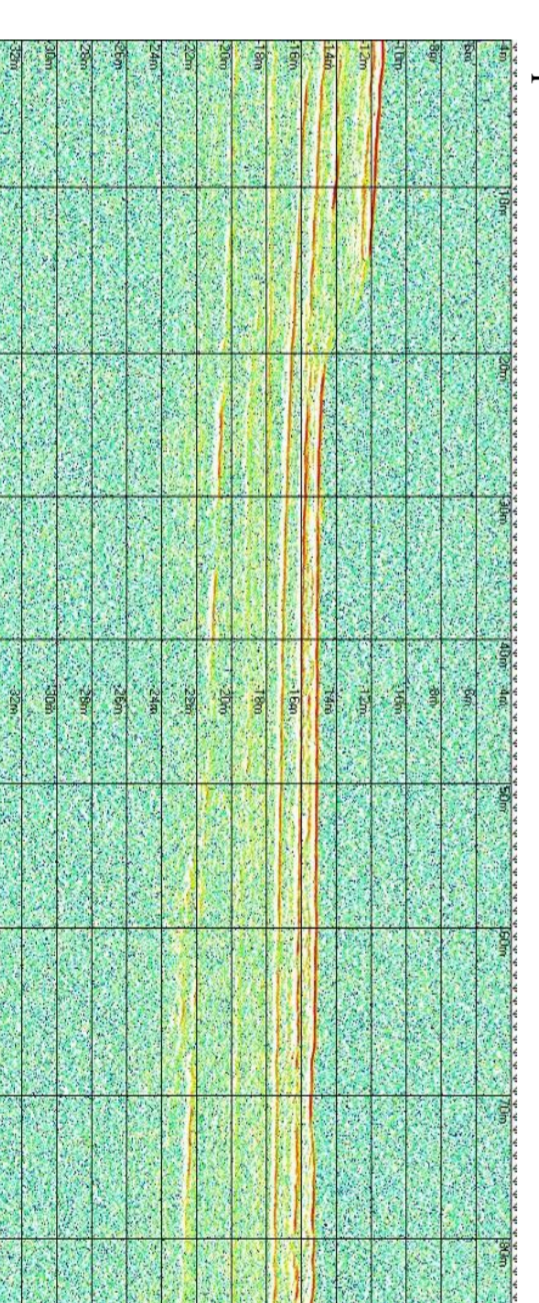
profilo sub-bottom 144



profilo sub-bottom 145



profilo sub-bottom 146



Autorità Portuale di Augusta

LAVORI DEL PRIMO STRALCIO E DEL SECONDO STRALCIO
DELLA TERZA FASE DEL PORTO COMMERCIALE DI AUGUSTA
- BANCHINE CONTAINERS -

IMPRESE:

Condotte s.p.a. **PIACENTINI**
Costruzioni s.p.a. **Cosedil** spa

PROGETTO ESECUTIVO DI FUSIONE ED INTEGRAZIONE DEL I E II STRALCIO

3									
2									
1									
0	0	8	1	1	1	4			
REV.	DATA	OPERA	TIPO ELAB.	N° ELAB.	REV.	PARSONI	IBRIGOLLO	FABRIZIO	VER.
1	07/3	I	G	0	0				
			T	0	1				
				2					
					A				
									1:1.000

TITOLO ELABORATO:

INQUADRAMENTO GENERALE
STUDI E RELAZIONI SPECIALISTICHE
Rilievo Sub Bottom Profiler - profili - tav.7 di 9

PROGETTAZIONE:

INGEO s.p.a.

SOMA INGEGNERIA s.p.a.

RESPONSABILI E DEL PROCEDIMENTO:
Geom. Venerando Toscano

VENERANDO TOSCANO
AMM. DIST. 10/10/2011