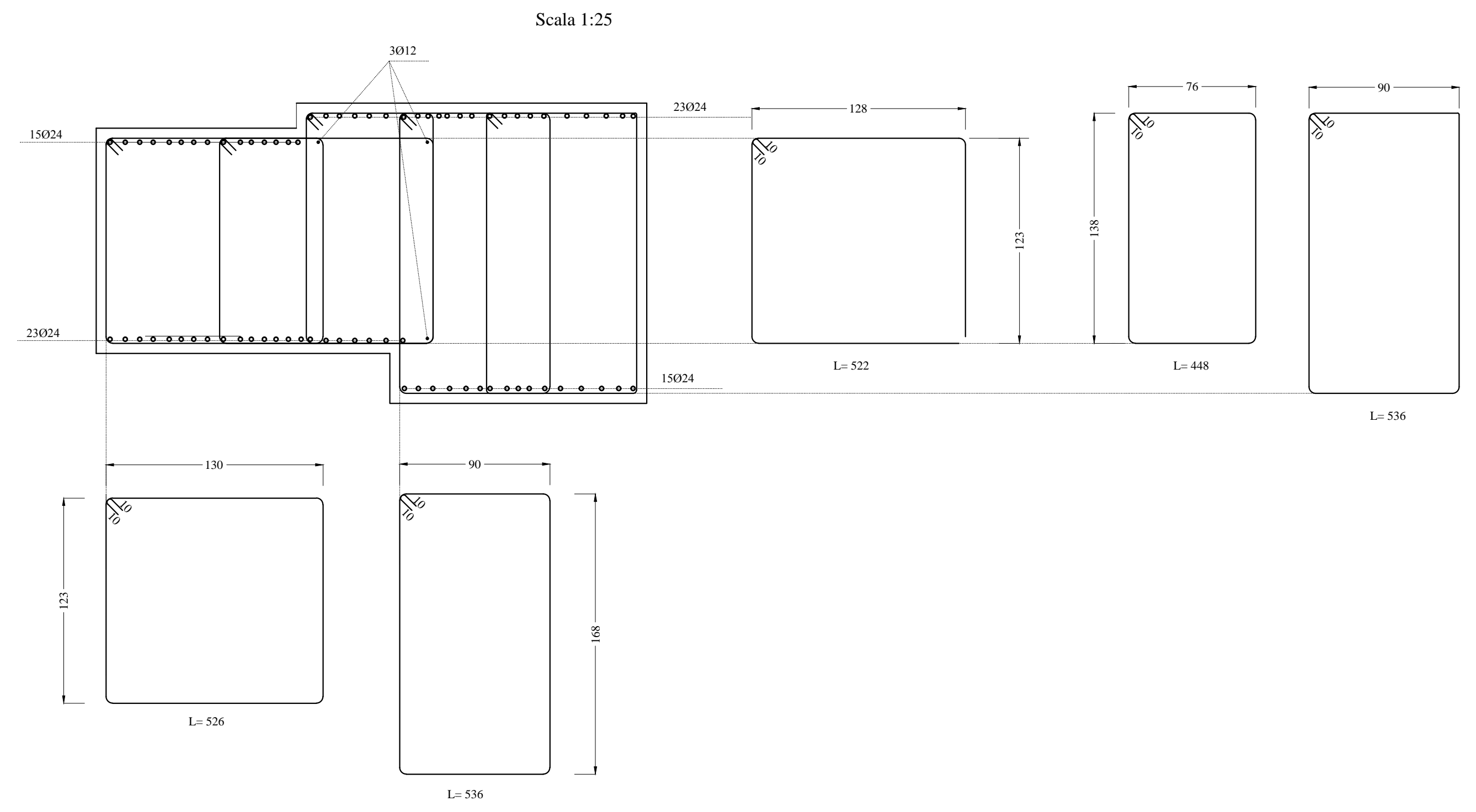
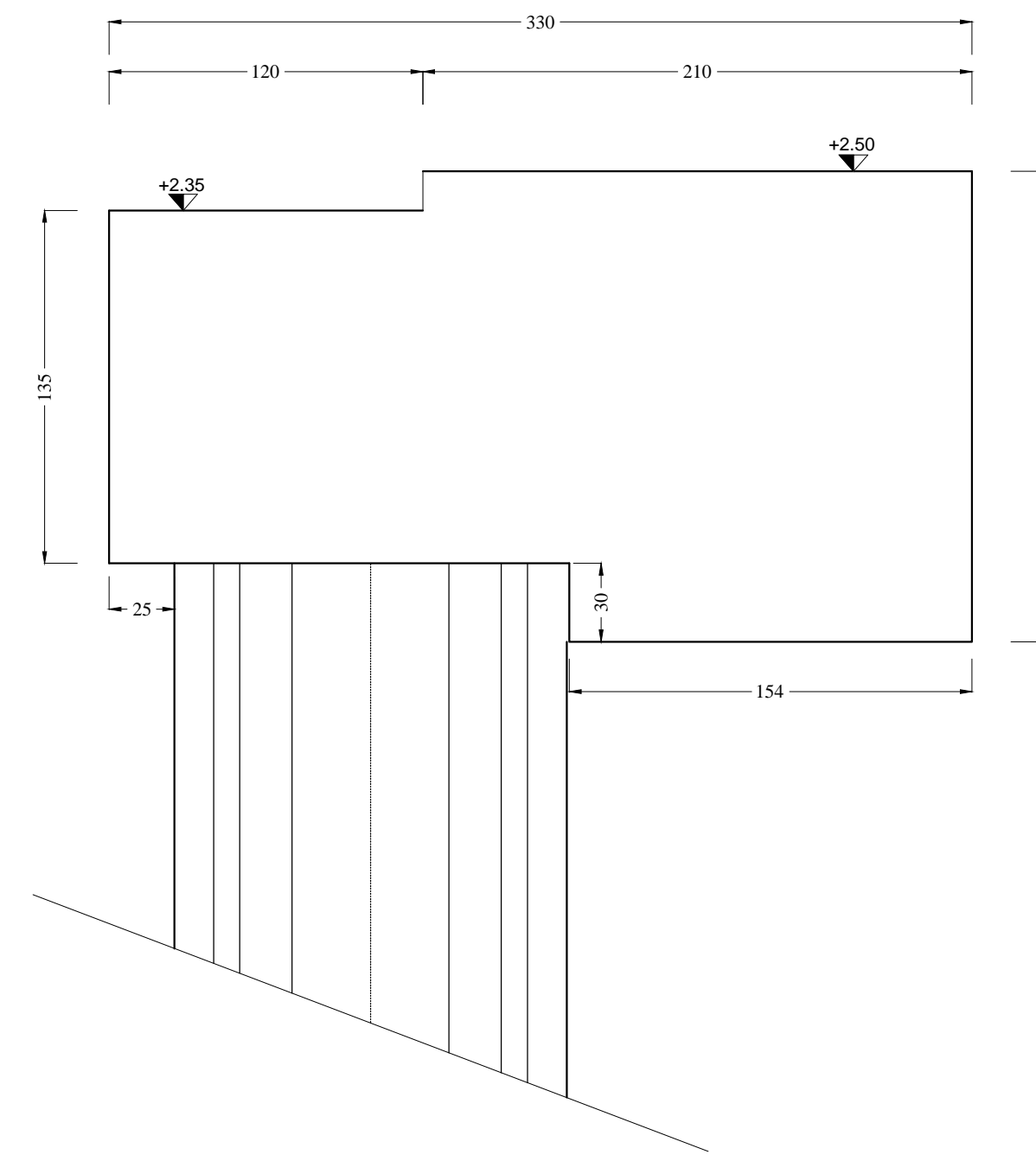
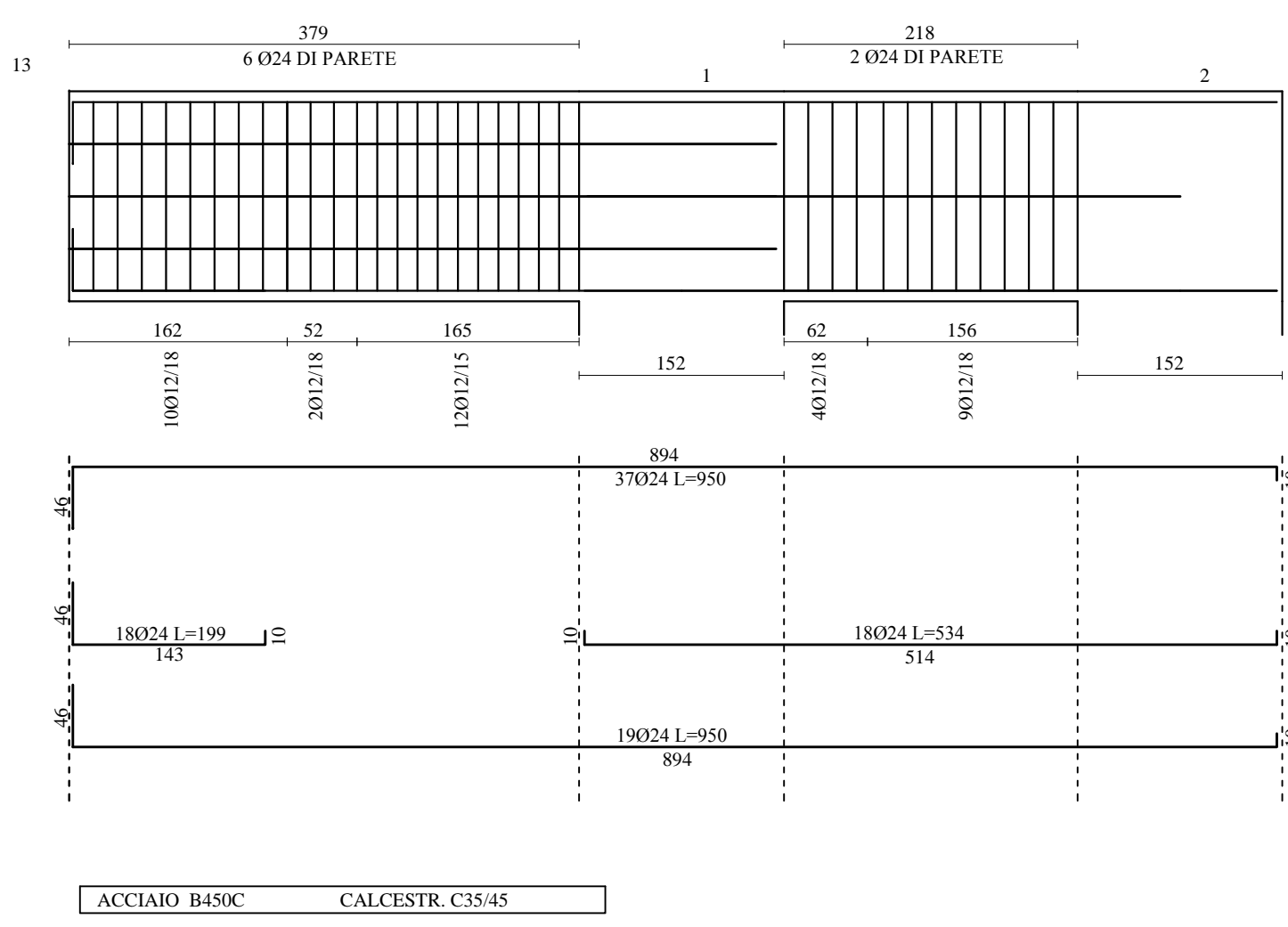
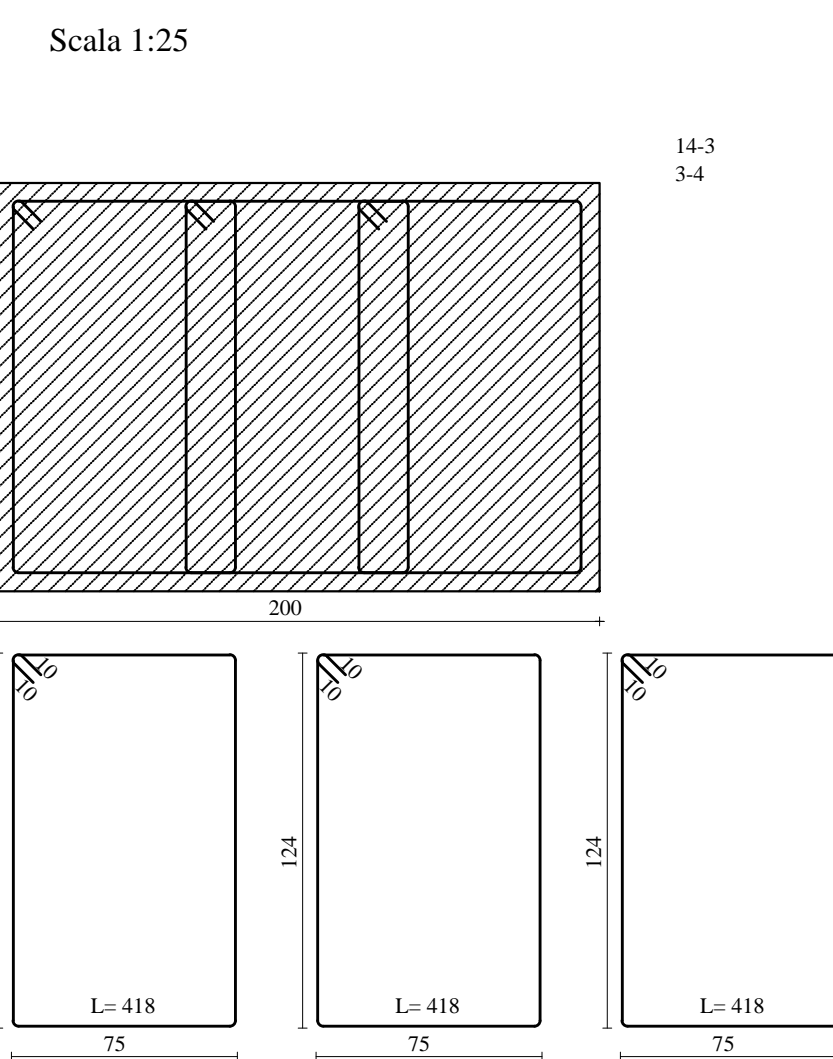
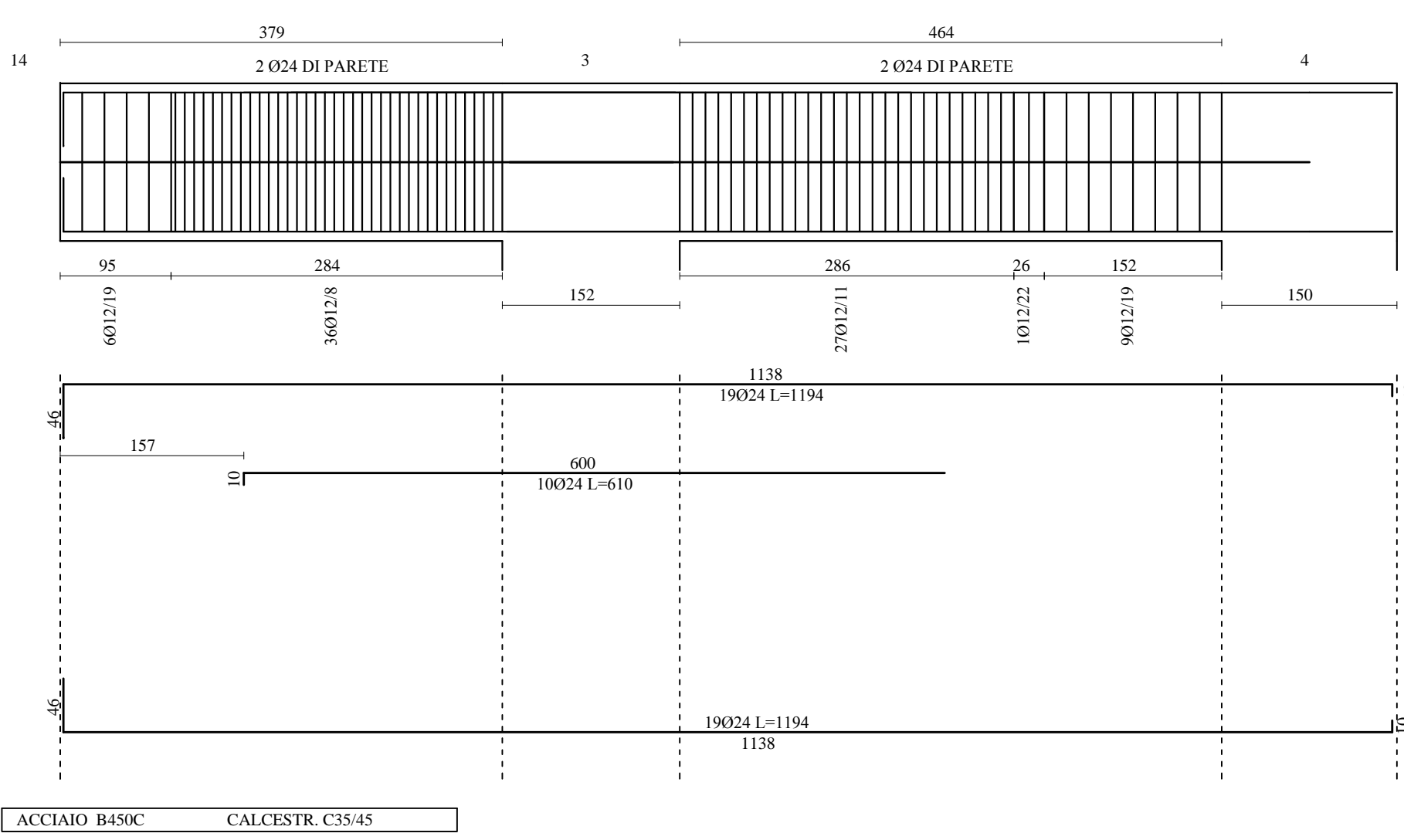


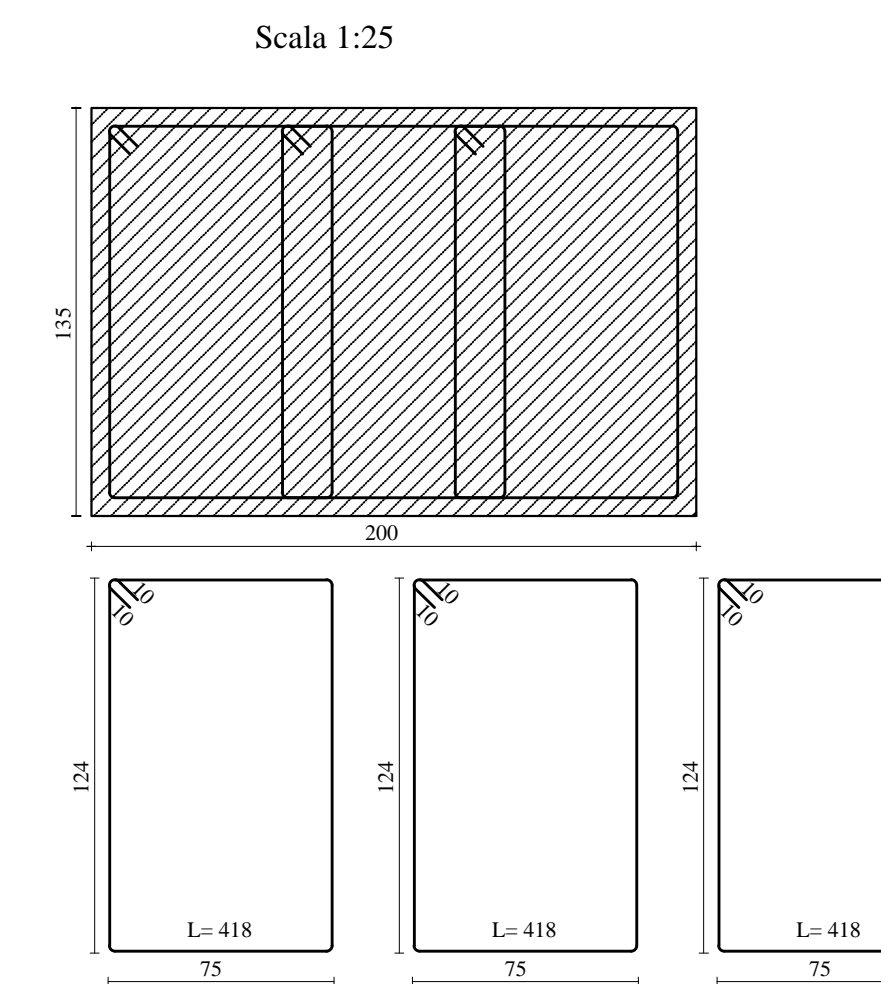
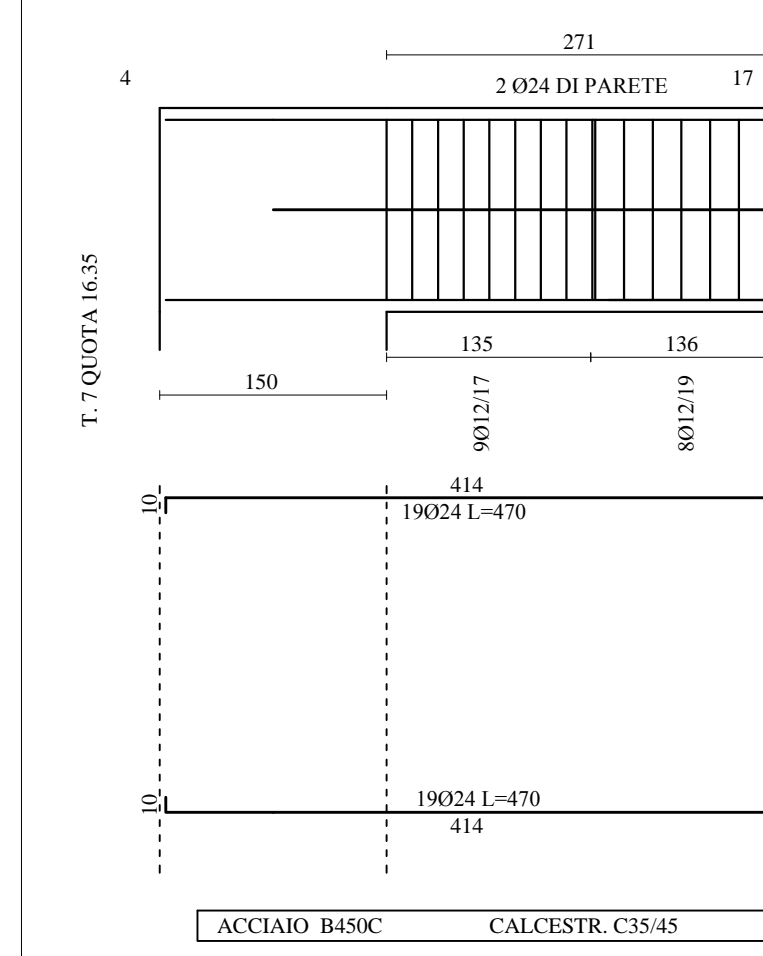
TRAVE LONGITUDINALE 13-1-2 Raccordo Banchina esistente - Concio A
Scala 1:50



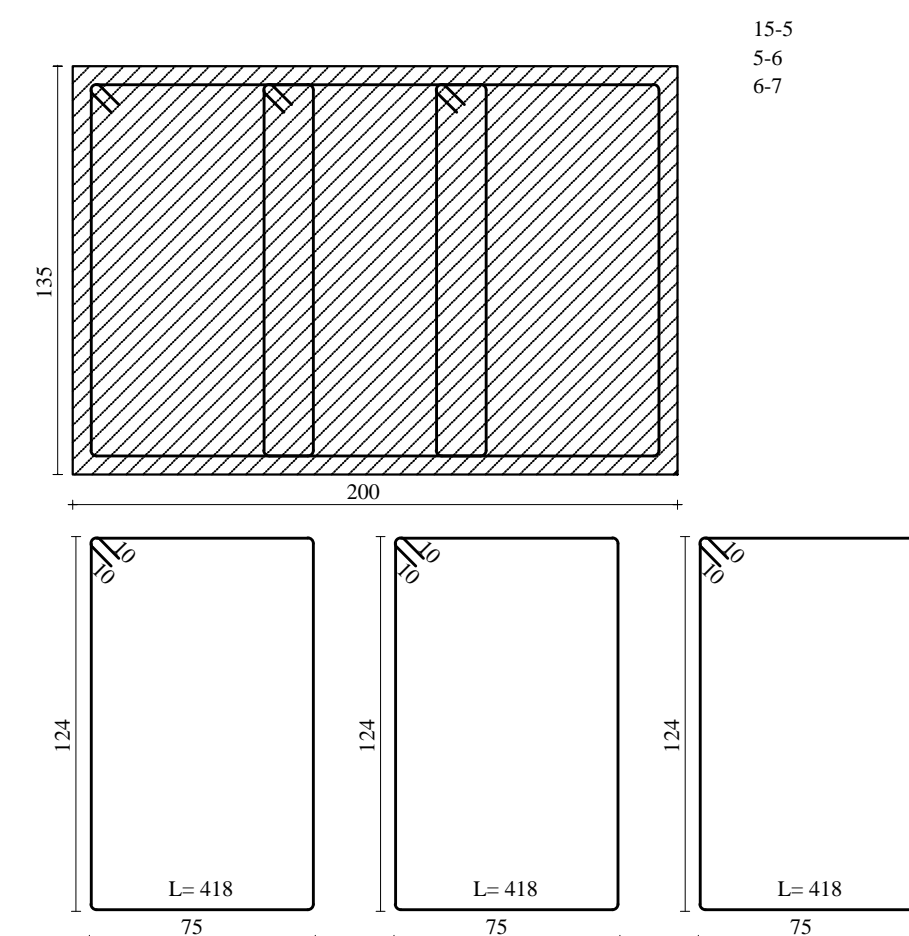
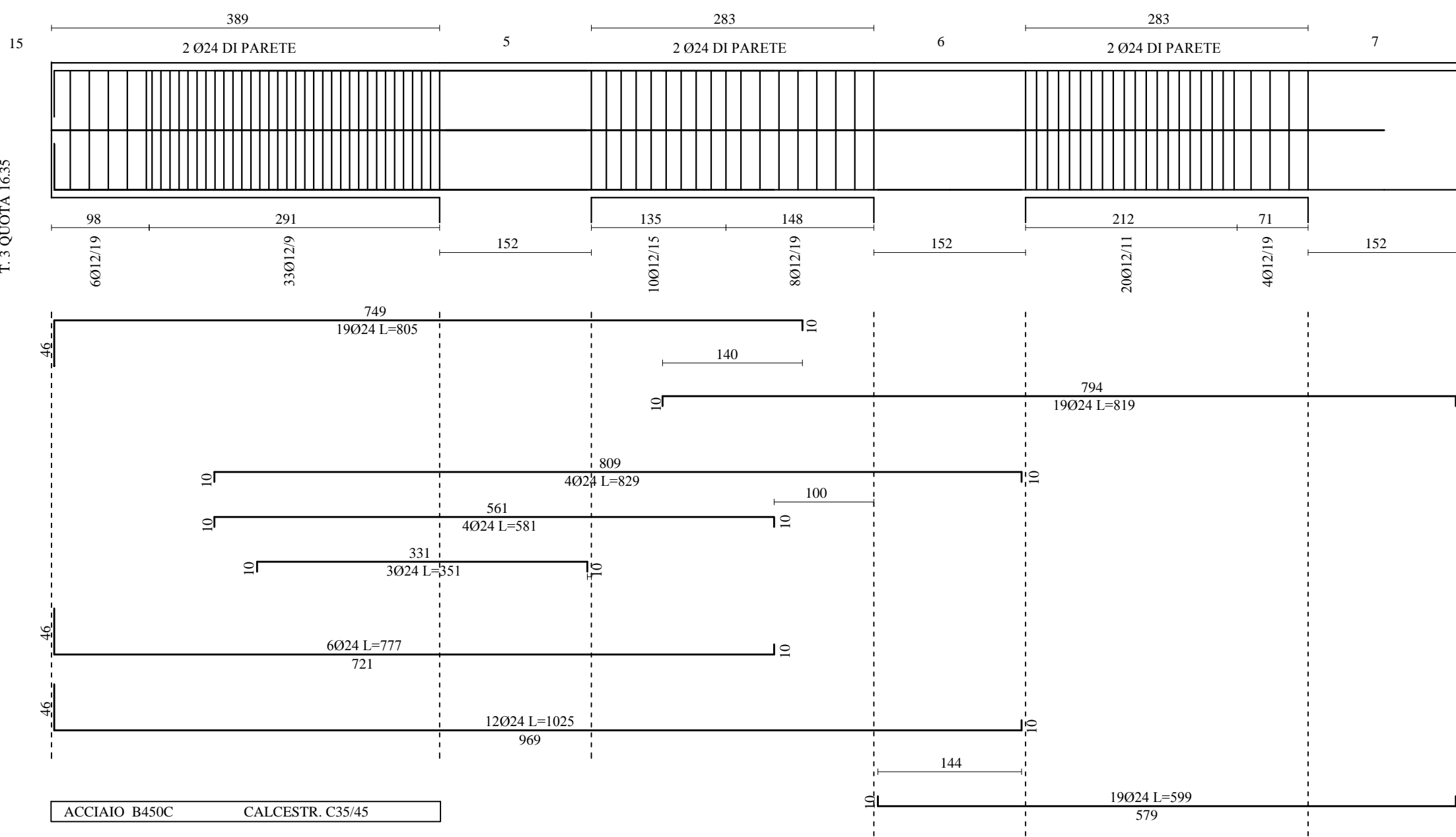
TRAVE LONGITUDINALE 14-3-4 - Raccordo Banchina esistente - Concio A
Scala 1:50



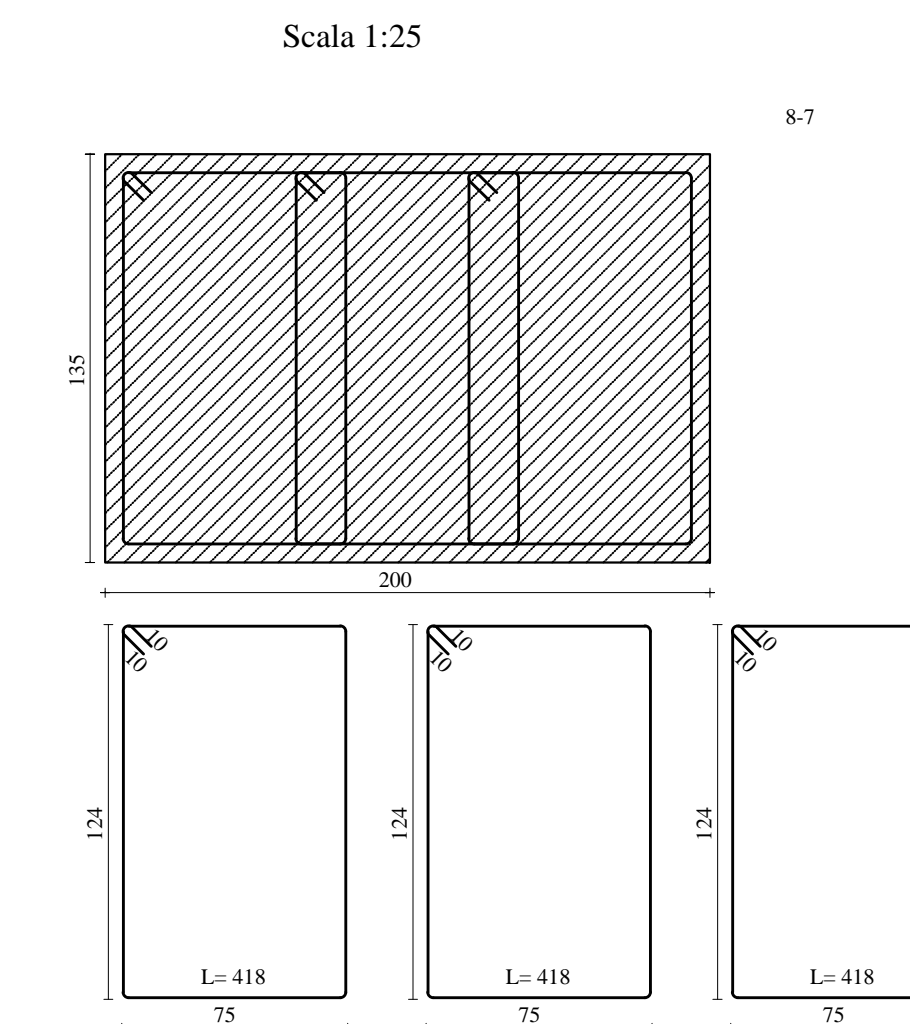
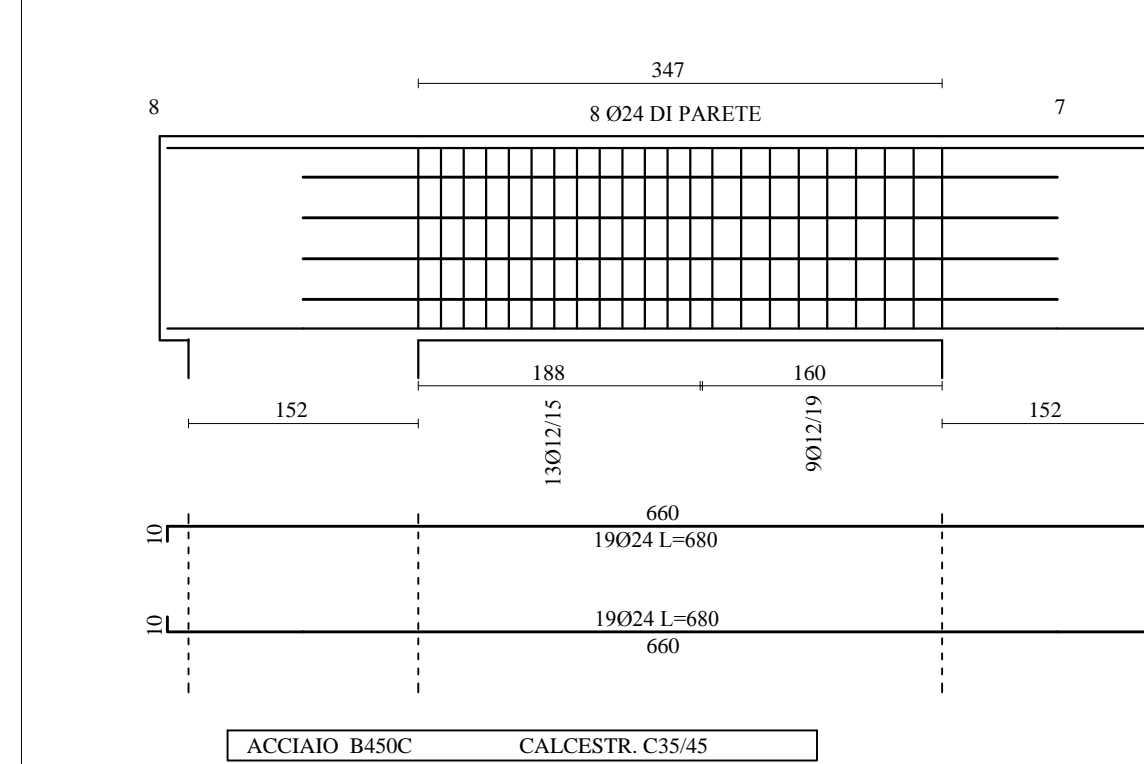
TRAVE LONGITUDINALE 4-17 Raccordo Banchina esistente - Concio A
Scala 1:50



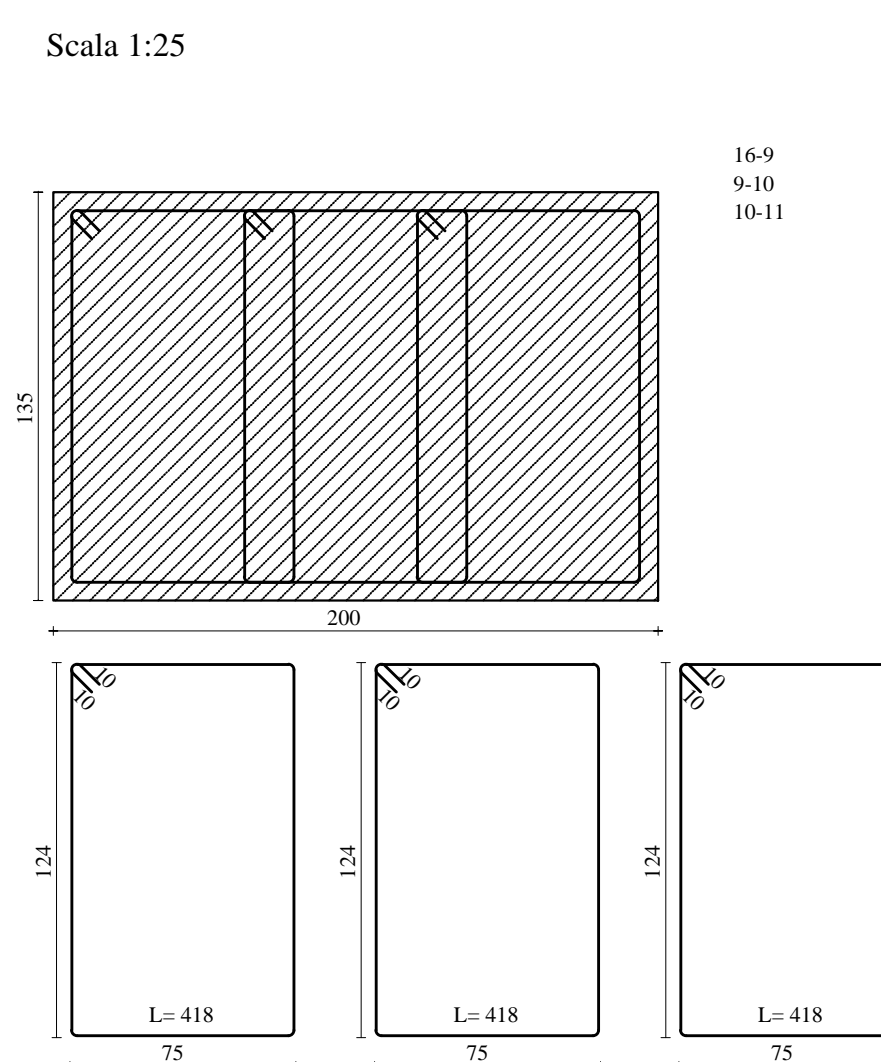
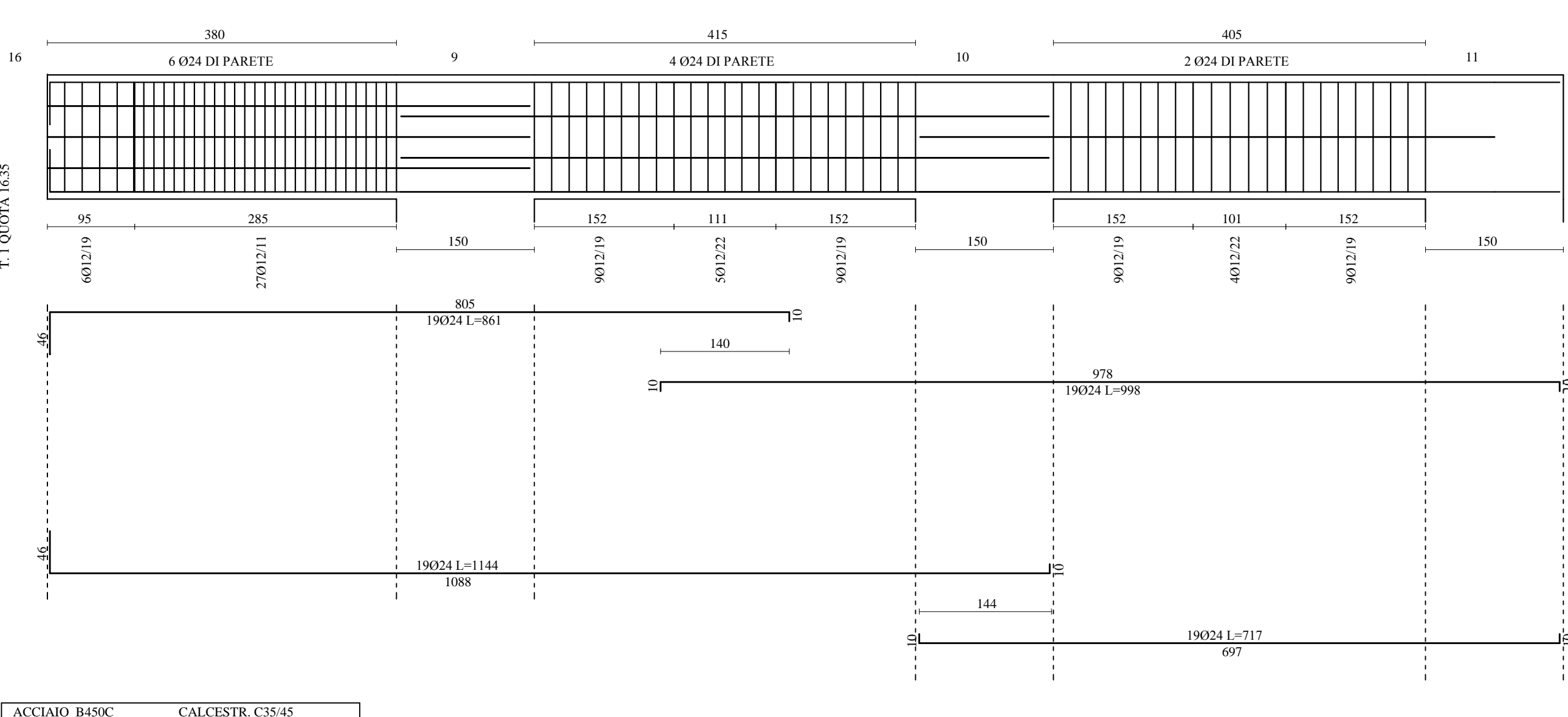
TRAVE LONGITUDINALE 15-5-6-7 Raccordo Banchina esistente - Concio A
Scala 1:50



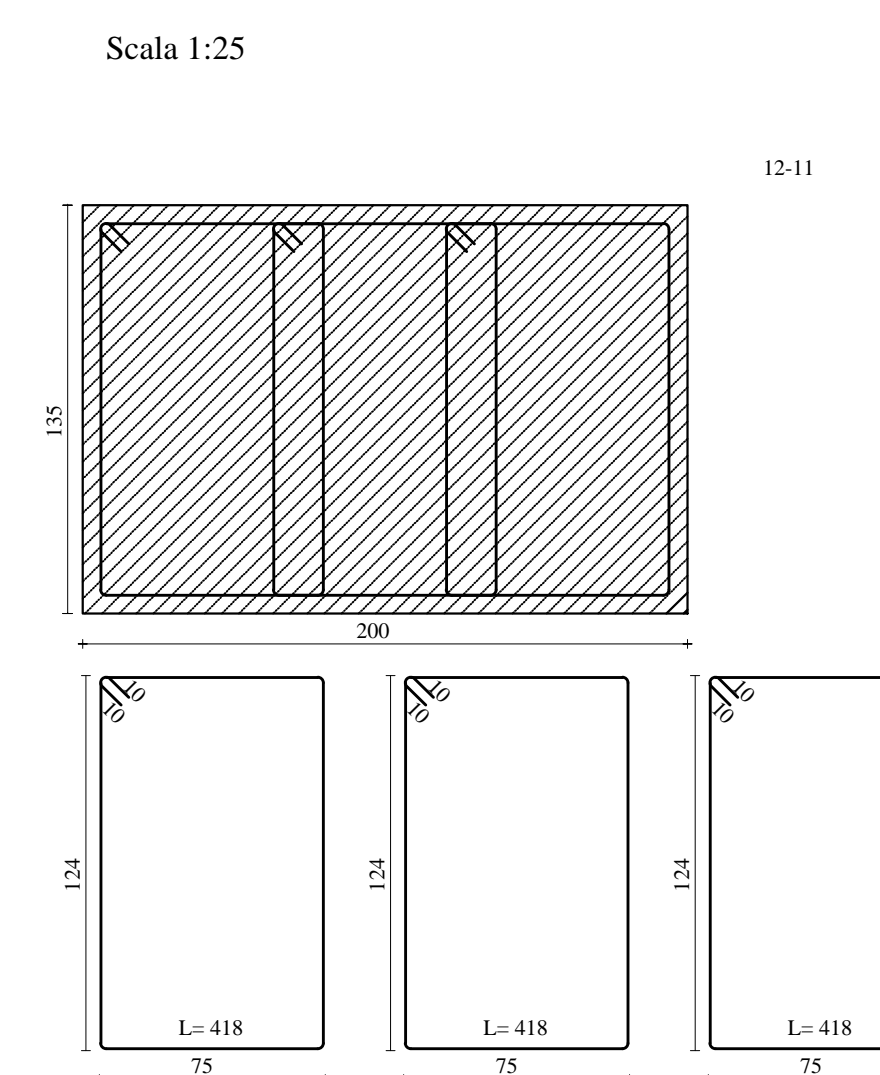
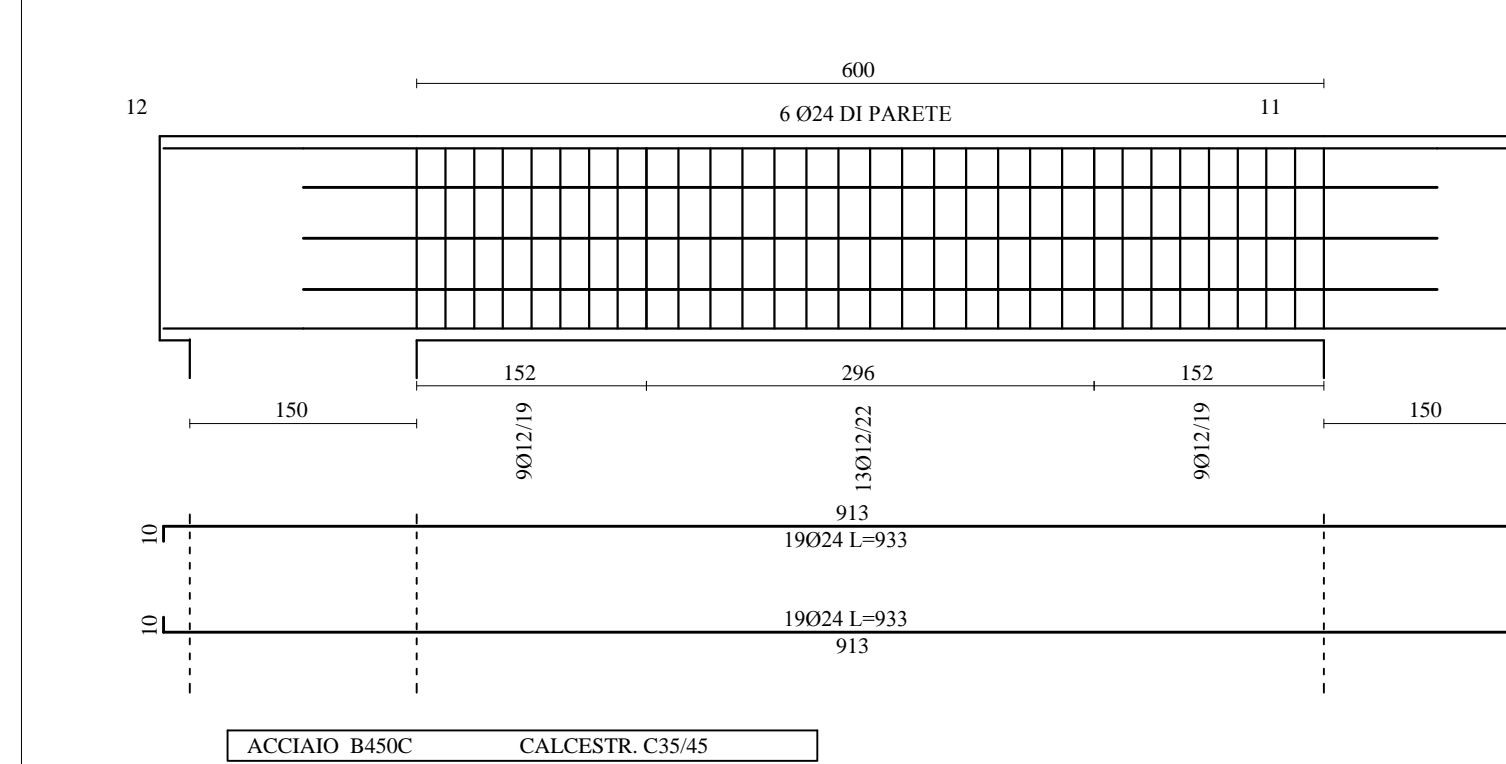
TRAVE LONGITUDINALE 8-7 Raccordo Banchina esistente - Concio A
Scala 1:50



TRAVE LONGITUDINALE 16-9-10-11 Raccordo Banchina esistente - Concio A
Scala 1:50



TRAVE LONGITUDINALE 12-11 Raccordo Banchina esistente - Concio A
Scala 1:50



PRESCRIZIONI MATERIALI

CALCESTRUZZO
 - CALCESTRUZZO A PRESTAZIONE GARANTITA (UNI EN 206-1:2006)
 - CLASSE DI ESPOSIZIONE: XS3 (UNI EN 206-1: UNI 11104)
 - CLASSE DI RESISTENZA: C35/45 (Rck≥45 MPa)
 - CLASSE DI CONSISTENZA SLUMP: S4
 - COPPIERRO: 5,5 CM

ACCIAIO D'ARMATURA
 - ACCIAIO PER CEMENTO ARMATO B450C CON LE SEGUENTI CARATTERISTICHE MINIME:
 LIMITE DI SNERVAMENTO fy nom = 450 N/mmq
 LIMITE DI ROTTURA Rt nom = 540 N/mmq
 L155(R / fy)k≤1.35 (fy misurato / fy nom) ≤ 1.25 Allungamento (Agt) ≥ 7.5 %



LAVORI DEL PRIMO STRALCIO E DEL SECONDO STRALCIO DELLA TERZA FASE DEL PORTO COMMERCIALE DI AUGUSTA - BANCHINE CONTAINERS -

IMPRESSE:

(MANDATARIA)	(MANDANT)	

PROGETTO ESECUTIVO DI FUSIONE ED INTEGRAZIONE DEL I E II STRALCIO

3							
2							
1	3	7	3	PRIMA REVISIONE	V. LONGO	D. BORGOGGIORGIO	F. GIORDANO
0	0	0	0	PRIMA EMISSIONE	V. LONGO	D. BORGOGGIORGIO	F. GIORDANO
REV.	DATA	OPERA	TIPO ELAB.	N° ELAB.	REV.	VER.	APPR.
	10/7/3	IM01	S	0111	B		
PROGETTO				OPERAZIONE	SCALA:	varie	

TITOLO ELABORATO:
**OPERE A MARE
 BANCHINE**
 Tratto di raccordo banchina esistente - Concio A - Armature travi - Tav. 1 di 2

PROGETTAZIONE:

(MANDATARIA)	(MANDANTE)

RESPONSABILE DEL PROCEDIMENTO: