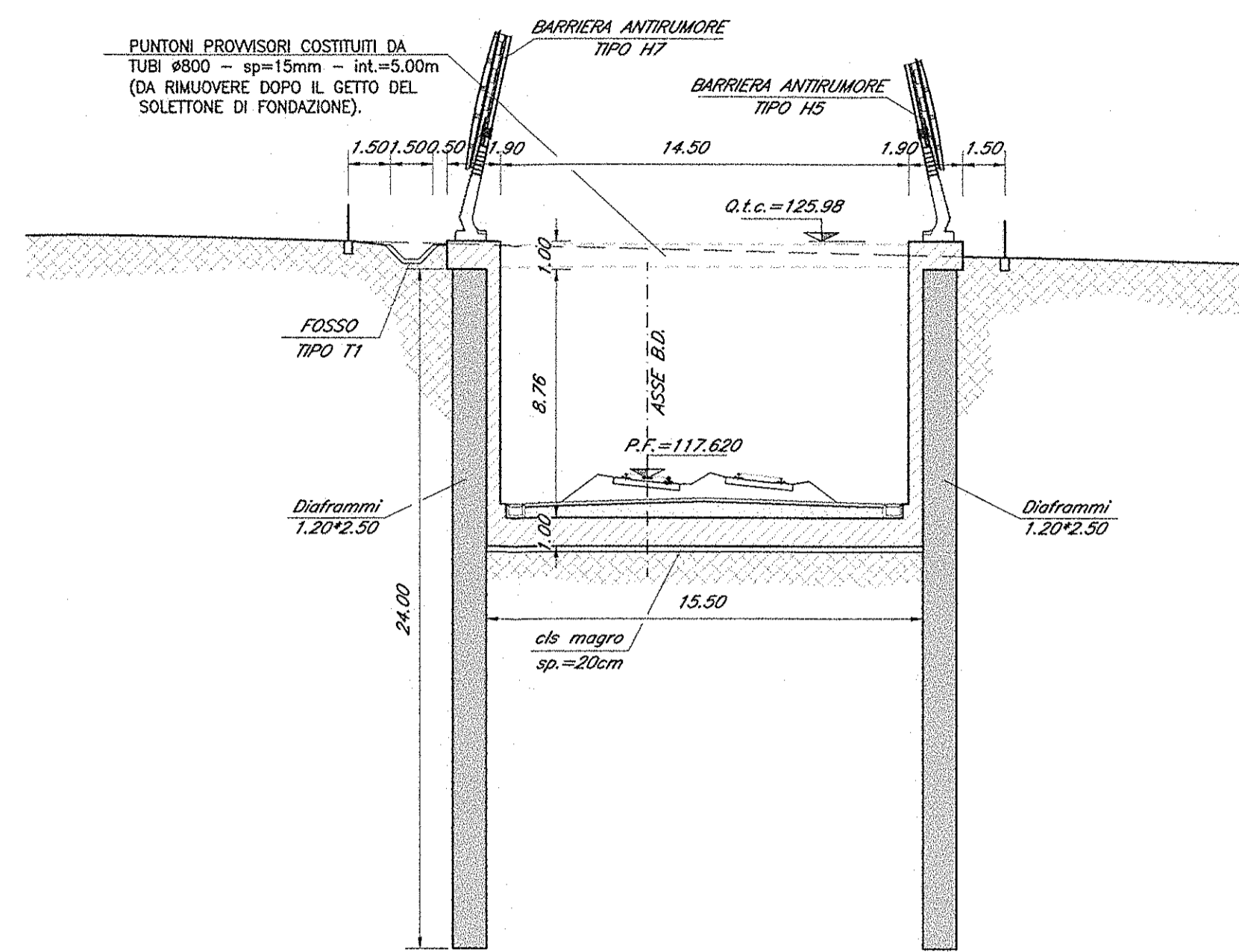
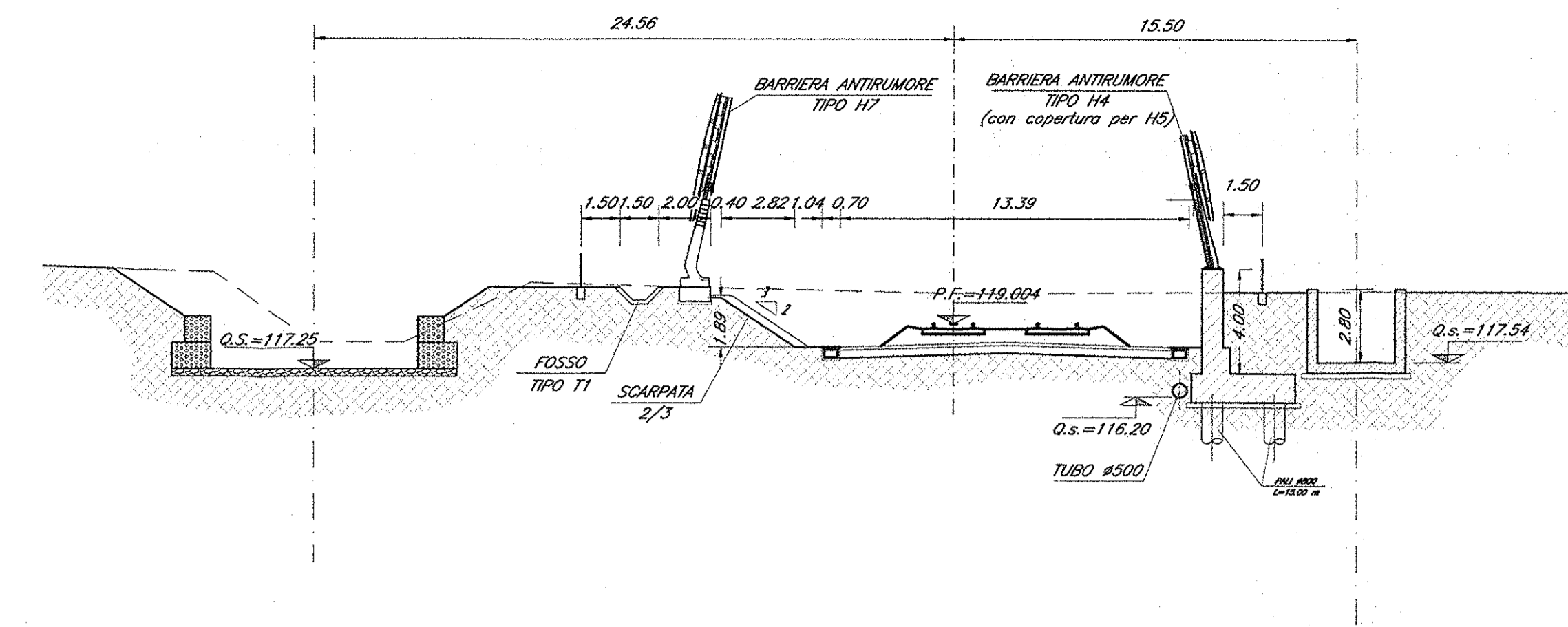
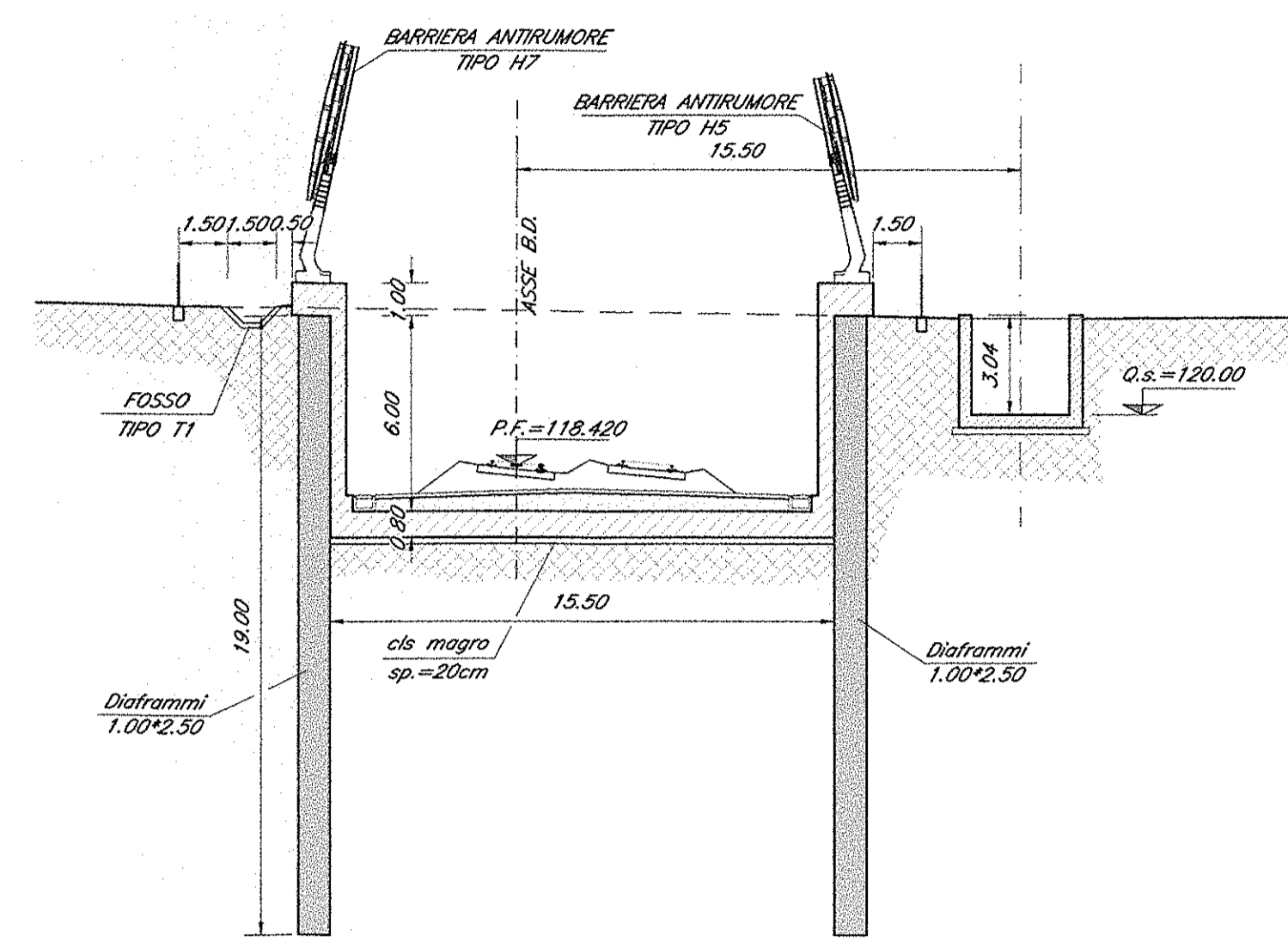


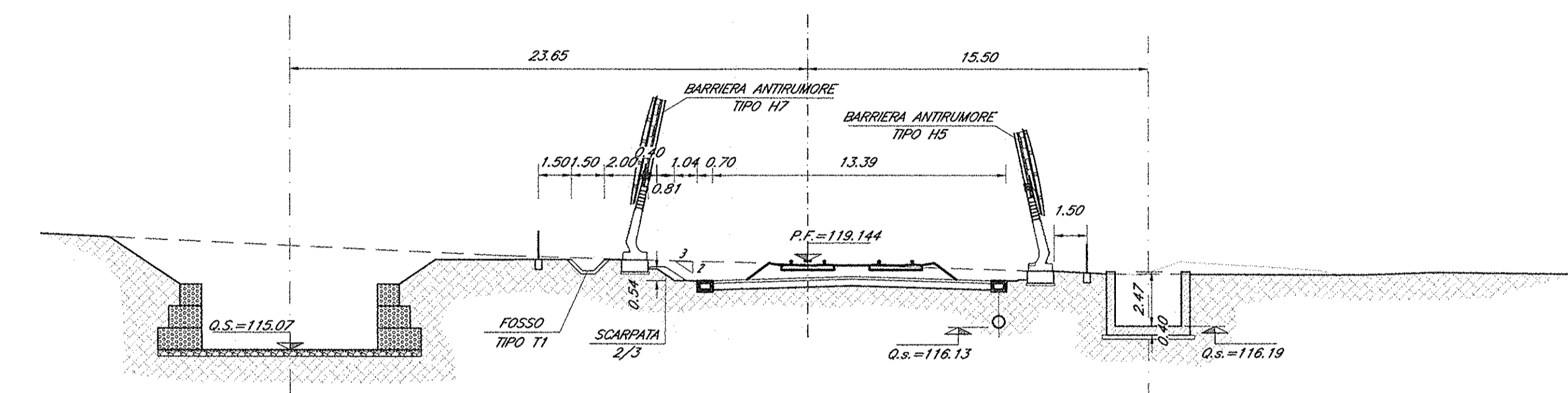
SEZIONE 4: Prog. 7+000.07
Scala 1:200



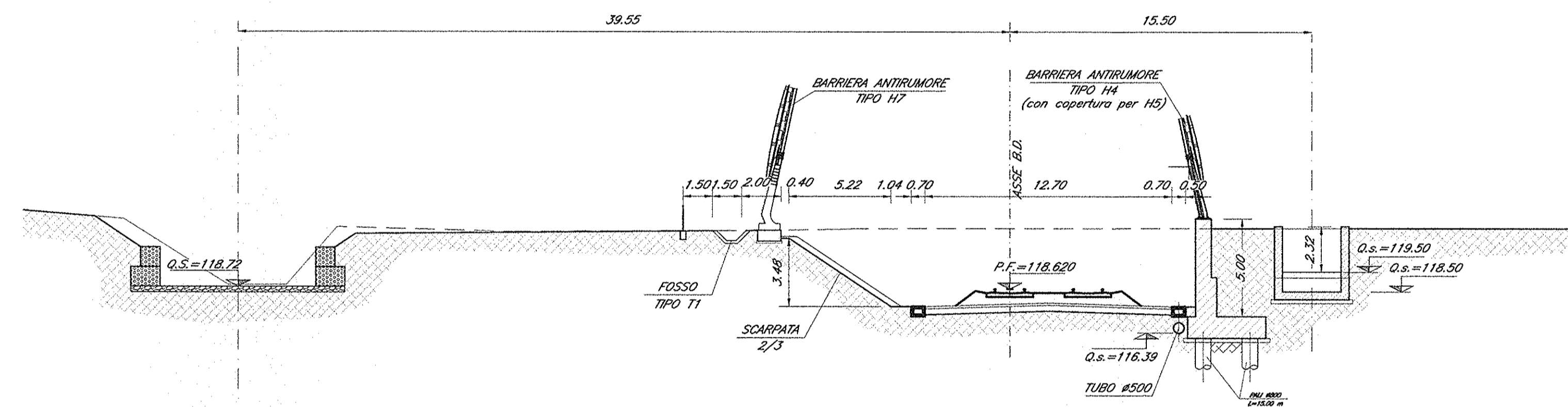
SEZIONE 7: Prog. 7+150.00
Scala 1:200



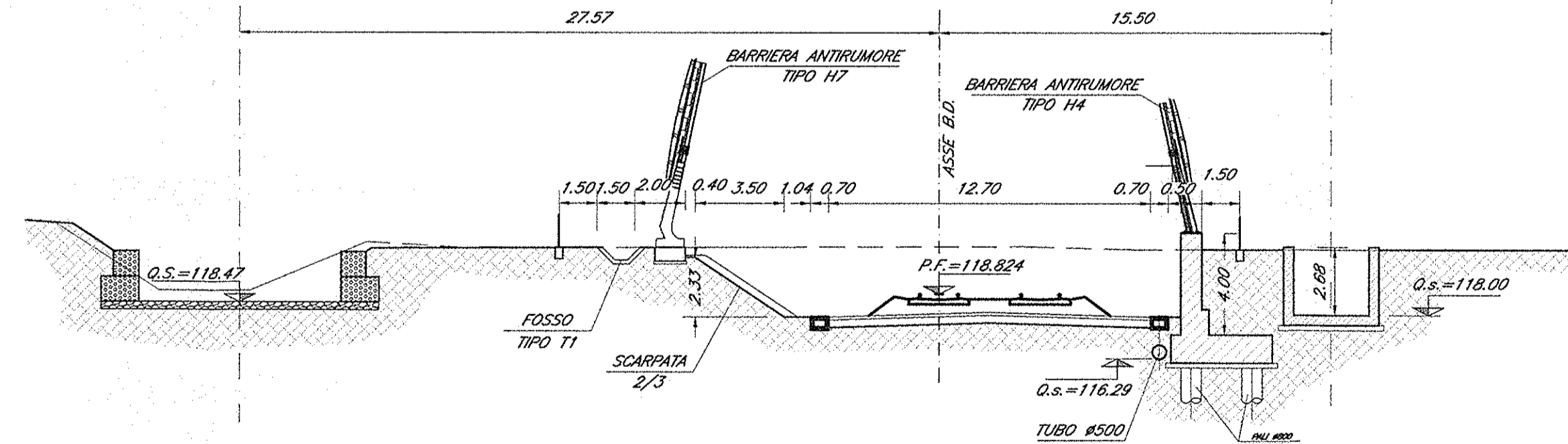
SEZIONE 12: Prog. 7+331.06
Scala 1:200



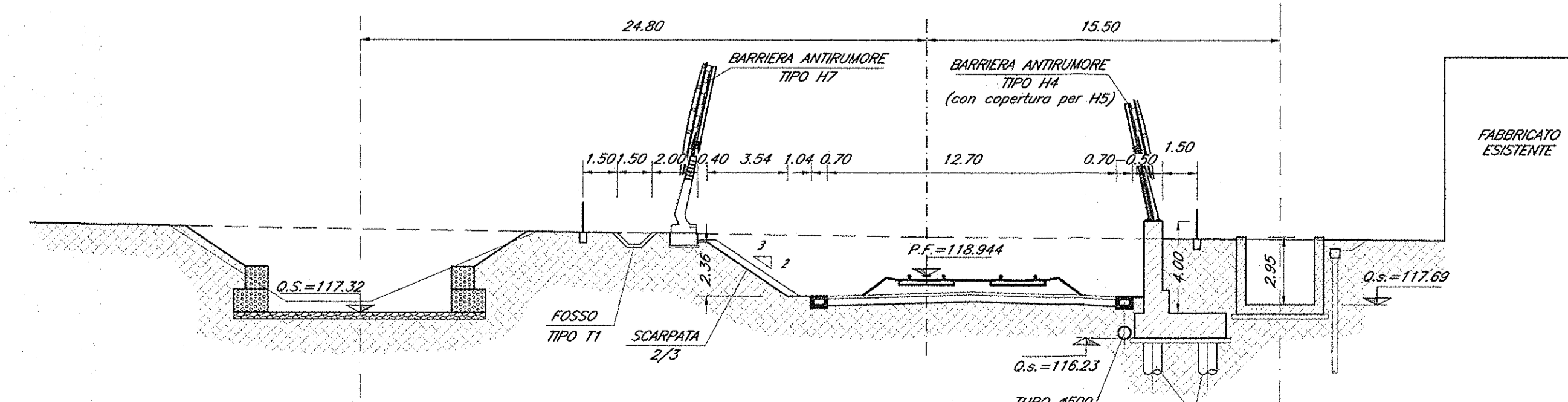
SEZIONE 8: Prog. 7+200.00
Scala 1:200



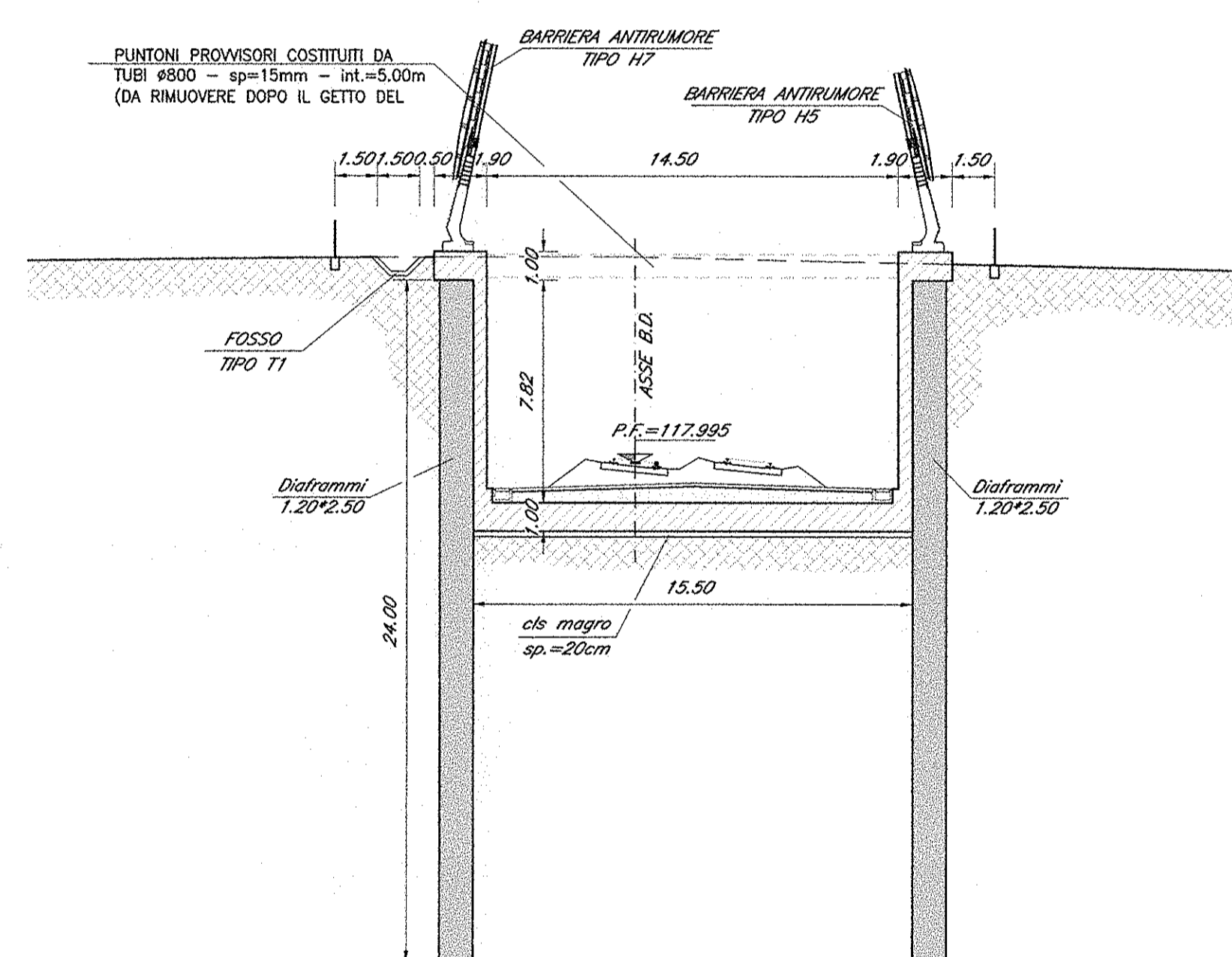
SEZIONE 9: Prog. 7+250.00
Scala 1:200



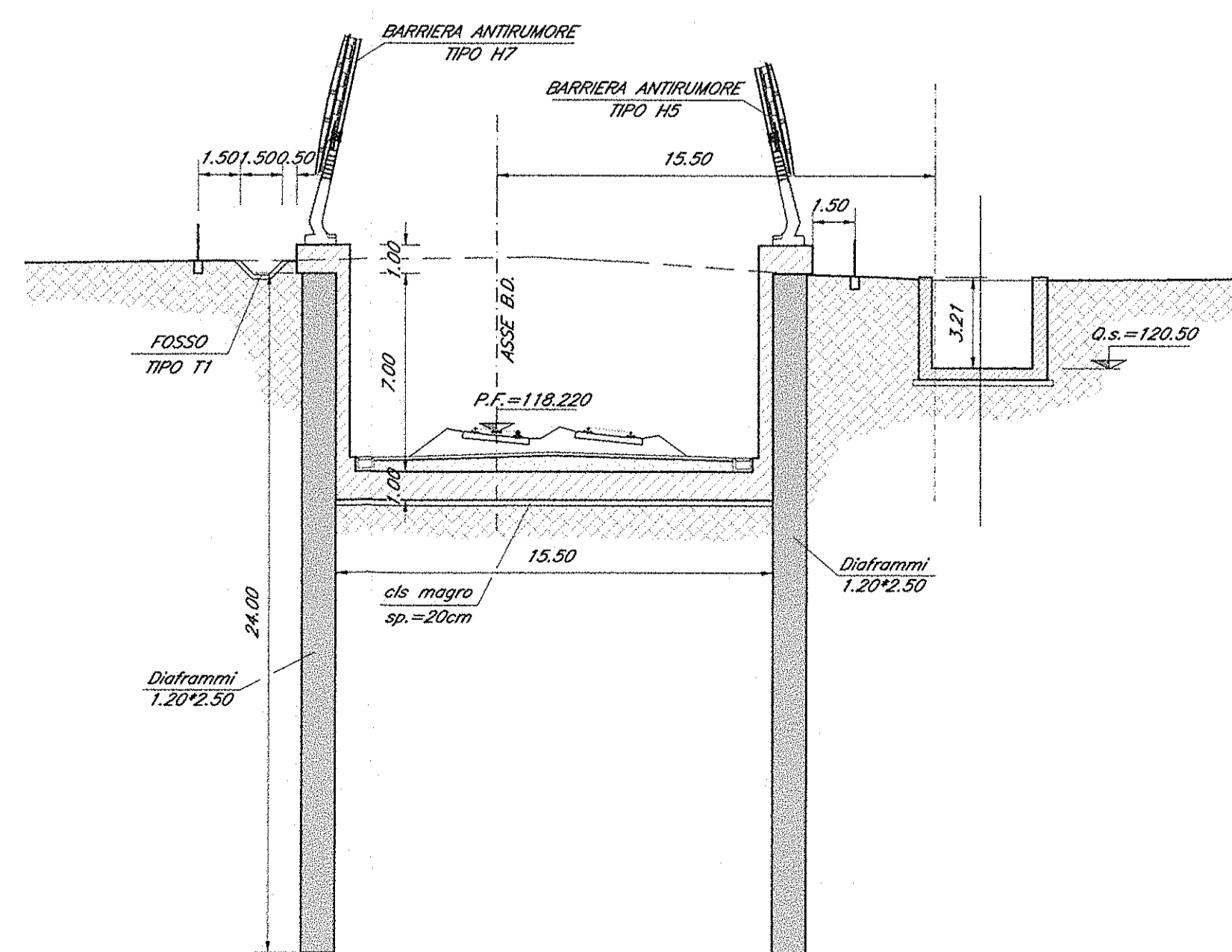
SEZIONE 10: Prog. 7+281.00
Scala 1:200



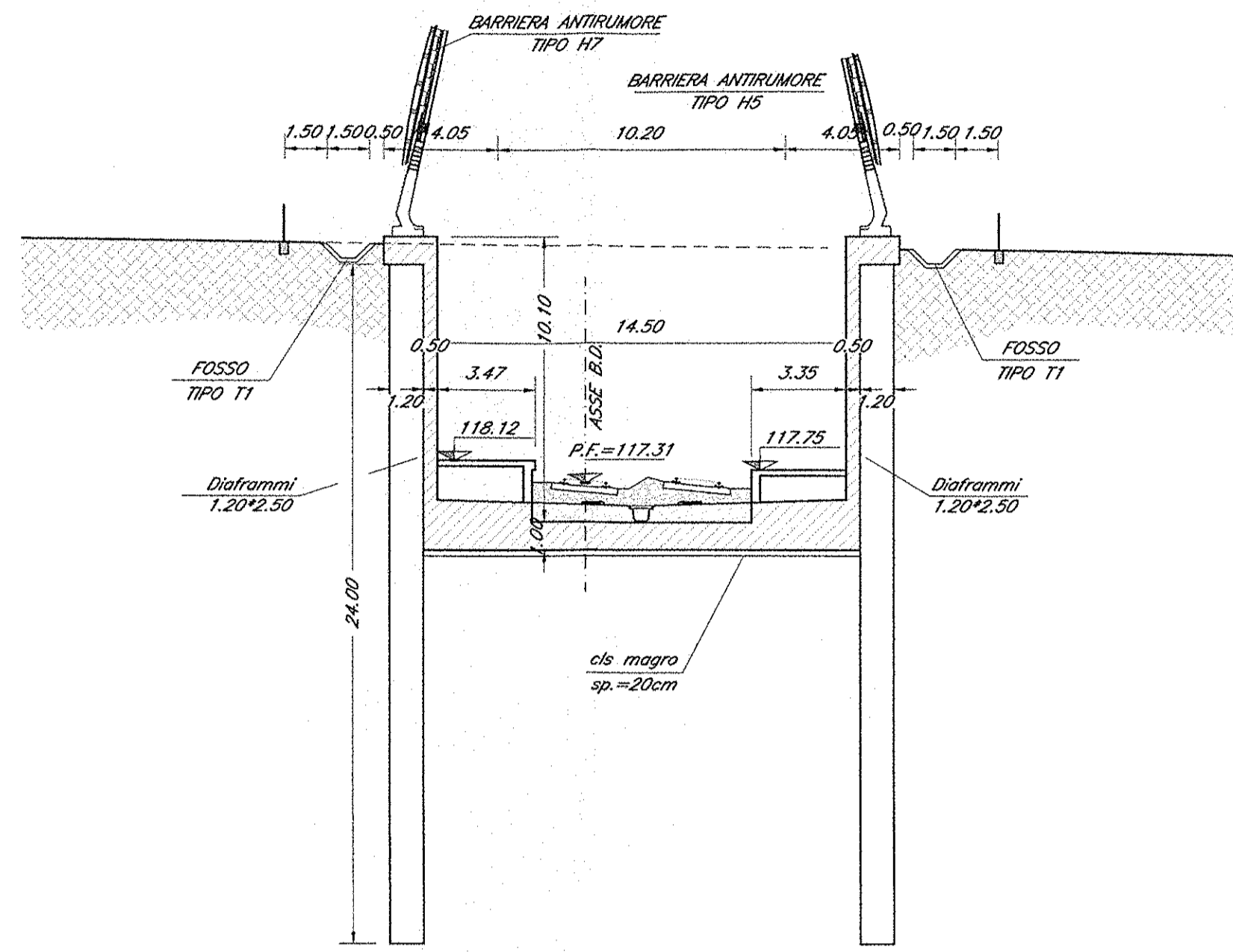
SEZIONE 5: Prog. 7+050.00
Scala 1:200



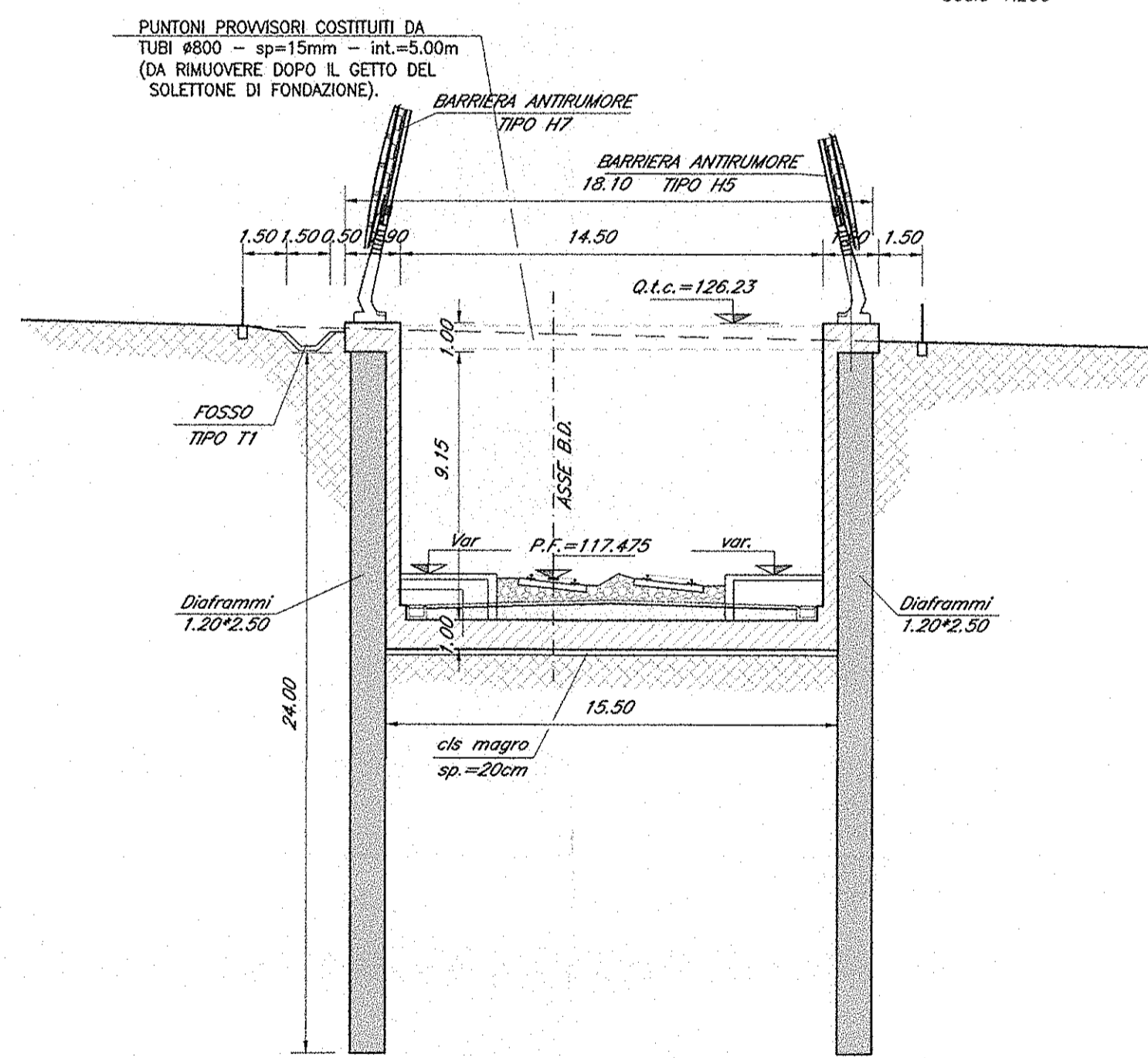
SEZIONE 6: Prog. 7+100.00
Scala 1:200



SEZIONE 2: Prog. 6+971.00
Scala 1:200



SEZIONE 3: Prog. 6+983.00
Scala 1:200



COMMITTENTE:



PROGETTAZIONE:



DIREZIONE TECNICA
UO CORPO STRADALE E GEOTECNICA

PROGETTO DEFINITIVO

ITINERARIO NAPOLI - BARI
RADDOPPIO TRATTA CANCELLO - BENEVENTO
I LOTTO FUNZIONALE CANCELLO - FRASSO TELESINO E VARIANTE
ALLA LINEA ROMA NAPOLI VIA CASSINO NEL COMUNE DI MADDALONI
TR03 - Trincea ferroviaria dal km 6+970,00 al km 7+376,069
Sezioni trasversali

SCALA:
1:200

COMMESSA LOTTO FASE ENTE TIPO DOC. OPERADISCIPLINA PROG. REV.

I/F0F 01 D 11 W9 TR0300 004 A

Revis.	Descrizione	Redatto	Data	Verificato	Data	Approvato	Data	Autorizzato	Data
A	Emissione Esecutiva	A.Tosani	06.07.2015	P. Vigorelli	07.07.2015	F. Comincioli	08.07.2015	F. Comincioli	08.07.2015