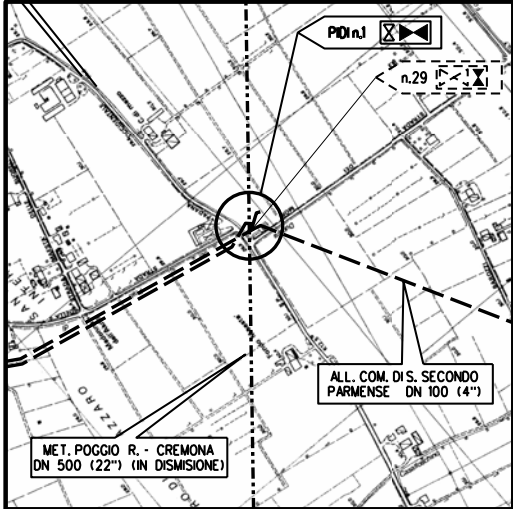
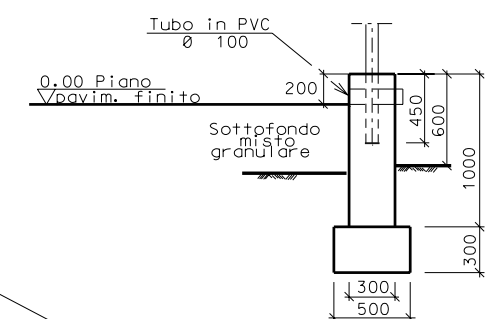
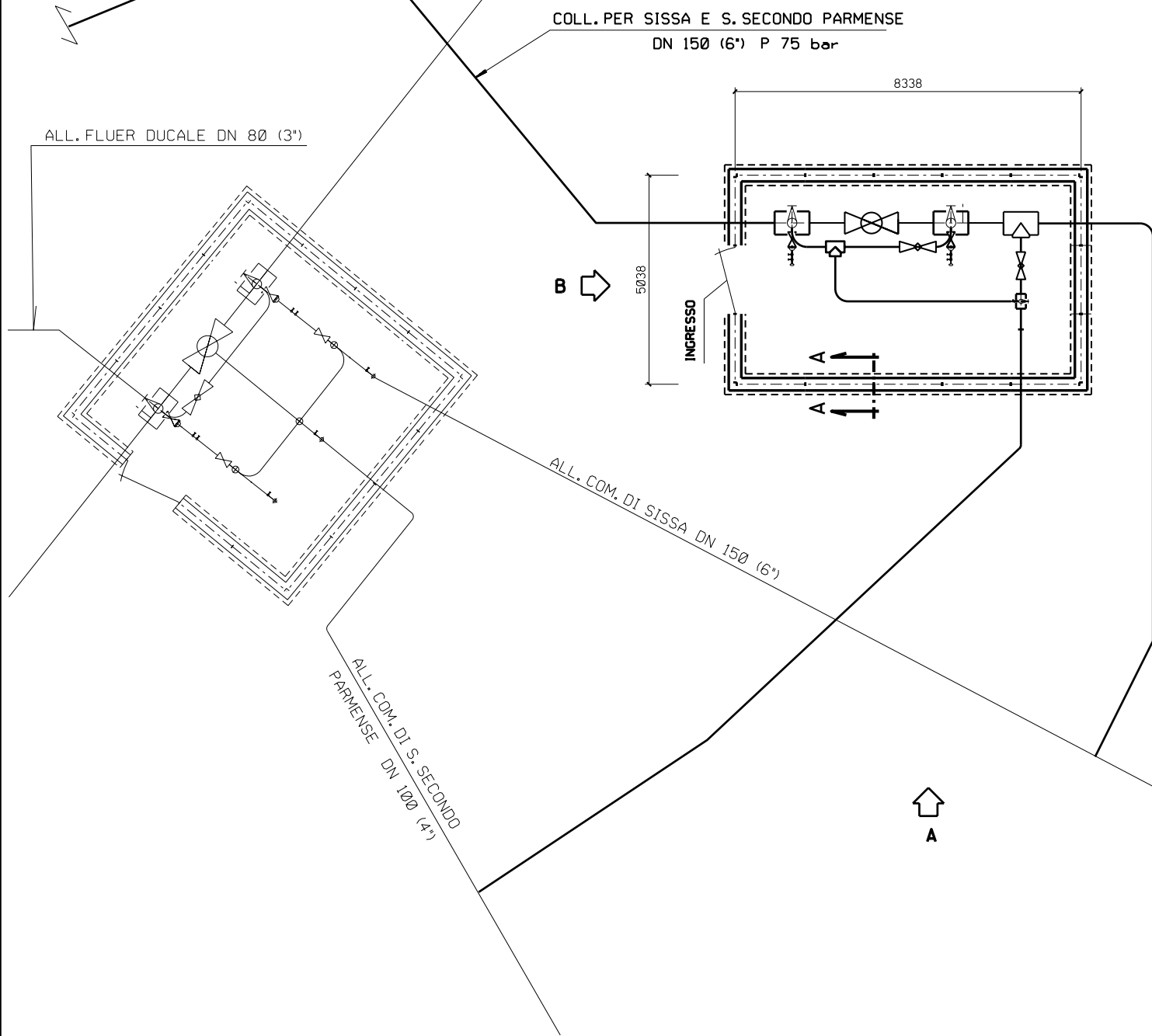


DOCUMENTI DI RIFERIMENTO	N.



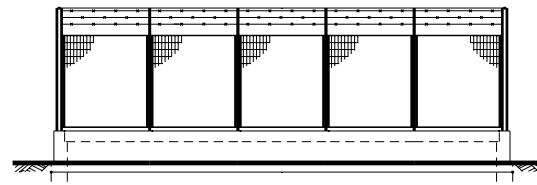
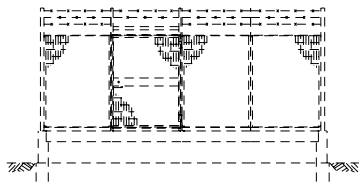
SISSA (PR)-TAV. CTR 181043
COROGRAFIA 1:10000

0	06/06/2008	EMISSIONE	SCIOSCIA	CASATI	SCIOSCI
Rev.	DATA	DESCRIZIONE	ELABORATO	VERIFICATO	APPROVATO
		PROGETTISTA Snamprogetti	COMMESSA 663300	UNITA' N. 10	
Met. POGGIO RENATICO-CREMONA DN 1200(48") P 75 bar COLLEGAMENTO PER SISSA E S. SECONDO PARMENSE DN 150 (6") P 75 bar			DIS. N. LC-D-83395		
			REVISIONE 0		
PUNTO DI INTERCETTAZIONE DI DERIVAZIONE IMPORTANTE (PIDI) n.1 Loc. CIMITERO			FG. 1	di 3	
			SCALA		

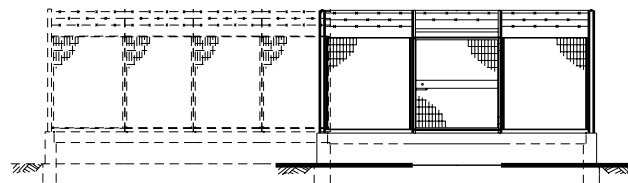


SEZIONE A - A

SCALA 1 : 100



PROSPETTO A



PROSPETTO B