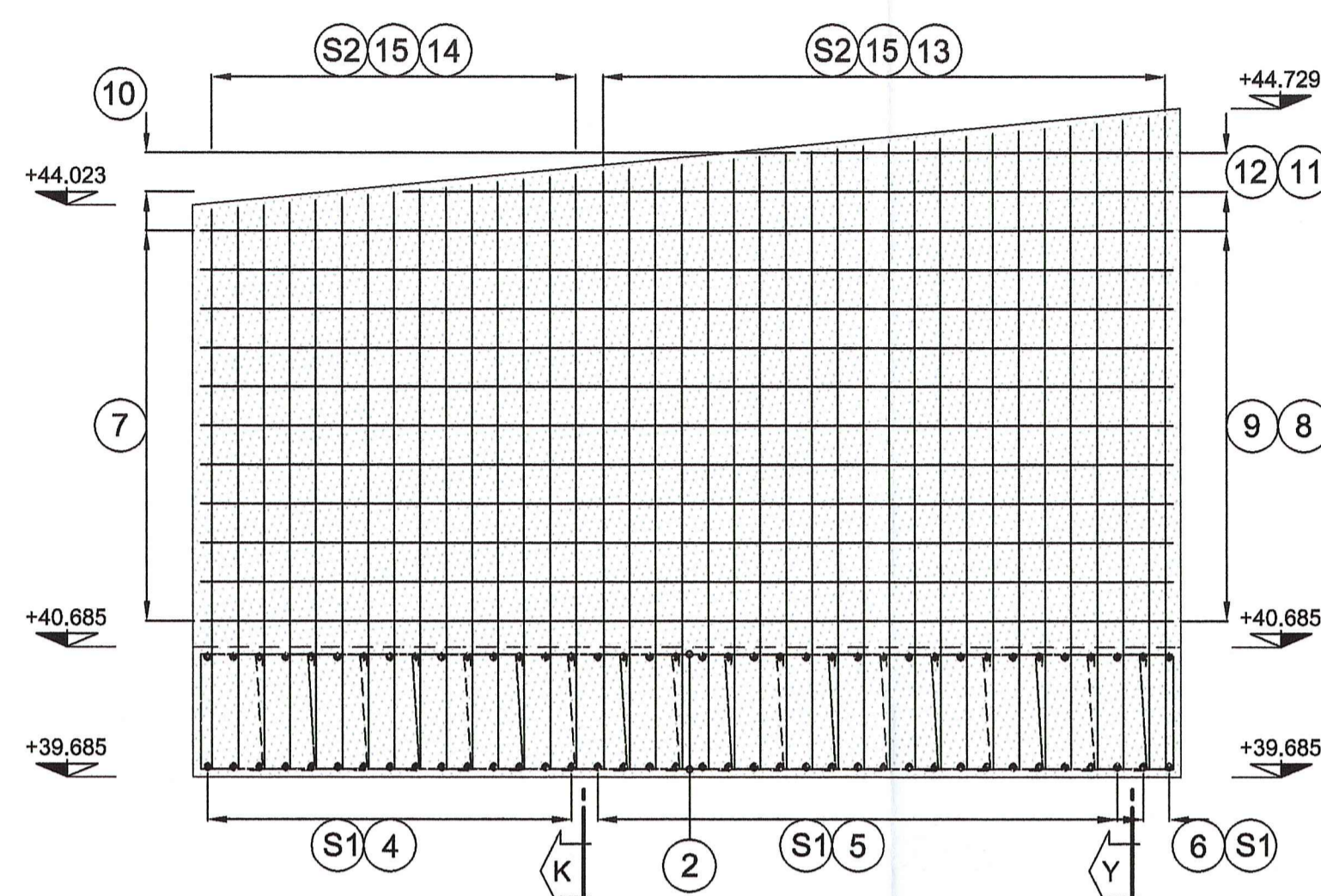


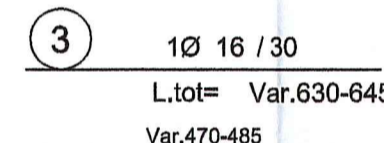
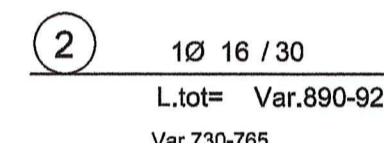
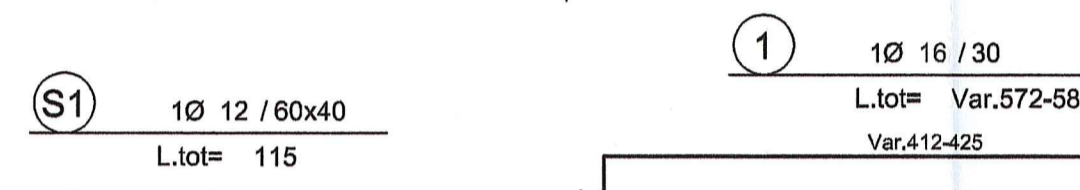
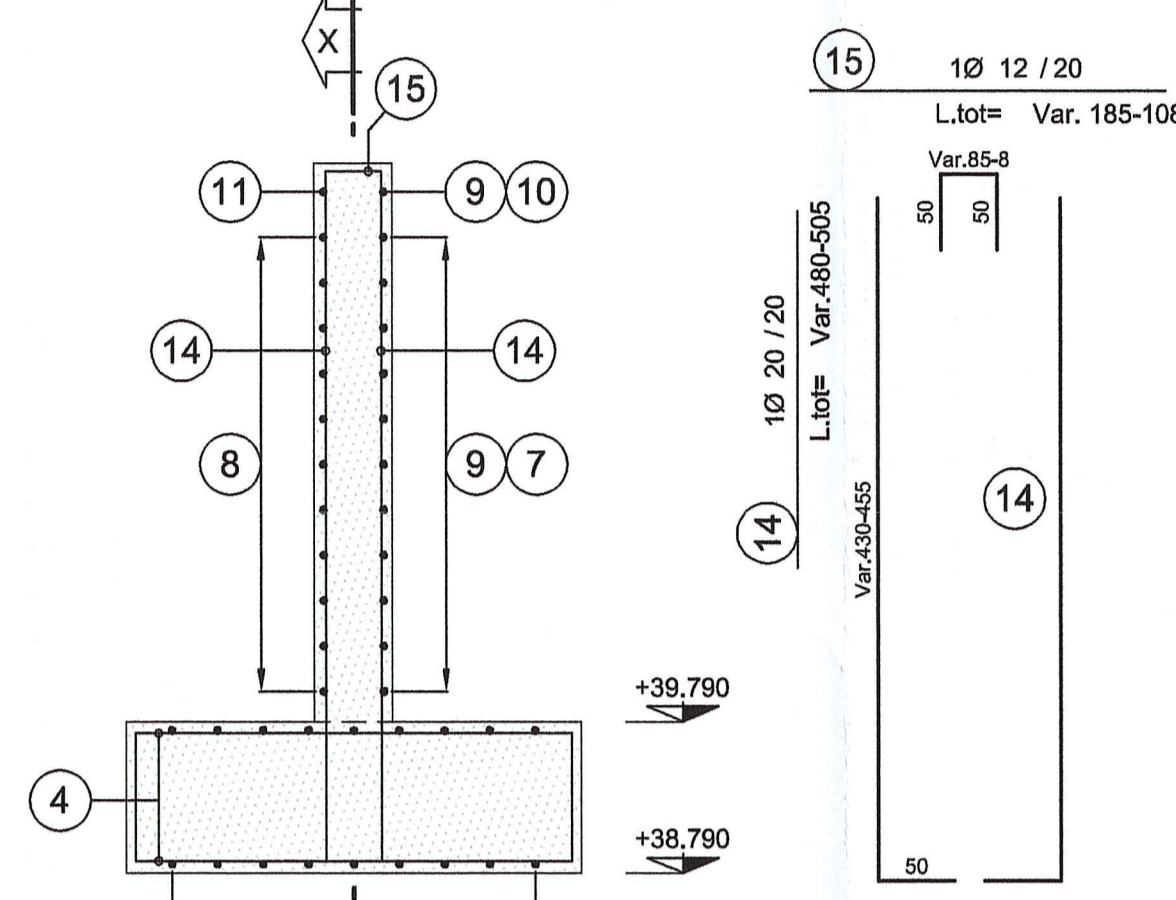
MURO DI PROTEZIONE SPARTITRAFFICO

SCALA 1:50

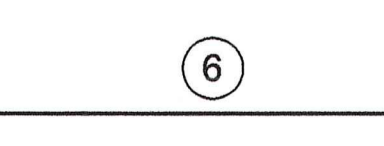
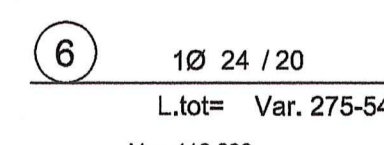
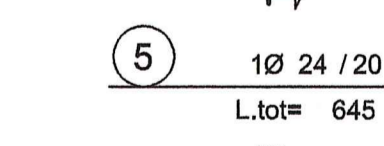
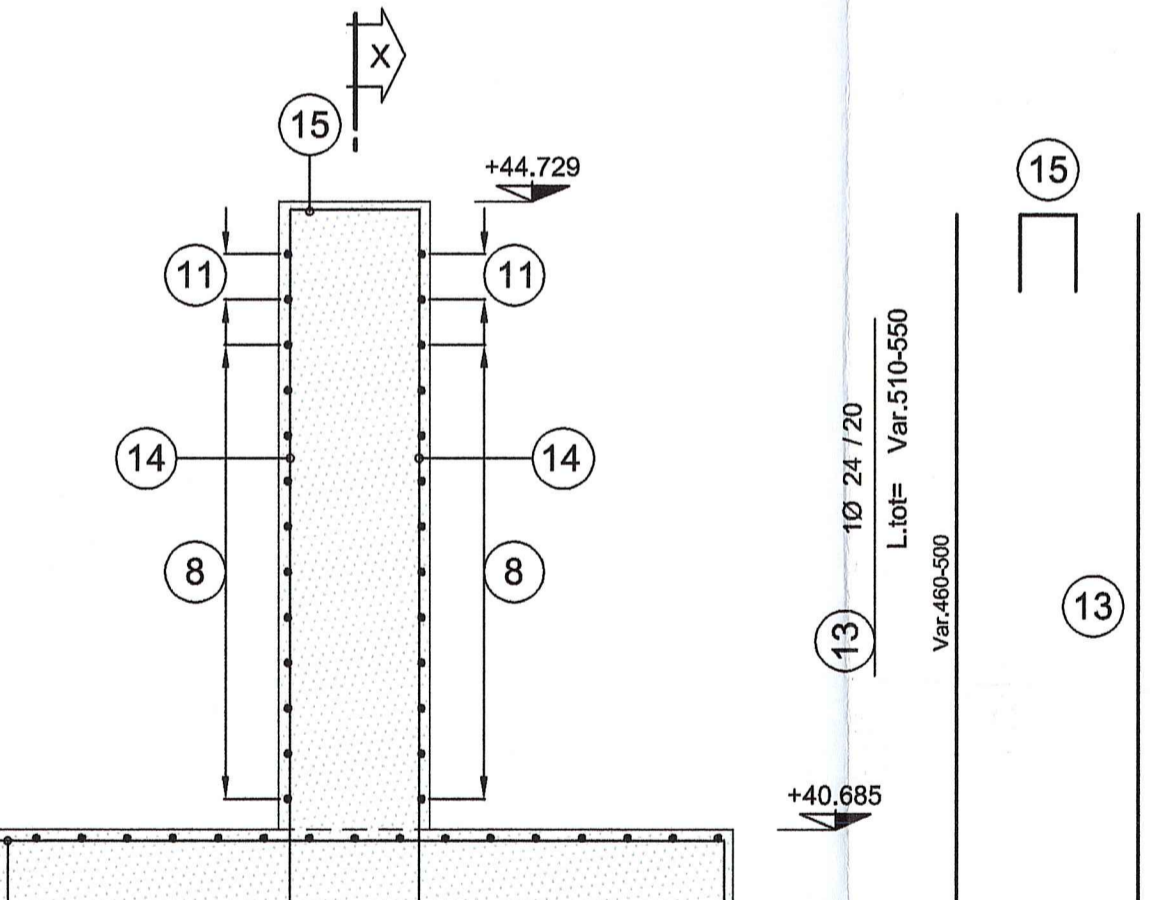
SEZIONE X-X



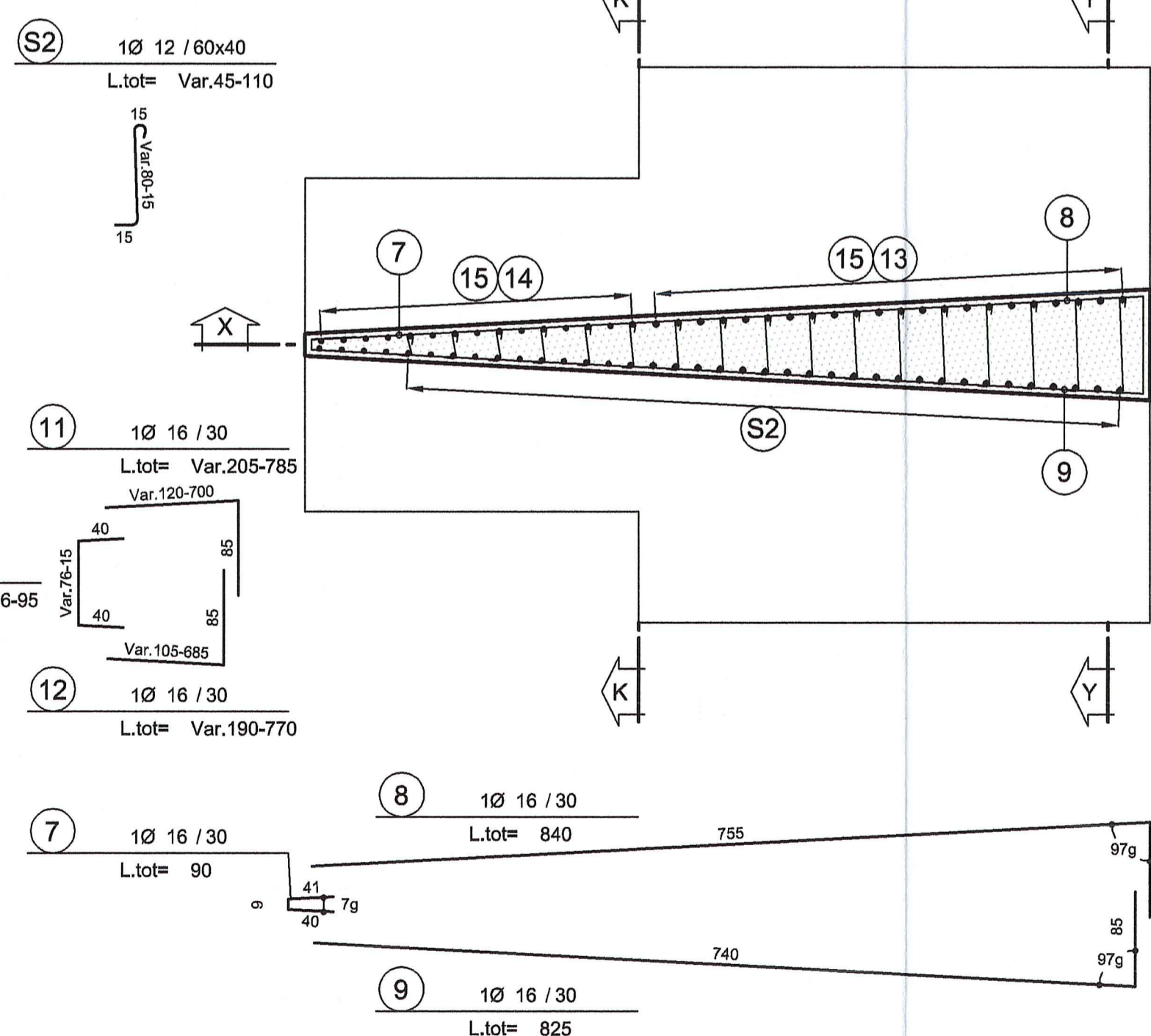
SEZIONE K-K



SEZIONE Y-Y



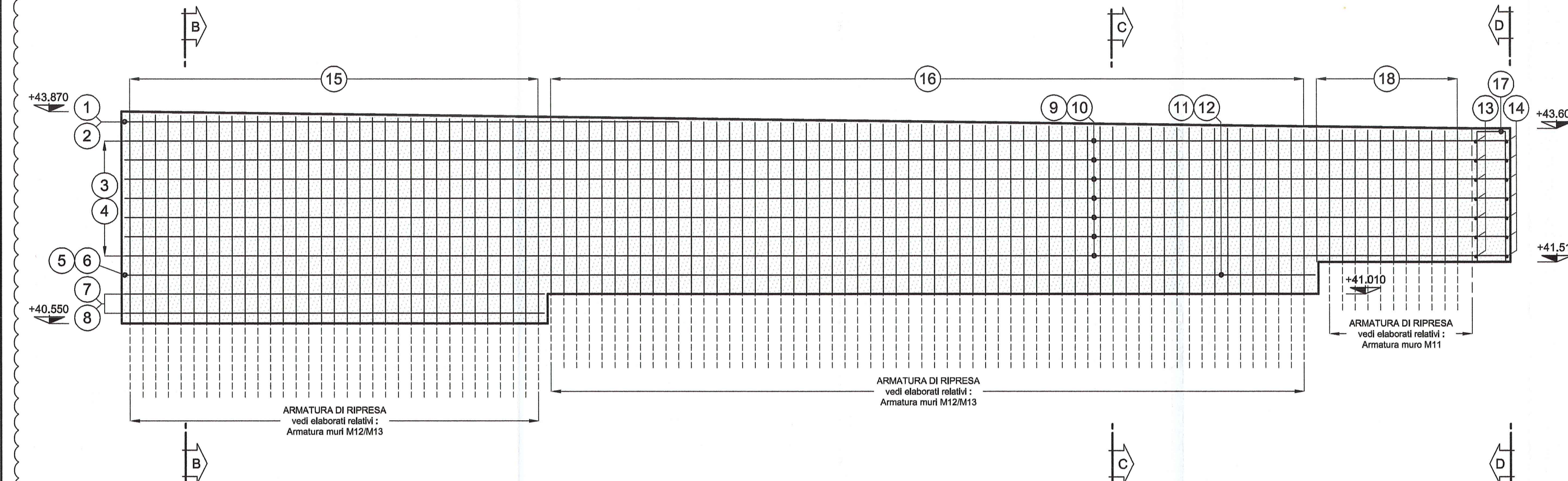
PIANTA



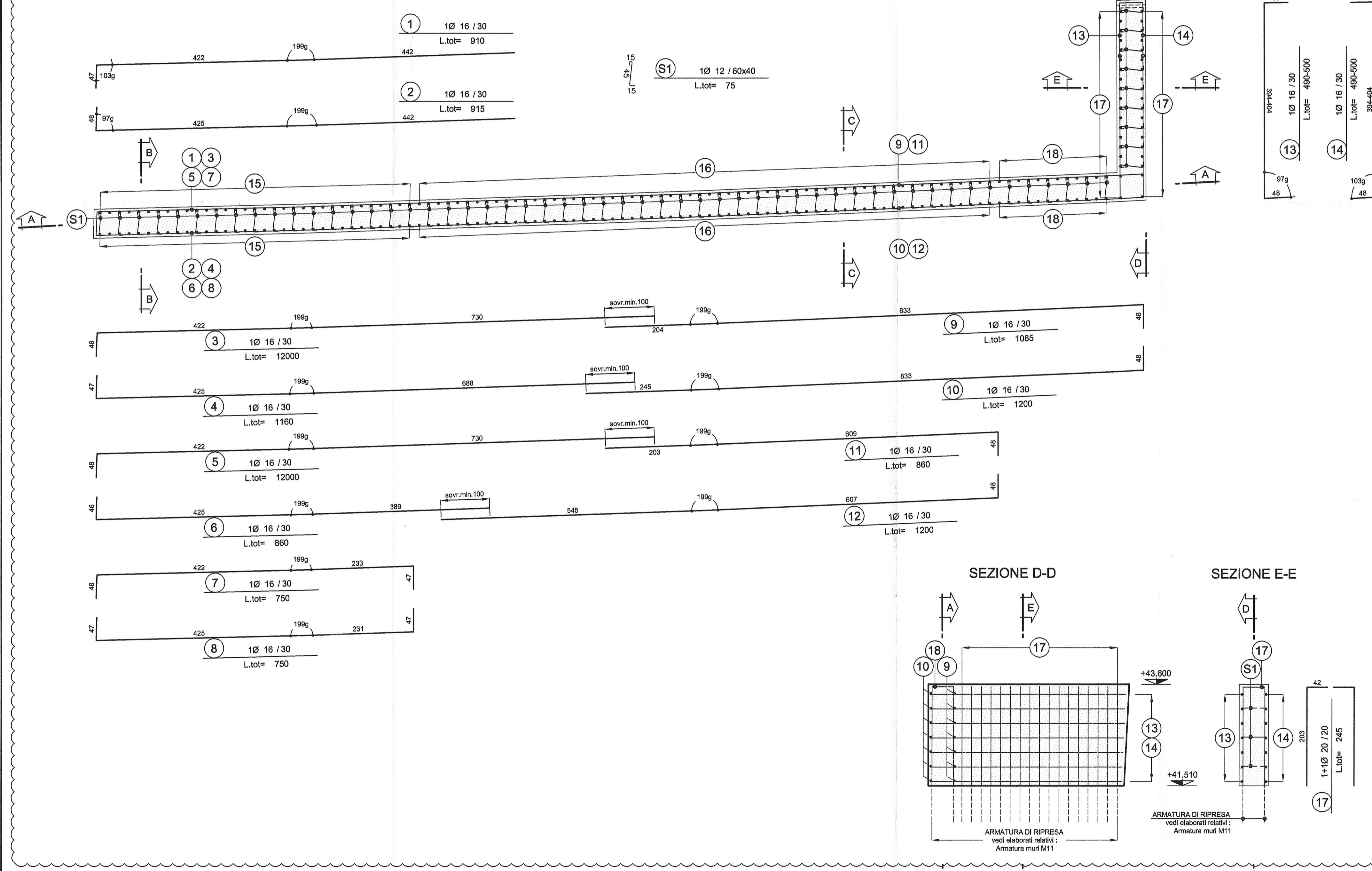
MURO DI PROTEZIONE BORDO LATERALE

SCALA 1:50

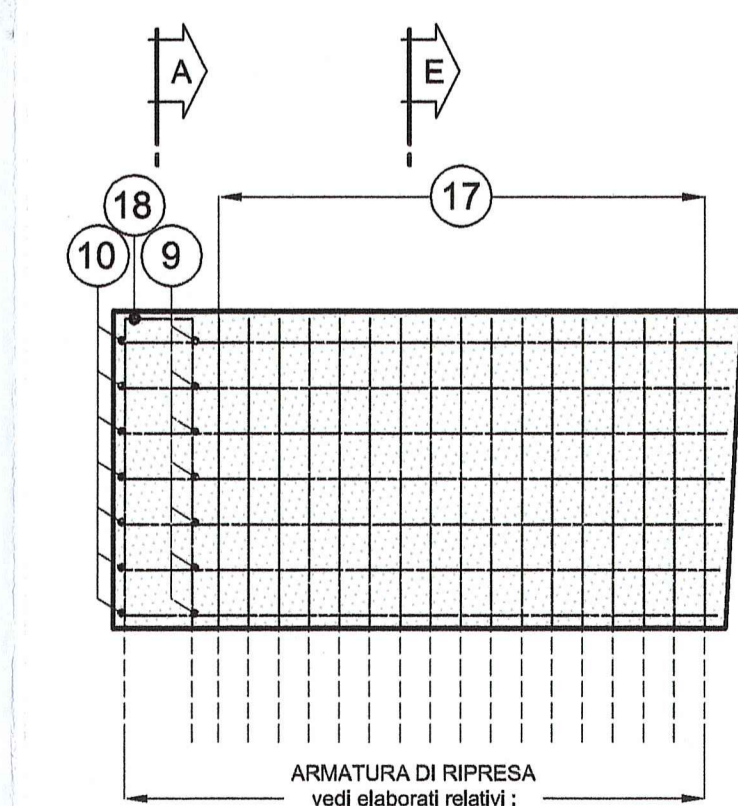
SEZIONE A-A



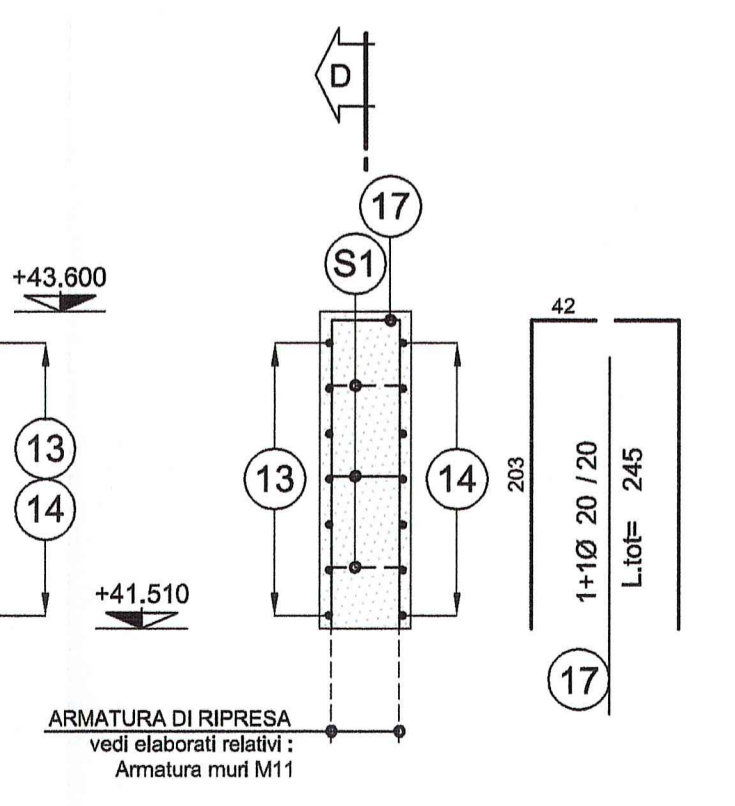
PIANTA



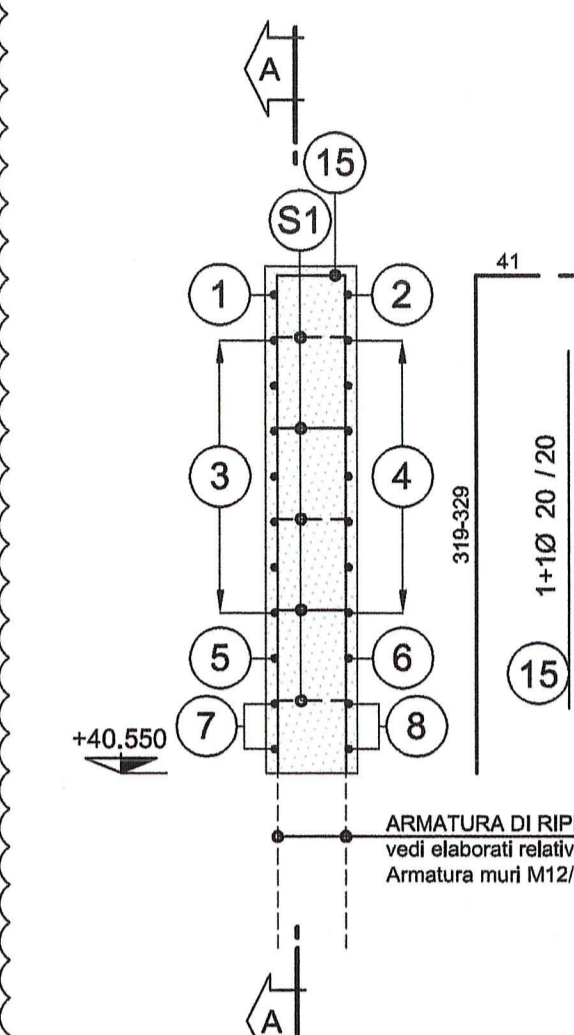
SEZIONE D-D



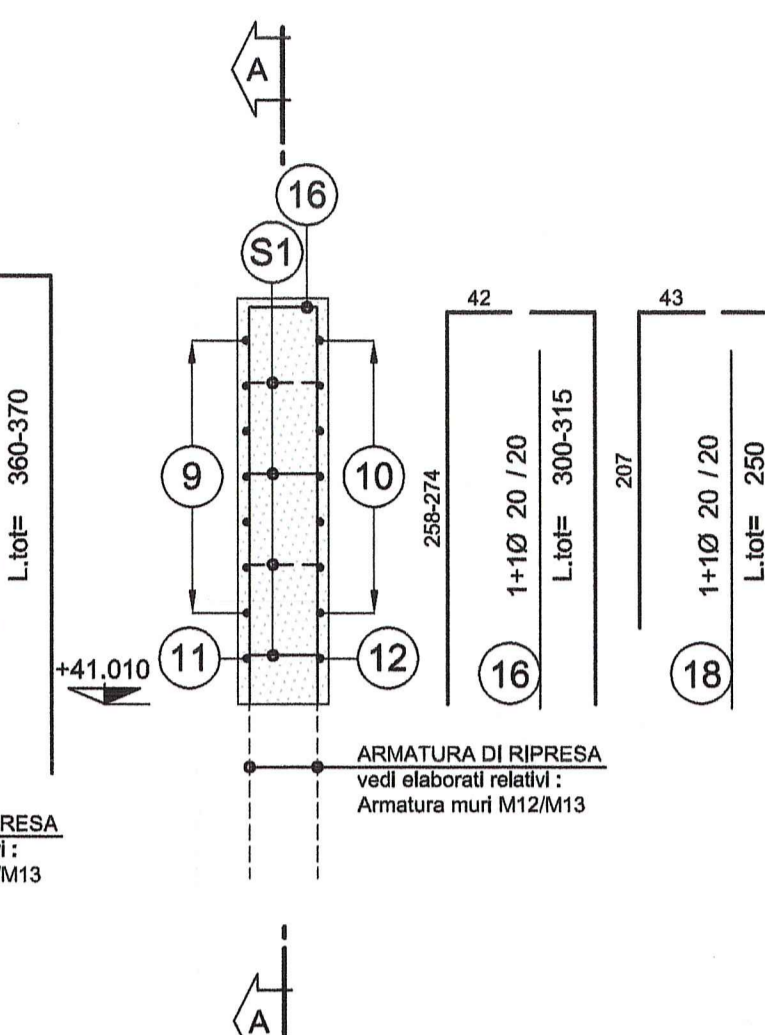
SEZIONE E-E



SEZIONE B-B



SEZIONE C-C



DESCRIZIONE DELLA MODIFICA
MODIFICA ARMATURE PER AGGIORNAMENTO CARPENTERIE

Autocomunale della CISA S.p.A. logo and address: Via Combaoro 26/A - Frazione Ponte Taro - 43015 NOCETO (PR)

IMPRESA PIZZAROTTI logo and address: Via Combaoro 26/A - Frazione Ponte Taro - 43015 NOCETO (PR)

PROGETTO ESECUTIVO

Autostada della CISA A15 RACCORDO AUTOSTRADALE A15/A22 CORRIDOIO PLURIMODALE TIRRENO-BRENNERO RACCORDO AUTOSTRADALE FRA L' AUTOSTRADA DELLA CISA-FONTEVIVO E L' AUTOSTRADA DEL BRENNERO-NOGAROLE ROCCA (VR). 1 LOTTO.

PROGETTAZIONE DI: PIZZAROTTI

PROGETTISTA: GIOVANNA CASSANI

COORDINATORE PER LA SICUREZZA IN FASE DI PROGETTAZIONE: ING. GIOVANNI MARIA CEPPOZZI

PROGETTISTA RESPONSABILE INTEGRAZIONE PRESTAZIONI SPECIALISTICHE: IMPRESA PIZZAROTTI & C. S.p.A.

INGEGNERI RESPONSABILI: ING. PIETRO MAZZOLI

Asse principale Galleria artificiale interconnessione A1/A15 Struttura - Imbocco Sud Muri di protezione piedritto bordo laterale e spartitraffico - Armatura

18/03/2014

Scale: 1:50

NO	DATA	DESCRIZIONE REVISIONE	PROGETTISTA	VERIFICATORE
A	27/03/2014	REVISIONE PROGETTO ESECUTIVO	G. MONDINI	G. CASSANI
B	12/12/2014	ISTRUTTORIA A15	G. MONDINI	MAZZOLI