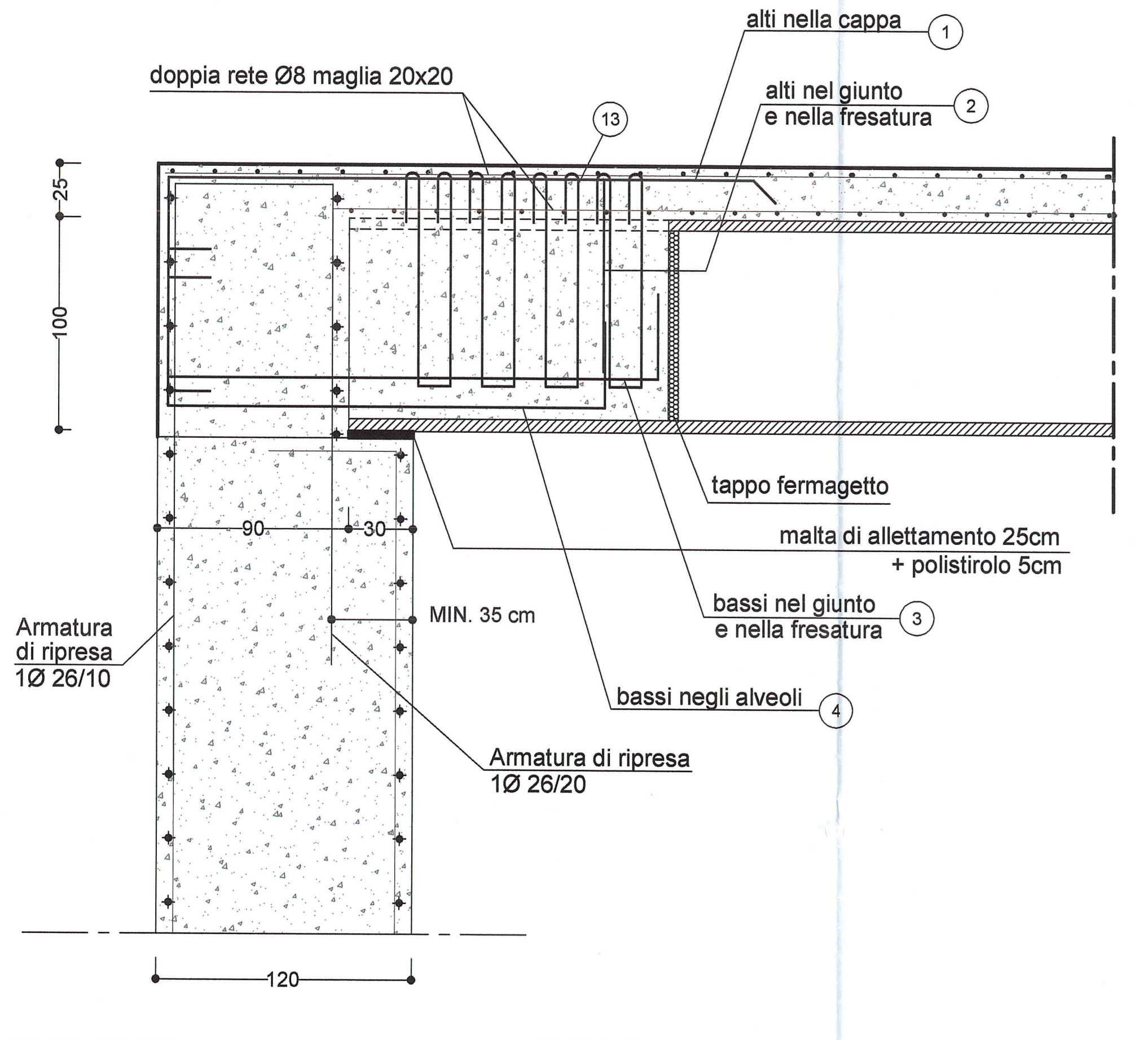


PARTICOLARE APPOGGIO LATERALE

SCALA 1:20

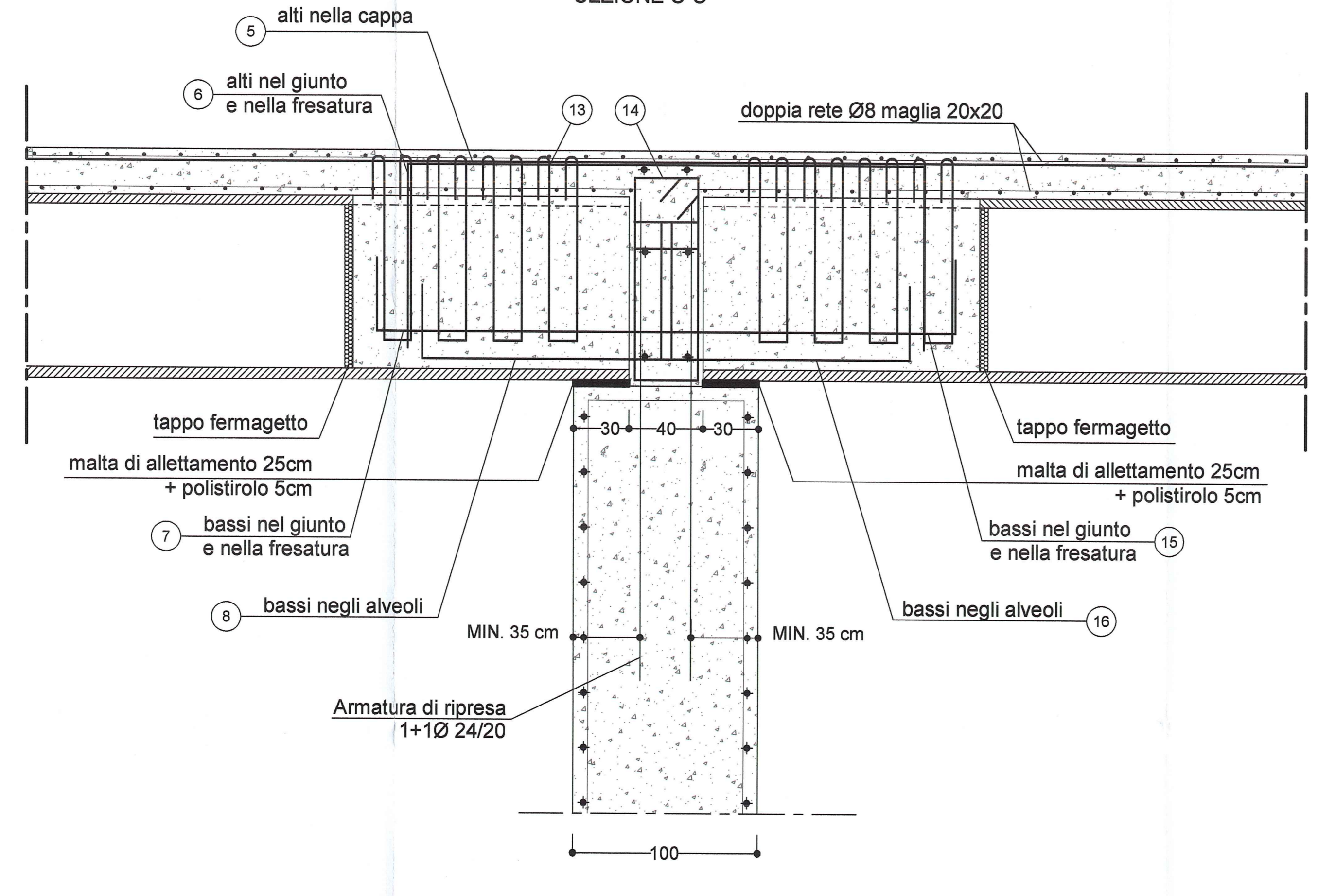
ELEMENTO TIPO I - FORAP 100
SEZIONE C-C



PARTICOLARE APPOGGIO CENTRALE

SCALA 1:20

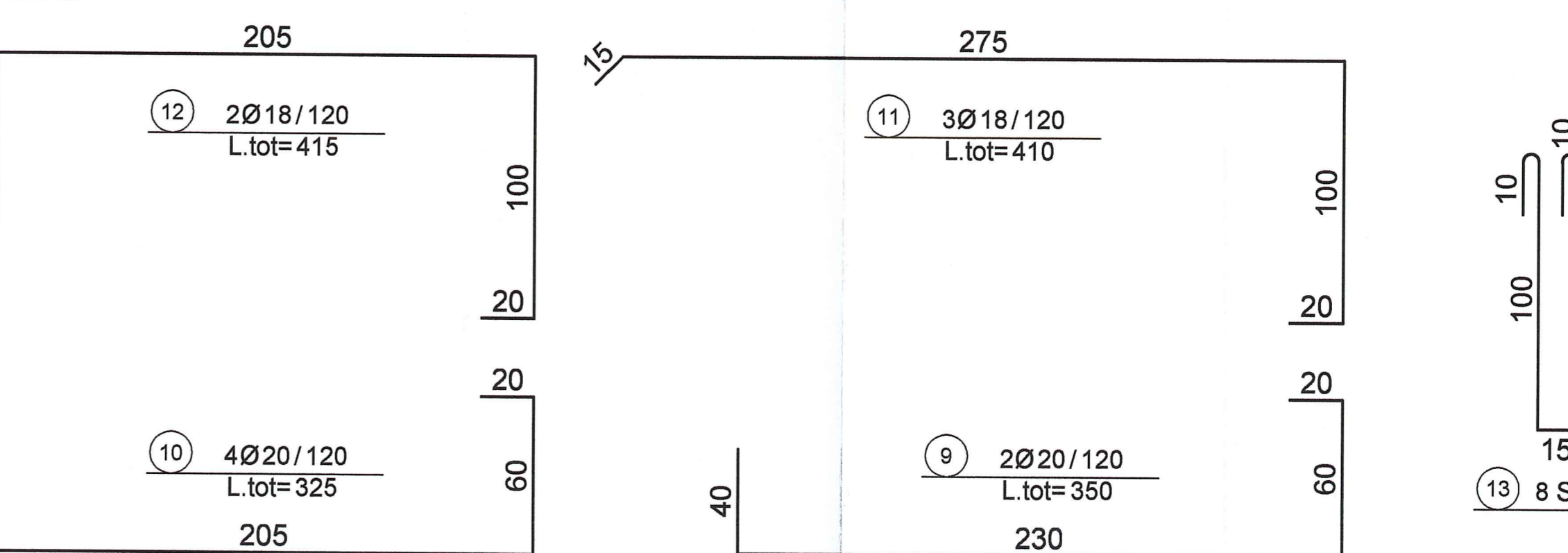
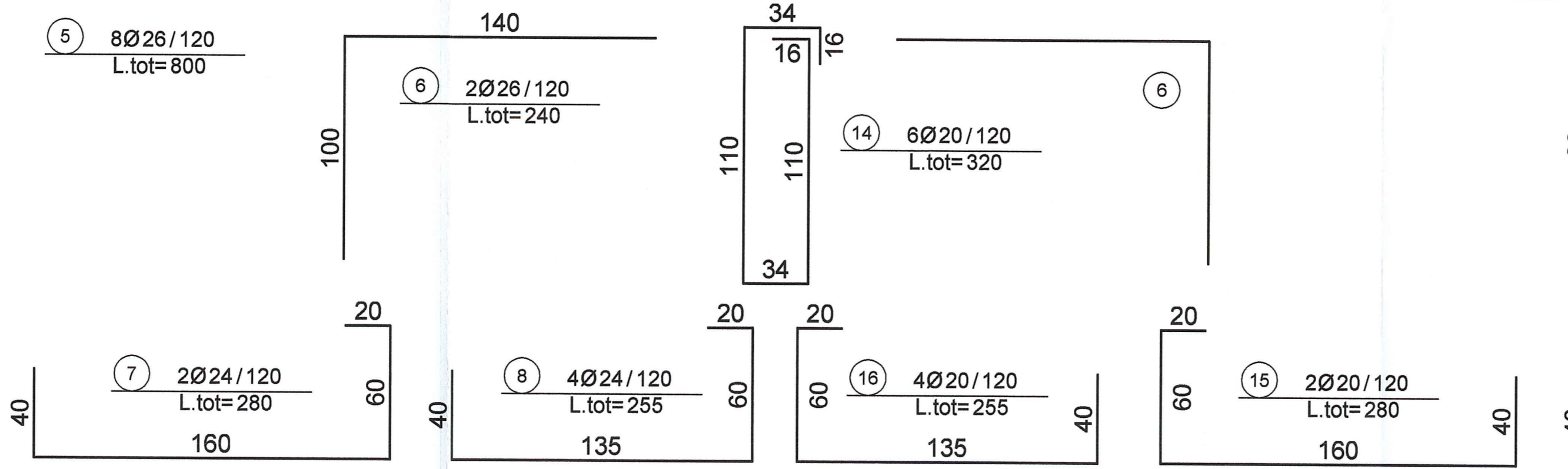
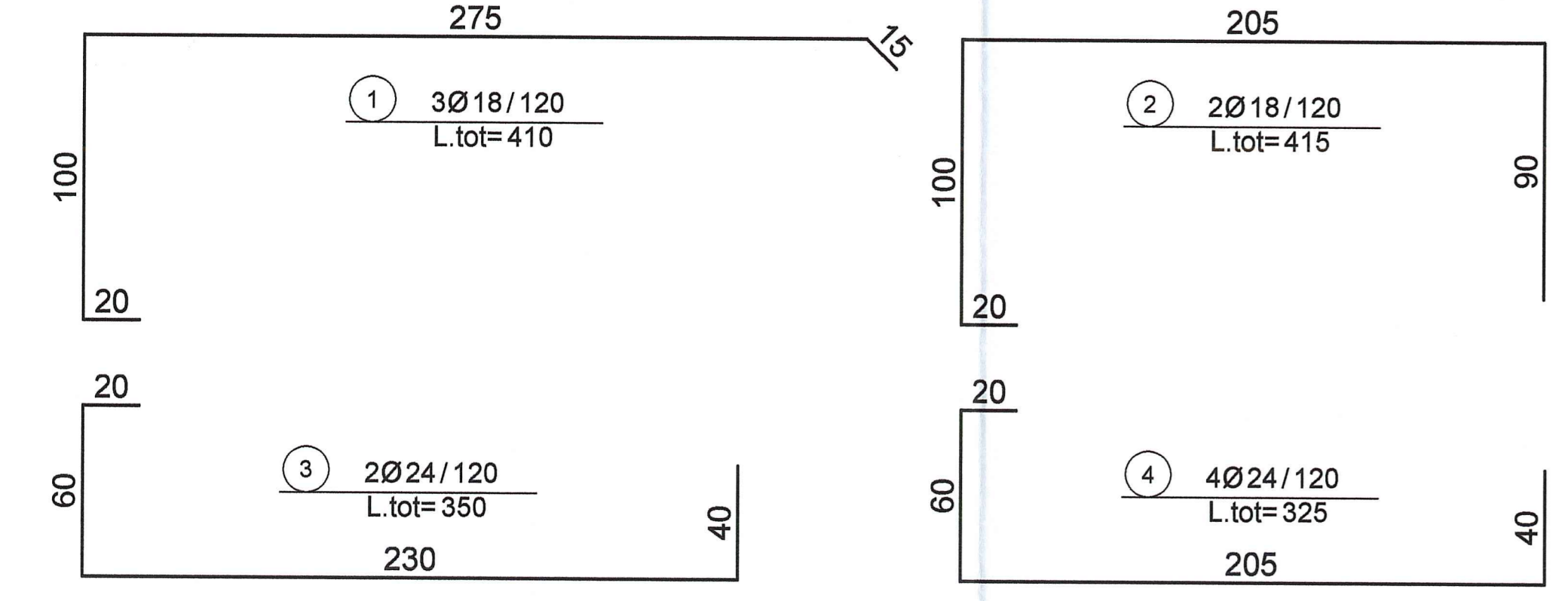
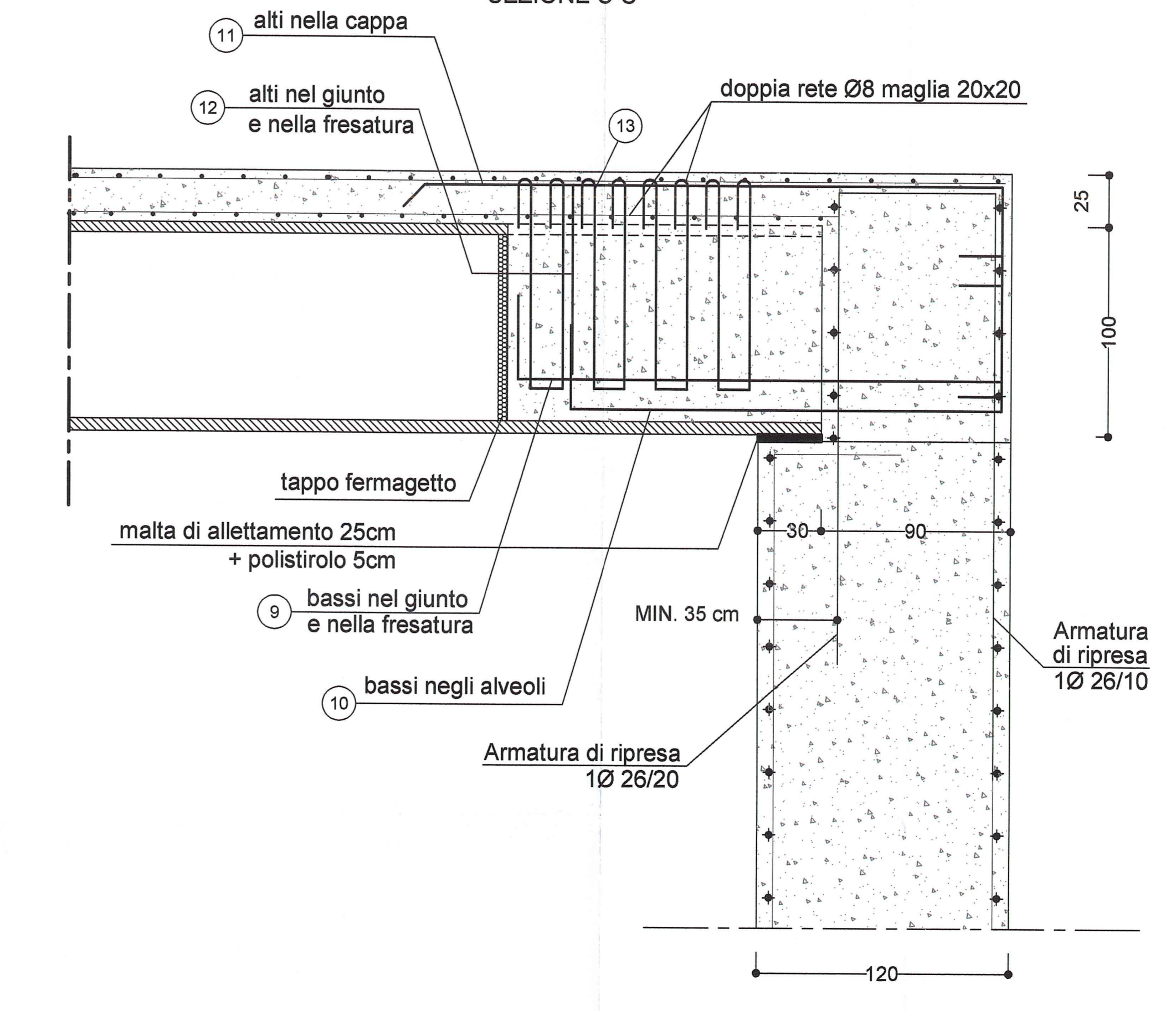
ELEMENTO TIPO I - FORAP 100
SEZIONE C-C



PARTICOLARE APPOGGIO LATERALE

SCALA 1:20

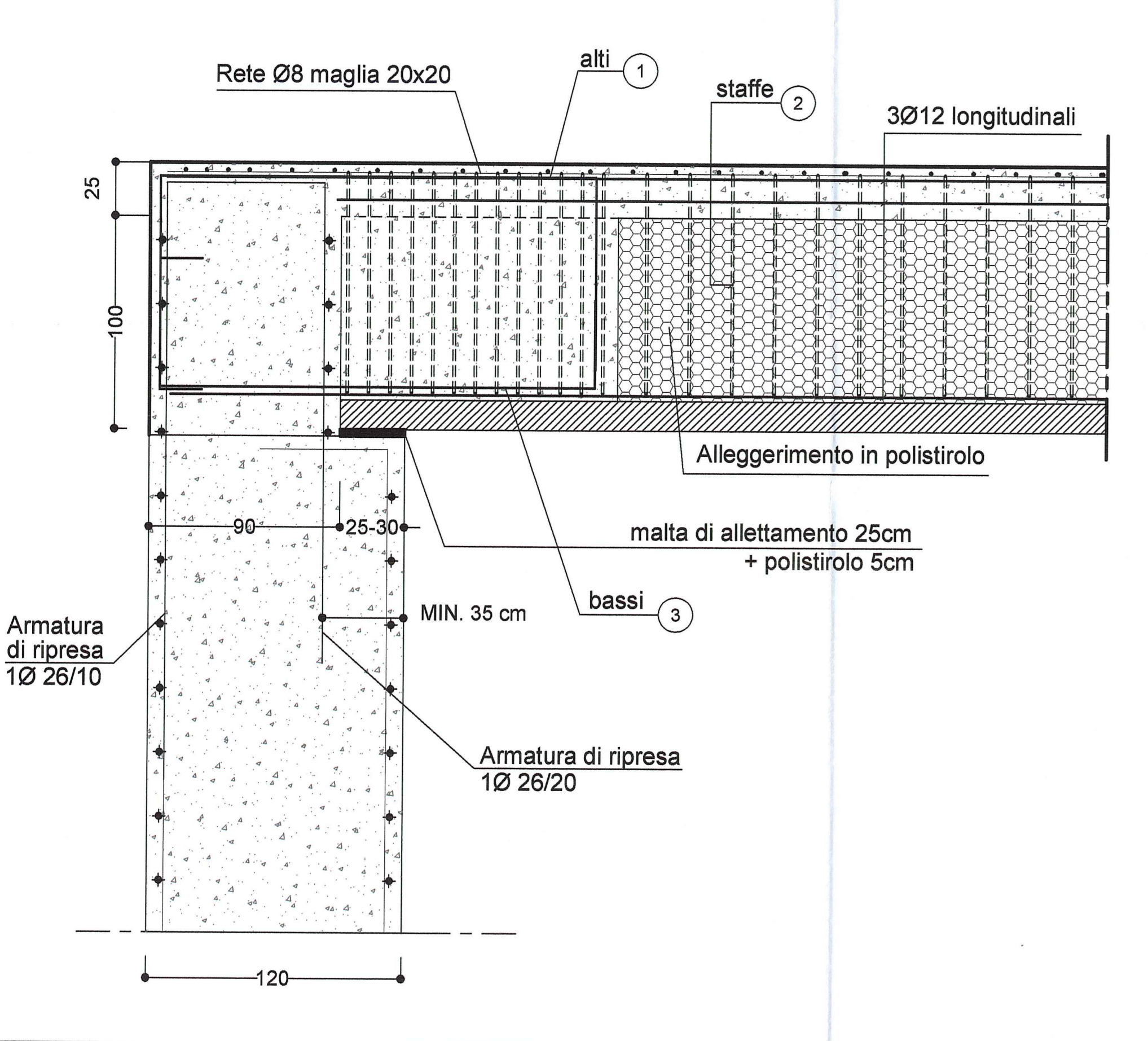
ELEMENTO TIPO I - FORAP 100
SEZIONE C-C



PARTICOLARE APPOGGIO LATERALE

SCALA 1:20

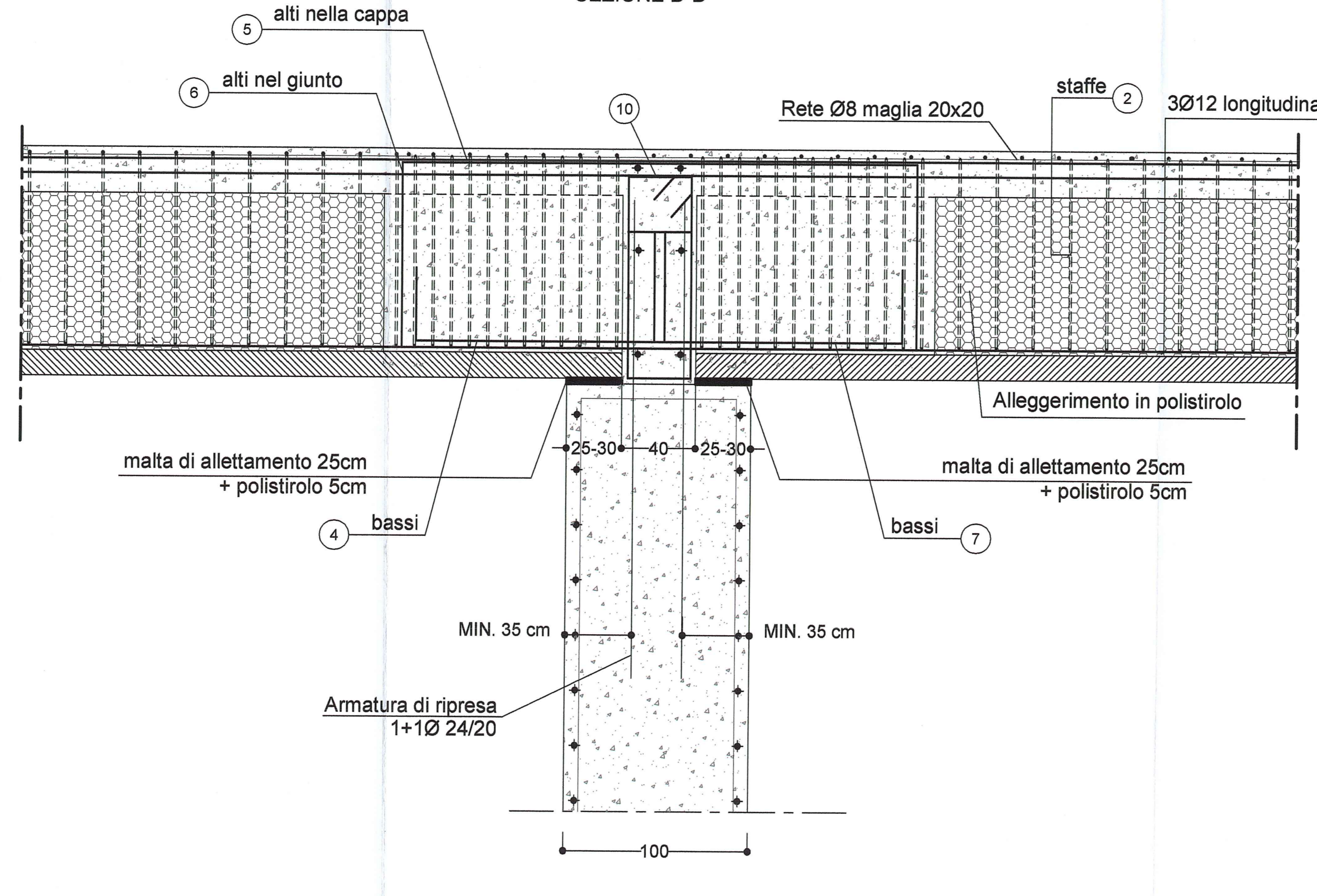
ELEMENTO TIPO L - PAV 100
SEZIONE D-D



PARTICOLARE APPOGGIO CENTRALE

SCALA 1:20

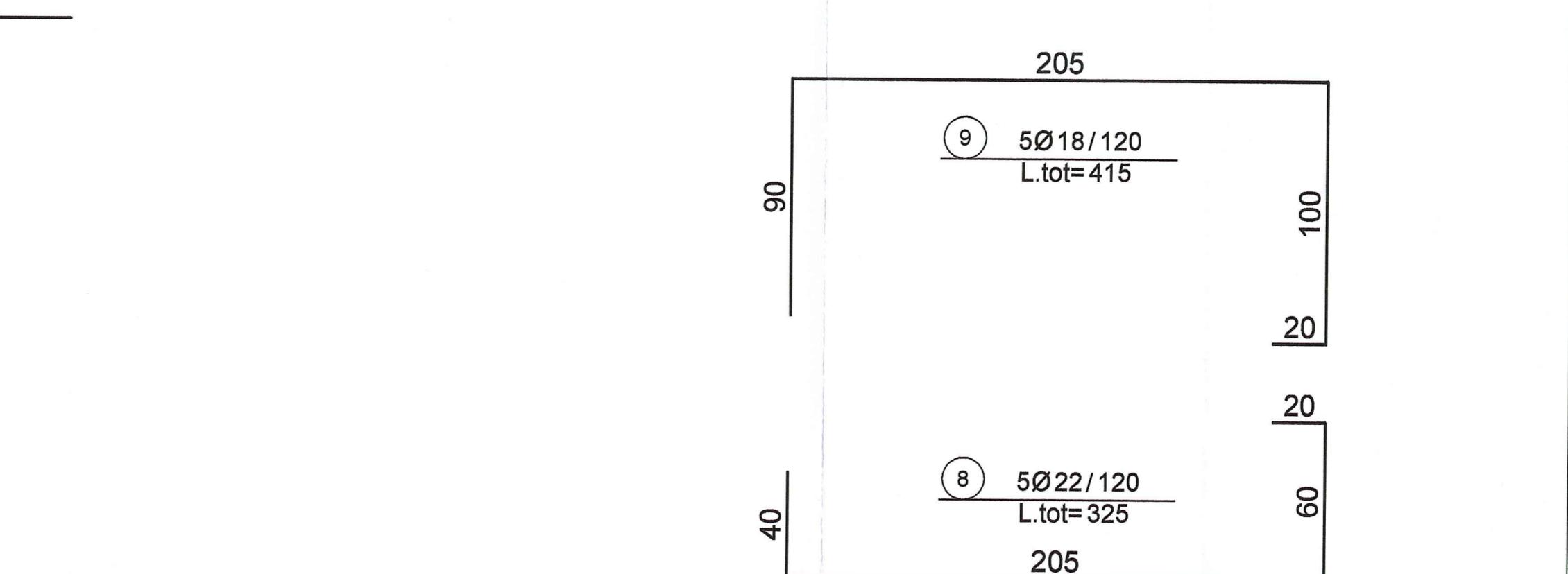
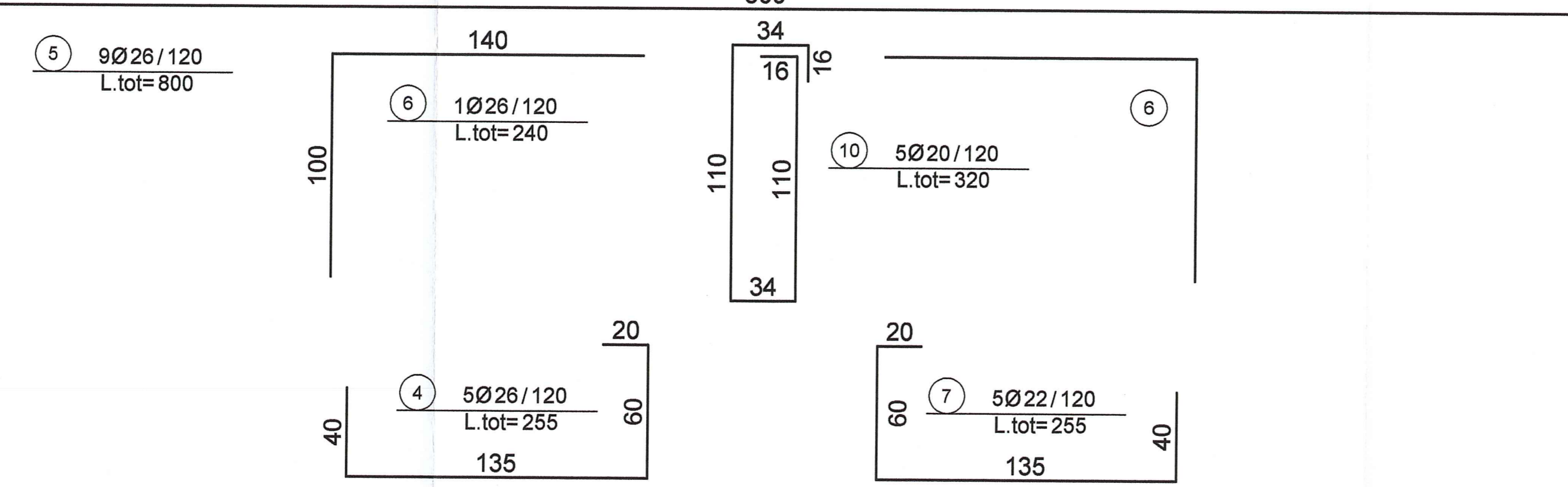
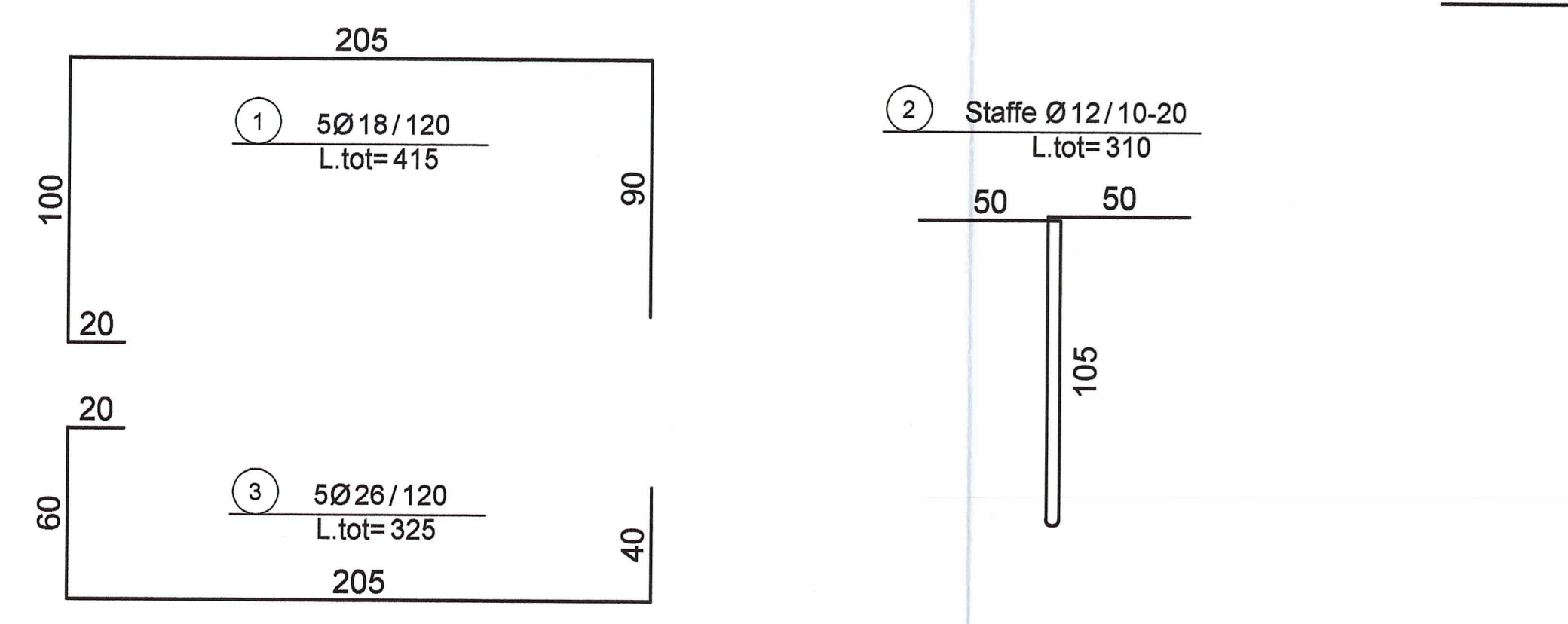
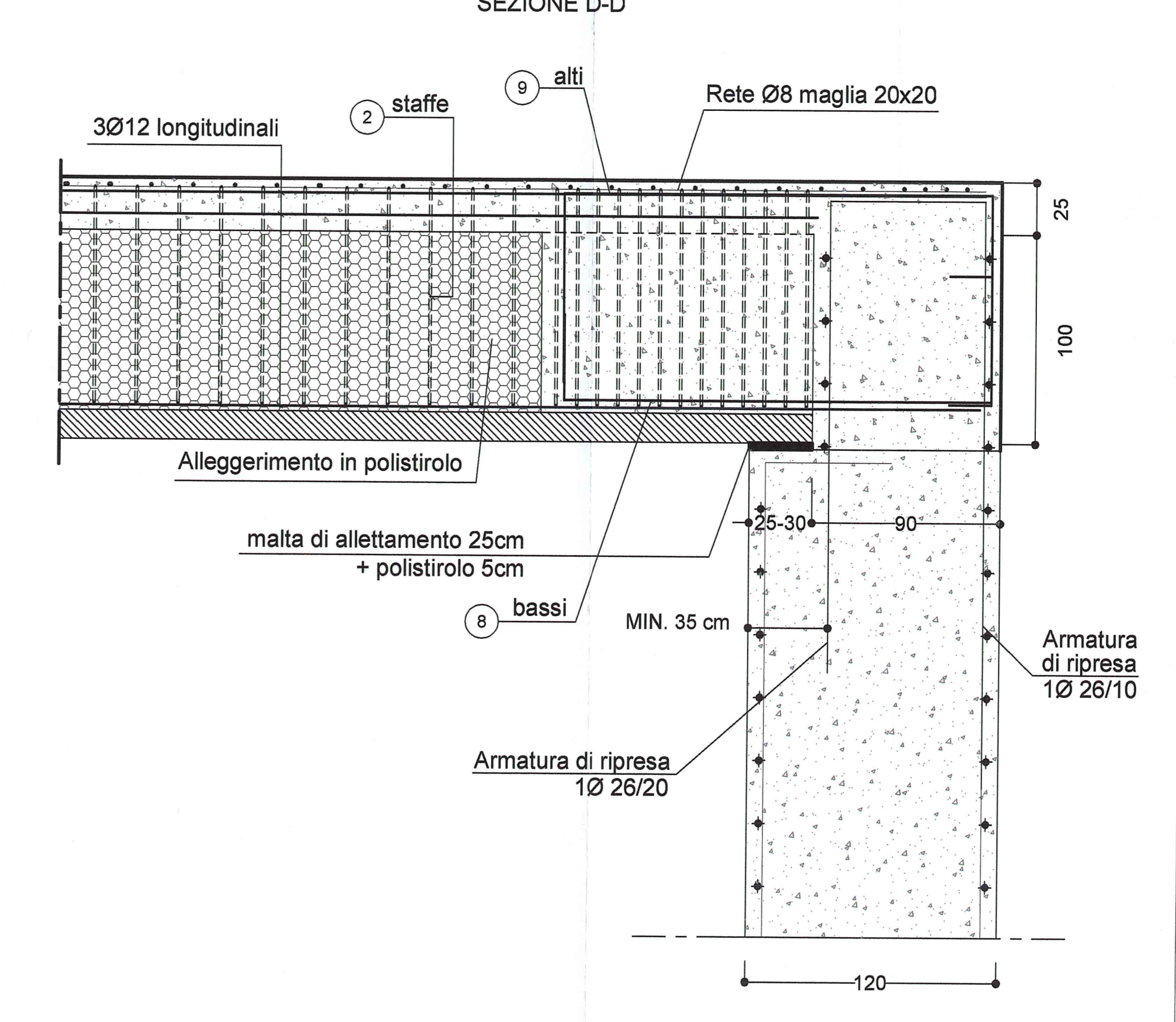
ELEMENTO TIPO L - PAV 100
SEZIONE D-D



PARTICOLARE APPOGGIO LATERALE

SCALA 1:20

ELEMENTO TIPO L - PAV 100
SEZIONE D-D



NOTA BENE
- PER I DETTAGLI DELL'IMPERMEABILIZZAZIONE VEDI ELABORATO SPECIFICO: RAAA1ERAPGA01SPC003
- PER LE CARATTERISTICHE DEI MATERIALI STRUTTURALI SI RIMANDA ALL'ELABORATO SPECIFICO: RAAA1ERAPGA01GSP001

Autocamionale della CISA S.p.A. - Via Camborara 26/A - Frazione Ponte Taro - 43015 NOCETO (PR)
Autocamionale della CISA S.p.A.
RACCORDO AUTOSTRADALE A15/A22
CORRIDOIO PLURIMODALE TIRRENO-BRENNERO
RACCORDO AUTOSTRADALE FRA L'AUTOSTRADA DELLA CISA-FONTEVIVO (PR) E L'AUTOSTRADA DEL BRENNERO-NOGAROLE ROCCA (VR) - I LOTTO.
C.U.F. G6180400060008 C.I.G. 307068161E
PROGETTO ESECUTIVO
Autocamionale della CISA S.p.A.
Impresa Pizzarotti & C. s.p.a. - Ing. Pietro Mazzoli
Giovanna Cassani
idrosse engineering - ROCKSOIL - VIA