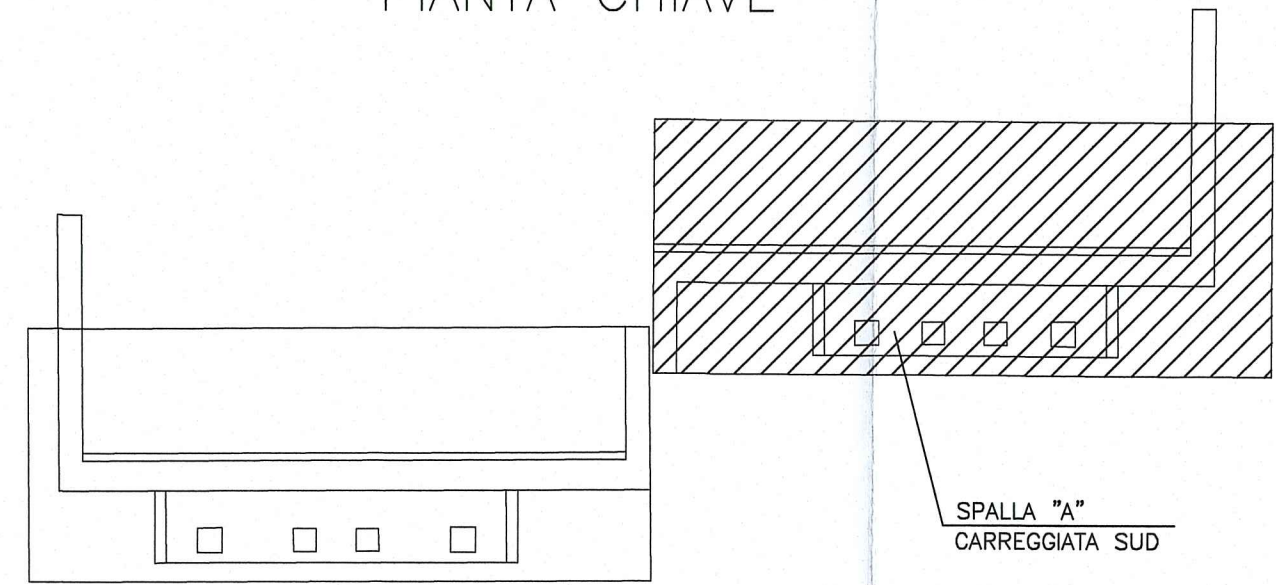
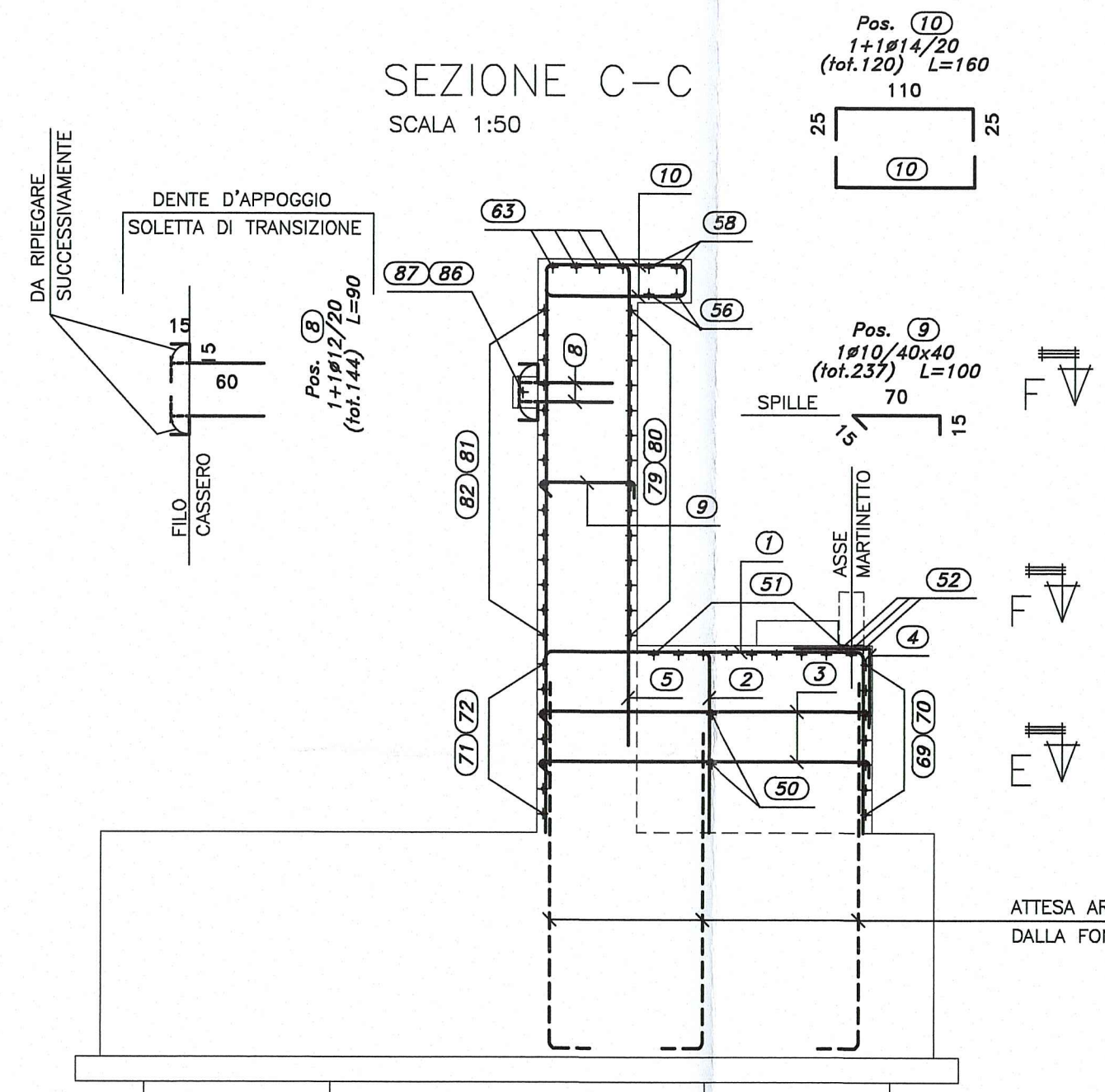


PIANTA CHIAVE

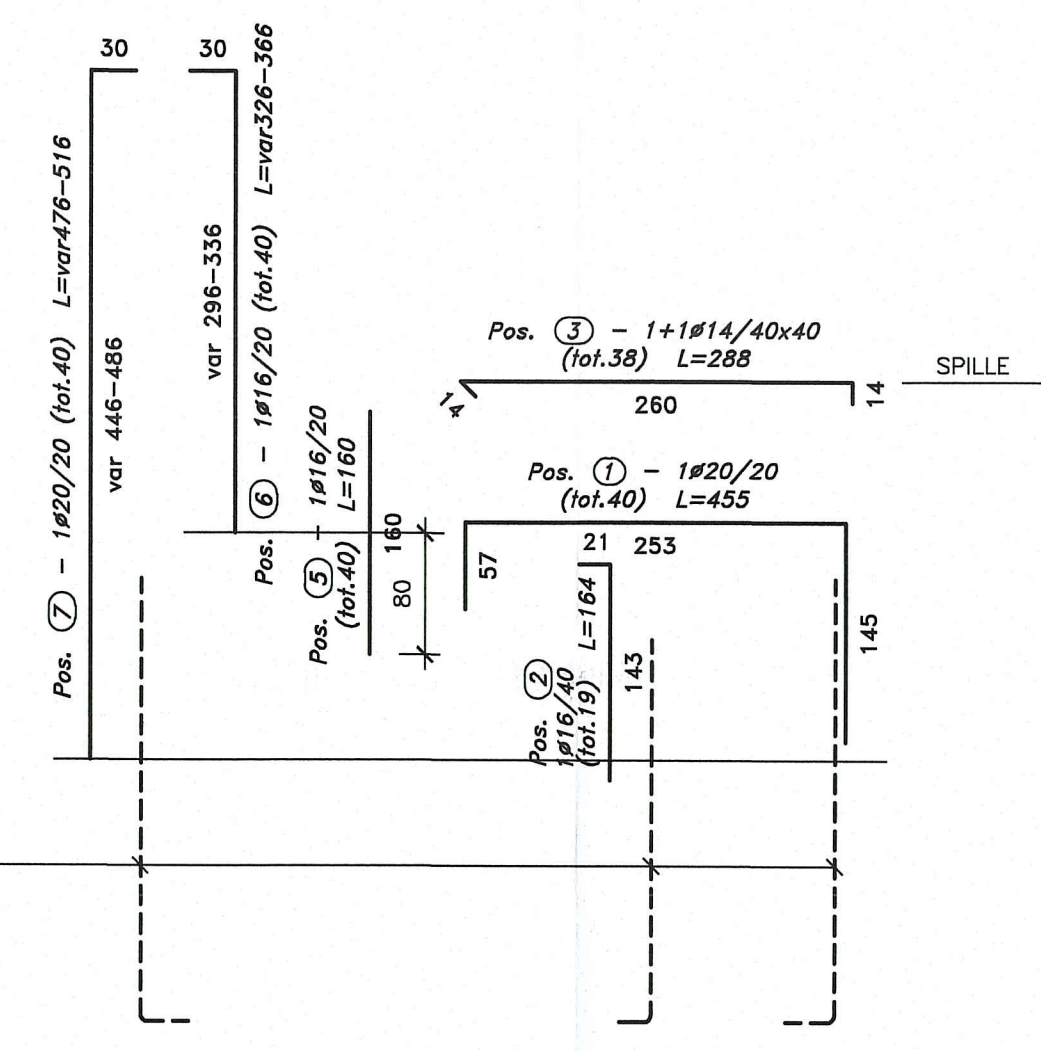


SEZIONE C-C  
SCALA 1:50

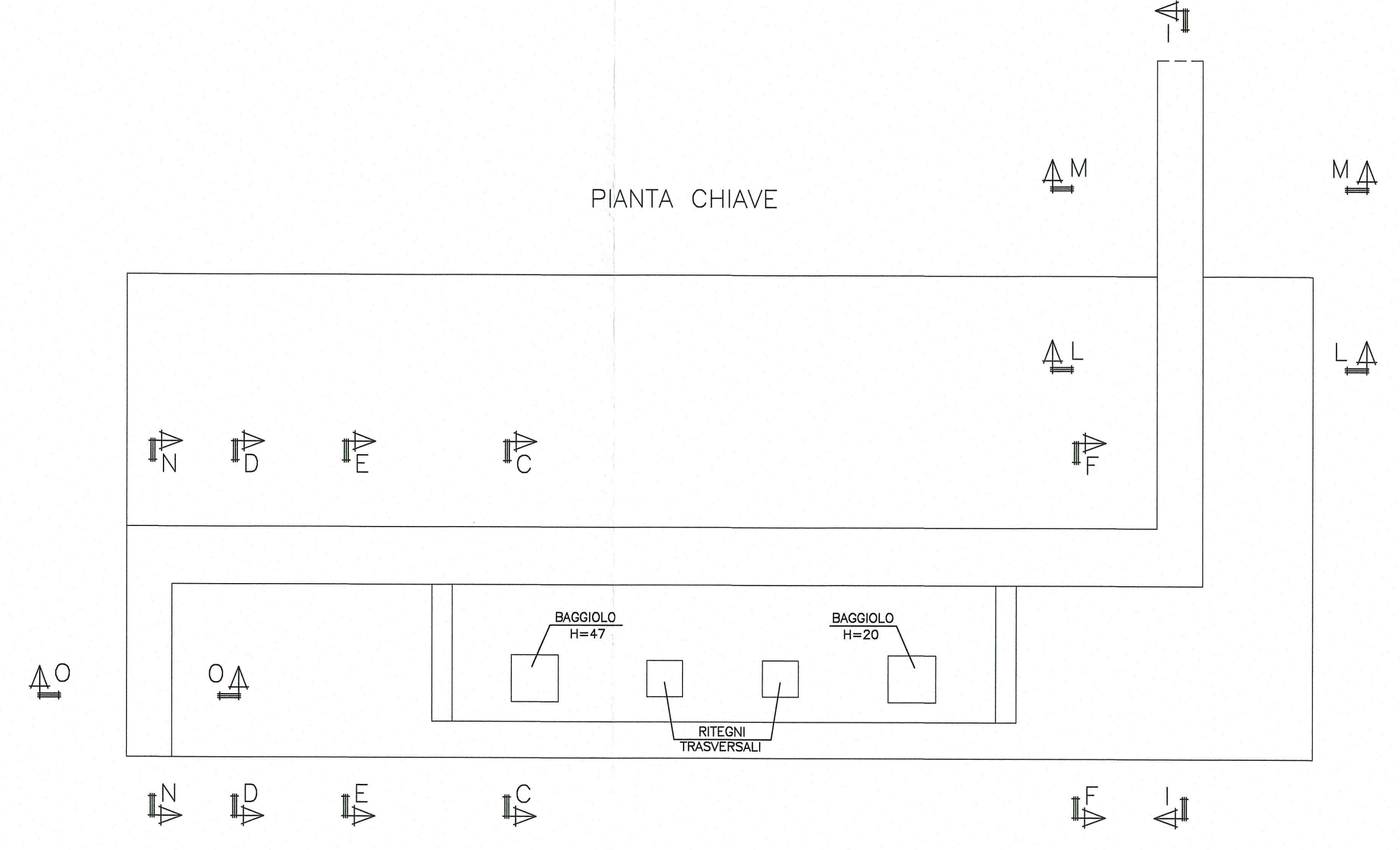


ATTESA ARMATURA ELEVAZIONE DALLA FONDAZIONE

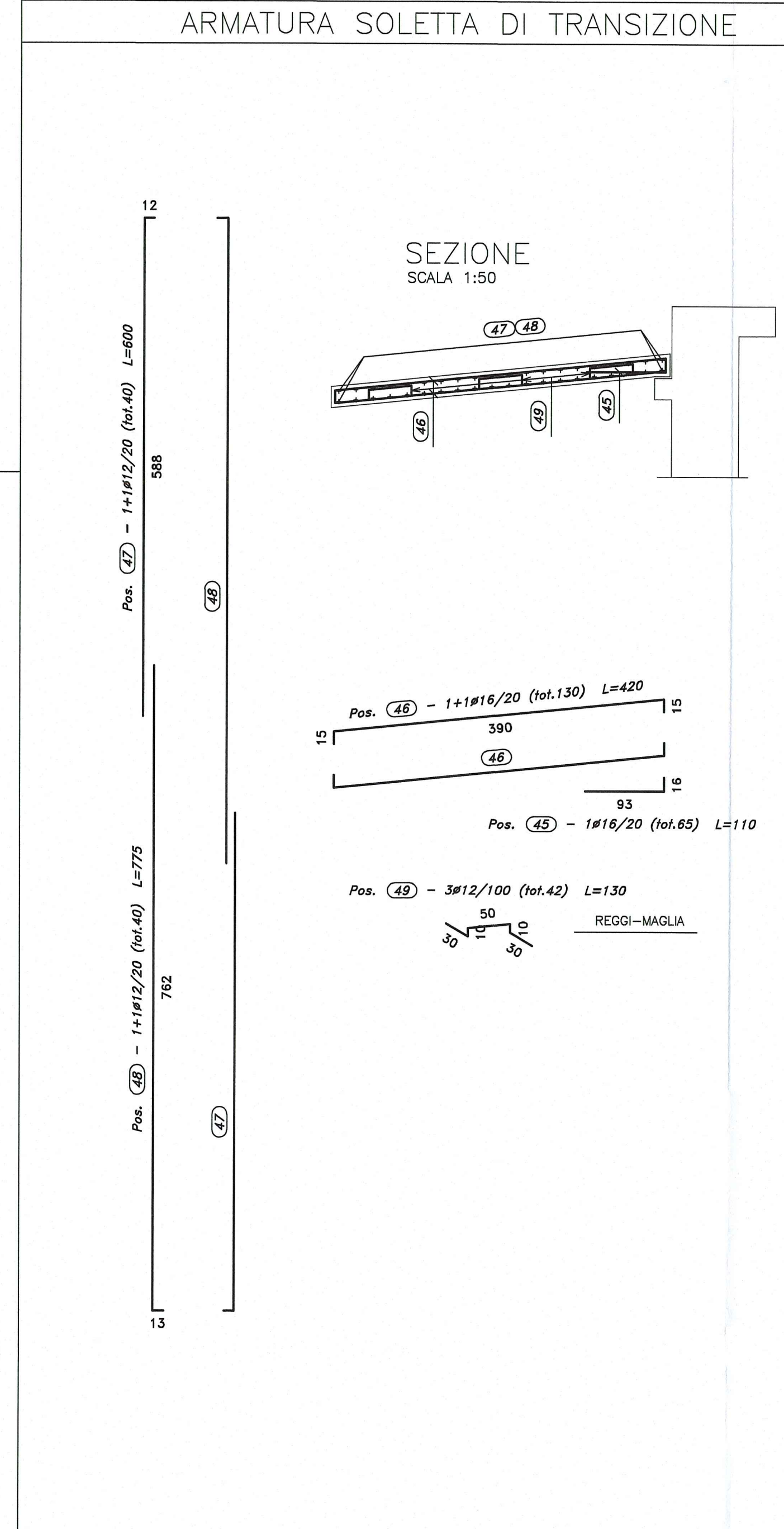
ARMATURA ZINCATI DI FRETTAGGIO DA DISPORRE SOTTO AI MARTINETTI coprifino = 2 cm



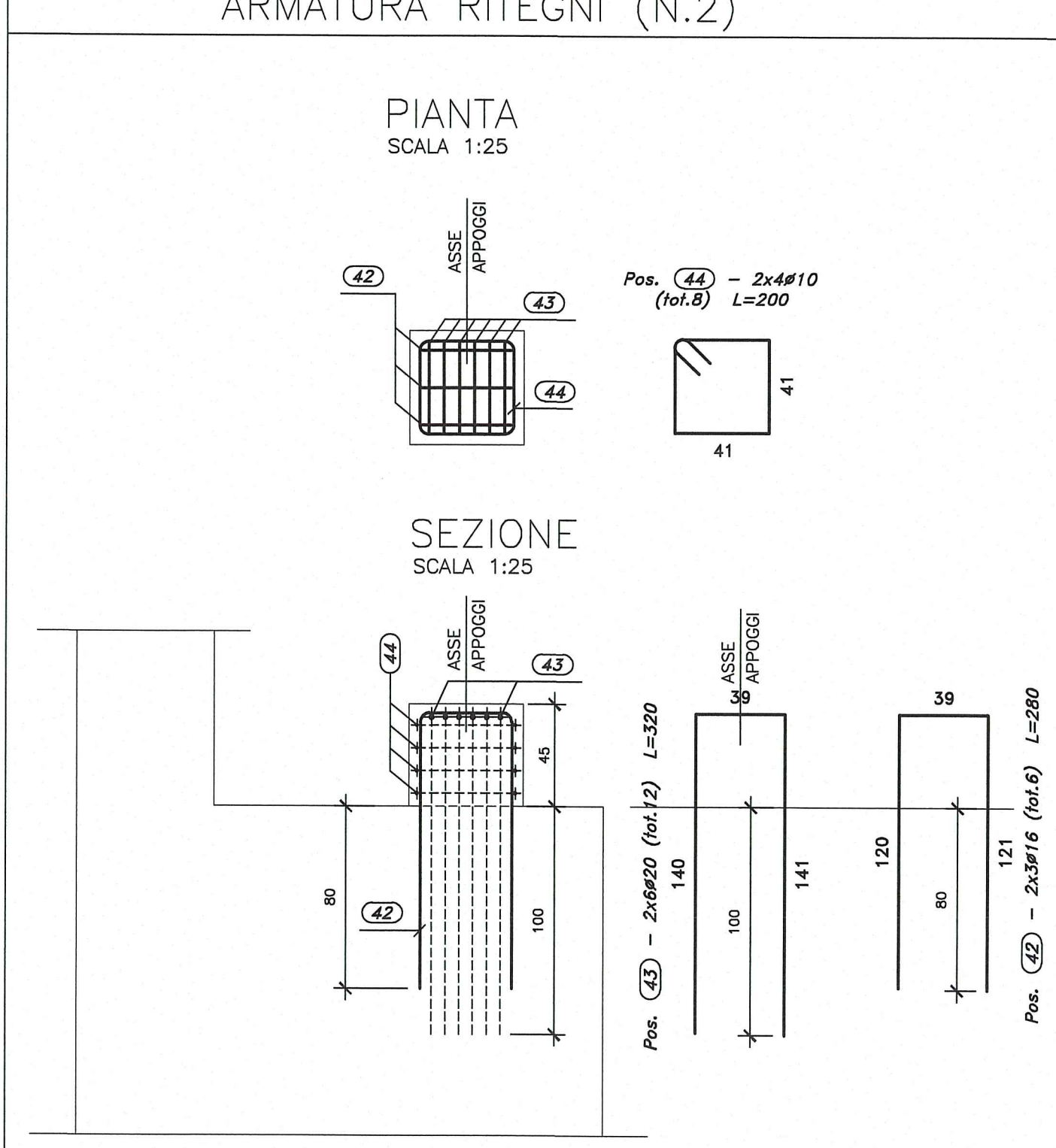
PIANTA CHIAVE



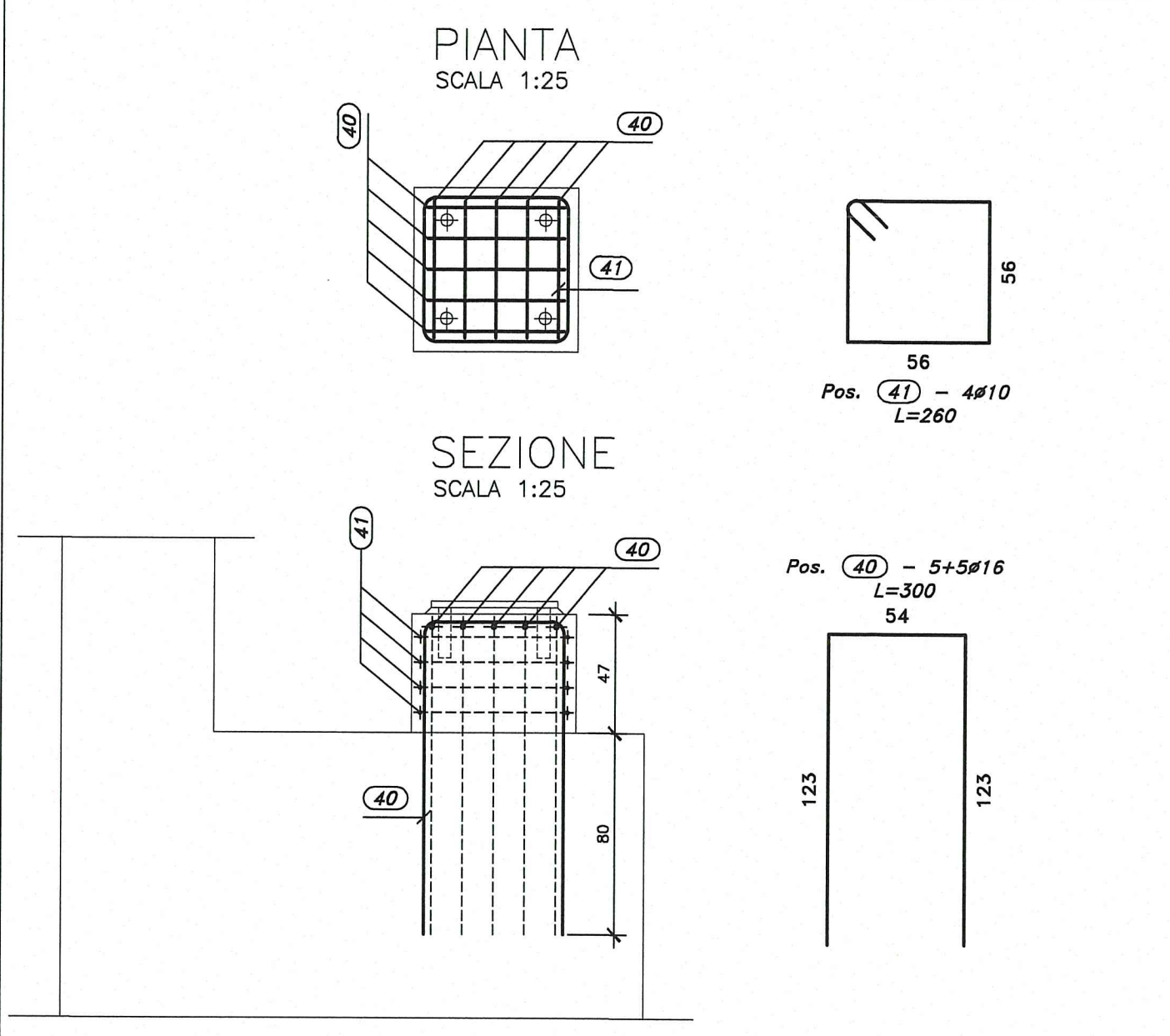
ARMATURA SOLETTA DI TRANSIZIONE



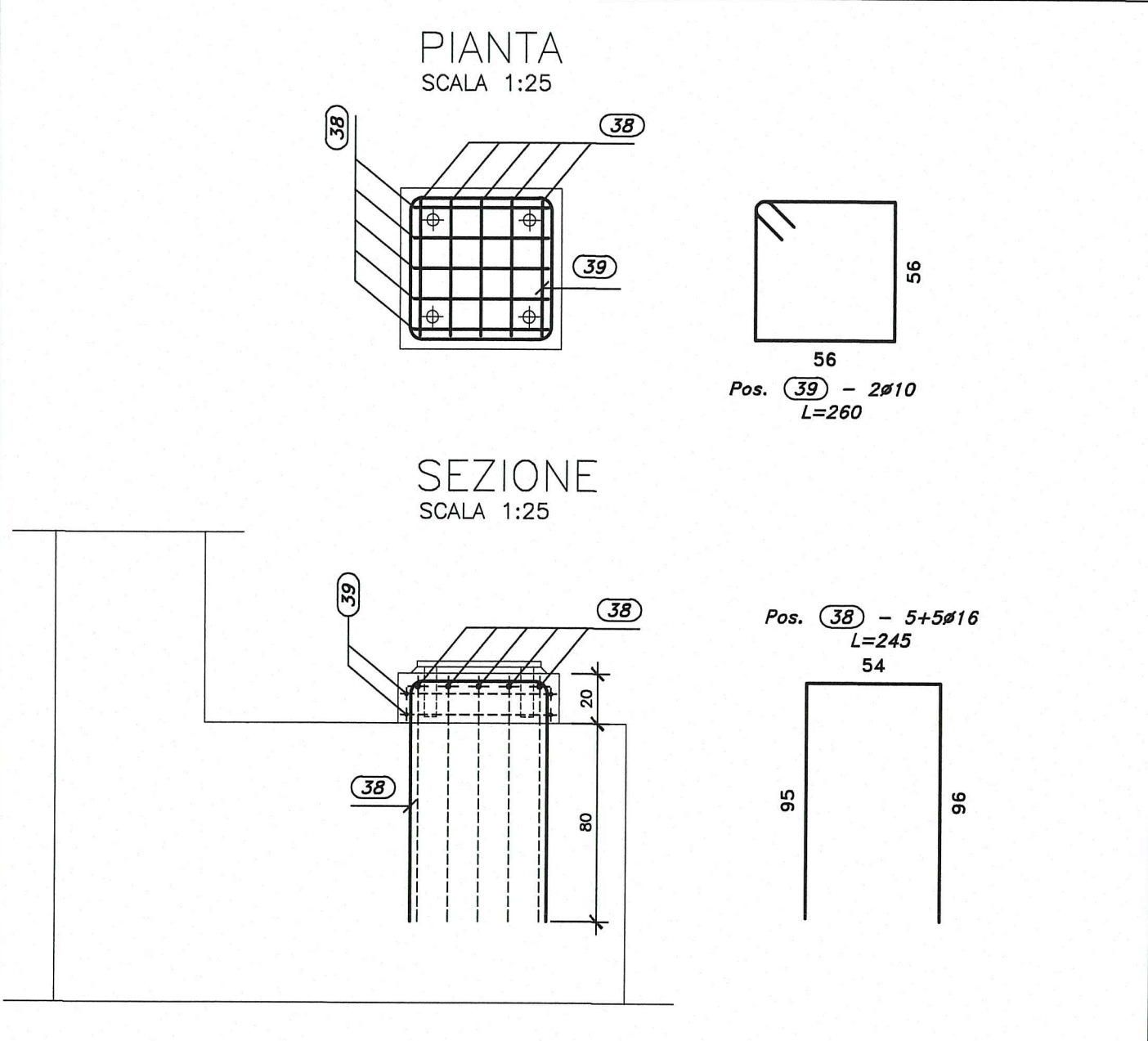
ARMATURA RITEGNI (N.2)



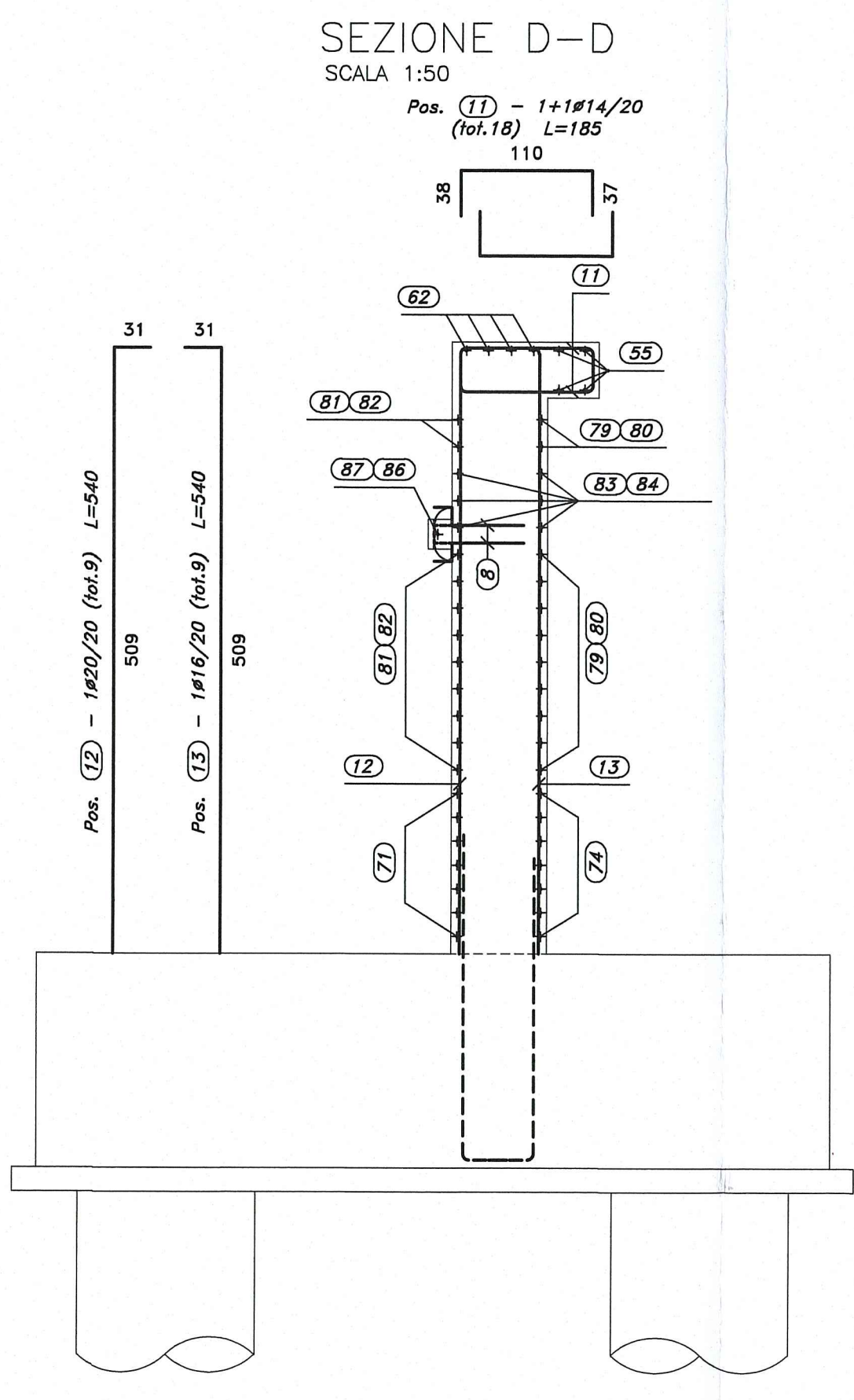
ARMATURA BAGGIOLO H=47



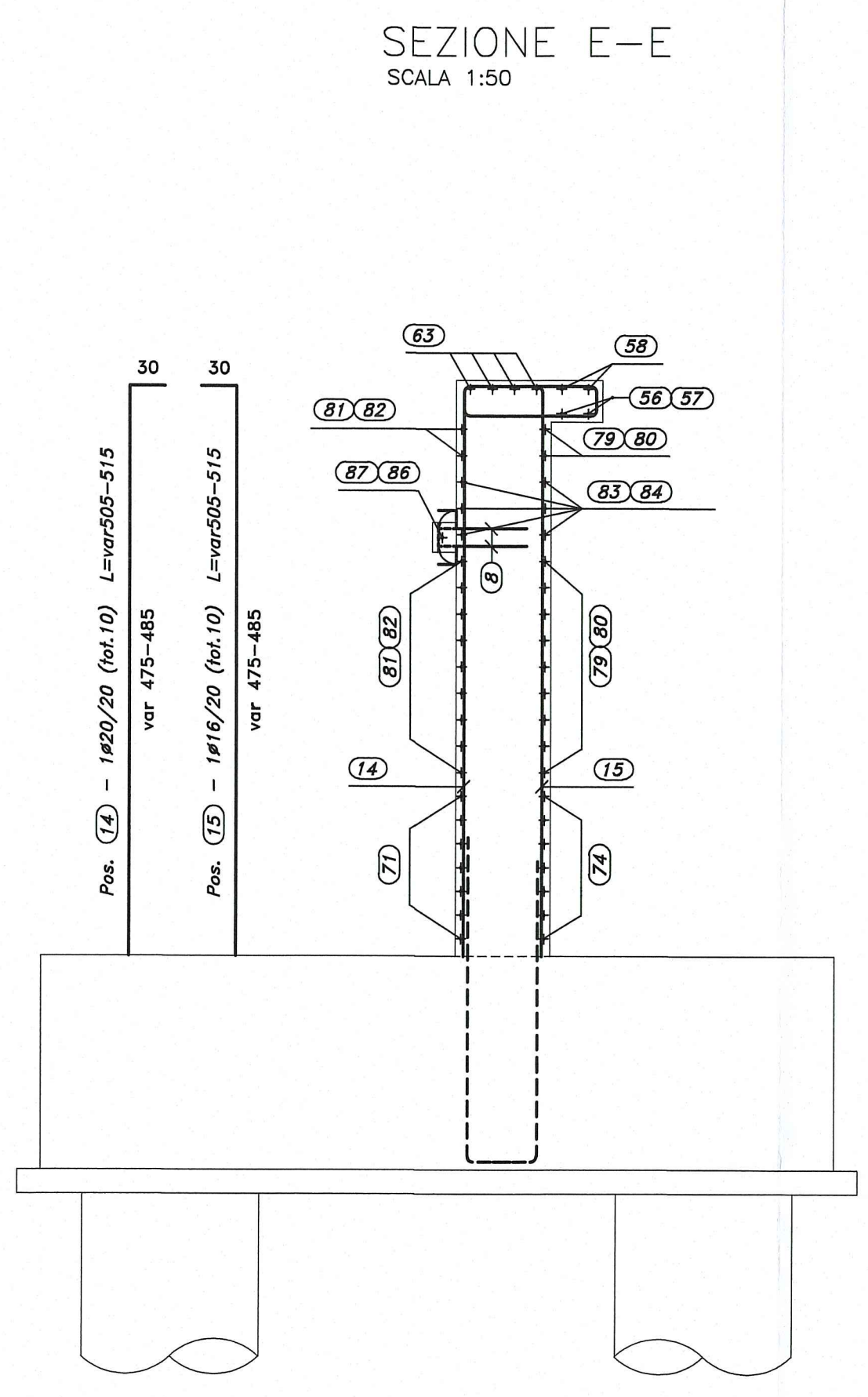
ARMATURA BAGGIOLO H=20



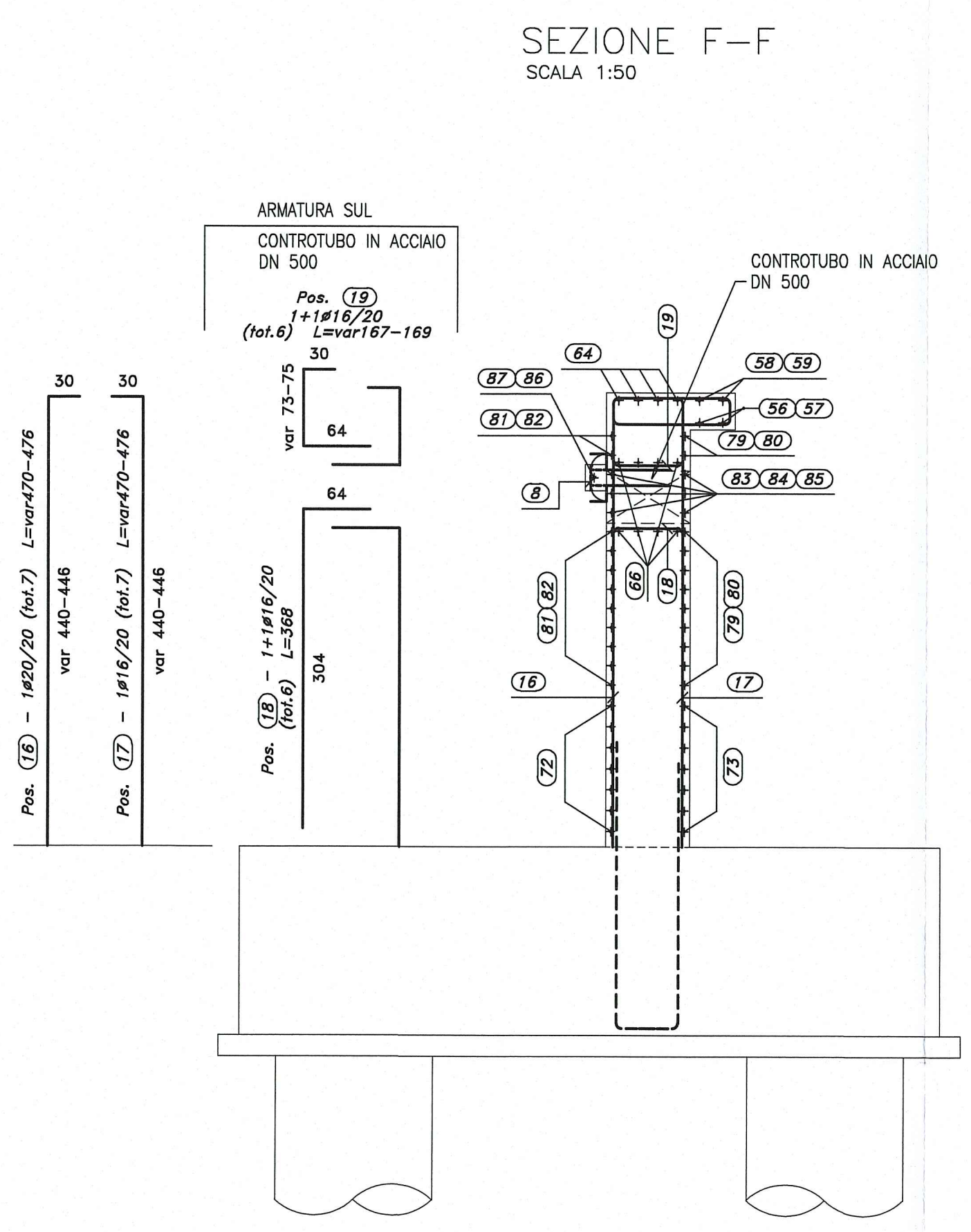
SEZIONE D-D  
SCALA 1:50



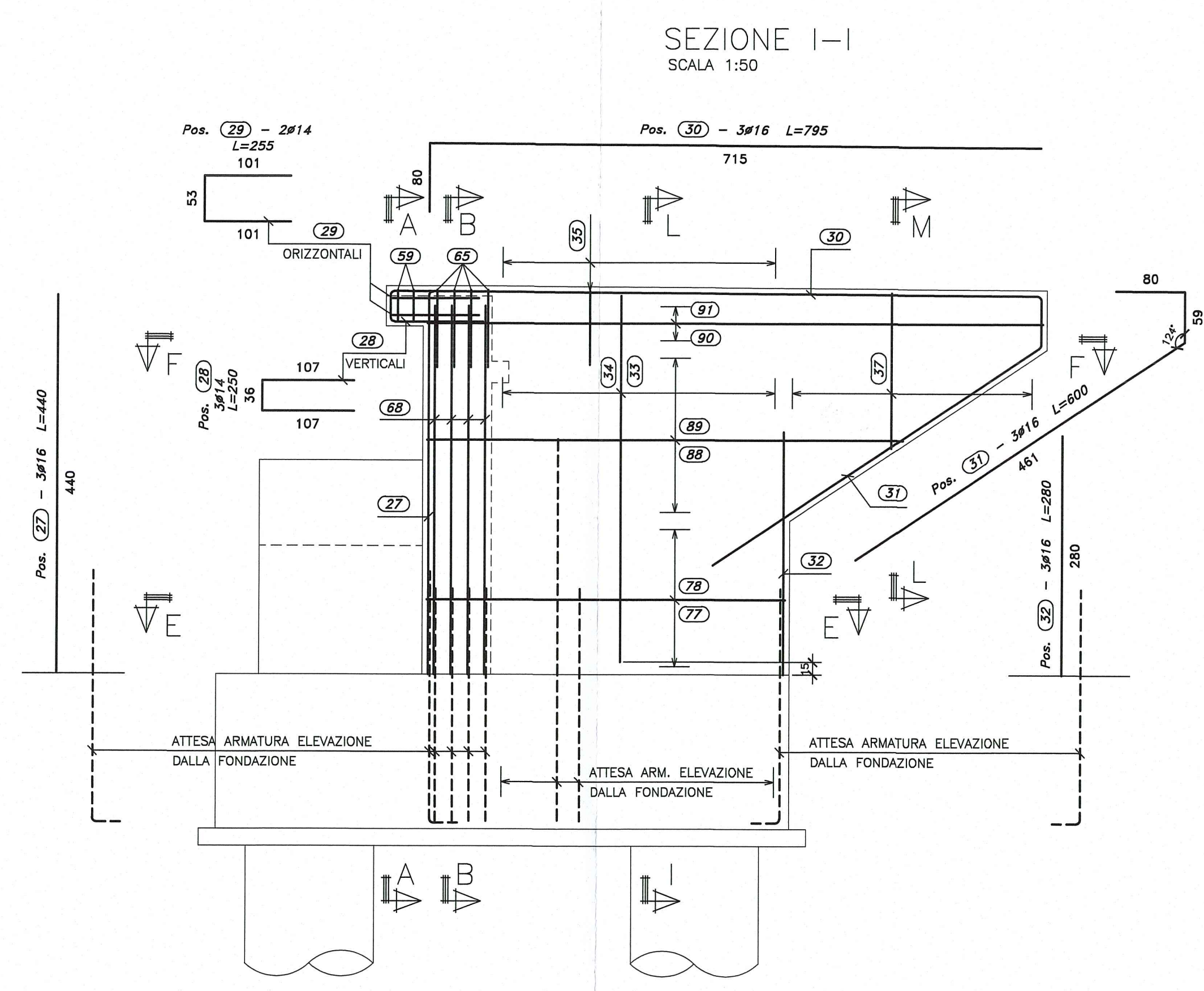
SEZIONE E-E  
SCALA 1:50



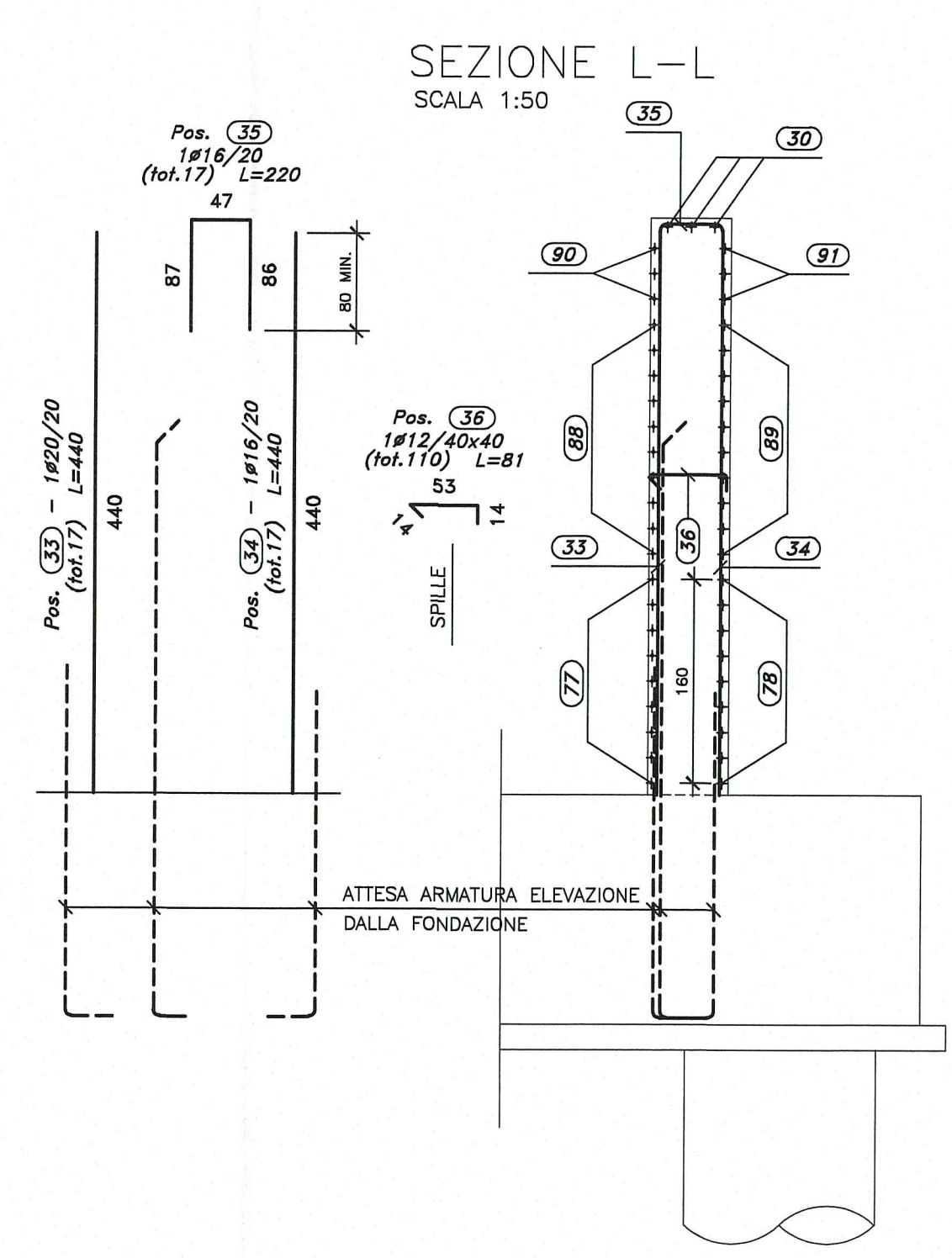
SEZIONE F-F  
SCALA 1:50



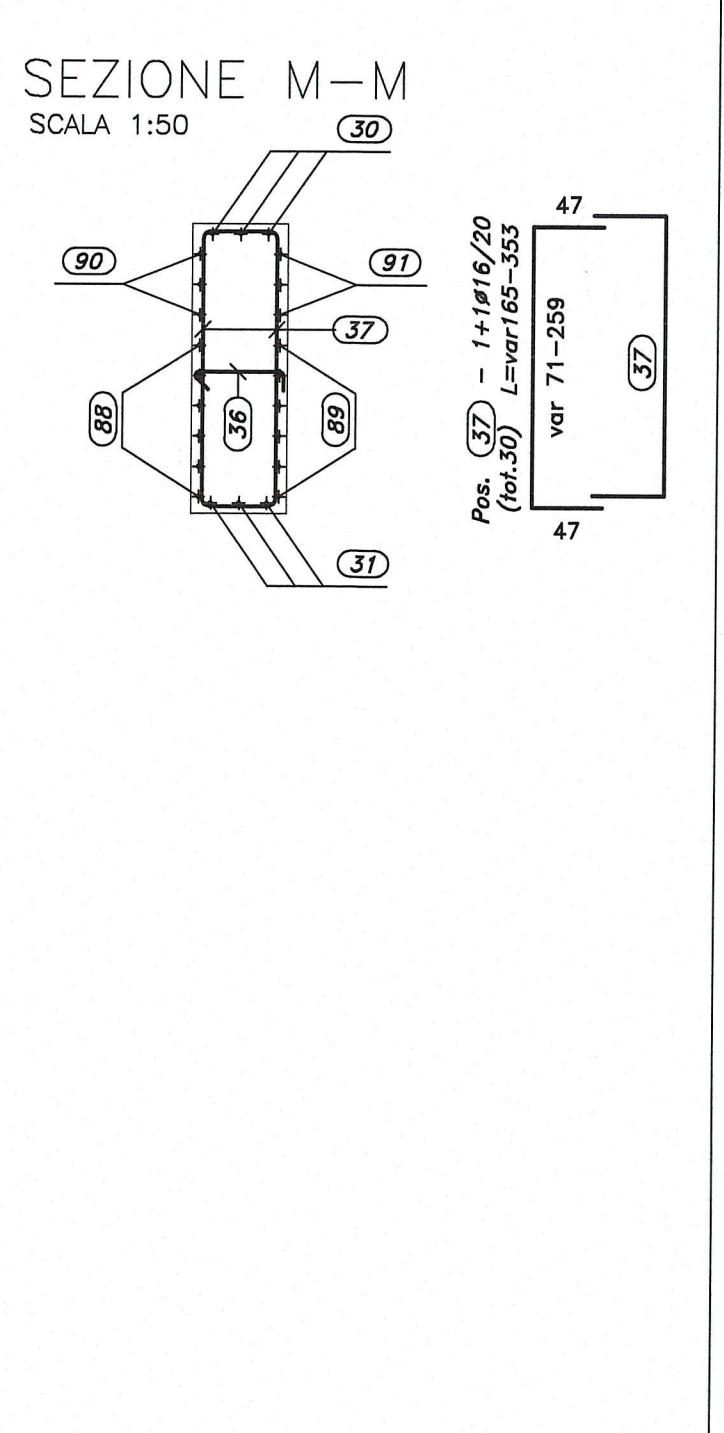
SEZIONE I-I  
SCALA 1:50



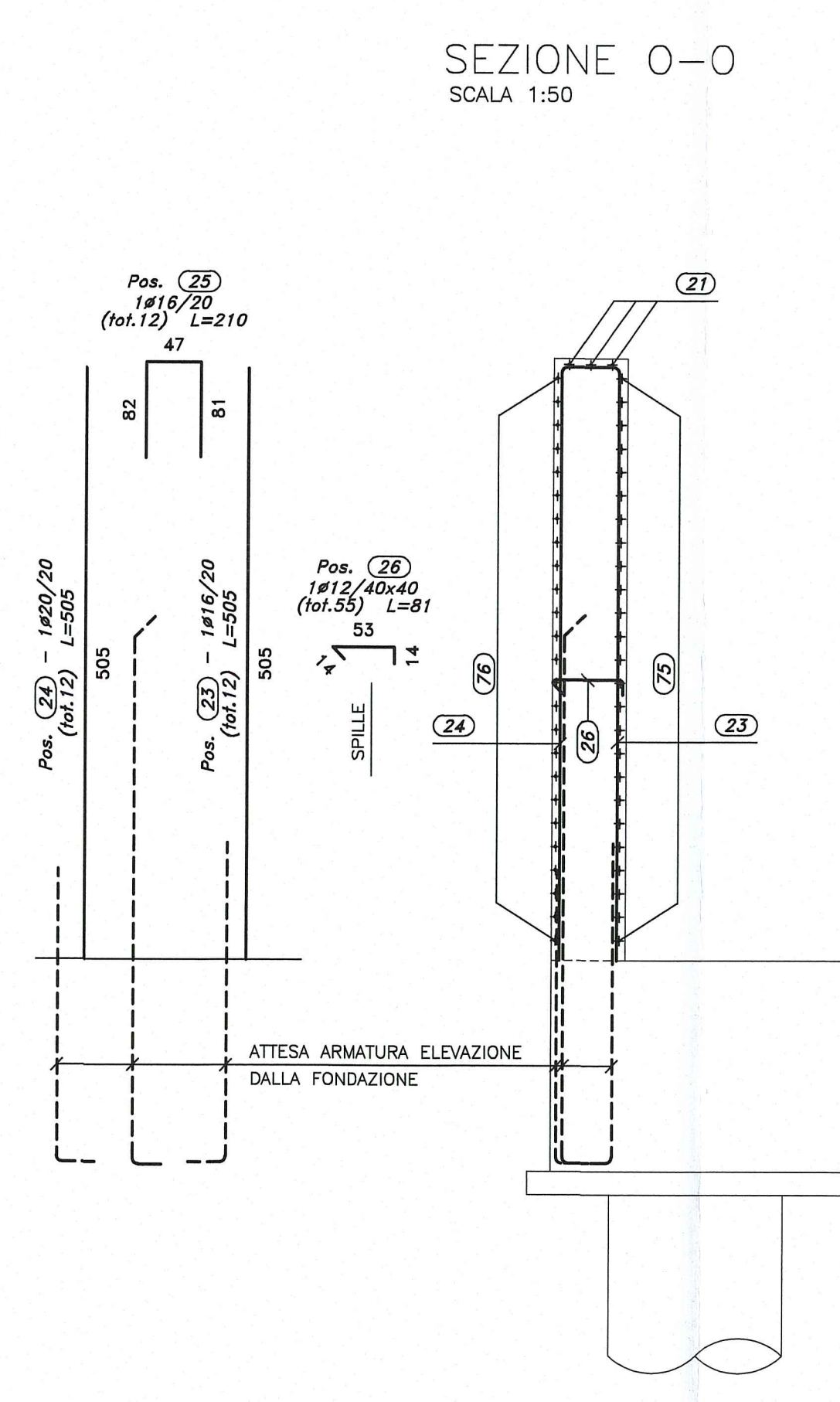
SEZIONE L-L  
SCALA 1:50



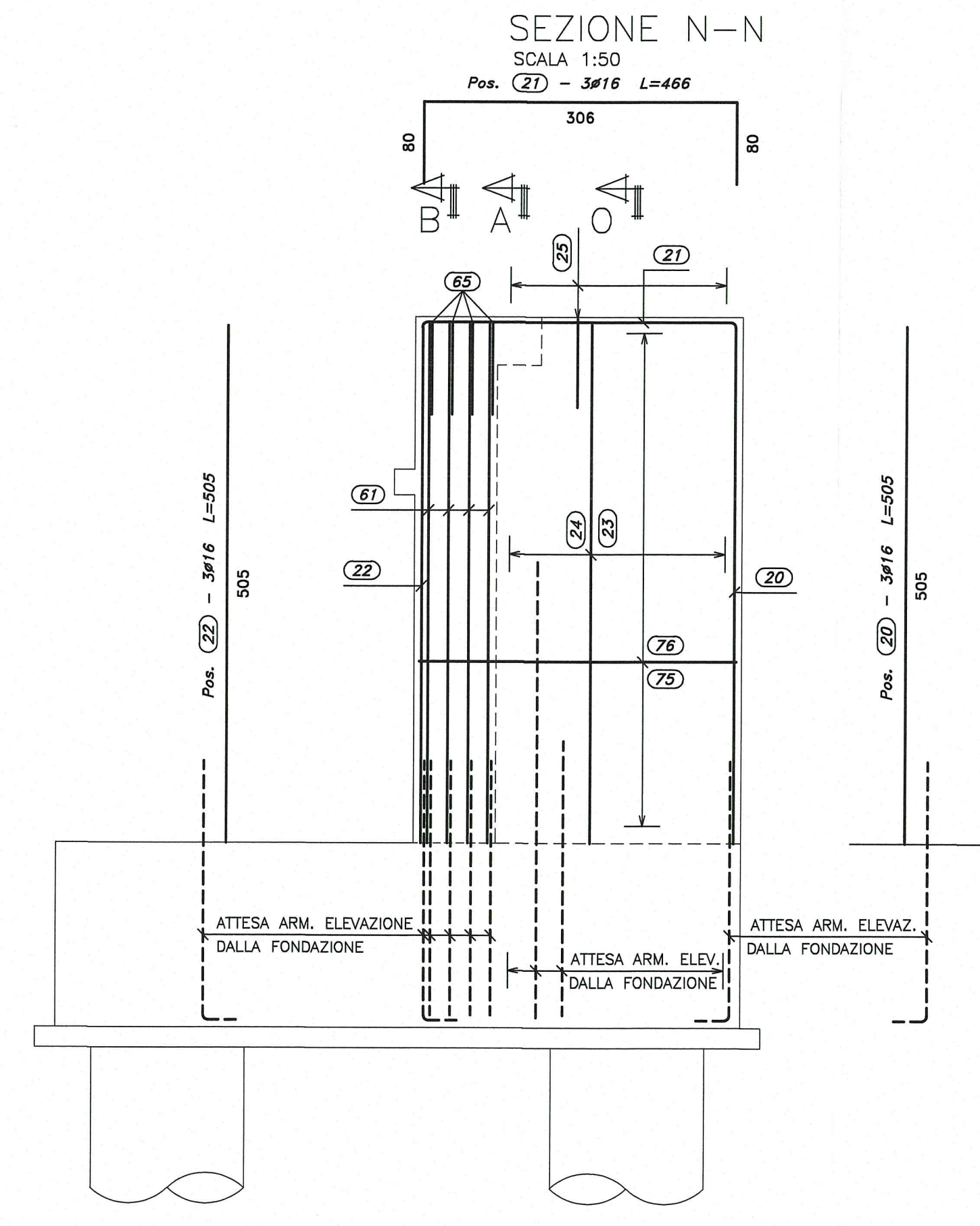
SEZIONE M-M  
SCALA 1:50



SEZIONE O-O  
SCALA 1:50



SEZIONE N-N  
SCALA 1:50



DOCUMENTI DI RIFERIMENTO	
DESCRIZIONE	CODIFICA
CARATTERISTICHE DEI MATERIALI E SPECIFICHE TECNICHE	RAAA1EVAPPV01GSP001.dwg

Autocamionale della CISA S.p.A.

PROGETTO ESECUTIVO

Autocamionale della CISA S.p.A.

IMPRESA PIZZAROTTI & C. S.p.A.

PROGETTAZIONE DI: idressee engineering

CONSALENZA SPECIALISTICA A CURA DI: NA

TITOLO ELABORATO: Asse principale Ponti e viadotti Viadotto V1 sul torrente Recchio Elevazioni - Spalla A Carreggiata Sud - Armatura - Tav. 1/2

DATA EMISSIONE PROGETTO: 18/03/2014

SCALE: varie

REVISIONI:

NO. DESCRIZIONE	DATA	REVISIONE
1	13/06/2014	REMISSIONE PROGETTO ESECUTIVO