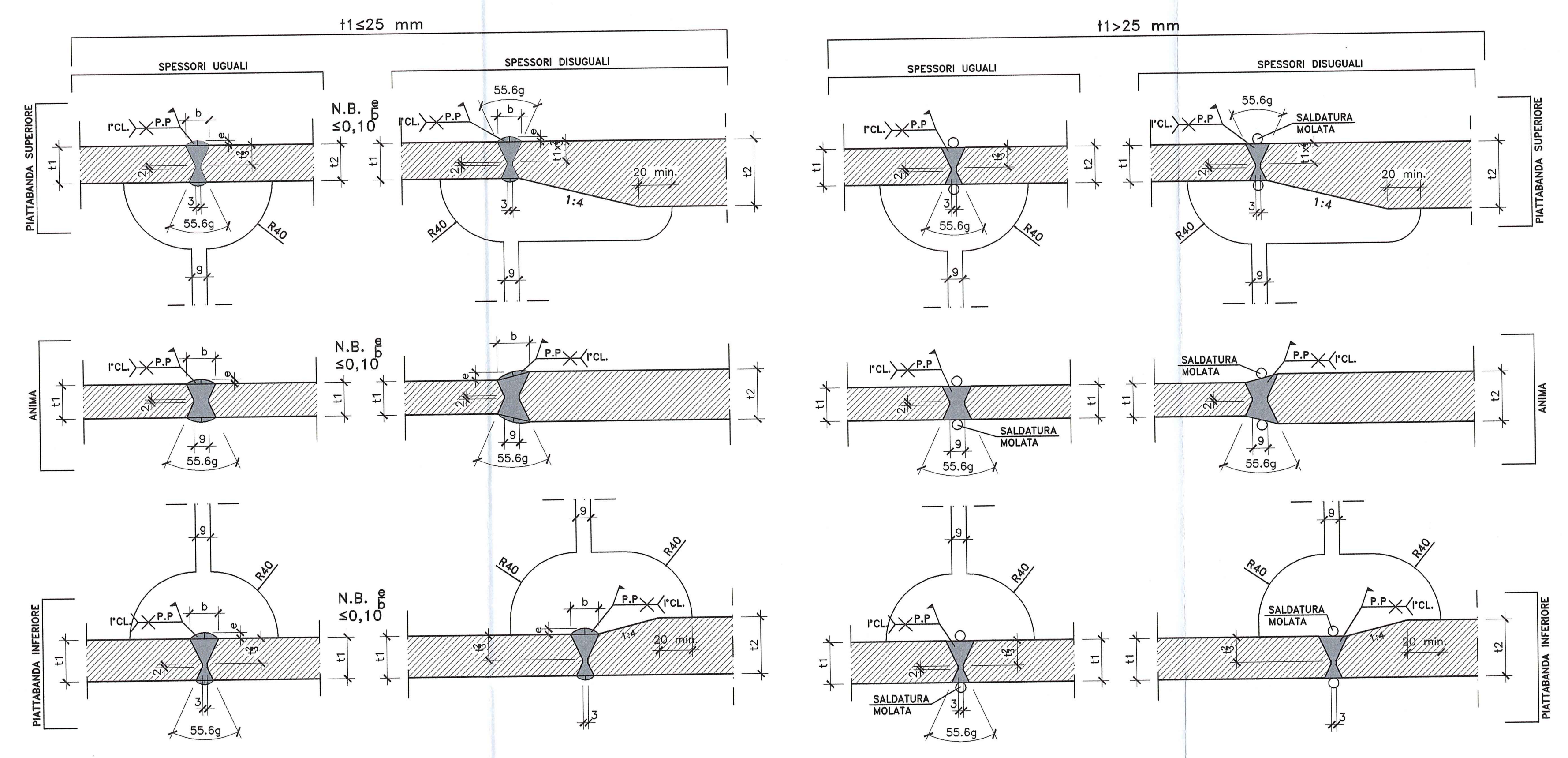
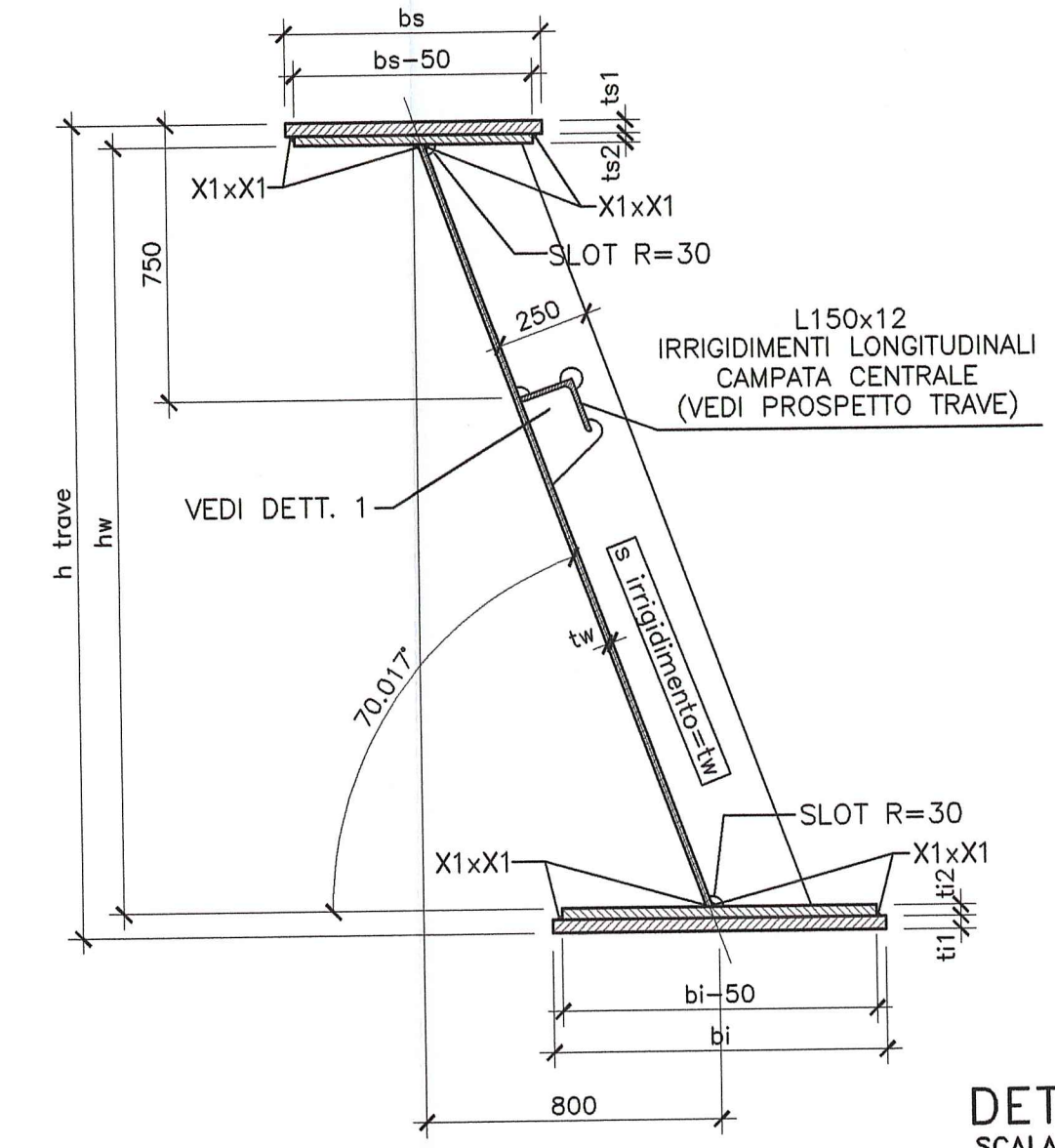


DETTAGLIO SALDATURE CONCI TRAVI -COMPLETA PENETRAZIONE-
SCALA 1:2

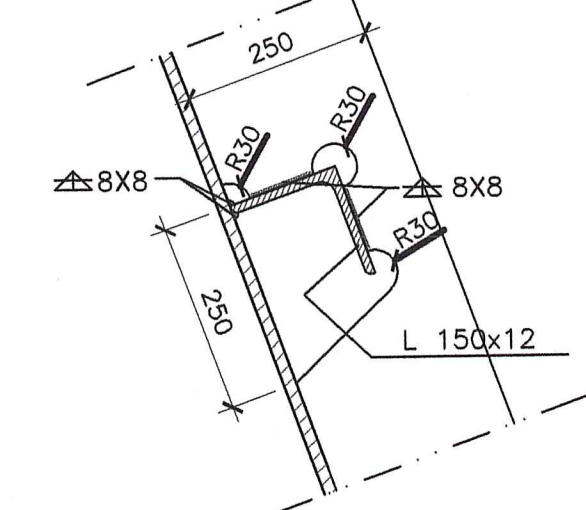


SEZIONE TRAVE

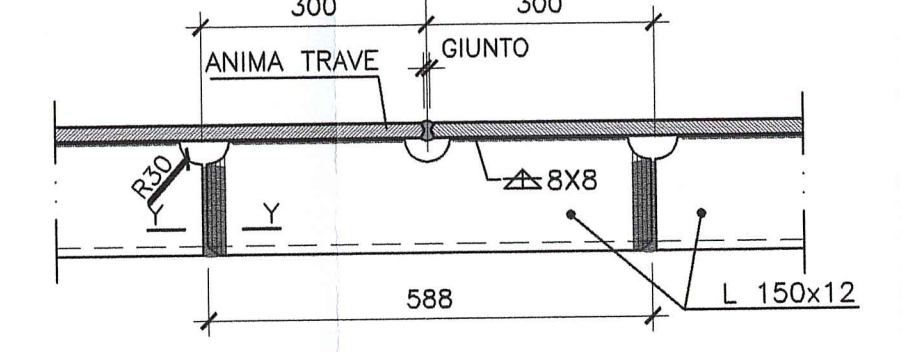


CONCIO TIPO	h trave (mm)	bs (mm)	spessore piatti diottobordo sup.		bi (mm)	spessore piatti diottobordo inf.		tw (mm)	X1 (mm)
			ts1 (mm)	ts2 (mm)		t1 (mm)	t2 (mm)		
1	2200	600	18	-	900	30	-	16	10
2	2200	600	18	-	900	30	-	18	11
3	2200	700	35	-	900	35	-	22	13
3.1	2200	700	35	25	900	35	25	22	13
4	2200	600	18	-	900	30	-	18	11
5	2200	600	18	-	900	30	-	16	10
6	2200	600	18	-	900	30	-	18	11
7	2200	700	35	-	900	35	-	22	13
7.1	2200	700	35	25	900	35	25	22	13
8	2200	600	18	-	900	30	-	18	11
9	2200	600	18	-	900	30	-	16	10

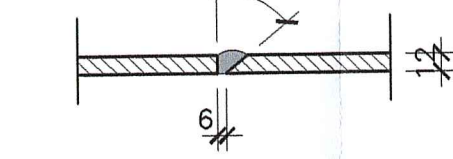
DETTAGLIO 1
SCALA 1:10



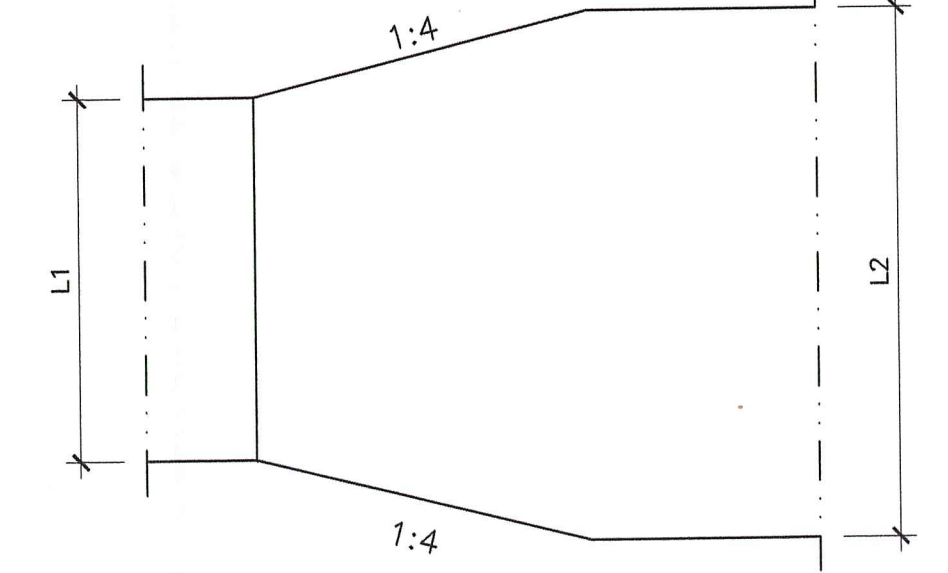
DETTAGLIO SALDATURA IRRIGIDIMENTO LONGITUDINALE -1-
SCALA 1:10



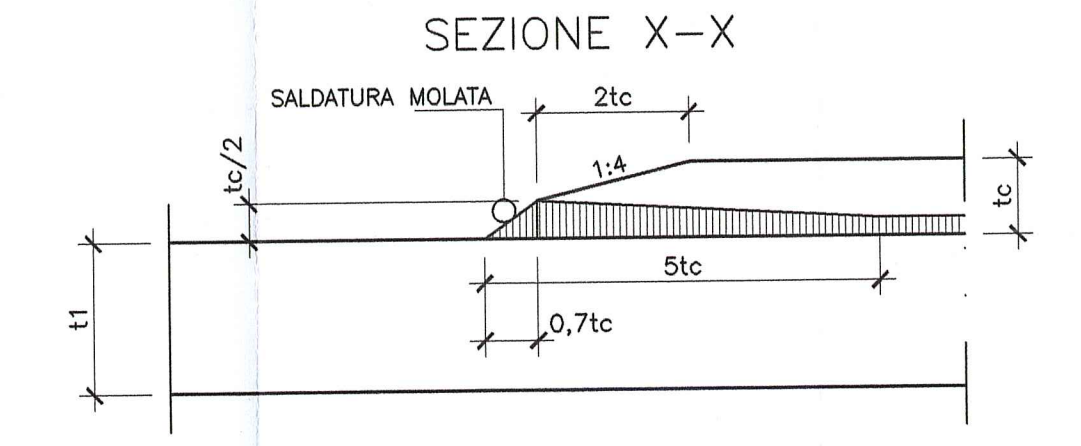
SEZIONE Y-Y
SCALA 1:5



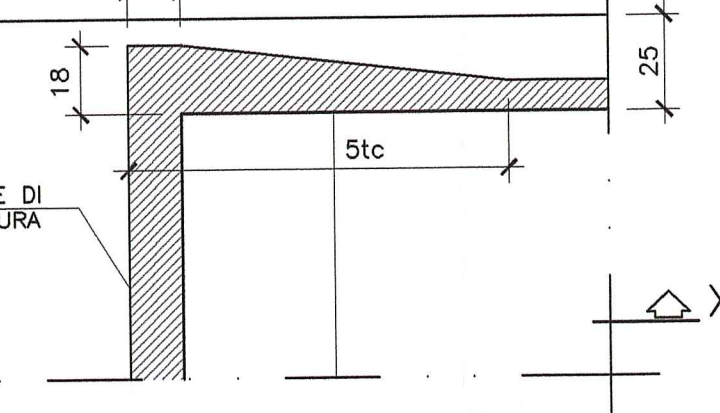
PARTICOLARE ALLARGAMENTO PIATTABANDE
SCALA 1:10



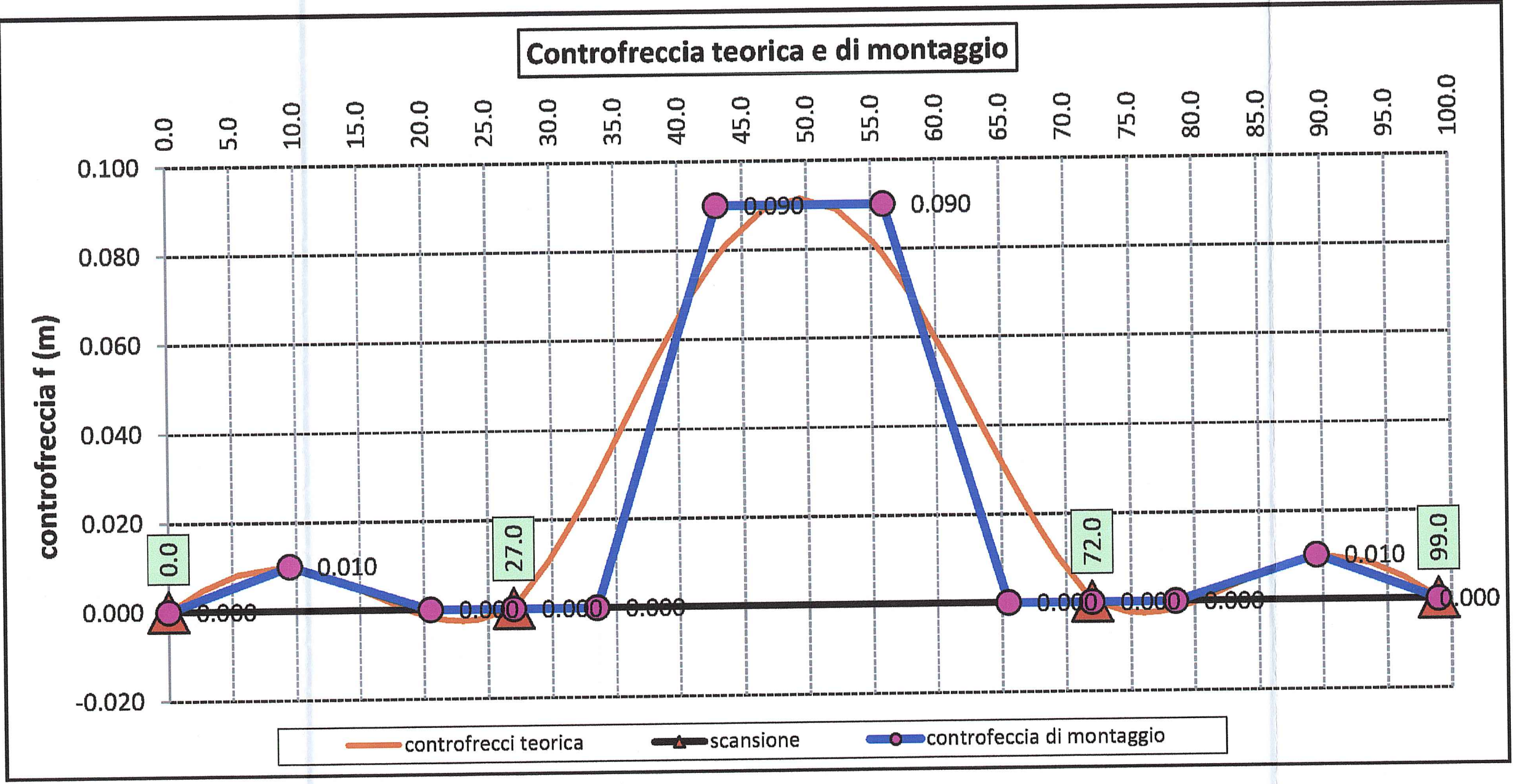
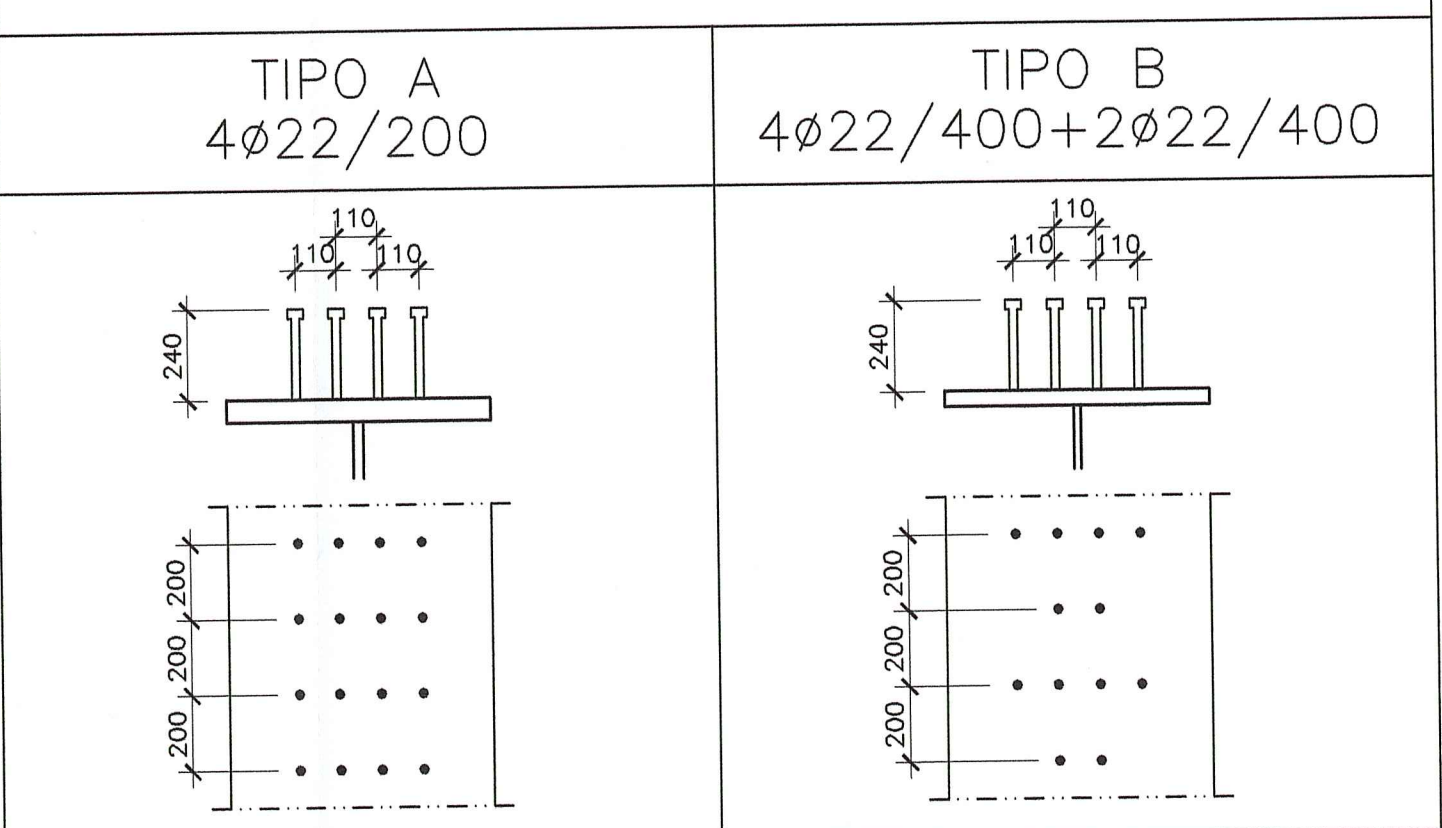
PARTICOLARE TERMINAZIONE IMPILAGGIO (TI)
SEZIONE X-X



PIANTA



PIOLATURA TIPO TRAVI PRINCIPALI scala 1:20



Autocomonale della CISA S.p.A.
Via Combaora 26/A - Frazione Ponte Taro - 43015 NOCETO (PR)

Impresa Esecutrice: PIZZAROTTI FONDATA NEL 1910

PROGETTO ESECUTIVO

Autostada della CISA A15
RACCORDO AUTOSTRADALE A15/A22
CORRIDOIO PLURIMODALE TIRRENO-BRENNERO
RACCORDO AUTOSTRADALE FRA L'AUTOSTRADA DELLA CISA-FONTEVIVO (PR)
E L'AUTOSTRADA DEL BRENNERO-NOGAROLE ROCCA (VR) - 1 LOTTO.

PROGETTO ESECUTIVO

Asse principale
Cavalcavia
Cavalcavia P5A su Cispadana
Carpenteria metallica - Travi principali

18/03/2014