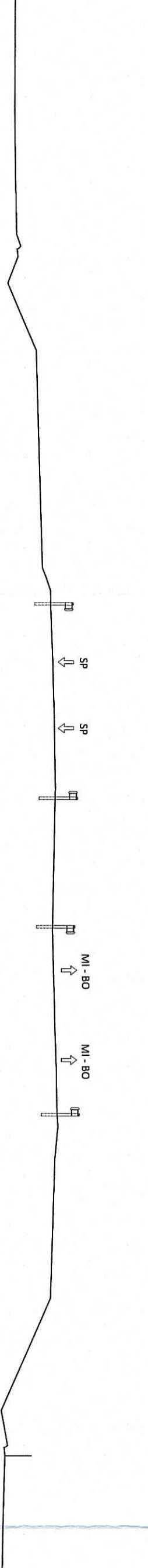
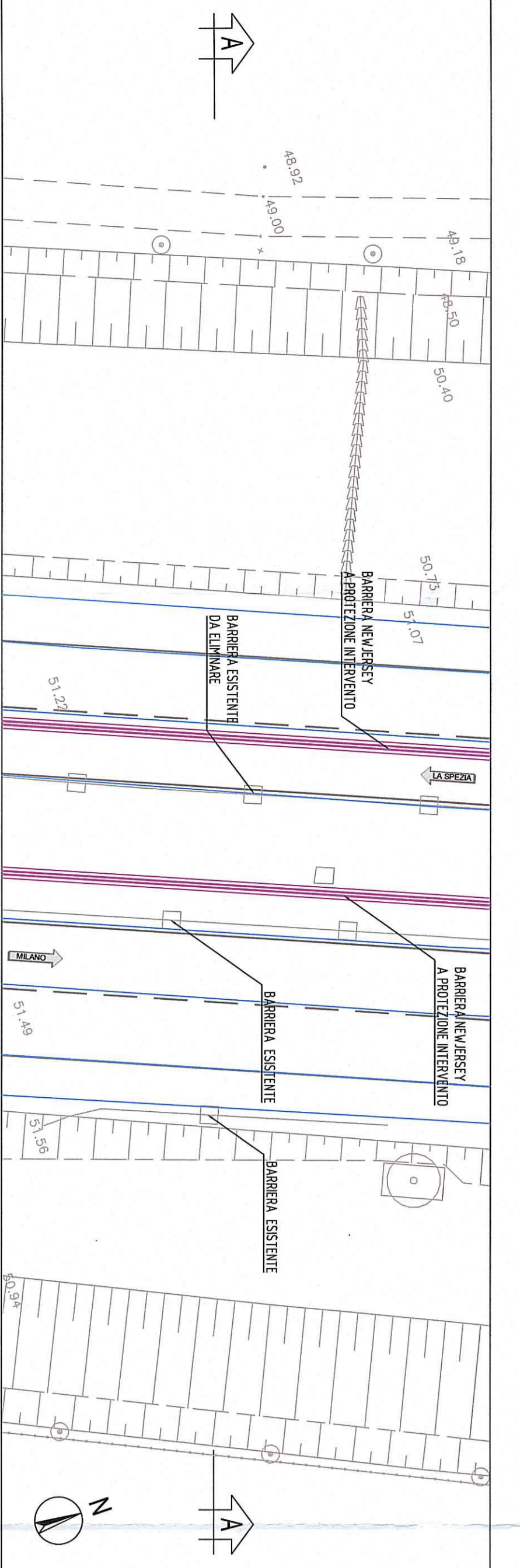


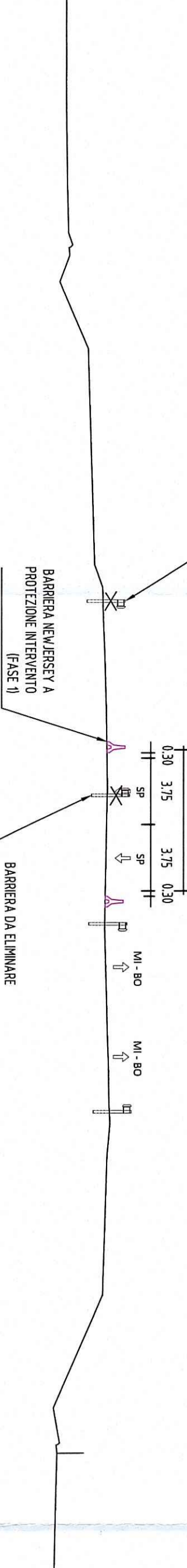
SEZIONE A-A
SCALA 1:250



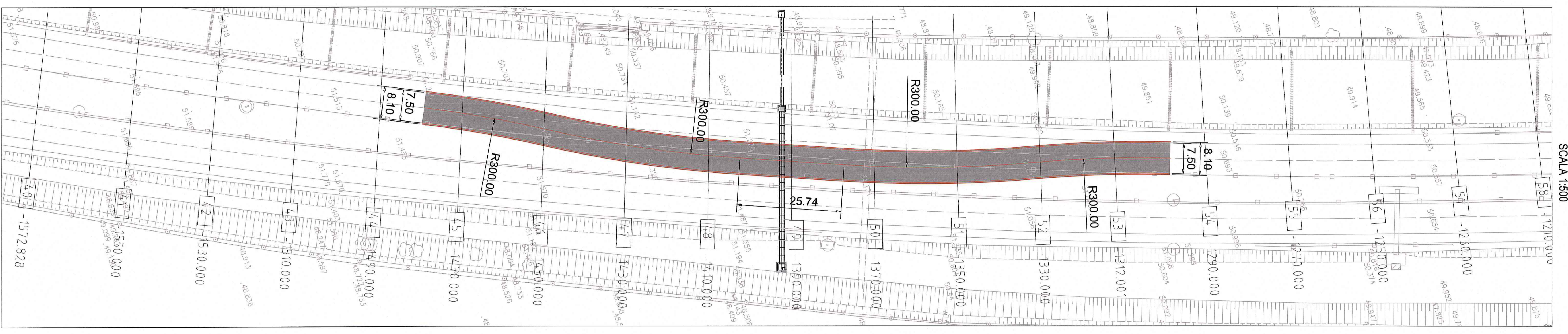
FASE 1
PLANIMETRIA
SCALA 1:250



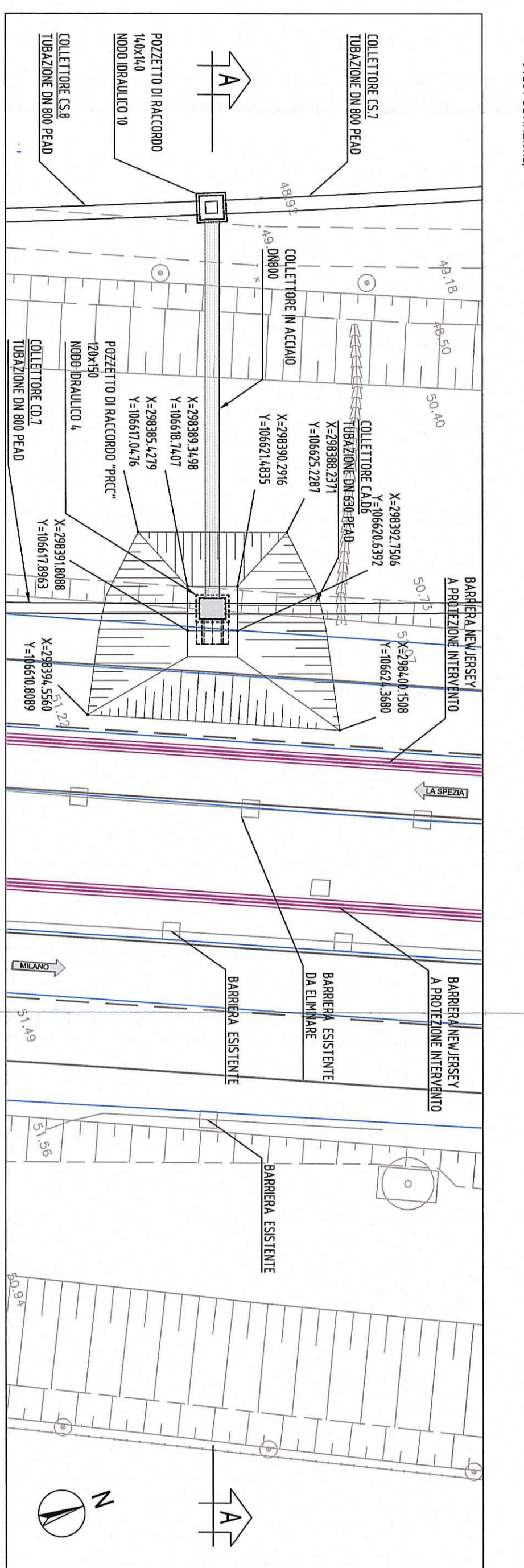
SEZIONE A-A
SCALA 1:250



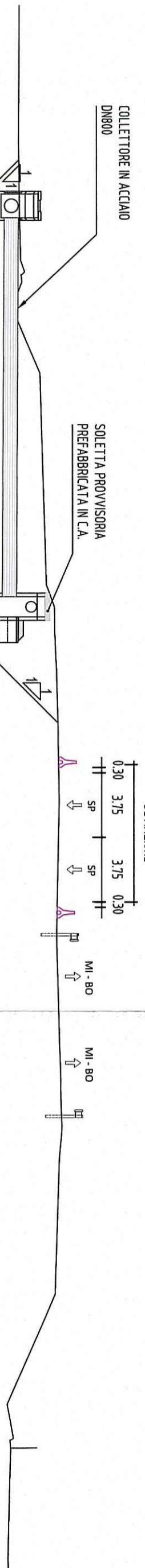
FASE 1:
DEVIAZIONE STRADALE
SCALA 1:500



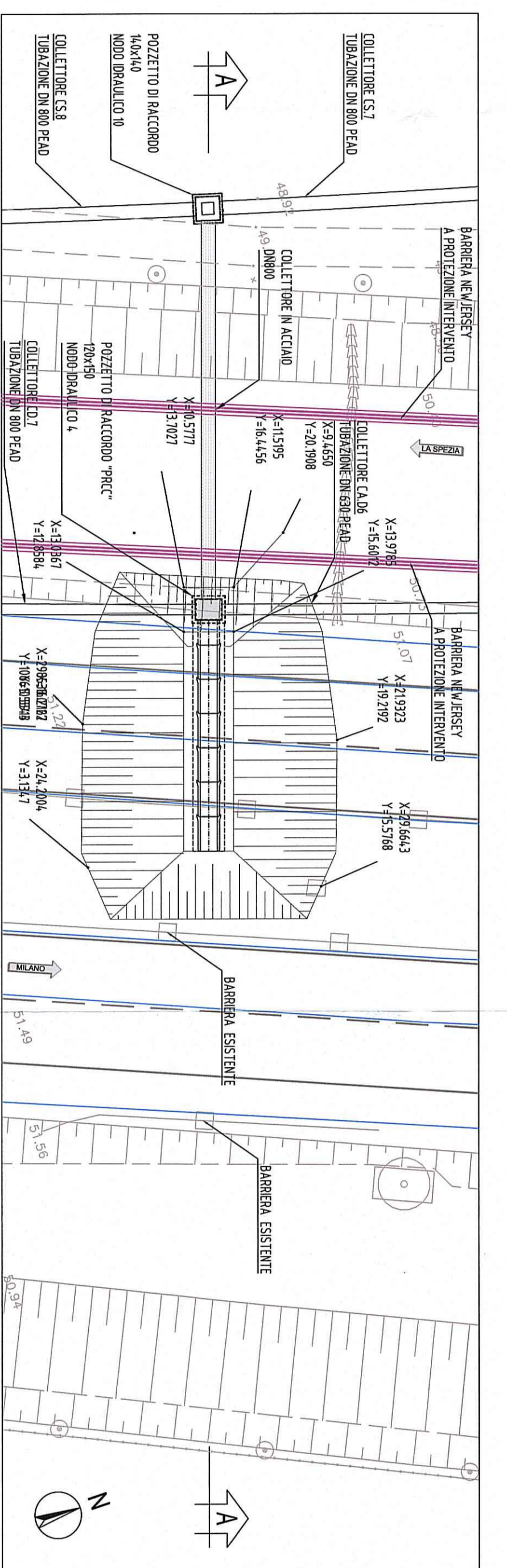
FASE 2
PLANIMETRIA
SCALA 1:250



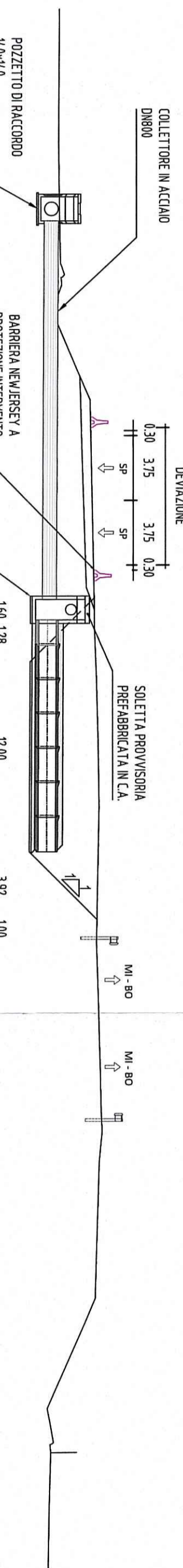
SEZIONE A-A
SCALA 1:250



FASE 3
PLANIMETRIA
SCALA 1:250



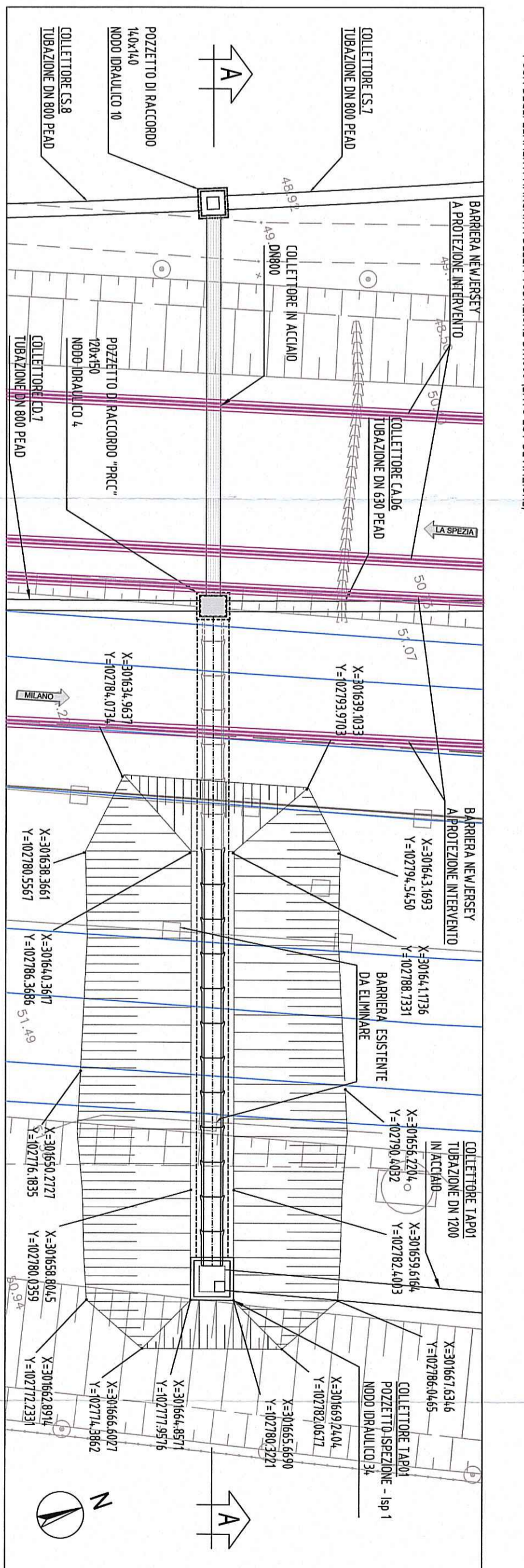
SEZIONE A-A
SCALA 1:250



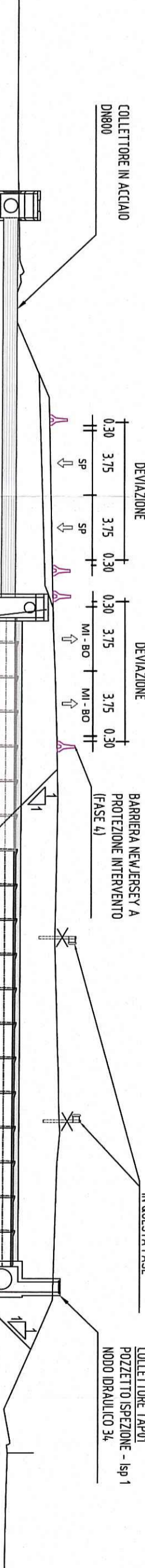
FASE 3:
DEVIAZIONE STRADALE
SCALA 1:500



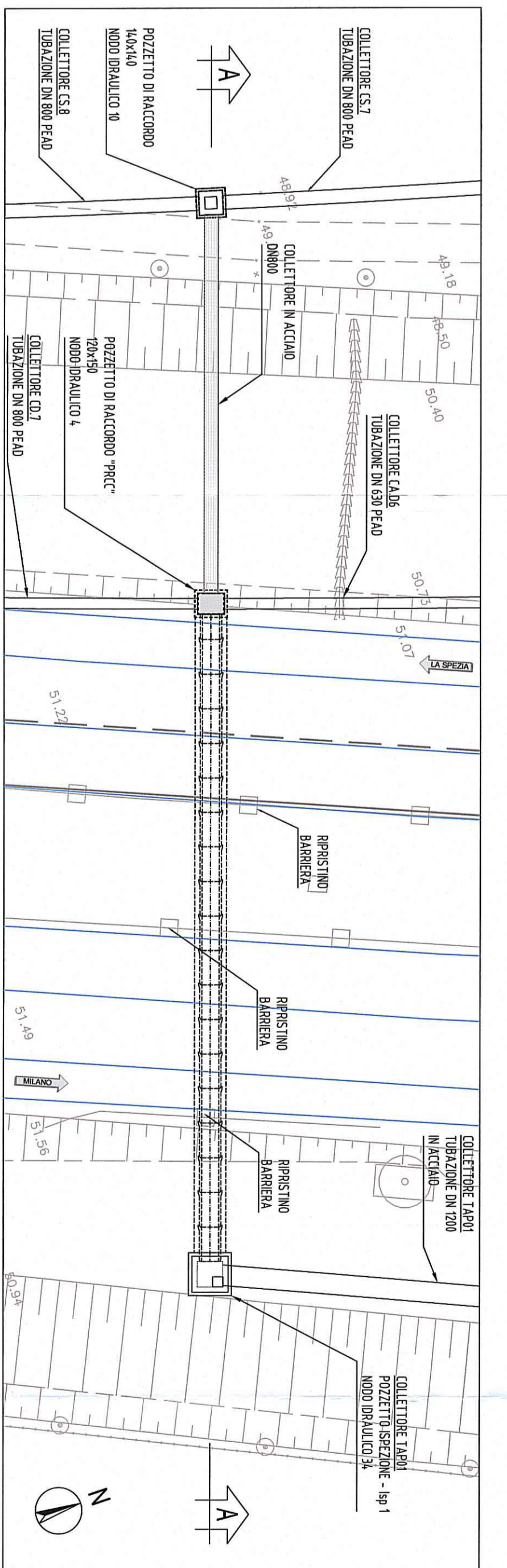
FASE 4
PLANIMETRIA
SCALA 1:250



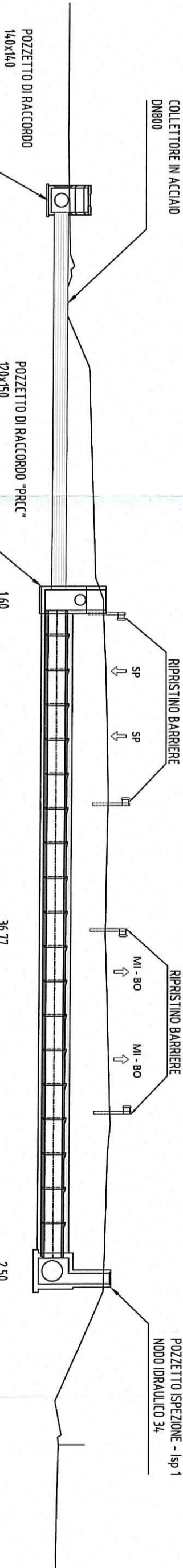
SEZIONE A-A
SCALA 1:250



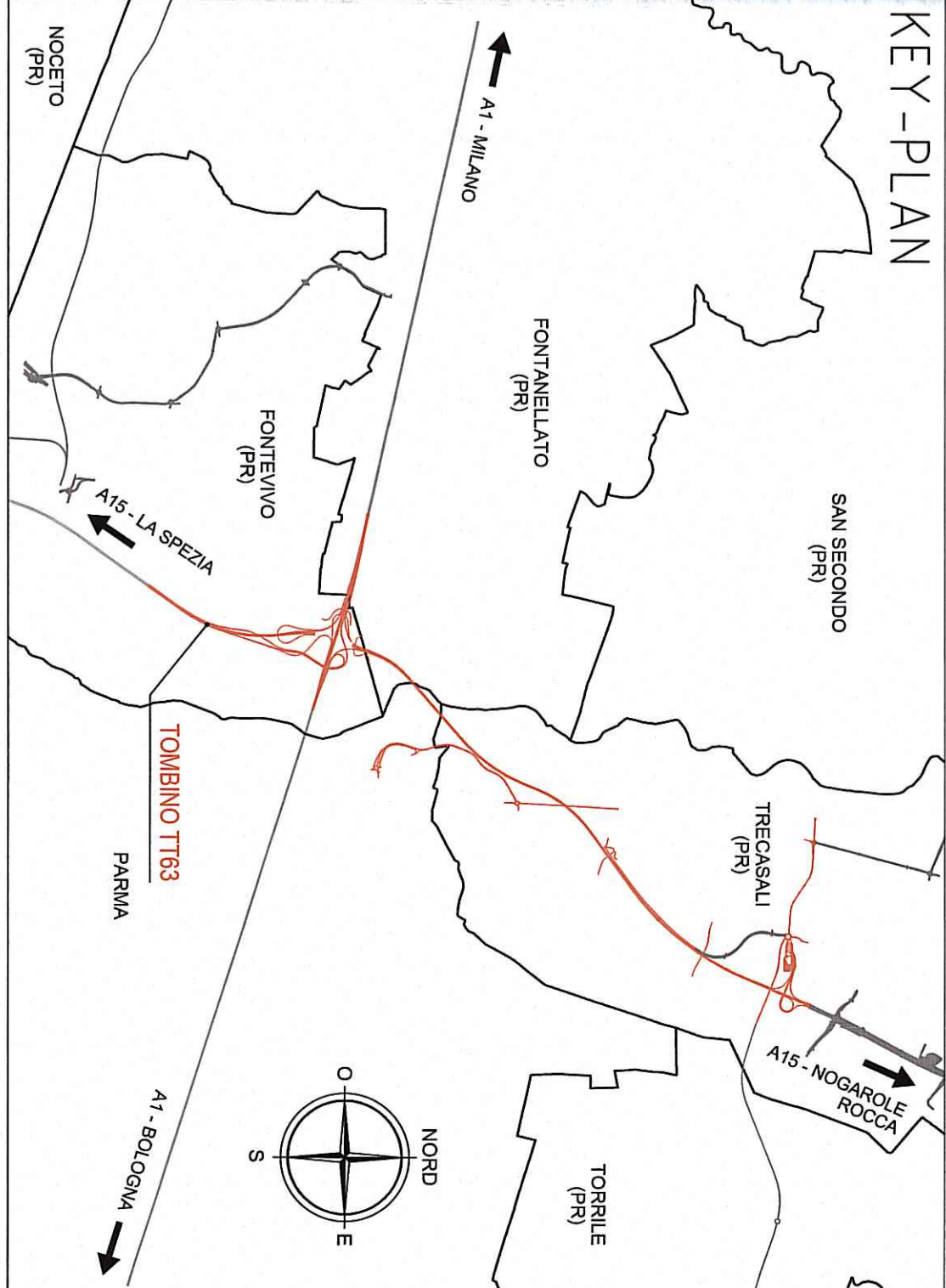
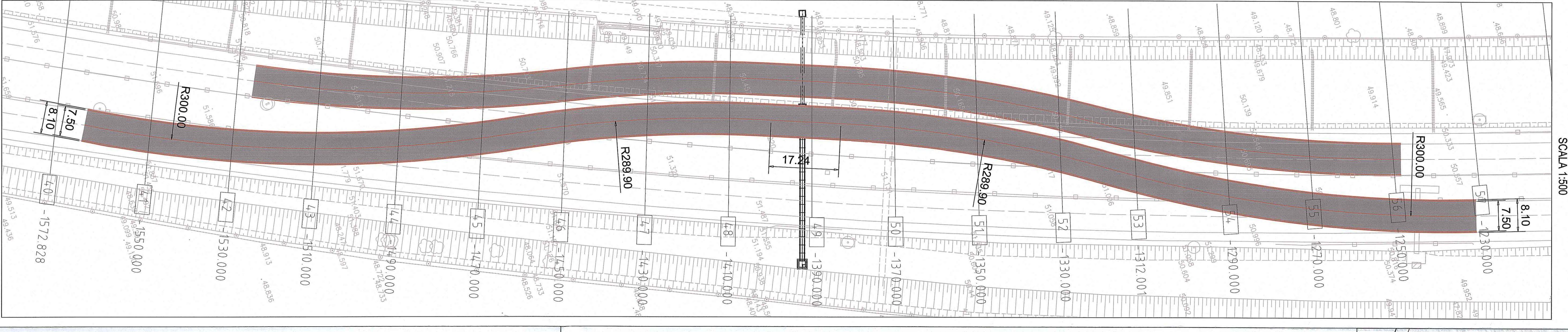
FASE 5
PLANIMETRIA
SCALA 1:250



SEZIONE A-A
SCALA 1:250



FASE 4:
DEVIAZIONE STRADALE
SCALA 1:500



Autocomitale della CISA S.p.A.
Via Comboni 2/A - Tommaso Pavia - 43015 Nocera F.P.

Pizzarotti
ACCORDO AUTOSTIPENDIATO A/S/A/2
CONCORDATO PER LA AUTOSTIPENDIATA DELLA CISA S.p.A.
E L'AUTOSTIPENDIATA DEL BARRONE ROCCOLE ROCCIA (VI) - LOTTO 1
PROGETTO ESECUTIVO

Pizzarotti
Via S. Felice 10
43015 Nocera F.P.

Assa Pincolare
Tommaso di via 100 m - prof. +1491170

idrosere
Via S. Felice 10
43015 Nocera F.P.

REX-SER
Via S. Felice 10
43015 Nocera F.P.

Assa Pincolare
Tommaso di via 100 m - prof. +1491170

Assa Pincolare
Tommaso di via 100 m - prof. +1491170