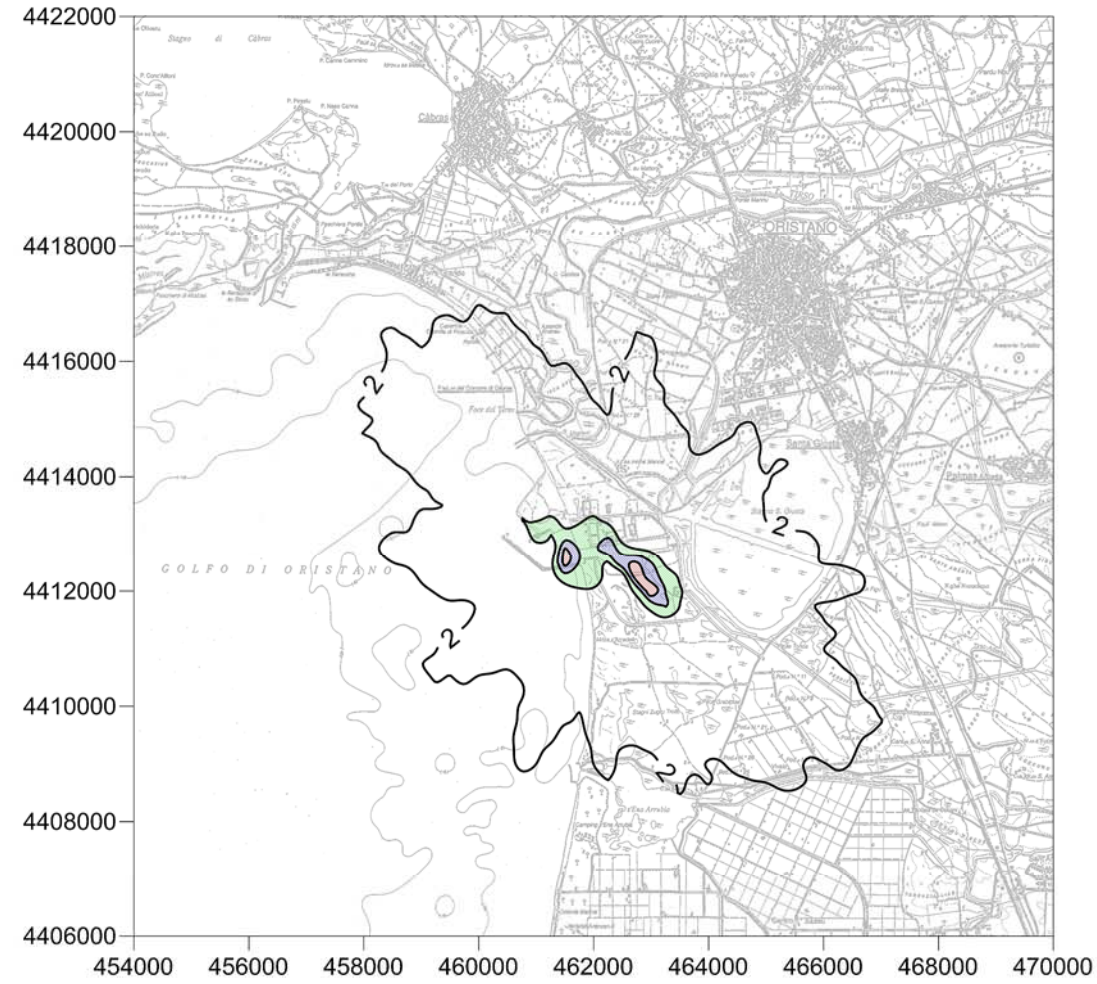
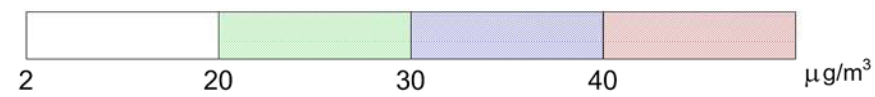


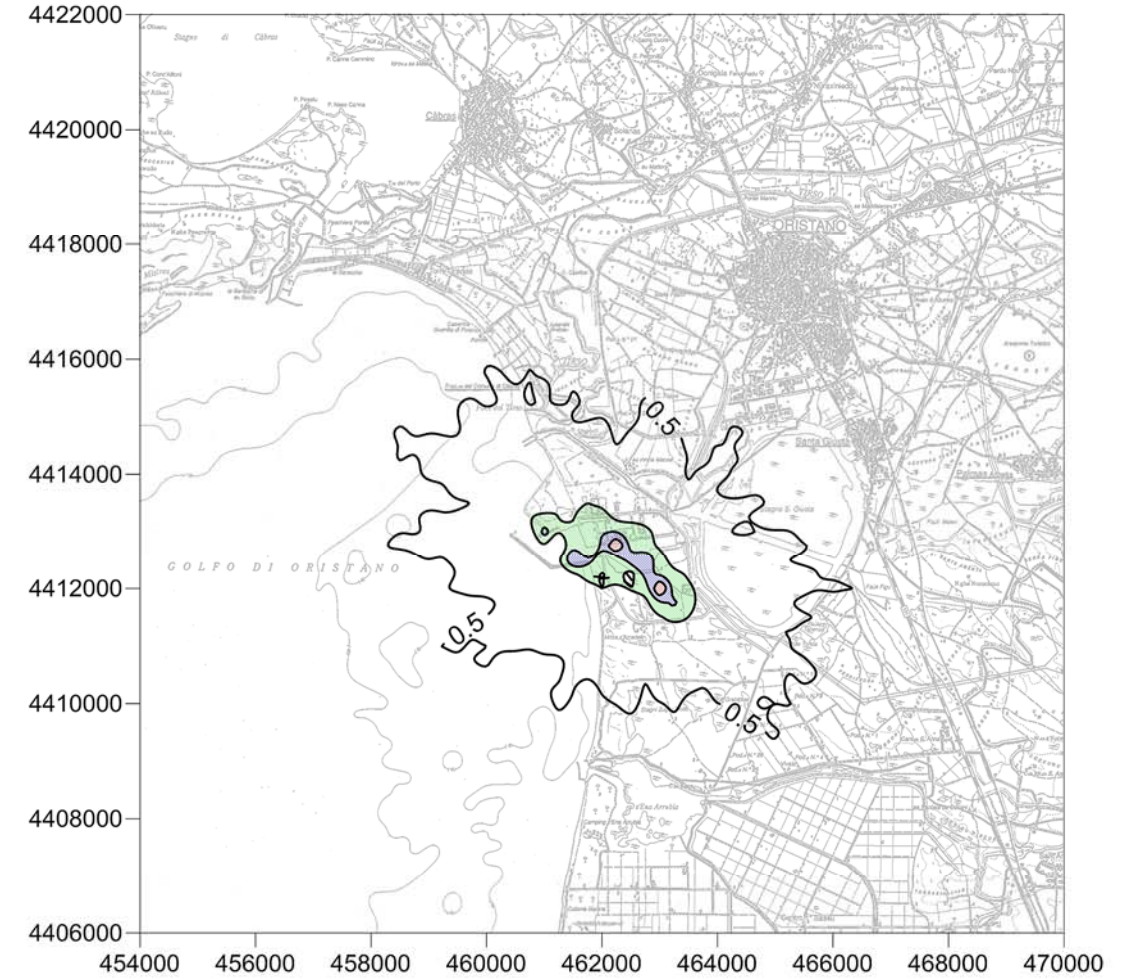
SO2 - MASSIMO ORARIO - 99.7 ° PERCENTILE



LEGENDA



SO2 - MASSIMO GIORNALIERO - 99.2 ° PERCENTILE



LEGENDA

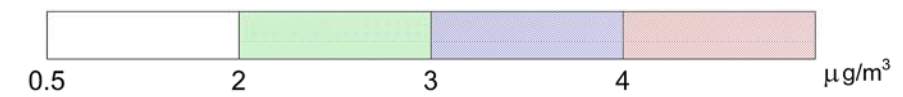


FIGURA 4.2a

ANALISI DI DISPERSIONE DI INQUINANTI IN ATMOSFERA
IN FASE DI ESERCIZIO
MAPPE DELLE ISOCONCENTRAZIONI DI SO2