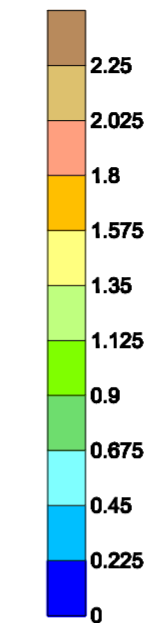


LEGENDA




 SITO

**LIMITE NORMATIVO: 40 ($\mu\text{g}/\text{m}^3$)
(DM 60/2002)**


CONCENTRAZIONI ($\mu\text{g}/\text{m}^3$)



AREE pSIC:

-  pSIC ITB010043
Coste e Isolette a Nord Ovest della Sardegna
-  pSIC ITB010002
Stagno di Pilo e di Casaraccio
-  pSIC ITB010003
Stagno e Ginepreto di Platamona

Revisione	Data Agg.	Motivo dell'Aggiornamento	Dis.	Contr.




 ENVIRON Italy S.r.l.
 an ENVIRON Holding Company

Via Largo, 6
 20122 Milano
 +39 02 86998724 Tel.
 +39 02 89011091 Fax

Via Mentore Maggini, 50
 00143 Roma
 +39 06 4521440 Tel.
 +39 06 45214499 Fax

Progetto: **Integrazioni SIA Centrale di Fiumesanto**

Figura: **9 NO2 Concentrazioni Medie Annue Scenario Futuro 2**

Revisione: 00	Scala: 1:50.000	Cliente: 	
Data: Maggio 2008	Commessa: 83207		
Formato: A2	Layout: 9		Disegnato da: AT