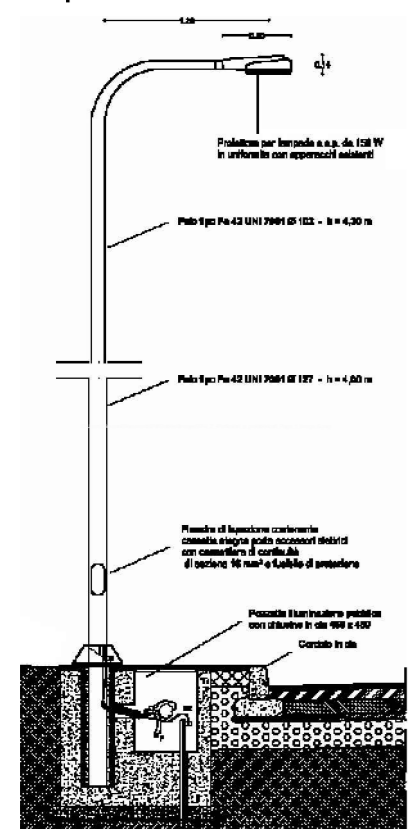
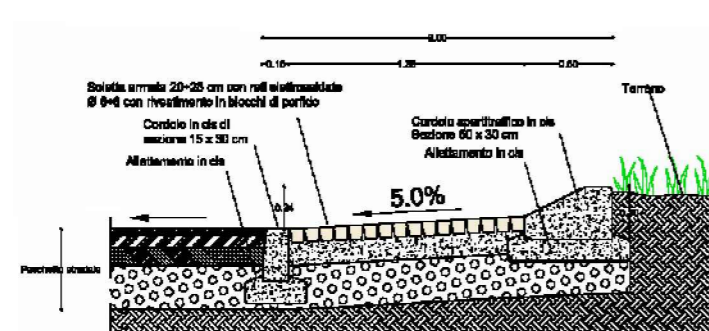


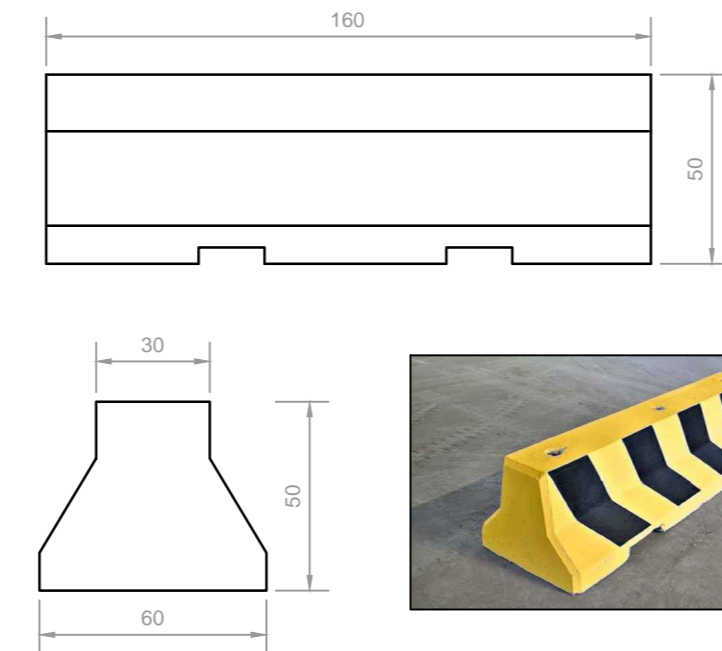
Particolare impianto illuminazione



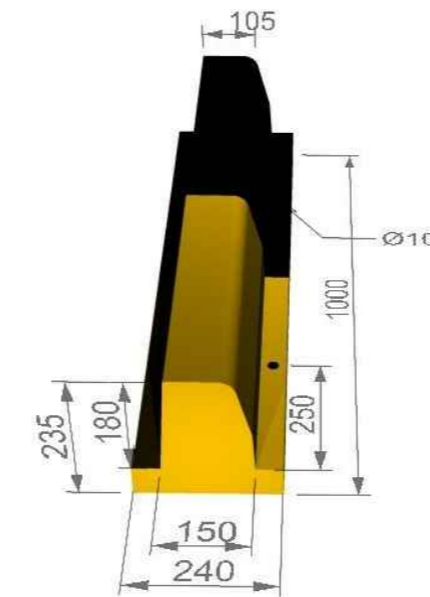
Particolare rotatoria



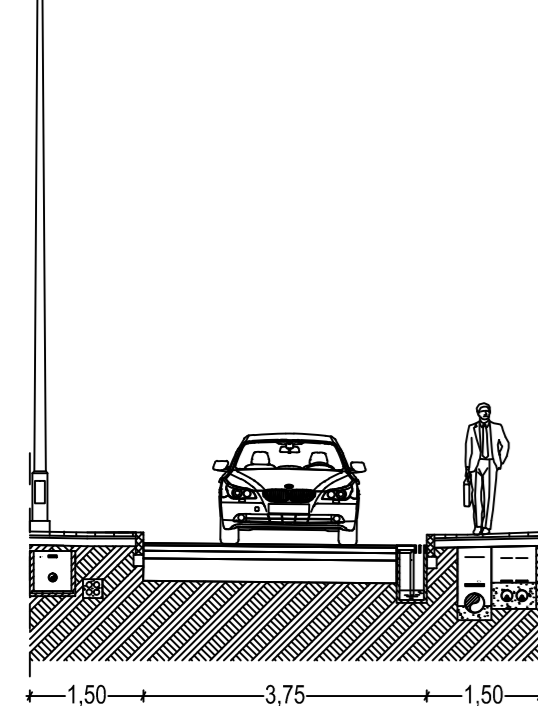
Spartitraffico tipo New Jersey



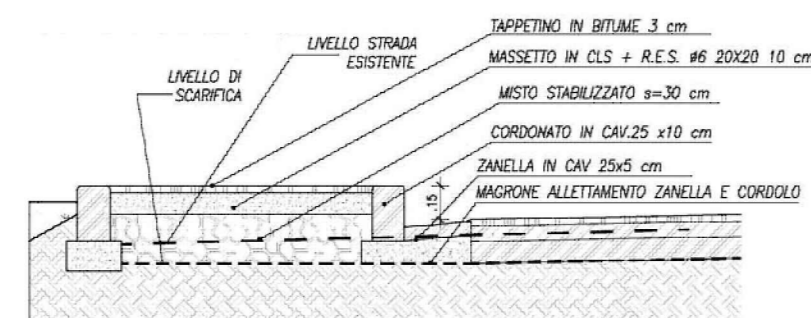
Cordoletto di delimitazione



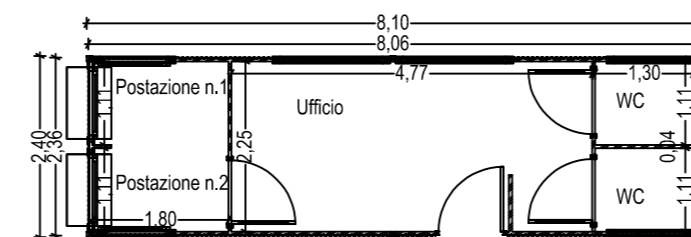
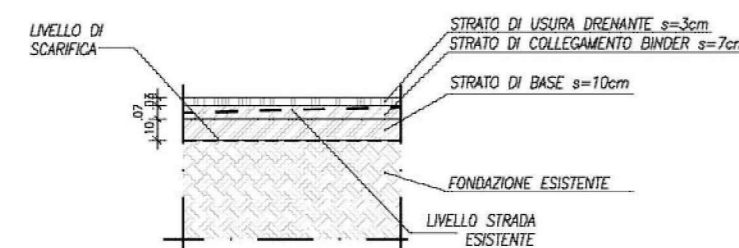
Sezione corsia



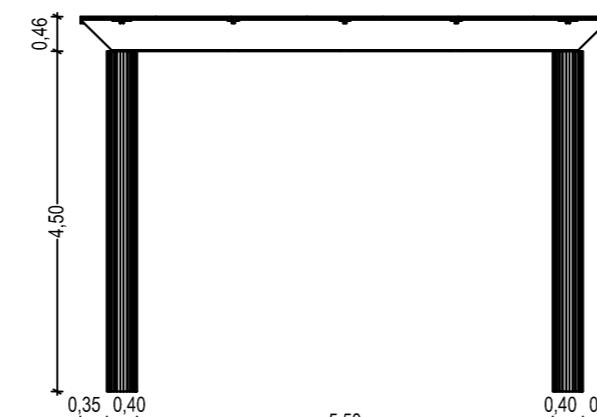
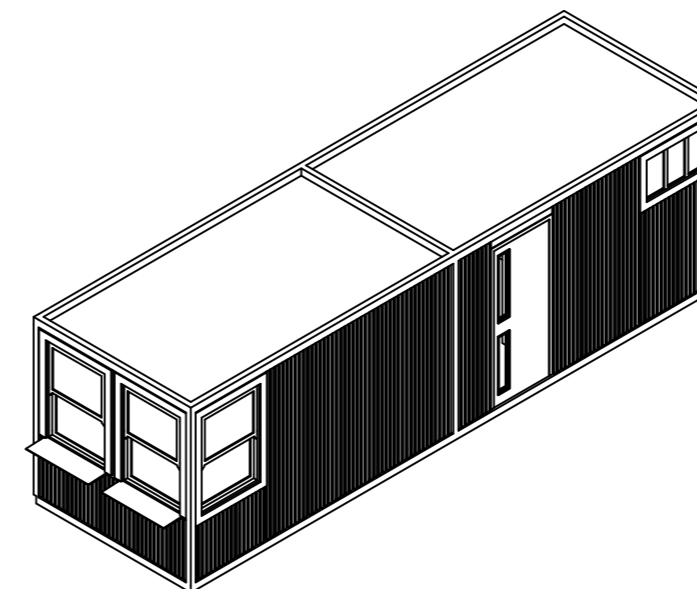
Particolare marciapiede (tratto asfaltato)



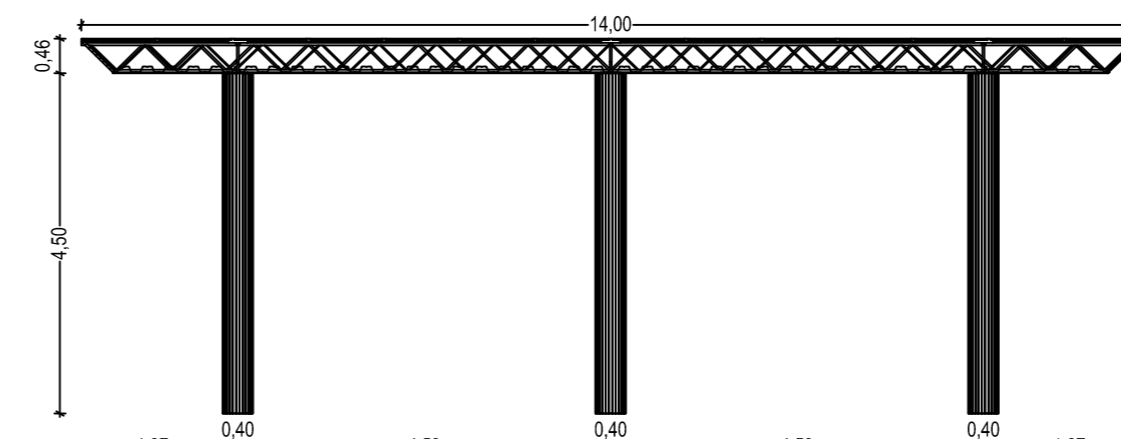
Pacchetto stradale (tratto asfaltato)



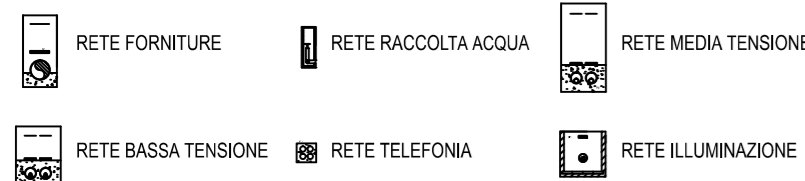
Box prefabbricato - Biglietteria
rapporto 1 : 100



Tettoia prefabbricata - area Biglietteria



Tettoia Bar - ristorante



COMUNE DI REGGIO CALABRIA
CAPITANERIA DI PORTO DI REGGIO CALABRIA

Proponente:

CARONTE & TOURIST S.p.A.



REALIZZAZIONE DI UN SISTEMA DI APPRODO PER IL COLLEGAMENTO
MARITTIMO REGGIO CALABRIA/MESSINA PRESSO LE AREE A NORD DEL
PIAZZALE PORTO IN REGGIO CALABRIA

PROGETTO PRELIMINARE

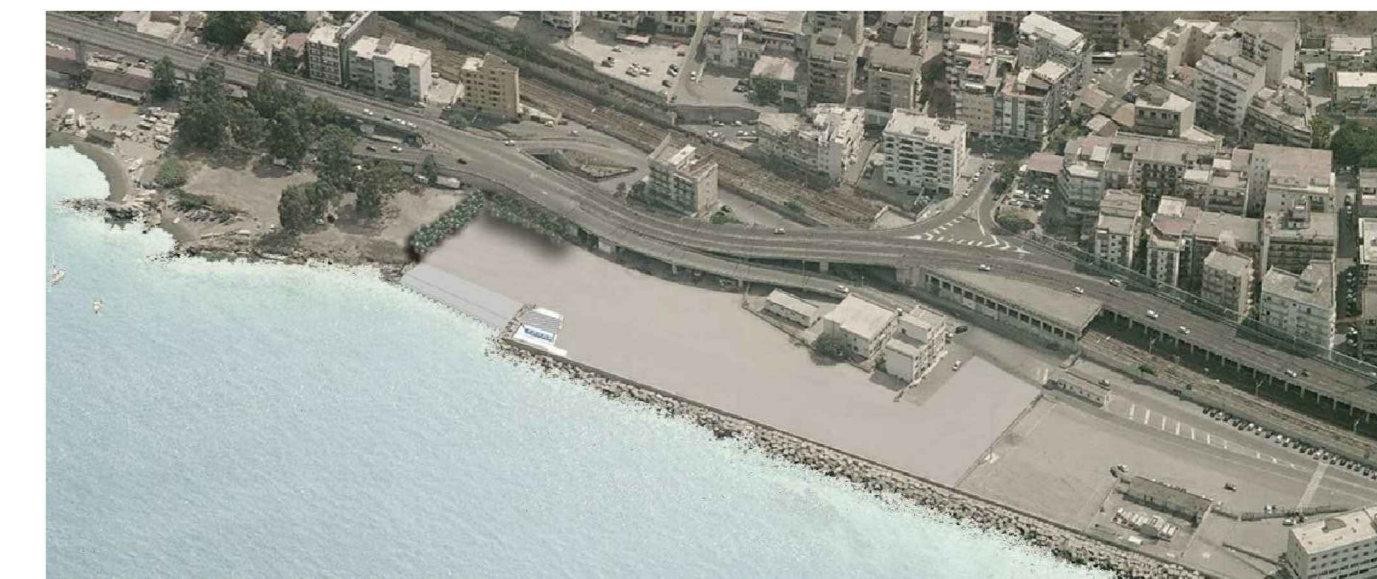
Elaborato

Particolari costruttivi

Scala

Elaborato n.

11



Progettisti

Ing. Giovanni Ferlazzo
Ing. Giovanni Pracanica

Consulente tecnico-scientifico

Prof. Ing. Pasquale Filianoti

Data

Messina 01/02/2013

Coordinatore per la Sicurezza in fase di Progettazione
(D. Lgs. n. 81/2008)

Ing. Alessandro De Domenico

Revisione

Rev 01 04/12/2013

Rev 02 15/05/2015