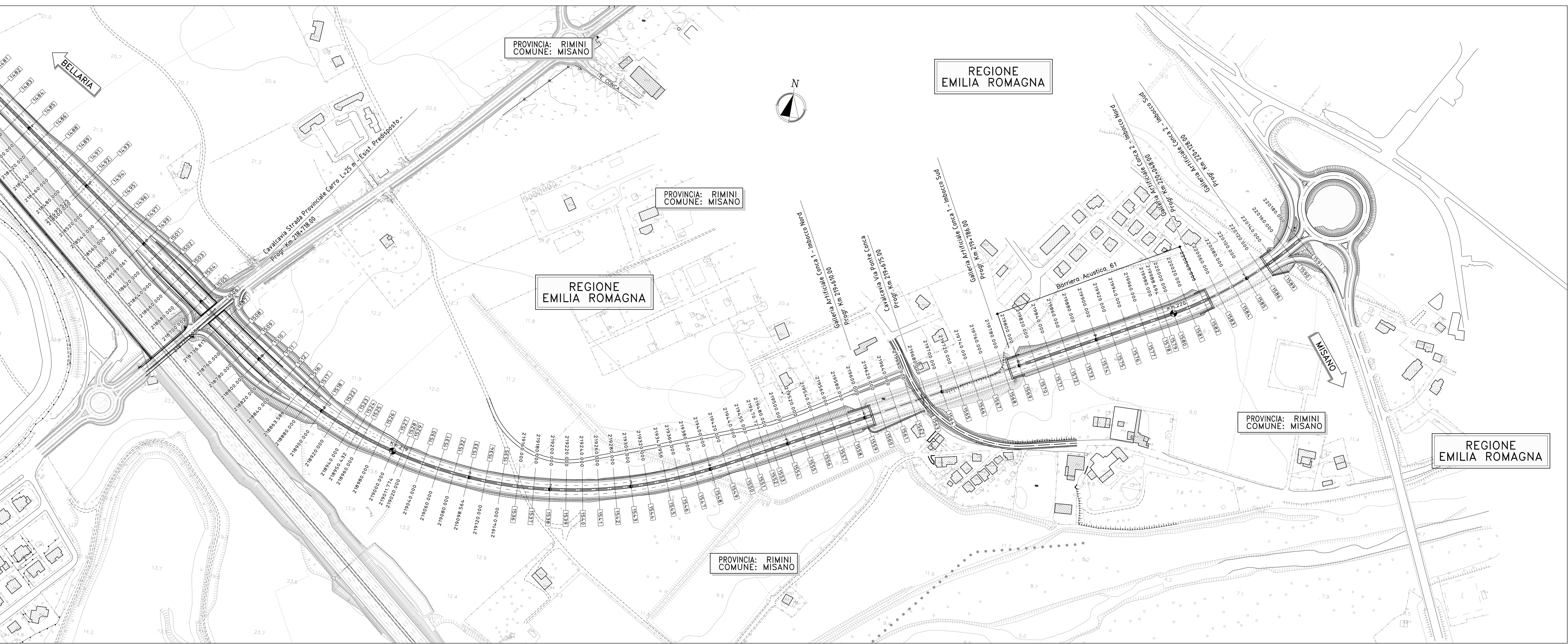
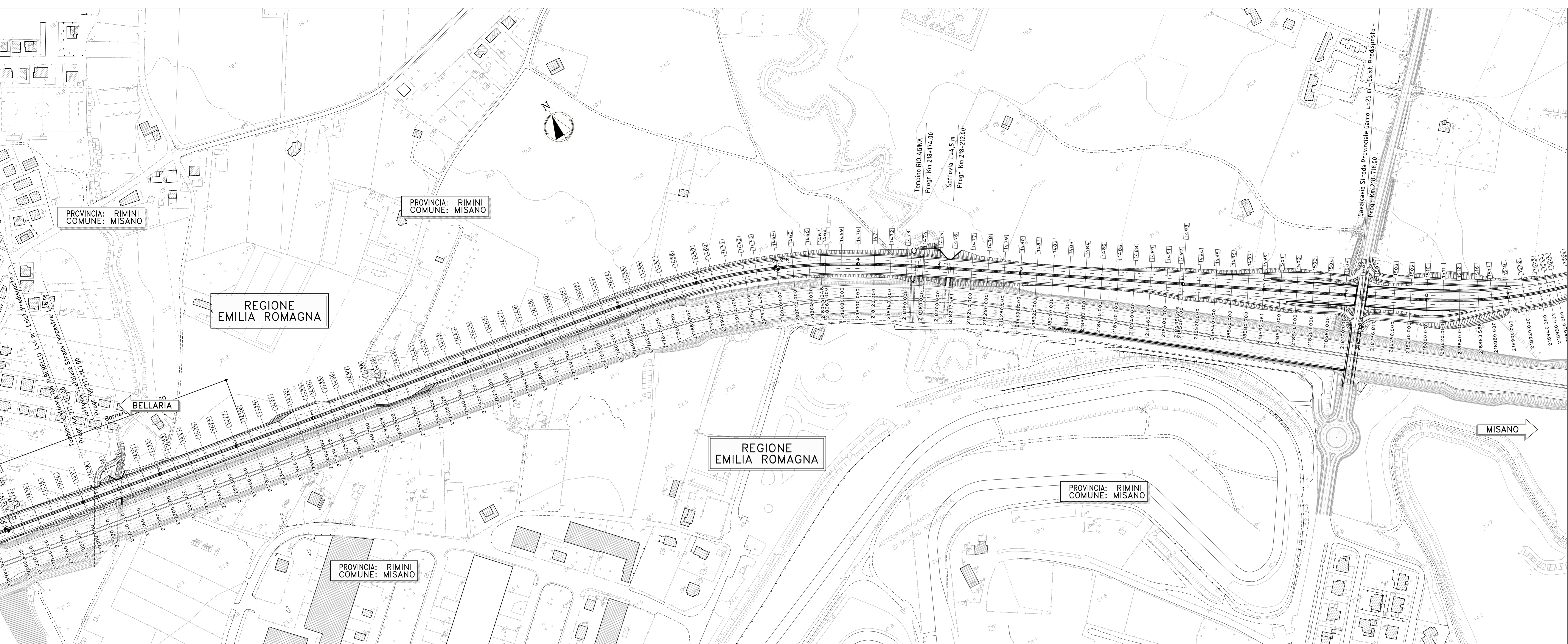
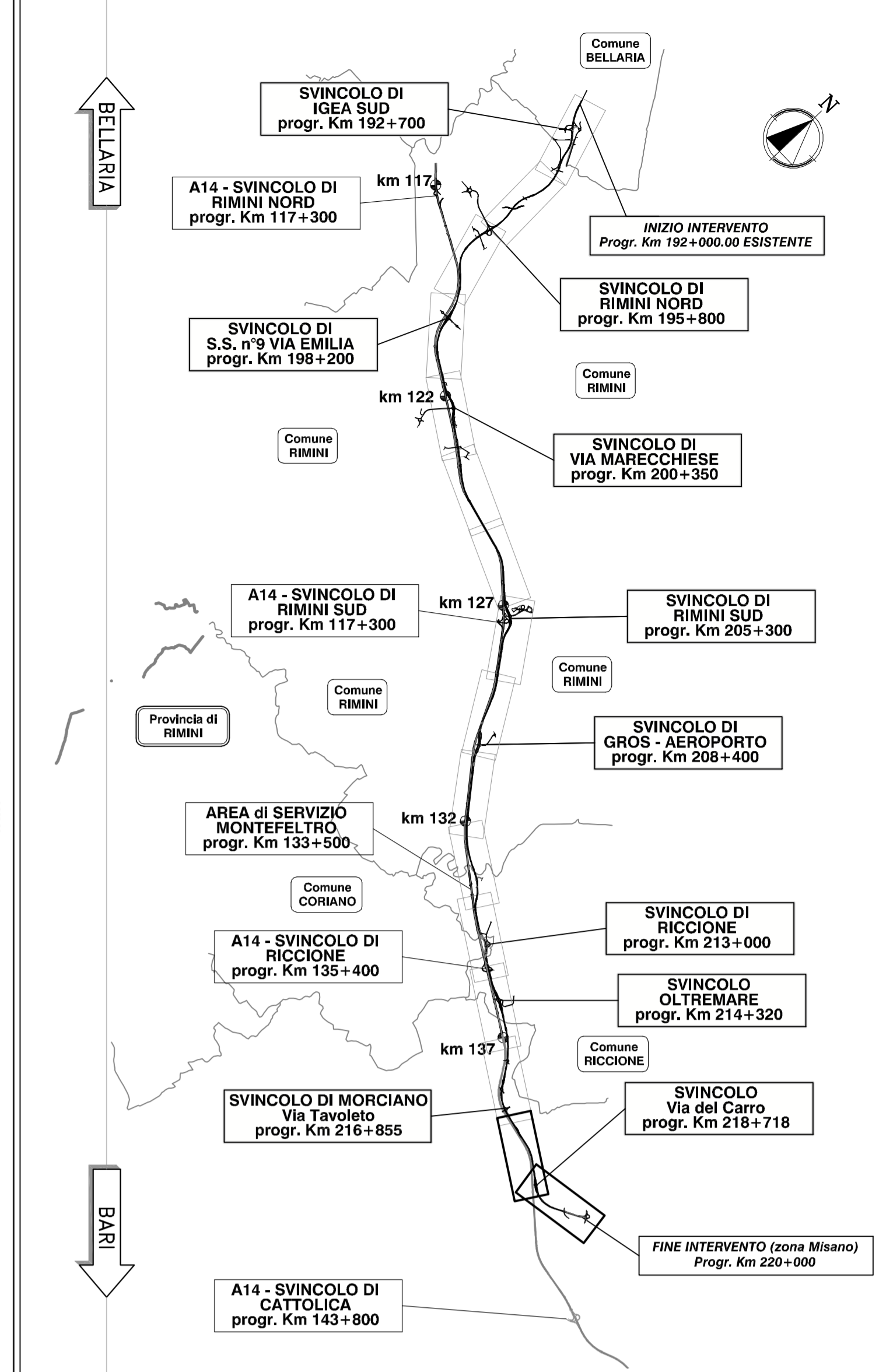


QUADRO DI UNIONE



VARIANTE ALLA S.S. 16 ADRIATICA Bellaria-Rimini-Riccione-Misano tra il Km 193+000 al Km 220+000

PROGETTO DEFINITIVO DG 4/99

PROGETTO STRADALE

PLANIMETRIE DI PROGETTO PLANIMETRIA DI PROGETTO TAVOLA 8

Table listing project partners: spea, STUDIO T.J., SH/ECO, and vdp, along with their respective roles and contact information.

Table with columns for 'RIFERIMENTO ELABORATO', 'DATA', and 'REVISIONE', containing project details like '15003002STD207' and 'MAGGIO 2009'.