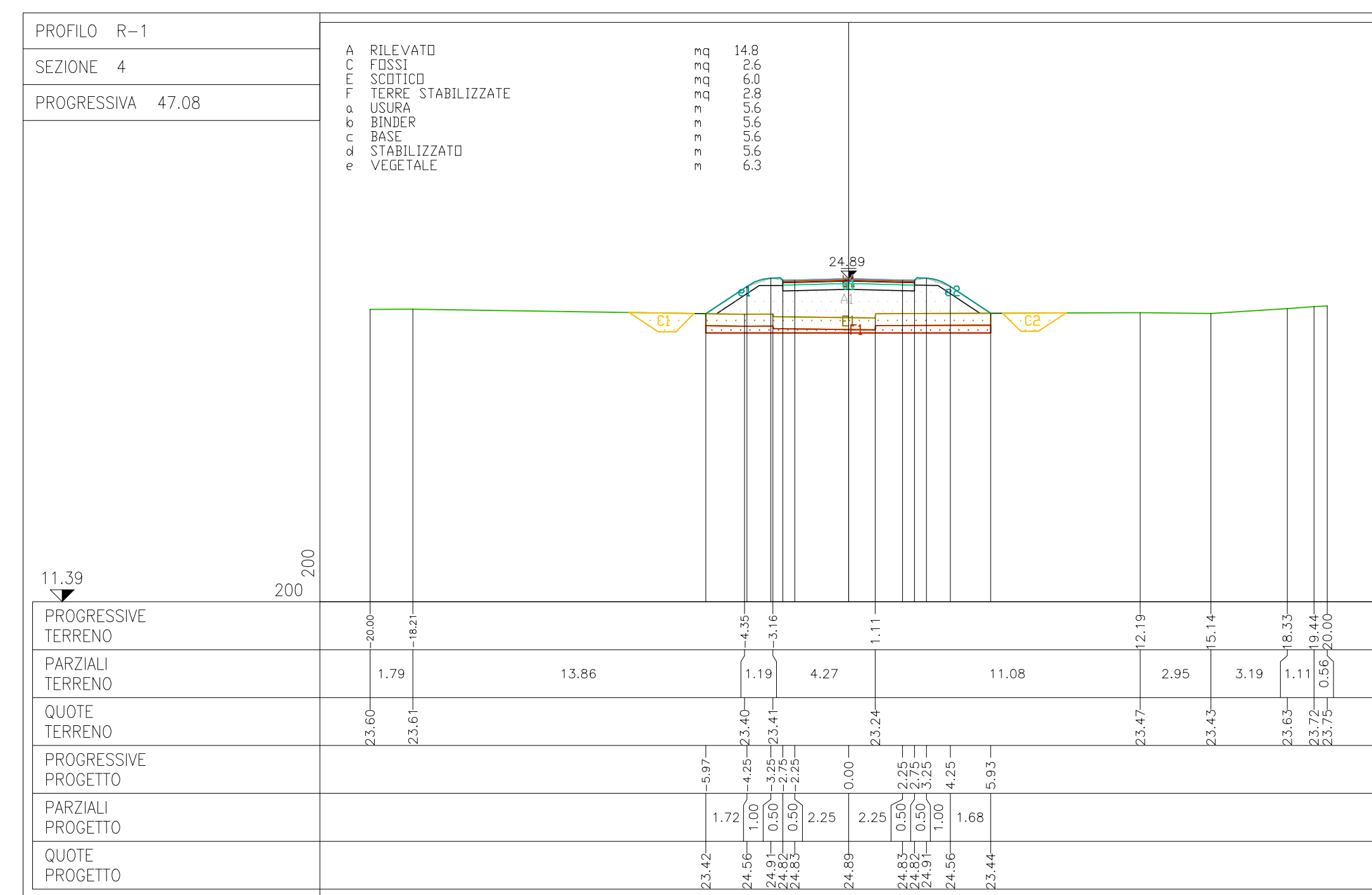
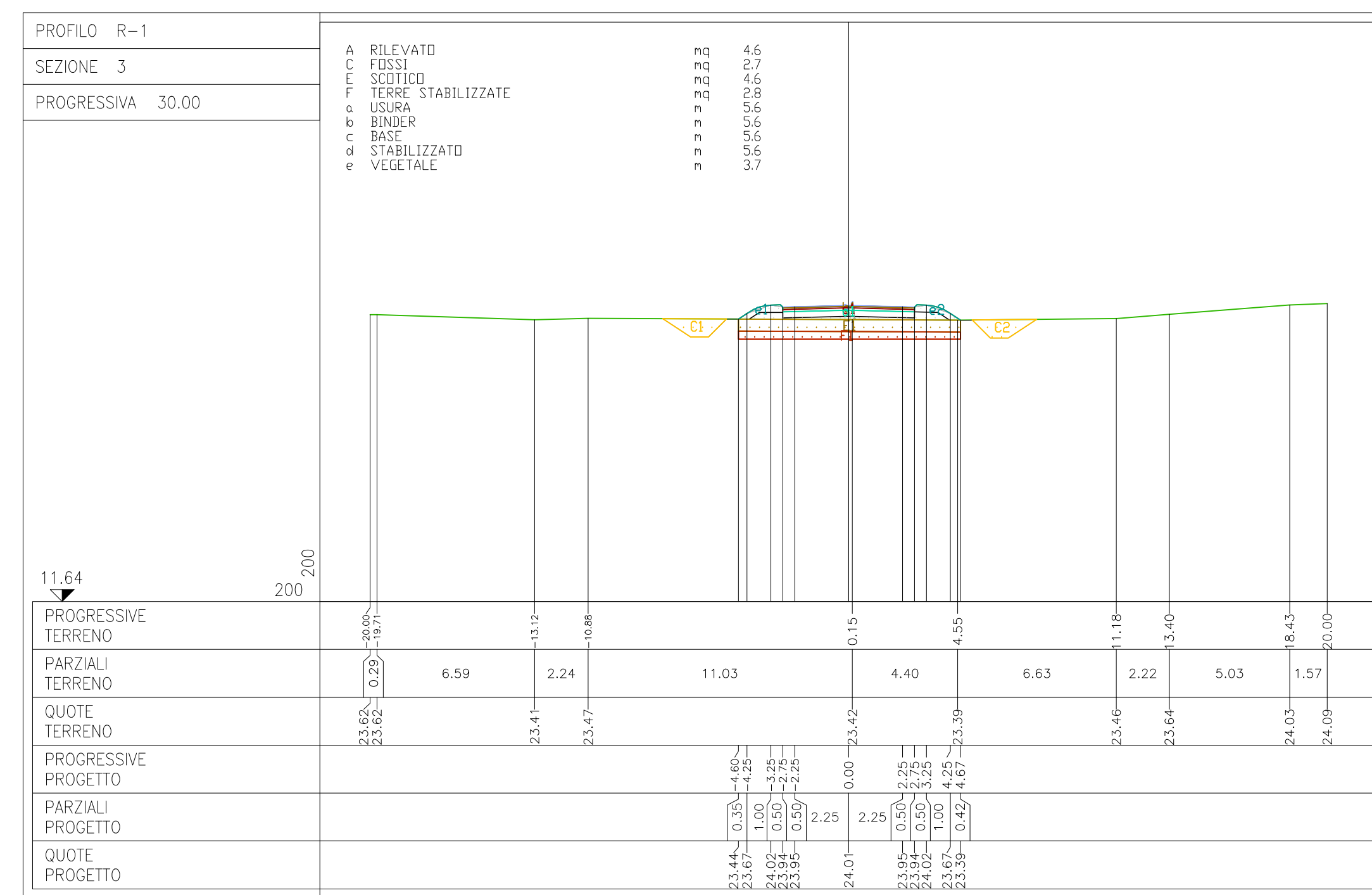
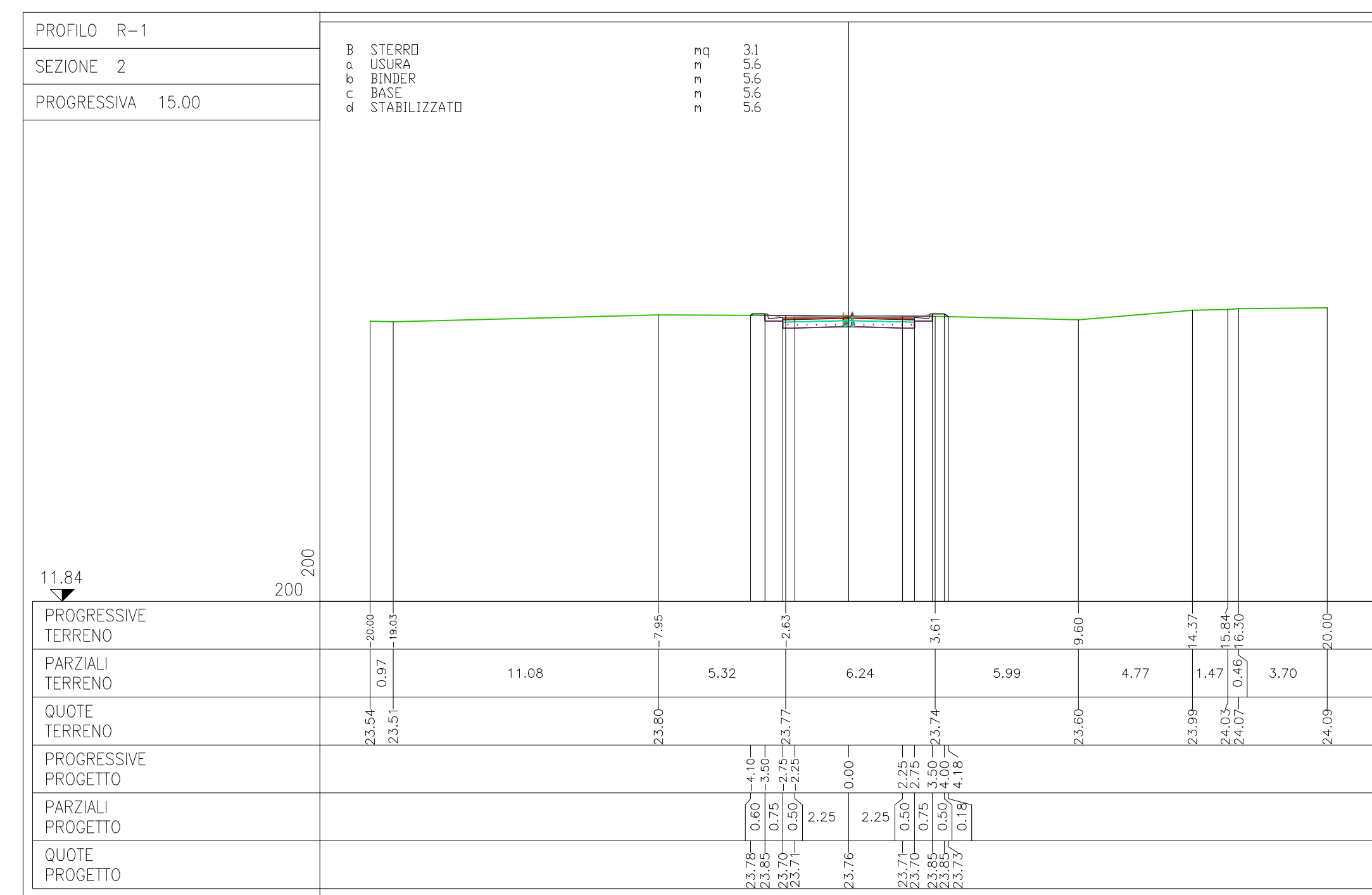
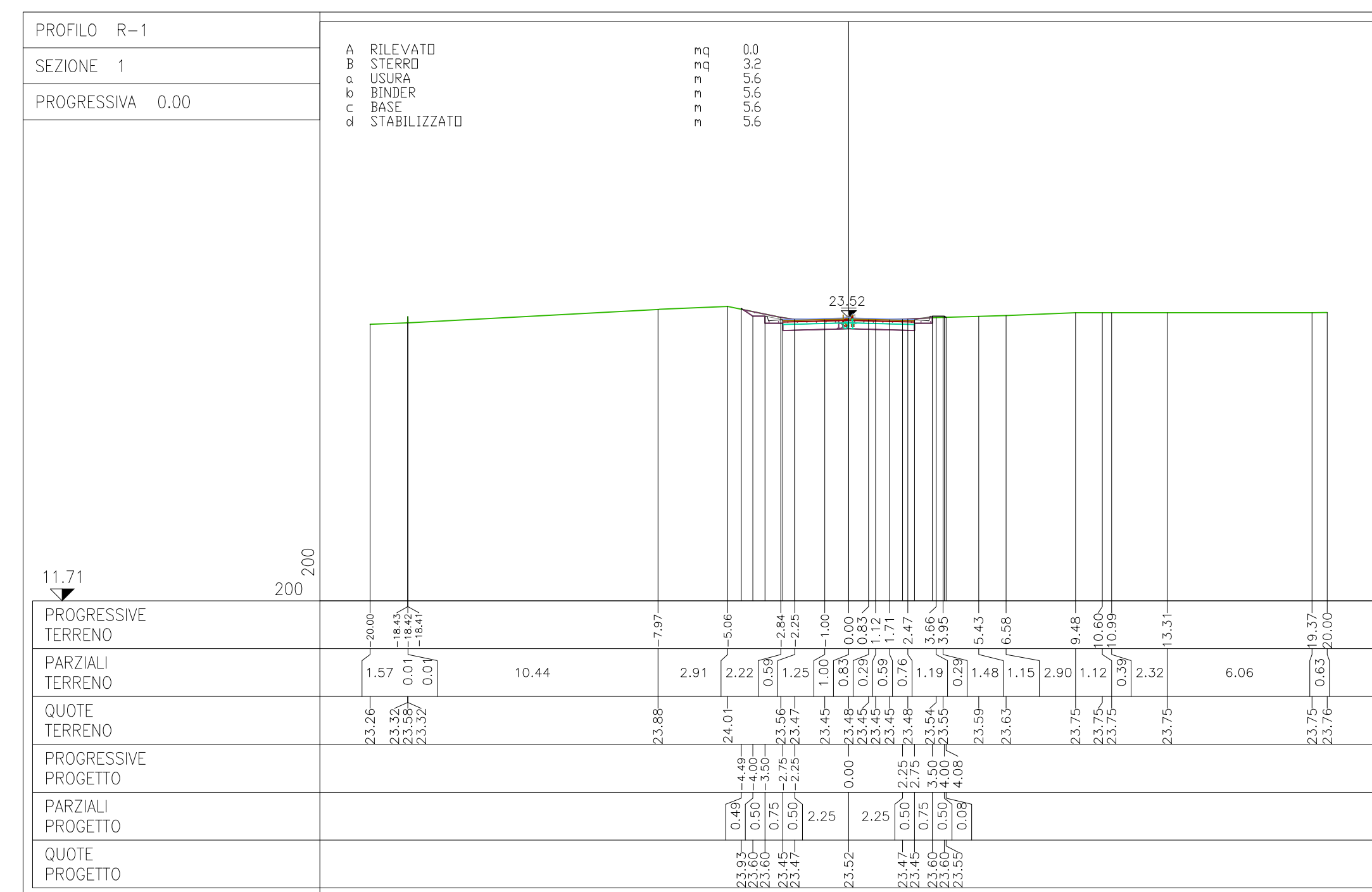
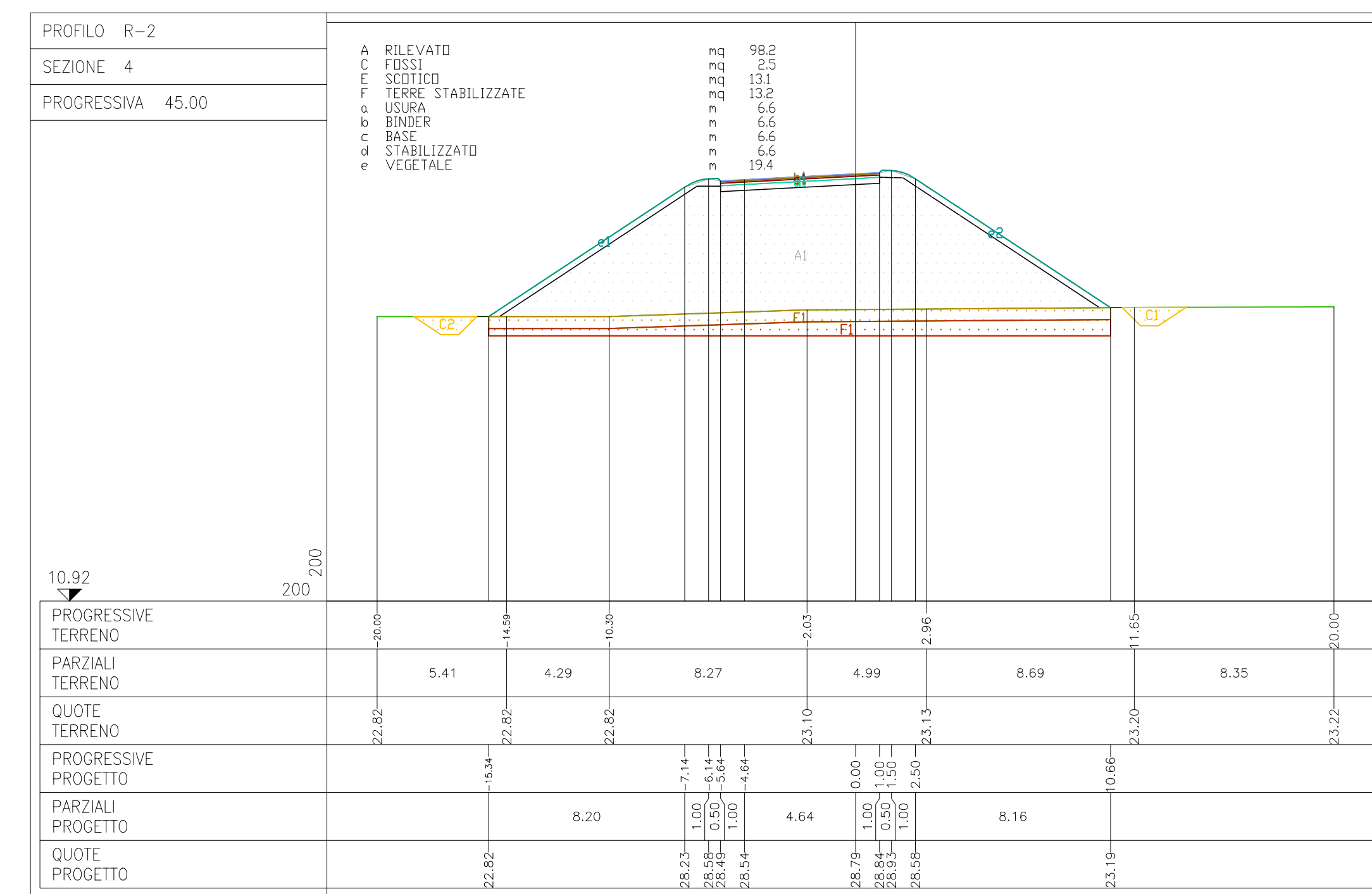
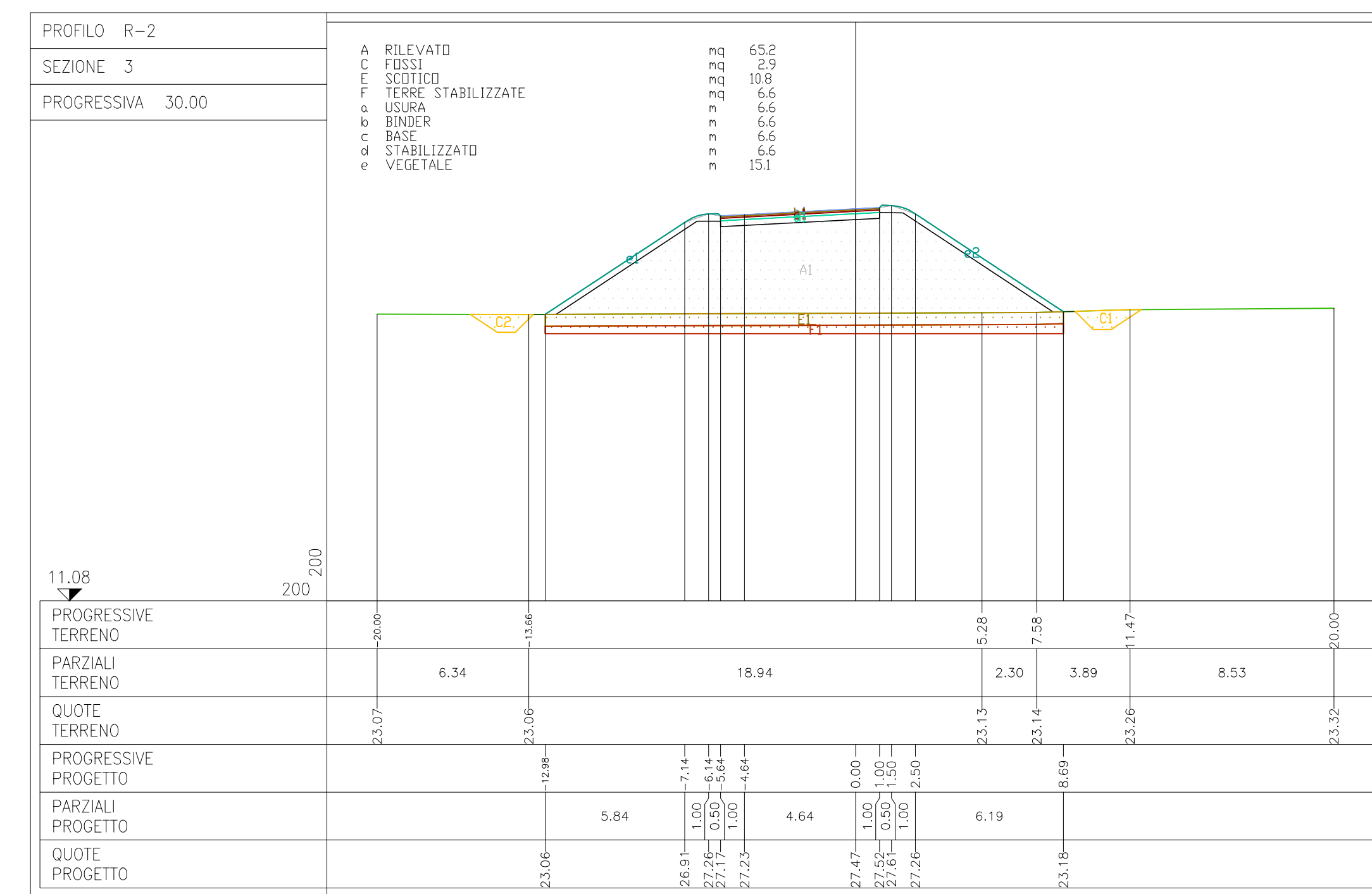
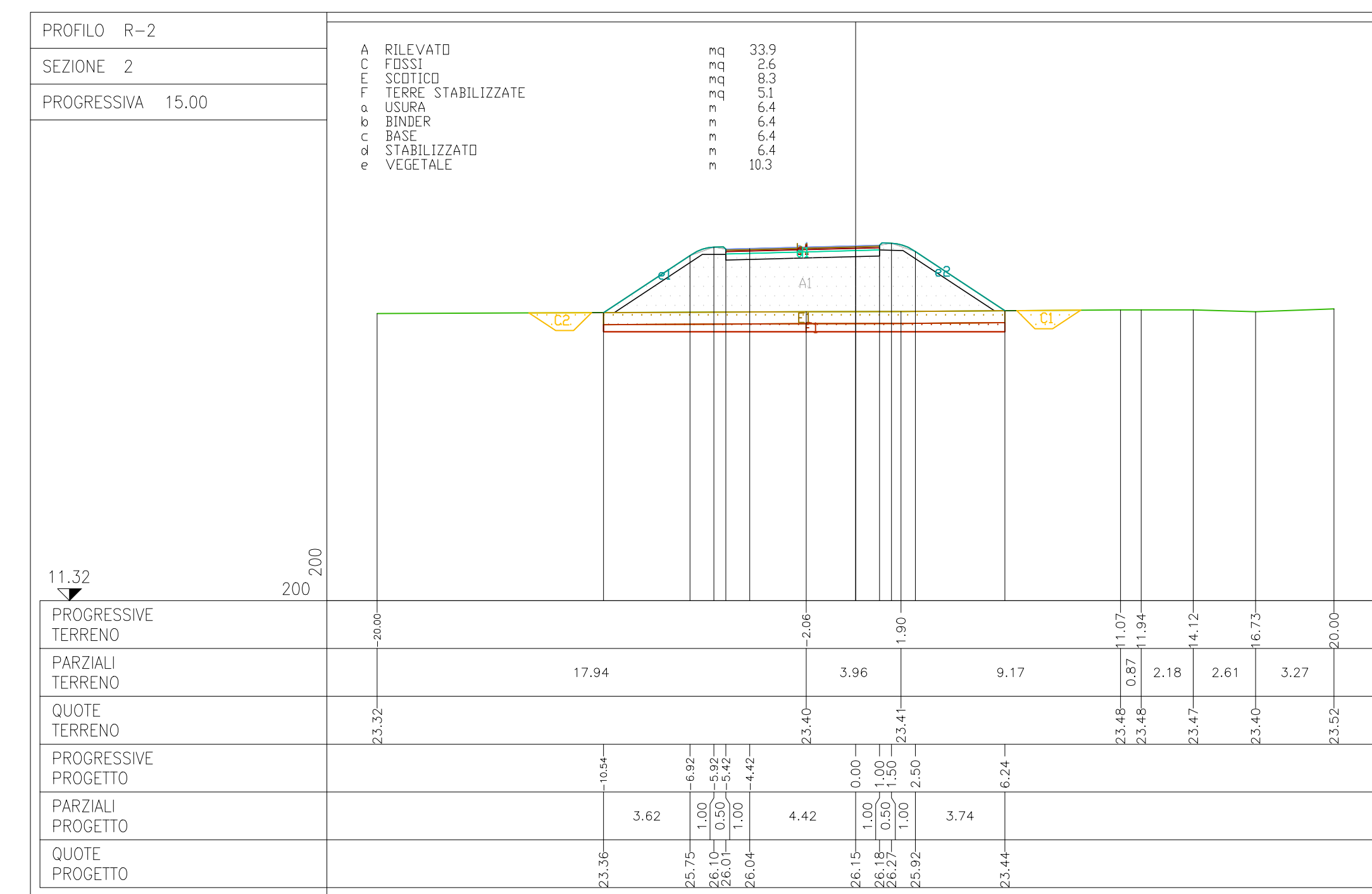
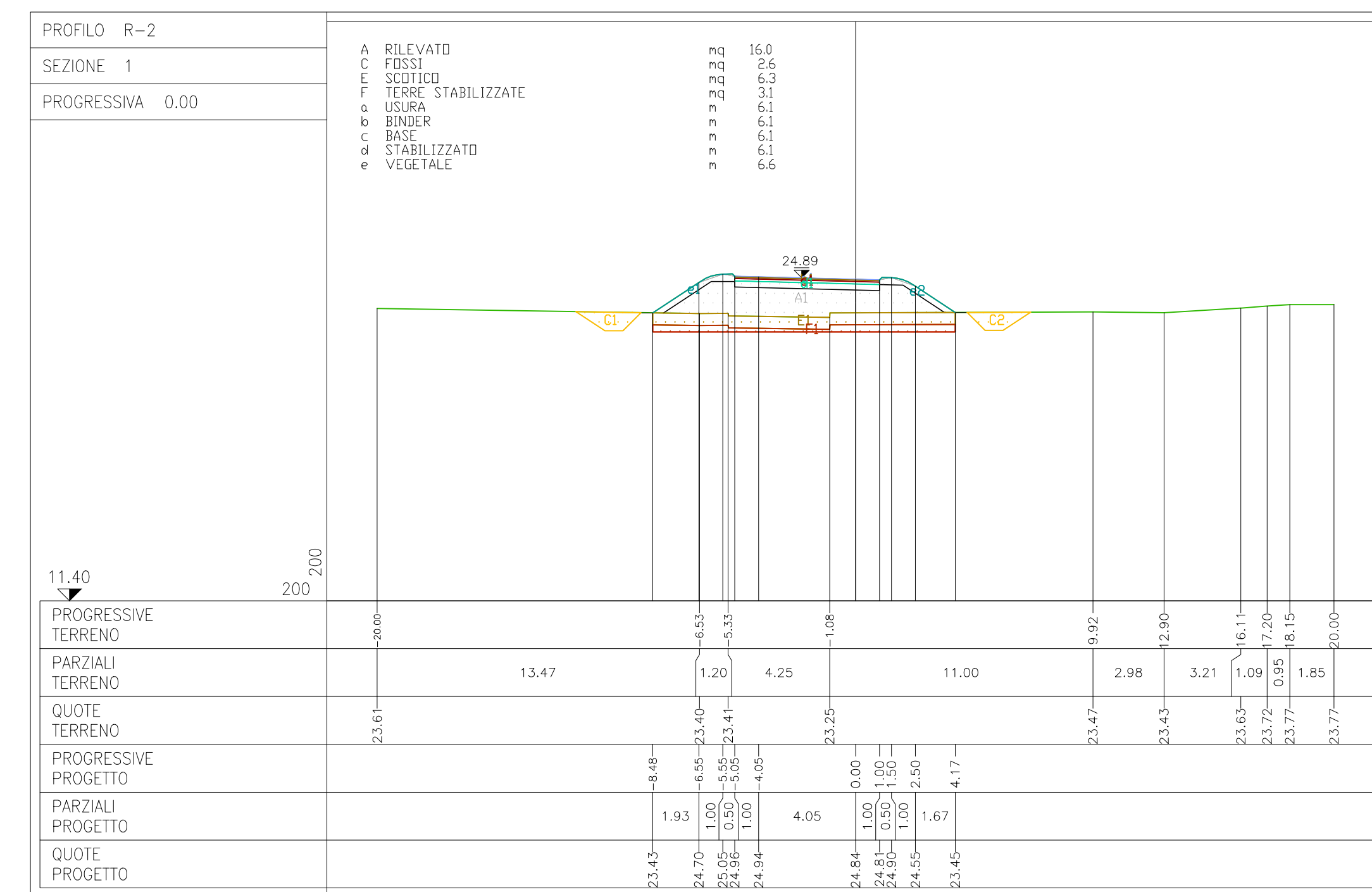


RAMPA "1"



RAMPA "2"



COMMITTENTE: **RFI** GRUPPO FERROVIE DELLO STATO ITALIANE

ALTA Sorveglianza: **ITALFERR** GRUPPO FERROVIE DELLO STATO ITALIANE

GENERAL CONTRACTOR: **Consorzio Iricav Due**

INFRASTRUTTURE FERROVIARIE STRATEGICHE DEFINITE DALLA LEGGE OBBIETTIVO N. 443/01

PROGETTO DEFINITIVO

LINEA AVIAC VERONA - PADOVA  
SUB TRATTA VERONA - VICENZA  
1° SUB LOTTO VERONA - MONTEBELLO VICENTINO

DISEGNO  
INTERFERENZE VIARIE - IN47 - DEVIAZIONI STRADALE SS PORCILANA DAL km 19+925 AL km 20+546  
SEZIONI TRASVERSALI - RAMPA 1 E RAMPA 2

PROGETTISTA INTEGRATORE	CONDORZIO IRICAV DUE	ITALFERR S.p.A.
ATI bonifica		

Scala: 1:200

COMMESSA	LOTTO	FASE	ENTE	TIPO DOC.	OPERA/DISCIPLINA	PROGR.	REV.
IN47	00	D	I2	W9	IN4700	005	A

Progettazione:		VISTO ATI BONIFICA					
Rev.	Descrizione	Redatto	Data	Verificato	Data	Approvato	Data
A	EMMISSIONE	P. Deppa	10/04/15	LLucido	13/04/15		13/04/15

File: IN47000219N470000A\_00AAA.DWG CUSP: J41E9100020009 n. Elab.:  
CIG: 3320049F17