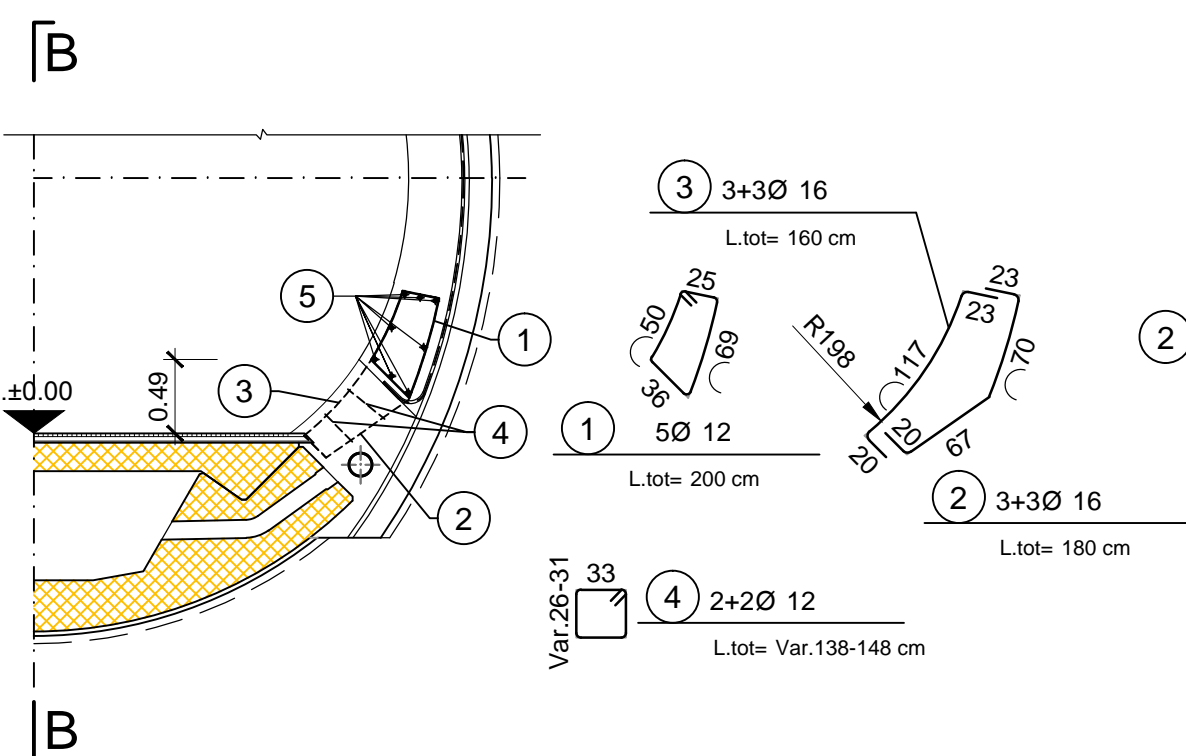
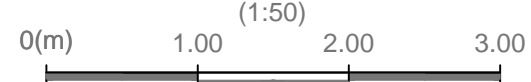
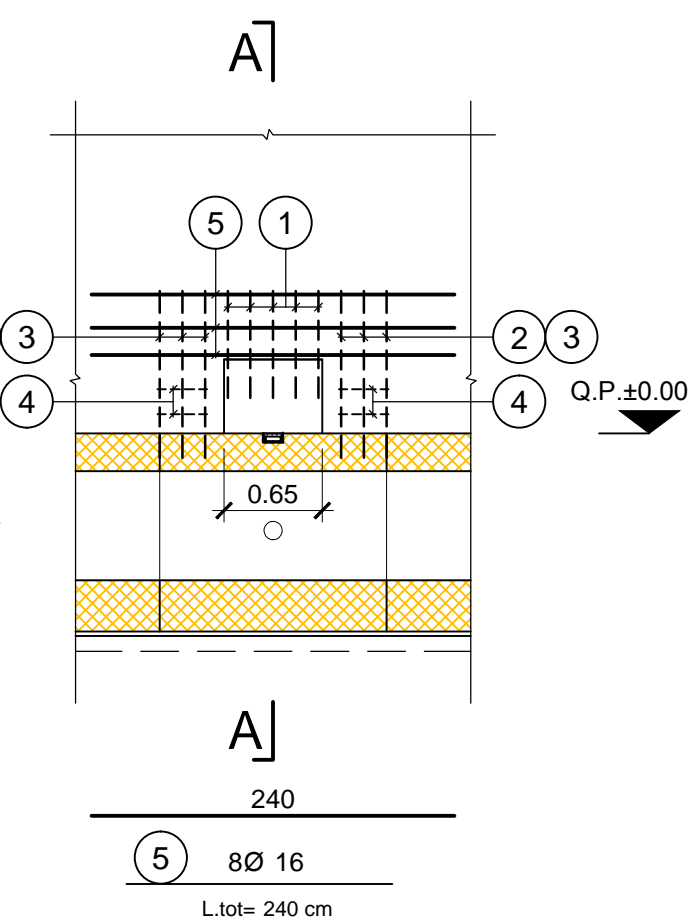
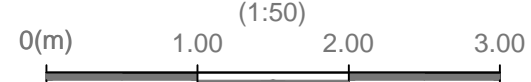


**SCHNITT C-T2,3
SEZIONE C-T2,3**

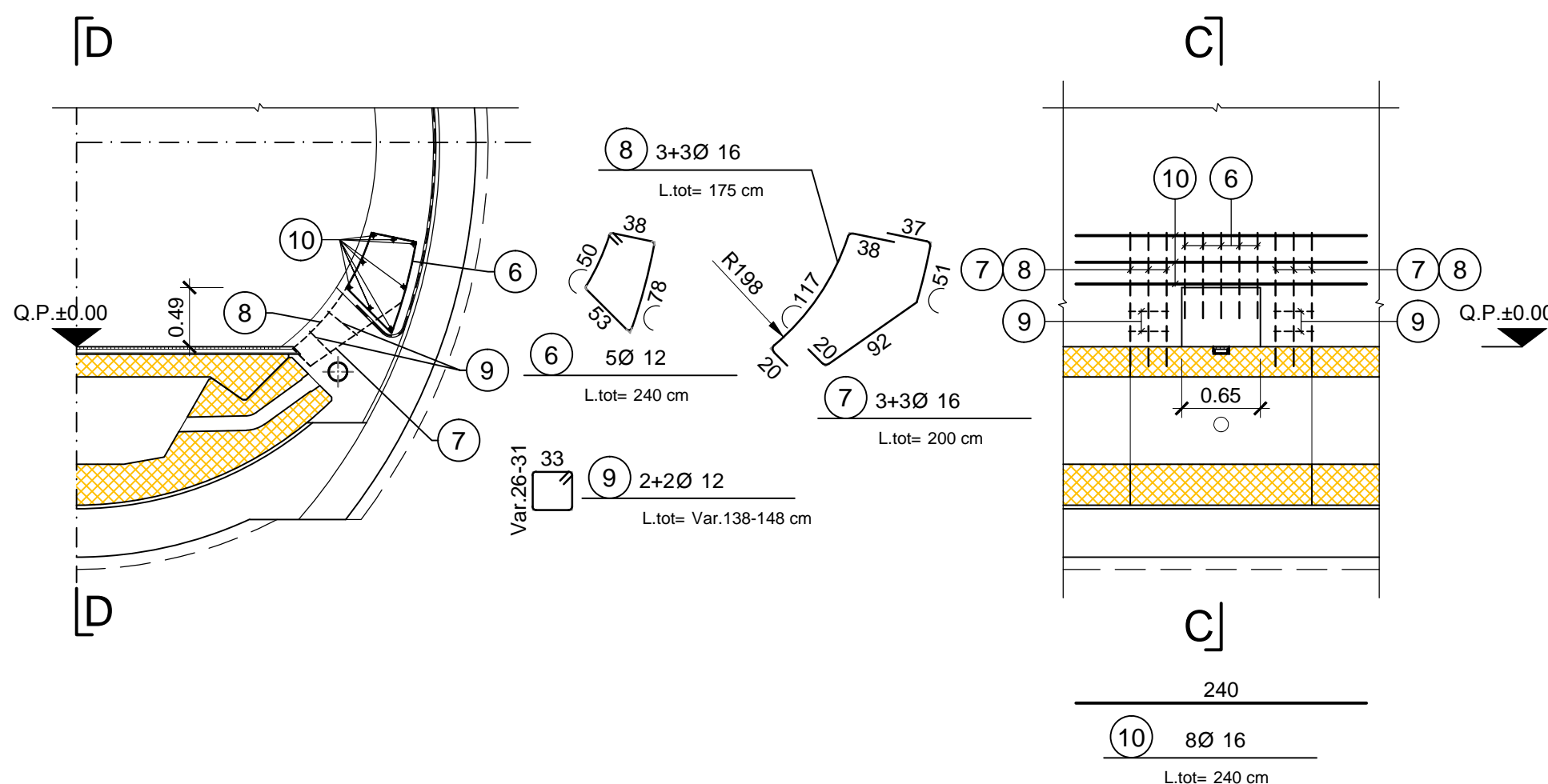
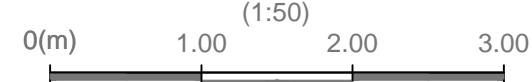
SCHNITT A-A / SEZIONE A-A



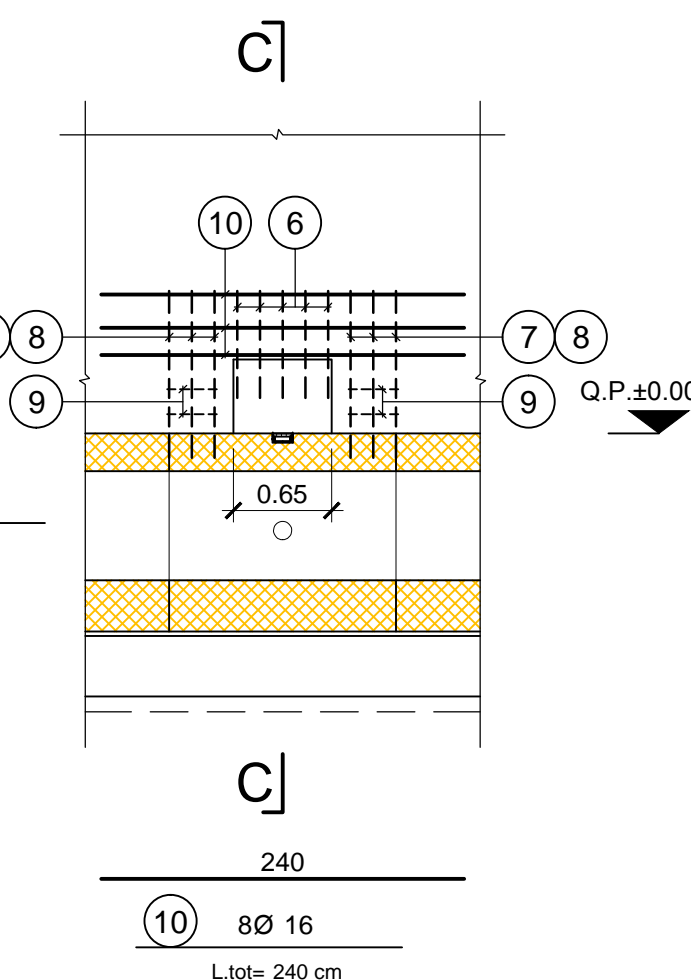
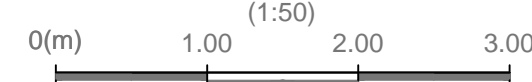
SCHNITT B-B / SEZIONE B-B



SCHNITT C-C / SEZIONE C-C



SCHNITT D-D / SEZIONE D-D

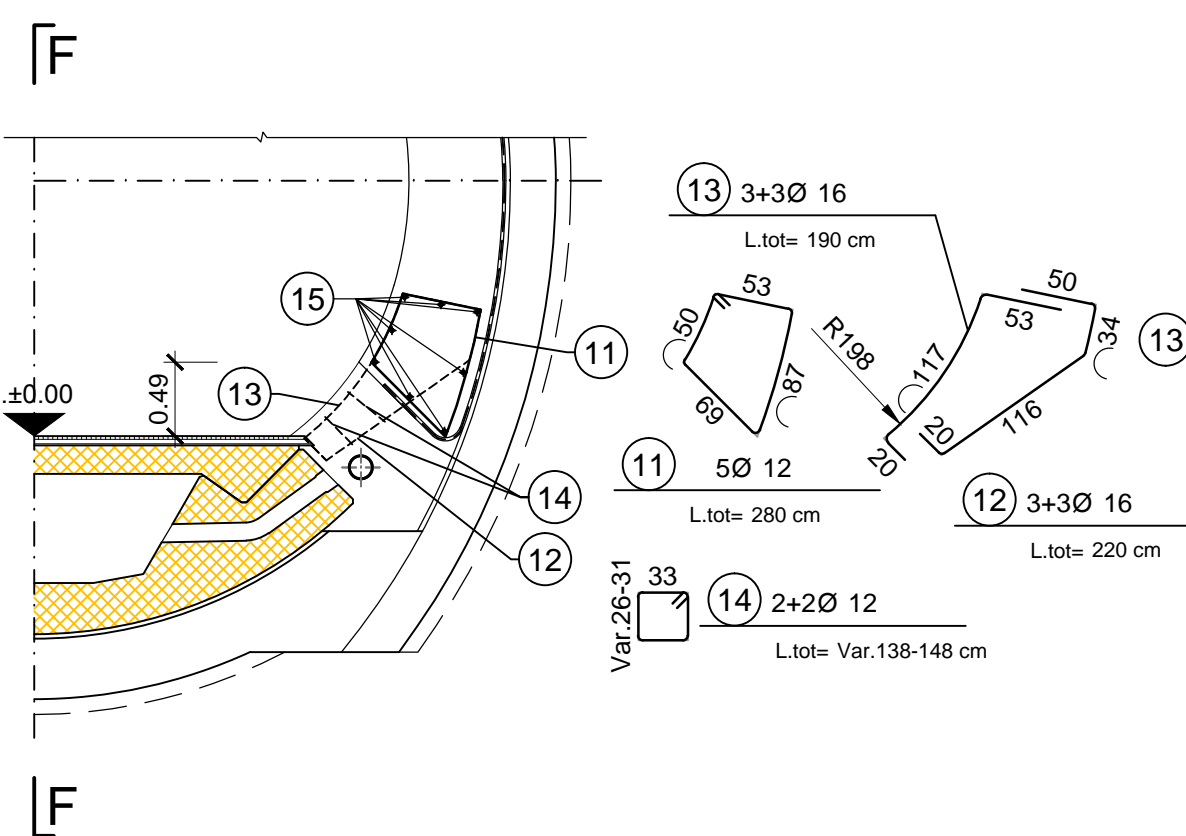
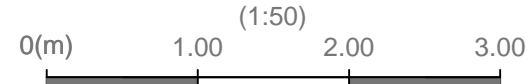


ANMERKUNGEN / ANNOTAZIONI

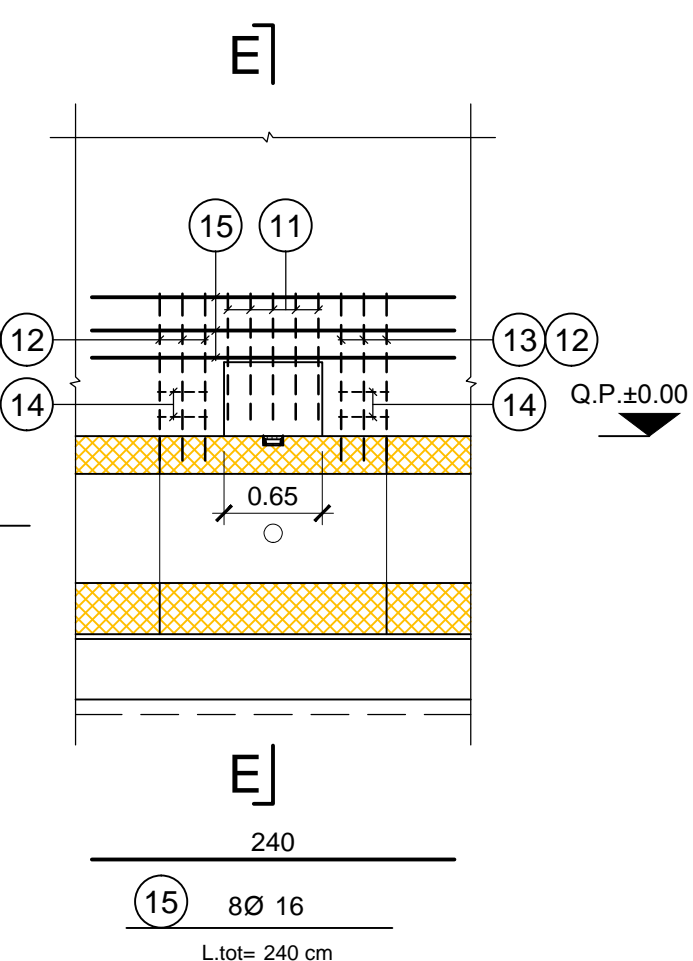
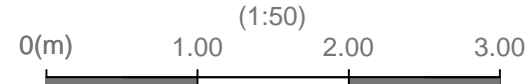
Q.P. Projekthöhe Erkundungsstollen
Quota di progetto Cunicolo esplorativo

**SCHNITT C-T5
SEZIONE C-T5**

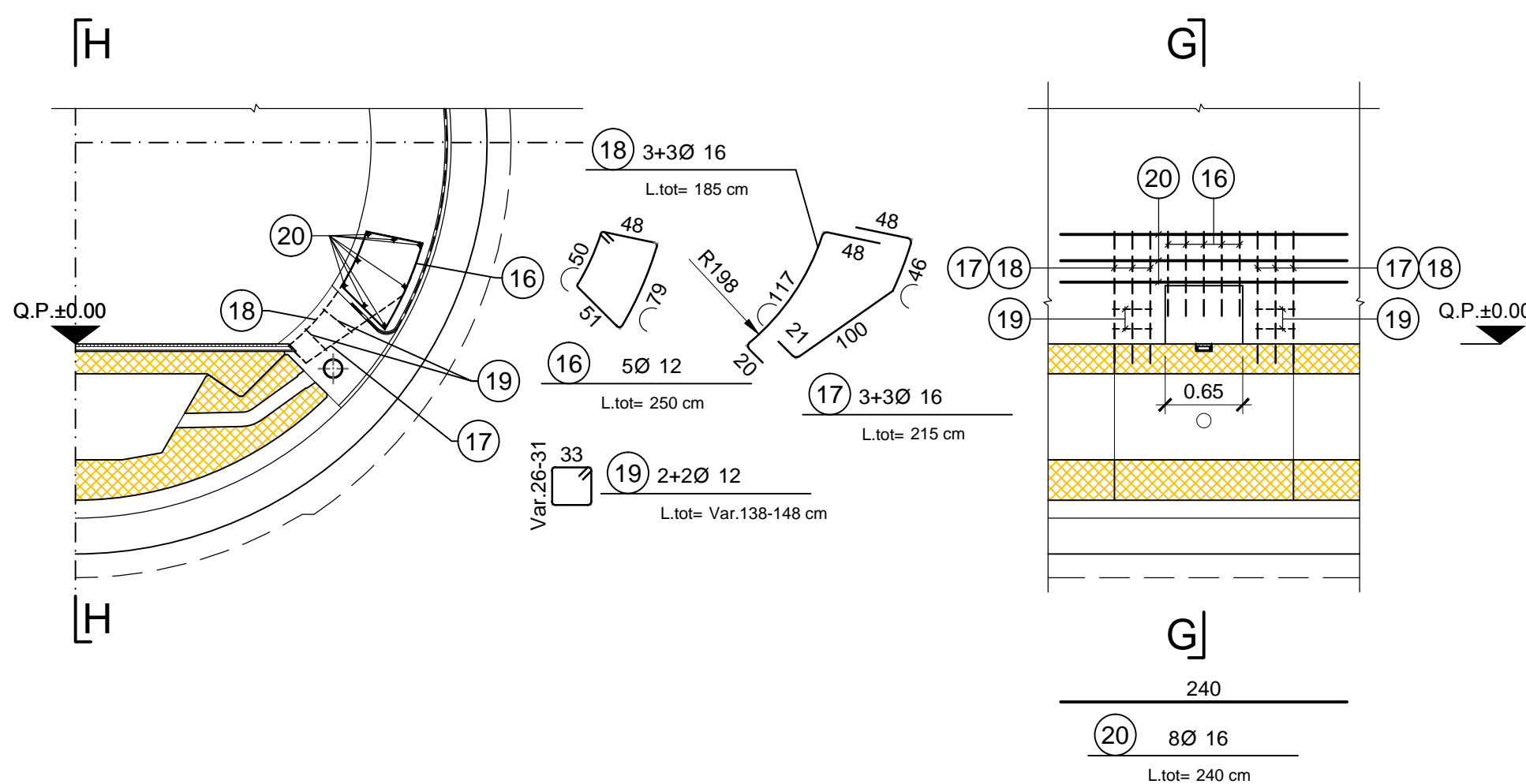
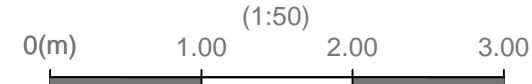
SCHNITT E-E / SEZIONE E-E



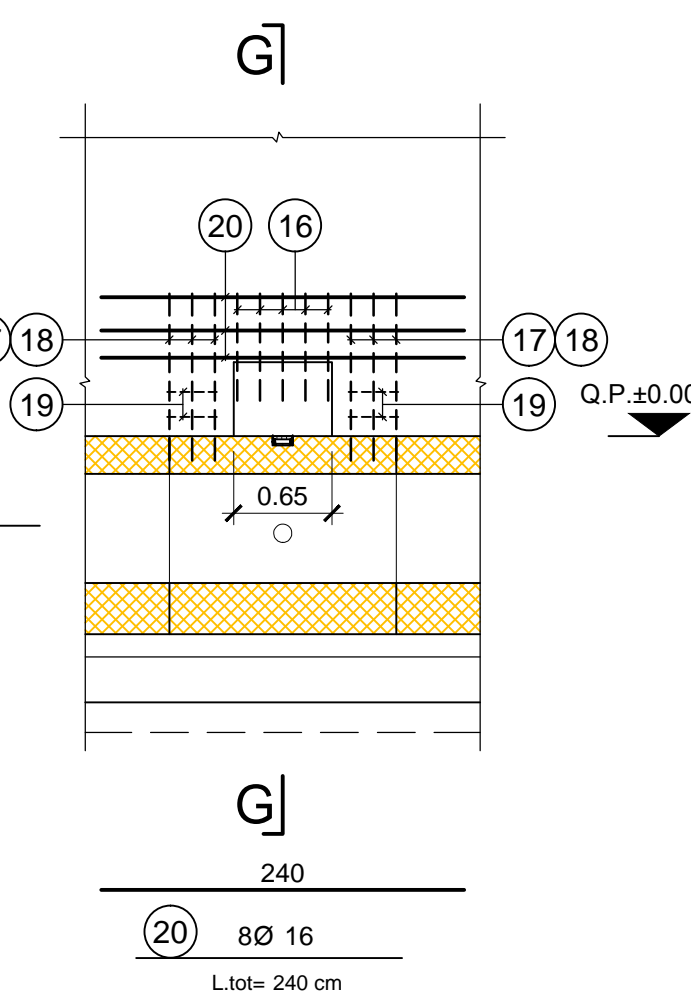
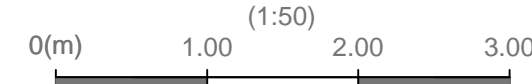
SCHNITT F-F / SEZIONE F-F



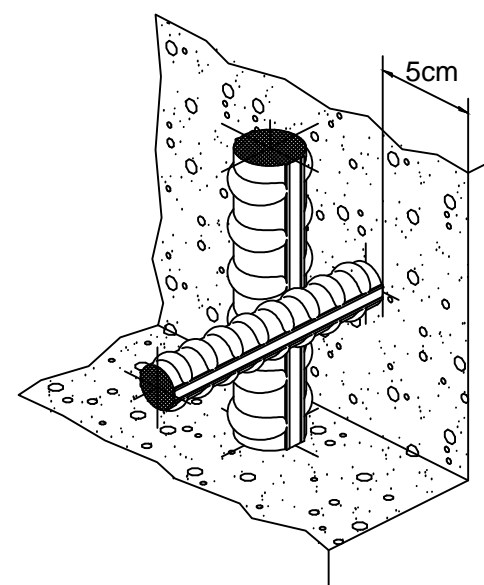
SCHNITT G-G / SEZIONE G-G



SCHNITT H-H / SEZIONE H-H



**Detail Betonstärke über der Bewehrung /
Particolare copriferro**

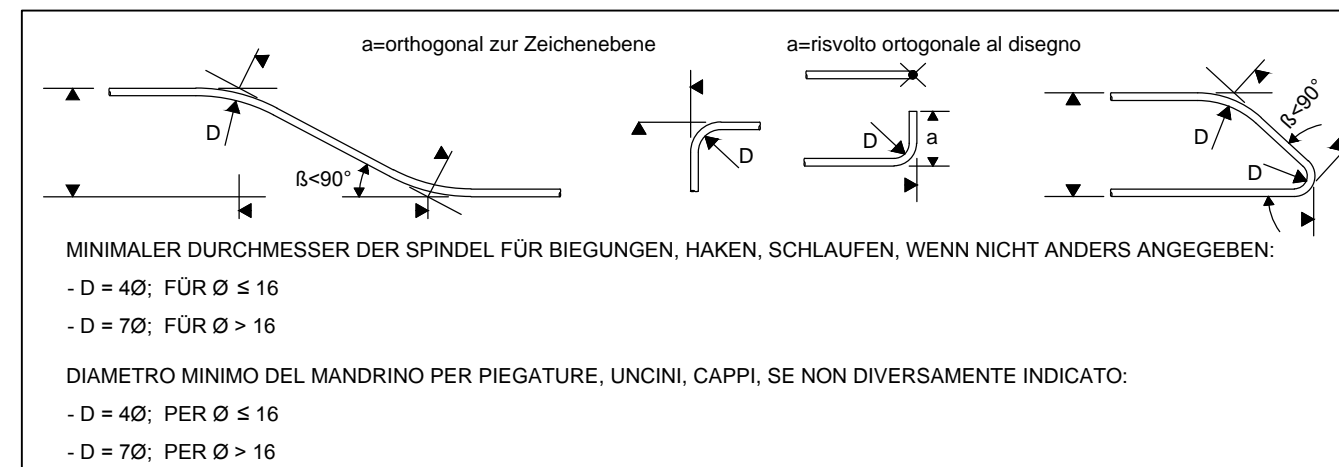


MATERIALEIGENSCHAFTEN UND SPEZIFISCHE AUSFÜHRUNGSVERFAHREN

- BEWEHRUNGSSTAHL:
Stahlstäbe B 450 C
- BETONSTARKE BIS ZUM EISENERGÜST:
Betonstarke über dussere Bewehrung =5cm.
- UBERLAGERUNGEN:
Überlagerung für Verteilungs- und/oder Langseisen >50Ø

CARATTERISTICHE DEI MATERIALI E SPECIFICHE TECNICHE

- ACCIAIO PER ARMATURE:
Barre in acciaio B 450 C.
- COPRIFERRO:
Copriferro su armatura esterna =5cm.
- SOVRAPPOSIZIONI:
Sovrapposizioni per ferri ripartitori e/o longitudinali >50Ø

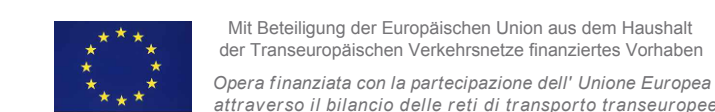


**Referenzdokumente
Documenti di riferimento**

02_H61_KI_011_KSC_D0700_21485	Schalung C-T2, 3, 4, 5, 6	Carpenteria C-T2, 3, 4, 5, 6
-------------------------------	---------------------------	------------------------------

**Bearbeitungsstand
Stato di elaborazione**

Revision	Änderungen / Modifiche	Verantwortlicher Änderung / Responsabile modifica	Datum / Data
20	Überarbeitung infolge Dienstanweisung Nr. 1 vom 17.10.2014 / Revisione a seguito ODS n°1 del 17.10.14	Rivoltini	04.12.2014
21	Abgabe für Ausschreibung / Emissione per Appalto	Rivoltini	30.01.2015



Mit Beteiligung der Europäischen Union aus dem Haushalt der Transeuropäischen Verkehrsnetze finanziertes Vorhaben
Opera finanziata con la partecipazione dell'Unione Europea attraverso il bilancio delle reti di trasporto transeuropee



Ausbau Eisenbahnachse München-Verona
BRENNER BASISTUNNEL
Ausführungsplanung
Potenziamento asse ferroviario Monaco - Verona
GALLERIA DI BASE DEL BRENNERO
Progettazione esecutiva

D0700: Baulos Mules 2-3	D0700: Lotto Mules 2-3
Projekteinheit	WBS
Erkundungsstollen - konventioneller Vortrieb Cunicolo esplorativo in tradizionale	
Dokumentenart	Tipo documento
Bewehrungsplan	Armatura
Titel	Titolo
Bewehrungsdetails C-T2, 3, 4, 5, 6	Armatura C-T2, 3, 4, 5, 6 - Particolari

RTI 4P
Raggruppamento Temporaneo di Imprese 4P
Ing. Enrico Maria Pizzarotti
02-83991000

Mandataria	Mandante	Mandante	Mandante
PRO I TER	PÖYRY	pini swiss engineers	PASQUALI-RAUSA
Fachplaner / il progettista specialista	Fachplaner / il progettista specialista	Fachplaner / il progettista specialista	Fachplaner / il progettista specialista
Ing. Enrico Maria Pizzarotti 02-83991000			

Bearbeitet / Elaborato	Datum / Data	Name / Nome	Gesellschaft / Società
Geprüft / Verificato	30.01.2015	Olmo	Pro I ter
	30.01.2015	Rivoltini	Pro I ter
		R. Zurlo	K. Bergmeister

Projekt / Stato	von / da / bis / a / bei / al	Reife / Unità	Nummer / Numero	Dokumentenart / Tipo documento	Vortrag / Consenso	Nummer / Numero	Revision / Revisione
02	H61	KI	011	KBW	D0700	21490	21