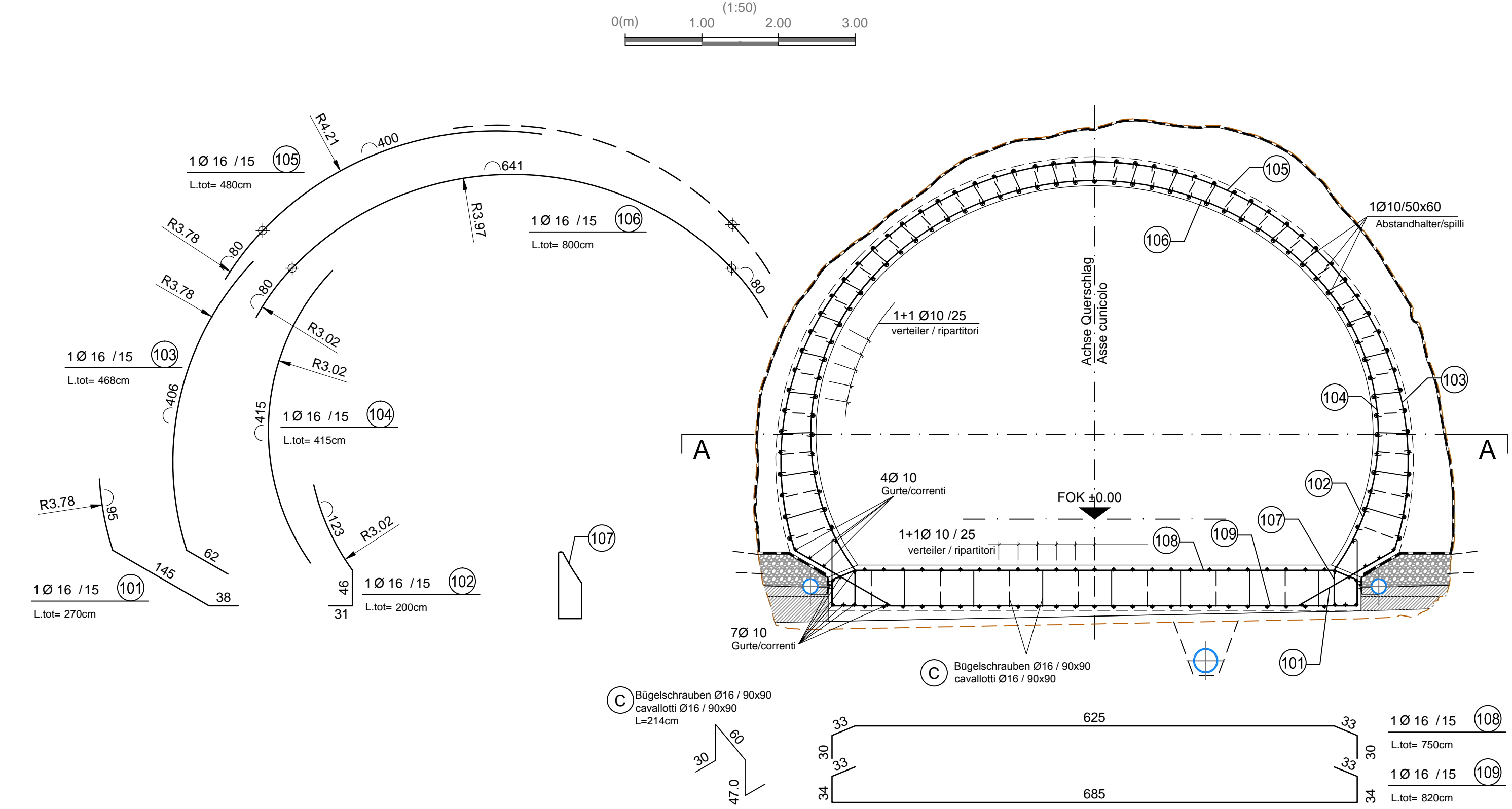
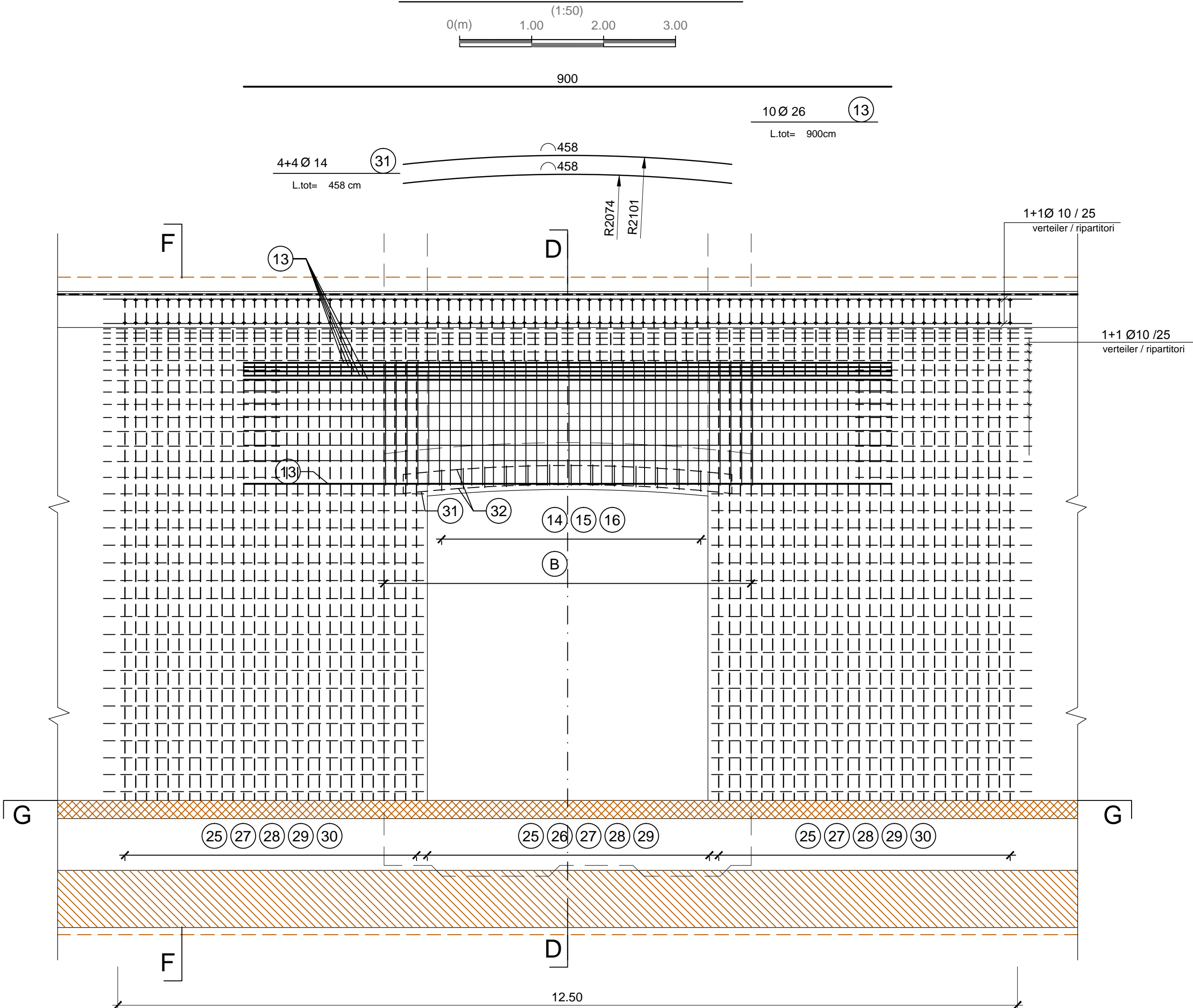


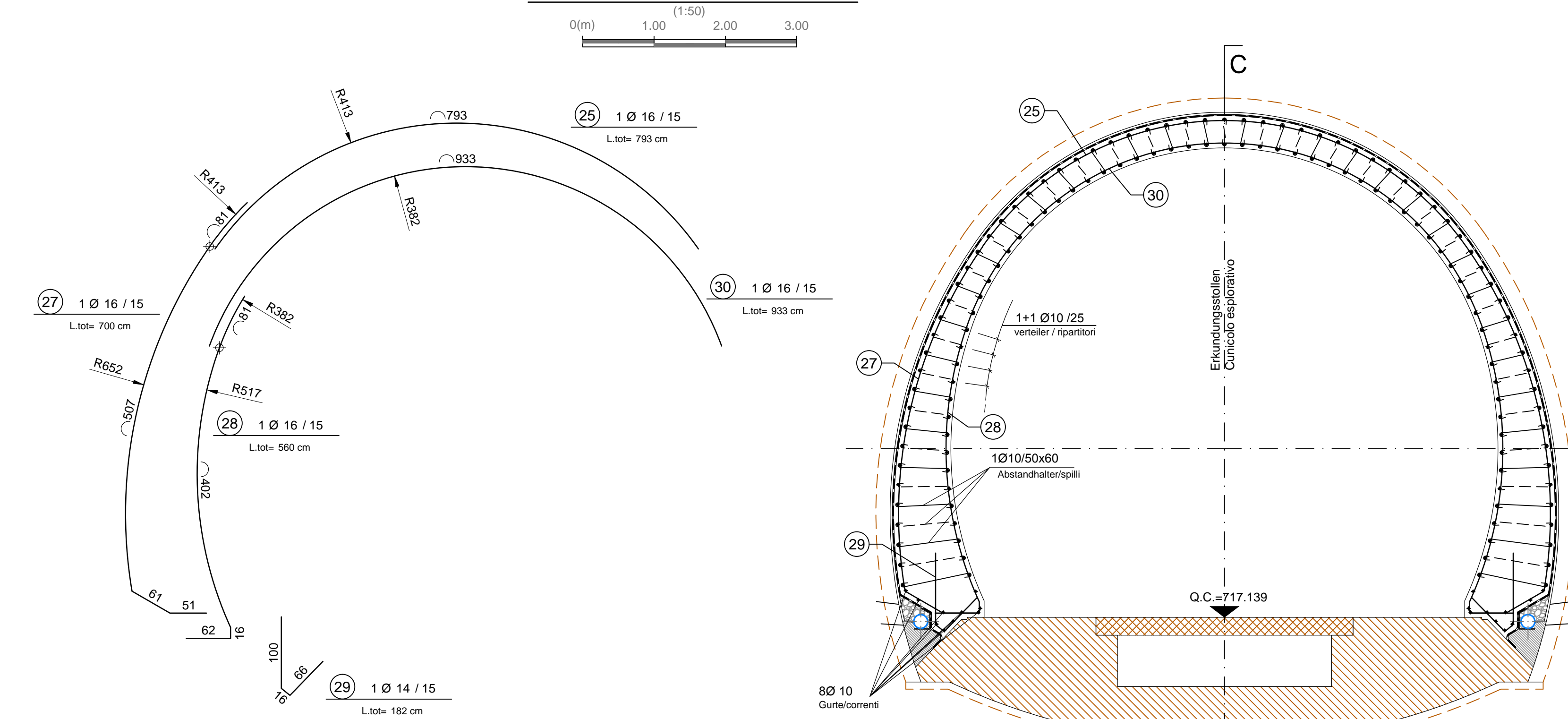
SCHNITT CT2-E-IN-N / SEZIONE CT2-E-IN-N



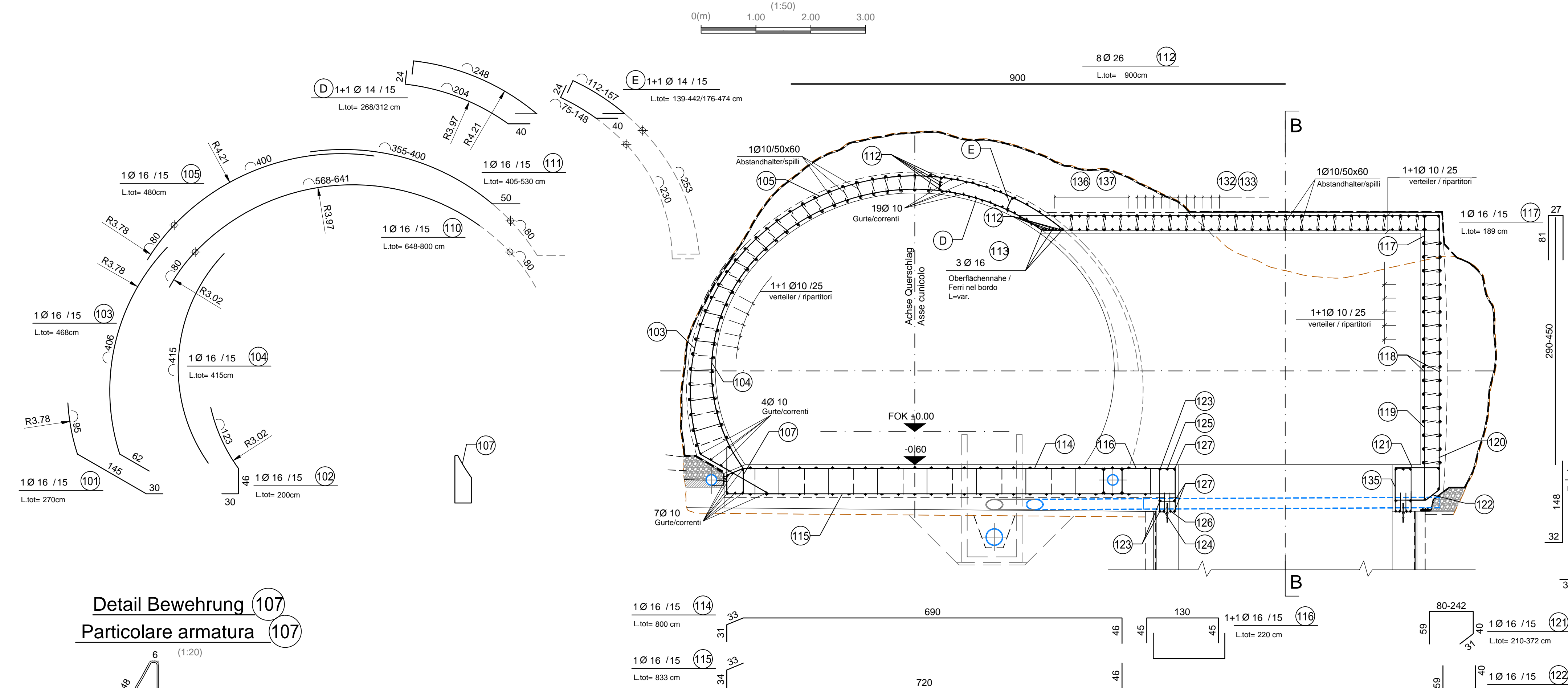
SCHNITT C-C / SEZIONE C-C



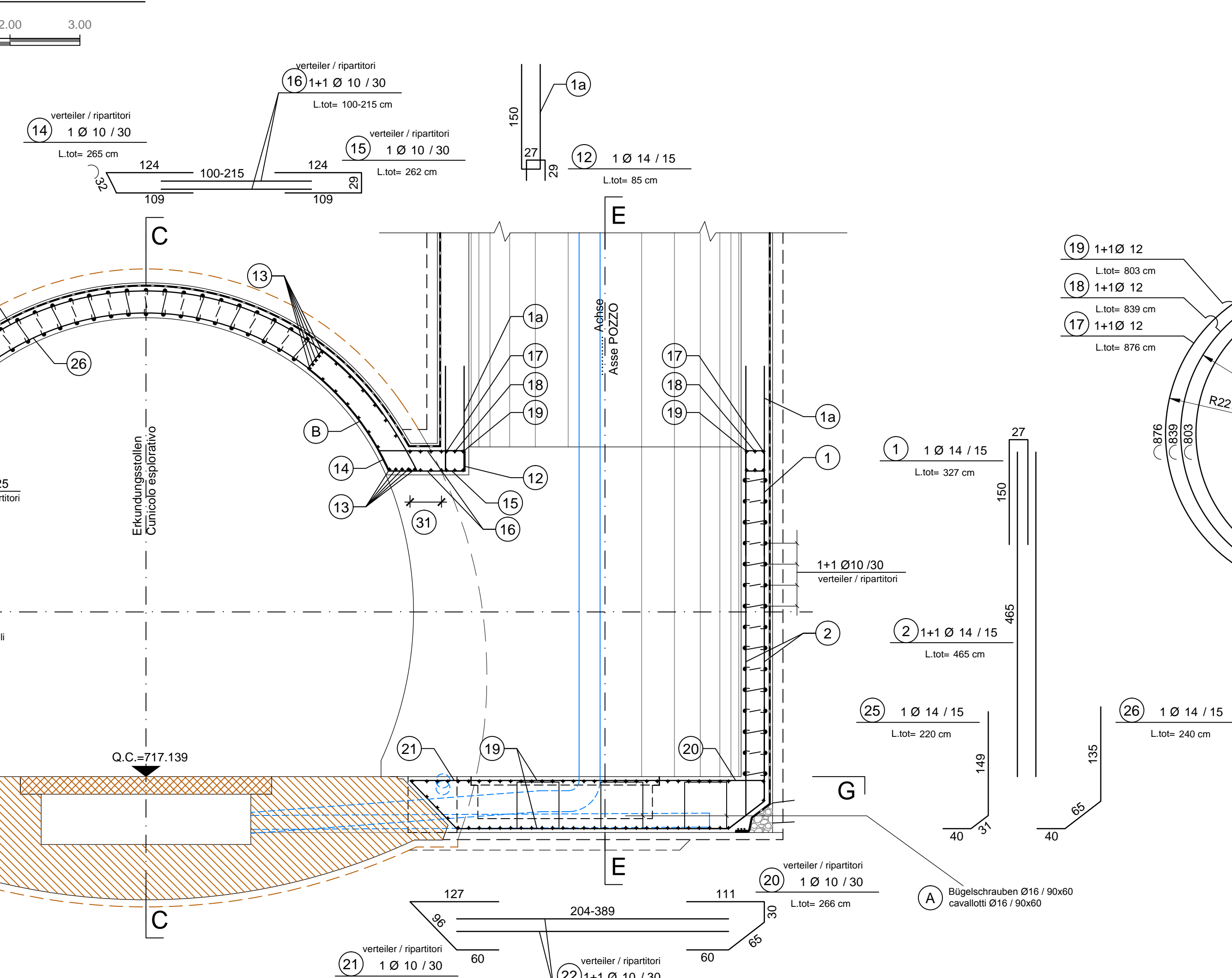
SCHNITT F-F / SEZIONE F-F



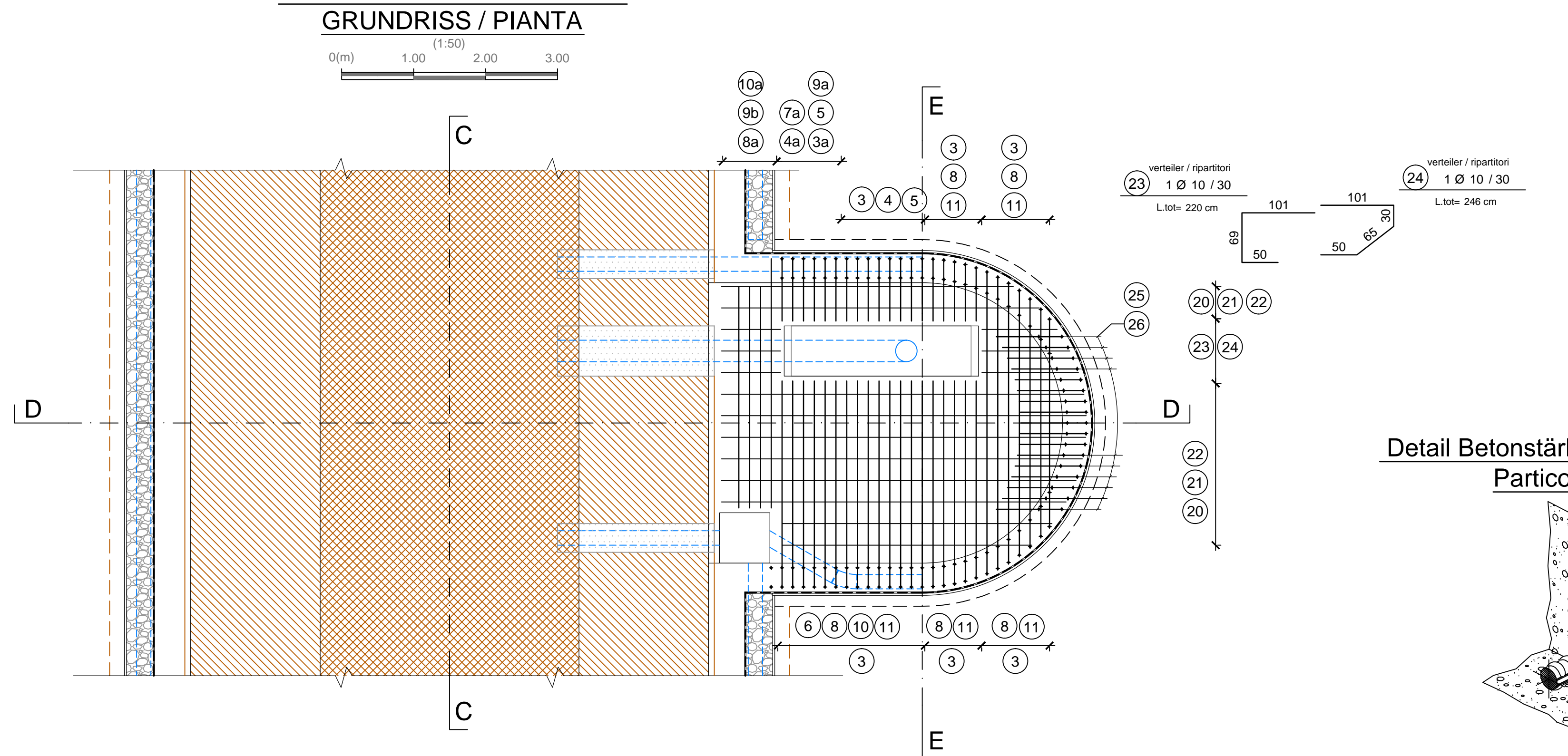
SCHNITT A-A / SEZIONE A-A



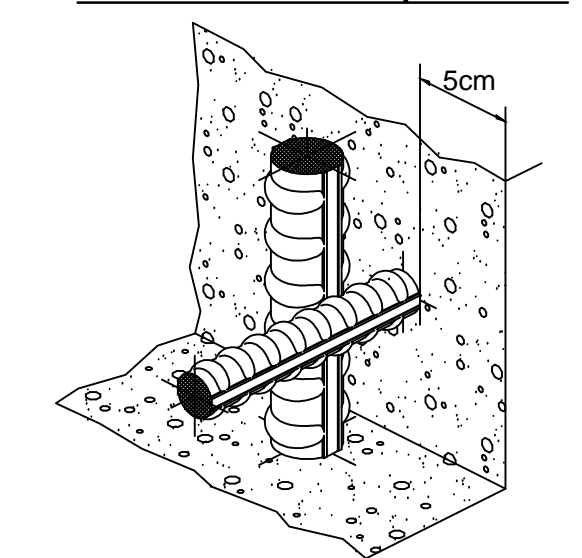
SCHNITT D-D / SEZIONE D-D



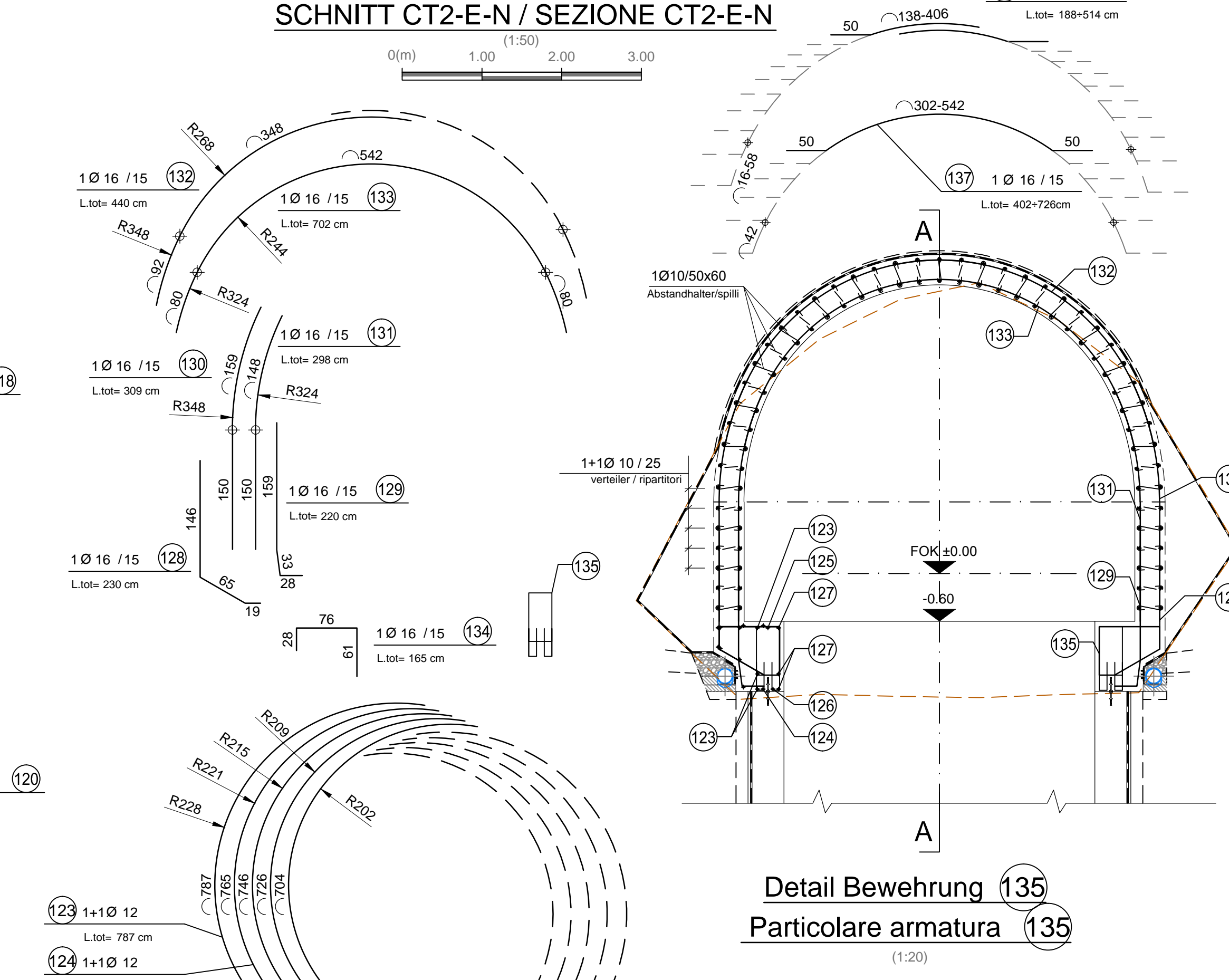
SCHNITT G-G / SEZIONE G-G



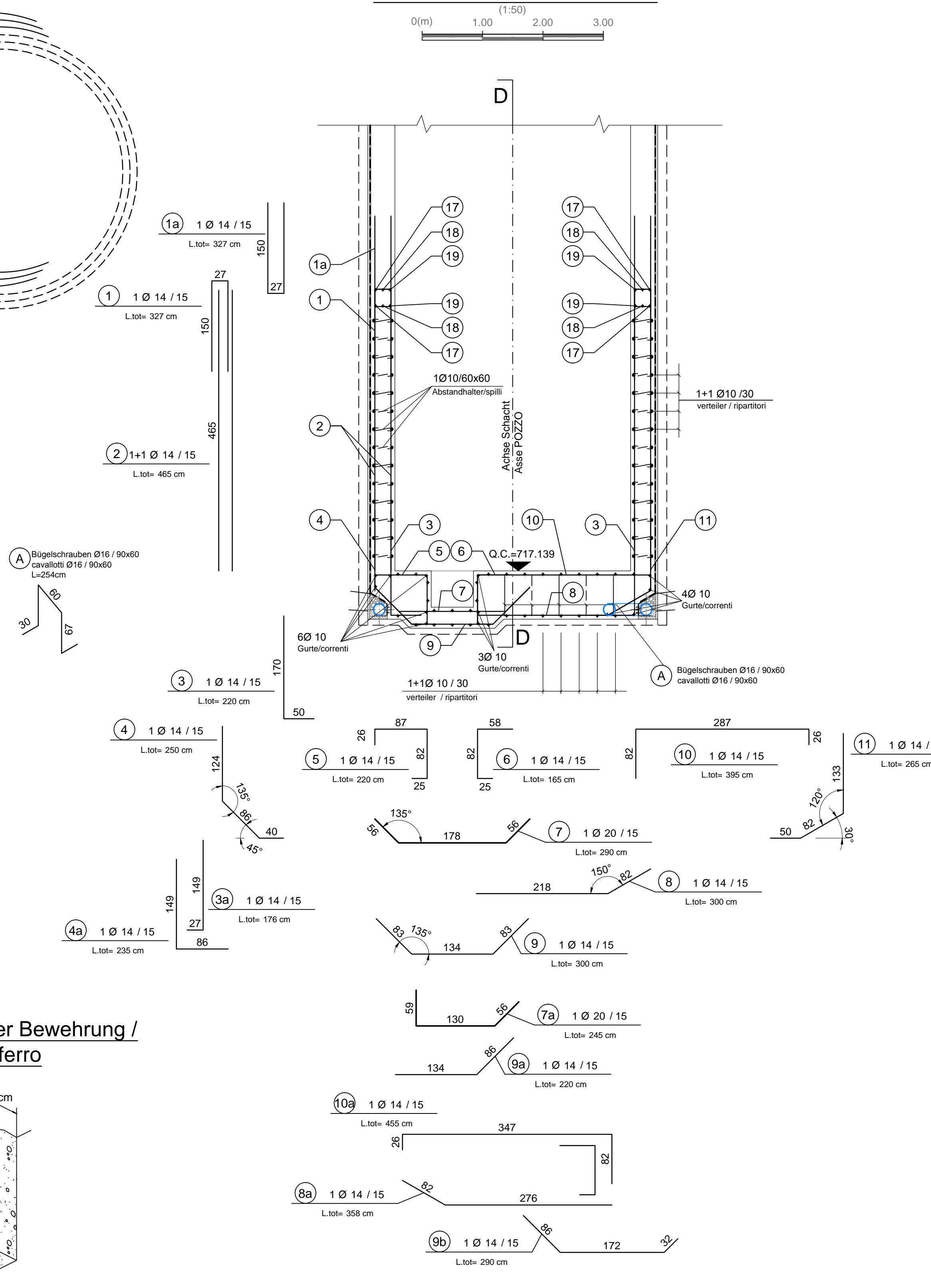
Detail Betonstärke über der Bewehrung / Particolare copri ferro



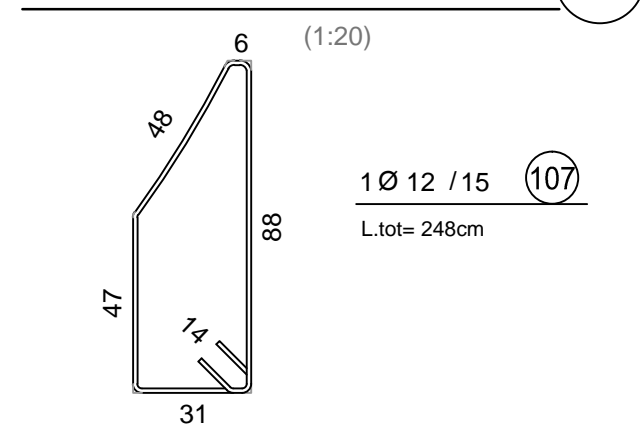
SCHNITT B-B / SEZIONE B-B



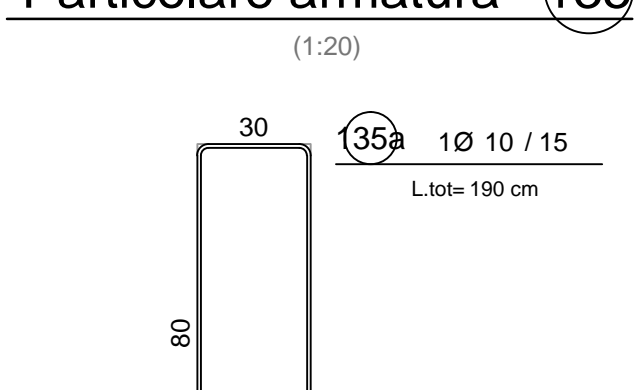
SCHNITT E-E / SEZIONE E-E



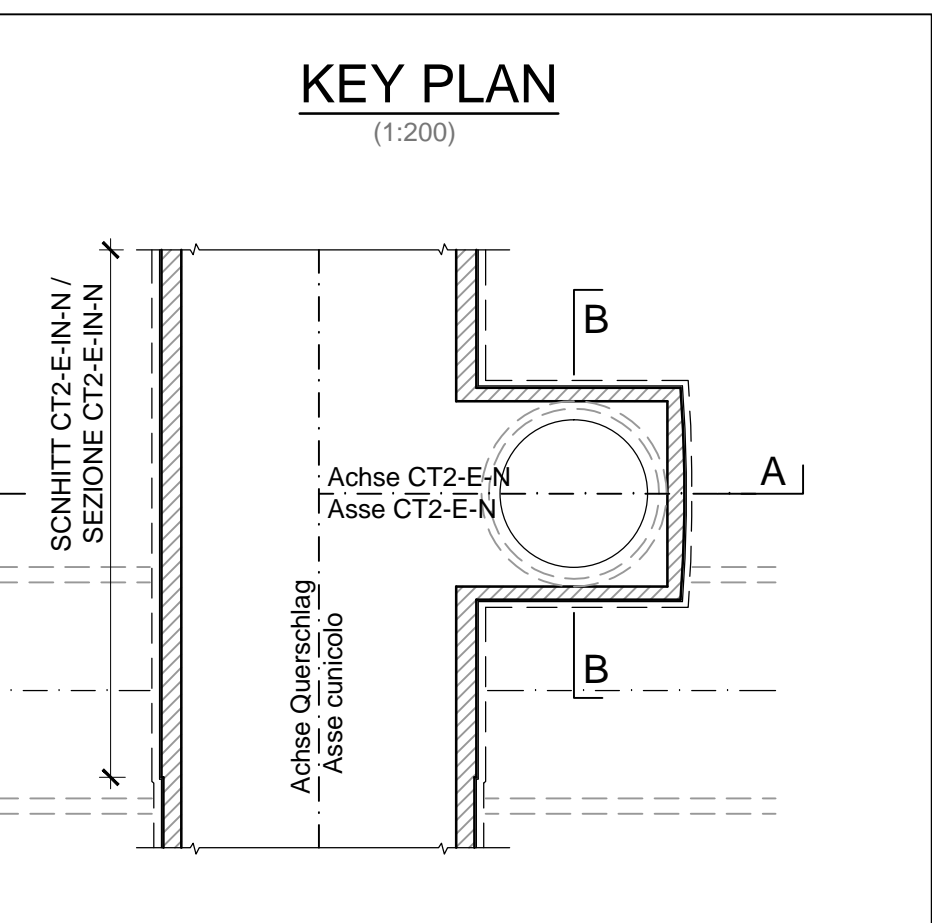
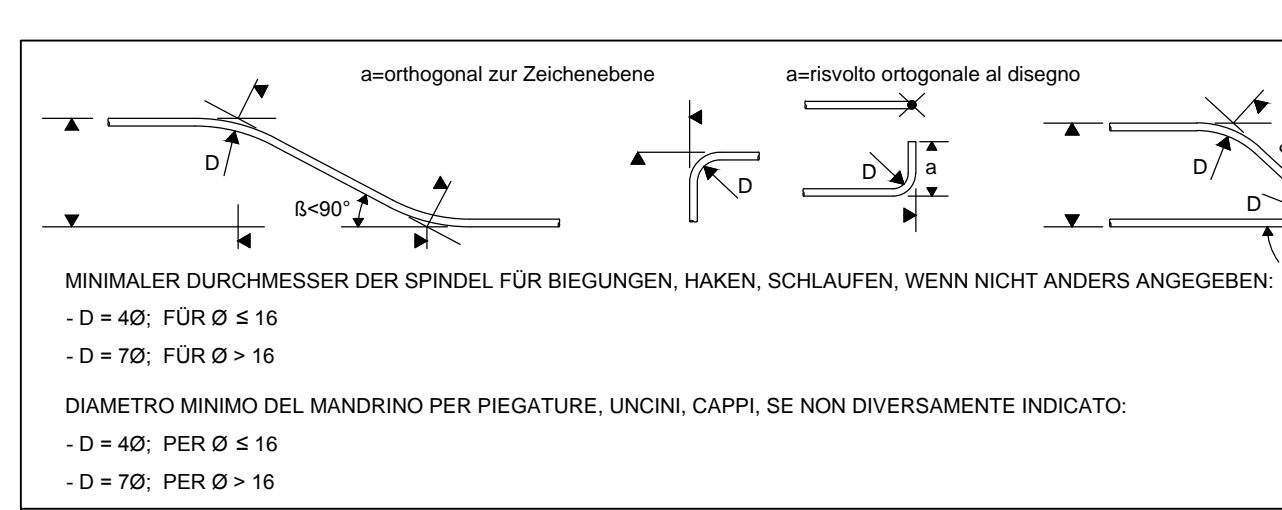
Detail Bewehrung 107 Particolare armatura 107



Detail Bewehrung 135 Particolare armatura 135



MATERIALEIGENSCHAFTEN UND TECHNISCHE SPEZIFIKATIONEN
- BEWEHRUNGSSTAHL:
- BETONDECKUNG:
- ÜBERGREIFUNGS- LÄNGE:
CARATTERISTICHE DEI MATERIALI E SPECIFICHE TECNICHE
- ACCIAIO PER ARMATURE:
- CONCRETO:
- SOVRAPPORZIONI:



ANMERKUNGEN / ANNOTAZIONI
FOK Kote Bodeniveau Querverbindung
QC Projektliche Erkundungsstellen

Referenzdokumente
Documenti di riferimento
02\_H61\_01\_100\_KSC\_00700\_21866

Bearbeitungsstand
Stato di elaborazione
Revisione
Revisione
Modifiche

Project information block including logos for BBT, RT4P, and other partners, project name (BRENNER BASISTUNNEL), and technical specifications.