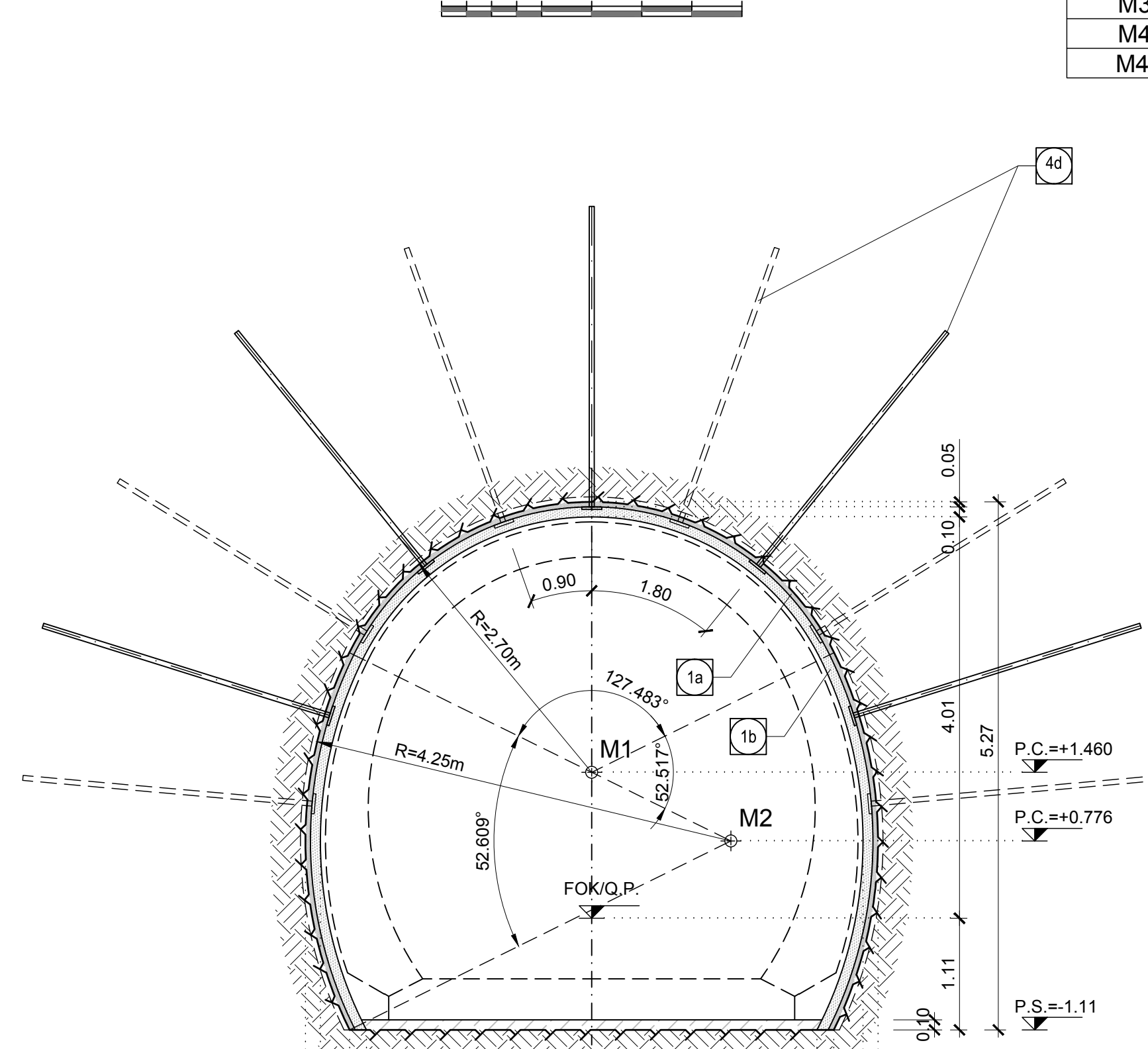


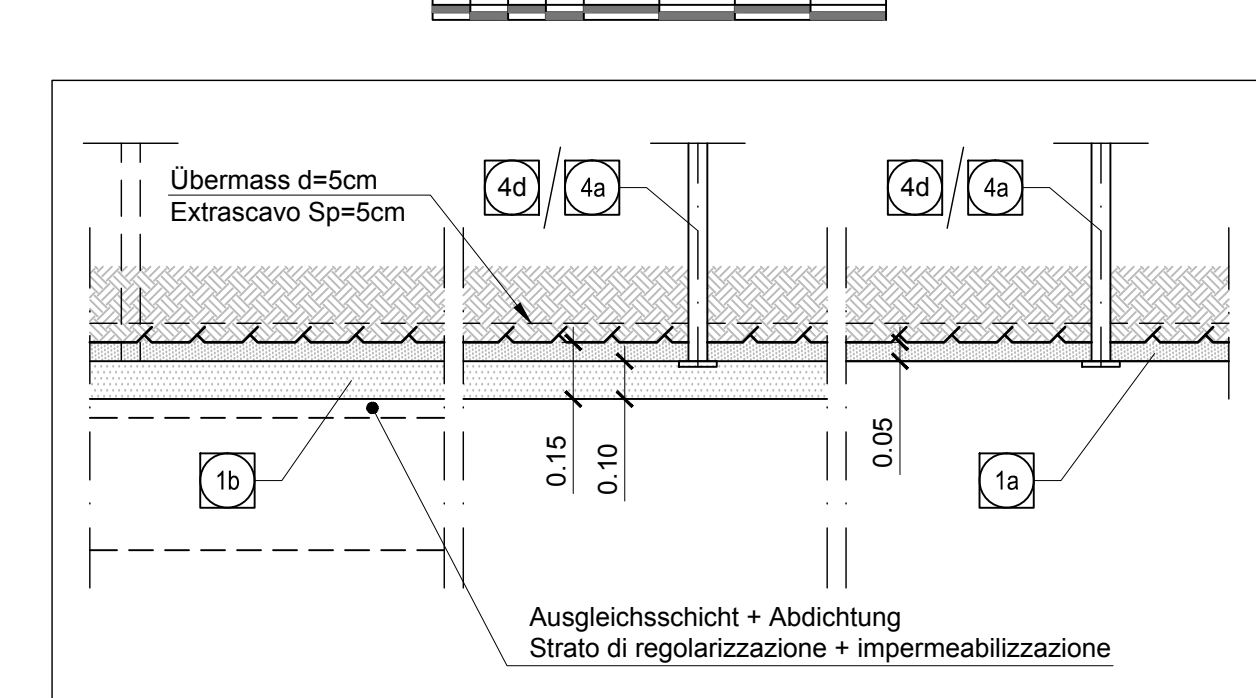
SCHNITT A-A / SEZIONE A-A

(1:50)



DETAIL / PARTICOLARE

(1:20)

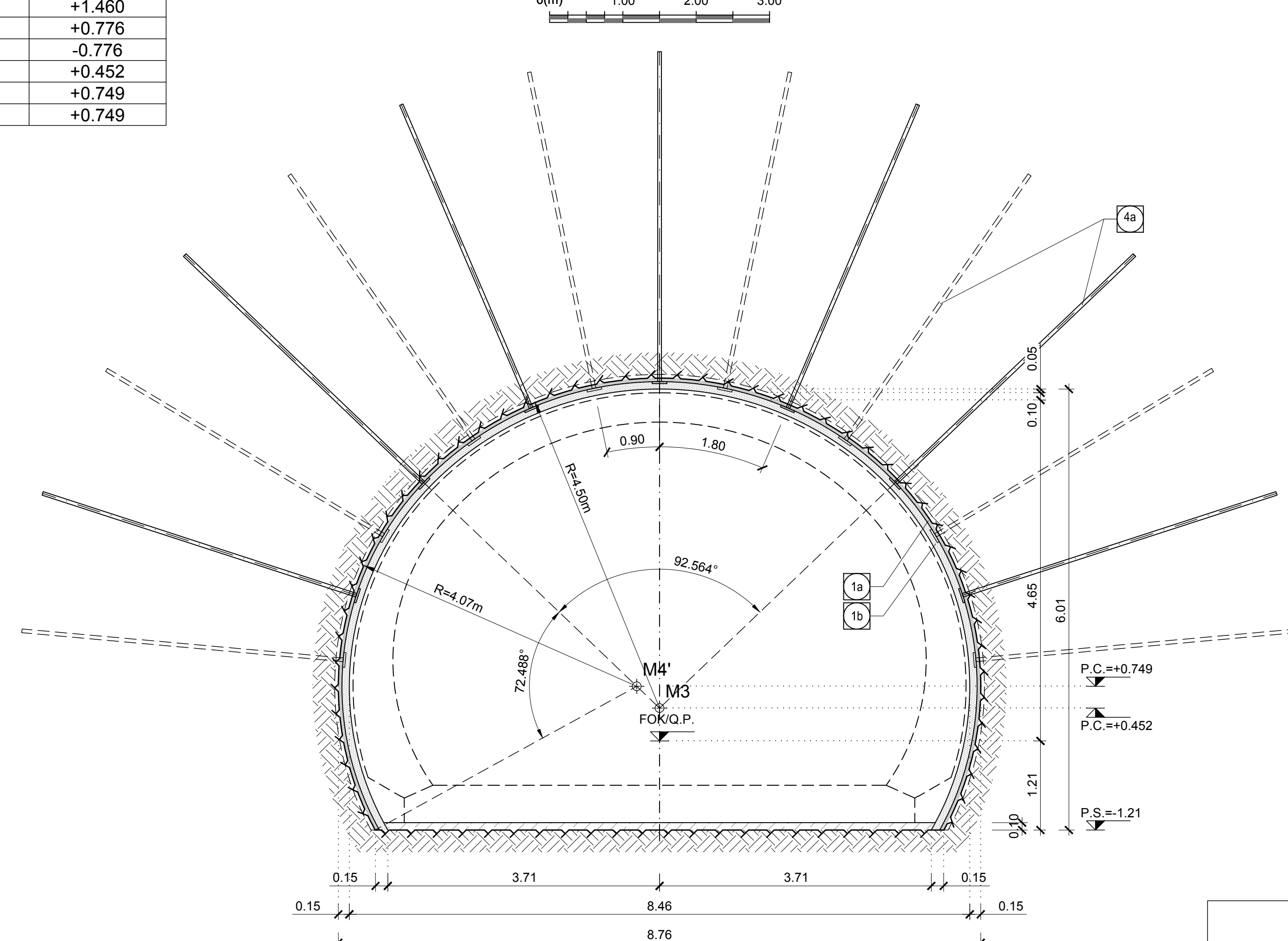


KOORDINATEN / COORDINATE

Table with columns Pkt.Nr./PTNo., X, Y. Coordinates for points M1, M2, M3, M4, M4'.

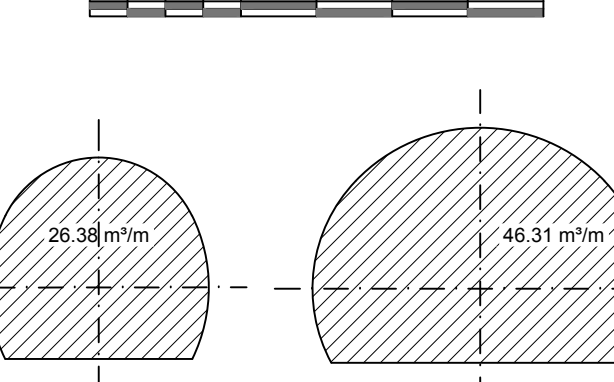
SCHNITT B-B / SEZIONE B-B

(1:50)



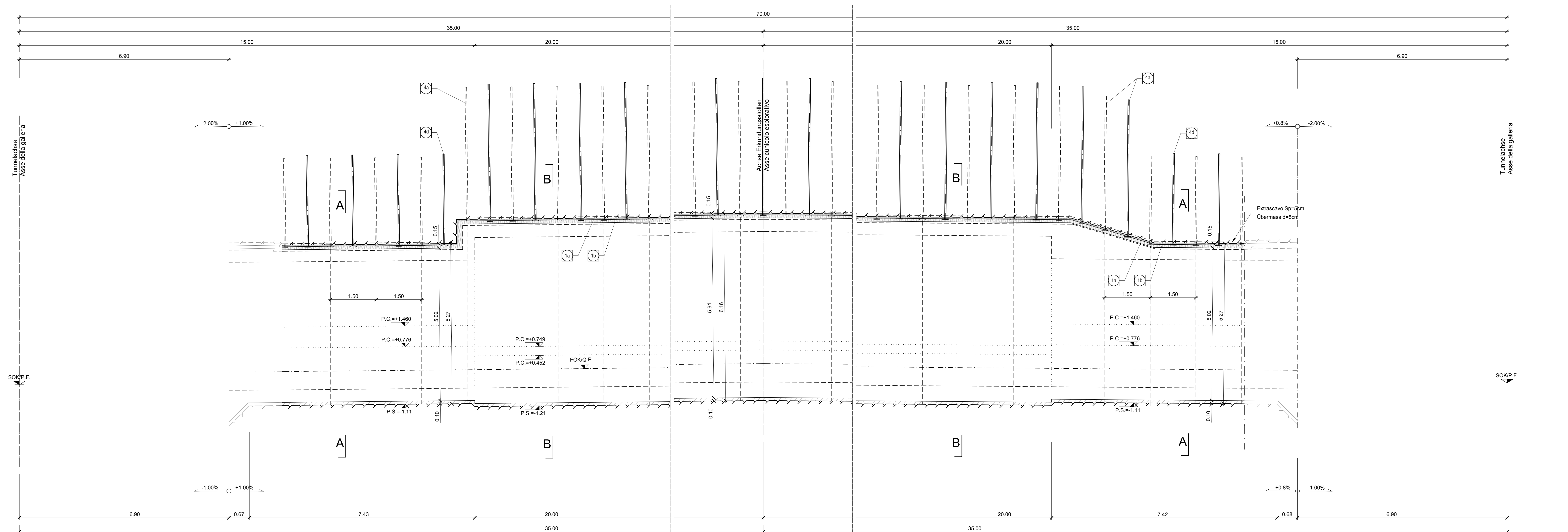
AUSBRUCHVOLUMEN (mit Übermaß)

VOLUME DI SCAVO (incluso sovrascavo)



LÄNGSABLAUF / SVILUPPO LONGITUDINALE

(1:50)



ÖSTRÖHRE / GALLERIA EST Gleis 1 / Binario dispari

WESTRÖHRE / GALLERIA OVEST Gleis 2 / Binario pari

NOTE

- NOTE regarding concrete class, reinforcement, and construction details.

FASI ESECUTIVE

- EXECUTION PHASES: 1. SPRESOVORBEREITUNG, 2. BETONIEREN, 3. AUFTRAGEN, 4. EINBAU.

MATERIALEIGENSCHAFTEN UND TECHNISCHE SPEZIFIKATIONEN

- TECHNICAL SPECIFICATIONS for concrete, reinforcement, and other materials.

LEGENDE / LEGENDA

- LEGEND symbols for center lines, iron levels, and reinforcement.

NOTE

- NOTE regarding concrete class, reinforcement, and construction details.

FASI ESECUTIVE

- EXECUTION PHASES: 1. SCAVO A PIENA SEZIONE, 2. REALIZZAZIONE CHIODATURE, 3. REALIZZAZIONE STRATO.

CARATTERISTICHE DEI MATERIALI E SPECIFICHE TECNICHE

- TECHNICAL SPECIFICATIONS for concrete, reinforcement, and other materials.

Table with columns: Dimensioni, Schicht, Beschreibung, etc. for different tunnel sections.

M / SCALA 1:50



Referenzdokumente / Documenti di riferimento

Table listing reference documents and their descriptions.

Bearbeitungsstand / Stato di elaborazione

Table showing the status of work with columns for revision, changes, and dates.

Project information block including logos, titles, dates, and contact details.