

SCHNITT A-A / SEZIONE A-A

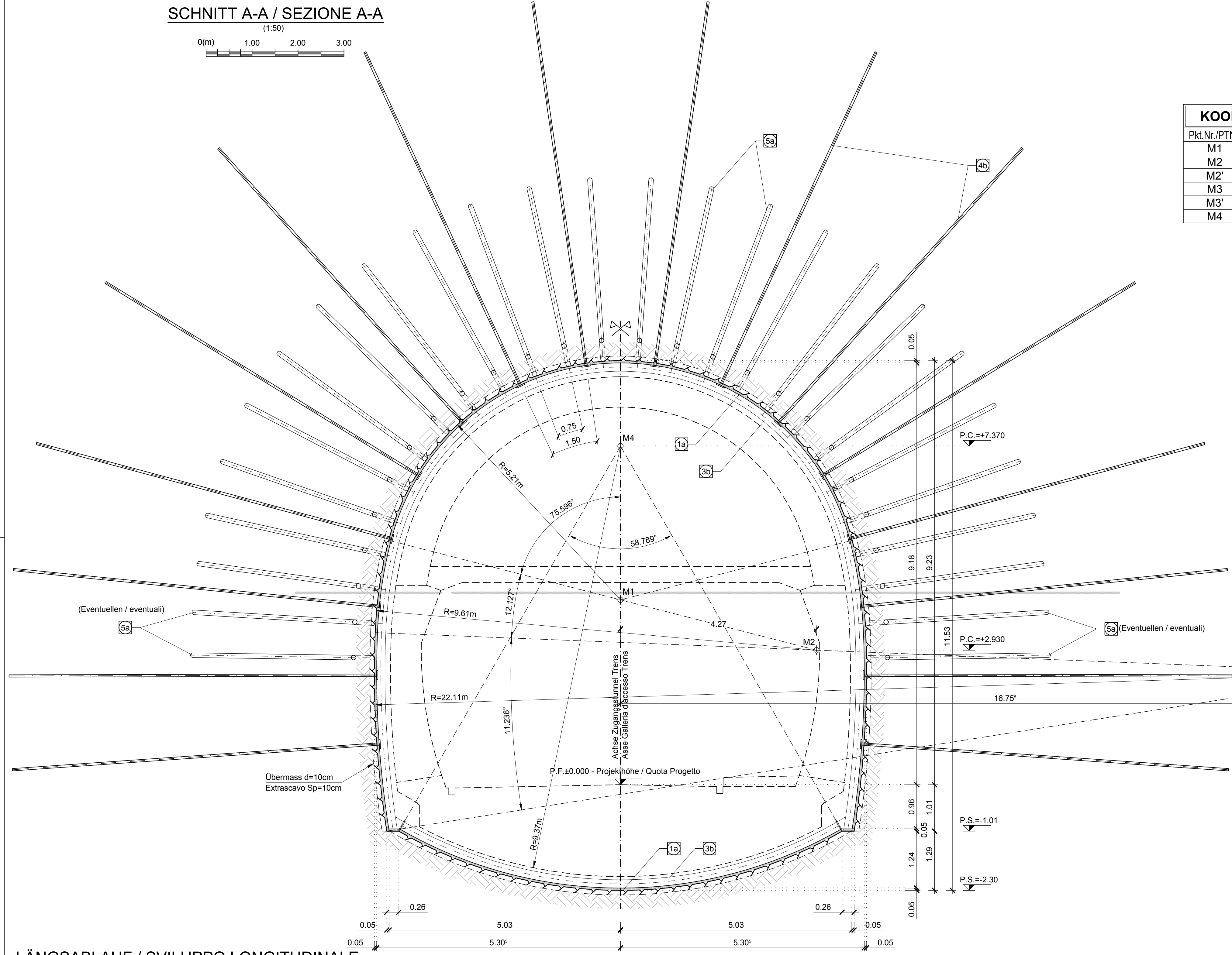
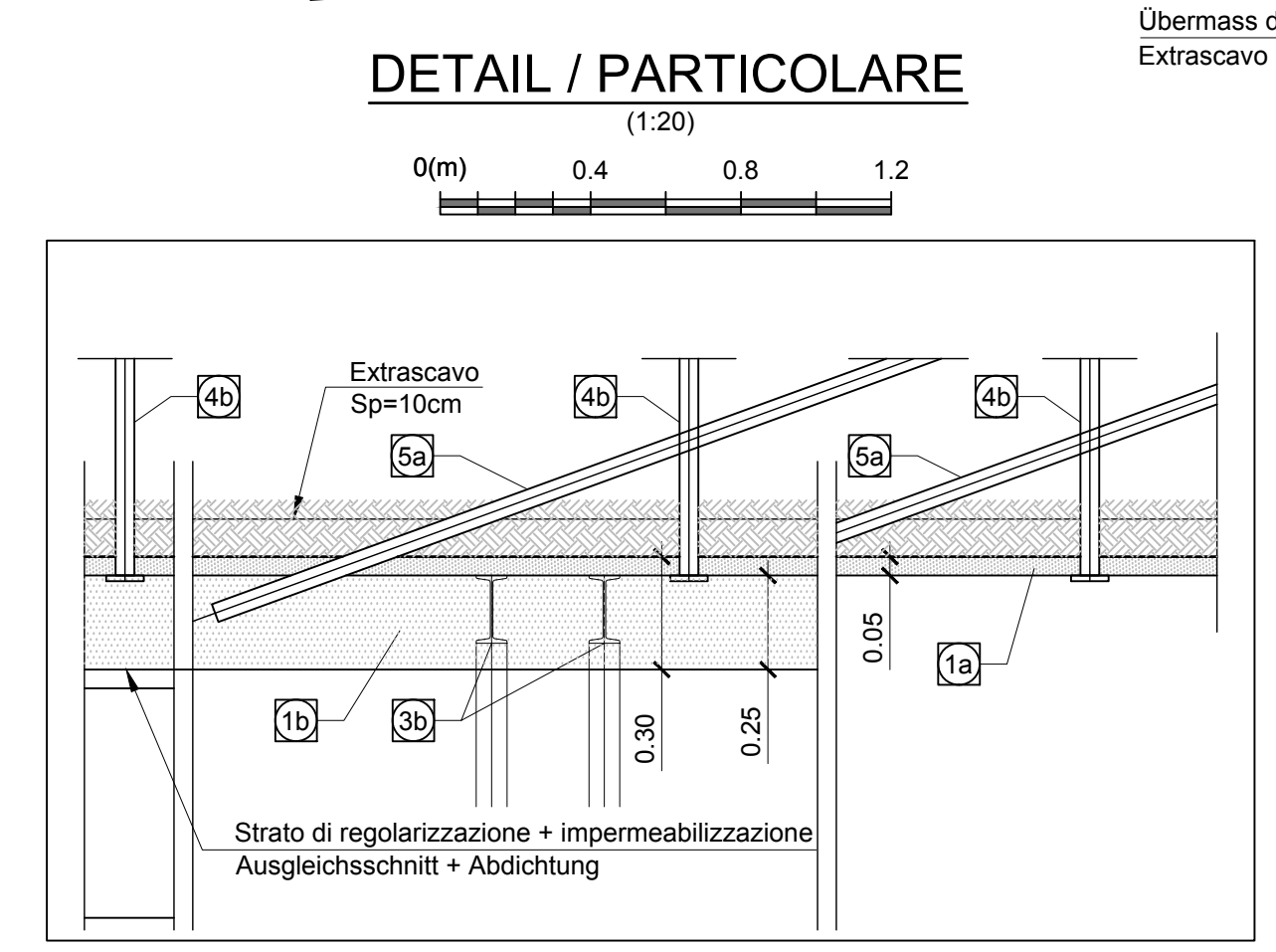
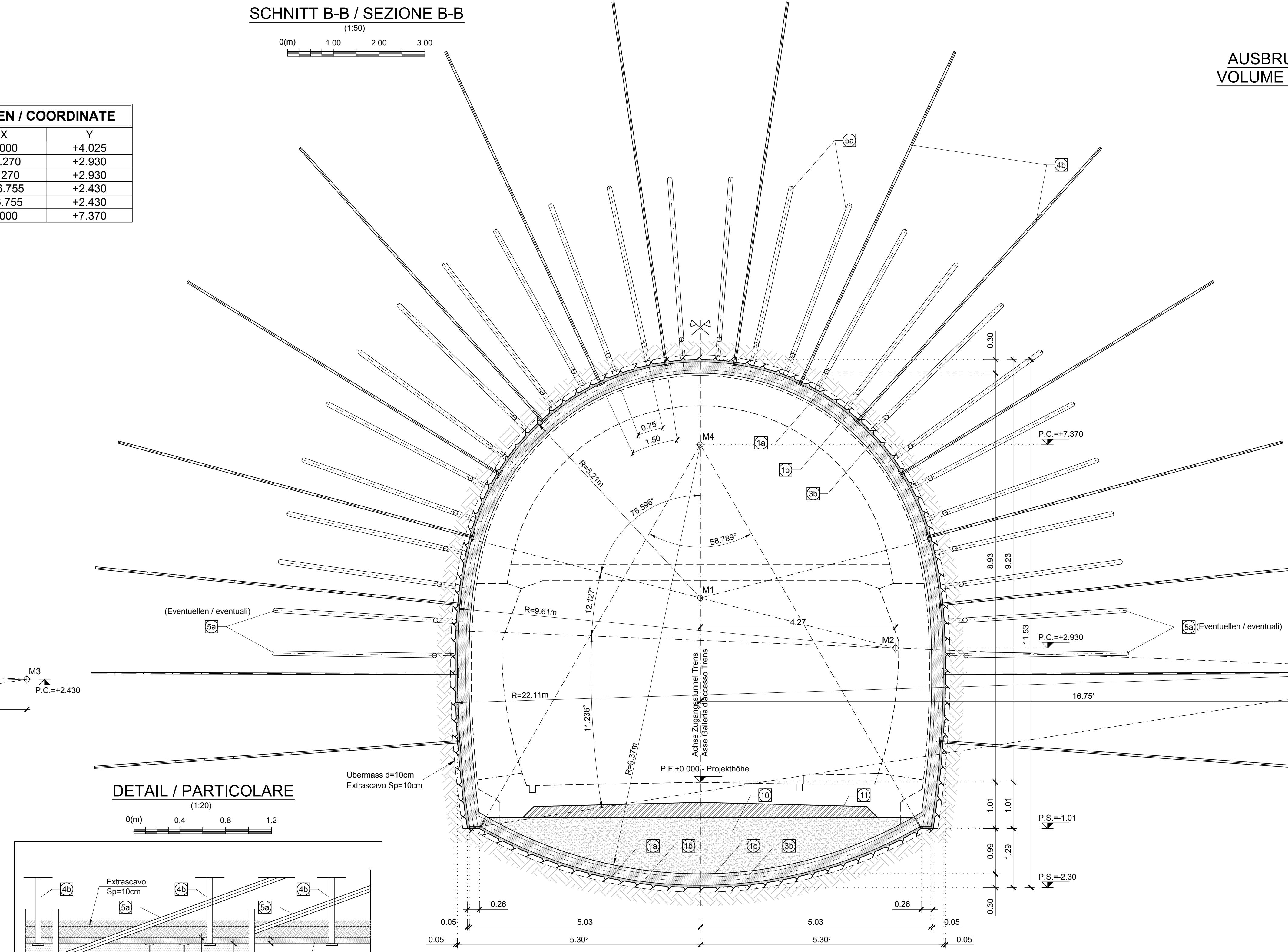
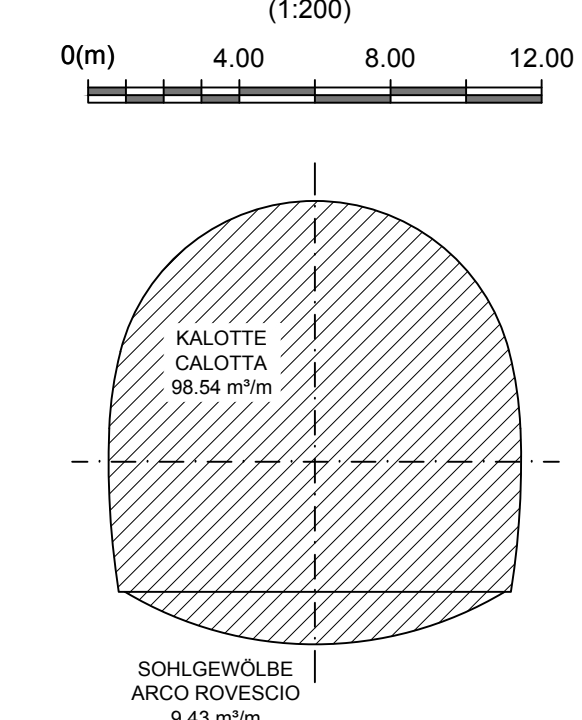


Table with 3 columns: Pk.Nr./PTNo., X, Y. It lists coordinates for points M1 through M4.

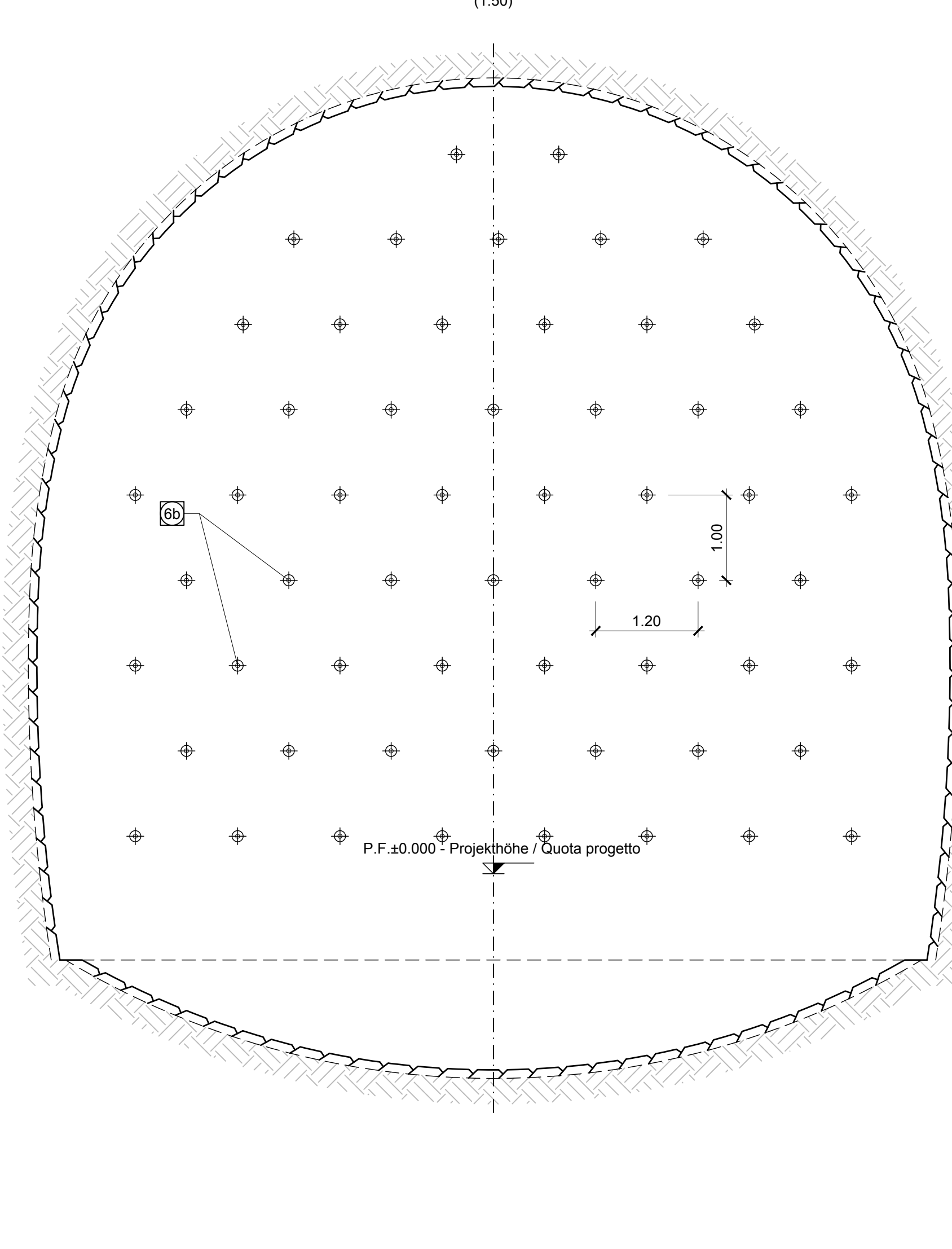
SCHNITT B-B / SEZIONE B-B



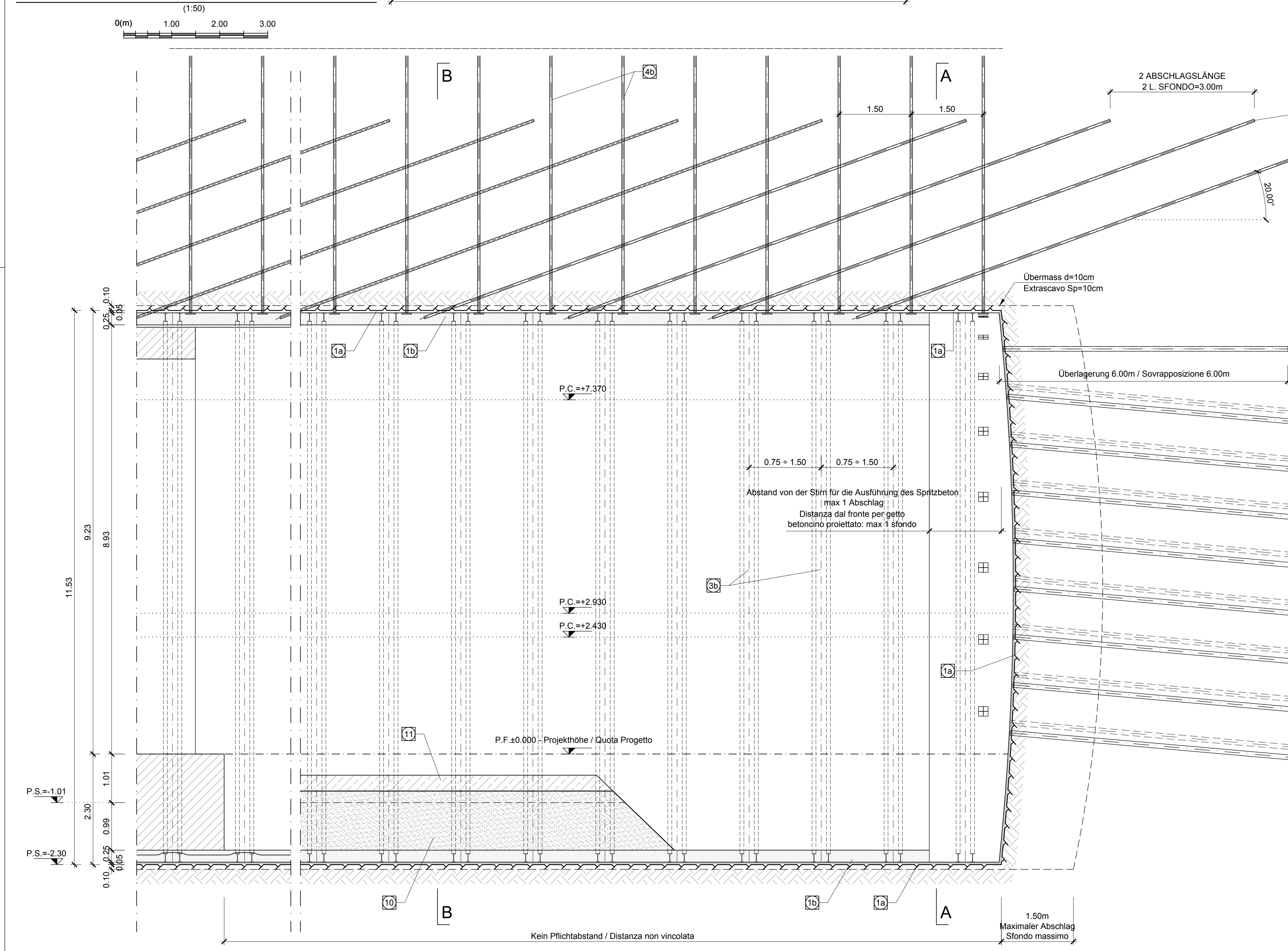
AUSBRUCHVOLUMEN (mit Übermaß) / VOLUME DI SCAVO (incluso sovrascavo)



SCHNITT A-A MIT SCHEMA DER VERGÜTUNG DER ORTSBRUST / SEZIONE A-A CON SCHEMA TRACCIAMENTO INTERVENTI DI CONSOLIDAMENTO AL FRONTE



LÄNGSABLAUF / SVILUPPO LONGITUDINALE



BEMERKUNGEN

Das Bild zeigt die... (Detailed technical notes regarding the tunnel construction and reinforcement details.)

BAUPHASEN

- 1. Mögliche Vortriebsverfahren... (List of construction phases and methods.)

MATERIALEIGENSCHAFTEN UND TECHNISCHE SPEZIFIKATIONEN

- 1. SPRITZBETON MIT STAHLFASERN... (Technical specifications for materials and construction.)

LEGENDE / LEGENDA

P.C. = FURNE DER KRUEFTENLINIE / PIANO DEL CENTRO... (Legend for symbols and abbreviations.)

NOTE

La sezione tipo... (Additional technical notes and observations.)

FASI ESECUTIVE

- 1. ESECUZIONE INTERVENTI IN AVANZAMENTO... (List of execution phases.)

CARATTERISTICHE DEI MATERIALI E SPECIFICHE TECNICHE

- 1. BENTONITE PROGETTATA FIBROFORINFORZATA... (Technical specifications for materials.)

ANKERPLAN / PIANTA ANCORAGGI

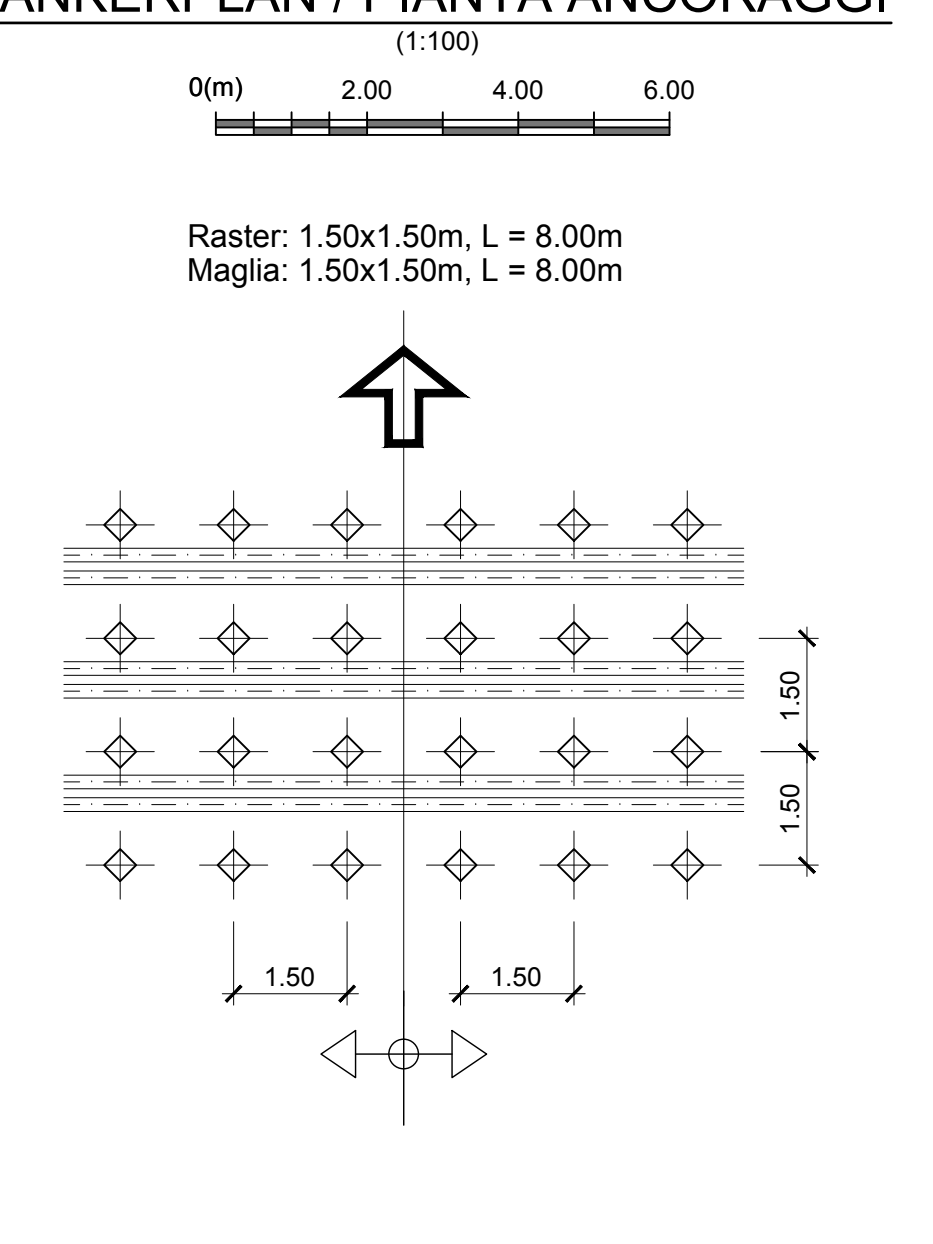


Table with 3 columns: Document ID, Title, and Description. Lists reference documents.

Table with 4 columns: Revision, Date, Author, and Description. Lists revision history.

Project information block including logos of BBT, RT4P, and other stakeholders, along with project name and contact details.