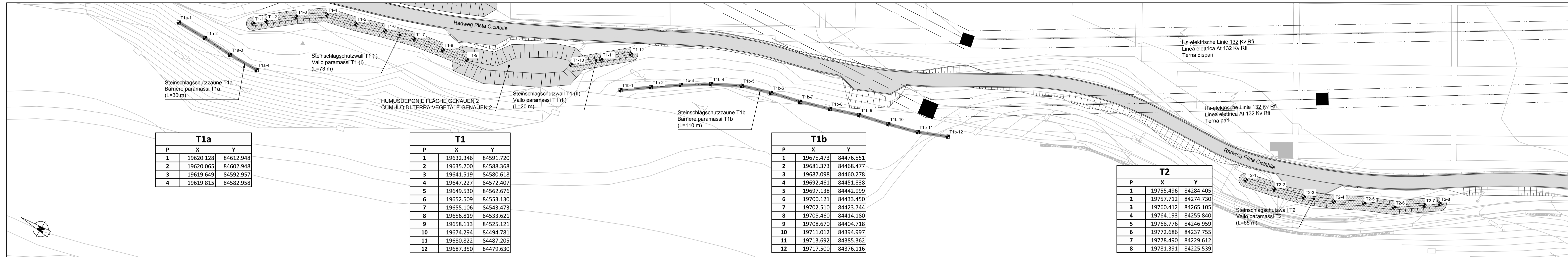


TRASSIERUNG STEINSCHLAGSCHUTZMAßNAHMEN
TRACCIAMENTO OPERE PARAMASSI

(1:500)
0(m) 10.00 20.00 30.00



T1a		
P	X	Y
1	19620.128	84612.948
2	19620.065	84602.948
3	19619.649	84592.957
4	19619.815	84582.958

T1		
P	X	Y
1	19632.346	84591.720
2	19635.200	84588.368
3	19641.519	84580.618
4	19647.227	84572.407
5	19649.530	84562.676
6	19652.509	84553.130
7	19655.106	84543.473
8	19656.819	84533.621
9	19658.113	84525.121
10	19674.294	84494.781
11	19680.822	84487.205
12	19687.350	84479.630

T1b		
P	X	Y
1	19675.473	84476.551
2	19681.373	84468.477
3	19687.098	84460.278
4	19692.461	84451.838
5	19697.138	84442.999
6	19700.121	84433.450
7	19702.510	84423.744
8	19705.460	84414.184
9	19708.670	84404.718
10	19711.012	84394.997
11	19713.692	84385.362
12	19717.500	84376.116

T2		
P	X	Y
1	19755.496	84284.405
2	19757.712	84274.730
3	19760.412	84265.105
4	19764.193	84255.840
5	19768.776	84246.959
6	19772.686	84237.755
7	19778.490	84229.612
8	19781.391	84225.539

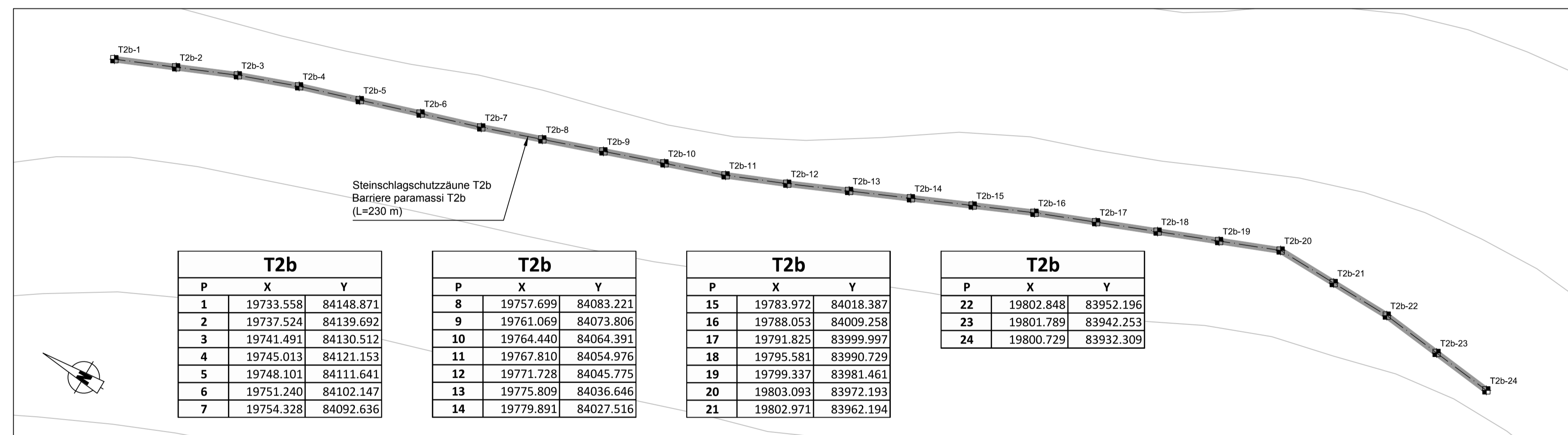
Bezugssystem / Sistema di riferimento:
BBT_TM_WGS84

Referenzdokumente
Documenti di riferimento

Referenzdokumente	Documenti di riferimento
02_H61_DB_300_KLP_D0700_51100	Übersichtsplan Materialdeponie Genauen 2 Phase 2
02_H61_ST_410_XLS_D0700_54321	Materialdeponie Genauen 2: Längsprofil neuer Fahrradweg
02_H61_ST_410_KRP_D0700_54322	Materialdeponie Genauen 2: Regiprofil neuer Fahrradweg
02_H61_ST_410_KRQ_D0700_54323	Materialdeponie Genauen 2: Querschnitte Fahrradweg und Kanal (Blatt 1/3)
02_H61_DB_300_KTB_D0700_51015	Technischer Bericht Materialdeponien
02_H61_BS_410_KLP_D0700_54135	Lageplan Zufahrtsstrasse Baustelle Genauen 2

Bearbeitungsstand
Stato di elaborazione

Revision	Änderungen	Verantwortlicher	Datum
20	Projektvollständigung und Umsetzung der Verbesserungen aus dem Prüfverfahren / Completamento progetto e recepimento struttura	Merini	04.12.2014
21	Abgabe für Ausschreibung / Emissione per Appalto	Merini	30.01.2015

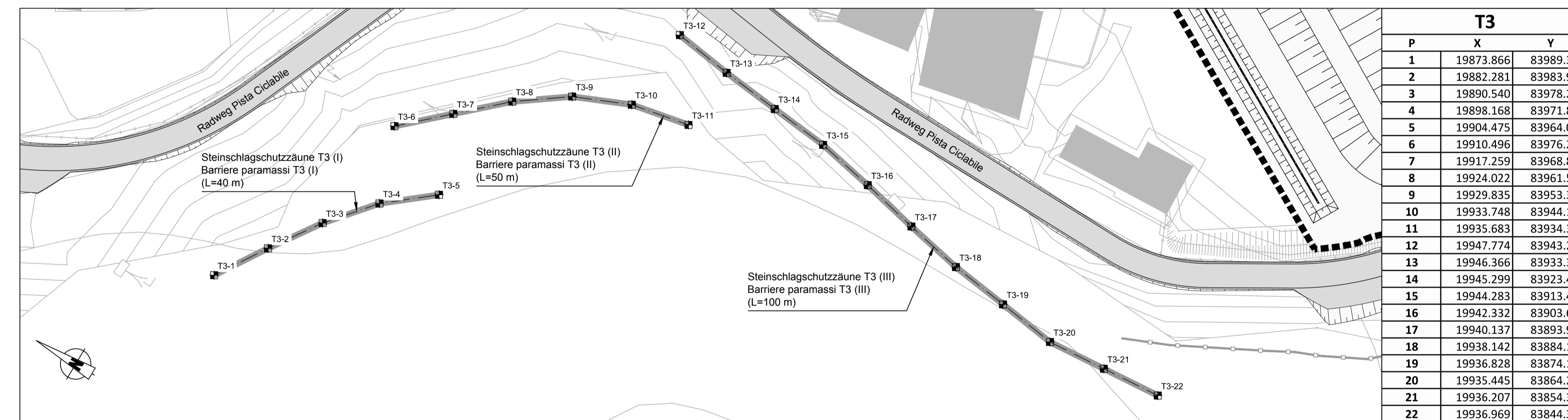


T2b		
P	X	Y
1	19733.558	84148.871
2	19737.524	84139.692
3	19741.491	84130.512
4	19745.013	84121.153
5	19748.101	84111.641
6	19751.240	84102.147
7	19754.328	84092.636

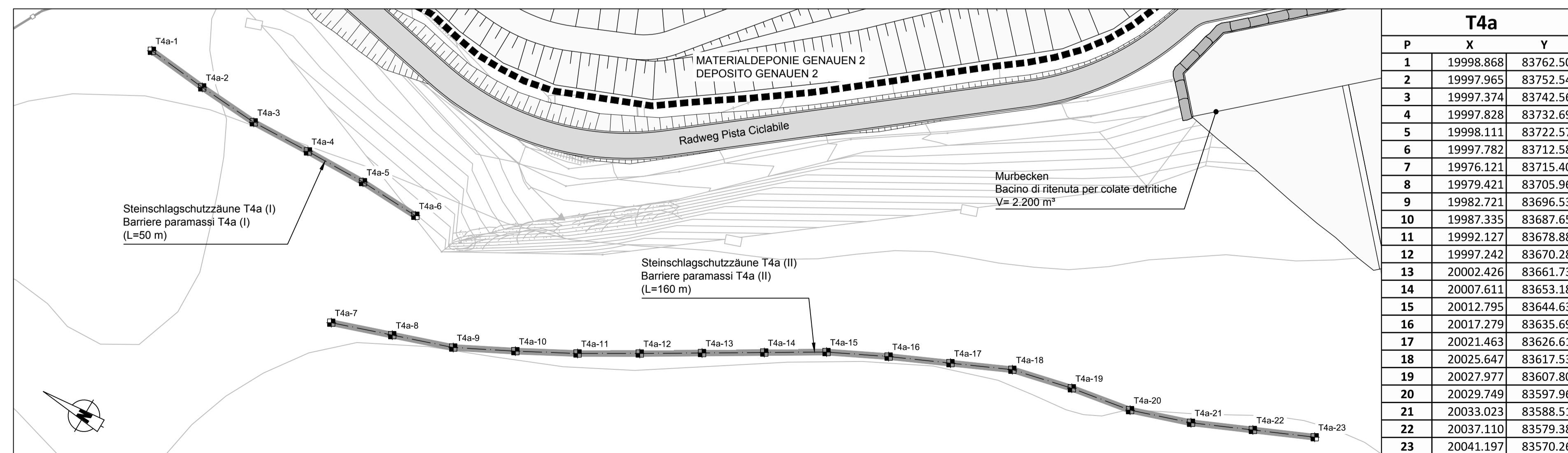
T2b		
P	X	Y
8	19757.699	84083.221
9	19761.069	84073.806
10	19764.440	84064.391
11	19767.810	84054.976
12	19771.728	84045.775
13	19775.809	84036.646
14	19779.891	84027.516

T2b		
P	X	Y
15	19783.972	84018.387
16	19788.053	84009.258
17	19791.825	83999.997
18	19795.581	83990.729
19	19799.337	83981.461
20	19803.093	83972.193
21	19802.971	83962.194

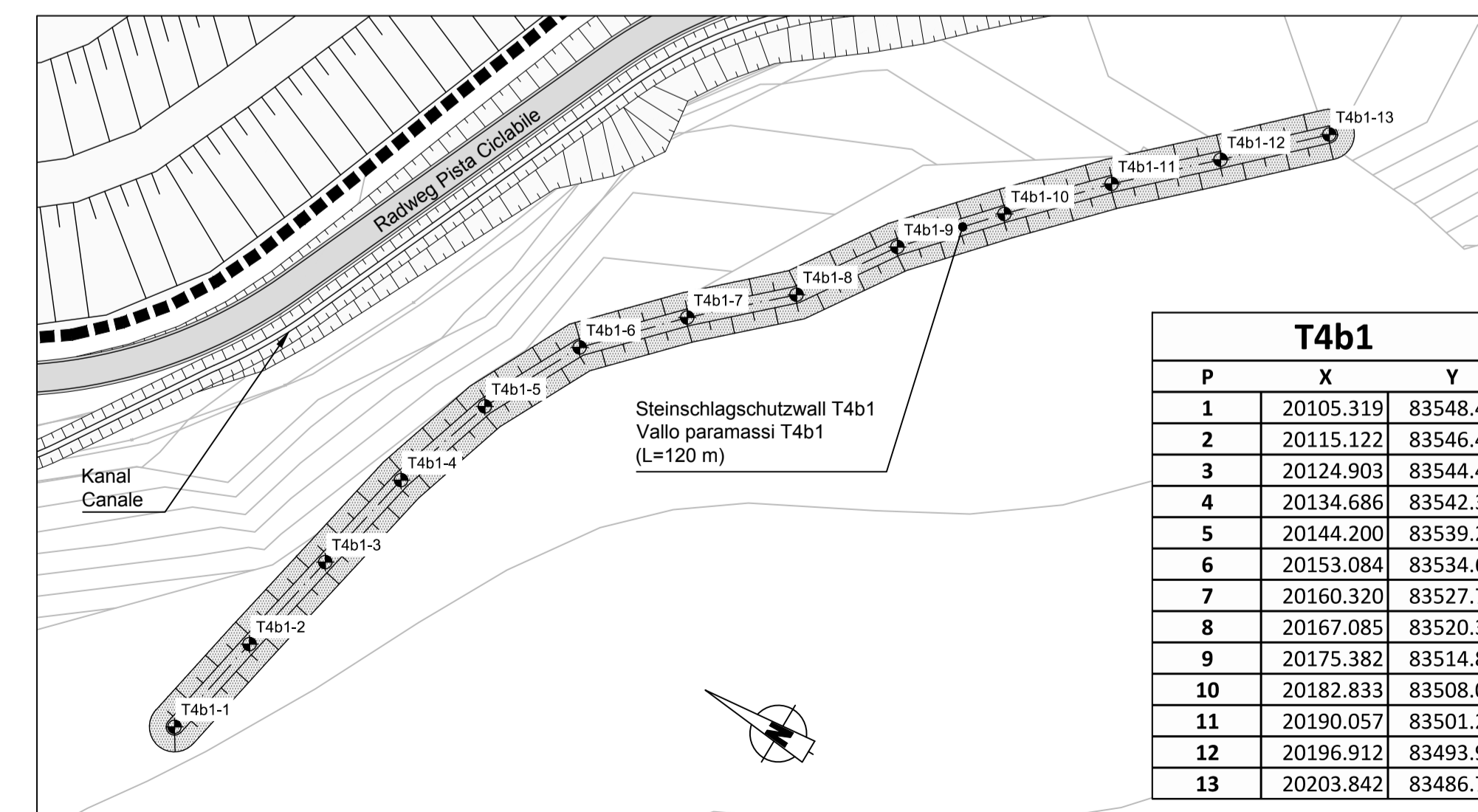
T2b		
P	X	Y
22	19802.848	83952.196
23	19801.789	83942.253
24	19800.729	83932.309



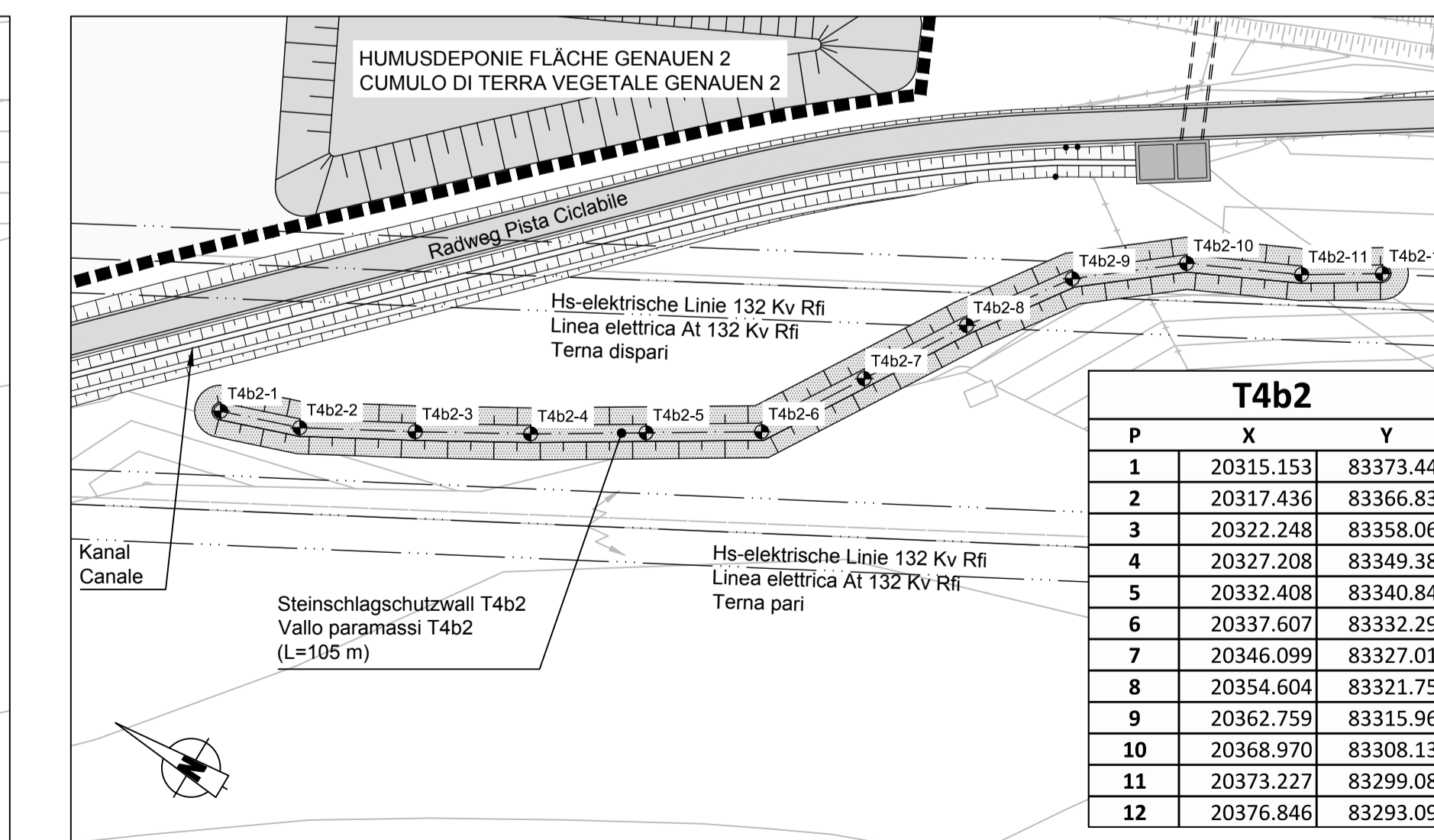
T3		
P	X	Y
1	19873.866	83989.329
2	19882.281	83983.927
3	19890.540	83978.289
4	19898.168	83971.823
5	19904.475	83964.062
6	19910.496	83976.255
7	19917.259	83968.899
8	19924.022	83961.533
9	19929.835	83953.996
10	19933.748	83944.193
11	19935.683	83934.382
12	19947.774	83943.257
13	19946.366	83933.357
14	19945.299	83923.414
15	19944.283	83913.466
16	19942.332	83903.658
17	19940.137	83893.902
18	19938.142	83884.103
19	19936.828	83874.189
20	19935.445	83864.285
21	19936.207	83854.315
22	19936.969	83844.344



T4a		
P	X	Y
1	19998.868	83762.504
2	19997.965	83752.545
3	19997.374	83742.563
4	19997.828	83732.697
5	19998.111	83722.577
6	19997.782	83712.583
7	19996.121	83715.409
8	19997.421	83705.969
9	19982.721	83696.530
10	19987.335	83687.657
11	19992.127	83678.881
12	19997.242	83670.287
13	20002.426	83661.736
14	20007.611	83653.185
15	20012.795	83644.634
16	20017.279	83635.696
17	20021.463	83626.613
18	20025.647	83617.530
19	20027.977	83607.806
20	20029.749	83597.964
21	20033.023	83588.515
22	20037.110	83579.388
23	20041.197	83570.262



T4b1		
P	X	Y
1	20105.319	83548.449
2	20115.122	83546.474
3	20124.903	83544.403
4	20134.686	83542.332
5	20144.200	83539.252
6	20153.084	83534.662
7	20160.320	83527.759
8	20167.085	83520.390
9	20175.382	83514.812
10	20182.833	83508.093
11	20190.057	83501.227
12	20196.912	83493.946
13	20203.842	83486.737



T4b2		
P	X	Y
1	20315.153	83373.449
2	20317.436	83366.832
3	20322.248	83358.055
4	20327.208	83349.382
5	20332.408	83340.840
6	20337.607	83332.298
7	20346.099	83327.017
8	20354.604	83321.757
9	20362.759	83315.969
10	20368.970	83308.132
11	20373.227	83299.084
12	20376.846	83293.092

Mit Beteiligung der Europäischen Union aus dem Haushalt der Transportschlüssigen Verkehrsinfrastruktur Vorhaben
Opera finanziata con la partecipazione dell'Unione Europea attraverso il bilancio delle reti di trasporto trans-europee

BRENNER BASISTUNNEL
Ausführungsbau
Potenziamento asse ferroviario Monaco - Verona
GALLERIA DI BASE DEL BRENNERO
Progettazione esecutiva

D0700: Bauhof Mauls 2-3 D0700: Lottio Mules 2-3

Projektarbeit: WBS
Baustelle Genauen II: Cantiere Genauen II
Dokumententyp: Tipo documento
Lagenplan: Planimetria
Titel: Titolo
Materialdeponie Genauen 2: Deposito Genauen 2:
Trassierung Steinschlagschutzmaßnahmen: Tracciamento opere paramassi

Generalektor / Responsabile integrazione prestazioni esecutive
Ing. Enrico Maria Pizzardi
Cod. reg. Min. 14/2010

Mandatario	Mandante	Mandante	Mandante
PRO ITER	POÏRY	piniswiss engineers	PIRAGALLI-BASISA INGEGNERIA CIVILE

Fachplaner / progettista specialiste: Ing. Davide Merini
Firma: Pini Swiss

Bearbeitet / Elaborato	Datum / Data	Name / Nome	Gesellschaft / Società
Geprüft / Verificato	30.01.2015	Merini / Gianfranco	Pini Swiss

BBT
Galleria di Base del Brennero
Brenner Basistunnel BBT SE

Projekt / Operazione	Rev. / Stato	Rev. / Data	Status / Documento	Modell / Scala			
02	H61	DB	P02	KLP	D0700	54315	21