

TRASSIERUNG FAHRRADWEG UND KANAL - 3/4
TRACCIAMENTO NUOVA PISTA CICLABILE E CANALE - 3/4

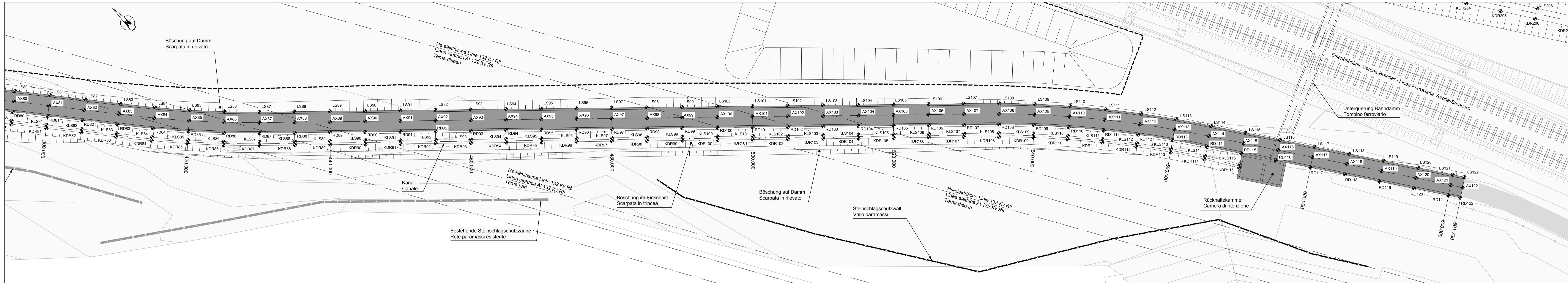
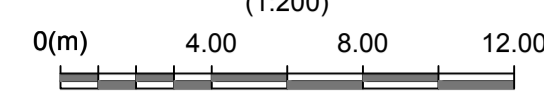
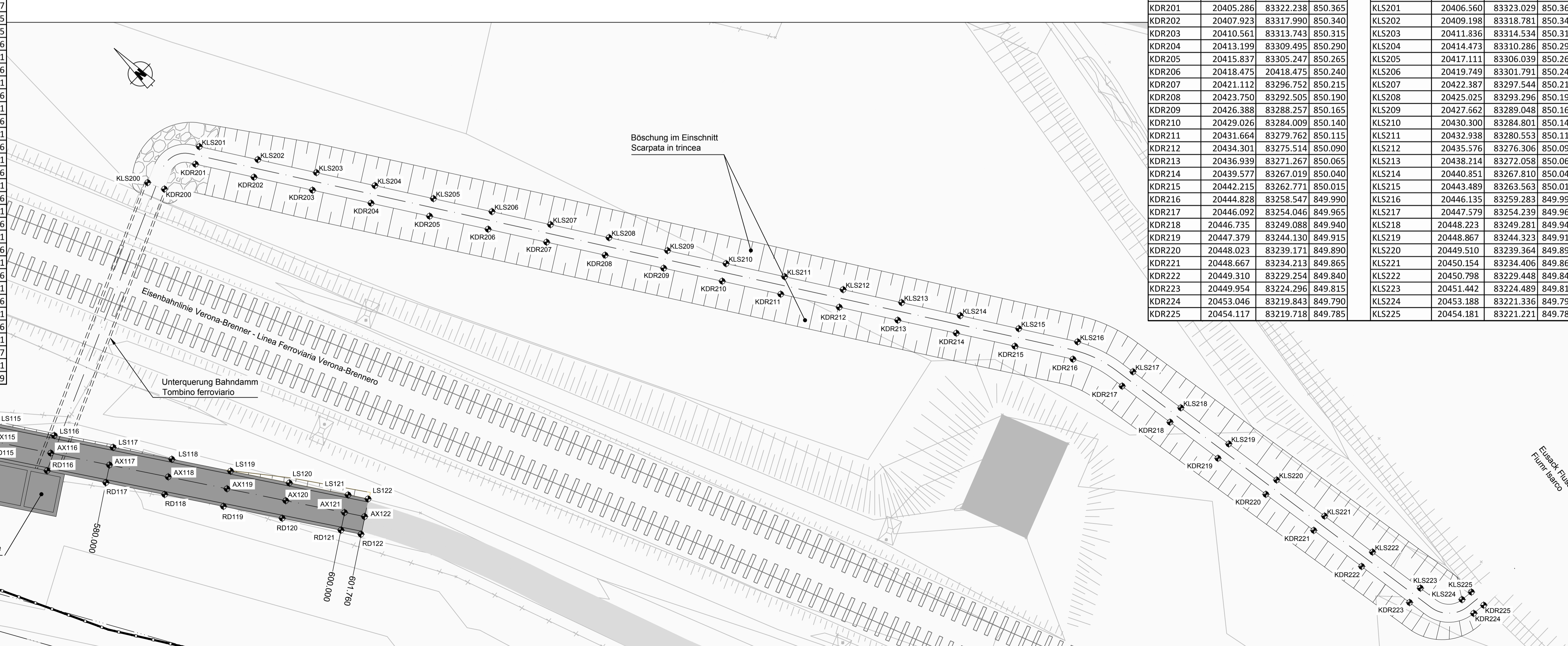
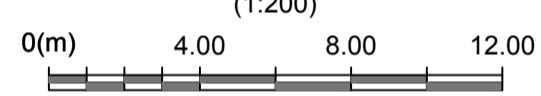


Table with columns P, X, Y, Z for sections AX, RD, LS, KDR, and KLS. It lists stationing points for the proposed cycle path and canal.

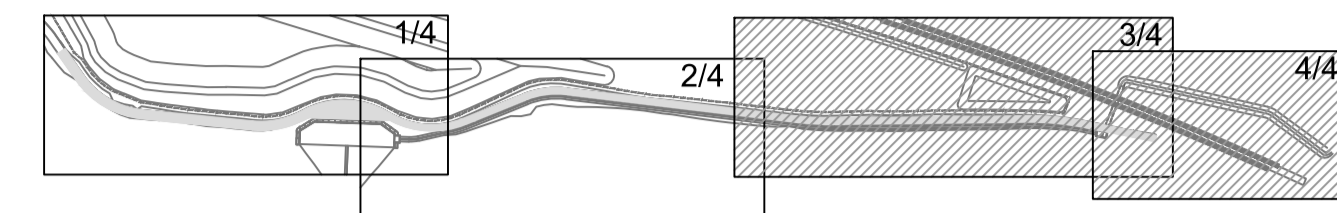
TRASSIERUNG FAHRRADWEG UND KANAL - 4/4
TRACCIAMENTO NUOVA PISTA CICLABILE E CANALE - 4/4



Bezugssystem / Sistema di riferimento:
BBT_TM_WGS84

Table with columns P, X, Y, Z for sections KDR and KLS. It lists stationing points for the proposed cycle path and canal.

SCHLÜSSELPLAN / PIANTA CHIAVE



Referenzdokumente
Documenti di riferimento

Table listing reference documents, including project phases, material depot plans, and technical reports.

Bearbeitungsstand
Stato di elaborazione

Table showing the revision status, including revision numbers, dates, and descriptions of changes.

Ausbau Eisenbahnhöhe München-Verona
BRENNER BASISTUNNEL
Ausführungsplanung
Potenziamenti asse ferroviaria Monaco - Verona
GALLERIA DI BASE DEL BRENNERO
Progettazione esecutiva

Table with columns for project name, location, and planning phase. It lists project details for the Brenner Basistunnel.

Contractor information section including logos for Mandatario (PRO ITER, POYRY), Mandante (pini swiss, PRODUTTORE), and project details like drawing name, date, and scale.