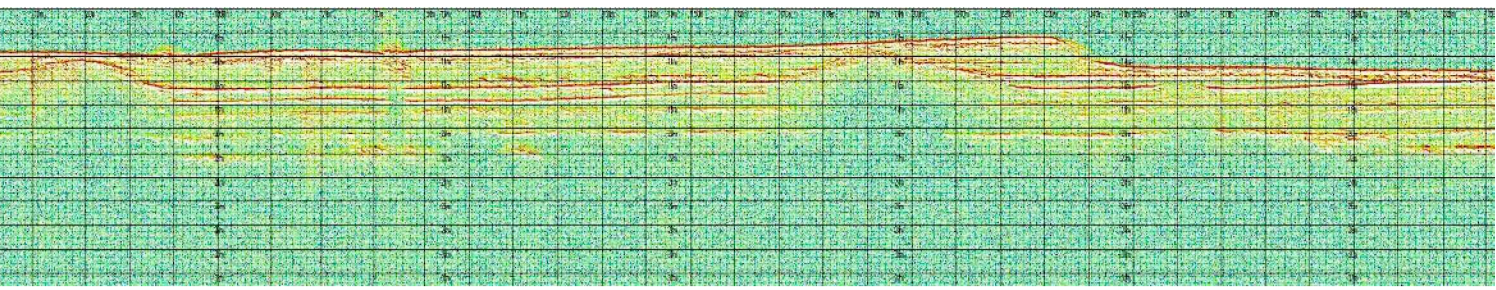
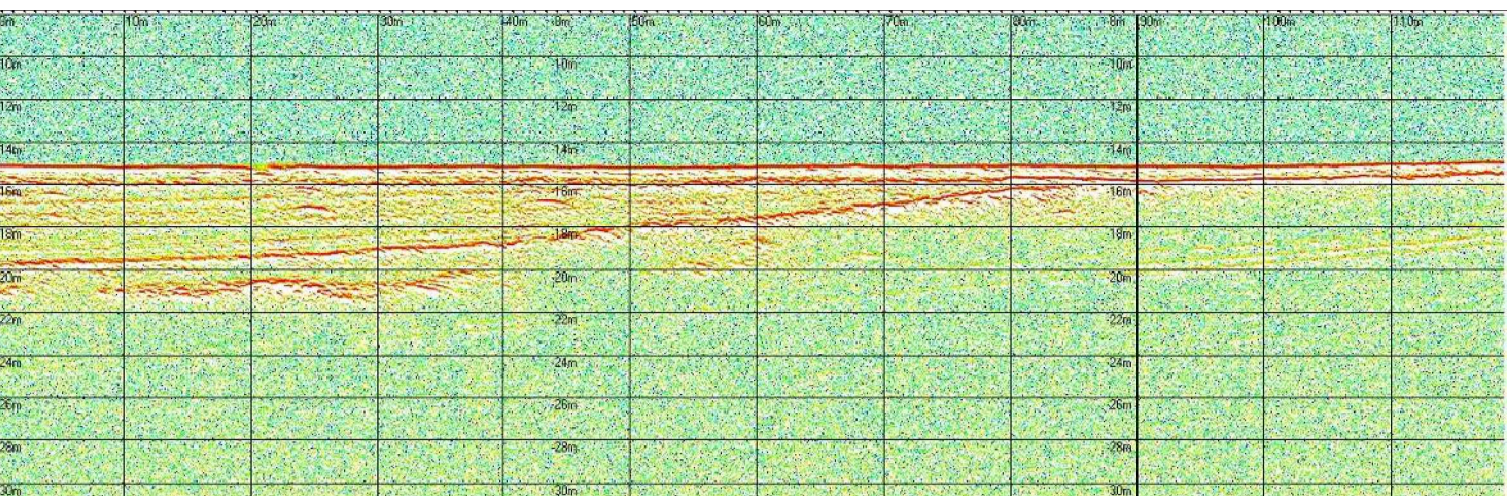


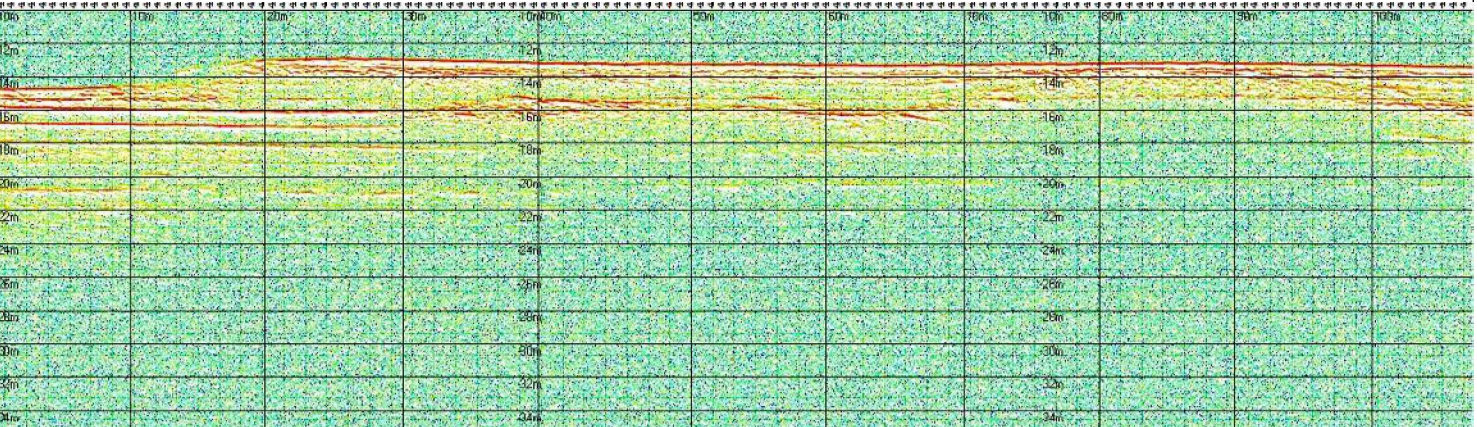
profilo sub-bottom 106



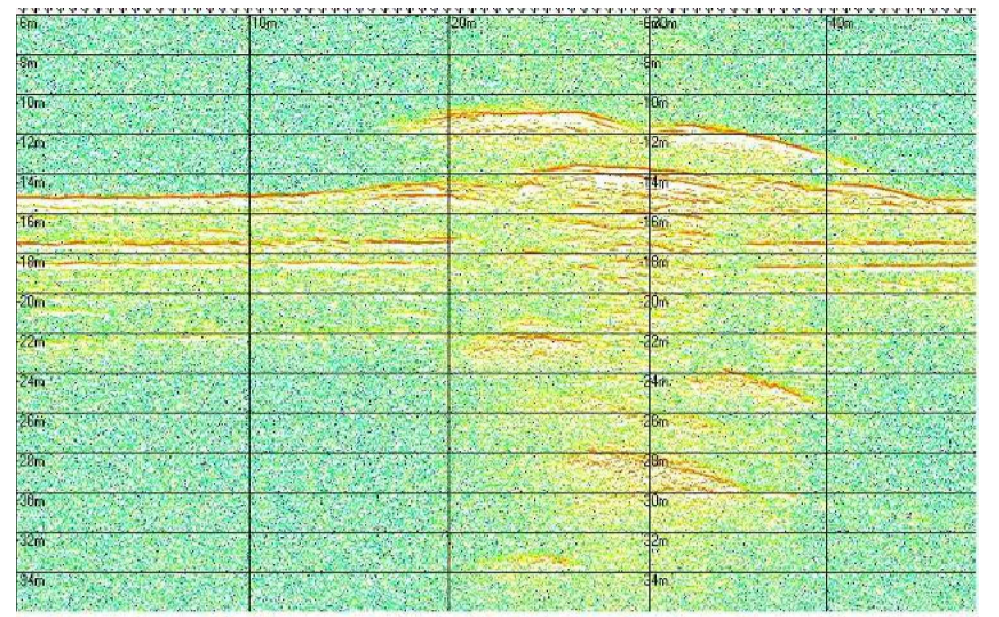
profilo sub-bottom 107



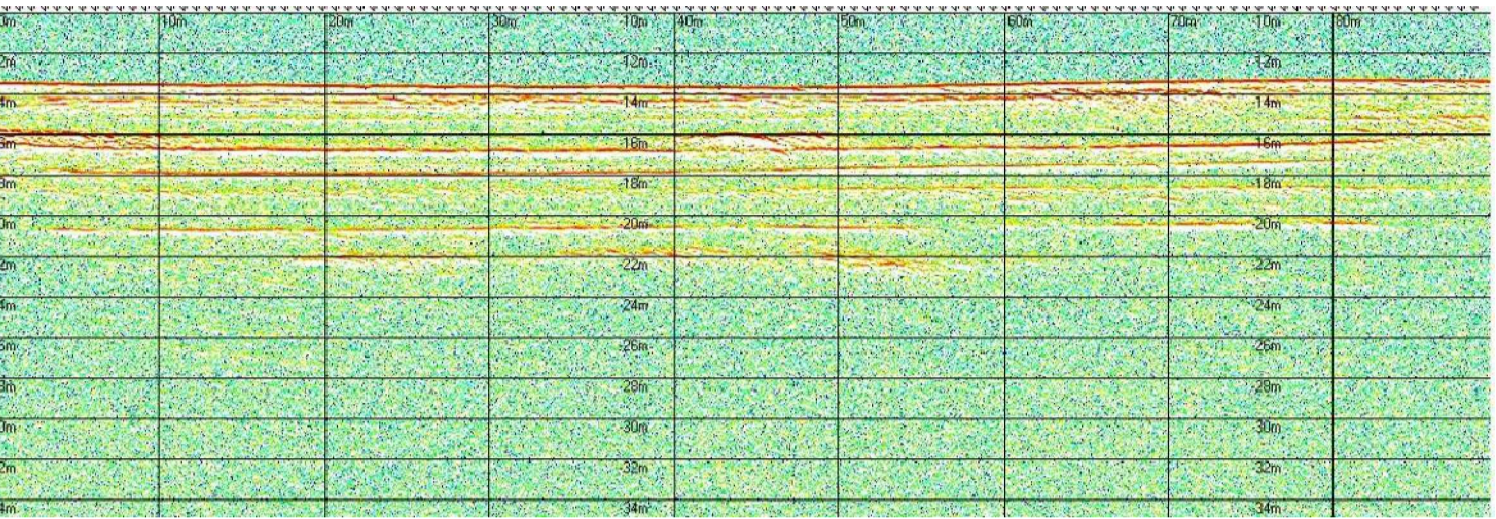
profilo sub-bottom 108



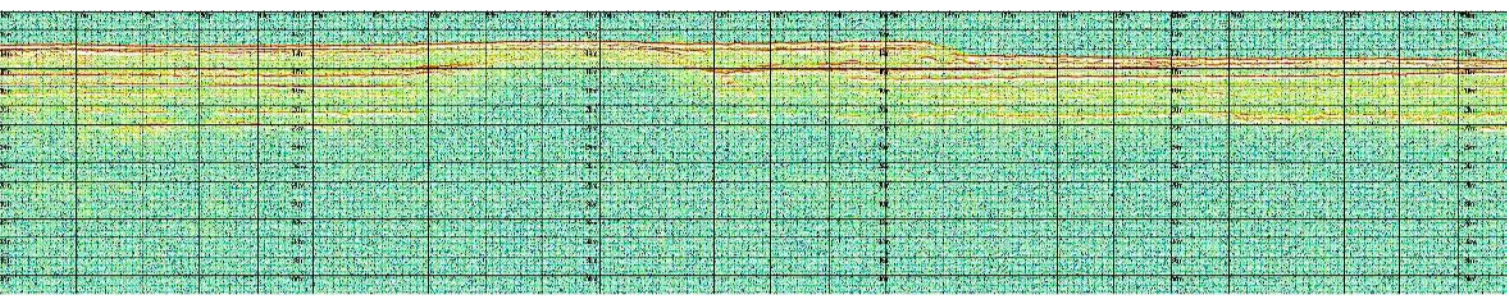
profilo sub-bottom 109



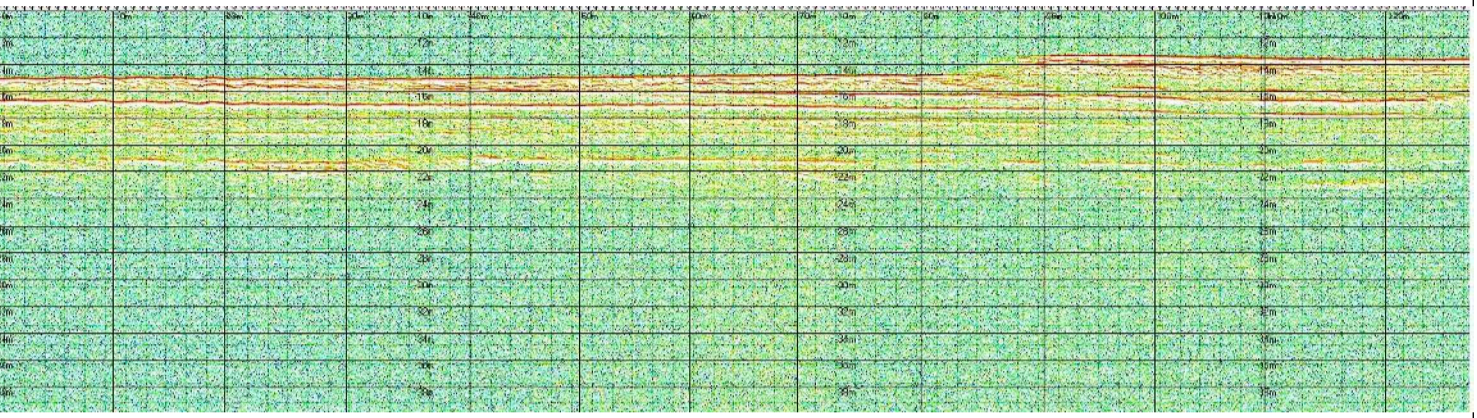
profilo sub-bottom 110



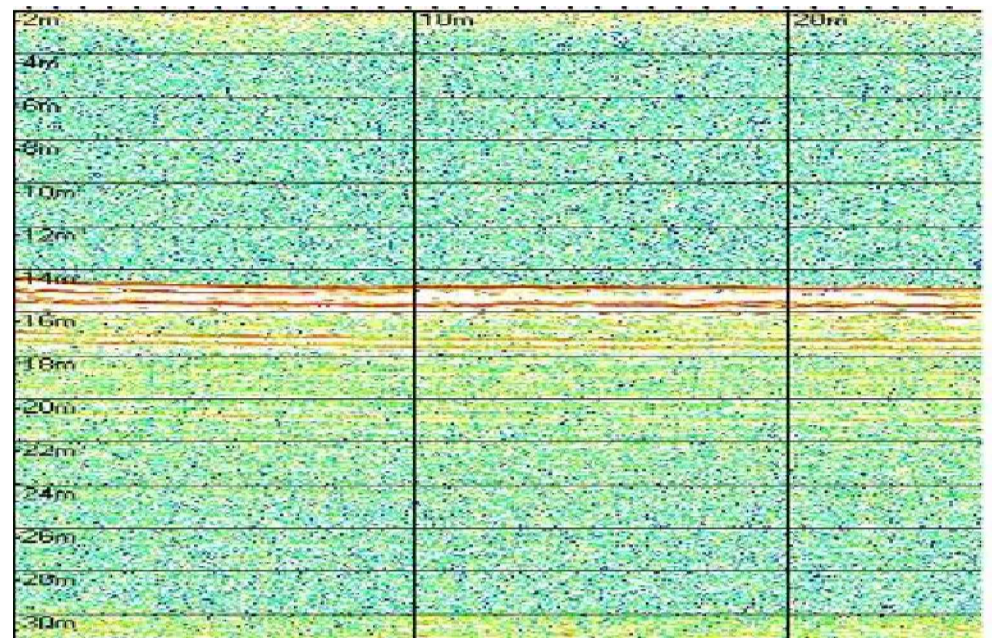
profilo sub-bottom 111



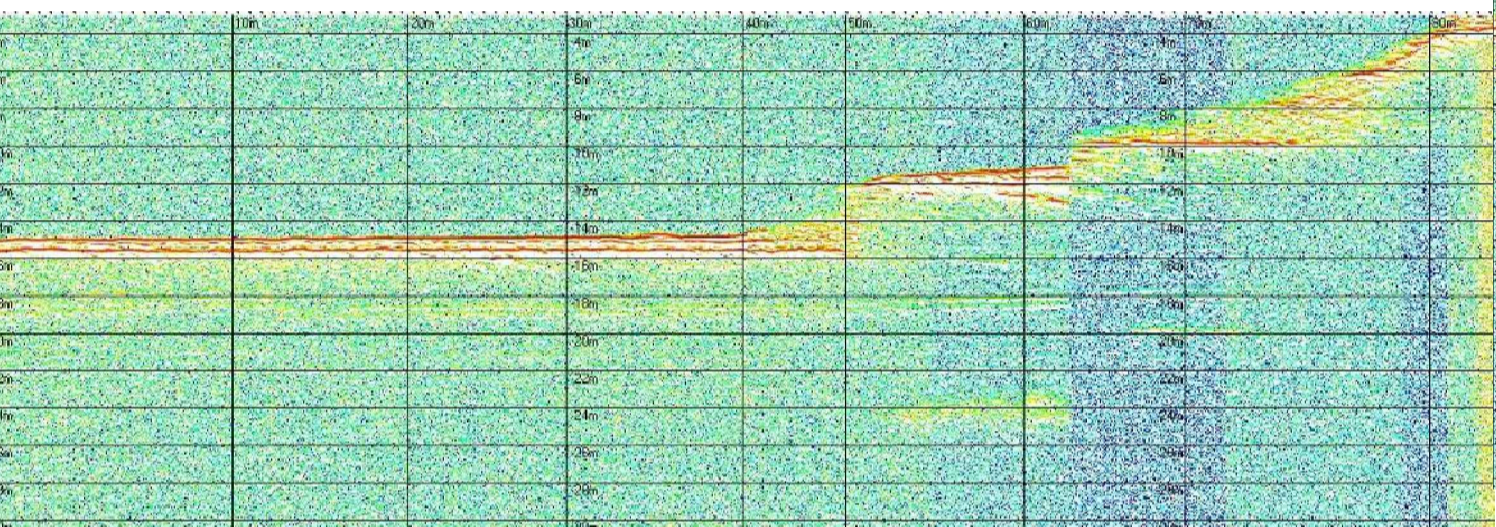
profilo sub-bottom 112



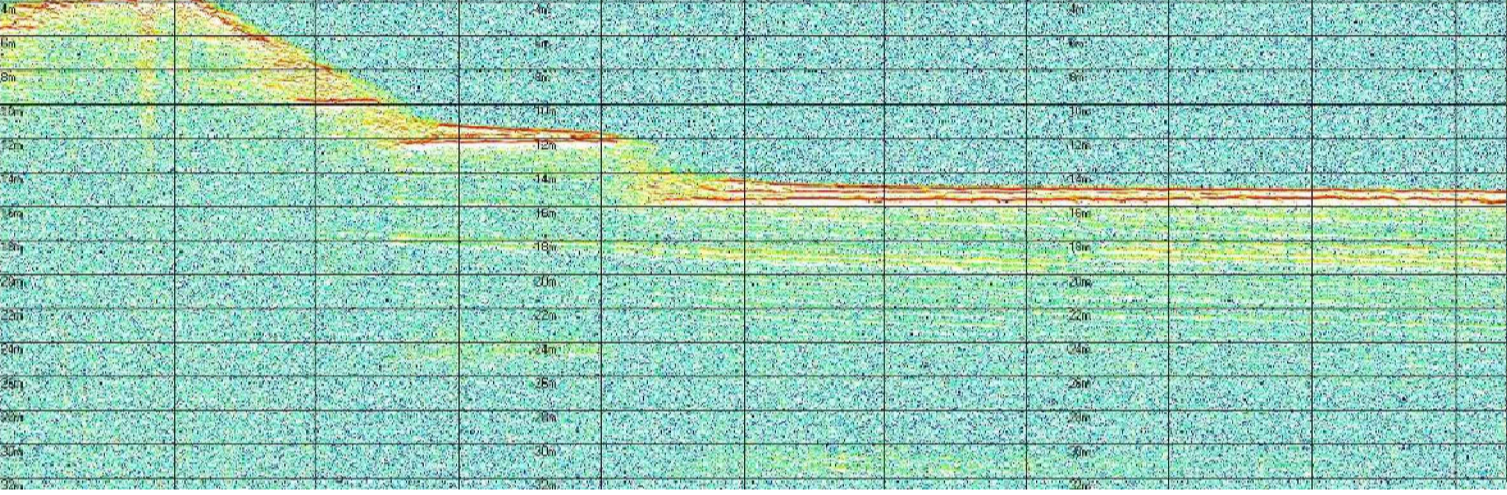
profilo sub-bottom 113



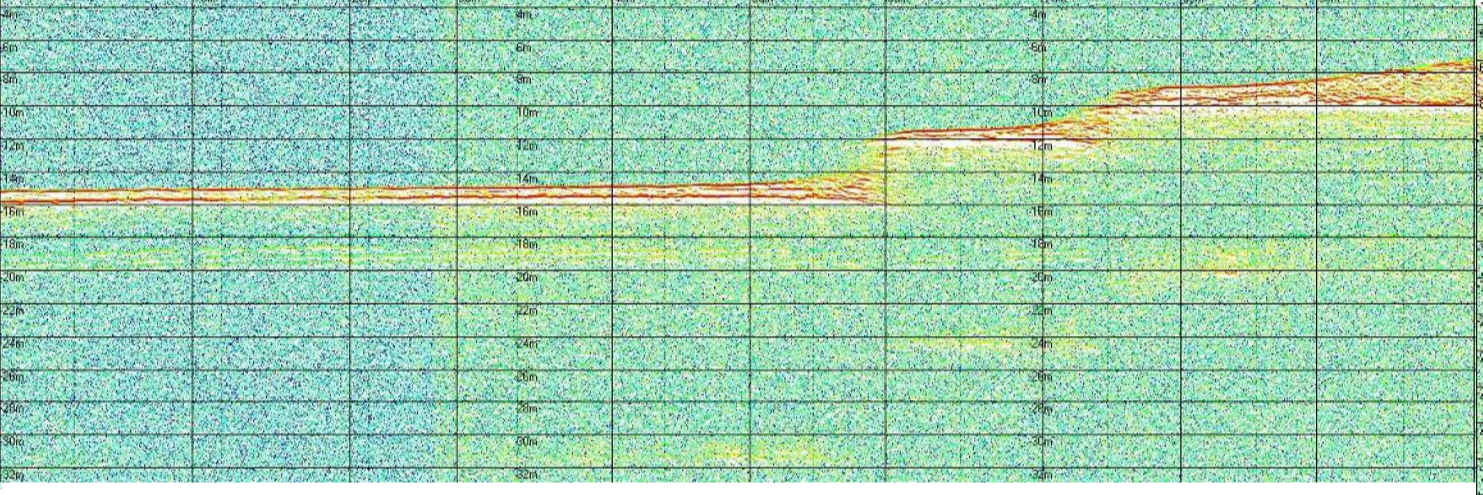
profilo sub-bottom 114



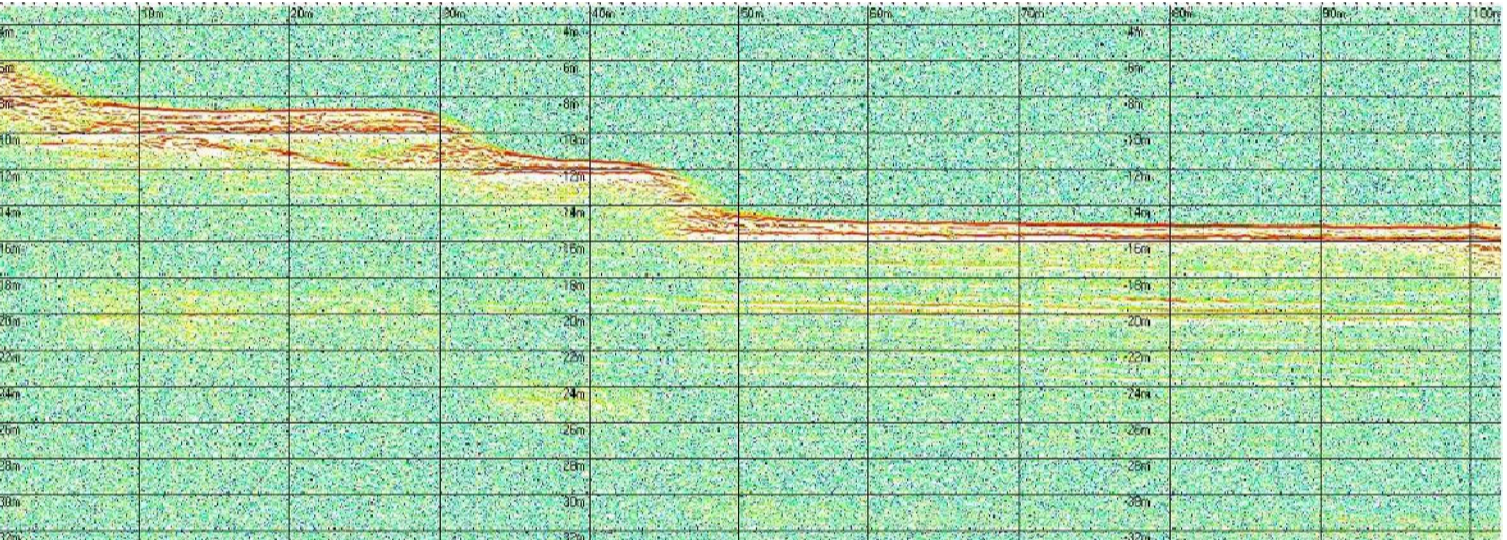
profilo sub-bottom 115



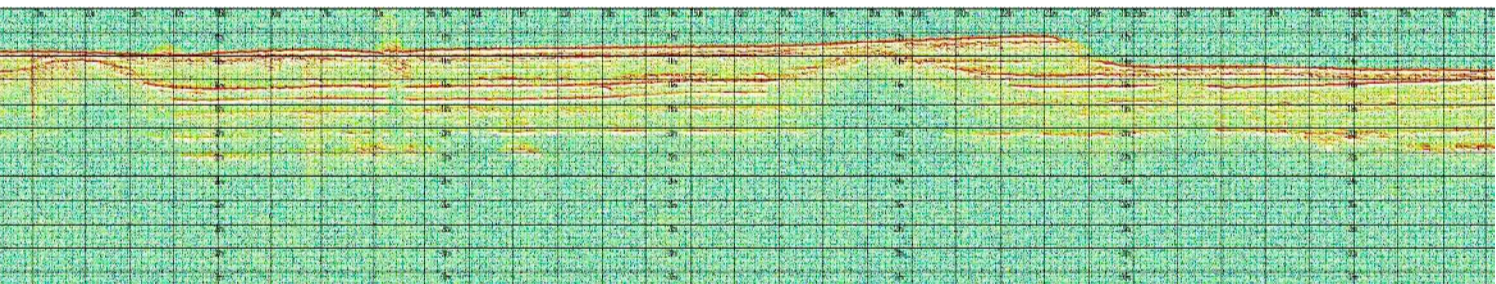
profilo sub-bottom 116



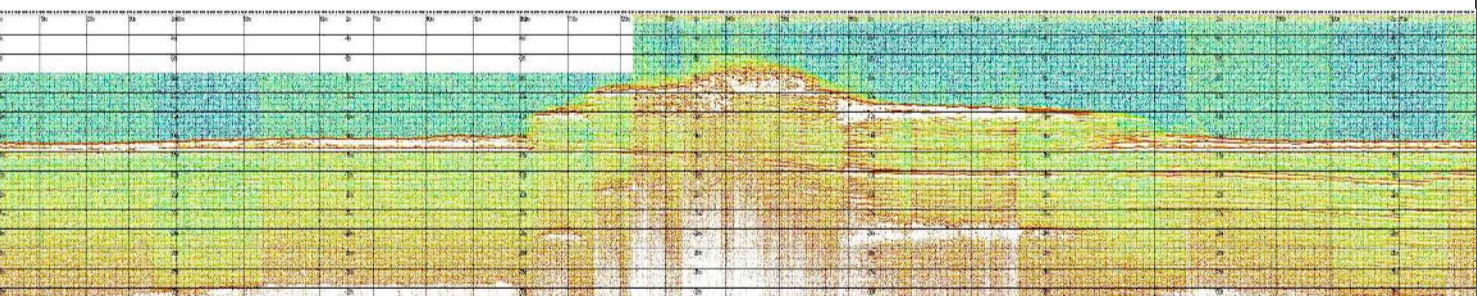
profilo sub-bottom 117



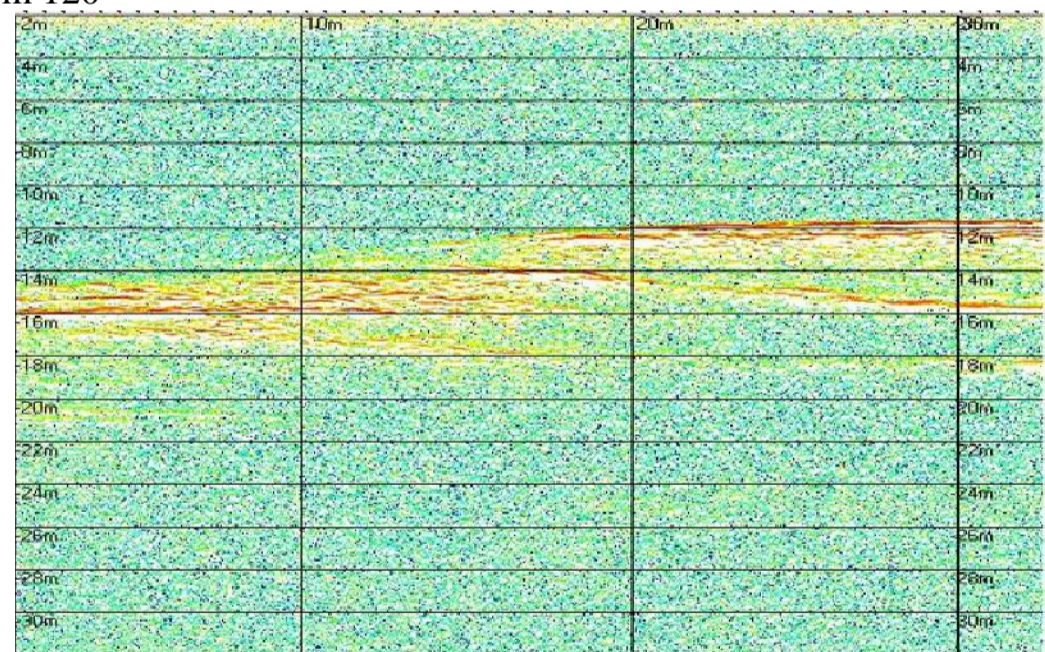
profilo sub-bottom 118



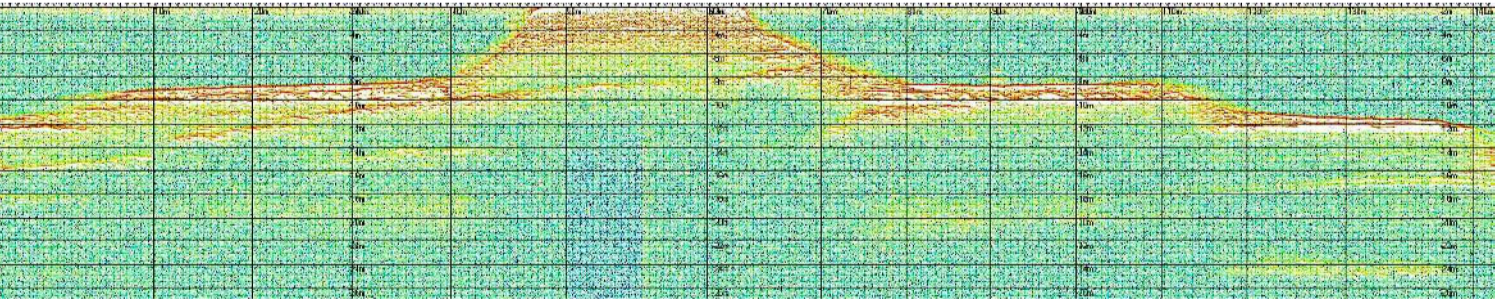
profilo sub-bottom 119



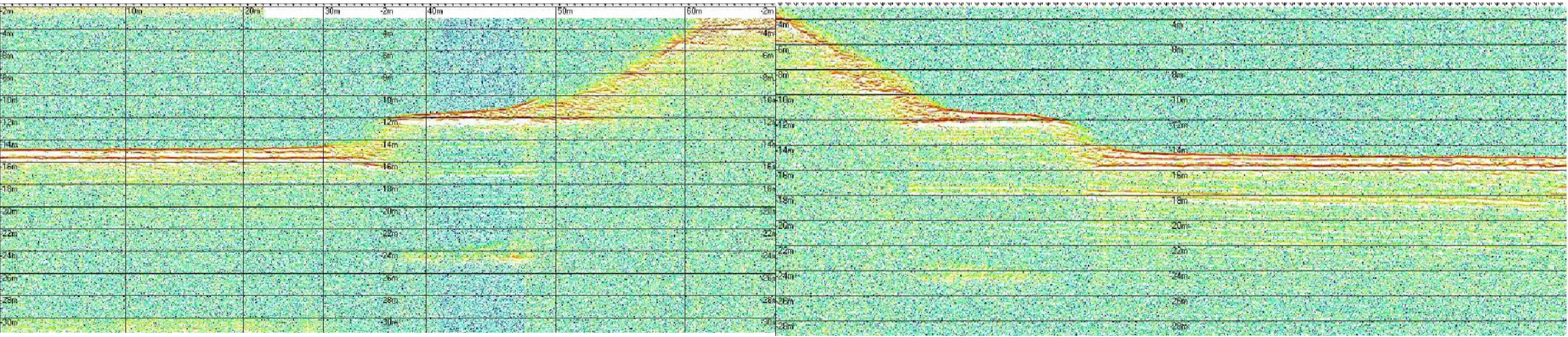
profilo sub-bottom 120



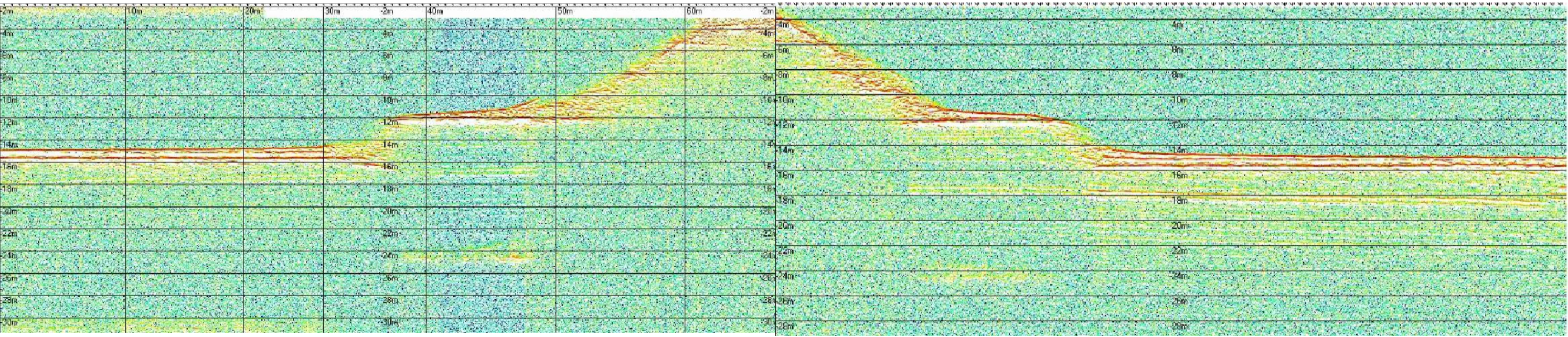
profilo sub-bottom 121



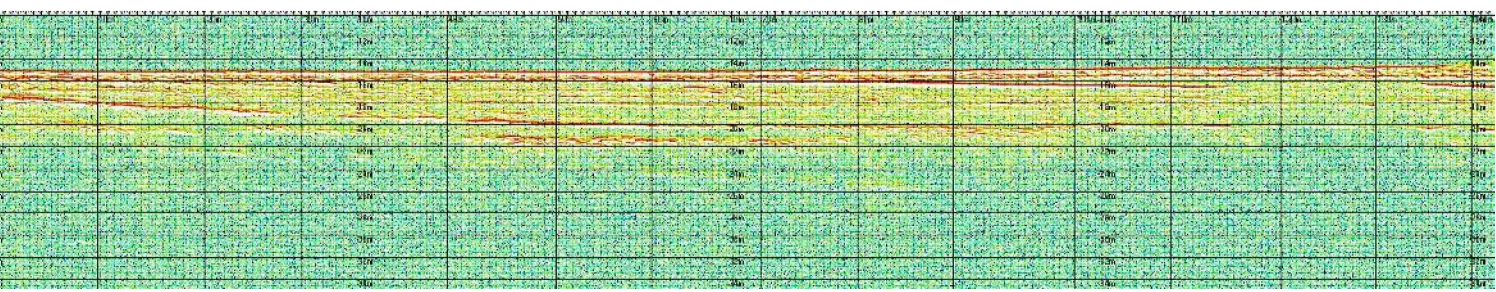
profilo sub-bottom 122



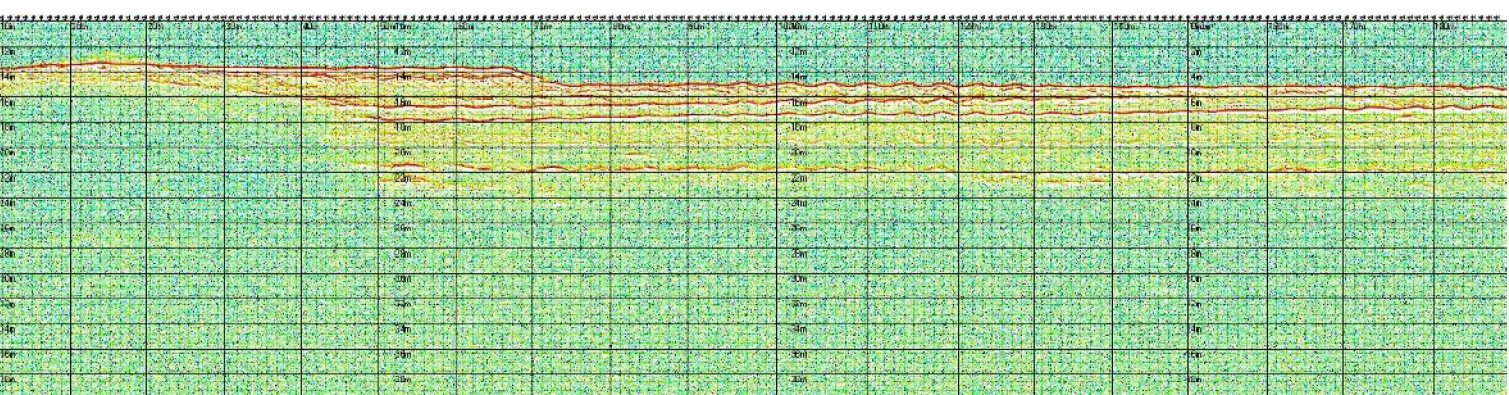
profilo sub-bottom 123



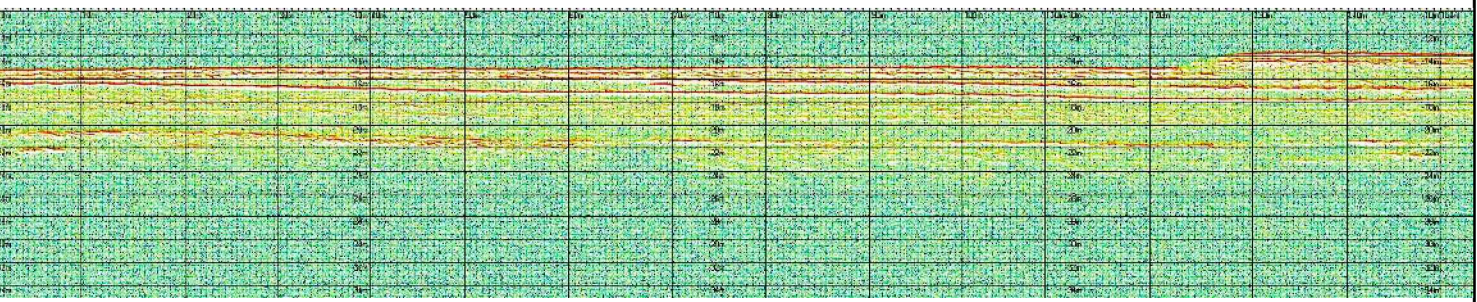
profilo sub-bottom 124



profilo sub-bottom 125



profilo sub-bottom 126



Autorità Portuale di Augusta

LAVORI DEL PRIMO STRALCIO E DEL SECONDO STRALCIO DELLA TERZA FASE DEL PORTO COMMERCIALE DI AUGUSTA - BANCHINE CONTAINERS -

IMPRESE:



(MANDATARIA)

(MANDANTI)

PROGETTO ESECUTIVO DI FUSIONE ED INTEGRAZIONE DEL I E II STRALCIO

3						
2						
1						
0	081114	PRIMA EMISSIONE			P. PERCONTI	F. GIORDANO
REV.	DATA	EMISSIONE	N° ELAB.	REV.	VER.	APPR.
	1073	IG00	T	011	A	
PROGETTO			OPERA		TIPO ELAB.	
1073			IG00		T	
SCALA: VARIE						

TITOLO ELABORATO: INQUADRAMENTO GENERALE STUDI E RELAZIONI SPECIALISTICHE Rilievo Sub Bottom Profiler - profili - tav.6 di 9

PROGETTAZIONE:



SIGMA INGEGNERIA s.r.l. Via della Libertà, 25/A 00187 ROMA (RM) Tel. 06/5129422 - Fax 06/5129420 C.F. e P.IVA 02533160002 email: Sigma@sigmaing.it

RESPONSABILE DEL PROCEDIMENTO: Geom. Venerando Toscano

Signature of Mandante